

Checksheet Grading Exercise

Approx. Length: 8-10min

Created: 1/18/21

Last updated: 1/19/22

Purpose: This exercise gives you a first-person view of the grading process for ME301 homework assignments. It also highlights the importance of carefully reading and following the checksheets.

Instructions:

Pages 3-6 illustrate three examples of homework submissions that you get to grade. The example checksheet and assignment starting point are shown on page 2 for reference.

In groups of 3-4, discuss and grade each of Submissions A, B, and C, using the rubric on page 7.

- For each checksheet item, assign a score of 0 (missing), 1 (complete), or 0.5 (partially complete).
- Assess if any Above and Beyond points are appropriate.
- Subtotal the points.
- Check for point deductions.
- Provide a final total for each submission at the bottom (out of 10).

Assume the first checksheet item is complete for all three.

Discussion Questions (if you have time):

1. Which submission was the best? What makes it better than the others?
2. What letter grade would each submission earn?
3. Which checksheet items affect the grade most?
4. How can you ensure you get a good score on homework assignments?

Example Assignment Checksheet (for reference)

CHECKSHEET FOR TECHNICAL DRAWING WORKSHOP ASSIGNMENT (HW2)
 (Submit this sheet as your assignment coverpage)

NAME: _____ SECTION #: _____

/10

Design Layout Final Products

A completed title block on first page of assignment (sheet 1 of 7)

Use of good drawing practices (straight edge/compass, line weights, scaling, etc.)

Views drawn correctly (line lengths, size and locations of features)

Appropriate placement/alignment between views

Use of centerlines and center marks (where appropriate) in standard views

Use of construction lines (where appropriate) to align views/features

Inclusion of missing dimensions on last page of assignment (sheet 7 of 7)

3 identified, described, and illustrated hand-sketching principles/techniques that you may have struggled with but which added significant value to your finished product in this assignment

Above and Beyond (Exemplary)

Exceptional overall neatness (standard and iso views)

Clean dimensioning scheme on sheet 7 of 7

Other: _____

NOTE: the mentors will use assignment checksheets to grade your work. Be sure to include the checksheet as your assignment cover page at submission. For this assignment, use Adobe Scan (or similar) to convert your work to a pdf. Save your submission as "HW2_Firstname Lastname" and upload your completed assignment to Canvas. Ask questions if you need clarification on any of the tasks.

Point Deductions

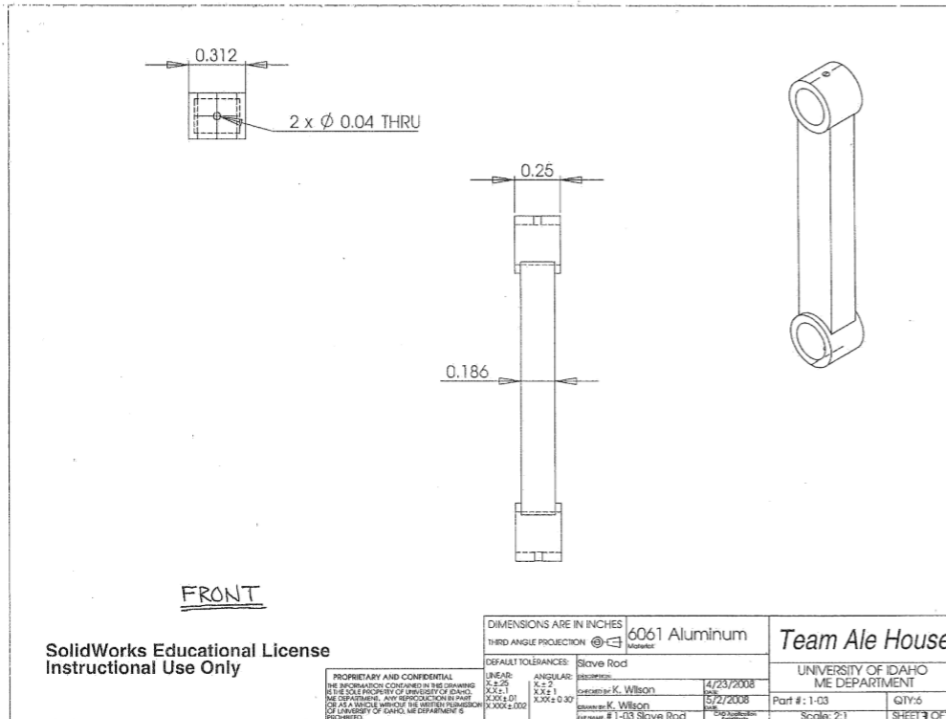
No cover page (-0.5)

Not a pdf (-0.5)

Poor quality scans (-0.5)

Incorrect filename (-0.5)

Assignment Starting Point (for reference)



Submission A

0.312

2 x \varnothing 0.04 THRU

\varnothing 0.375

0.344

FRONT

0.25

0.186

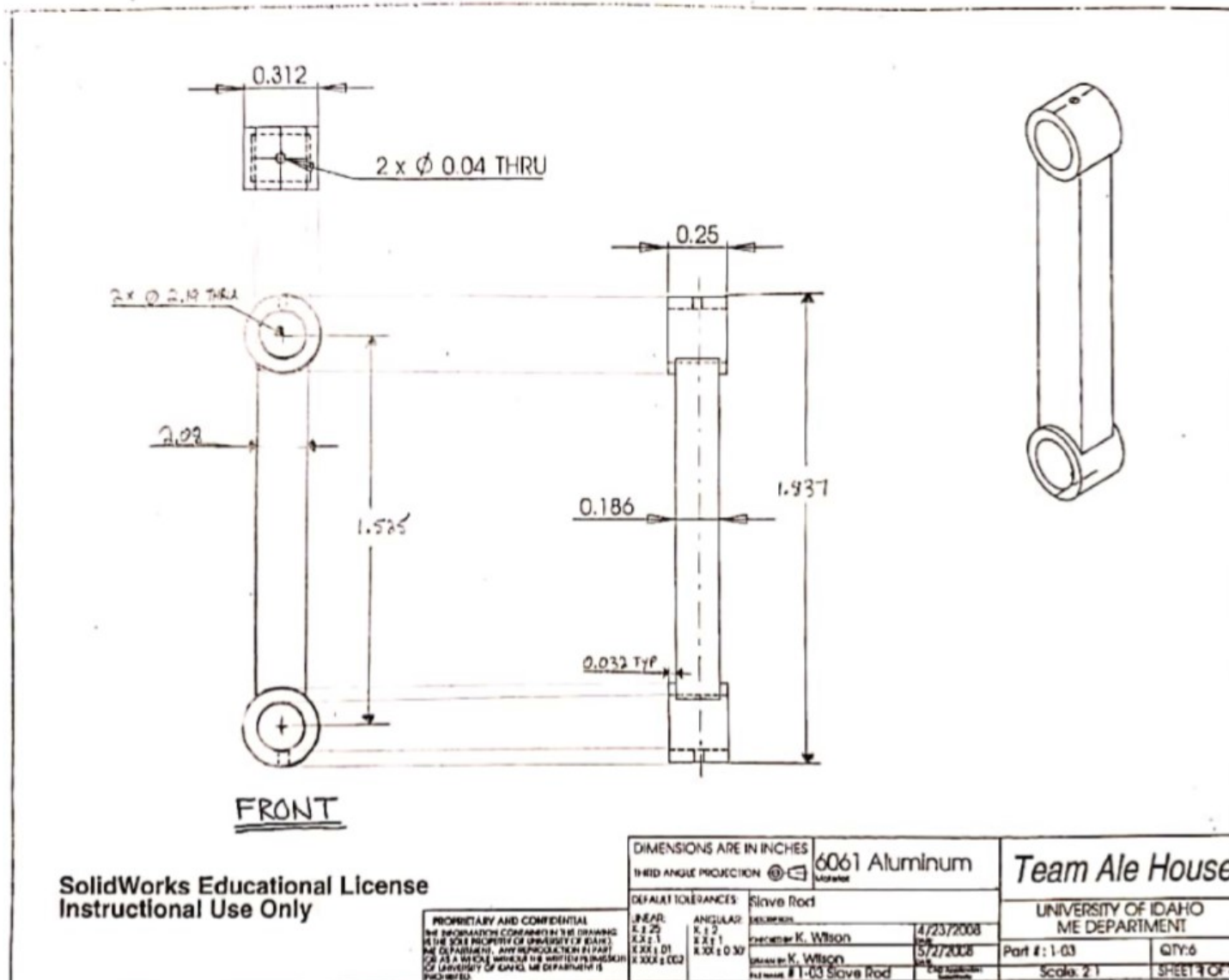
1. MAKING CONSTRUCTION LINES TO TRANSFER MAIN DIMENSIONS OVER HELPS WITH THE INITIAL SHAPE.
2. USE LIGHT LINES AT FIRST
3. DRAW STRAIGHT LINES BEYOND WHAT YOU THINK YOU NEED, BUT LIGHT SO YOU CAN ERASE EXCESS

SolidWorks Educational License
Instructional Use Only

PROPRIETARY AND CONFIDENTIAL
THE INFORMATION CONTAINED IN THIS DRAWING IS THE SOLE PROPERTY OF UNIVERSITY OF IDAHO ME DEPARTMENT. ANY REPRODUCTION IN PART OR AS A WHOLE WITHOUT THE WRITTEN PERMISSION OF UNIVERSITY OF IDAHO, ME DEPARTMENT IS PROHIBITED.

| | | | | | |
|--------------------------|-----------|-------------------------------|-------------|--------------------------------------|----------|
| DIMENSIONS ARE IN INCHES | | 6061 Aluminum | | Team Ale House | |
| THIRD ANGLE PROJECTION | | Material: | | UNIVERSITY OF IDAHO ME DEPARTMENT | |
| DEFAULT TOLERANCES | | Slave Rod | | DATE: 4/23/2008 | |
| LINEAR: | ANGULAR: | DRAWN BY: | CHECKED BY: | DATE: | DATE: |
| X ± .25 | X ± 2 | K. Wilson | K. Wilson | 5/2/2008 | 5/2/2008 |
| XXX ± .1 | XX ± 1 | | | | |
| XXX ± .01 | XX ± 0.30 | | | | |
| XXX ± .002 | | | | | |
| | | PART NUMBER: # 1-03 Slave Rod | | Scale: 2:1 | |
| | | | | QTY: 6 | |
| | | | | SHEET 7 OF 7 | |

Submission B

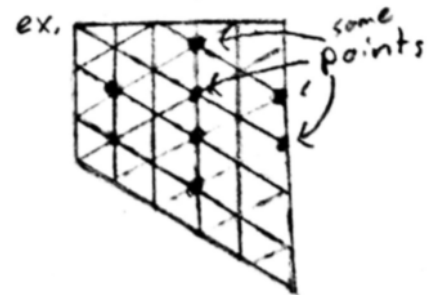


Submission B (cont'd)

Methods that helped sketching

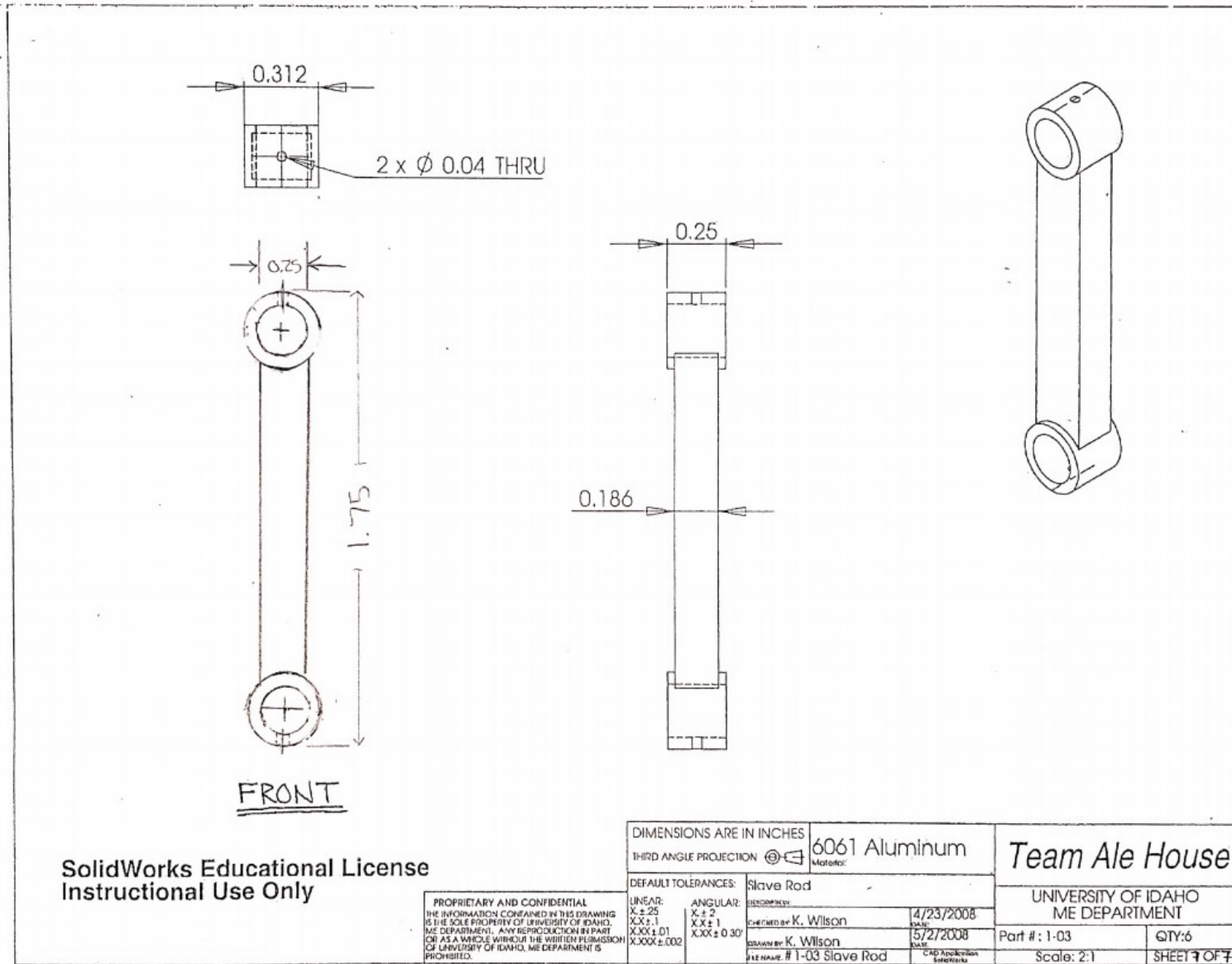
1) When drawing the isometric view, plotting out the corners helped to not run out of graph space halfway through the sketch.

2) When using the compass, support the end with your index finger and push your thumb in the hinge area to get even pressure on the needle and pencil.



3) When gridlines were not available, I placed a piece of graph paper under the page to give some guidelines when possible (some features wouldn't line up)

Submission C



CHECKSHEET FOR HAND SKETCHING WORKSHOP ASSIGNMENT (HW2)

(Submit this sheet as your assignment coverpage)

NAME(s): _____ SECTION #: _____

Design Layout Final Products

A B C

- | | | | |
|-----|-----|-----|--|
| _1_ | _1_ | _1_ | A completed title block on first page of assignment (sheet 1 of 7) |
| ___ | ___ | ___ | Use of good drawing practices (straight edge/compass, line weights, scaling, etc.) |
| ___ | ___ | ___ | Views drawn correctly (line lengths, size and locations of features) |
| ___ | ___ | ___ | Appropriate placement/alignment between views |
| ___ | ___ | ___ | Use of centerlines and center marks (where appropriate) in standard views |
| ___ | ___ | ___ | Use of construction lines (where appropriate) to align views/features |
| ___ | ___ | ___ | Inclusion of missing dimensions on last page of assignment (sheet 7 of 7) |
| ___ | ___ | ___ | 3 identified, described, and illustrated hand-sketching principles/techniques that you may have struggled with but which added significant value to your finished product in this assignment |

Above and Beyond (Exemplary)

- | | | | |
|-----|-----|-----|---|
| ___ | ___ | ___ | Exceptional overall neatness |
| ___ | ___ | ___ | Clean dimensioning scheme on sheet 7 of 7 |
| ___ | ___ | ___ | Other: _____ |



Subtotals

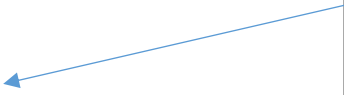
___ ___ ___

Point Deductions

___ ___ ___

Point Deductions

| | | | |
|-----|-----|-----|---------------------------|
| ___ | ___ | ___ | No cover page (-0.5) |
| ___ | ___ | ___ | Not a pdf (-0.5) |
| ___ | ___ | ___ | Poor quality scans (-0.5) |
| ___ | ___ | ___ | Incorrect filename (-0.5) |



Totals

A: ___ / 10 B: ___ / 10 C: ___ / 10