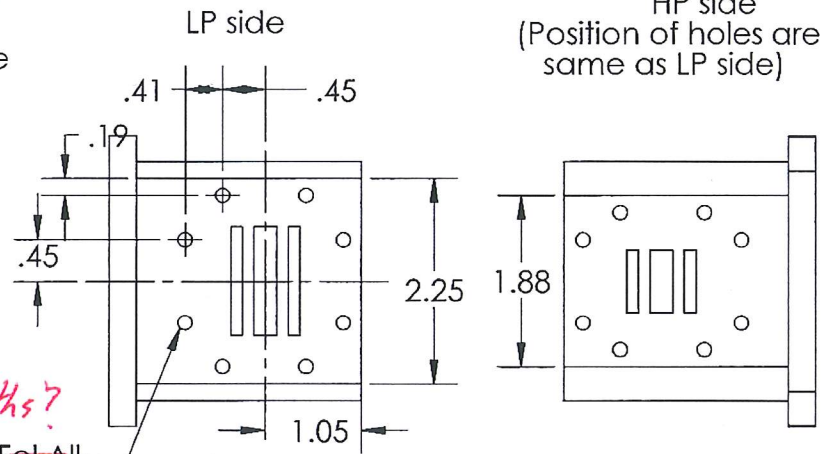


Low Pressure (LP)

High pressure (HP)

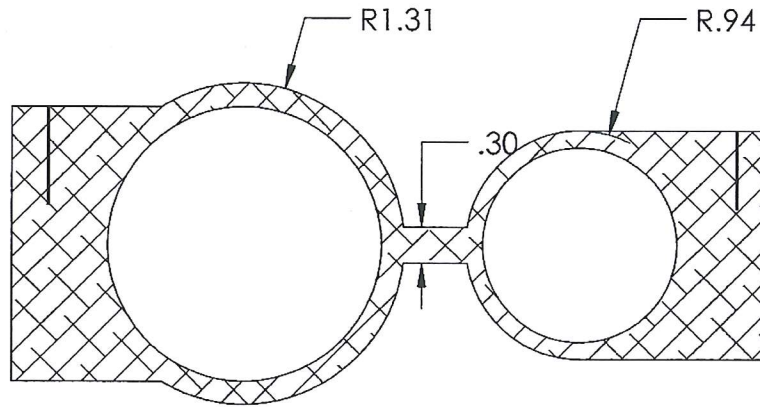
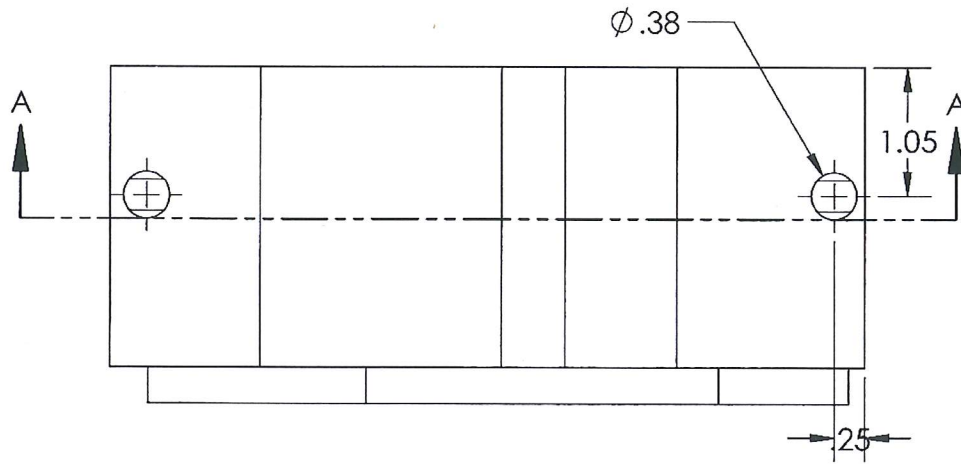
$\phi 0.13$: ~~Cut Extrude~~
0.006' Clearance
between each hole

*call out hole
depths*



$\phi 0.16$: *depths?*
~~Cut Extrude For All~~

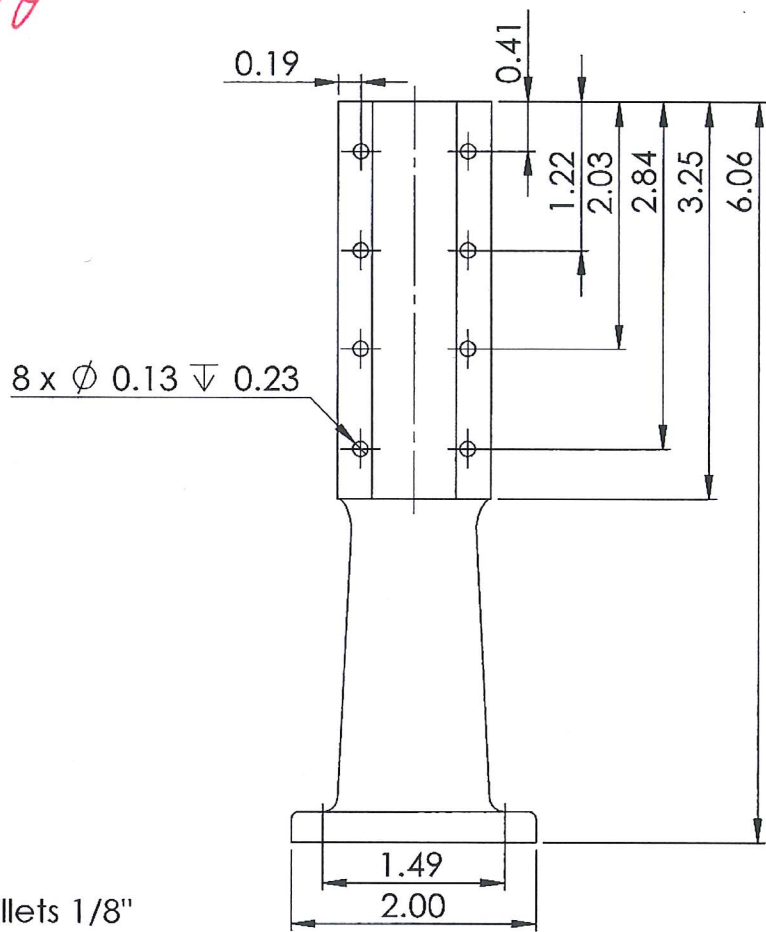
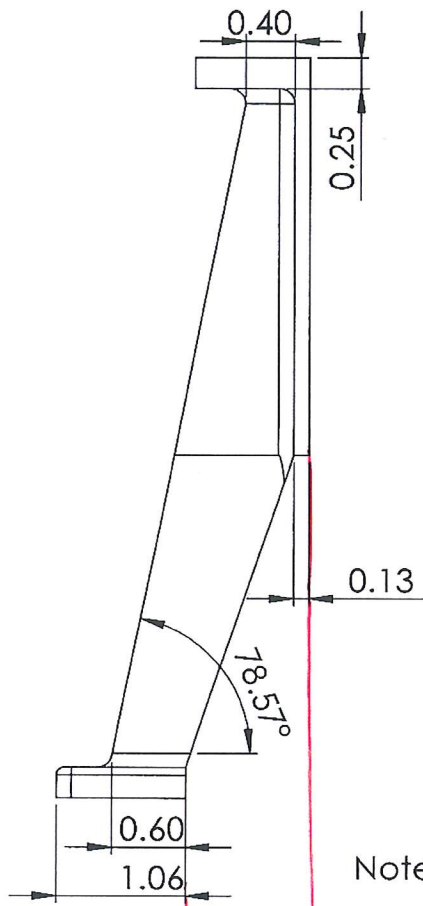
PROPRIETARY AND CONFIDENTIAL THE INFORMATION CONTAINED IN THIS DRAWING IS THE SOLE PROPERTY OF UNIVERSITY OF IDAHO, ME DEPARTMENT. ANY REPRODUCTION IN PART OR AS A WHOLE WITHOUT THE WRITTEN PERMISSION OF UNIVERSITY OF IDAHO, ME DEPARTMENT IS PROHIBITED.		DIMENSIONS ARE IN INCHES THIRD ANGLE PROJECTION		S.W. Condensor Engine	
MATERIAL: 1060 Alloy		DESCRIPTION: HP LP Cylinder Main Body		UNIVERSITY OF IDAHO ME DEPARTMENT	
DEFAULT TOLERANCES: LINEAR: X.±.25 X.X±.1 X.XX±.01 X.XXX±.002		ANGULAR: X.±.2 X.X±.1 X.XX±.0.30°		CHECKED BY: _____ DATE: 04/17/17 DRAWN BY: I DATE: 04/17/17	
FILE NAME: 1-01 HP LP Main Body.SLDPRT		PART #: 01-01 QTY: 01		SCALE: 1:2 SHEET: 1 OF 2	



SECTION A-A
SCALE 1 : 1.5

PROPRIETARY AND CONFIDENTIAL THE INFORMATION CONTAINED IN THIS DRAWING IS THE SOLE PROPERTY OF UNIVERSITY OF IDAHO, ME DEPARTMENT. ANY REPRODUCTION IN PART OR AS A WHOLE WITHOUT THE WRITTEN PERMISSION OF UNIVERSITY OF IDAHO, ME DEPARTMENT IS PROHIBITED.		DIMENSIONS ARE IN INCHES THIRD ANGLE PROJECTION		S.W.Condensor Engine	
MATERIAL: 1060 Alloy		DESCRIPTION: HP LP Cylinder Main Body		UNIVERSITY OF IDAHO ME DEPARTMENT	
DEFAULT TOLERANCES: LINEAR: X.±.25 X.X±.1 X.XX±.01 X.XXX±.002	ANGULAR: X.± 2 X.X± 1 X.XX± 0 30'	CHECKED BY: _____ DRAWN BY: _____ FILE NAME: 1-01 HP LP Main Body.SLDprt	DATE: 04/17/17 DATE: 04/17/17	PART #: 01-01 SCALE: 1:2	QTY: 01 SHEET: 2 OF 2

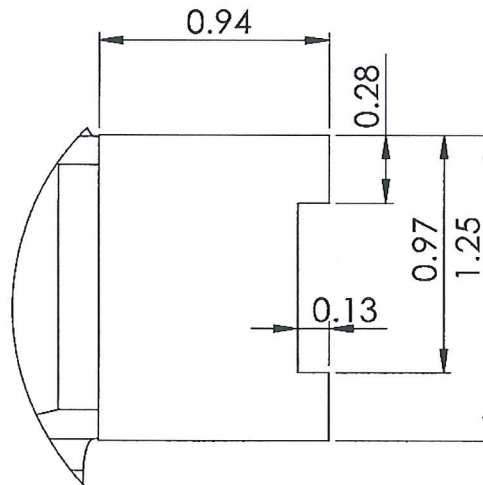
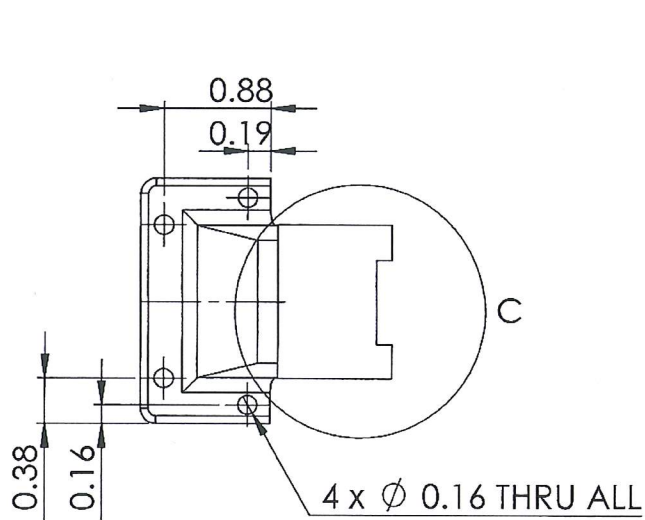
1/8



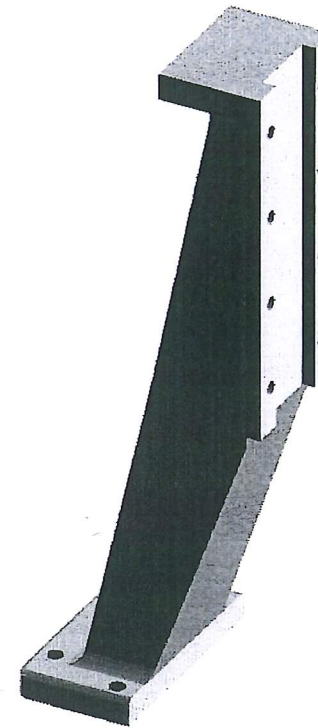
Note: All Fillets 1/8"

It may be worth using a dimension here since this is the important dimension, more so than the angle

PROPRIETARY AND CONFIDENTIAL THE INFORMATION CONTAINED IN THIS DRAWING IS THE SOLE PROPERTY OF UNIVERSITY OF IDAHO, ME DEPARTMENT. ANY REPRODUCTION IN PART OR AS A WHOLE WITHOUT THE WRITTEN PERMISSION OF UNIVERSITY OF IDAHO, ME DEPARTMENT IS PROHIBITED.		DIMENSIONS ARE IN INCHES THIRD ANGLE PROJECTION		S.W. Condensor Engine	
MATERIAL: 1060 Alloy		DESCRIPTION: Rear Support Leg		UNIVERSITY OF IDAHO ME DEPARTMENT	
DEFAULT TOLERANCES: LINEAR: X ± .25 X.X ± .1 X.XX ± .01 X.XXX ± .002		ANGULAR: X ± 2 X.X ± 1 X.XX ± 0.30		CHECKED BY: _____ DATE: 4/17/2017	PART #: 04-04 QTY: 1
DRAWN BY: _____ FILE NAME: 04-04 Rear Support Leg.SLDprt		DATE: 4/17/2017		SCALE: 2:3 SHEET: 1 OF 2	

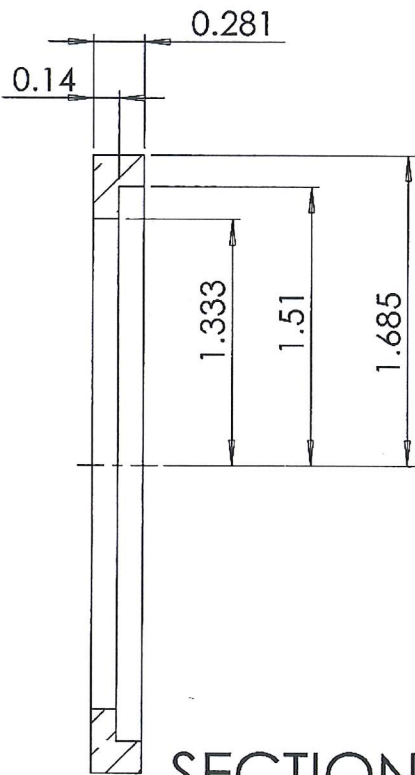


DETAIL C
SCALE 4 : 3

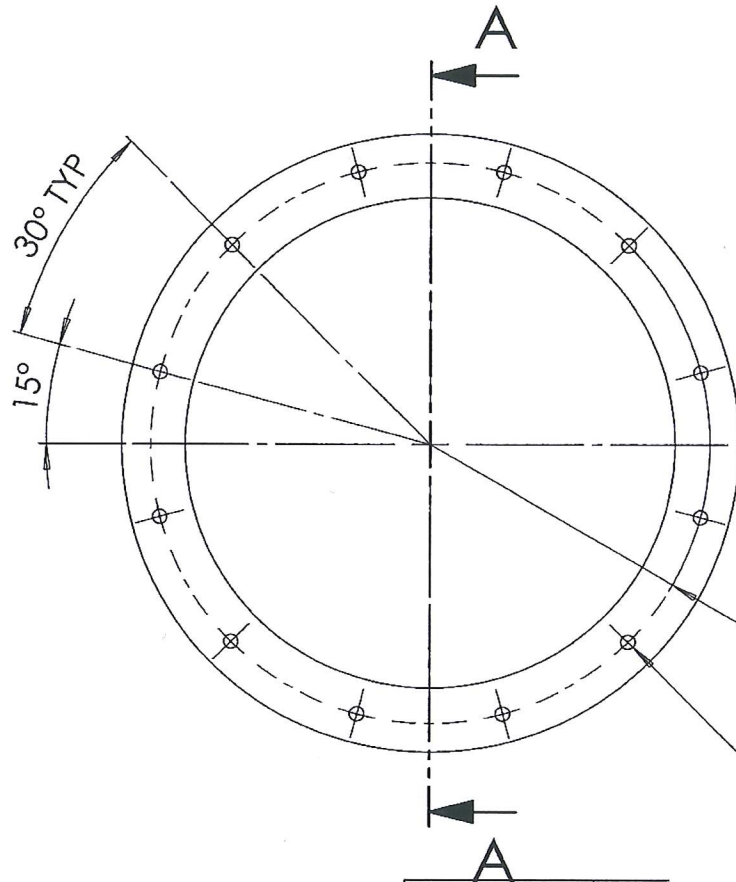


PROPRIETARY AND CONFIDENTIAL THE INFORMATION CONTAINED IN THIS DRAWING IS THE SOLE PROPERTY OF UNIVERSITY OF IDAHO, ME DEPARTMENT. ANY REPRODUCTION IN PART OR AS A WHOLE WITHOUT THE WRITTEN PERMISSION OF UNIVERSITY OF IDAHO, ME DEPARTMENT IS PROHIBITED.		DIMENSIONS ARE IN INCHES THIRD ANGLE PROJECTION		S.W. Condensor Engine	
DEFAULT TOLERANCES: LINEAR: X ± .25 X.X ± .1 X.XX ± .01 X.XXX ± .002		MATERIAL: 1060 Alloy			
ANGLAR: X ± 2 X.X ± 1 X.XX ± 0.30		DESCRIPTION: Rear Support Leg		DATE: 4/17/2017	
CHECKED BY: _____		DATE: 4/17/2017		PART #: 04-04	
DRAWN BY: _____		DATE: 4/17/2017		QTY: 1	
FILE NAME: 04-04 Rear Support Leg.SLDPRT		SCALE: 2:3		SHEET: 2 OF 2	

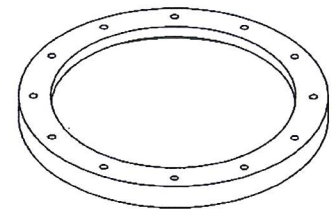
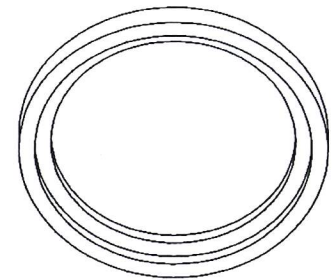
Amval 6/8



SECTION A-A



VIEW B
SCALE 1:2



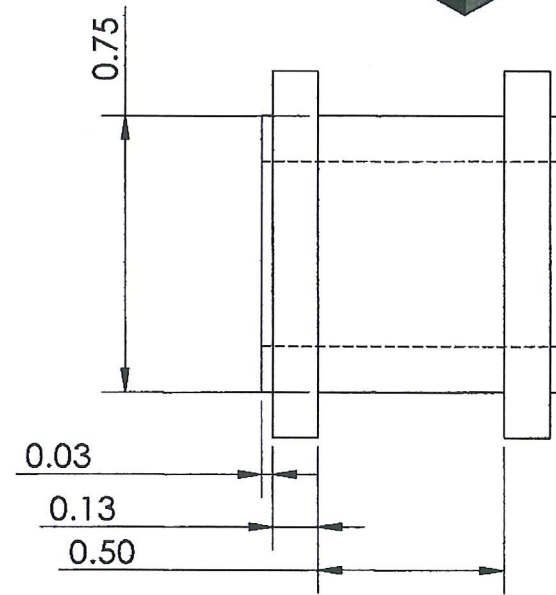
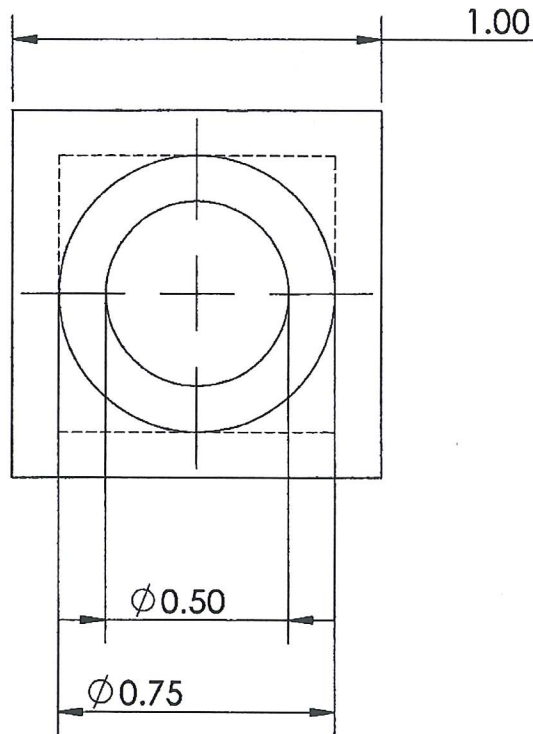
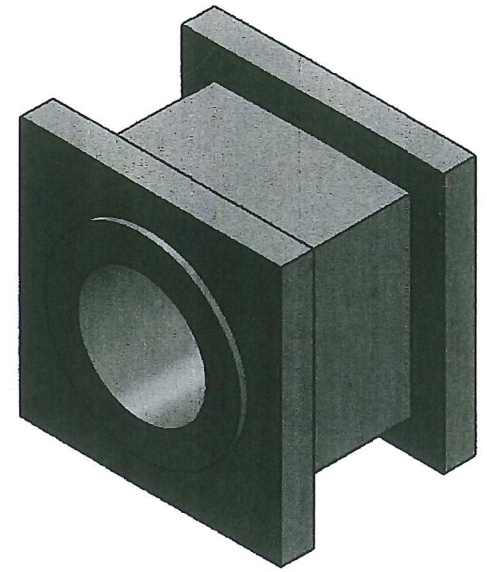
B

R1.526
BOLT CIRCLE

12 x ϕ 0.08 ∇ 0.13
3-48 UNC ∇ 0.20

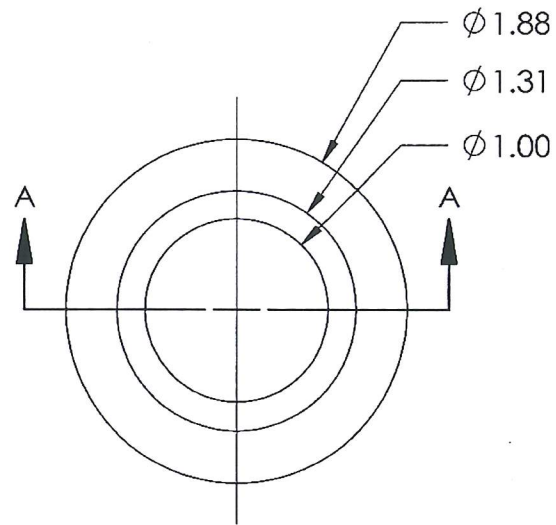
DRAWN BY: _____ DATE: 4/17/2017 CHECKED BY: _____ DATE: 4/17/2017 PART #: 07-02 QTY: 2		PROPRIETARY AND CONFIDENTIAL THE INFORMATION CONTAINED IN THIS DRAWING IS THE SOLE PROPERTY OF UNIVERSITY OF IDAHO, ME DEPARTMENT. ANY REPRODUCTION IN PART OR AS A WHOLE WITHOUT THE WRITTEN PERMISSION OF UNIVERSITY OF IDAHO, ME DEPARTMENT IS PROHIBITED.
SCALE: 1:1 SHEET: 1 OF 1		
DEFAULT TOLERANCES: LINEAR: X \pm .25 X.X \pm .1 X.XX \pm .01 X.XXX \pm .002 ANGULAR: X \pm 2 X.X \pm 1 X.XX \pm 0.30'		UNIVERSITY OF IDAHO ME DEPARTMENT DIMENSIONS ARE IN INCHES THIRD ANGLE PROJECTION
DESCRIPTION: Cap Mounting Ring MATERIAL: Brass FILE NAME: 7-02 Condensor Ring.SLDPR1		

A bit trivial 5/8

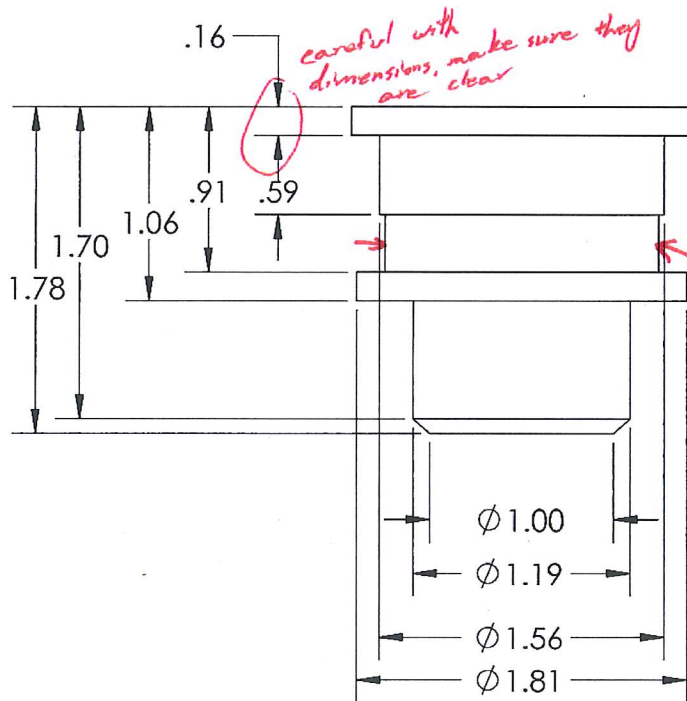
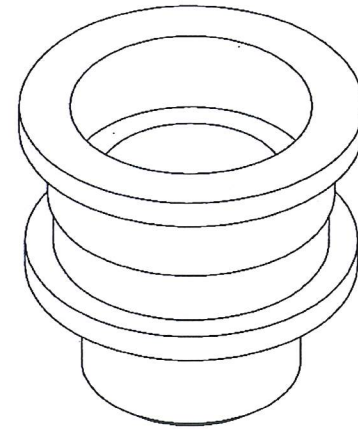


SOLIDWORKS Educational Product. For Instructional Use Only.

		DIMENSIONS ARE IN INCHES THIRD ANGLE PROJECTION 		Bushing for Crankshaft	
		MATERIAL: Brass			
DEFAULT TOLERANCES:		DESCRIPTION: Bushing for Crankshaft		ME301 - Under Pressure	
LINEAR:	ANGULAR:	CHECKED BY:	DATE: 4/17/2017	PART #: 01-03	QTY: 4
X ± .25	X ± 2	DRAWN BY: ..	DATE: 4/6/2017	SCALE: 2:1	SHEET: 1 OF 1
X.X ± .1	X.X ± 1	FILE NAME: 01-03 bushing for crankshaft_frej.SLDPR			
X.XX ± .01	X.XX ± 0.30				
X.XXX ± .002					

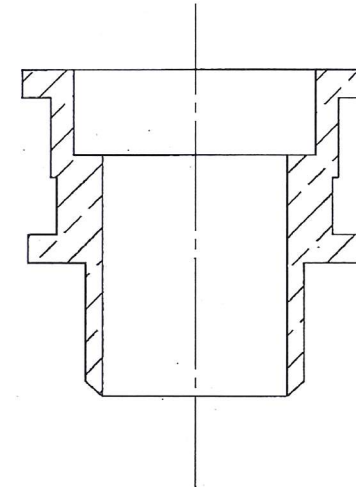


4/8



incomplete?

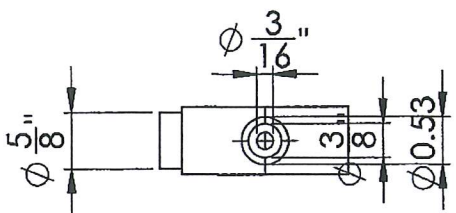
Diameter?



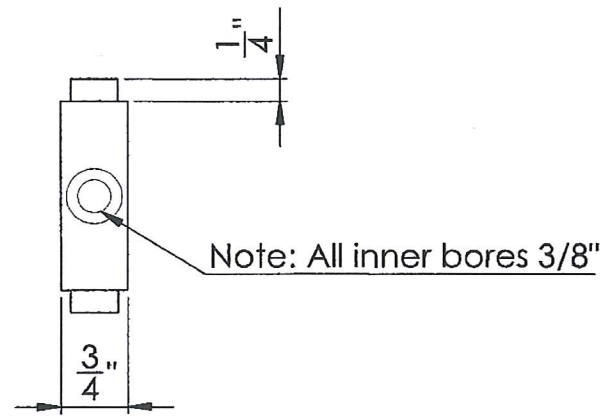
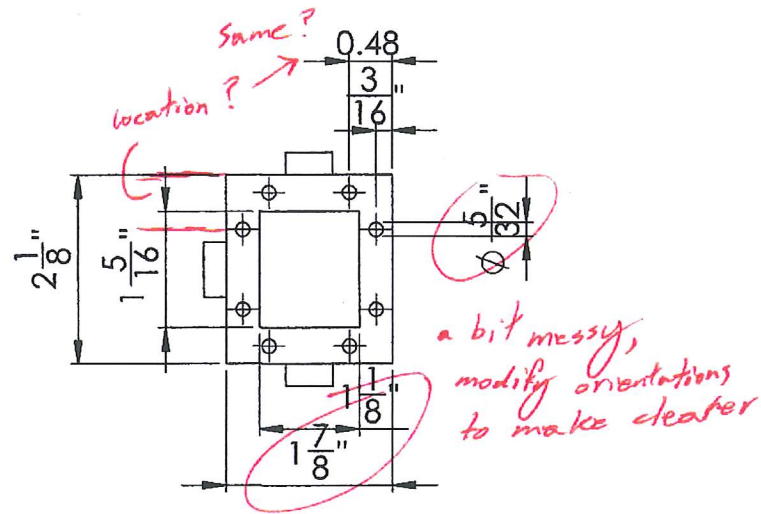
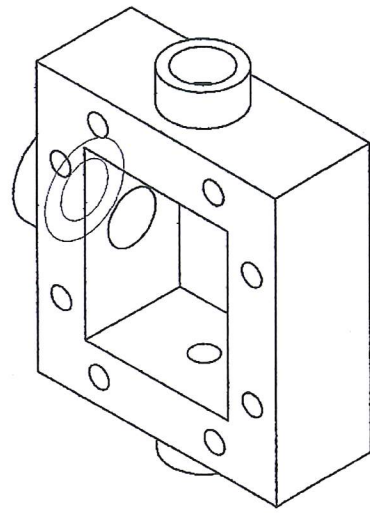
SECTION A-A

		DIMENSIONS ARE IN INCHES THIRD ANGLE PROJECTION		Compound Steam Engine	
		MATERIAL: BRASS		ME301 - Under Pressure	
DEFAULT TOLERANCES:		DESCRIPTION: Pump Barrel		DATE: 4/17/2017	
LINEAR:	ANGULAR:	CHECKED BY:		DATE: 4/17/2017	PART #: 03-03
X.±.25	X.± 2	DRAWN BY:			QTY: 1
X.X±.1	X.X± 1				SCALE: 1:1
X.XX±.01	X.XX± 0.30	FILE NAME: Pump Barrel.SLDPRT			SHEET: 1 OF 1
X.XXX±.002					

5/8



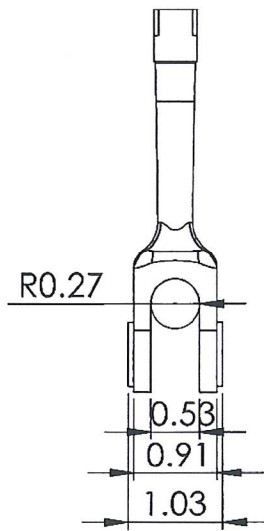
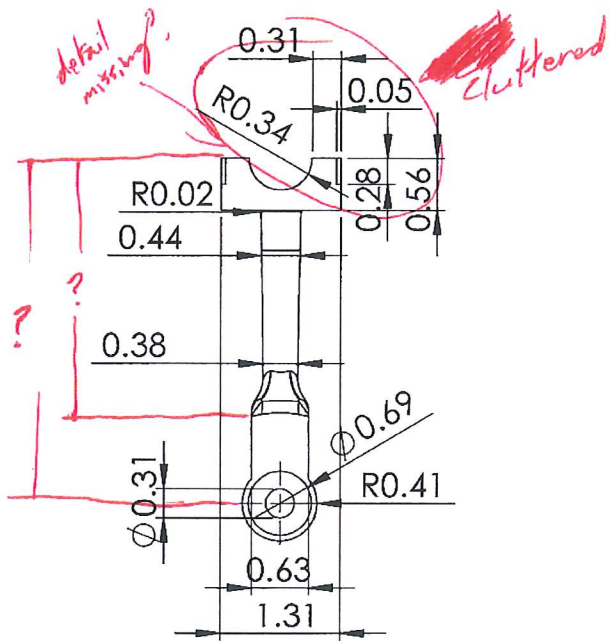
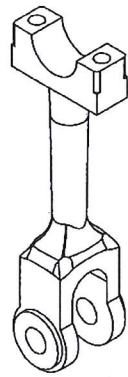
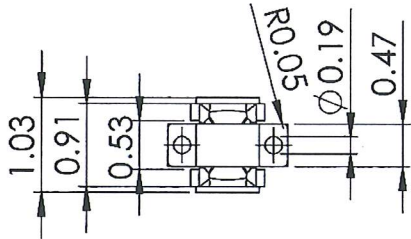
Note: All hole extrusions 1/4"



DIMENSIONS ARE IN INCHES THIRD ANGLE PROJECTION		ME 301 Final Project	
MATERIAL: AISI 1020 Steel		ME301 - Under Pressure	
DEFAULT TOLERANCES:	DESCRIPTION: The high pressure piston steambox	PART #: 06-03	QTY: 1
LINEAR: X. ± .25 X.X ± .1 X.XX ± .01 X.XXX ± .002	ANGULAR: X. ± 2 X.X ± 1 X.XX ± 0.30'	DATE: 4/17/2017	DATE: 4/17/2017
CHECKED BY:	DRAWN BY:	FILE NAME: 06-03 High Pressure Piston Steambox.SLD	DATE: 1:1
			SHEET: 1 OF 1

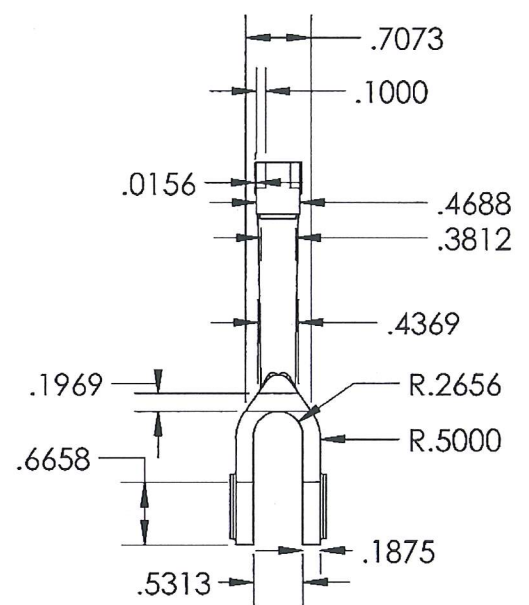
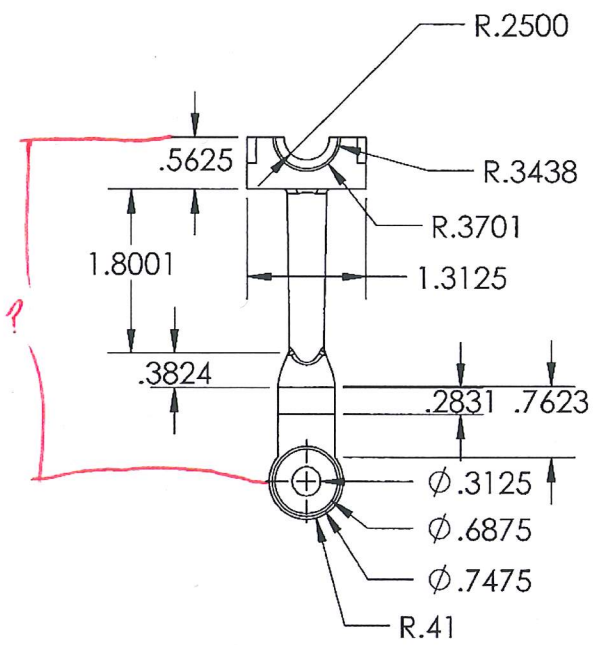
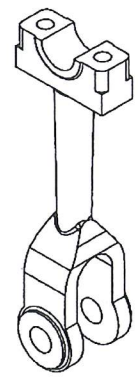
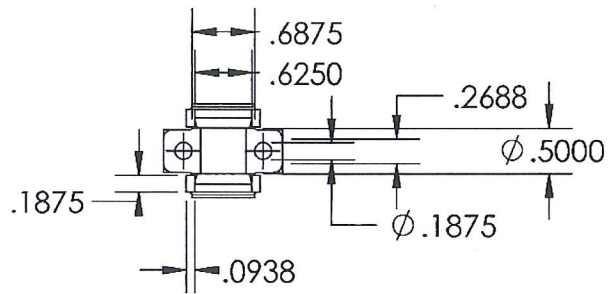
X No

5/8



		DIMENSIONS ARE IN INCHES THIRD ANGLE PROJECTION		Compund Steam Engine	
		MATERIAL: 1024 Steel			
DEFAULT TOLERANCES:		DESCRIPTION: Connecting Rod		ME301 - Under Pressure	
LINEAR:	ANGULAR:	CHECKED BY:	DATE: 4/18/2017	PART #: 05-08	QTY: 1
X.±.25	X.± 2				
XX±.1	XX± 1	DRAWN BY:	DATE: 4/18/2017		
X.XX±.01	X.XX± 0.30				
X.XXX±.002		FILE NAME: 05-08 Connecting Rod.SLDPRT		SCALE: 1:2	SHEET: 1 OF 1

1/8



DRAWN BY:		DATE: 4/17/2017	PROPRIETARY AND CONFIDENTIAL THE INFORMATION CONTAINED IN THIS DRAWING IS THE SOLE PROPERTY OF UNIVERSITY OF IDAHO, ME DEPARTMENT. ANY REPRODUCTION IN PART OR AS A WHOLE WITHOUT THE WRITTEN PERMISSION OF UNIVERSITY OF IDAHO, ME DEPARTMENT IS PROHIBITED.
CHECKED BY:		DATE: 4/17/17	
PART #: 03-01		QTY: 1	
SCALE: 1:2		SHEET: 1 OF 1	UNIVERSITY OF IDAHO ME DEPARTMENT DIMENSIONS ARE IN INCHES
DEFAULT TOLERANCES: LINEAR: X.±.25 X.X±.1 X.XX±.01 X.XXX±.002	ANGULAR: X.± 2 X.X± 1 X.XX± 0.30'	DESCRIPTION: Piston Connecting Rod MATERIAL: Gray Cast Iron FILE NAME: 03-01 Connecting Rod Bottom.SLDPRT	