

DAVID CHIPPERFIELD



<http://www.davidchipperfield.co.uk/>

DAVID CHIPPERFIELD

BACKGROUND

- 1953 BORN IN LONDON, UK
- 1978 DIPLOMA IN ARCHITECTURE, ARCHITECTUAL ASSOCIATION, UK
- 1978-84 WORKED FOR DOUGLAS STEPHEN, RICHARD ROGERS, AND NORMAN FOSTER
- 1985 ESTABLISHED DAVID CHIPPERFIELD ARCHITECTS
FOUNDER MEMBER OF 9H GALLERY, LONDON, UK
- 1992-97 TRUSTEE OF THE ARCHITECTURE FOUNDATION, LONDON, UK

TEACHING

TAUGHT AS A VISITING PROFESSOR AT:

HARVARD UNIVERSITY, CAMBRIDGE, MASS. USA
ECOLE POLYTECHNIQUE, LAUSANNE, SWITZERLAND
LONDON INSTITUTE, UK

TAUGHT AS A PROFESSOR AT:

STAATLICHE AKADEMIE DER BILDENDEN KUNSTE, SUTTGART GERMANY
MIES VAN DER ROHE CHAIR, BARCELONA SCHOOL OF ARCHITECTURE, SPAIN

AWARDS AND PRIZES

81' SCHINKEL PRIZE, SPECIAL MENTION - 90' BRITISH DESIGN AND ART DIRECTION AWARD; ANDREA PALLADIO AWARD FOR THE TOYOTA AUTO KYOTO BUILDING, KYOTO, JAPAN; BRITISH DESIGN AND ART DIRECTION AWARD; FINANCIAL PANTONE COLOUR AWARD - 98' AIA AWARD(UK) FOR KAISTRABE STUDIOS, DUSSELDORF, GERMANY; RIBA REGIONAL AWARD FOR THE RIVER AND ROWING MUSEUM, HENLEY-ON-THAMES, UK ETC...



DAVID CHIPPERFIELD

DESIGN PHILOSOPHY

THE WORK OF DAVID CHIPPERFIELD ARCHITECTS IS BASED UPON A SOLID FOUNDATION OF DESIGN EXCELLENCE, BUDGET AND PROGRAMME CONTROL, PROFICIENT PROJECT MANAGEMENT AND THE ACHIEVEMENT OF BEST VALUE AND ARCHITECTURAL QUALITY. WORKING DIRECTLY WITH ARCHITECTURAL TEAMS, DAVID CHIPPERFIELD IS ACTIVELY INVOLVED IN THE DESIGN AND SUPERVISION OF EACH PROJECT FROM THE INITIAL CONCEPT STAGE, THROUGH PLANNING, CONSTRUCTION AND COMPLETION.

THE PRACTICE IS DRIVEN BY A CONSISTENT PHILOSOPHICAL APPROACH, NOT A PREDETERMINED HOUSE STYLE. AS A RESULT IT AIMS TO CREATE SPECIFICALLY DETAILED BUILDINGS THAT ARE INTIMATELY CONNECTED TO CONTEXT AND FUNCTION. WE BELIEVE THAT HIGH QUALITY DESIGN RESULTS FROM THE CONTINUITY OF THE DESIGN PROCESS AND INTENSIVE DIALOGUE WITH THE CLIENT, CONSULTANTS, CONTRACTORS AND END USERS. WE WORK CLOSELY TOGETHER TO ENSURE THE BEST RESULTS ARE ACHIEVED THROUGH A SYNTHESIS OF CONCEPT, BEAUTY AND FUNCTIONAL INTEGRATION.

BASED IN LONDON AND BERLIN, THE PRACTICE IS MULTILINGUAL AND MULTICULTURAL, YOUTH IS BALANCED WITH EXPERIENCE. THE PRACTICE EMPLOYS OVER 100 STAFF FROM 16 COUNTRIES, SPEAKING OVER 22 DIFFERENT LANGUAGES, THEY ARE THE PRACTICE'S GREATEST RESOURCE AND THEIR DIVERSITY IS CRUCIAL TO THE ONGOING BROADENING OF DESIGN VISION FROM WITHIN.

THE WORK OF THE PRACTICE HAS BEEN PUBLISHED EXTENSIVELY, INCLUDING SEVERAL BOOKS AND NUMEROUS ARTICLES IN JOURNALS AND NEWSPAPERS. THE PRACTICE'S WORK HAS ALSO BEEN REGULARLY EXHIBITED INTERNATIONALLY.



DAVID CHIPPERFIELD

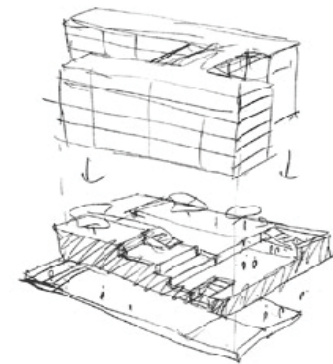
IMPORTANT WORKSNOT THAT ALL OF HIS WORKS AREN'T IMPORTANT

RIVER AND ROWING MUSEUM, HENLEY-ON-THAMES (1989-97)

INSPIRED BY LOCAL RIVER BOATHOUSE AND THE TRADITIONAL WOODEN BARNES OF OXFORDSHIRE- A SIMPLE AND CLEAR ARCHITECTURAL IDEA THAT COULD EASILY BE UNDERSTOOD IN CONTEXT WITH ITS IMMEDIATE NEIGHBORS. IT IS A CAREFULLY CRAFTED MANIFESTATION OF LONG, PARALLEL, OAK-GLAD FORMS AND LEAD-COATED ROOFS. HOUSES A SIGNIFICANT COLLECTION OF ROWING BOATS, CATALOGUEING THE HISTORY OF THE SPORT, THE RIVER AND THE TOWN OF HENLEY. GLAD IN UNTREATED GREEN OAK TIMBER - A WOOD THAT HARDENS AND EFFECTIVELY WEATHERS WITH AGE SO AS TO FURTHER ALIGN THE BUILDING WITH A LOCAL VERNACULAR.

BBC SCOTLAND, GLASGOW (2001-05)

LOCATED ALONGSIDE THE ABANDONED GOVAN DOCKS ON AN EXPOSED PLOT OF LAND DOMINATED BY THE EXPANSE OF THE RIVER CLYDE AND THE MOUNTAINS OF THE SCOTTISH HIGHLANDS TO THE NORTH. FACED WITH THIS OPEN LANDSCAPE, THE DESIGN OF THE BUILDING HAD TO FIND WAYS TO ESTABLISH ITS OWN SENSE OF PLACE AND SATISFY THE DEMANDS OF THE BBC FOR A CONTAINED YET PUBLICLY ACCESSIBLE BUILDING. THE RESPONSE THROUGH OUT ALL OF THE DESIGN DECISIONS WAS TO INTEGRATE EACH OF THE BUILDING'S ELEMENTS, AVOIDING A BACK-OF-HOUSE ATMOSPHERE FOR TECHNICAL AREAS, AND THE COMPARTMENTALIZATION OF COMMON SPACES, SO THAT THE BUILDING CAN ABSORB AND REVEAL THE DIVERSITY OF ITS USES.



DAVID CHIPPERFIELD

OTHER WORKS OF NOTE

AMERICAN WORKS

FIGGE ARTS CENTER, DAVENPORT IOWA

BRYANT PARK HOTEL, NEW YORK, NY



PRODUCT DESIGN

AIRFRAME FURNITURE

SOFAS, TABLES DESKS ETC.



URBAN PLANNING

DAVID CHIPPERFIELD ARCHITECTS IS AN

INTERNATIONAL PRACTICE WHICH HAS

WORKED ON URBAN SCHEMES, LARGE

AND SMALL, IN GERMANY, ITALY JAPAN, SPAIN AND THE USA AS WELL AS THE

UK. AMONG THEIR MOST PRESTIGIOUS PROJECTS ARE THE NEUES MUSEUM ON

BERLIN'S MUSEUMSINSEL, AND THE REGIONAL HEADQUARTERS FOR THE BUNDES-

BANK IN FORMER EAST GERMANY. THEY WON COMPETITIONS FOR THE EXTENSION TO

VENICE'S SAN MICHELE CEMETERY AND THE PALACE OF JUSTICE IN SALERNO, AND

HAVE BEEN APPOINTED AS ARCHITECTS FOR THE DAVENPORT MUSEUM OF ART IN

IOWA.



DAVID CHIPPERFIELD

REFERENCES

CHIPPERFIELD, DAVID. DAVID CHIPPERFIELD ARCHITECTURAL WORKS 1990-2002. NEW YORK, NEW YORK: PRINCETON ARCHITECTURAL PRESS, 2003.

CHIPPERFIELD, DAVID. "DAVID CHIPPERFIELD ARCHITECTS". <[HTTP://WWW.DAVIDCHIPPERFIELD.CO.UK/](http://www.davidchipperfield.co.uk/)>.

"IN BRITAIN, MONEY AND MARKETING ARE WHAT MATTER MOST". GUARDIAN UNLIMITED. <[HTTP://ARTS.GUARDIAN.CO.UK/CRITIC/FEATURE/0,,1647463,00.HTML](http://arts.guardian.co.uk/critic/feature/0,,1647463,00.html)>.

"REVITALIZING THE EUROPEAN CITY". SEELE. <[HTTP://WWW.ARPLUS.COM/CONFERENCES/ARCONFERENCE/INTROTOCONFERENCE.HTM](http://www.arplus.com/conferences/arconference/introtocconference.htm)>.



DAVID CHIPPERFIELD

GETTING TO DAVID CHIPPERFIELD LONDON OFFICE



DAVID
CHIPPERFIELD
ARCHITECTS

Cobham Mews
Agar Grove
Camden
London NW1 9SB
United Kingdom

T +44 (0)20 726 79422

F +44 (0)20 7267 9347

E info@davidchipperfield.co

Print Map

Tube
Camden Town (Northern Line)

Overline
Camden Road (Silverlink)

DAVID CHIPPERFIELD

WALKING DIRECTIONS





Journey Planner

Stage: [1](#) [2](#) [3](#)

3. Route details

Journey summary	edit search options	new journey	return journey	onward journey
Departing: Thursday 20 April 2006 at 19:25. From: W1W 5PN To: NW1 9SB Restrictions:				

Route 3

Time	Details	Maps	Information
19:30 	start W1W 5PN Walk to Warren Street Stn Hampstead Rd	start map end map	Av journey time: 9 mins
19:39 	Warren Street Stn Hampstead Rd Stop: S Take the Bus 29 towards Wood Green Station  Pay before you board	start map end map	Buses every: 4 - 5 mins Max journey time: 15 mins
19:59 	Rochester Road Walk to NW1 9SB end NW1 9SB	start map end map	Av journey time: 5 mins
Maximum journey time: 00:29 Interchanges: 0			