




Environmental Quality
& Citizens'
Perception
of Science

Are we the frog in the pot?

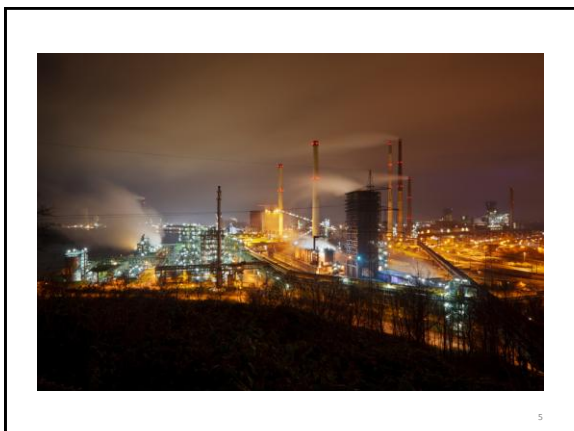


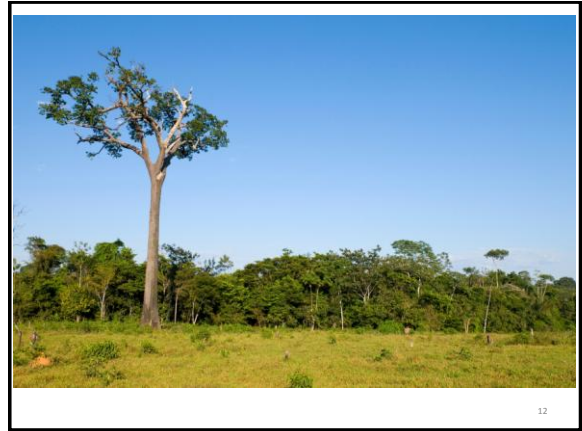
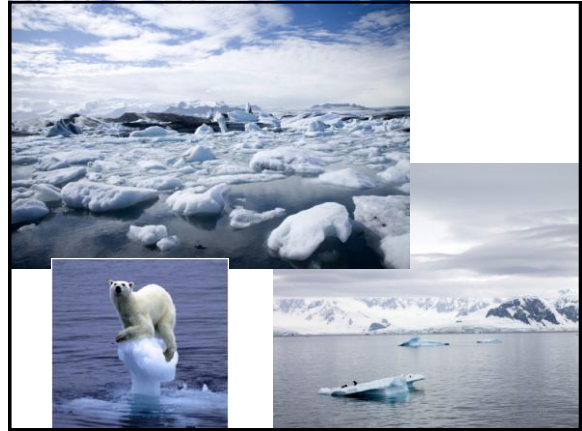
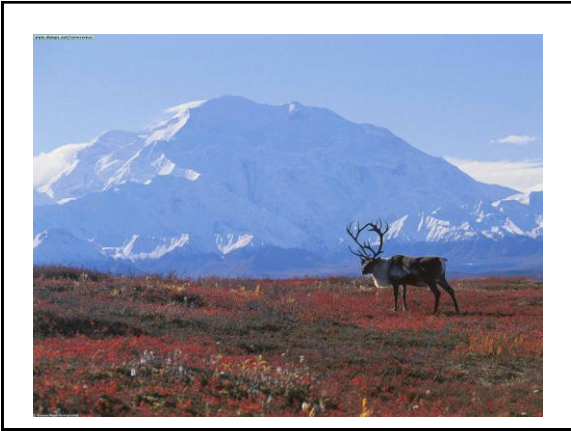
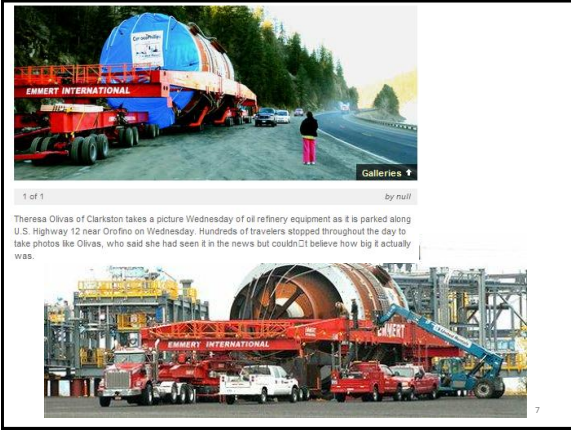
Fact or
Myth?

2

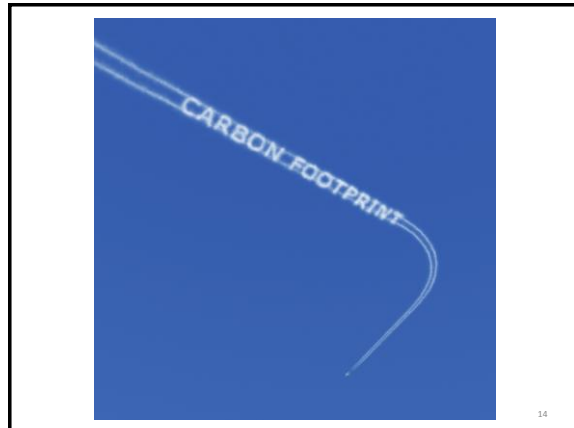
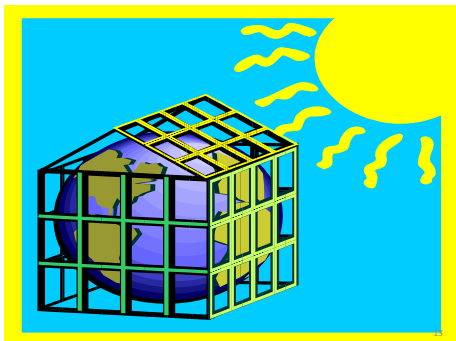
Is the Problem too Large to
Comprehend?

3





Too Complicated?



14

Too Massive?

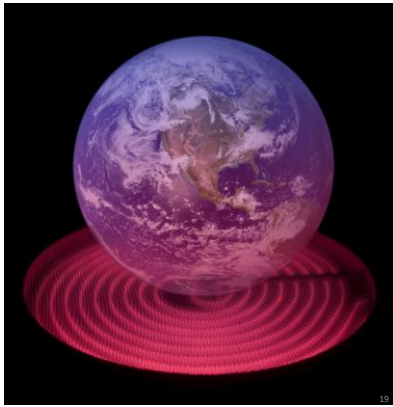


Too Politicized?

What happens when "facts" and "values" clash?

18

Is it in our hands to destroy or save the world?

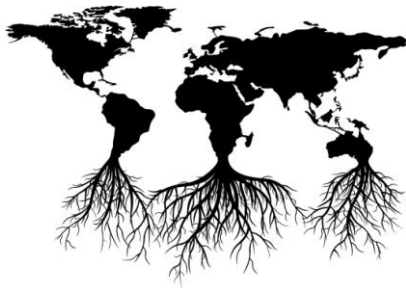


19

Or is it in God's hands and she will ultimately take care of us?



20



Or are we just part of a cosmic cycle in which humankind is no more than the mold on the skin of a peach that spreads then rots away?

21



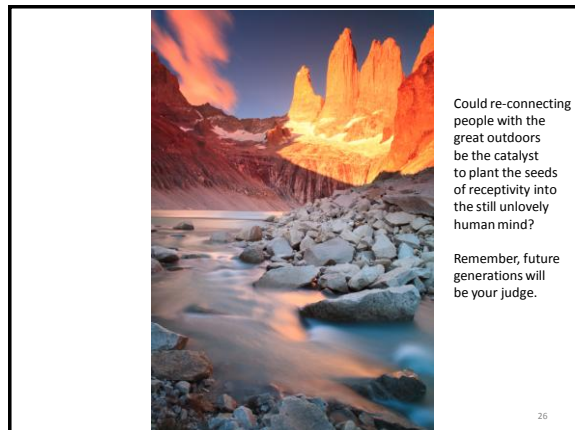
Too Common?



23

OR HAVE WE JUST LOST SIGHT OF WHAT'S AT STAKE?

24



Could re-connecting people with the great outdoors be the catalyst to plant the seeds of receptivity into the still unlovely human mind?

Remember, future generations will be your judge.