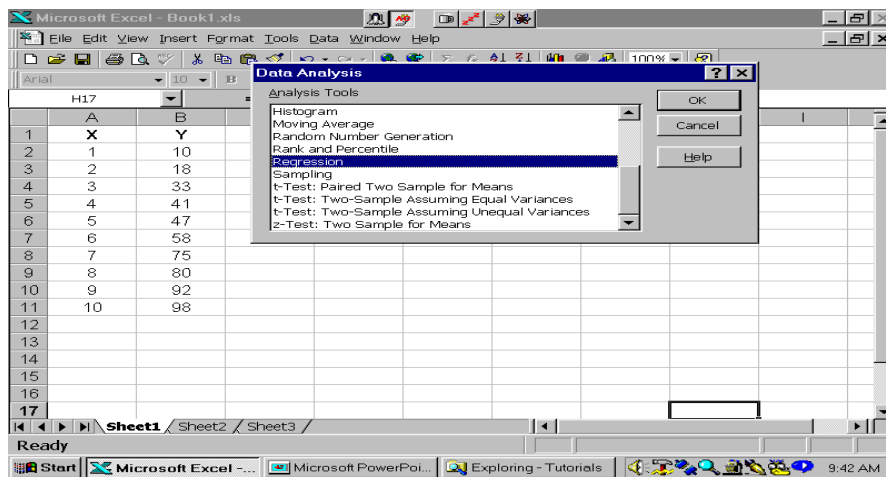


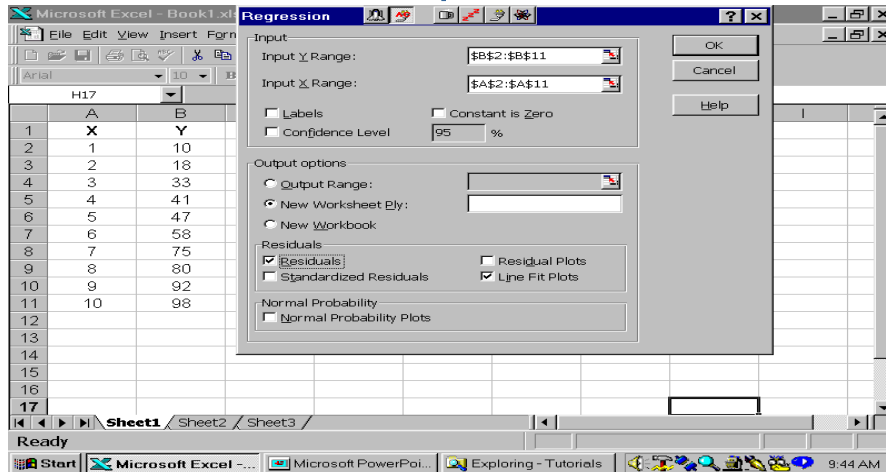
Excel Tutorials

How to do a Regression Analysis

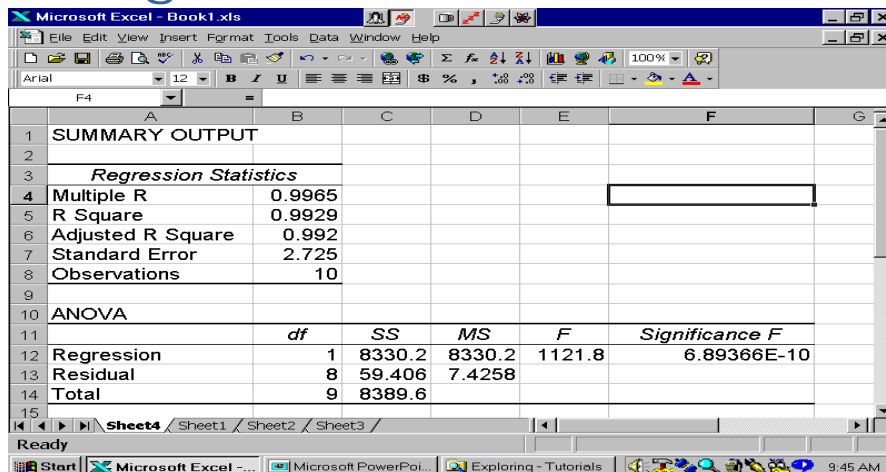
Click Tools/Data
Analysis/Regression



Enter Y and X Data Ranges and Click Desired Output Boxes



Output: Regression Statistics and Regression ANOVA

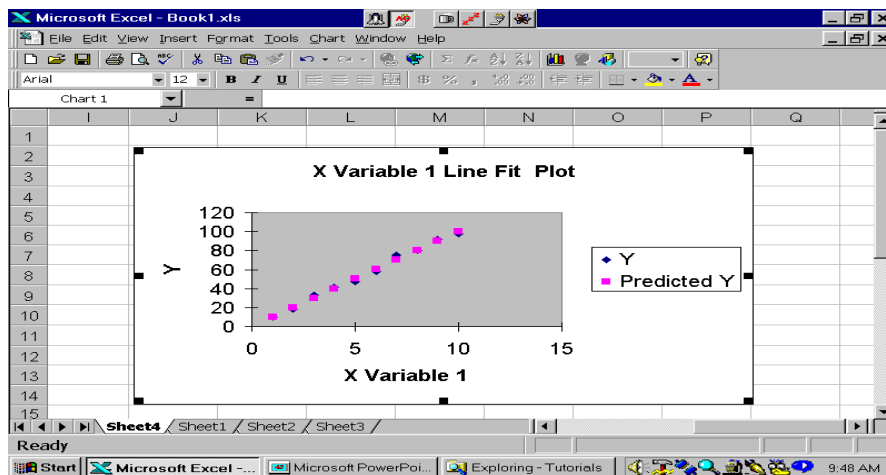


Output: Regression Coefficients and their Stats and Predicted Y's and Residuals

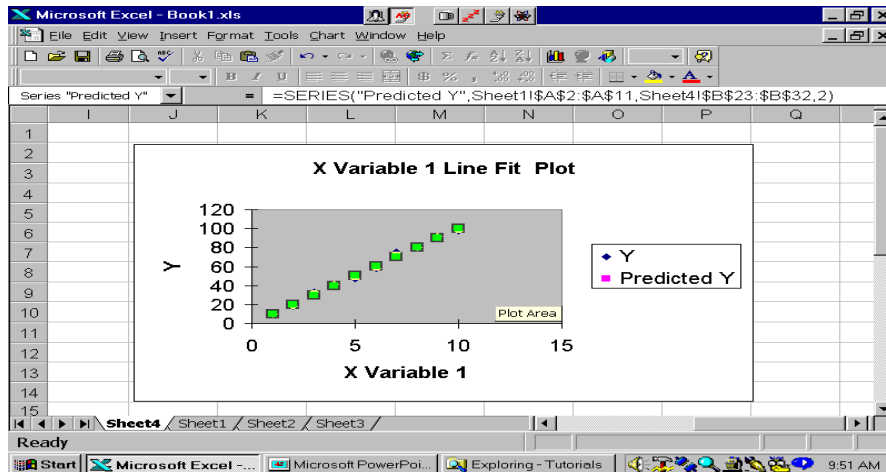
	Coefficients	Standard Error	t Stat	P-value	Lower 95%	Upper 95%	Lower 95.0%	Upper 95.0%
Intercept	-0.0666667	1.861546007	-0.036	0.9723	-4.3594	4.226069	-4.359	4.22607
X Variable 1	10.0484848	0.300015304	33.493	7E-10	9.35665	10.74032	9.3566	10.7403

Observation	Predicted Y	Residuals
1	9.98181818	0.018181818
2	20.030303	-2.03030303
3	30.0787879	2.921212121
4	40.1272727	0.872727273
5	50.1757576	-3.175757576
6	60.2242424	-2.224242424
7	70.2727273	4.727272727
8	80.3212121	-0.321212121
9	90.369697	1.63030303
10	100.418182	-2.418181818

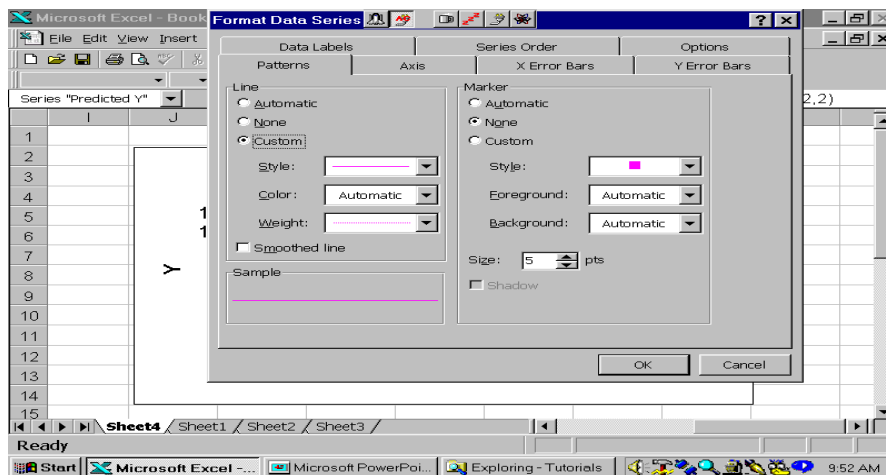
Output: Line Fit Plot



Change Line Fit from Symbols to a Line - Highlight Line and Double Click



Change Marker to None and Line to Custom



There it is

