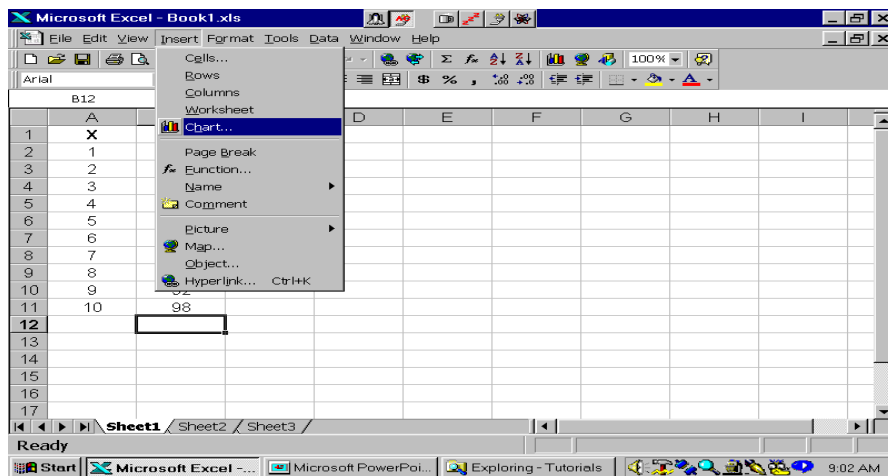


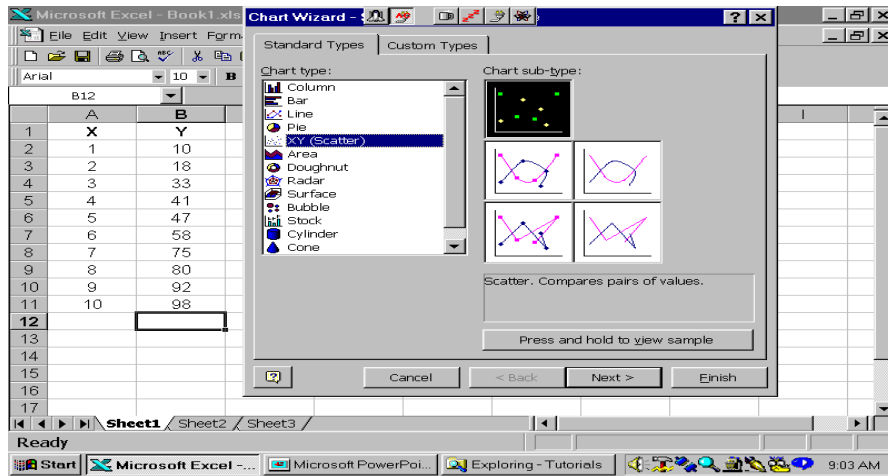
Excel Tutorial

How to Create a Scatter Plot

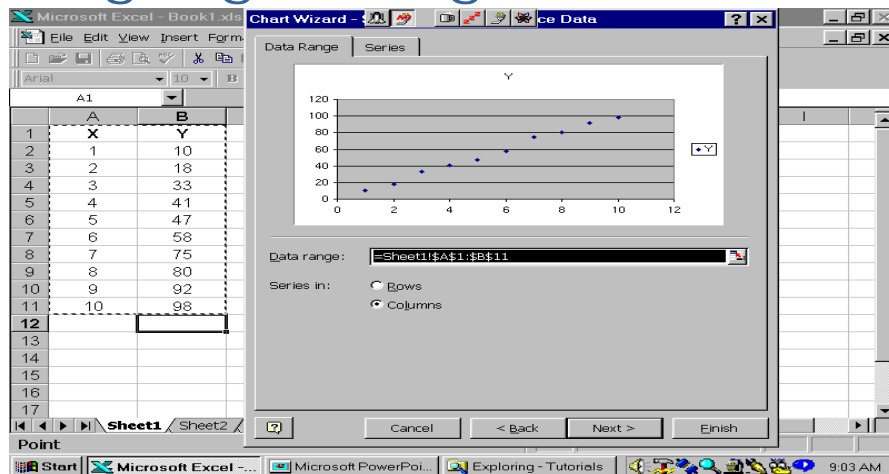
Click Insert/Chart



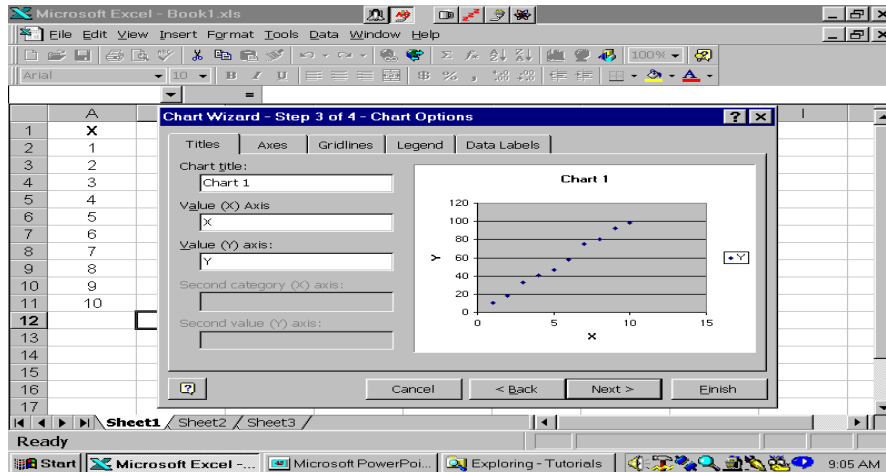
Click XY (Scatter)



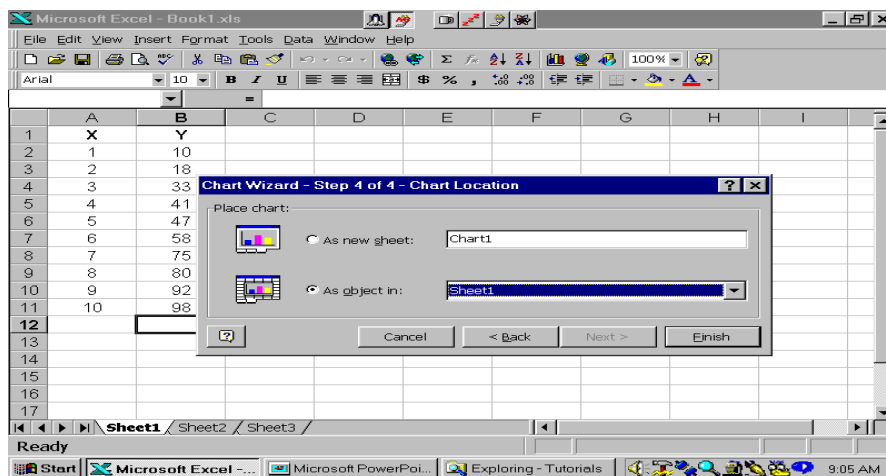
Make sure correct data range is shown or highlight range



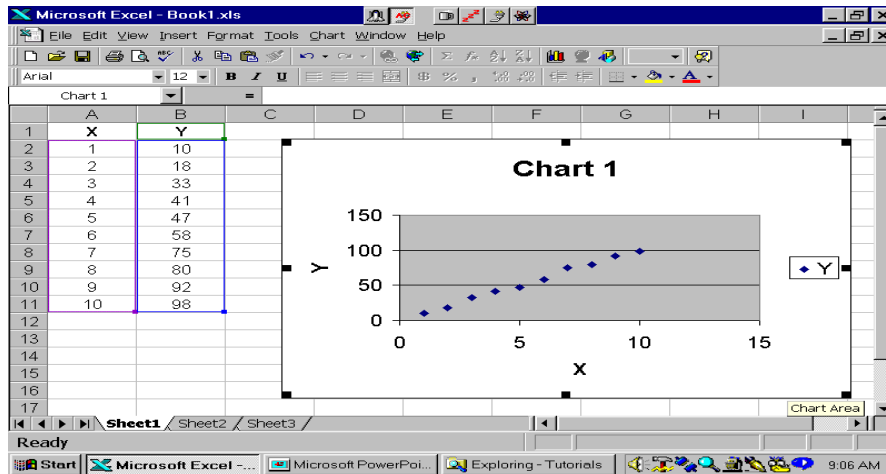
Type Chart Title and the Titles for the X and Y Axes



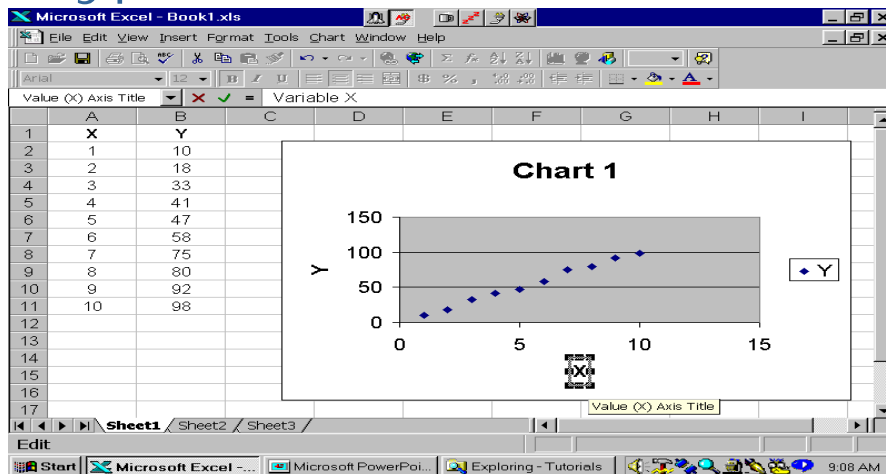
Choose to have the graph in a new worksheet or in this one



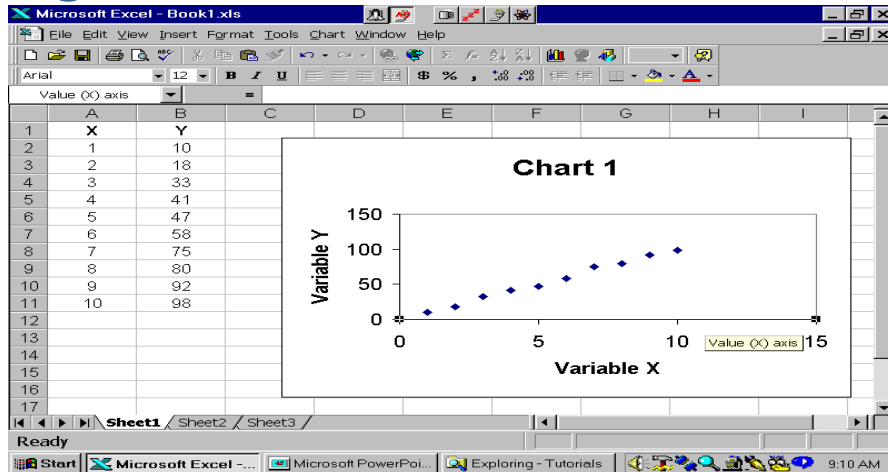
Here's the Chart



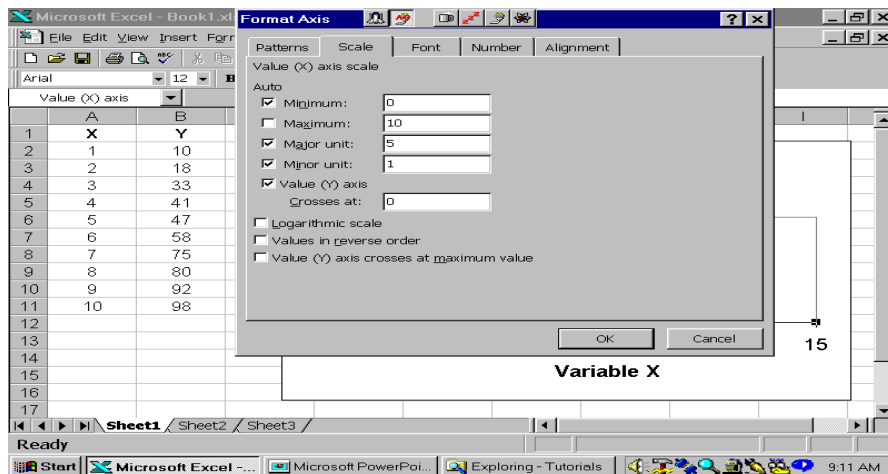
To edit axis titles,
highlight the title and
type new text



Clean up chart by removing shading and gridlines



Edit the axes scales by double clicking them



Here's the final chart

