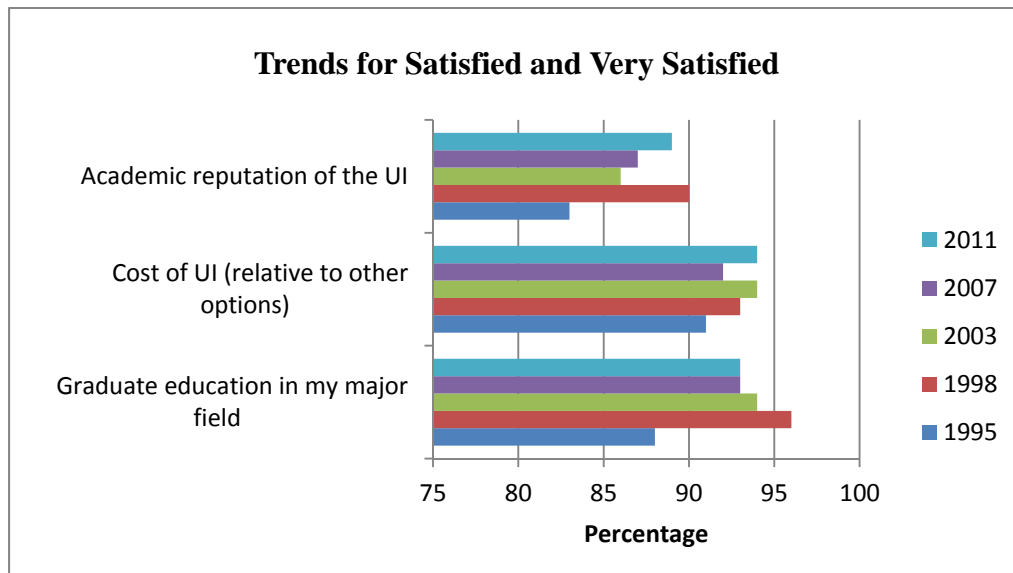
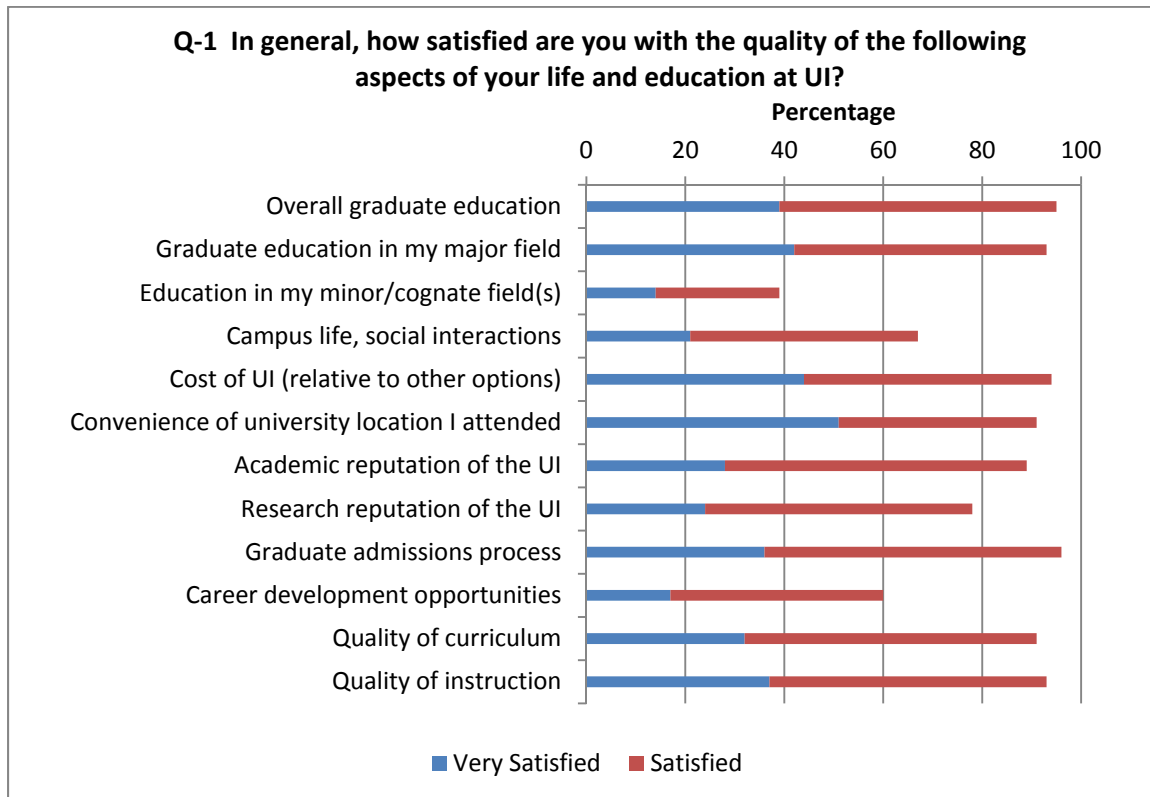


University of Idaho

A SURVEY OF GRADUATE ALUMNI - 2011

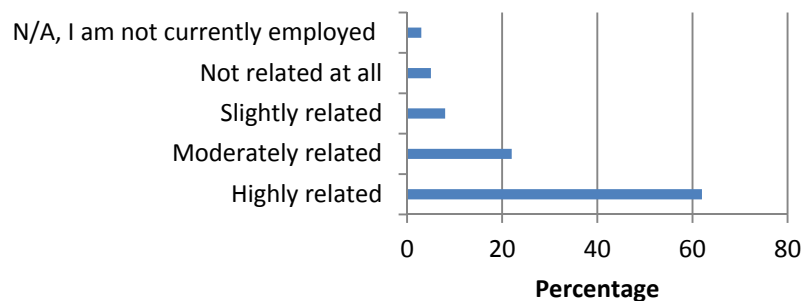
Classes of 2004, 2005, 2006, and 2007

Quality of Education

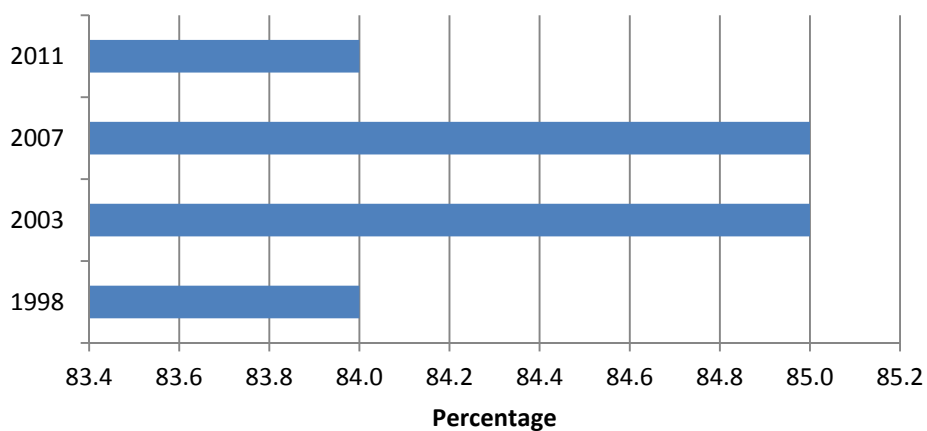


Employment 2011

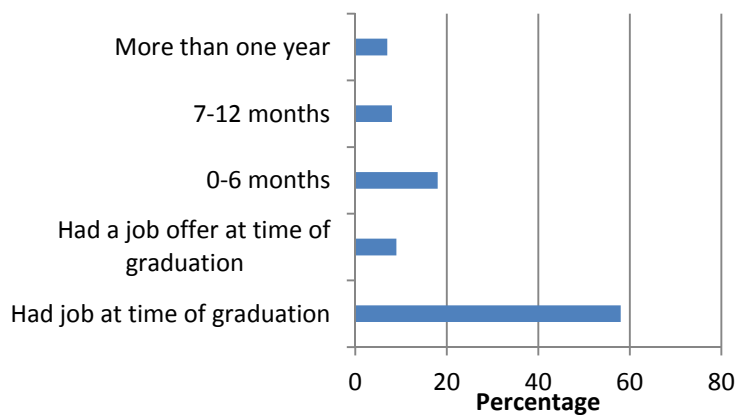
Q-3A How closely related are the knowledge and skills developed at UI to your current employment?



Trend in relationship of knowledge and skills to current employment - Highly and Moderately Related

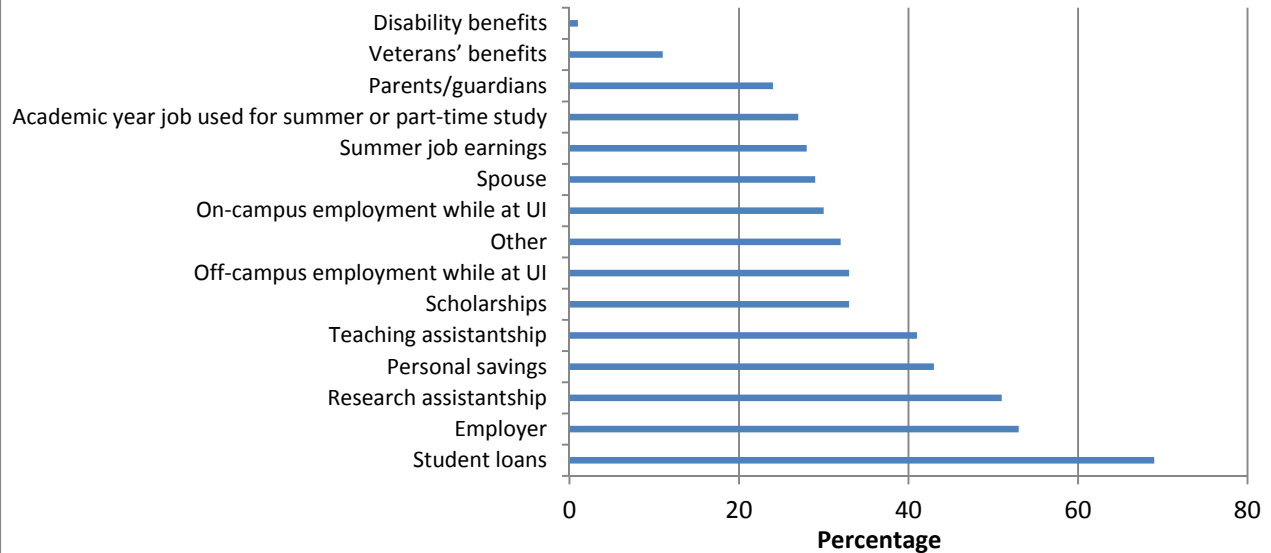


Q-3B How long did it take you to find employment upon graduation?

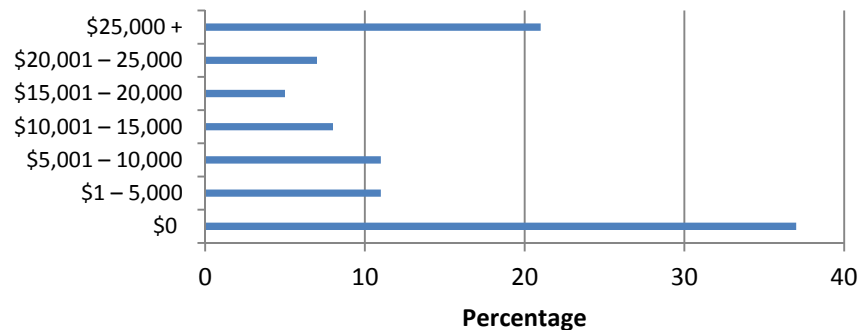


Student Finances 2011

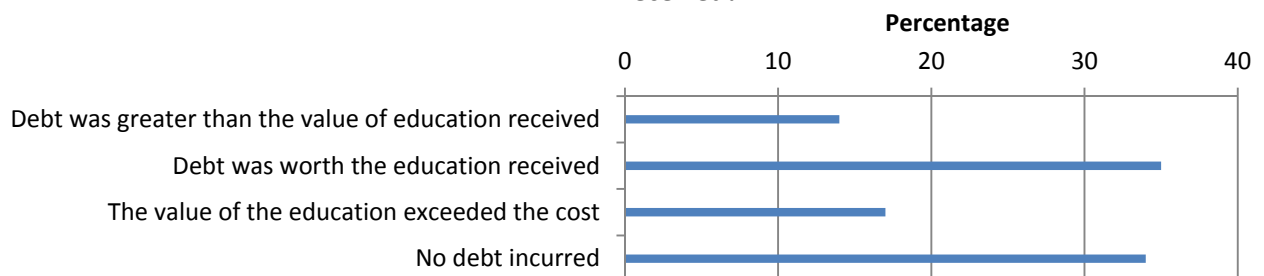
Primary Source of Graduate Student Funding



Amount of Student Debt Incurred



Q-6 In your opinion, how does the debt you incurred compare to the education you received?



Employment Trends

Q-4 What was your primary purpose in seeking the degree?

