
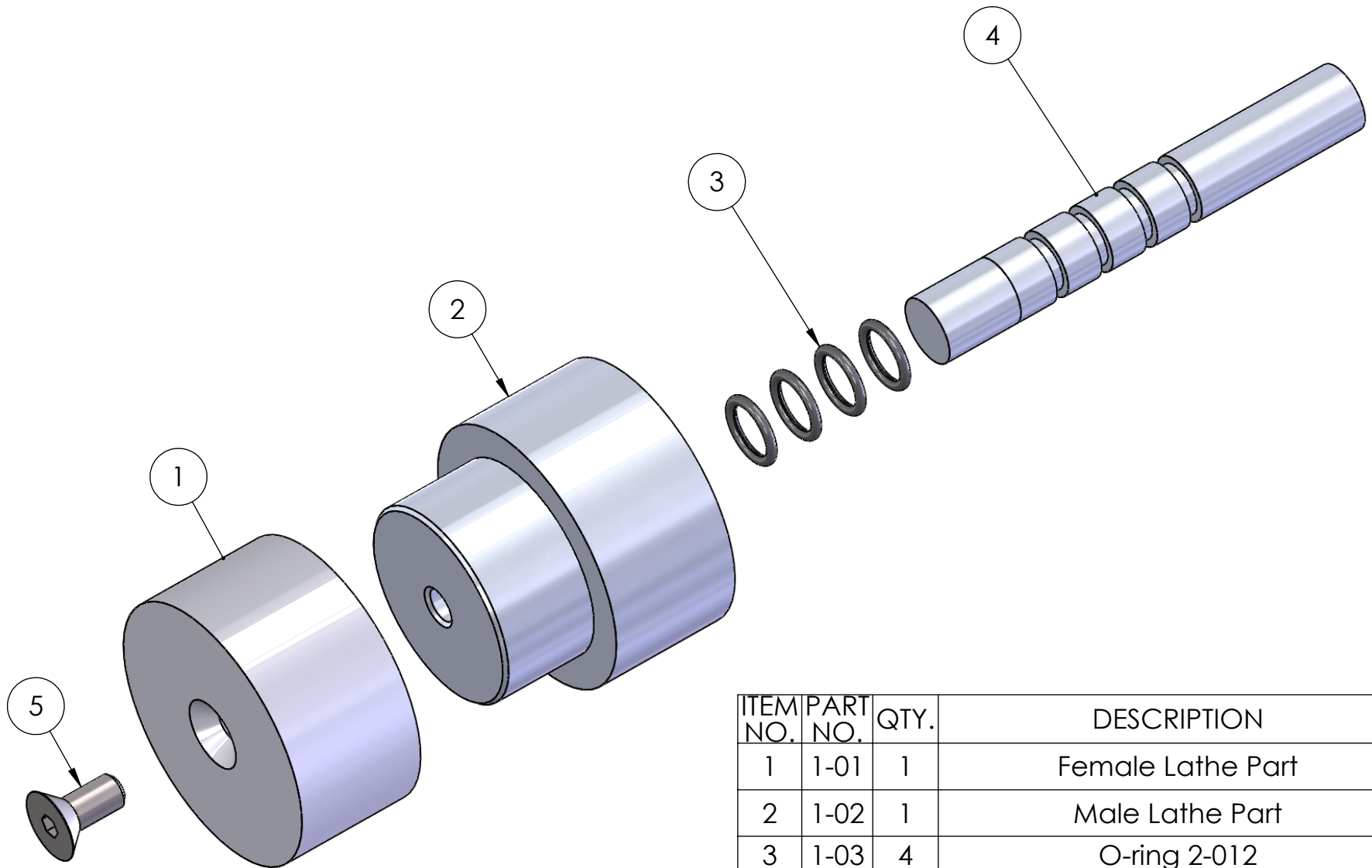


ITEM NO.	PART NO.	QTY	DESCRIPTION	SHEET NO
1	1-00	1	Block Project Lathe Assembly	2
2	2-00	1	Block Project Block Assembly	6

<b>PROPRIETARY AND CONFIDENTIAL</b> THE INFORMATION CONTAINED IN THIS DRAWING IS THE SOLE PROPERTY OF UNIVERSITY OF IDAHO, ME DEPARTMENT. ANY REPRODUCTION IN PART OR AS A WHOLE WITHOUT THE WRITTEN PERMISSION OF UNIVERSITY OF IDAHO, ME DEPARTMENT IS PROHIBITED.		DIMENSIONS ARE IN INCHES THIRD ANGLE PROJECTION 		<b>BLOCK PROJECT</b>	
		MATERIAL:			
DEFAULT TOLERANCES:		DESCRIPTION: <b>Block Project</b>		<b>UNIVERSITY OF IDAHO ME DEPARTMENT</b>	
LINEAR: X.±.25 X.X±.1 X.XX±.01 X.XXX±.002	ANGULAR: X.±.2 X.X±1 X.XX±0.30°	CHECKED BY: <b>Russ Porter</b>	DATE: <b>7/26/2012</b>		
		DRAWN BY: <b>Andrew Engel</b>	DATE: <b>5/13/2015</b>	PART #: <b>0-00</b>	QTY: <b>1</b>
		FILE NAME: <b>0-00 Final Assembly.SLDPRT</b>		SCALE: <b>1:1</b>	SHEET: <b>1 OF 8</b>



ITEM NO.	PART NO.	QTY.	DESCRIPTION	SHEET NO.
1	1-01	1	Female Lathe Part	3
2	1-02	1	Male Lathe Part	4
3	1-03	4	O-ring 2-012	--
4	1-04	1	Lathe Pin	5
5	1-05	1	FHS 1/4-20 x 5/8"	--

**PROPRIETARY AND CONFIDENTIAL**  
 THE INFORMATION CONTAINED IN THIS DRAWING IS THE SOLE PROPERTY OF UNIVERSITY OF IDAHO, ME DEPARTMENT. ANY REPRODUCTION IN PART OR AS A WHOLE WITHOUT THE WRITTEN PERMISSION OF UNIVERSITY OF IDAHO, ME DEPARTMENT IS PROHIBITED.

DIMENSIONS ARE IN INCHES  
 THIRD ANGLE PROJECTION 

MATERIAL:

**BLOCK PROJECT**

DEFAULT TOLERANCES:

LINEAR:  
 X. ± .25  
 X.X ± .1  
 X.XX ± .01  
 X.XXX ± .002

ANGULAR:  
 X. ± 2  
 X.X ± 1  
 X.XX ± 0.30'

DESCRIPTION: Block Project Lathe Assembly

CHECKED BY: Russ Porter

DATE: 7/26/2012

DRAWN BY: Andrew Engel

DATE: 5/13/2015

FILE NAME: 1-00 Lathe Assembly.SLDPR

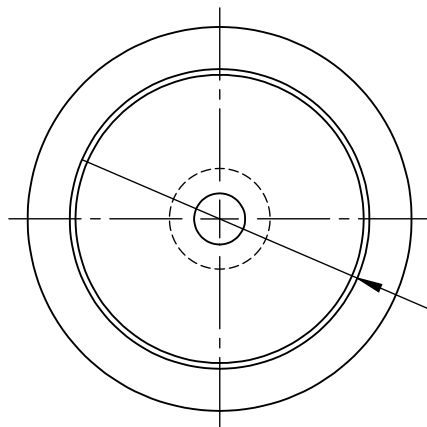
**UNIVERSITY OF IDAHO  
 ME DEPARTMENT**

PART #: 1-00

QTY: 1

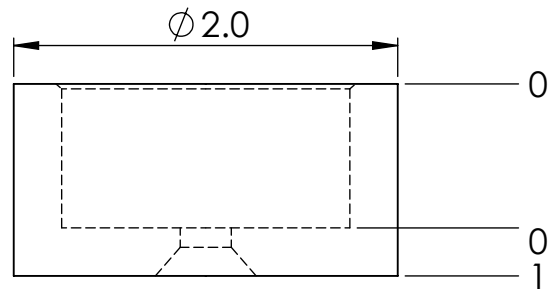
SCALE: 1:1

SHEET: 2 OF 8



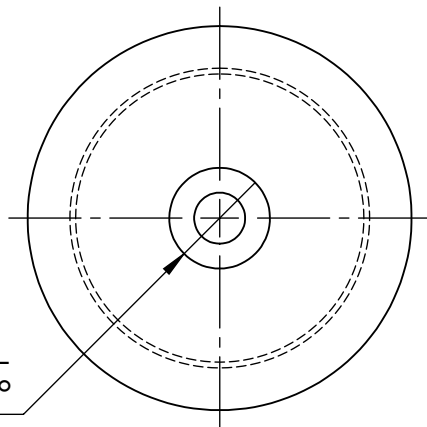
Top View

$\phi 1.501^{+0.003}_{0.000}$   
BREAK EDGE



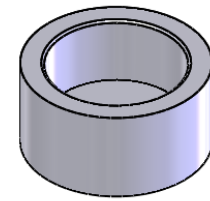
Front View

$0^{+0.02}_{0.00}$   
 $0.75^{+0.02}_{0.00}$   
 $1.00$

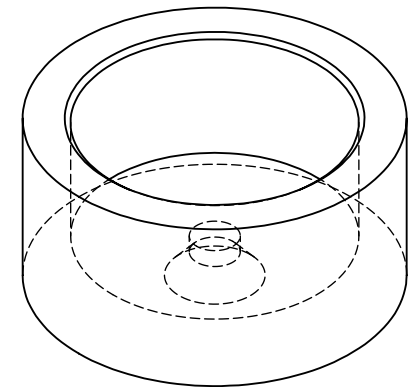



Bottom View

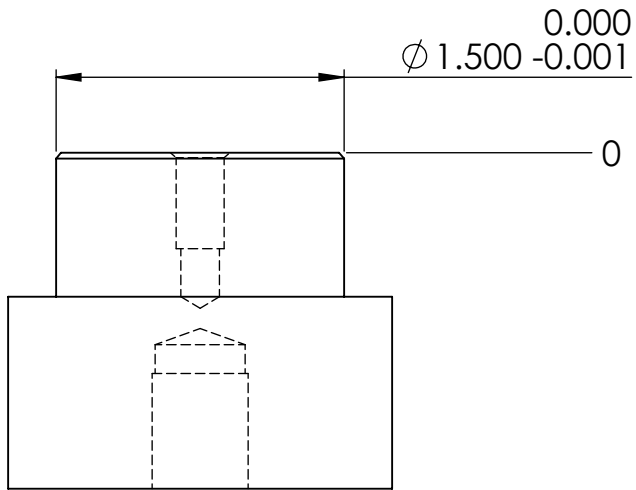
$\phi 0.27$  THRU ALL  
 $\checkmark \phi 0.52 \times 82^\circ$



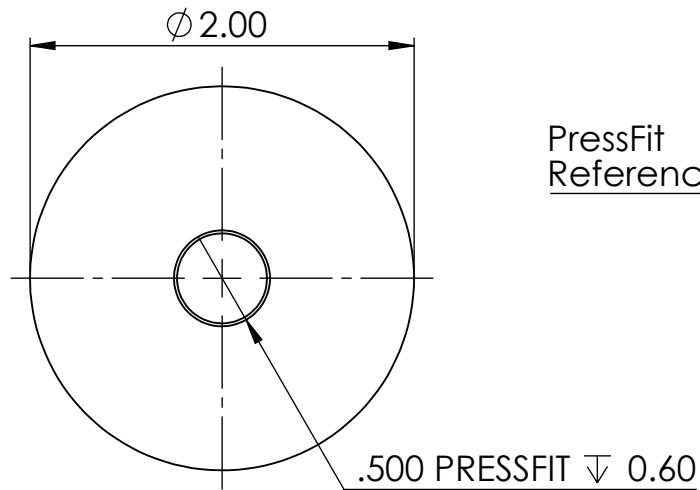
SCALE 1:2



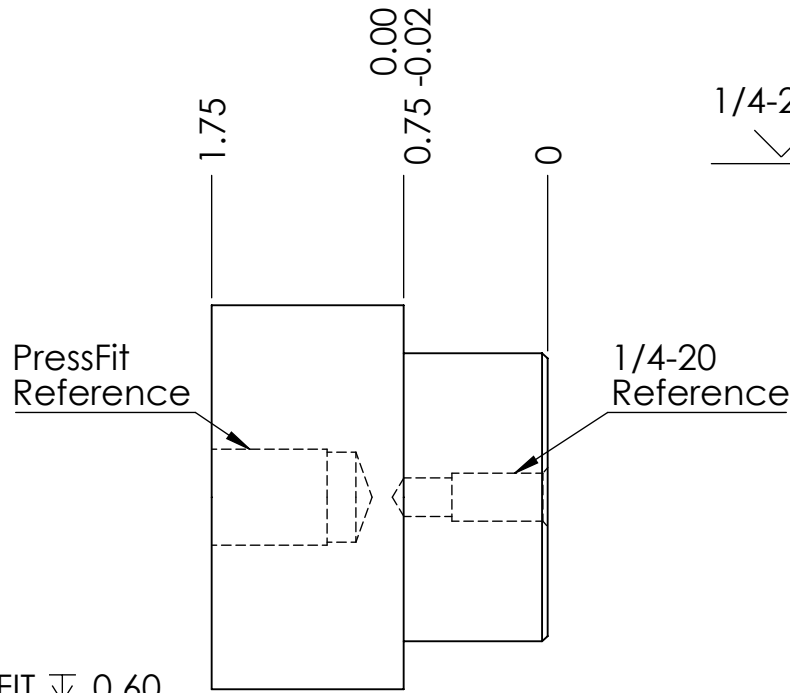
<div>PROPRIETARY AND CONFIDENTIAL</div> <div>THE INFORMATION CONTAINED IN THIS DRAWING IS THE SOLE PROPERTY OF UNIVERSITY OF IDAHO, ME DEPARTMENT. ANY REPRODUCTION IN PART OR AS A WHOLE WITHOUT THE WRITTEN PERMISSION OF UNIVERSITY OF IDAHO, ME DEPARTMENT IS PROHIBITED.</div>		<div>DIMENSIONS ARE IN INCHES</div> <div>THIRD ANGLE PROJECTION</div> <div></div>		<div>BLOCK PROJECT</div>	
		MATERIAL: 6061 T6 Aluminum			
DEFAULT TOLERANCES:		DESCRIPTION: Female Lathe Part		UNIVERSITY OF IDAHO ME DEPARTMENT	
LINEAR: X. ± .25 X.X ± .1 X.XX ± .01 X.XXX ± .002		ANGULAR: X. ± 2 X.X ± 1 X.XX ± 0.30'			
		CHECKED BY:	DATE:	PART #:	QTY:
		DRAWN BY: David Eld	DATE: 5/8/2013	PART #: 1-01	QTY: 1
		FILE NAME: Female Lathe Part.SLDPR1	SCALE: 1:1	SHEET: 3 OF 8	



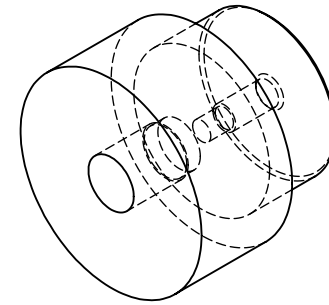
Front View



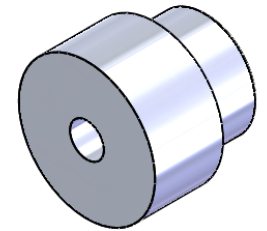
Top View



Side View

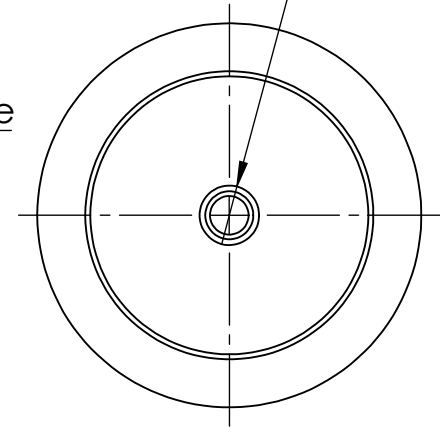


SCALE 1:1.5



SCALE 1:2

1/4-20 UNC -2B  $\nabla$  0.50  
 $\nabla$   $\phi$  0.31 x 82°



Bottom View

**PROPRIETARY AND CONFIDENTIAL**

THE INFORMATION CONTAINED IN THIS DRAWING IS THE SOLE PROPERTY OF UNIVERSITY OF IDAHO, ME DEPARTMENT. ANY REPRODUCTION IN PART OR AS A WHOLE WITHOUT THE WRITTEN PERMISSION OF UNIVERSITY OF IDAHO, ME DEPARTMENT IS PROHIBITED.

DIMENSIONS ARE IN INCHES  
 THIRD ANGLE PROJECTION

MATERIAL: 6061 T6 Aluminum

**BLOCK PROJECT**

**DEFAULT TOLERANCES:**

LINEAR:  
 X.  $\pm$  .25  
 X.X  $\pm$  .1  
 X.XX  $\pm$  .01  
 X.XXX  $\pm$  .002

ANGULAR:  
 X.  $\pm$  2  
 X.X  $\pm$  1  
 X.XX  $\pm$  0.30°

DESCRIPTION: Male Lathe Part

CHECKED BY:

DATE:

DRAWN BY: David Eld

DATE: 5/8/2013

FILE NAME: Male Lathe Part.SLDPR

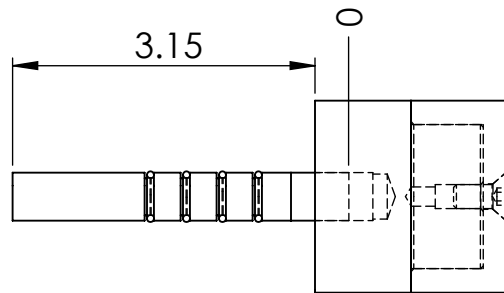
**UNIVERSITY OF IDAHO  
 ME DEPARTMENT**

PART #: 1-02

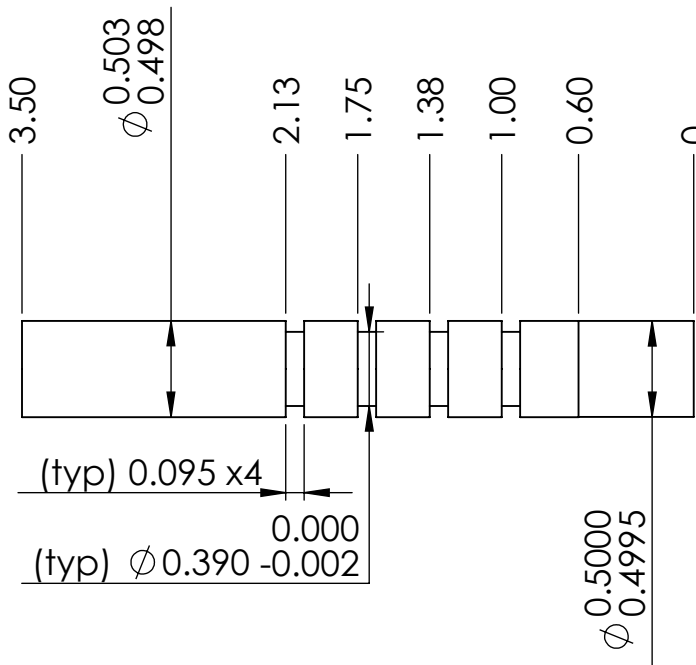
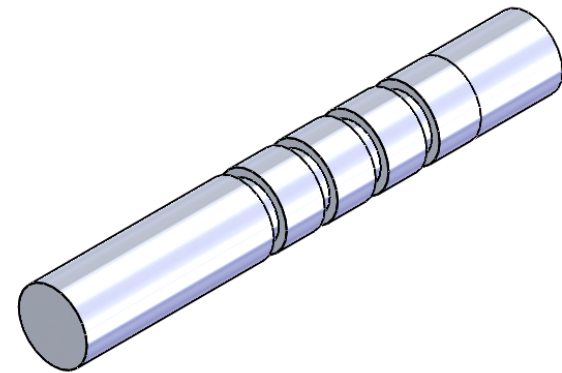
QTY: 1

SCALE: 1:1

SHEET: 4 OF 8



Front View  
SCALE 1:2



**PROPRIETARY AND CONFIDENTIAL**

THE INFORMATION CONTAINED IN THIS DRAWING IS THE SOLE PROPERTY OF UNIVERSITY OF IDAHO, ME DEPARTMENT. ANY REPRODUCTION IN PART OR AS A WHOLE WITHOUT THE WRITTEN PERMISSION OF UNIVERSITY OF IDAHO, ME DEPARTMENT IS PROHIBITED.

DIMENSIONS ARE IN INCHES  
THIRD ANGLE PROJECTION

MATERIAL: 6061 T6 Aluminum

**BLOCK  
PROJECT**

**DEFAULT TOLERANCES:**

LINEAR:  
X. ± .25  
X.X ± .1  
X.XX ± .01  
X.XXX ± .002

ANGULAR:  
X. ± 2  
X.X ± 1  
X.XX ± 0.30°

DESCRIPTION: Lathe Pin

CHECKED BY:

DATE:

DRAWN BY: David Eld

DATE: 5/13/2015

FILE NAME: Lathe Pin.SLDPR

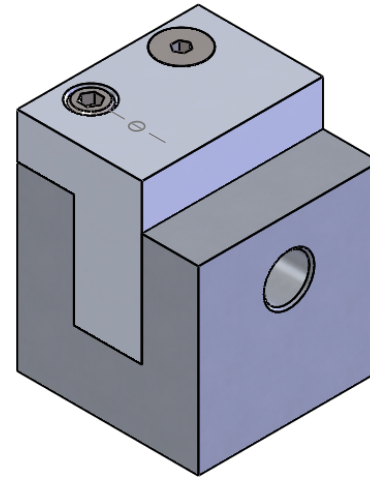
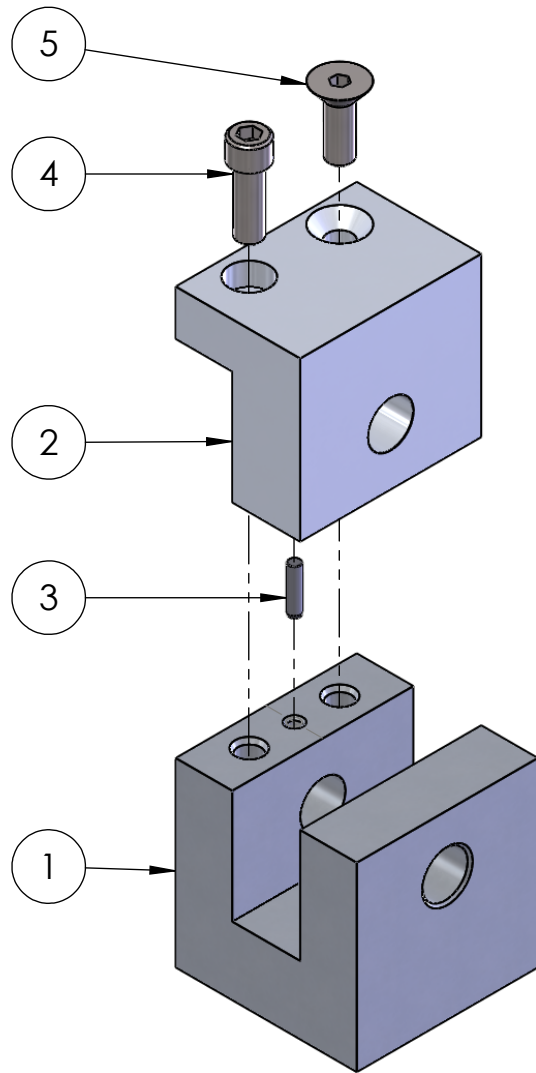
**UNIVERSITY OF IDAHO  
ME DEPARTMENT**

PART #: 1-04


QTY: 1

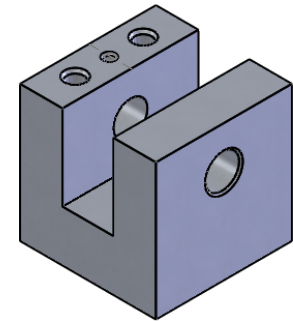
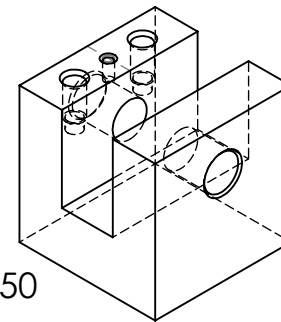
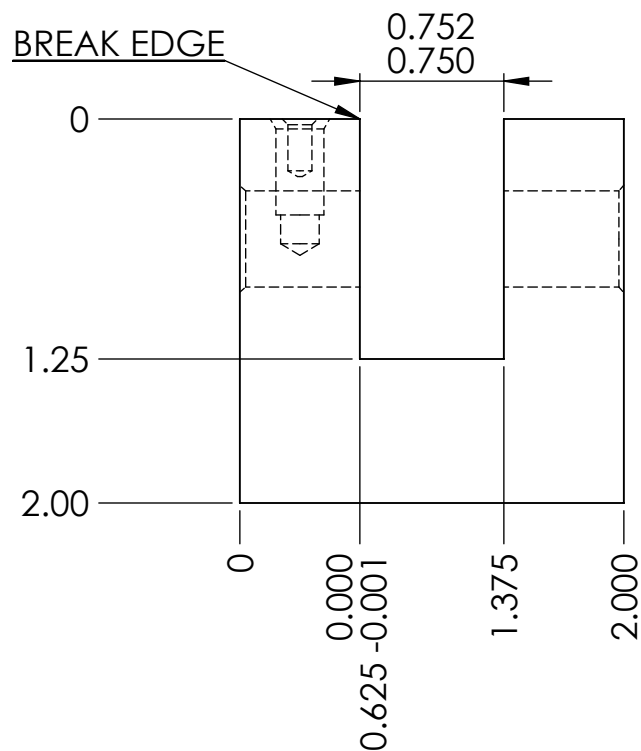
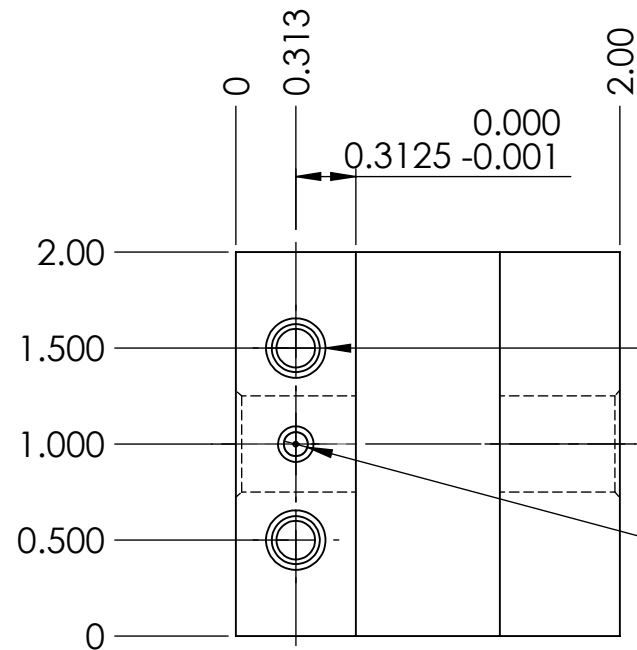
SCALE: 1:1

SHEET: 5 OF 8



ITEM NO.	PART NO	QTY.	DESCRIPTION	SHEET NO
1	2-01	1	Bottom Block	7
2	2-02	1	Top Block	8
3	2-03	1	0.125 x 0.5 Dowel Pin	---
4	2-04	1	SHCS 1/4-20 x 5/8"	---
5	2-05	1	FHS 1/4-20 x 5/8"	---

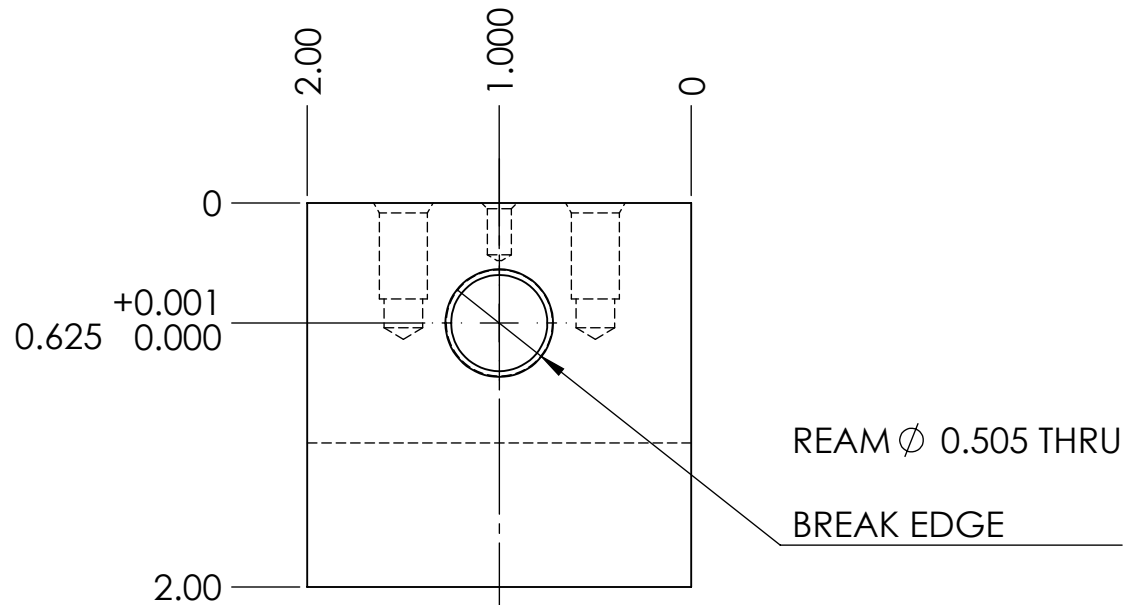
<b>PROPRIETARY AND CONFIDENTIAL</b> THE INFORMATION CONTAINED IN THIS DRAWING IS THE SOLE PROPERTY OF UNIVERSITY OF IDAHO, ME DEPARTMENT. ANY REPRODUCTION IN PART OR AS A WHOLE WITHOUT THE WRITTEN PERMISSION OF UNIVERSITY OF IDAHO, ME DEPARTMENT IS PROHIBITED.		DIMENSIONS ARE IN INCHES THIRD ANGLE PROJECTION 		BLOCK PROJECT	
		MATERIAL:			
DEFAULT TOLERANCES:		DESCRIPTION: Block Project Block Assembly		UNIVERSITY OF IDAHO ME DEPARTMENT	
LINEAR: X. ± .25 X.X ± .1 X.XX ± .01 X.XXX ± .002	ANGULAR: X. ± 2 X.X ± 1 X.XX ± 0.30'	CHECKED BY: Russ Porter	DATE: 7/26/2012		
		DRAWN BY: Andrew Engel	DATE: 5/13/2015	PART #: 2-00	QTY: 1
		FILE NAME: 2-00 Block Assembly.SLDPRT		SCALE: 1:1.5	SHEET: 6 OF 8



Scale 1:2

2X 1/4-20 UNC - 2B  $\nabla 0.50$   
 $\phi 0.31$  X 82°

1/8" PRESS FIT  $\nabla 0.30$



REAM  $\phi 0.505$  THRU

BREAK EDGE

**PROPRIETARY AND CONFIDENTIAL**

THE INFORMATION CONTAINED IN THIS DRAWING IS THE SOLE PROPERTY OF UNIVERSITY OF IDAHO, ME DEPARTMENT. ANY REPRODUCTION IN PART OR AS A WHOLE WITHOUT THE WRITTEN PERMISSION OF UNIVERSITY OF IDAHO, ME DEPARTMENT IS PROHIBITED.

DIMENSIONS ARE IN INCHES  
 THIRD ANGLE PROJECTION

MATERIAL: 6061 T6 Aluminum

**BLOCK PROJECT**

**DEFAULT TOLERANCES:**

LINEAR:  
 X.  $\pm 0.25$   
 X.X  $\pm 0.1$   
 X.XX  $\pm 0.01$   
 X.XXX  $\pm 0.002$

ANGULAR:  
 X.  $\pm 2$   
 X.X  $\pm 1$   
 X.XX  $\pm 0.30$

**DESCRIPTION: Bottom Block**

CHECKED BY:

DATE:

DRAWN BY: David Eld

DATE: 5/13/2015

FILE NAME: Bottom Block.SLDPR

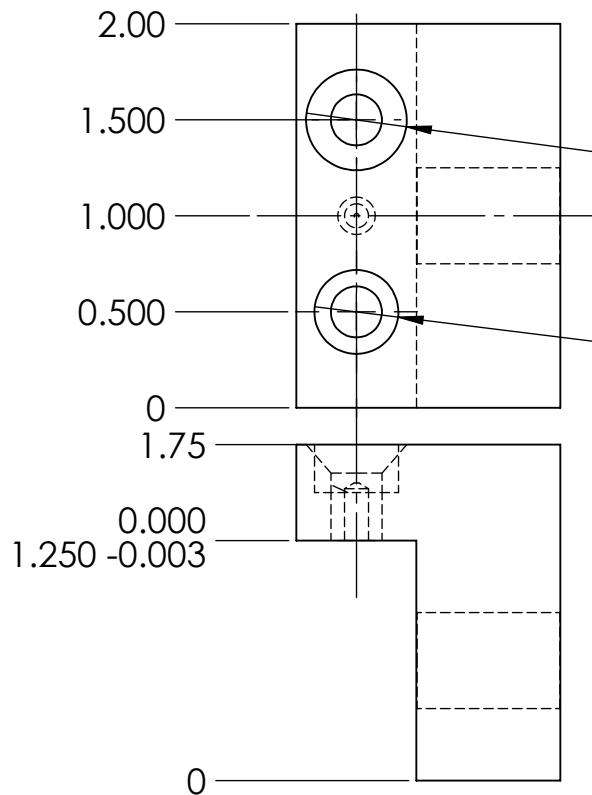
**UNIVERSITY OF IDAHO  
 ME DEPARTMENT**

PART #: 2-01

QTY: 1

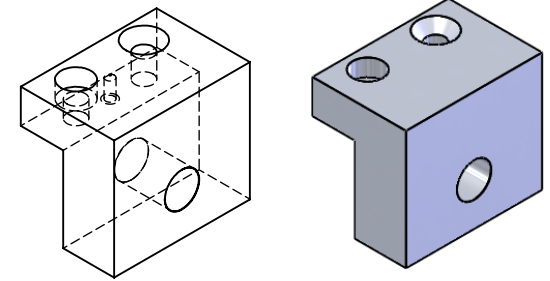
SCALE: 1:1

SHEET: 7 OF 8

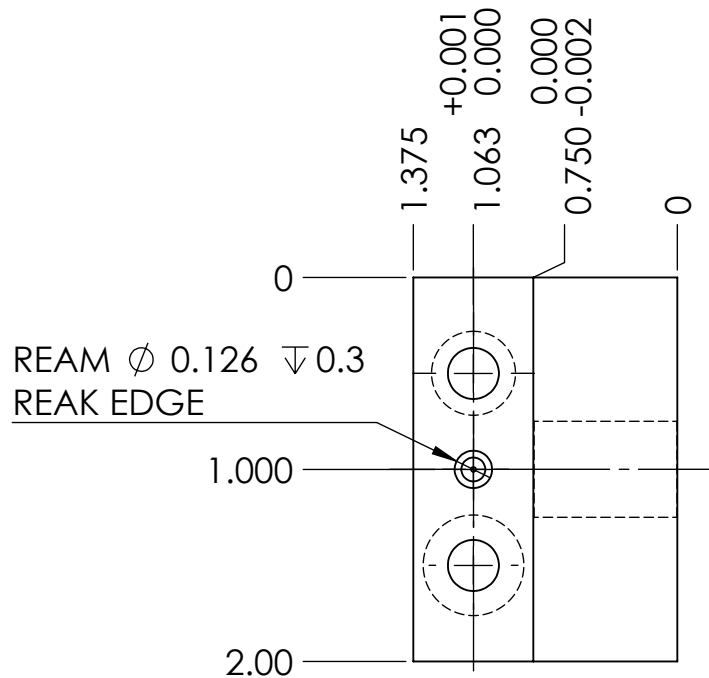
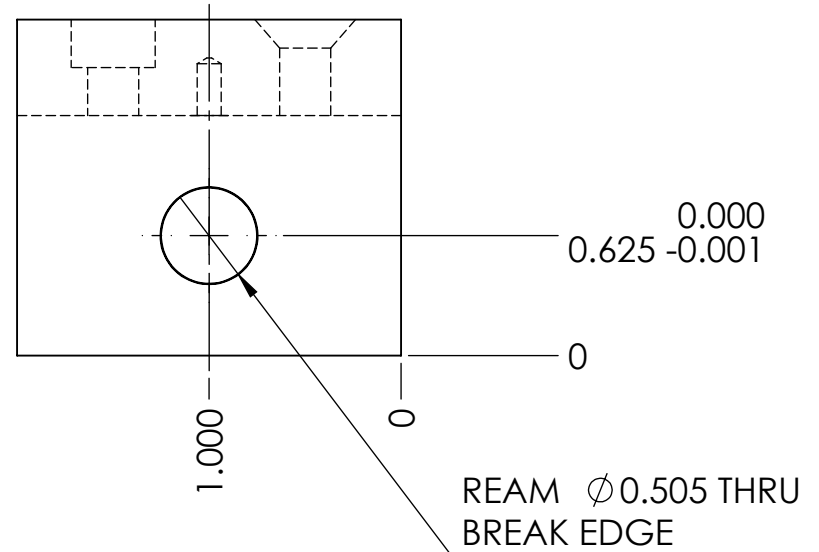


$\phi$  0.27 THRU ALL  
 $\checkmark$   $\phi$  0.52 X 82°

$\phi$  0.27 THRU ALL  
 $\square$   $\phi$  0.44  $\nabla$  0.25



SCALE 1:2



<b>PROPRIETARY AND CONFIDENTIAL</b> THE INFORMATION CONTAINED IN THIS DRAWING IS THE SOLE PROPERTY OF UNIVERSITY OF IDAHO, ME DEPARTMENT. ANY REPRODUCTION IN PART OR AS A WHOLE WITHOUT THE WRITTEN PERMISSION OF UNIVERSITY OF IDAHO, ME DEPARTMENT IS PROHIBITED.		DIMENSIONS ARE IN INCHES THIRD ANGLE PROJECTION 		<b>BLOCK PROJECT</b>	
		MATERIAL: 6061 T6 Aluminum			
DEFAULT TOLERANCES:		DESCRIPTION: Top Block			<b>UNIVERSITY OF IDAHO ME DEPARTMENT</b>
LINEAR: X. ± .25 X.X ± .1 X.XX ± .01 X.XXX ± .002	ANGULAR: X. ± 2 X.X ± 1 X.XX ± 0.30°	CHECKED BY:	DATE:		
		DRAWN BY: David Eld	DATE: 5/13/2015	PART #: 2-02	
		FILE NAME: Top Block.SLDPRT		QTY: 1	
		SCALE: 1:1			SHEET: 8 OF 8