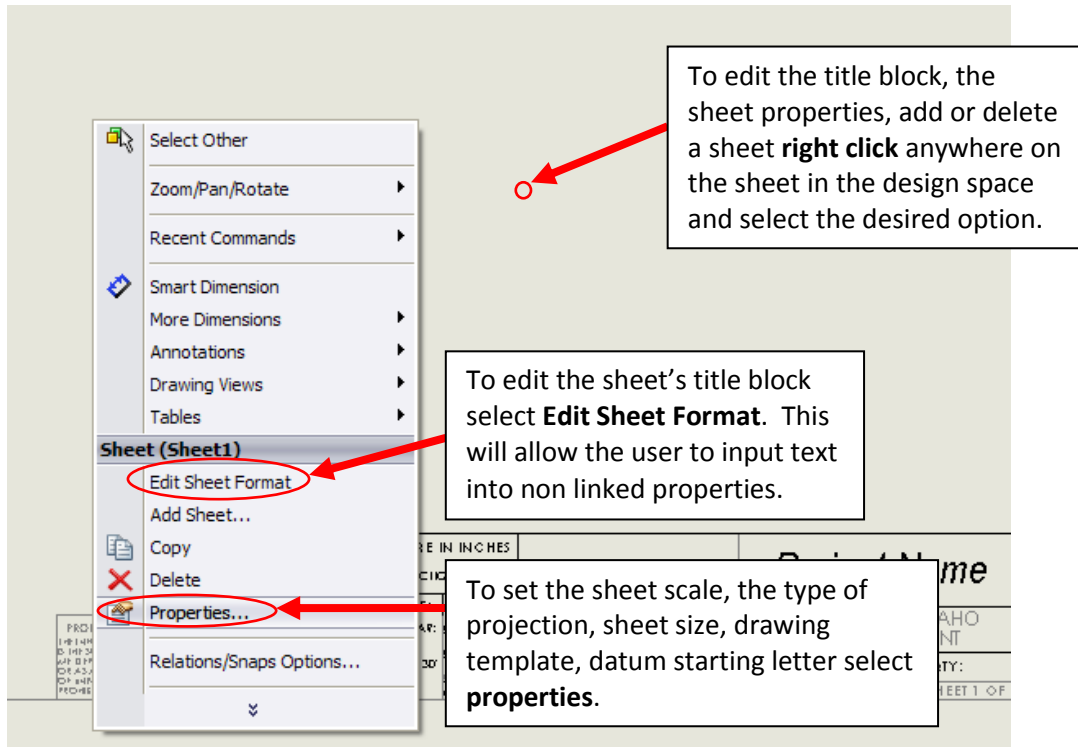


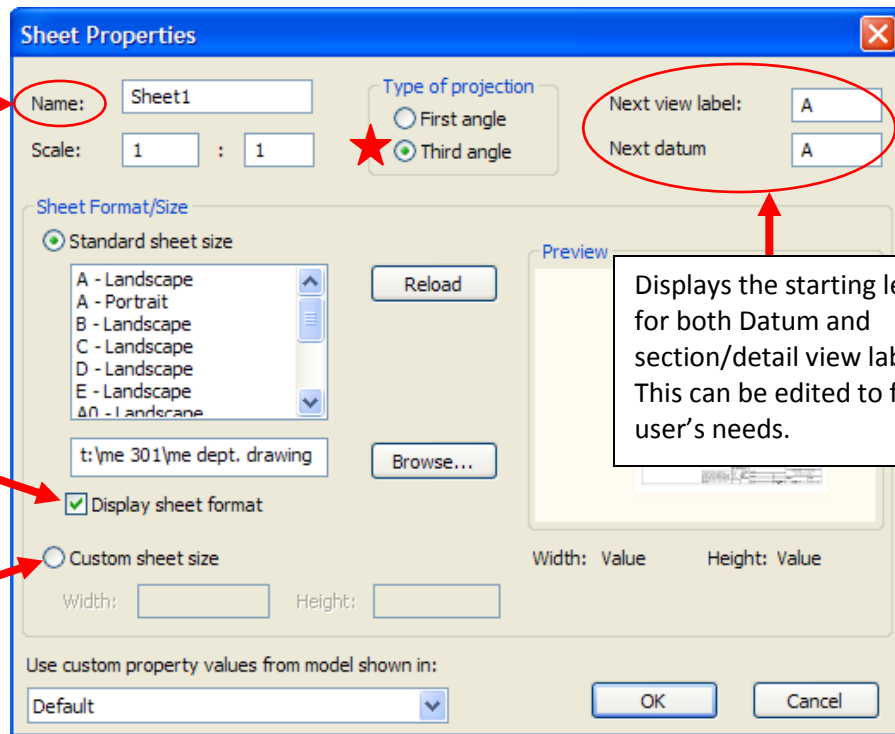
Sheet Properties



Change the name of the sheet to aid in finding parts, subassemblies, and full assemblies, more quickly in large drawing packages.

Displays the sheet template being used. Use browse to select another template.

Create a custom sheet size if the default is not desired.



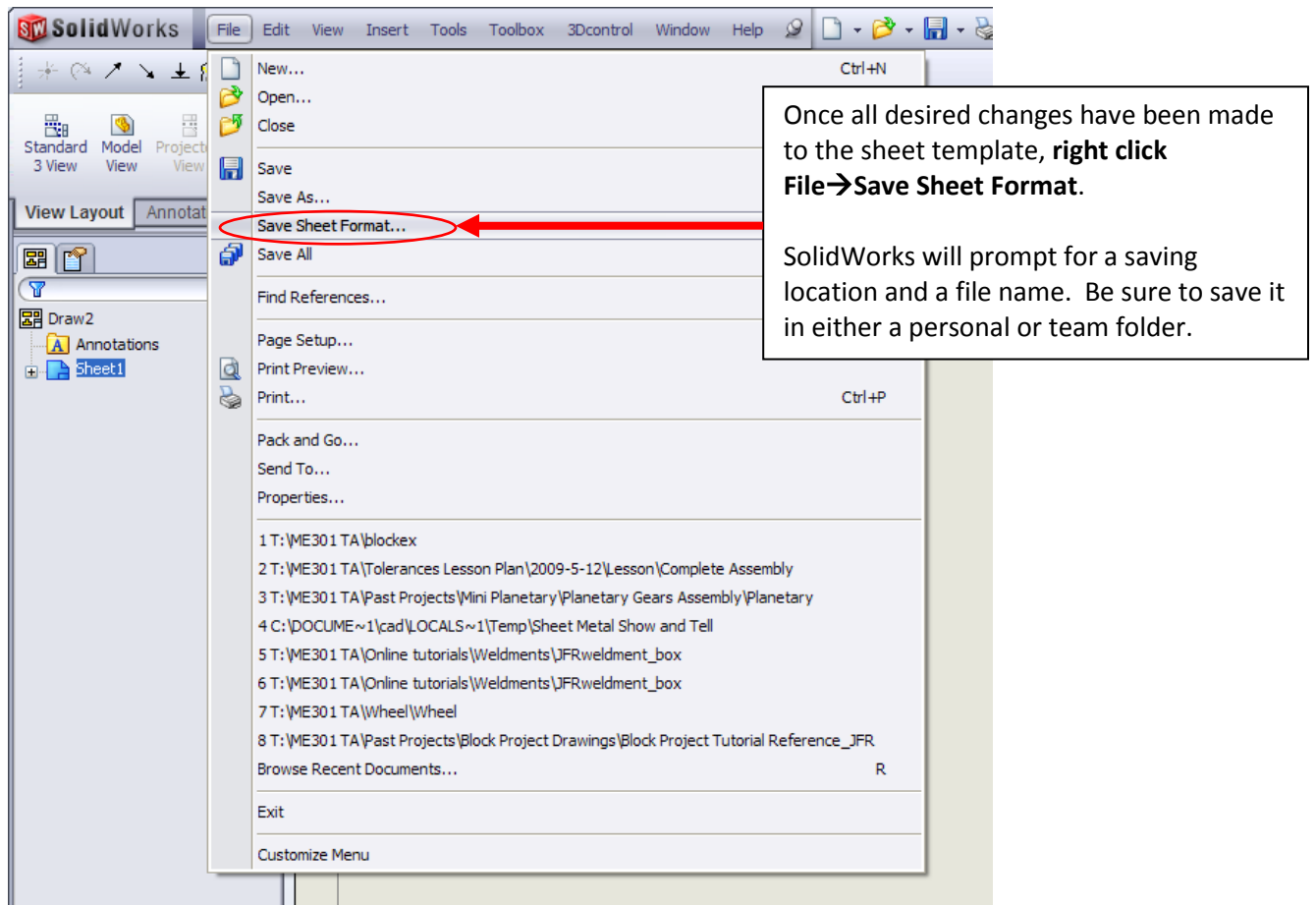
Displays the starting letters for both Datum and section/detail view labels. This can be edited to fit the user's needs.

★ See Third Angle VS First Angle for additional information.
 Note: Third angle must always be used for this course.

Creating a New Sheet Template

Description: It is often useful to create a standard template for team projects to ensure a standard drawing package format and to eliminate the need to re-enter standard information, such as the project name.

Note: SolidWorks will not save the type of projection with the sheet format. Always check drawings to ensure they are employing third angle projection.



Adding/Renaming/Deleting Sheets

