

One of these things is not like the others

WALTER CRONKITE
SCHOOL OF JOURNALISM
& MASS COMMUNICATIONS

may_22_2010

GREEN TEAM

Allyson Pease
Paul Wolfe
David Bartley
Shady Attia
Marc Myers
Karla Grijalva

hypothesis

- 1 **Multiple spaces within the building will have same average temperature during a weekend day.**
- 2 **Multiple spaces within the building will have same relative humidity during a weekend day.**

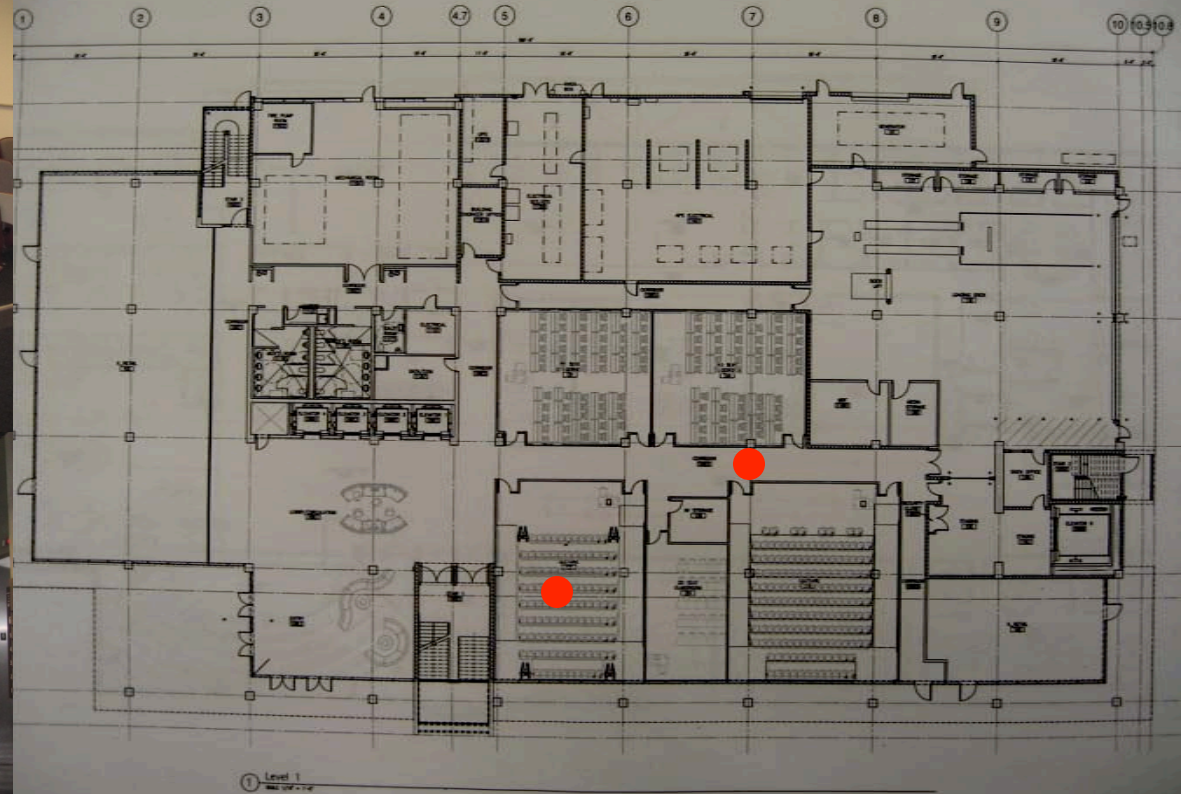
methodology

- 1 Selection of seven different spaces in the building for the measurement of temperature and relative humidity.**
- 2 Use of HOBO U12 to collect data, setting collection data intervals of 5 minutes for a period of 1hr.**
- 3 Comparison of collected data.**

building locations

First Floor

1 Classroom (2 locations) + Corridor

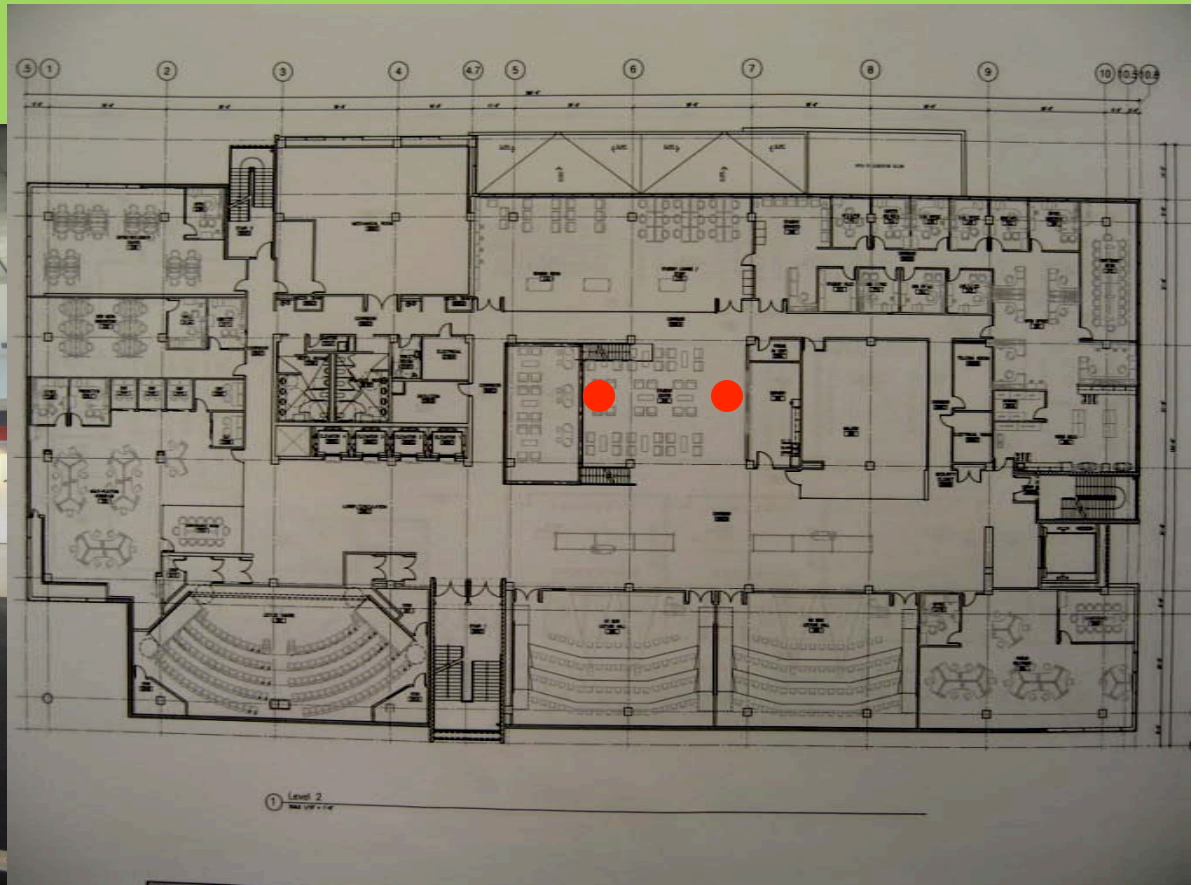


1 Level 1

building locations

Second Floor

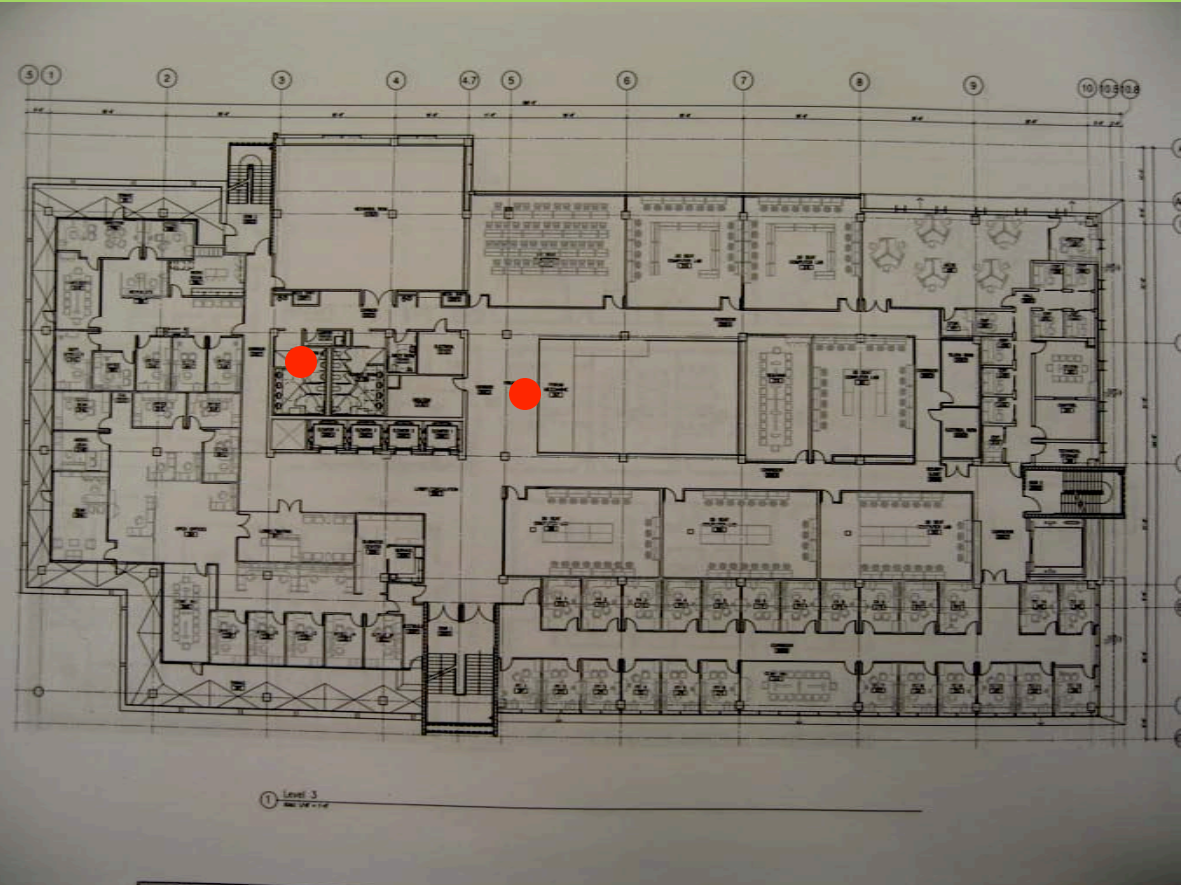
2 Student Center (2 locations)



building locations

Third Floor

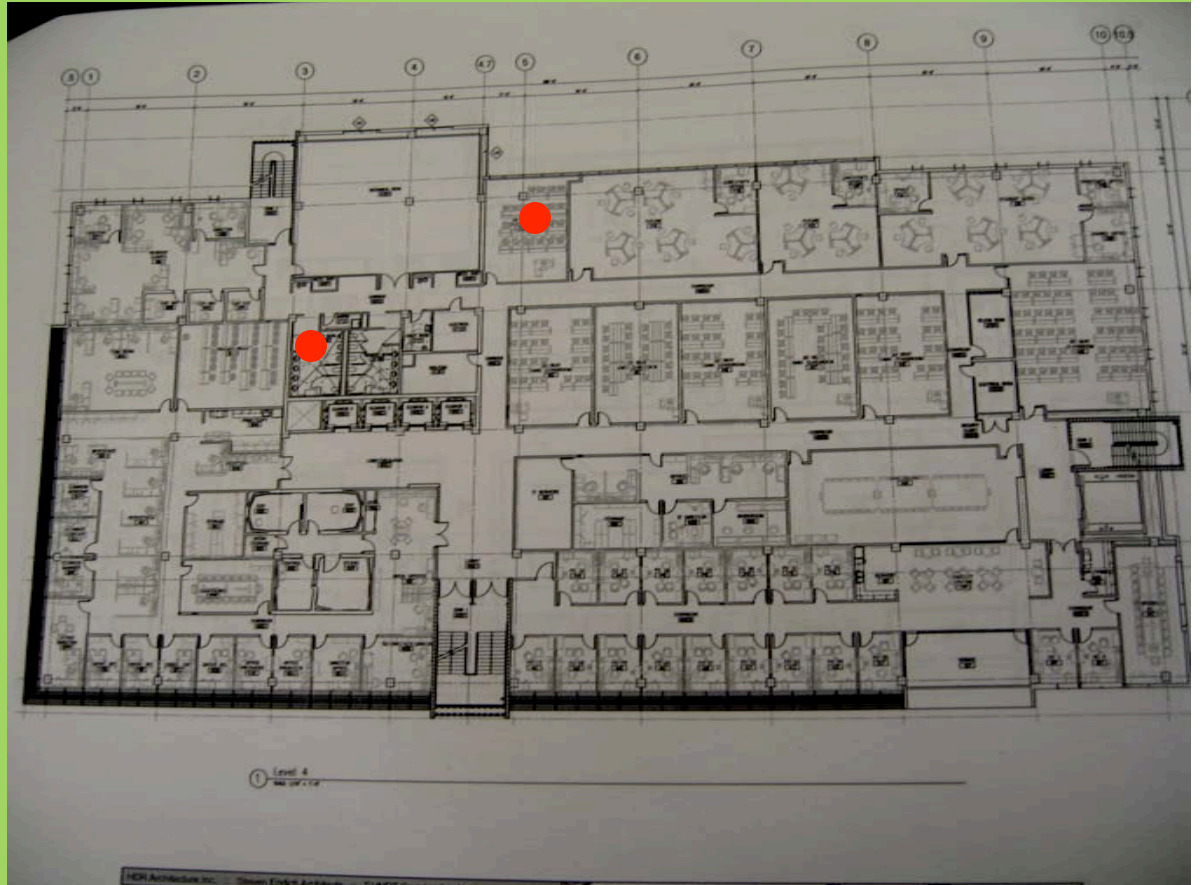
3 Mezzanine + Restrooms



building locations

Forth Floor

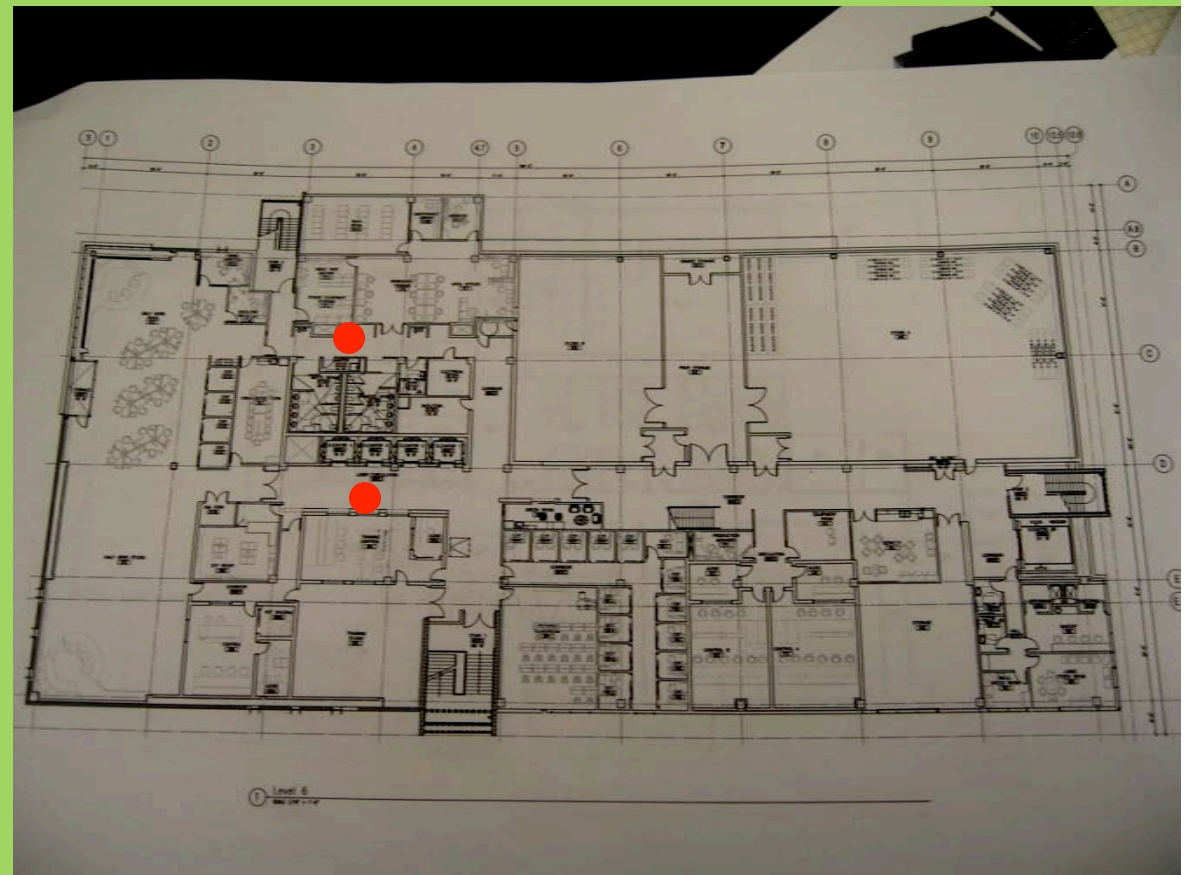
4 Classroom (2 locations) + Restrooms



building locations

Sixth Floor

6 Restroom + Corridor



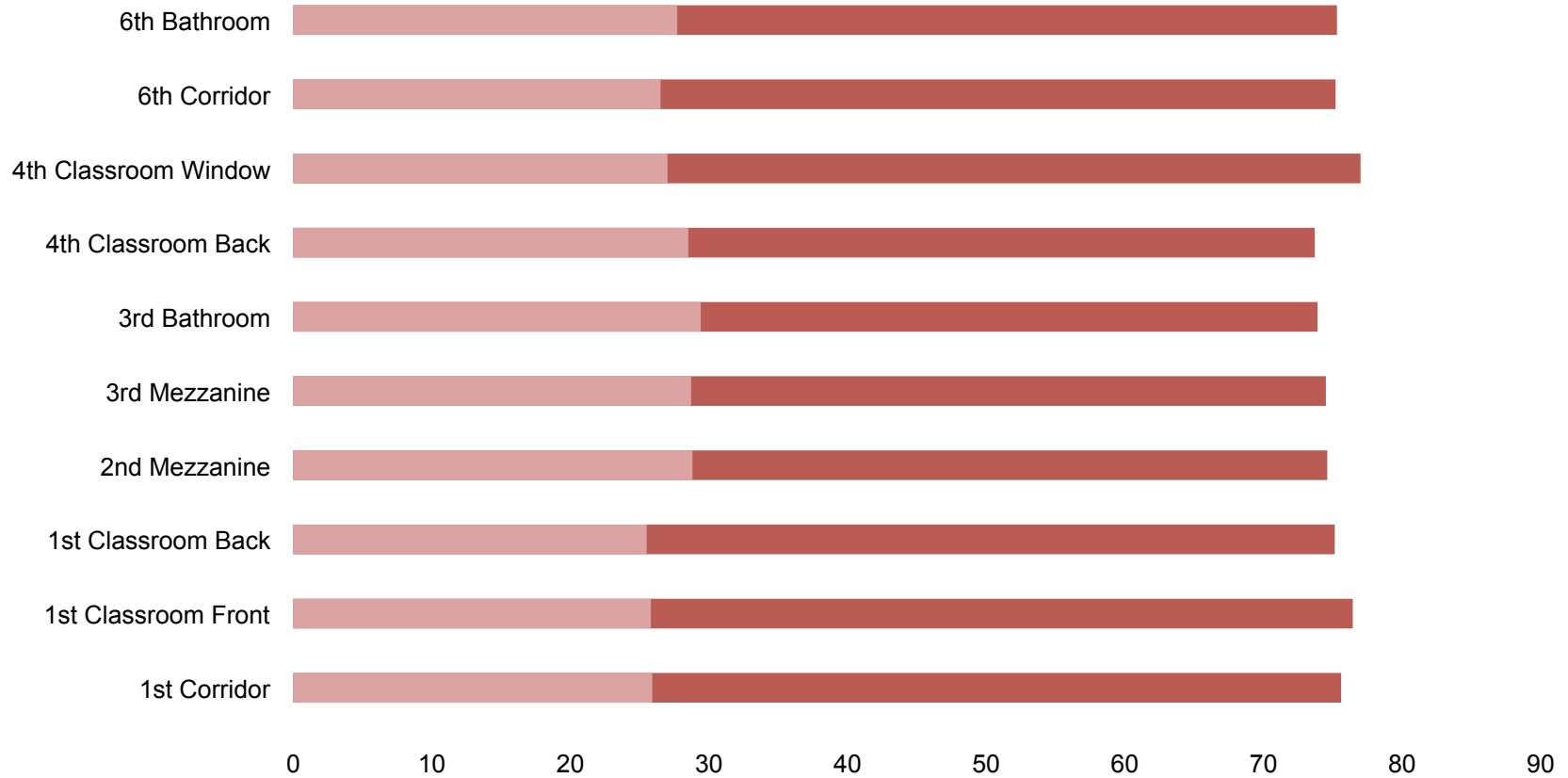
Findings/analysis Temperature

1st Corridor	75.6
1st Classroom Front	76.44
1st Classroom Back	75.14
2nd Mezzanine	74.6
3rd Mezzanine	74.5
3rd Bathroom	73.9
4th Classroom Back	73.7
4th Classroom Window	77
6th Corridor	75.2
6th Bathroom	75.3

Relative Humidity

1st Corridor	25.9
1st Classroom Front	25.8
1st Classroom Back	25.5
2nd Mezzanine	28.8
3rd Mezzanine	27.7
3rd Bathroom	29.4
4th Classroom Back	28.5
4th Classroom Window	27
6th Corridor	26.5
6th Bathroom	27.7

Temperature & Relative Humidity



	1st Corridor	1st Classroom Front	1st Classroom Back	2nd Mezzanine	3rd Mezzanine	3rd Bathroom	4th Classroom Back	4th Classroom Window	6th Corridor	6th Bathroom
Series1	75.6	76.44	75.14	74.6	74.5	73.9	73.7	77	75.2	75.3
Series2	25.9	25.8	25.5	28.8	28.7	29.4	28.5	27	26.5	27.7

findings/analysis

Maximum Temperature Difference = 3.3 F

Maximum RH Difference = 3.9%

conclusions

- 1 **Multiple spaces within the building did NOT have same average temperature during a weekend day.**
- 2 **Multiple spaces within the building did NOT have same relative humidity during a weekend day.**

Lessons learned

- 1 The highest temperatures were recorded along the building envelope.**
- 2 The first floor spaces had a lower humidity than the rest of the building.**
- 3 The mezzanine had identical temperatures on the 2nd and 3rd floor.**