

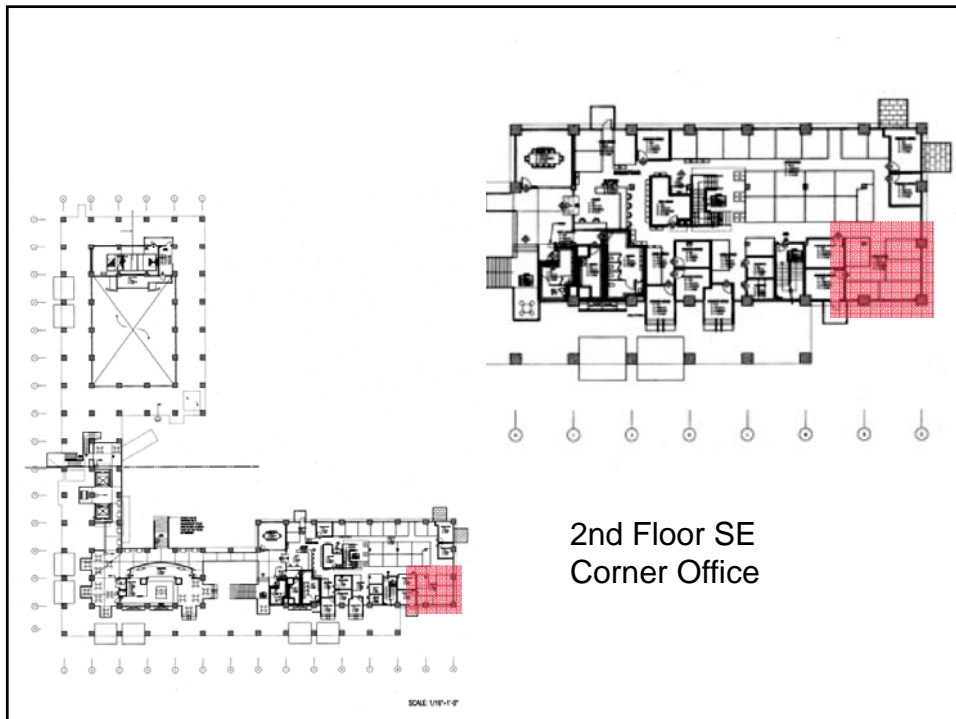
Team Entropy



Solar Conditions
within and without

Jake Keeler*, *University of Oregon*
Elliot Meier*, *University of Oregon*
Lisa Fabula, *AIA San Diego*
Kathleen Luttrell, *Boulder, CO*
Tayler Mikosz, *Ball State University*

* *facilitators*



2nd Floor SE
Corner Office

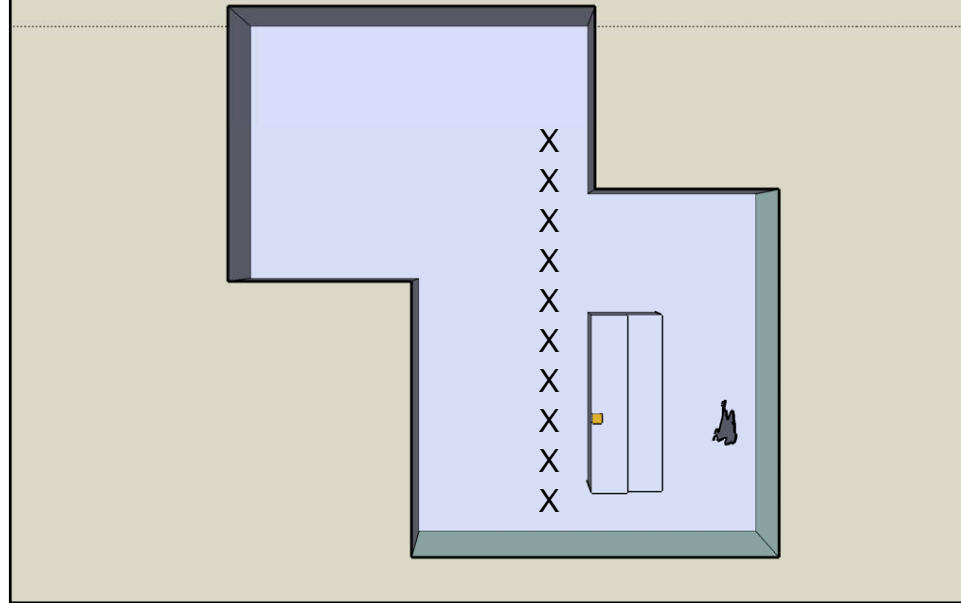
The lightshelves that were proposed but not installed in the SE corner of the 2nd floor offices, would have created more even light levels throughout the space.



Office base case

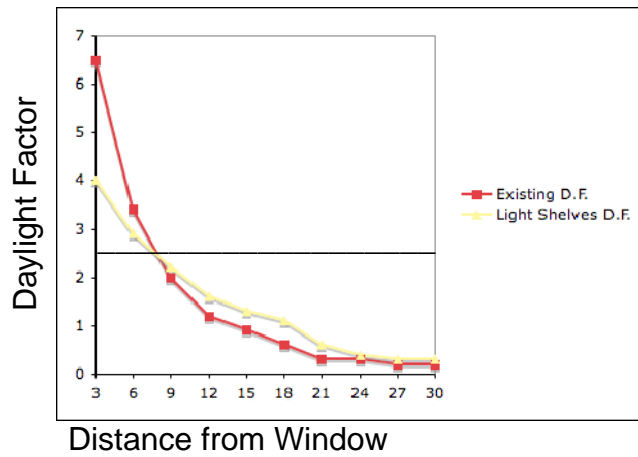
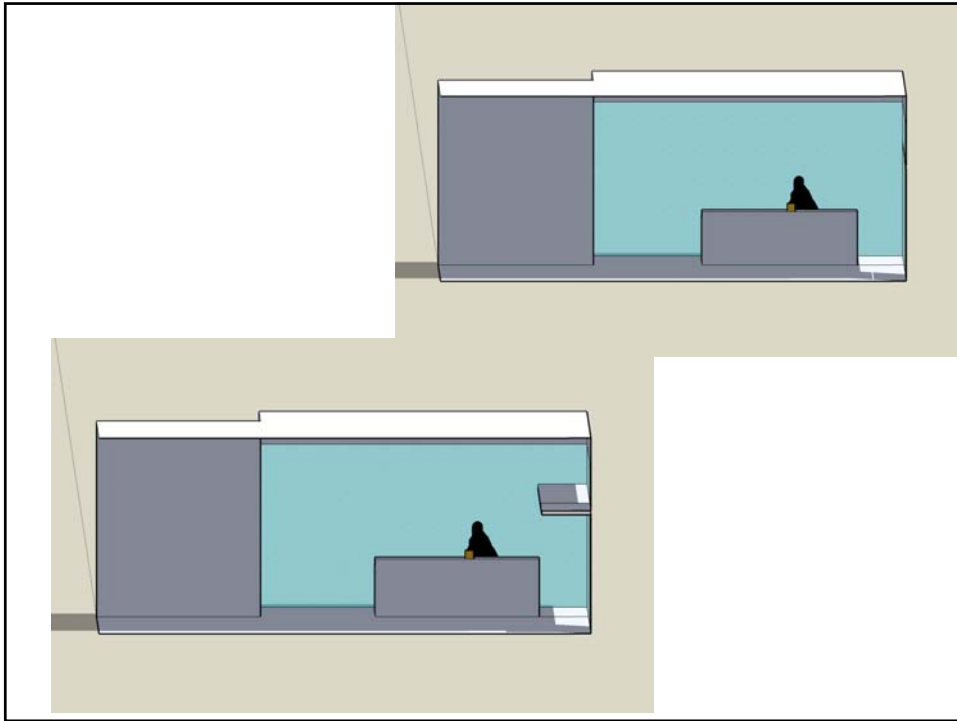


Data Collection Points



Office with added lightshelves





Difference between base case and added lightshelves

