

The Moscow Greenbelt Parkway: A Vision for Moscow's Future

prepared for a joint meeting of the
**Moscow City Council, Parks and Recreation
Commission, and Paradise Path Task Force**

by

Steve Hollenhorst
stevenh@uidaho.edu

Sylvia Ferrin
ferrinsa@verizon.net

June 14, 2005







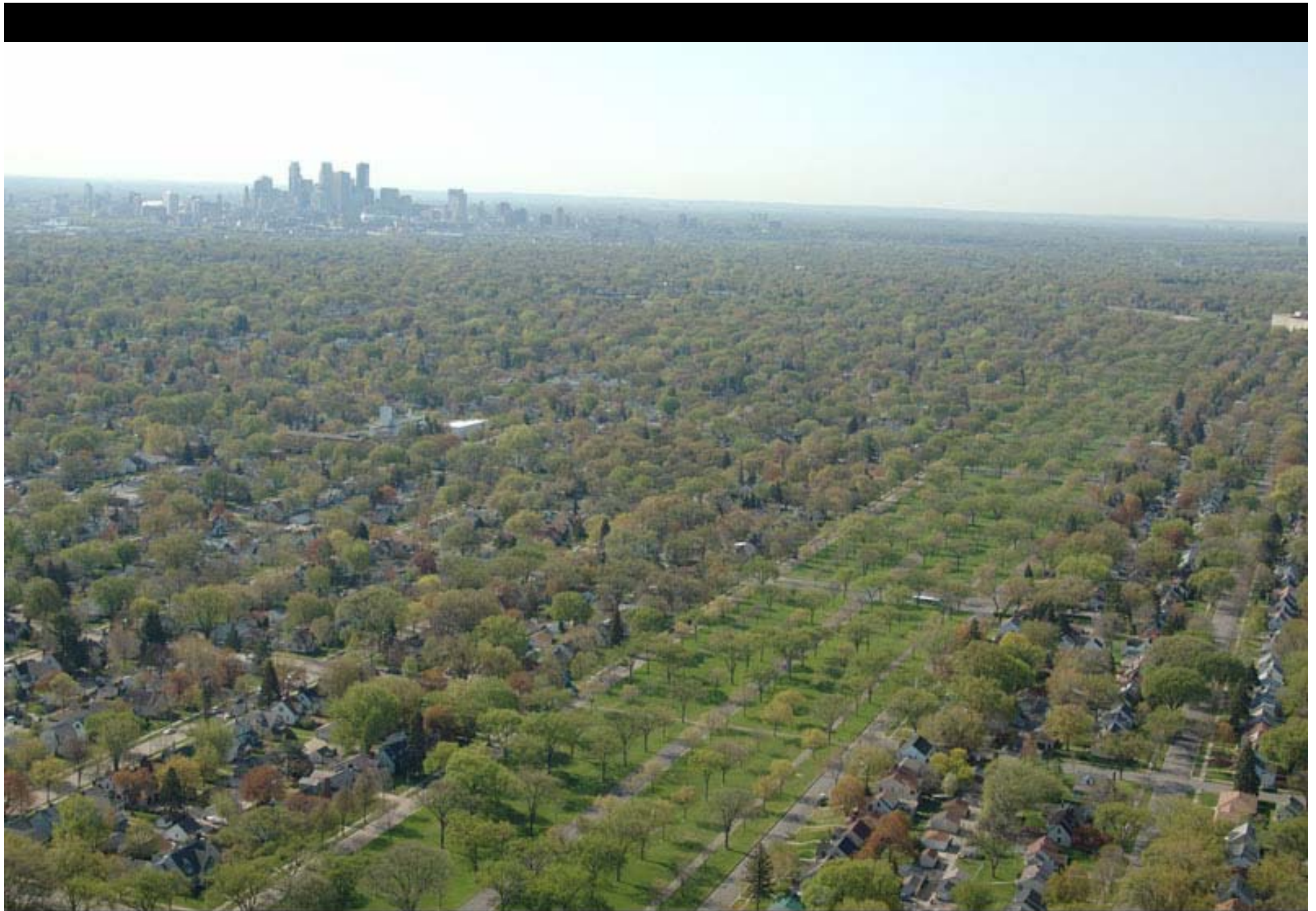


Image from the Metropolitan Design Center Image Bank.
© Regents of the University of Minnesota. All rights reserved. Used with permission.

The Moscow Greenbelt Parkway (MGP)

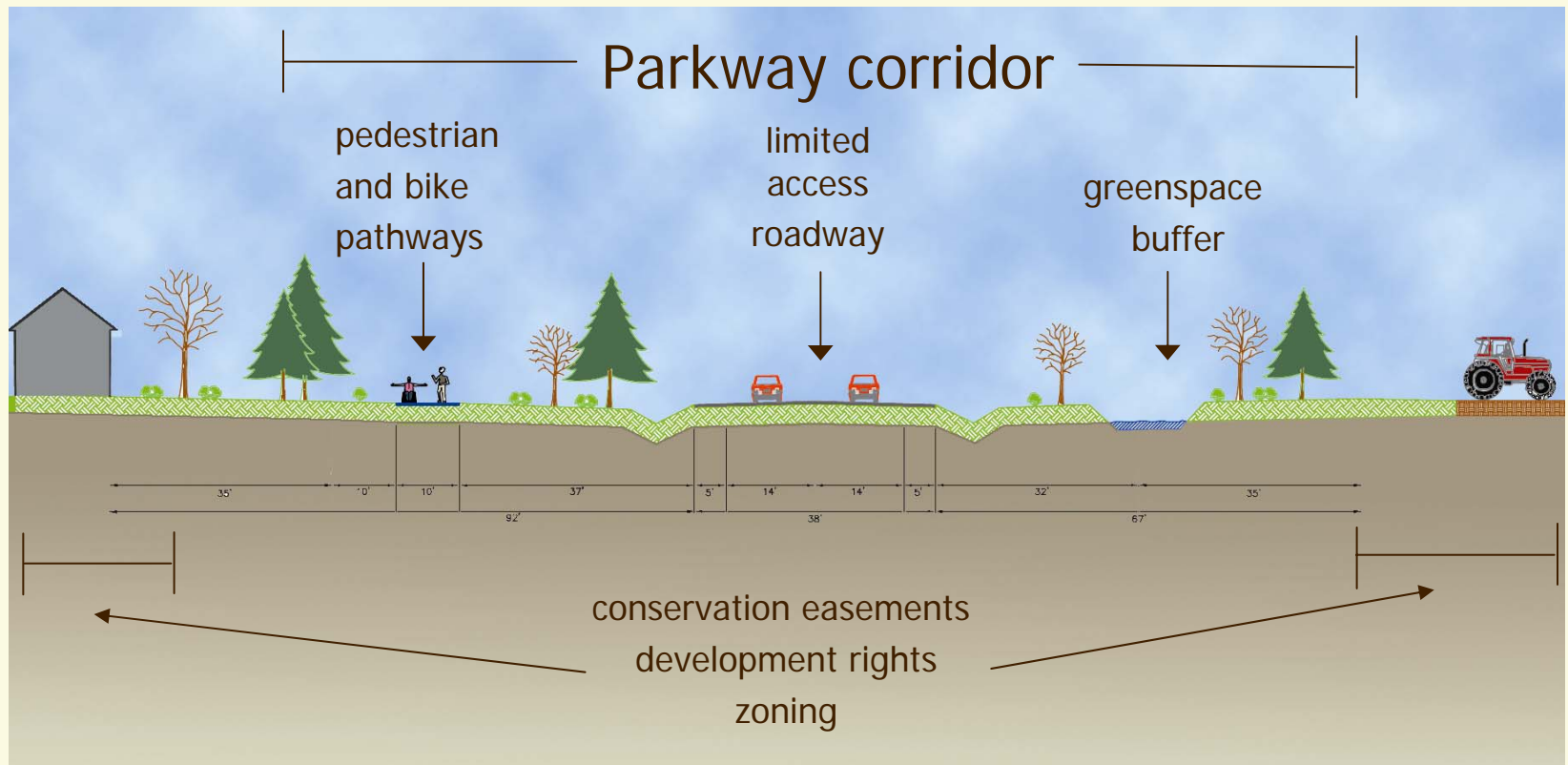
A thin ribbon of land encircling the community that serves multiple purposes:

- Transportation and utility artery connecting communities and commercial areas.
- Bicycle and pedestrian pathways.
- Linear greenspace connecting existing and future parks and public spaces.
- Protection of aesthetic qualities.
- Represents rural traditions and protects rural land uses of the Palouse.
- Provides opportunities for active and healthy lifestyles.

Elements of the MGP

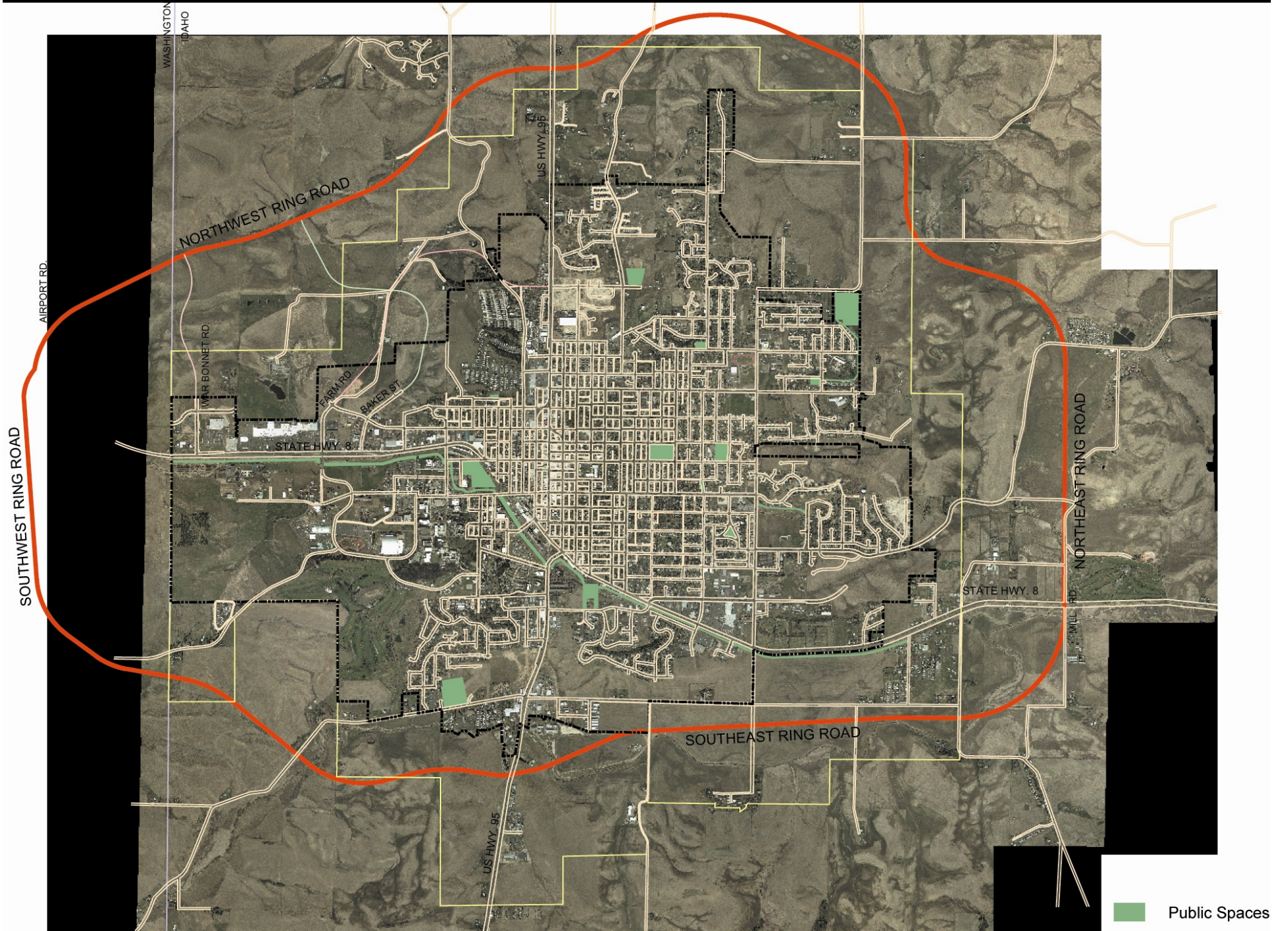
- ✓ ***Parkway corridor*** along existing rural roadways, sufficiently wide to support a ***limited access road, pedestrian and bike pathways***, and ***greenspace buffer***.
- ✓ ***Conservation easements*** and ***development rights*** acquired for key parcels to encourage compatible land use and discourage strip development.
- ✓ Generally, adjacent lands would remain ***zoned as rural farm and forest land***, or ***residential*** where desired.
- ✓ ***Strip development discouraged*** in favor of routing traffic to ***support existing and planned commercial areas and businesses***.

Elements of the MGP



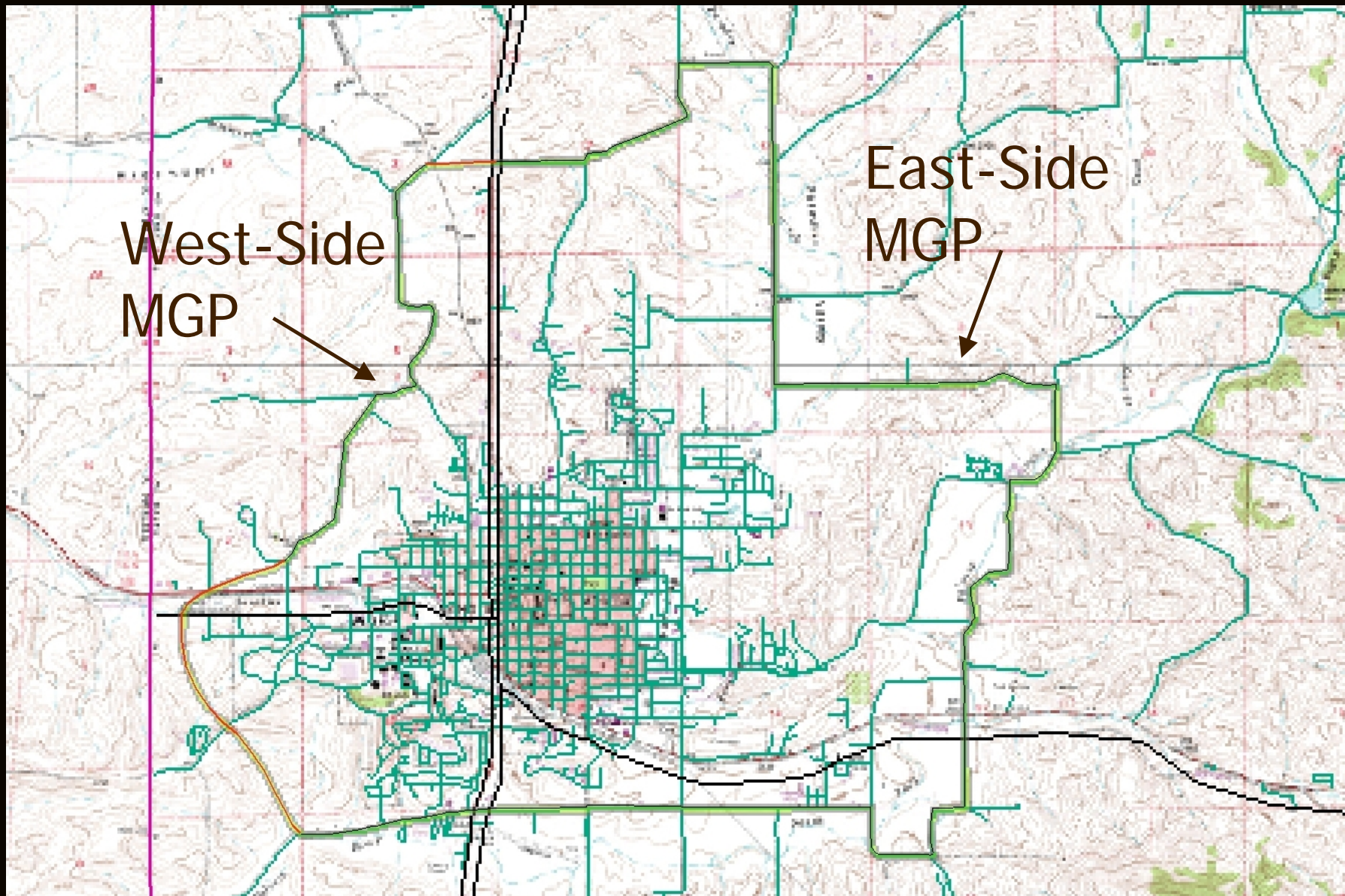
What makes the MGP different?

- ✓ **Green:** At its most basic level, the MGP must be greener than other roadways.
- ✓ **Public Place:** The MGP is a space shared by a broad community, not just the automobile.
- ✓ **Connections:** The MGP connects significant cultural and natural amenities, linked together to create a system.



West-Side
MGP

East-Side
MGP

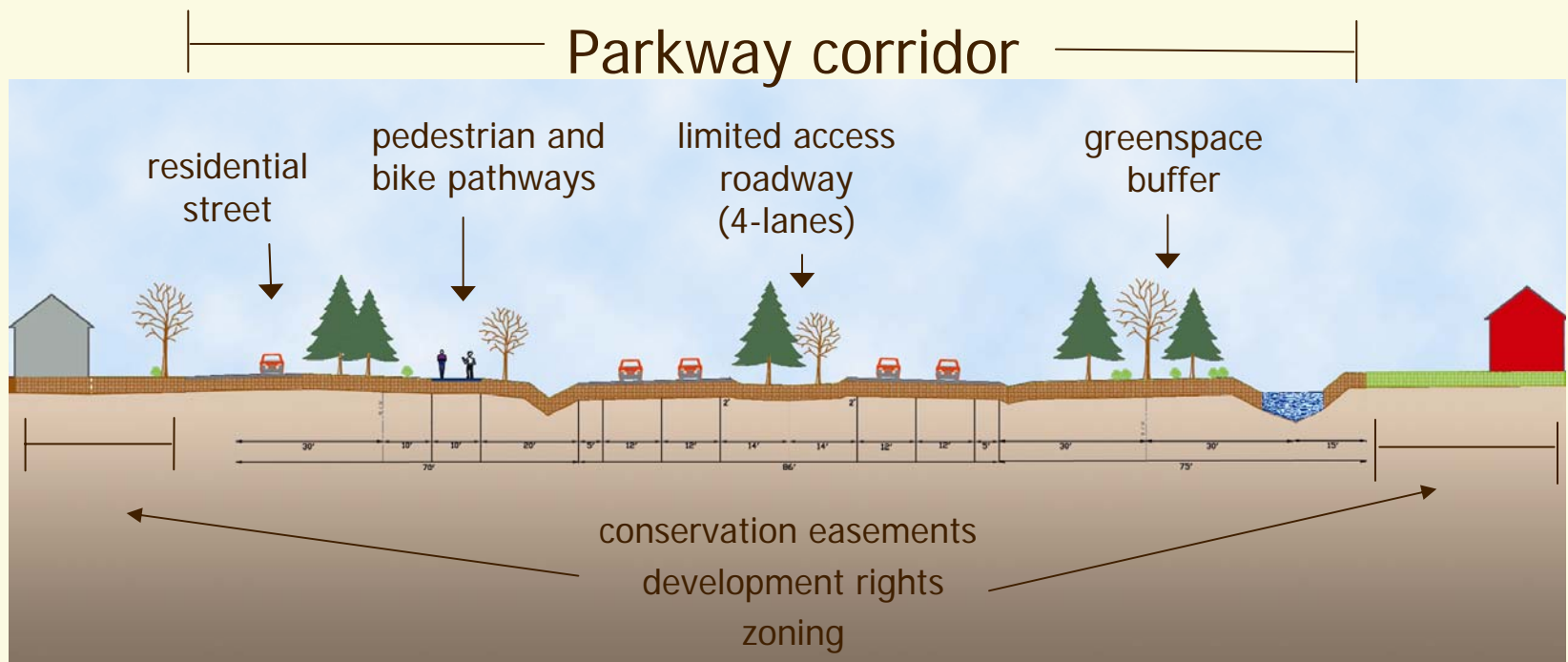


Different Needs, Different Design

West Side MGP

- ✓ Integrated into highway network.
- ✓ Emphasis on an automobile bypass.
- ✓ 4-lane higher speed (not high speed) limited access road with landscaped median.
- ✓ Pathways and adjacent greenspace buffers.
- ✓ Key to success: appropriate zoning and acquisition of easements and development rights.

MGP West Side - Profile

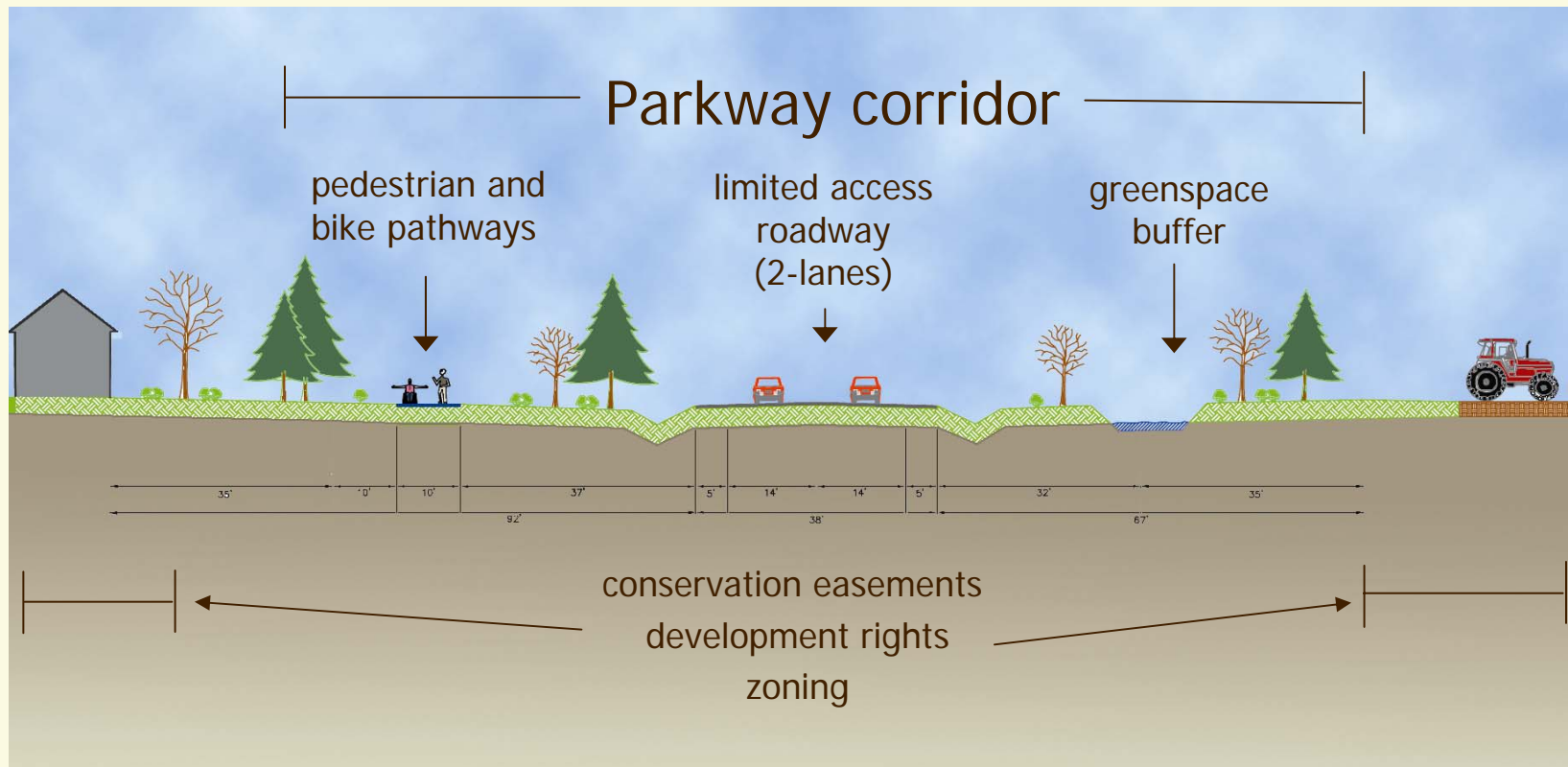


Different Needs, Different Design

East Side MGP

- ✓ Largely disconnected from the highway system.
- ✓ Alternative travel routes through green areas.
- ✓ Lower-speed two-lane limited access road with frequent parking pullouts and wide greenspace buffer.
- ✓ Natural features, recreational amenities and institutions tightly integrated with the corridor, including features such as the schools, South Fork of the Palouse River, Paradise Creek, Mountainview and Clyde Parks, the Elks Golf Course, the UI Horticultural Research Farm.

MGP East Side - Profile



Minneapolis Parkway System: A Model





Image from the Metropolitan Design Center Image Bank.
© Regents of the University of Minnesota. All rights reserved. Used with permission.



Image from the Metropolitan Design Center Image Bank.
© Regents of the University of Minnesota. All rights reserved. Used with permission.



Image from the Metropolitan Design Center Image Bank.
© Regents of the University of Minnesota. All rights reserved. Used with permission.

Please remember to use the credit line above.



Image from the Metropolitan Design Center Image Bank.
© Regents of the University of Minnesota. All rights reserved. Used with permission.



Image from the Metropolitan Design Center Image Bank.
© Regents of the University of Minnesota. All rights reserved. Used with permission.

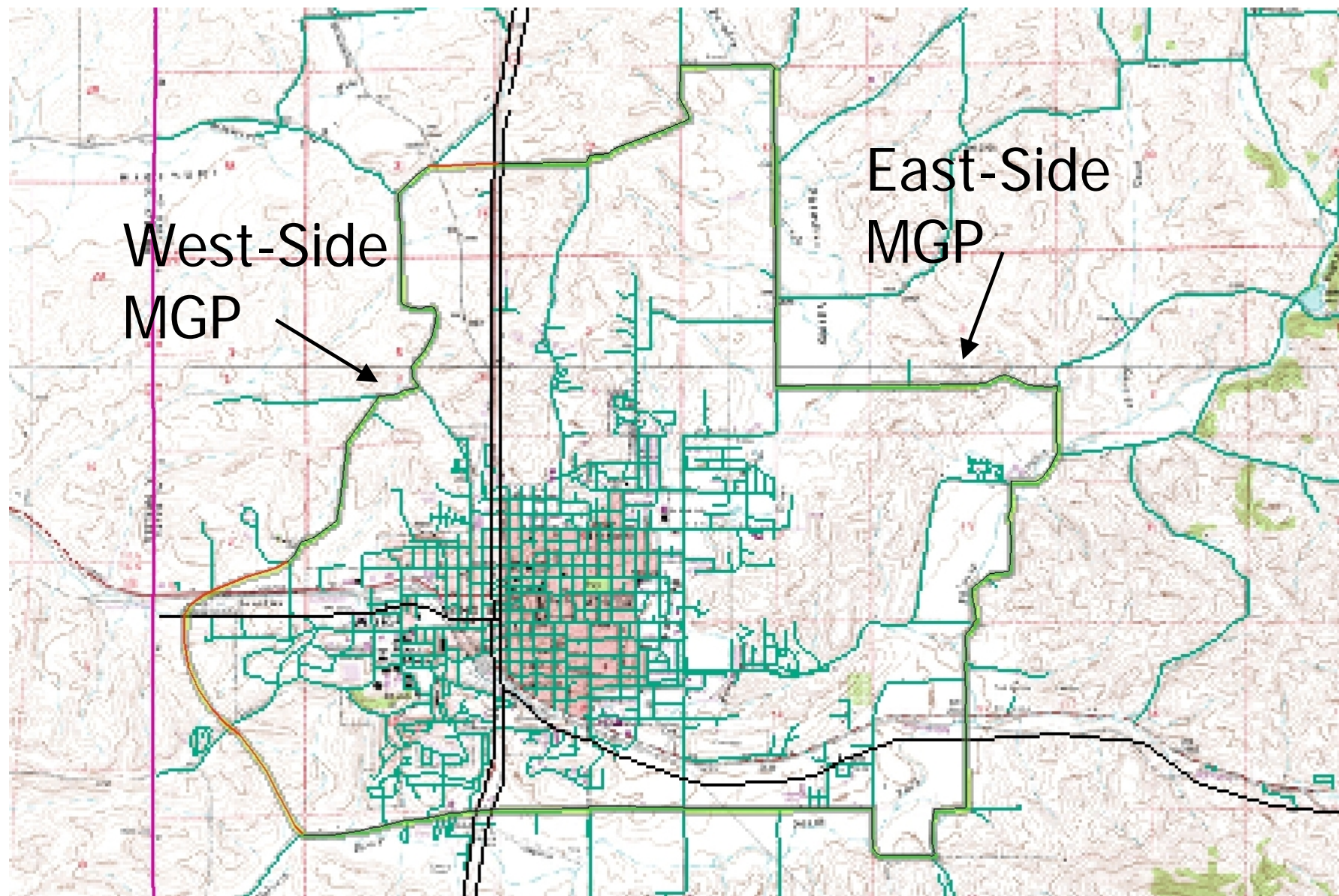


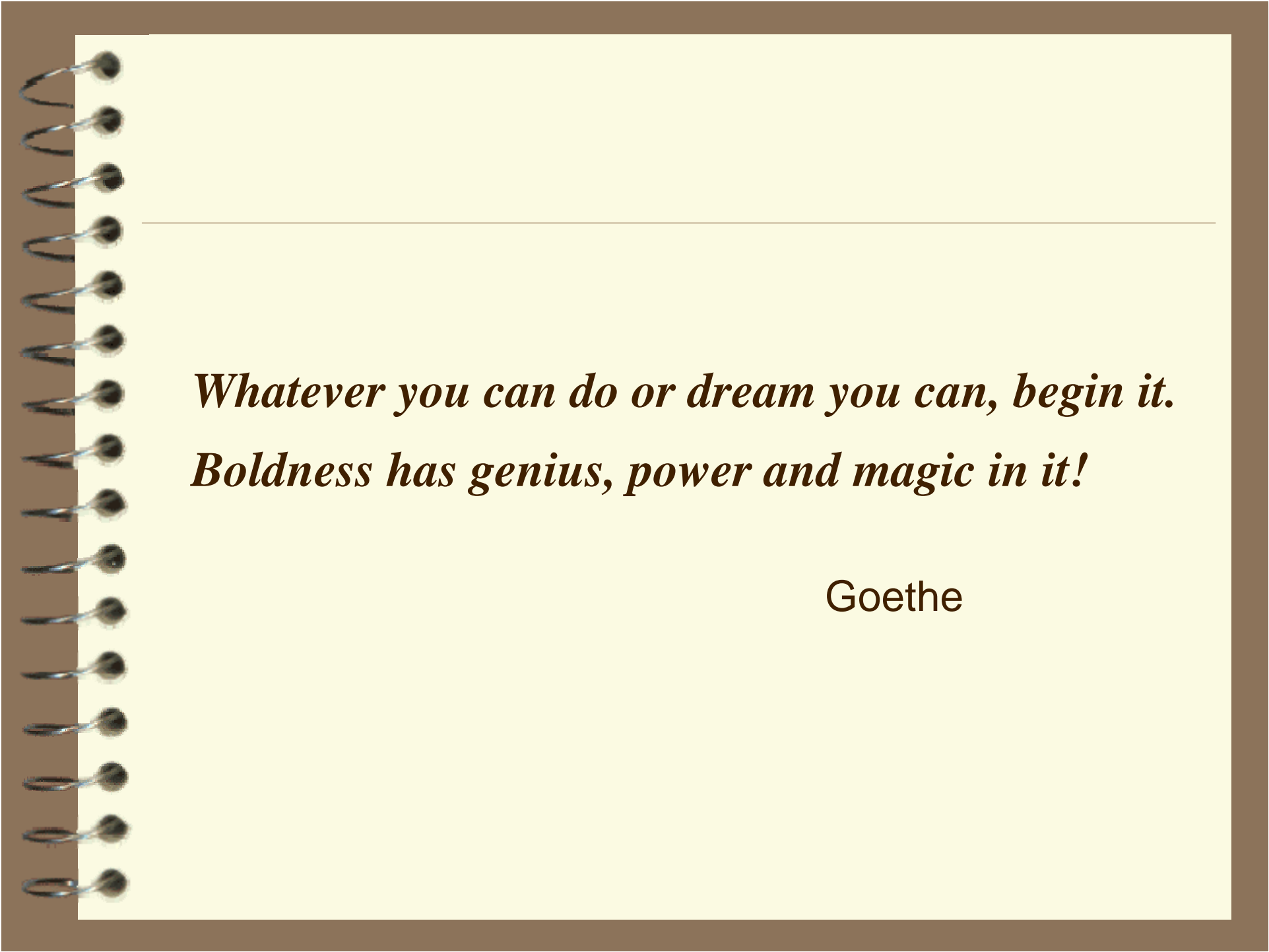


Image from the Metropolitan Design Center Image Bank.
© Regents of the University of Minnesota. All rights reserved. Used with permission.

Please remember to use the credit line above.





A graphic of a spiral-bound notebook with a brown cover and a cream-colored page. The spiral binding is on the left side. A thin horizontal line is drawn across the page, just above the text.

*Whatever you can do or dream you can, begin it.
Boldness has genius, power and magic in it!*

Goethe