

Table 1^a. Snowshoe hare sex ratios (SR)^b, density estimates, and 95% confidence intervals under 3 treatment types derived from line transect sampling in northern Idaho, USA, 2006-2009.

Treatment type ^{d,e}	Year ^f	SR (M:F) ^{b,f}	Estimated density (no./100 km ²) ^{b,f}	95% CI ^c	
				Lower ^f	Upper ^f
Control ^g	2008	4.34	10729	10329	11130
	2009	3.20	10731	10407	11054
Mowed ^g	2006	3.97	10735	10419	11052
	2007	1.01	10738	10224	11252
	2008	2.12	10776	10553	10999
	2009	2.77	10816	10636	10996
Fertilized ^g	2007	6.56	11045	10578	11512
	2008	3.89	11319	11021	11618
	2009	2.24	12187	11685	12688

^aTitle is located above table. It should include enough information for table to stand alone (e.g., data description, species, location, date, etc.) and should not contain superfluous words. Entire table should be double-spaced.

^bDefine most acronyms (see below) and all units used in table.

^cStandardized acronyms should not be defined. See journal guidelines.

^dColumn headings should be descriptive. Capitalize only the first word and do not use bold text.

^eText columns should be left justified.

^fNumeric columns should be centered with decimals aligned. All numeric values in a column should have the same number of significant digits. Use a reasonable number of significant digits.

^gDo not unnecessarily repeat data between rows.

*There should be ≥ 3 horizontal lines in each table, as above, but there should be no lines in the body of the table.

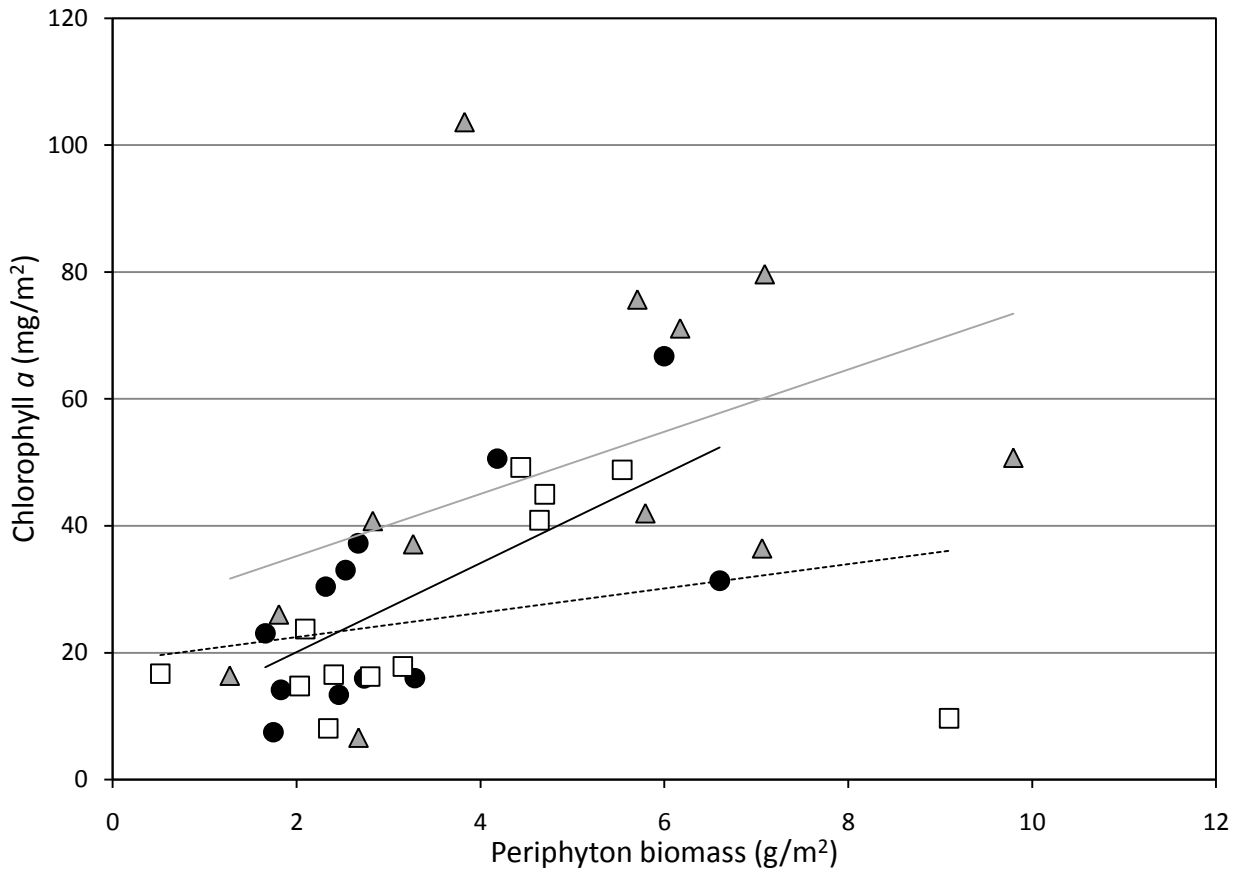


Figure 1. Mean chlorophyll *a* relative to mean biomass (ash-free dry weight) for periphyton samples collected seasonally from artificial substrates (submerged for 28-30 days) at sampling stations in the lower Snake River reservoirs, Washington, USA. Fall samples (black circles, black trend line) were collected during October-November 2008, winter samples (white squares, dashed trend line) were collected during January-February 2009, and spring samples (gray triangles, gray trend line) were collected during March-May 2009.

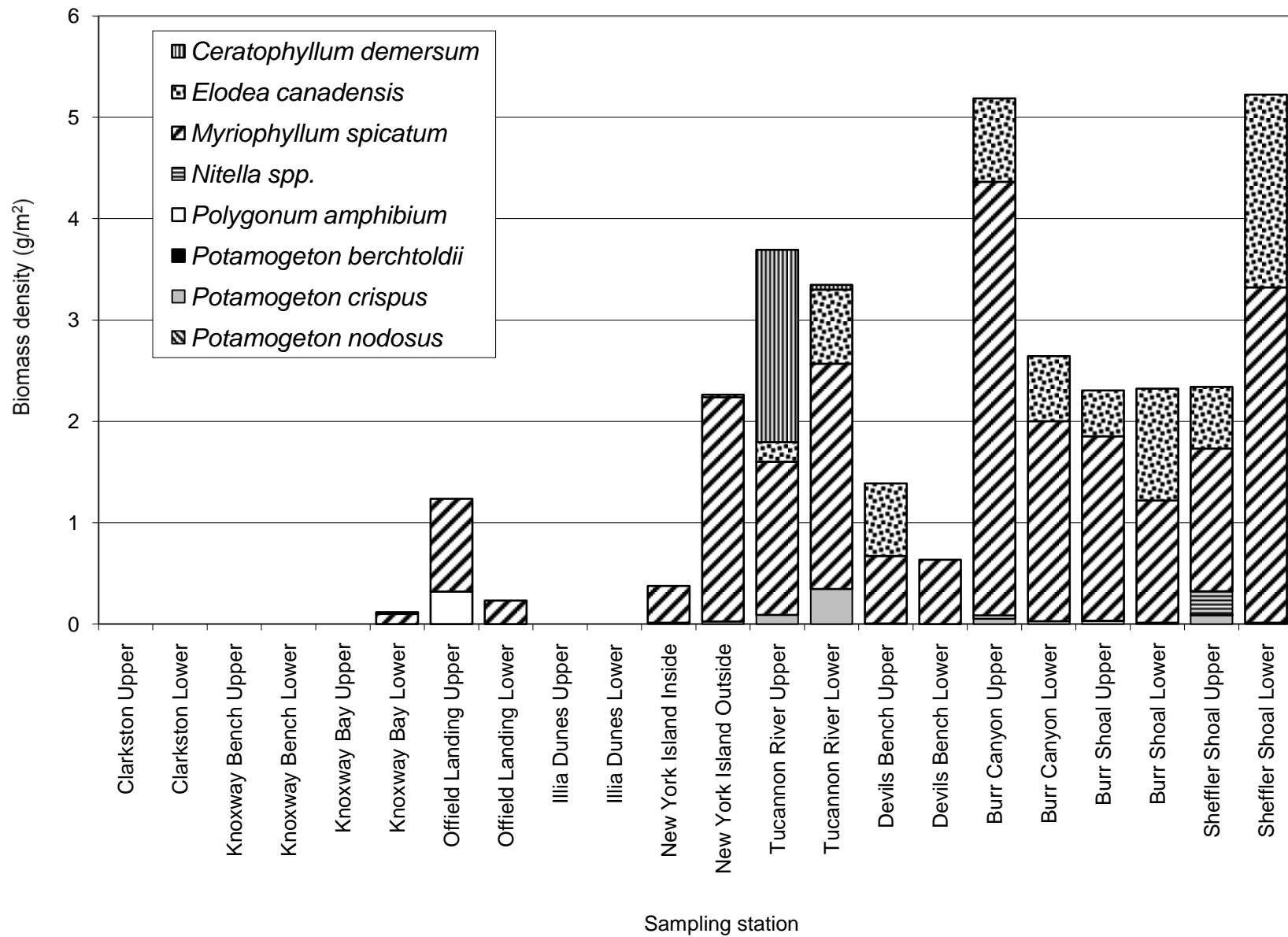


Figure 2. Total submerged aquatic macrophyte biomass (dry weight) at sampling stations in the lower Snake River, Washington, USA, October-December 2008.

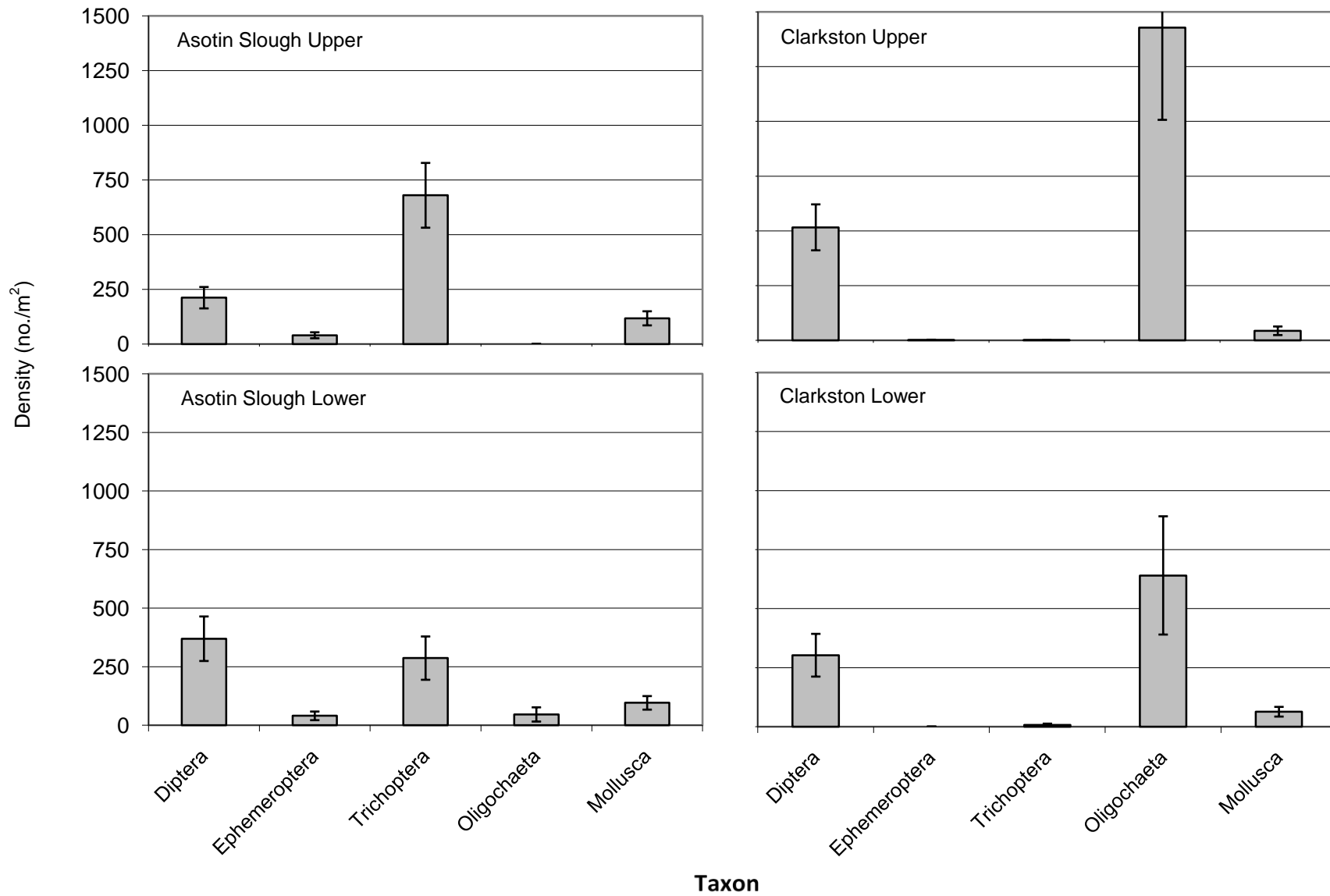


Figure 3. Mean benthic macroinvertebrate densities with one standard error for selected taxa collected from dredge samples at sampling stations in the lower Snake River, Washington, October-November 2008.

Figure Guidelines:

- 1) Caption (title) is located below the figure. It should include enough information for figure to stand alone (e.g., data description, species, location, date, etc.) and should not contain superfluous words. Caption often will contain information necessary for interpretation of the figure and, therefore, may be lengthy. Text should be double-spaced.
- 2) Figures should be free of unnecessary clutter and contain all material required for interpretation in them. Avoid bold text whenever possible. Avoid use of color whenever possible.
- 3) Label all axes. Include units of measure where necessary. Multiple figures on the same page should use common axis labels.
- 4) Include a legend when necessary and always include a north arrow and scale on maps.
- 5) Avoid the use of footnotes on figures.
- 6) Capitalize only the first word of text strings, except with titles and place names.
- 7) Define all acronyms, except those that have been standardized. See journal guidelines.
- 8) Axes may encompass all 4 sides of a graph, but do not include a box around the entire figure.