

Obs	model	vol	hp	mpg	sp	wt	lmpg	lowvol	hihp
1	GM/GeoMetroXF1	89	49	65.4	96	17.5	4.18052	0	0
2	GM/GeoMetro	92	55	56.0	97	20.0	4.02535	0	0
3	GM/GeoMetroLSI	92	55	55.9	97	20.0	4.02356	0	0
4	SuzukiSwift	92	70	49.0	105	20.0	3.89182	0	0
5	DaihatsuCharade	92	53	46.5	96	20.0	3.83945	0	0
6	GM/GeoSprintTurbo	89	70	46.2	105	20.0	3.83298	0	0
7	GM/GeoSprint	92	55	45.4	97	20.0	3.81551	0	0
8	HondaCivicCRXHF	50	62	59.2	98	22.5	4.08092	1	0
9	HondaCivicCRXHF	50	62	53.3	98	22.5	3.97594	1	0
10	DaihatsuCharade	94	80	43.4	107	22.5	3.77046	0	0
11	SubaruJusty	89	73	41.1	103	22.5	3.71601	0	0
12	HondaCivicCRX	50	92	40.9	113	22.5	3.71113	1	0
13	HondaCivic	99	92	40.9	113	22.5	3.71113	0	0
14	SubaruJusty	89	73	40.4	103	22.5	3.69883	0	0
15	SubaruJusty	89	66	39.6	100	22.5	3.67883	0	0
16	SubaruJusty4wd	89	73	39.3	103	22.5	3.67122	0	0
17	ToyotaTercel	91	78	38.9	106	22.5	3.66099	0	0
18	HondaCivicCRX	50	92	38.8	113	22.5	3.65842	1	0
19	ToyotaTercel	91	78	38.2	106	22.5	3.64284	0	0
20	FordEscort	103	90	42.2	109	25.0	3.74242	0	0

The REG Procedure
 Model: MODEL1
 Dependent Variable: Impg

Number of Observations Read	82
Number of Observations Used	82

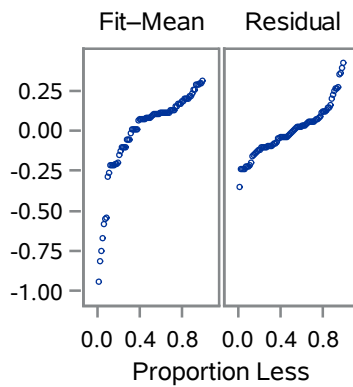
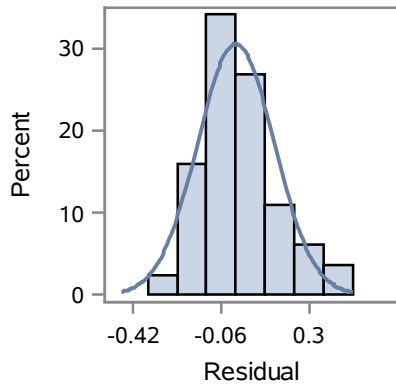
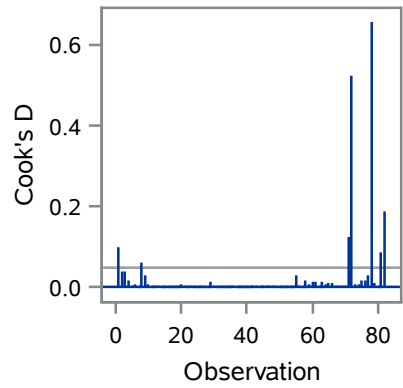
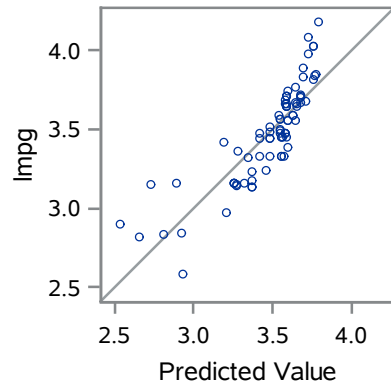
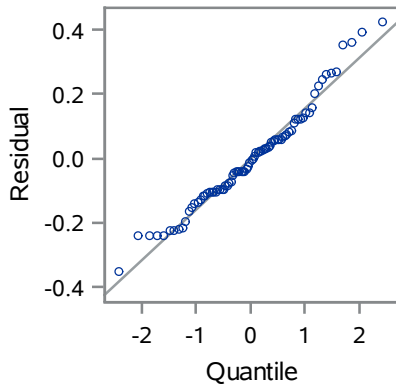
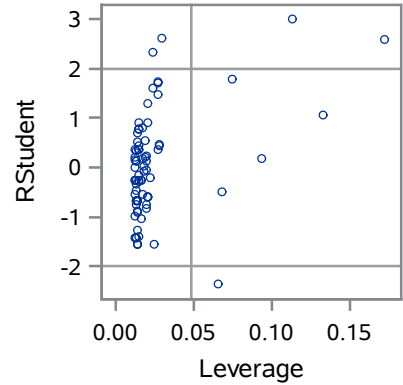
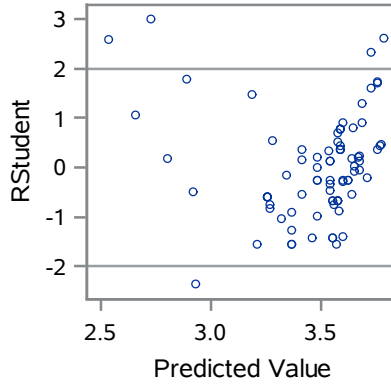
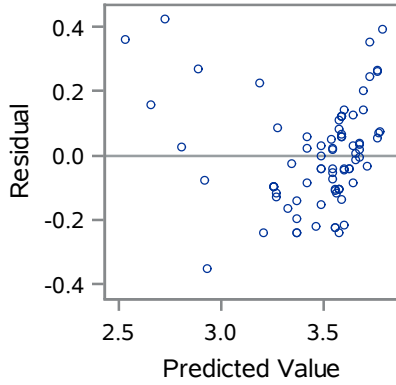
Analysis of Variance					
Source	DF	Sum of Squares	Mean Square	F Value	Pr > F
Model	1	5.51090	5.51090	221.21	<.0001
Error	80	1.99300	0.02491		
Corrected Total	81	7.50390			

Root MSE	0.15784	R-Square	0.7344
Dependent Mean	3.47571	Adj R-Sq	0.7311
Coeff Var	4.54114		

Parameter Estimates					
Variable	DF	Parameter Estimate	Standard Error	t Value	Pr > t
Intercept	1	4.01323	0.04012	100.02	<.0001
hp	1	-0.00459	0.00030854	-14.87	<.0001

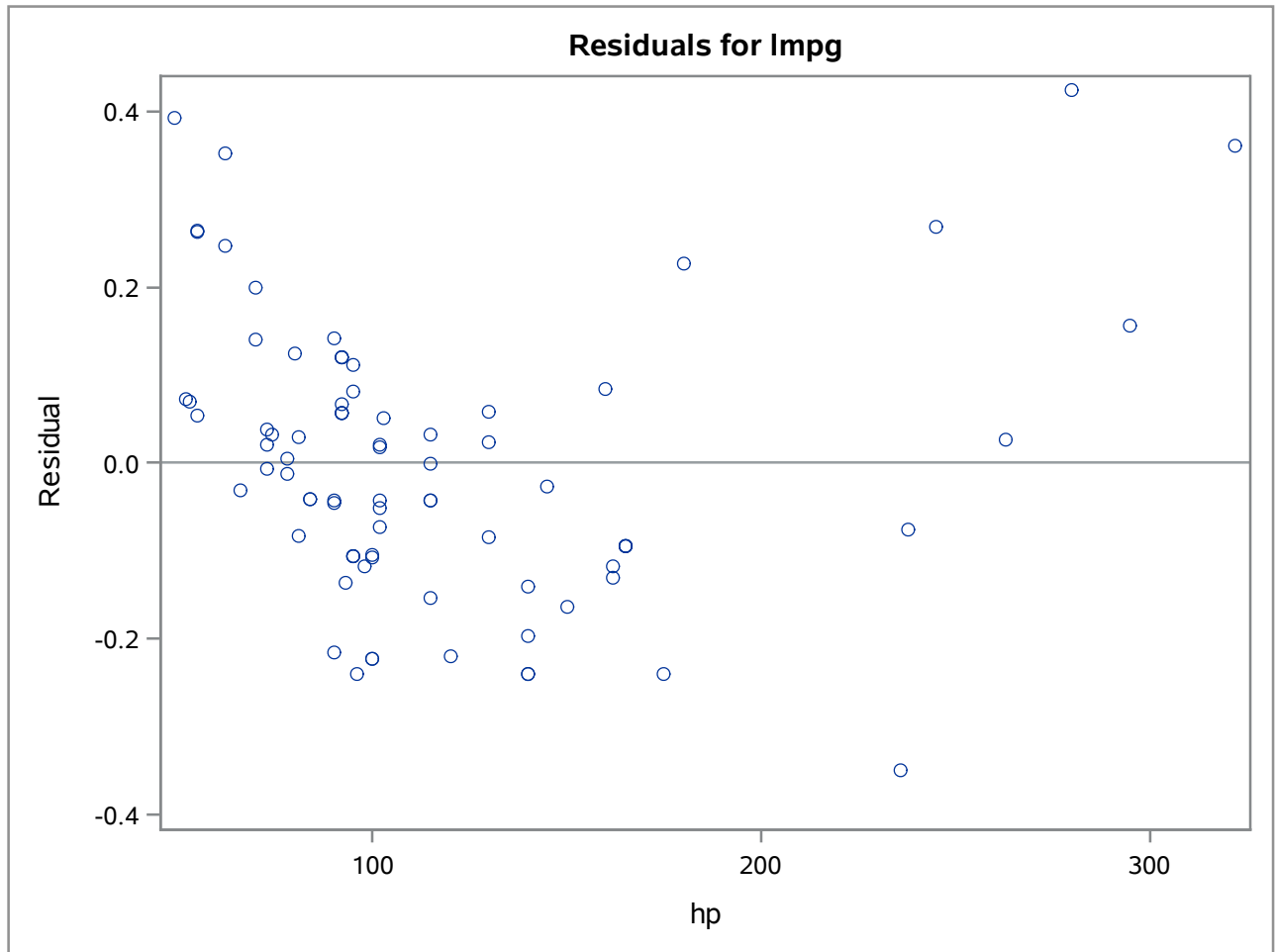
The REG Procedure
 Model: MODEL1
 Dependent Variable: Impg

Fit Diagnostics for Impg

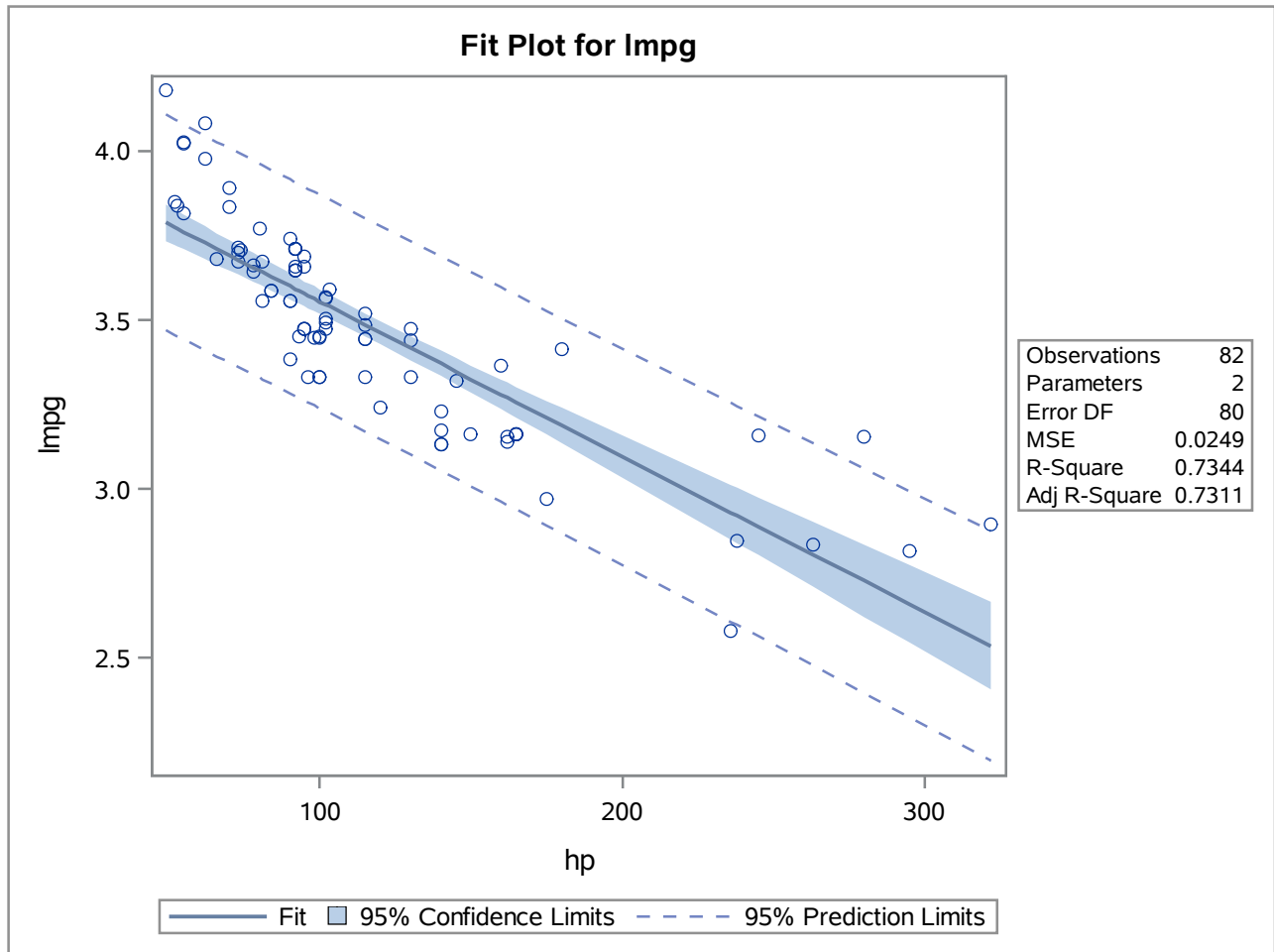


Observations	82
Parameters	2
Error DF	80
MSE	0.0249
R-Square	0.7344
Adj R-Square	0.7311

The REG Procedure
Model: MODEL1
Dependent Variable: Impg



The REG Procedure
Model: MODEL1
Dependent Variable: Impg



The REG Procedure
 Model: MODEL2
 Dependent Variable: Impg

Number of Observations Read	82
Number of Observations Used	82

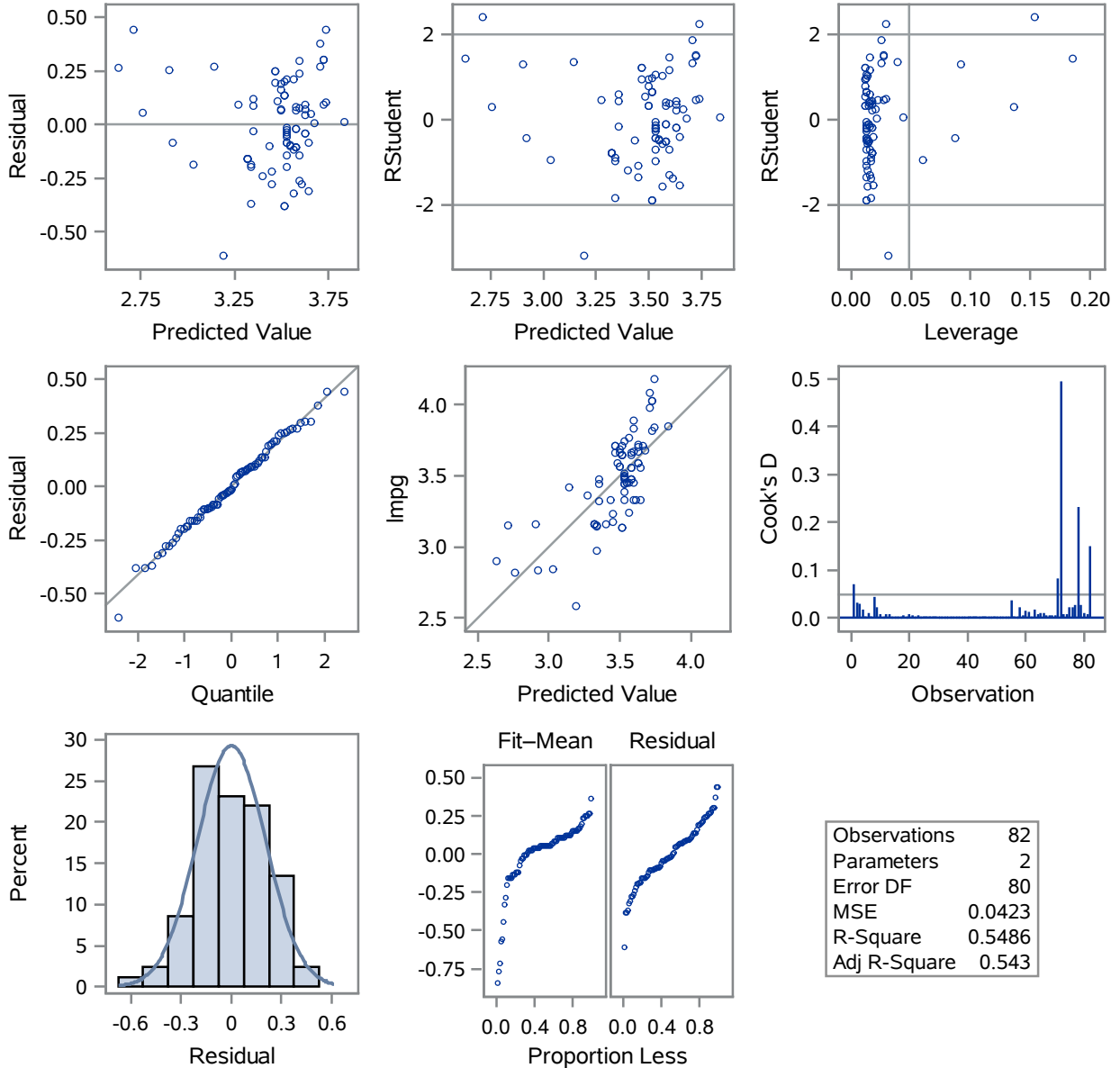
Analysis of Variance					
Source	DF	Sum of Squares	Mean Square	F Value	Pr > F
Model	1	4.11699	4.11699	97.24	<.0001
Error	80	3.38691	0.04234		
Corrected Total	81	7.50390			

Root MSE	0.20576	R-Square	0.5486
Dependent Mean	3.47571	Adj R-Sq	0.5430
Coeff Var	5.91988		

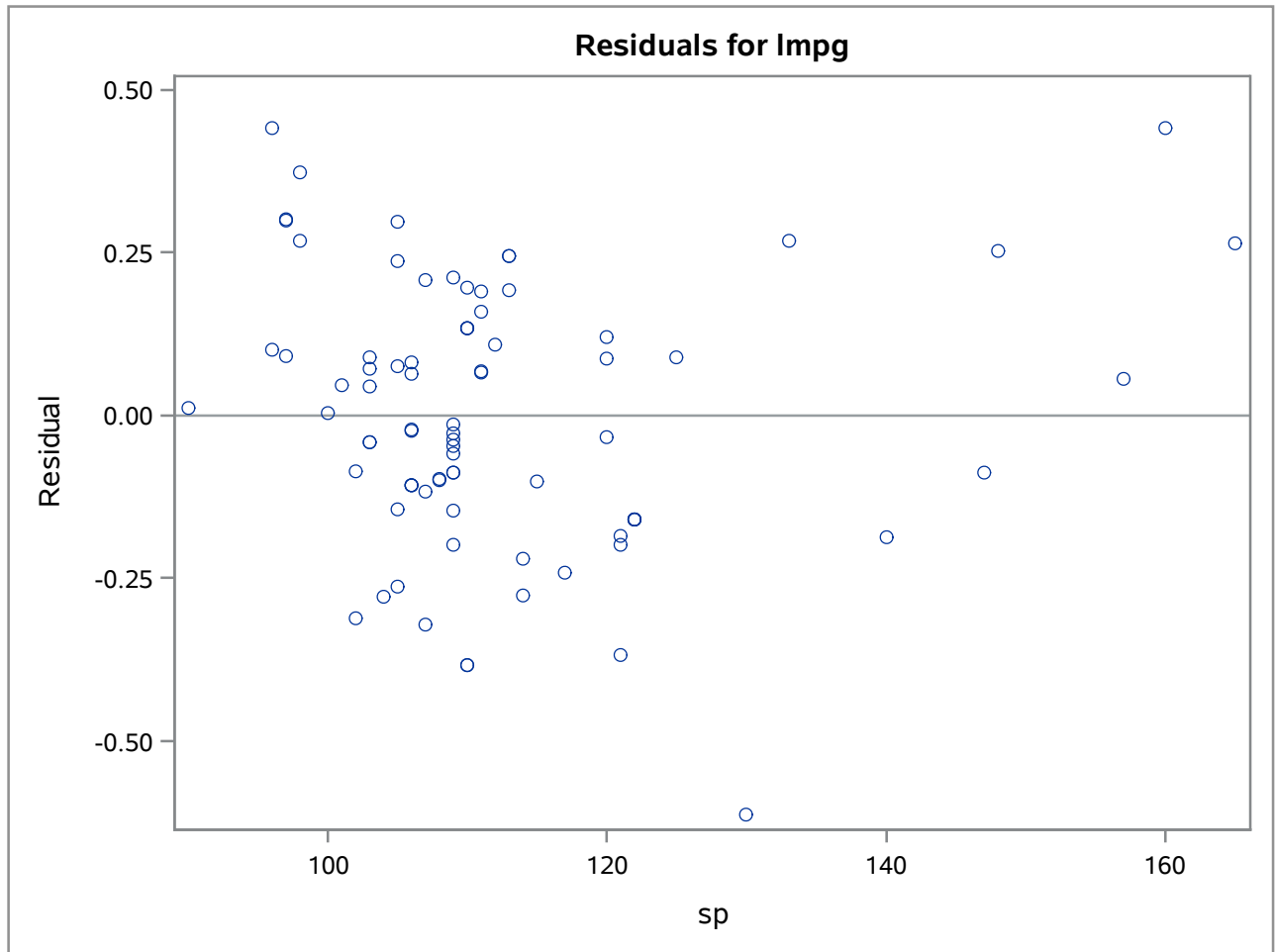
Parameter Estimates					
Variable	DF	Parameter Estimate	Standard Error	t Value	Pr > t
Intercept	1	5.28110	0.18448	28.63	<.0001
sp	1	-0.01606	0.00163	-9.86	<.0001

The REG Procedure
 Model: MODEL2
 Dependent Variable: Impg

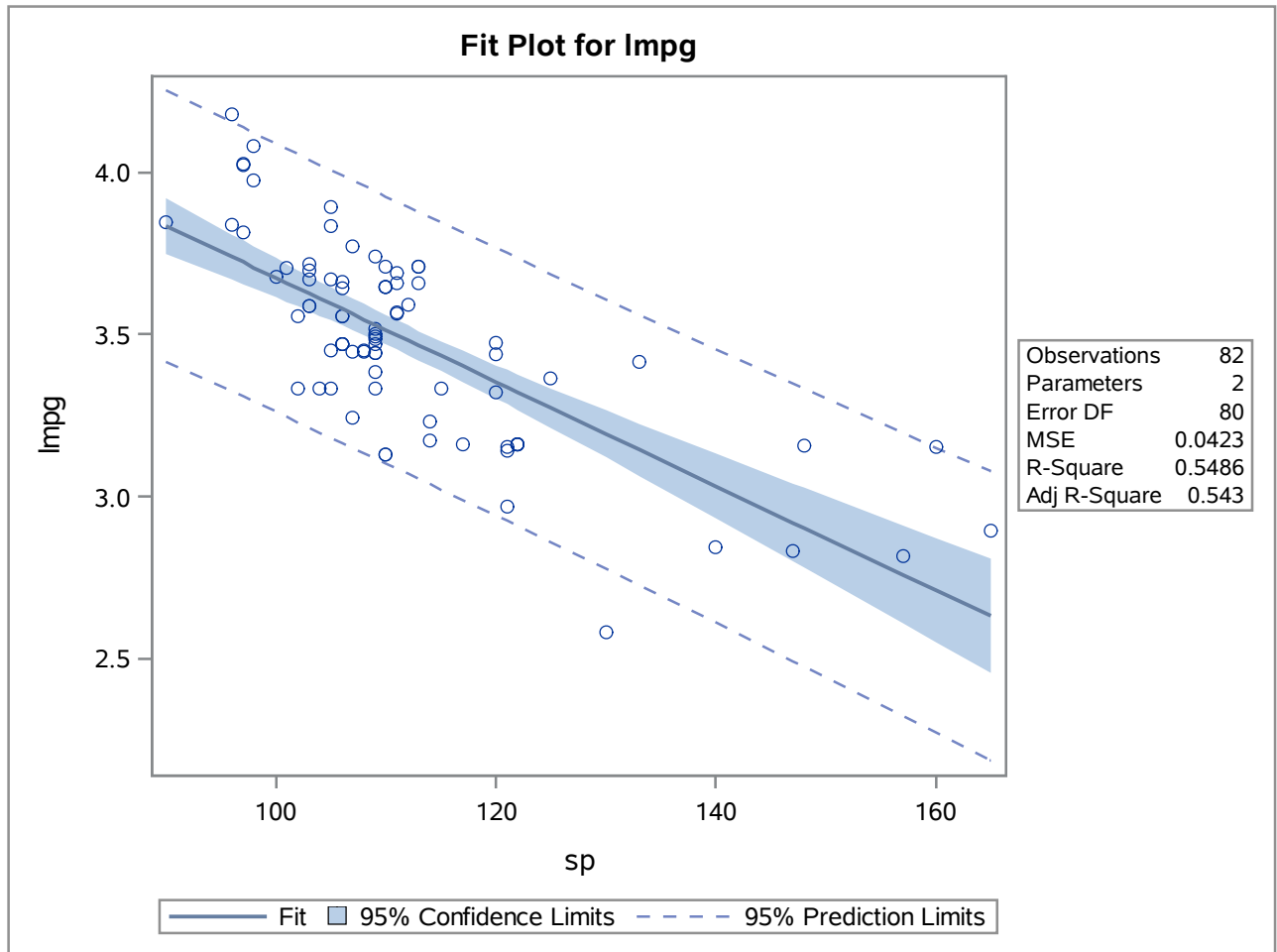
Fit Diagnostics for Impg



The REG Procedure
Model: MODEL2
Dependent Variable: Impg



The REG Procedure
Model: MODEL2
Dependent Variable: Impg



The REG Procedure
 Model: MODEL3
 Dependent Variable: Impg

Number of Observations Read	82
Number of Observations Used	82

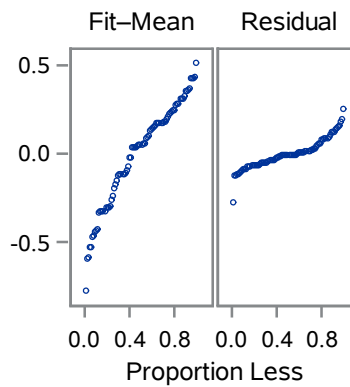
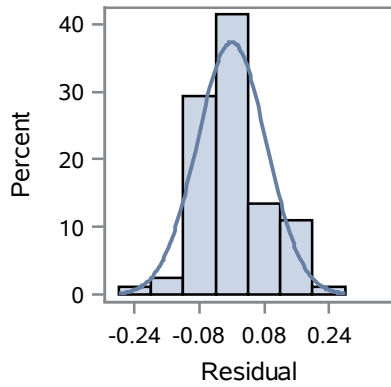
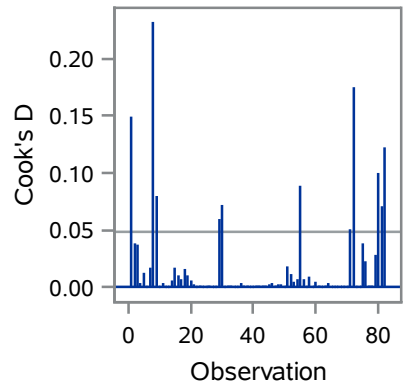
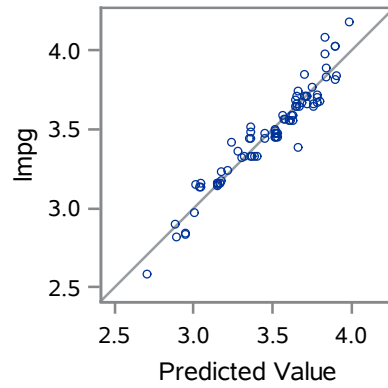
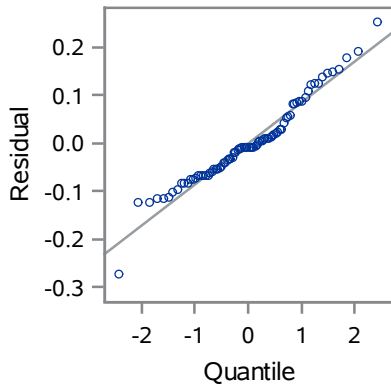
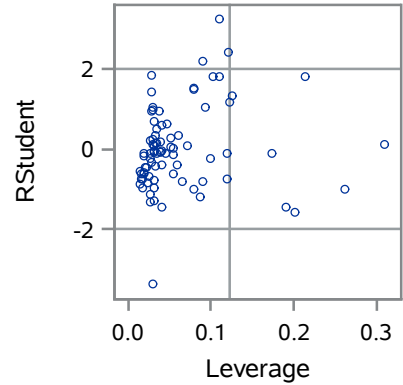
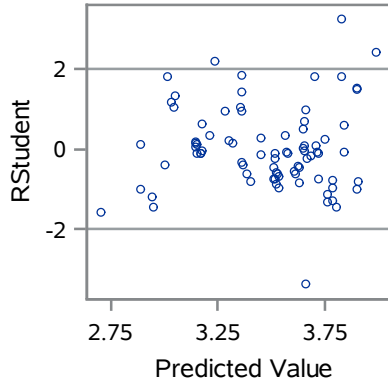
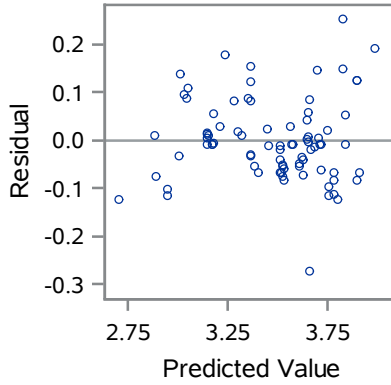
Analysis of Variance					
Source	DF	Sum of Squares	Mean Square	F Value	Pr > F
Model	4	6.91210	1.72803	224.83	<.0001
Error	77	0.59180	0.00769		
Corrected Total	81	7.50390			

Root MSE	0.08767	R-Square	0.9211
Dependent Mean	3.47571	Adj R-Sq	0.9170
Coeff Var	2.52232		

Parameter Estimates						
Variable	DF	Parameter Estimate	Standard Error	t Value	Pr > t	Variance Inflation
Intercept	1	5.77252	0.56477	10.22	<.0001	0
vol	1	-0.00030881	0.00054782	-0.56	0.5746	1.55404
hp	1	0.00295	0.00195	1.51	0.1355	130.00077
sp	1	-0.01305	0.00587	-2.22	0.0292	71.67578
wt	1	-0.03701	0.00512	-7.23	<.0001	18.31820

The REG Procedure
 Model: MODEL3
 Dependent Variable: Impg

Fit Diagnostics for Impg



Observations	82
Parameters	5
Error DF	77
MSE	0.0077
R-Square	0.9211
Adj R-Square	0.917

The REG Procedure
Model: MODEL3
Dependent Variable: Impg



The CORR Procedure

4 Variables:	vol	hp	sp	wt
---------------------	-----	----	----	----

Simple Statistics						
Variable	N	Mean	Std Dev	Sum	Minimum	Maximum
vol	82	98.80488	22.16628	8102	50.00000	160.00000
hp	82	117.13415	56.84086	9605	49.00000	322.00000
sp	82	112.41463	14.03782	9218	90.00000	165.00000
wt	82	30.91463	8.14142	2535	17.50000	55.00000

Pearson Correlation Coefficients, N = 82 Prob > r under H0: Rho=0				
	vol	hp	sp	wt
vol	1.00000	0.07648 0.4947	-0.04306 0.7009	0.38495 0.0004
hp	0.07648 0.4947	1.00000	0.96655 <.0001	0.83222 <.0001
sp	-0.04306 0.7009	0.96655 <.0001	1.00000	0.67853 <.0001
wt	0.38495 0.0004	0.83222 <.0001	0.67853 <.0001	1.00000

The REG Procedure
 Model: MODEL1
 Dependent Variable: Impg

Number of Observations Read	82
Number of Observations Used	82

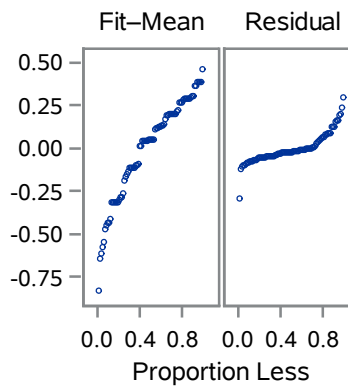
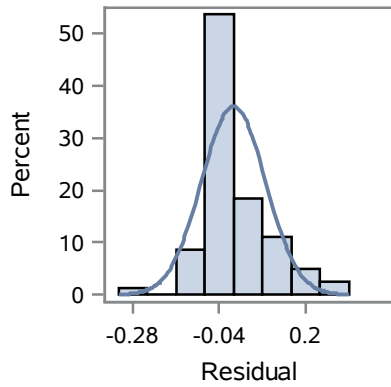
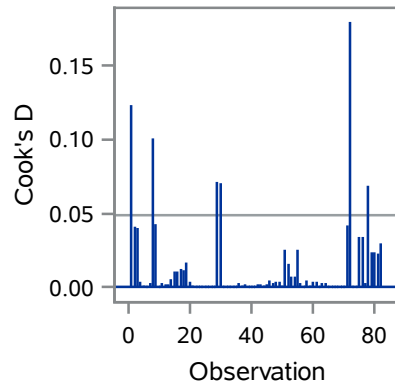
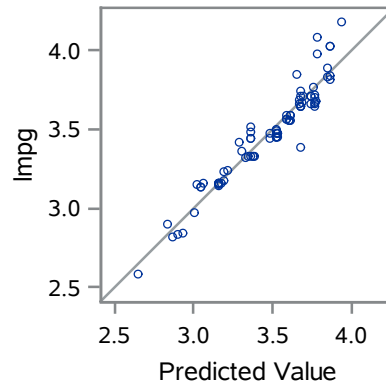
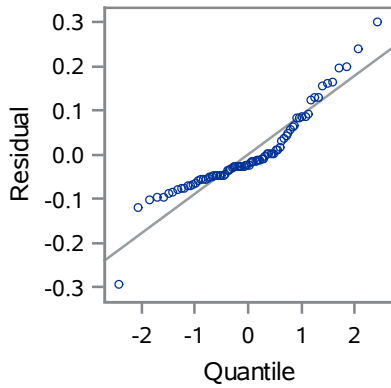
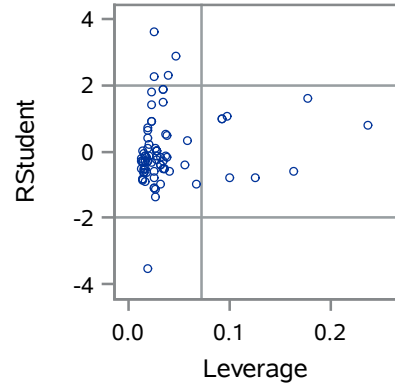
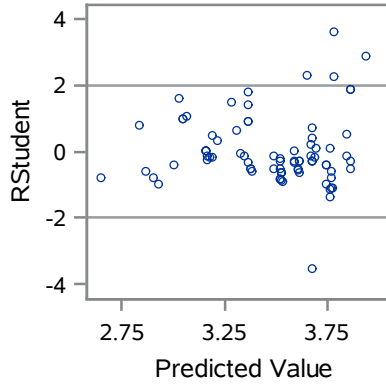
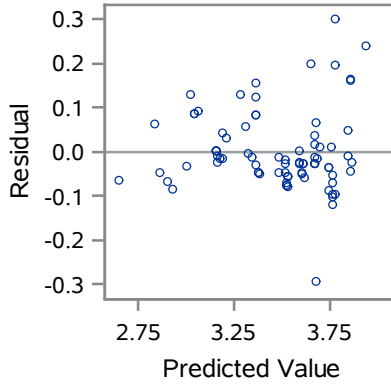
Analysis of Variance					
Source	DF	Sum of Squares	Mean Square	F Value	Pr > F
Model	2	6.86782	3.43391	426.48	<.0001
Error	79	0.63608	0.00805		
Corrected Total	81	7.50390			

Root MSE	0.08973	R-Square	0.9152
Dependent Mean	3.47571	Adj R-Sq	0.9131
Coeff Var	2.58167		

Parameter Estimates					
Variable	DF	Parameter Estimate	Standard Error	t Value	Pr > t
Intercept	1	4.49930	0.04384	102.62	<.0001
hp	1	-0.00117	0.00031636	-3.70	0.0004
wt	1	-0.02867	0.00221	-12.98	<.0001

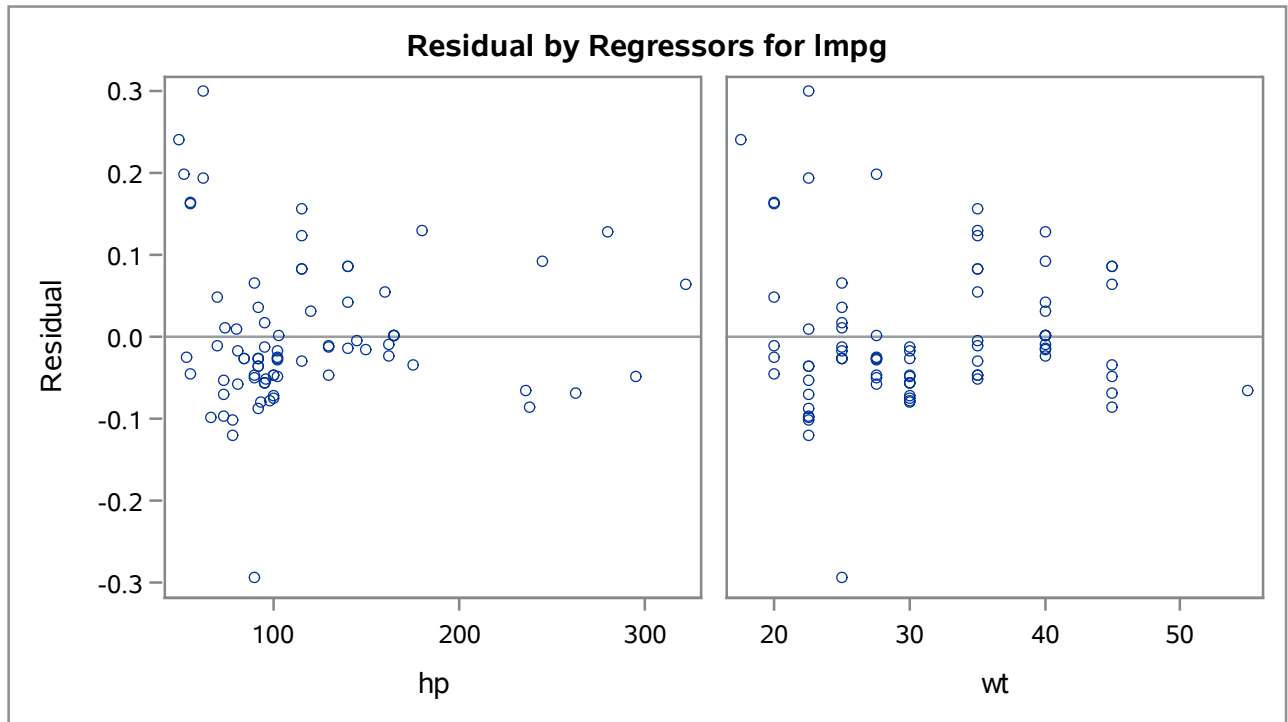
The REG Procedure
 Model: MODEL1
 Dependent Variable: Impg

Fit Diagnostics for Impg



Observations	82
Parameters	3
Error DF	79
MSE	0.0081
R-Square	0.9152
Adj R-Square	0.9131

The REG Procedure
Model: MODEL1
Dependent Variable: Impg



The REG Procedure
 Model: MODEL1
 Dependent Variable: Impg

Number of Observations Read	82
Number of Observations Used	82

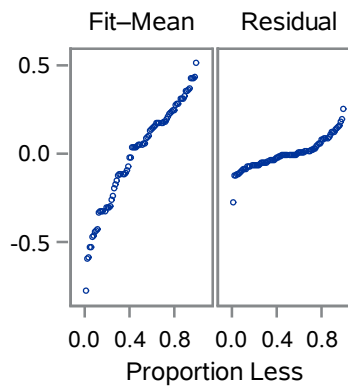
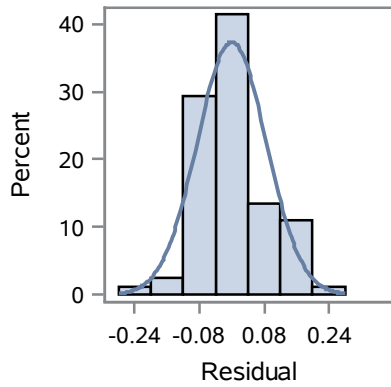
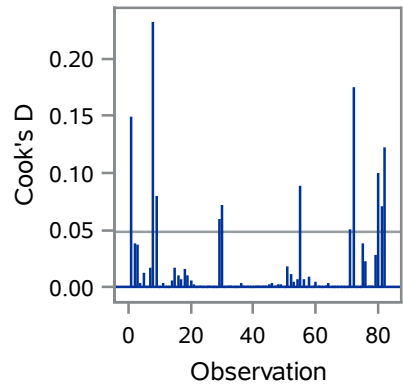
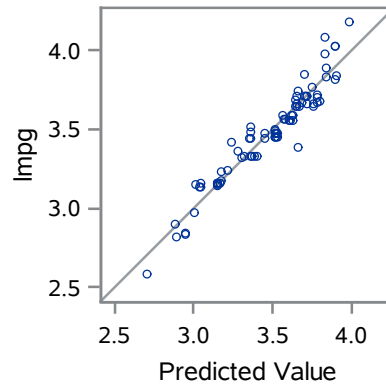
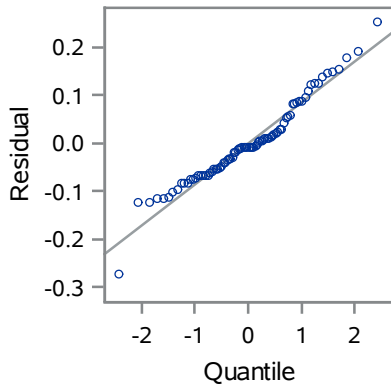
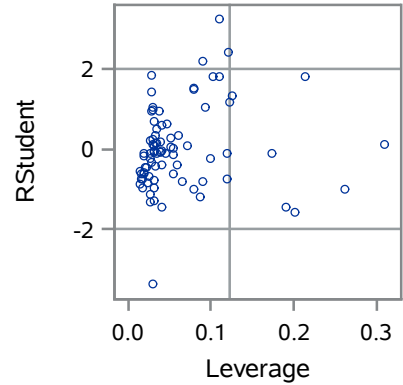
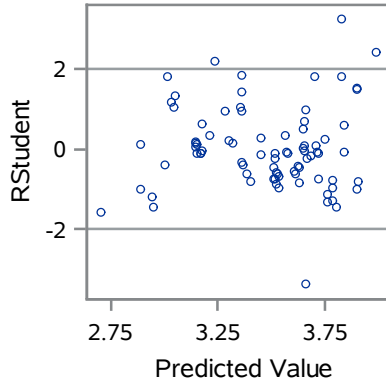
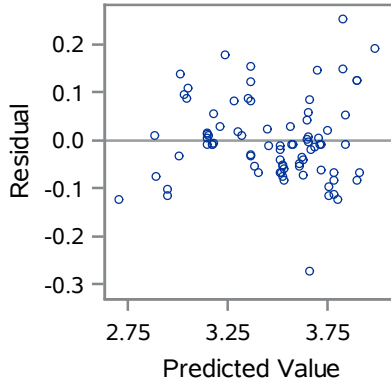
Analysis of Variance					
Source	DF	Sum of Squares	Mean Square	F Value	Pr > F
Model	4	6.91210	1.72803	224.83	<.0001
Error	77	0.59180	0.00769		
Corrected Total	81	7.50390			

Root MSE	0.08767	R-Square	0.9211
Dependent Mean	3.47571	Adj R-Sq	0.9170
Coeff Var	2.52232		

Parameter Estimates					
Variable	DF	Parameter Estimate	Standard Error	t Value	Pr > t
Intercept	1	5.77252	0.56477	10.22	<.0001
vol	1	-0.00030881	0.00054782	-0.56	0.5746
hp	1	0.00295	0.00195	1.51	0.1355
sp	1	-0.01305	0.00587	-2.22	0.0292
wt	1	-0.03701	0.00512	-7.23	<.0001

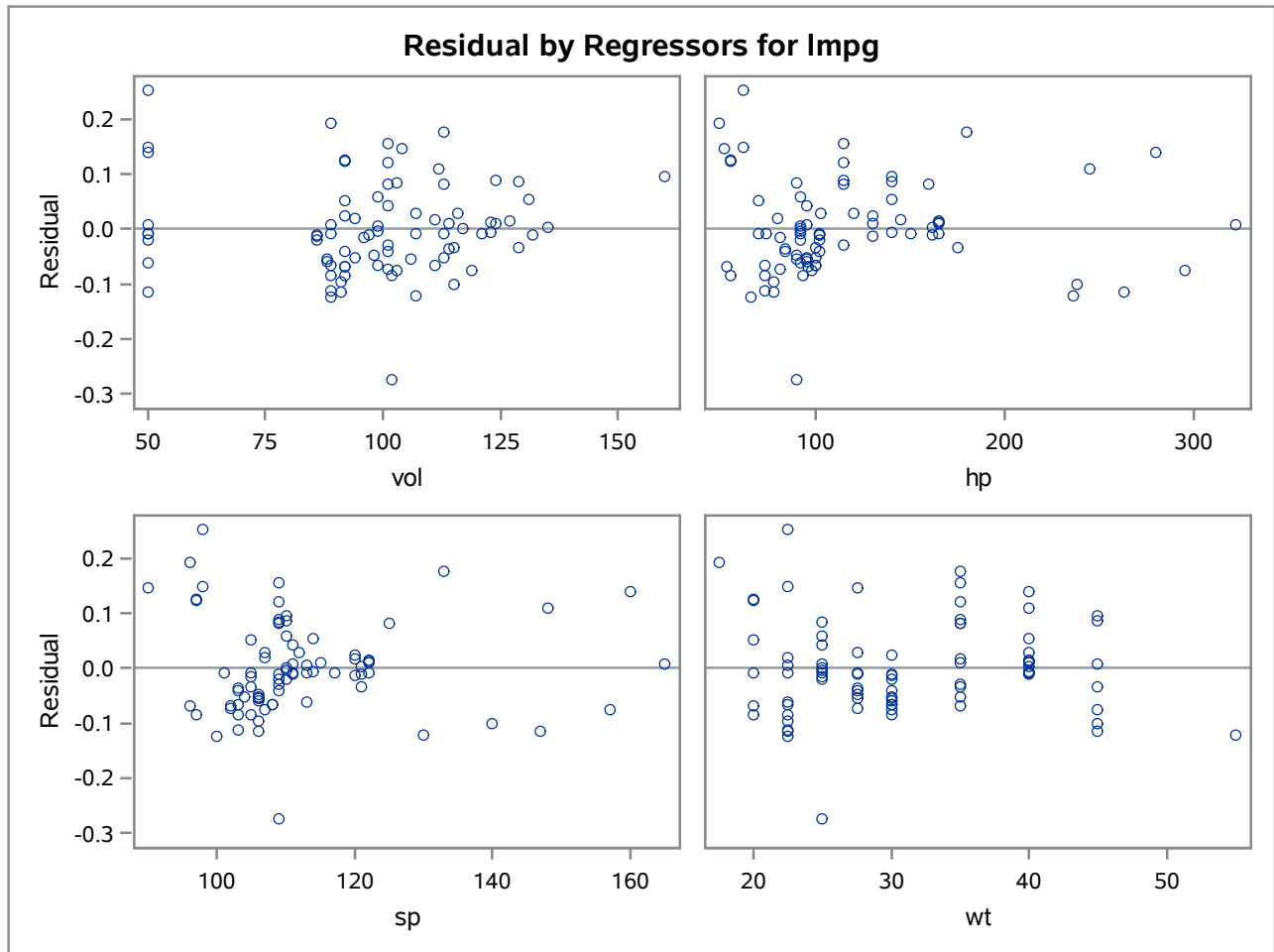
The REG Procedure
 Model: MODEL1
 Dependent Variable: Impg

Fit Diagnostics for Impg



Observations	82
Parameters	5
Error DF	77
MSE	0.0077
R-Square	0.9211
Adj R-Square	0.917

The REG Procedure
Model: MODEL1
Dependent Variable: Impg



**The REG Procedure
Model: MODEL1**

Test volspeffect Results for Dependent Variable Impg				
Source	DF	Mean Square	F Value	Pr > F
Numerator	2	0.02214	2.88	0.0622
Denominator	77	0.00769		