

SLID data

Obs	age	sex	wages	yearsed	male	log2wages	obs
1	40	Male	10.56	15	1	3.40054	1
2	19	Male	11.00	13	1	3.45943	2
3	46	Male	17.76	14	1	4.15056	3
4	50	Female	14.00	16	0	3.80735	4
5	31	Male	8.20	15	1	3.03562	5
6	30	Female	16.97	13	0	4.08491	6
7	61	Female	6.70	12	0	2.74416	7
8	46	Female	14.00	14	0	3.80735	8
9	43	Male	19.20	18	1	4.26303	9
10	17	Male	7.25	11	1	2.85798	10

The REG Procedure
Model: MODEL1
Dependent Variable: log2wages

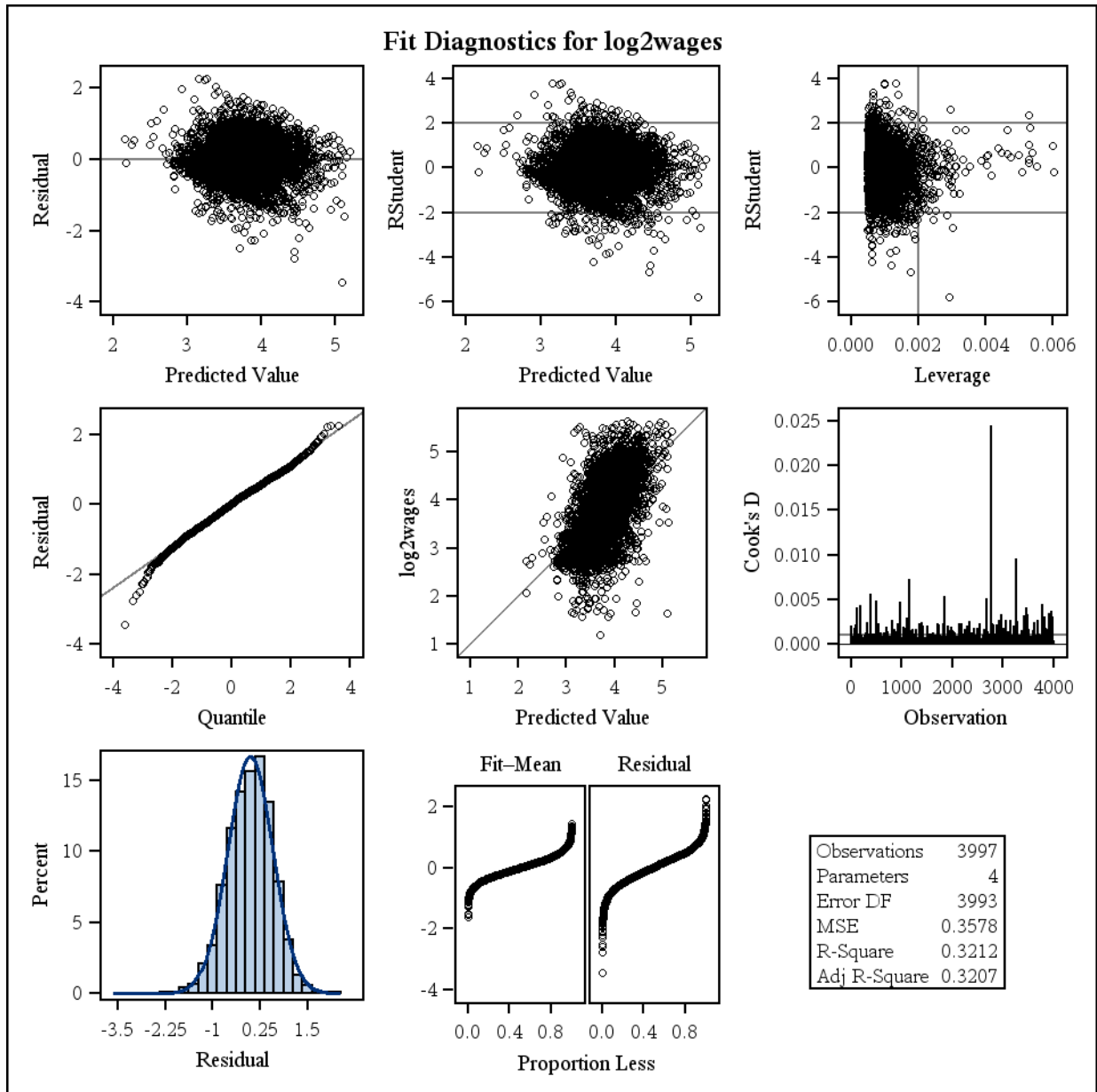
Number of Observations Read	3997
Number of Observations Used	3997

Analysis of Variance					
Source	DF	Sum of Squares	Mean Square	F Value	Pr > F
Model	3	675.98262	225.32754	629.73	<.0001
Error	3993	1428.75529	0.35781		
Corrected Total	3996	2104.73790			

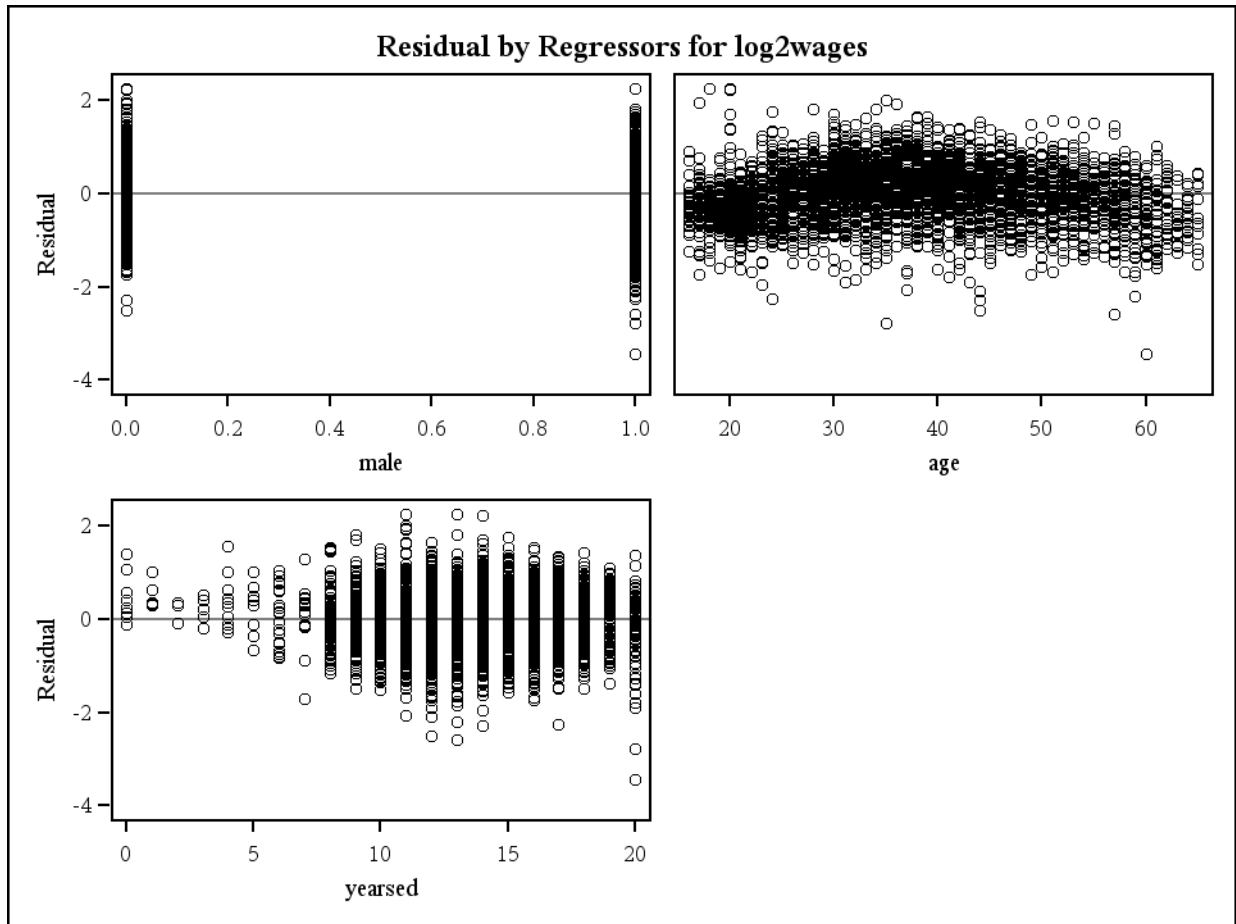
Root MSE	0.59818	R-Square	0.3212
Dependent Mean	3.77985	Adj R-Sq	0.3207
Coeff Var	15.82539		

Parameter Estimates					
Variable	DF	Parameter Estimate	Standard Error	t Value	Pr > t
Intercept	1	1.58555	0.05477	28.95	<.0001
male	1	0.32388	0.01893	17.11	<.0001
age	1	0.02619	0.00079225	33.06	<.0001
yearsded	1	0.08061	0.00313	25.73	<.0001

The REG Procedure
Model: MODEL1
Dependent Variable: log2wages



The REG Procedure
Model: MODEL1
Dependent Variable: log2wages

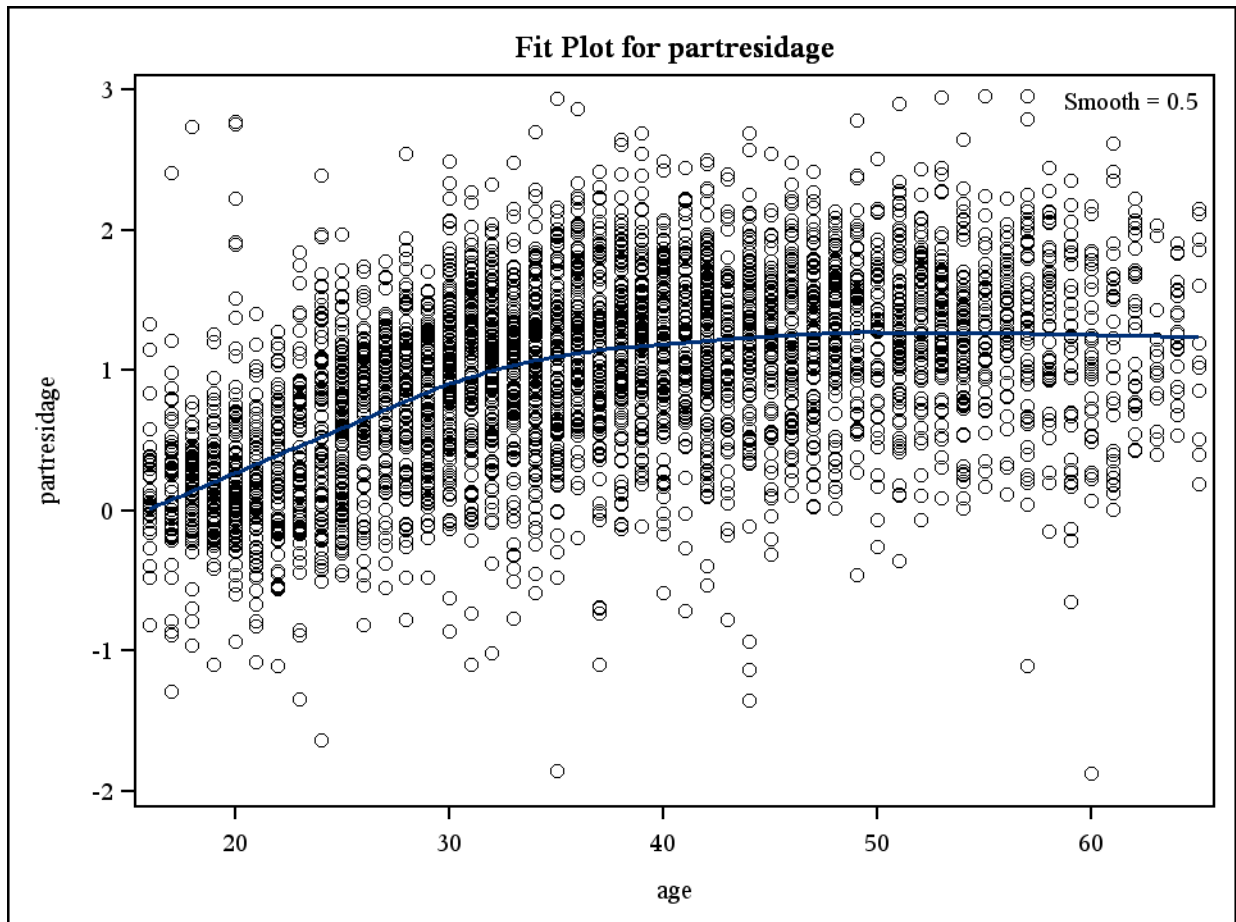


The LOESS Procedure

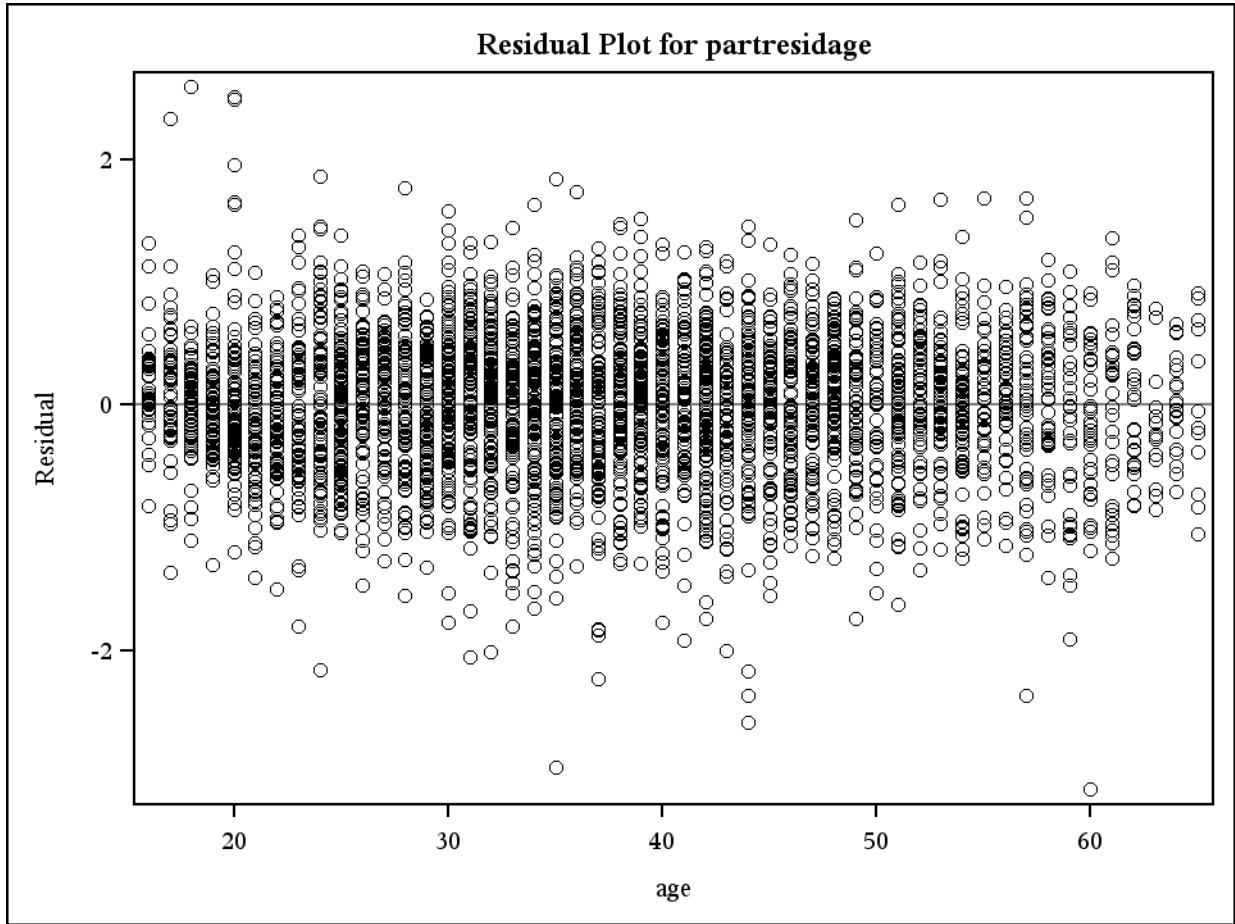
Independent Variable Scaling	
Scaling applied: None	
Statistic	age
Minimum Value	16.00000
Maximum Value	65.00000

The LOESS Procedure
Smoothing Parameter: 0.5
Dependent Variable: partresidage

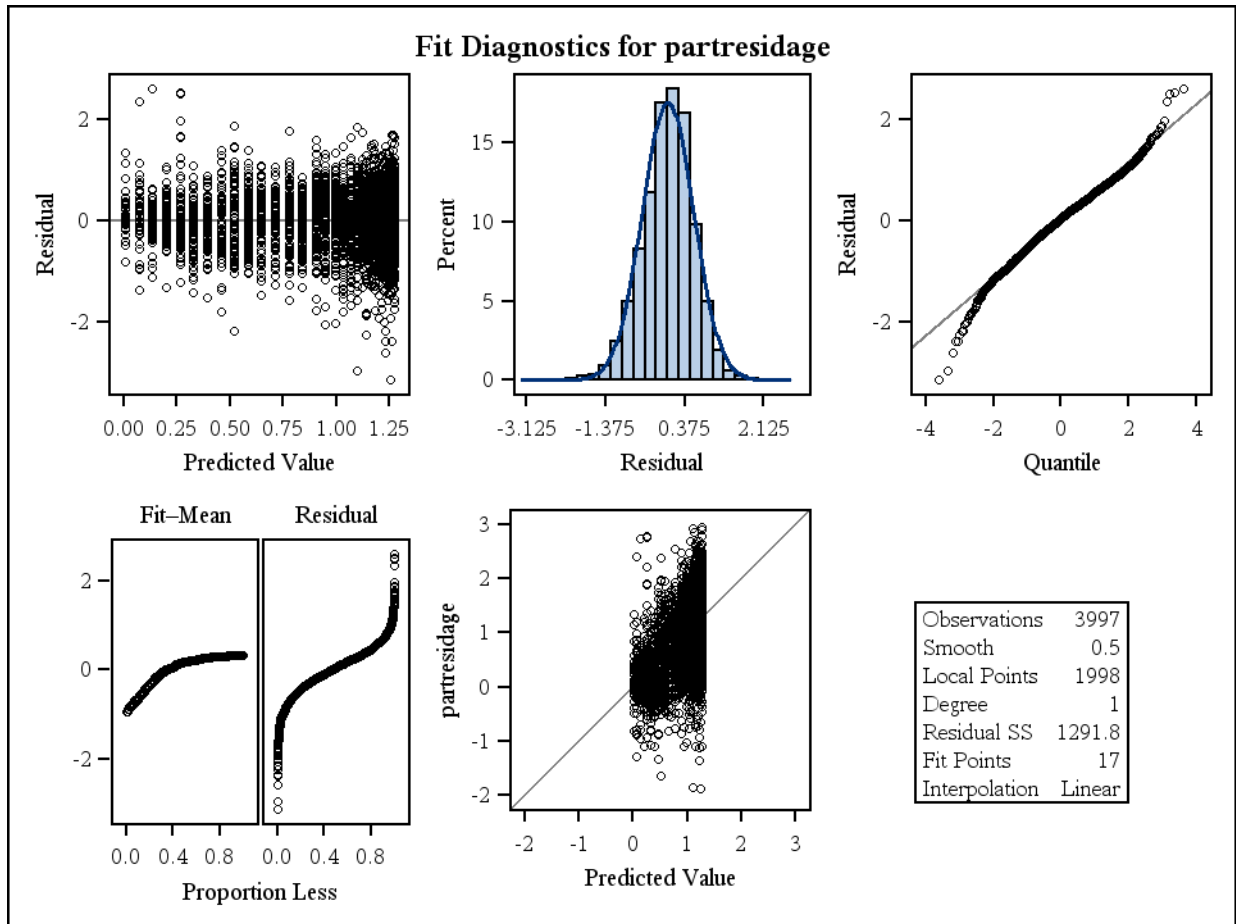
Fit Summary	
Fit Method	kd Tree
Blending	Linear
Number of Observations	3997
Number of Fitting Points	17
kd Tree Bucket Size	399
Degree of Local Polynomials	1
Smoothing Parameter	0.50000
Points in Local Neighborhood	1998
Residual Sum of Squares	1291.82329



The LOESS Procedure
Smoothing Parameter: 0.5
Dependent Variable: partresidage



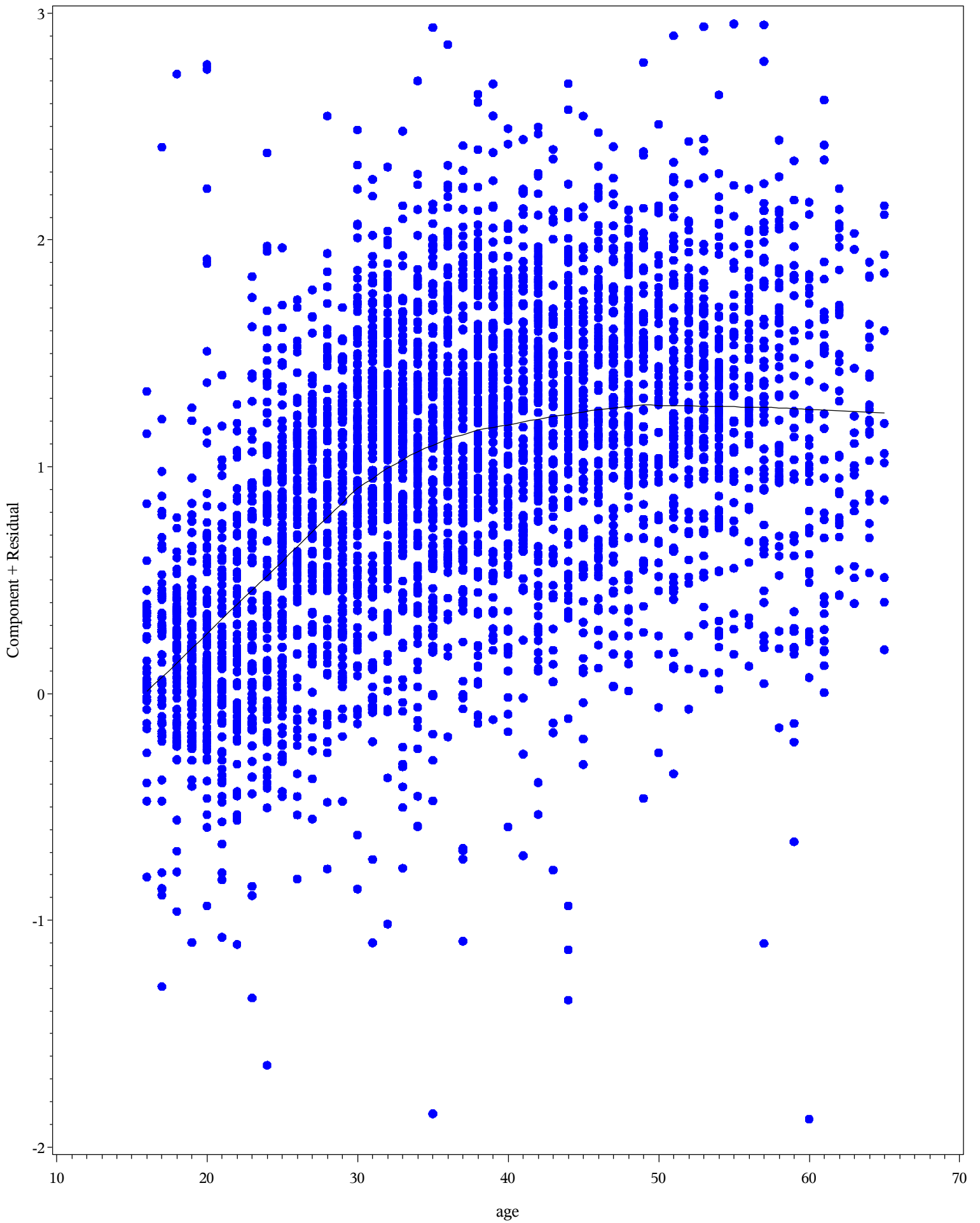
The LOESS Procedure
Smoothing Parameter: 0.5
Dependent Variable: partresidage



SLID data

Obs	SmoothingParameter	Obs	age	DepVar	Pred	Residual
1	0.5	1	40	0.28185	1.18453	-0.90269
2	0.5	2	19	0.50200	0.20038	0.30163
3	0.5	3	46	1.11247	1.25095	-0.13848
4	0.5	4	50	0.93191	1.27093	-0.33902
5	0.5	5	31	-0.08305	0.94883	-1.03188
6	0.5	6	30	1.45135	0.90363	0.54771
7	0.5	7	61	0.19115	1.25017	-1.05902
8	0.5	8	46	1.09314	1.25095	-0.15781
9	0.5	9	43	0.90250	1.22165	-0.31915
10	0.5	10	17	0.06178	0.07281	-0.01103

SLID data

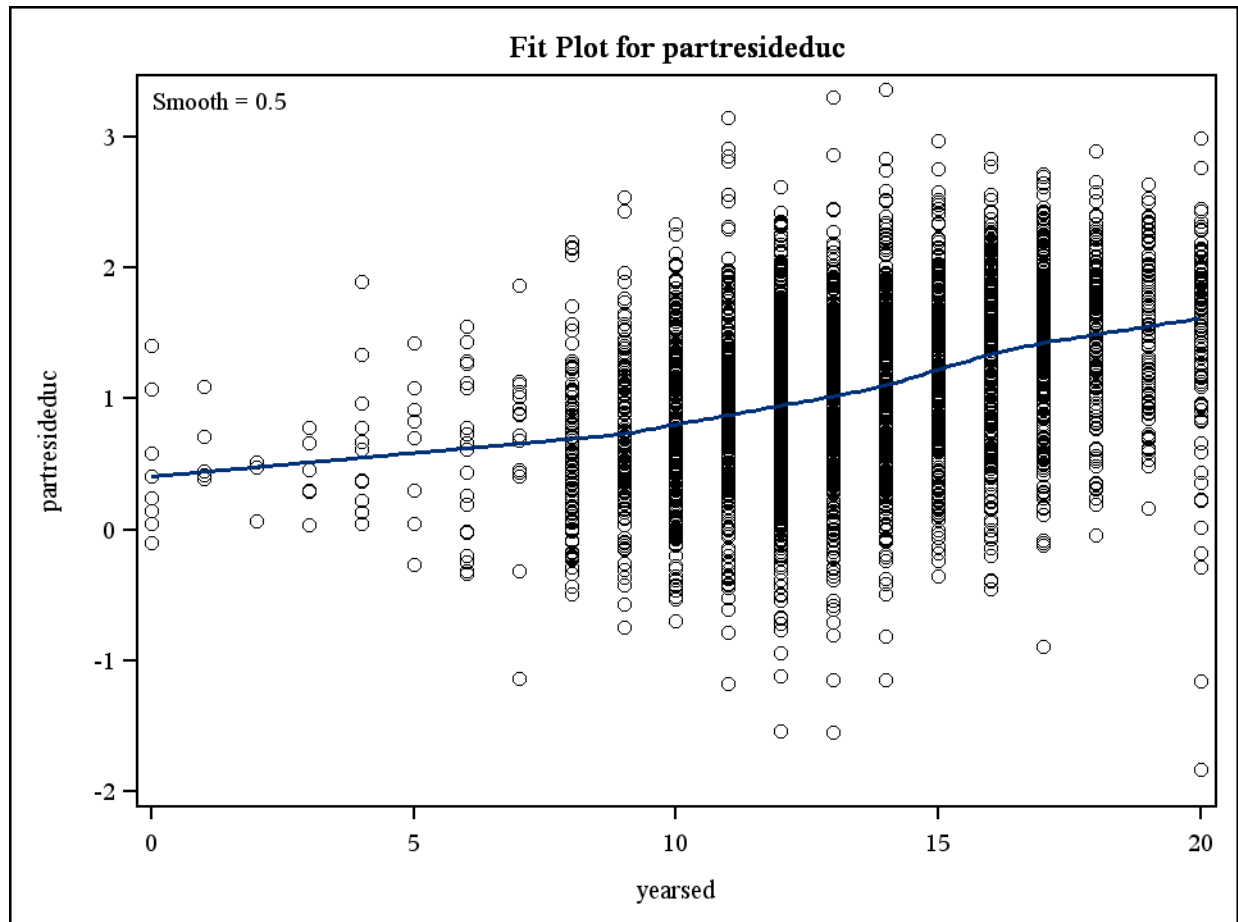


The LOESS Procedure

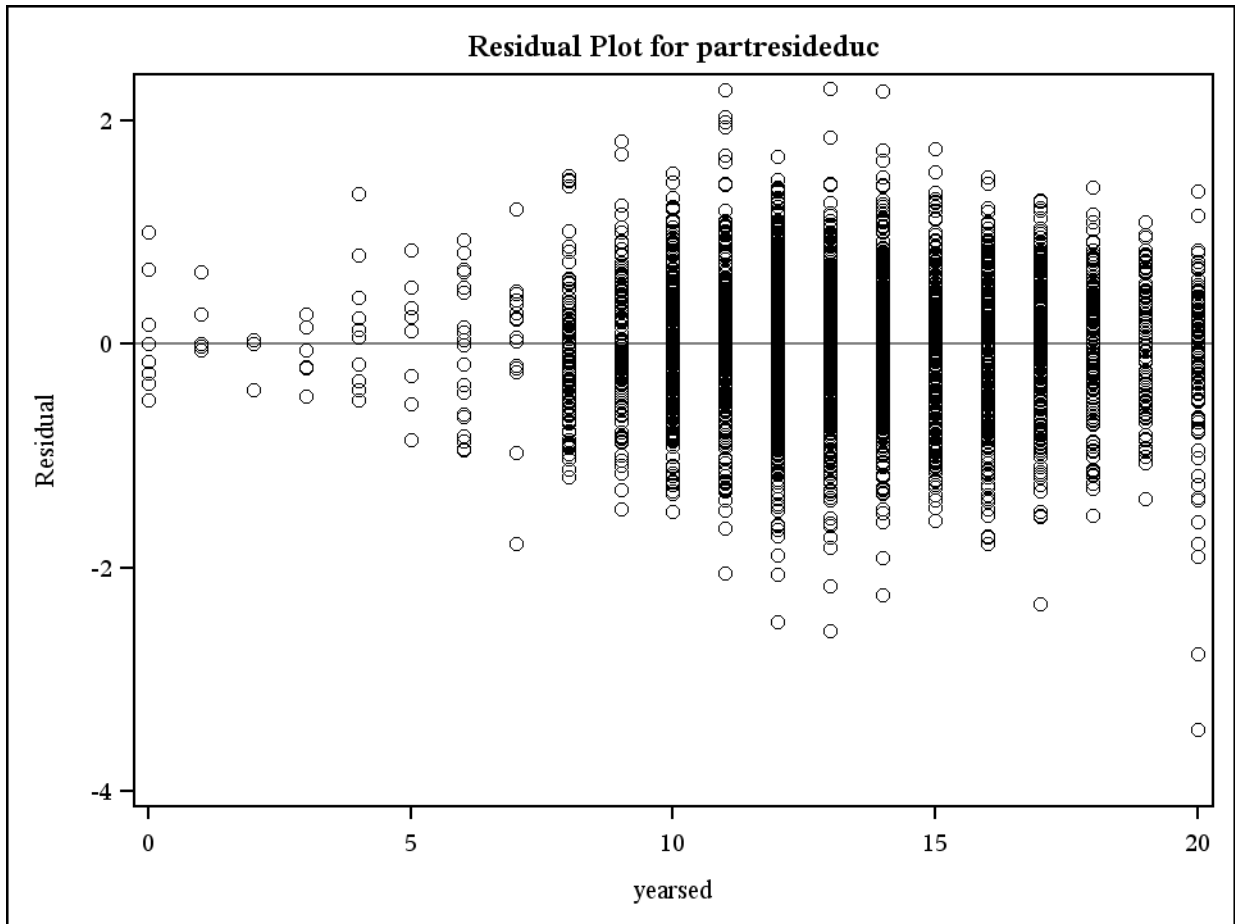
Independent Variable Scaling	
Scaling applied: None	
Statistic	yearsed
Minimum Value	0
Maximum Value	20.00000

The LOESS Procedure
Smoothing Parameter: 0.5
Dependent Variable: partresideduc

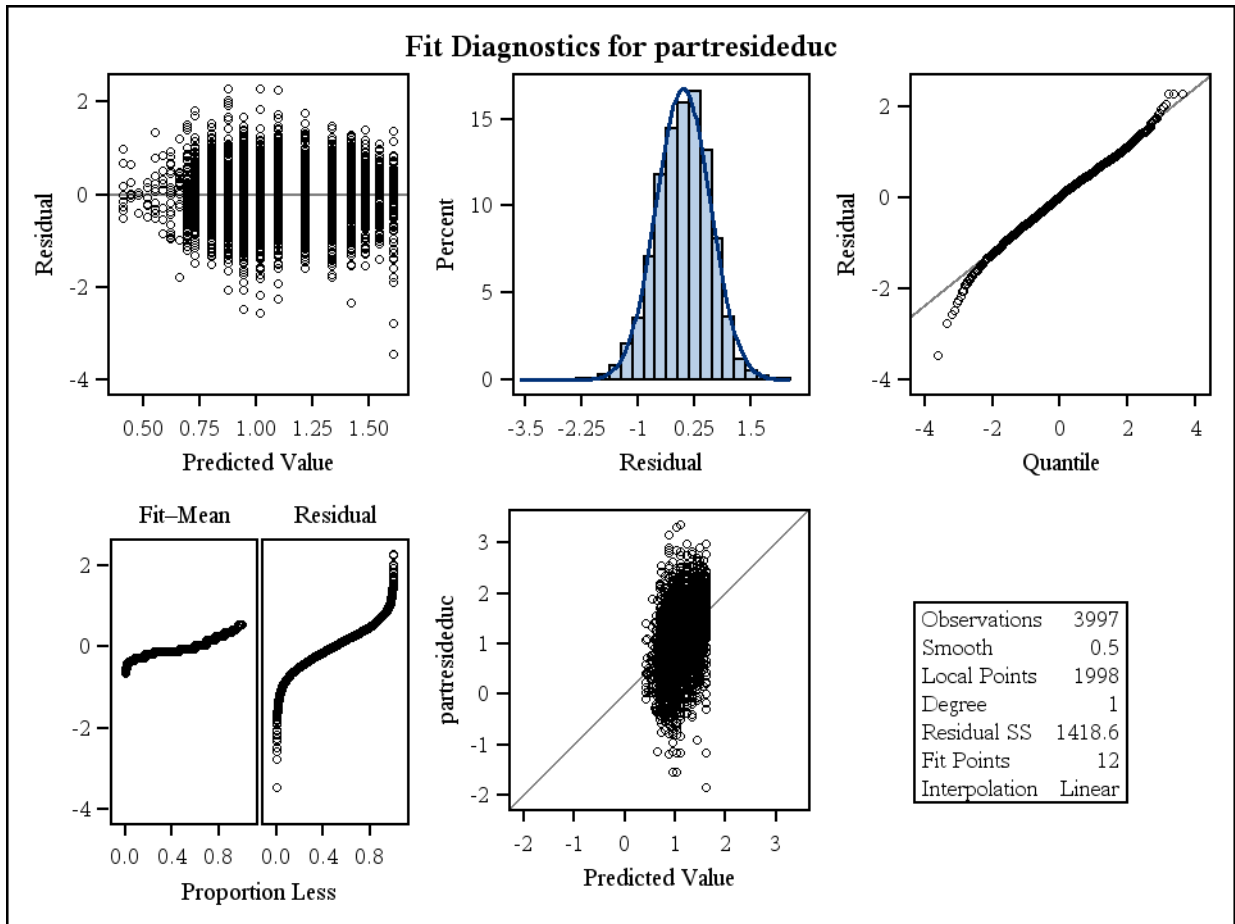
Fit Summary	
Fit Method	kd Tree
Blending	Linear
Number of Observations	3997
Number of Fitting Points	12
kd Tree Bucket Size	399
Degree of Local Polynomials	1
Smoothing Parameter	0.50000
Points in Local Neighborhood	1998
Residual Sum of Squares	1418.61366



The LOESS Procedure
Smoothing Parameter: 0.5
Dependent Variable: partresideduc



The LOESS Procedure
Smoothing Parameter: 0.5
Dependent Variable: partresideduc



Obs	SmoothingParameter	Obs	yearsed	DepVar	Pred	Residual
1	0.5	1	15	0.44340	1.21846	-0.77506
2	0.5	2	13	1.05232	1.01490	0.03742
3	0.5	3	14	1.03627	1.09579	-0.05952
4	0.5	4	16	0.91217	1.33630	-0.42413
5	0.5	5	15	0.31421	1.21846	-0.90425
6	0.5	6	13	1.71358	1.01490	0.69867
7	0.5	7	12	-0.43912	0.94412	-1.38325
8	0.5	8	14	1.01694	1.09579	-0.07885
9	0.5	9	18	1.22731	1.48710	-0.25979
10	0.5	10	11	0.50326	0.87170	-0.36844

SLID data

