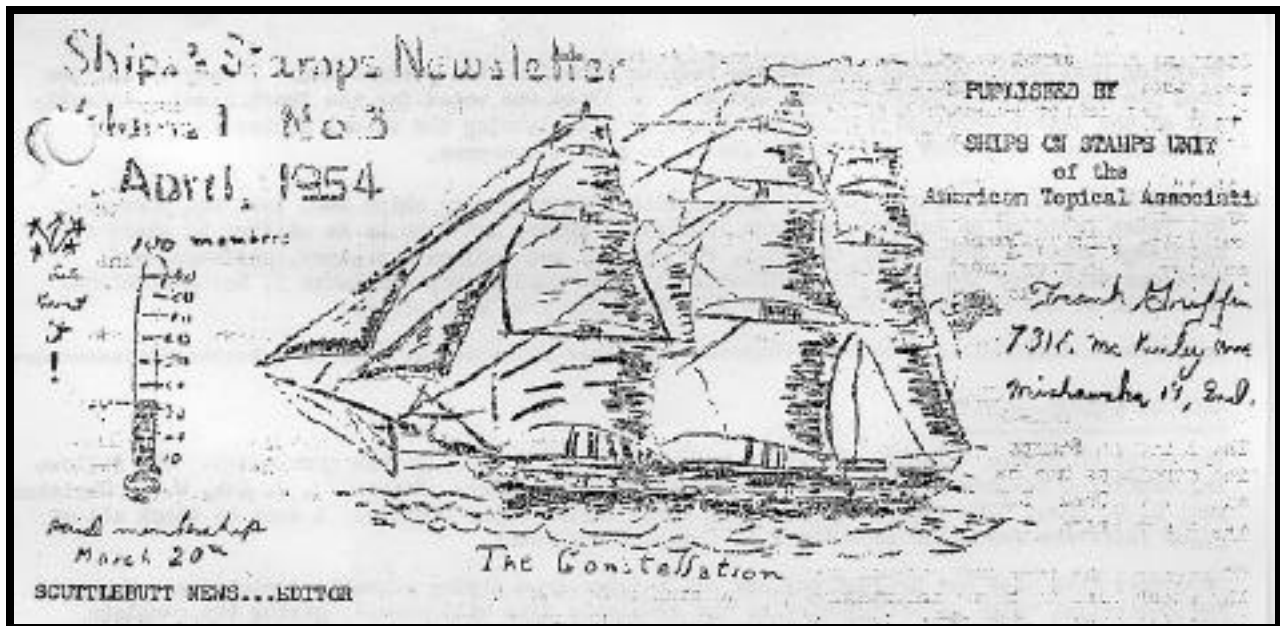




Anyone with information on this stamp from 1984, please contact the editor.



## Congratulations, 50 Years!

3



## Chronology of Maritime Exploration and Discovery

**ca. 2750 BCE** First recorded expedition of exploration from Egypt.

**ca. 2560 BCE** Pharaoh Snefru brings 40 ships from Byblus to Phoenicia.

**ca. 2500 BCE** Sea trade between Indus Valley and Persian Gulf.

**ca. 2500 BCE** Polynesians begin their migration throughout the South Pacific around this time.

**ca. 1500 BCE** Polynesians reach Santa Cruz, Vanuatu, New Caledonia, and Fiji. Hatshepsut sends expedition to Punt.

**7th cent. BCE** Phoenician merchant seamen explore the Mediterranean Sea and Atlantic coastline south to Africa and north to Europe. Pharaoh Necho sends Phoenician ships on expedition around Africa.

**510 BCE** Scylax explores India, Arabia, and northern Afghanistan for the Persian empire

**500 BCE** Polynesians reach Tahiti. Hanno travels down the northwestern coast of Africa. Expedition recorded by Greeks. Himilco travels to England and establishes tin trade..

**4th cent. BCE** Greeks add England and India to their maps. Lateen (fore-and-aft) sails begin to predominate over square sails in Mediterranean.

**310-306 BCE** Pytheas sails to Britain and Thule.

**275 BCE** Canal between the Nile River and the Red Sea is reopened to shipping.

**146 BCE** Eudoxus of Cyzicus sails to India.

**1st century A.D.** Chinese invent first compass.

**120** Ptolemy (Claudius Ptolemaeus A.D. 90 - 168) of Egypt, a mathematician and astronomer who works in Alexandria, builds the foundations of cartography. He invents a number of projections whereby an area on the curved surface of the Earth can be represented on a flat surface. His world system places the Earth at the center of the universe with celestial bodies circling around it

**ca. 300** Polynesian voyagers reach Easter Island and Tahiti

**ca. 400** Polynesians colonize Hawaii

**790** Irish monks reach Iceland; Norse follow ca.860.

**860** Norse settlement of Iceland begins

**982** Eirik (The Red) Thorvaldsson reaches Greenland.

**ca 1000** Leif (The Lucky) Ericsson reaches Newfoundland from Greenland. Maori reach New Zealand from Central Polynesia.

**10th century** Constantinople (Byzantium) recognized as the first city of the world to be a commercial and cultural center.

**1050** Astrolabes arrive in Europe from the East.

**1066** Normans (Vikings) conquer England.

**1081** A trade treaty is established between Venice and the Byzantine Empire.

**1151** First use of explosives in war, by China.

**1191** First exports of tea from China.

**1225** Cotton manufacturing established in Spain.

**1233** First coal is mined in Newcastle, England.

**1240** The Hanseatic League is formed in the Baltic region and becomes the North terminus for Far East

trade.

**1271-95** Marco Polo journeys to China establishing the overland trade route. He leaves China in 1292 and three years later arrives home.

**1291** Vivaldi brothers attempt to circumnavigate Africa.

**12th cent.** Rudimentary compasses in Europe.

**1325** Ibn Buttuta leaves on pilgrimage travelling over much of the known Arab world

**1328** Invention of sawmill spurs shipbuilding.

**1355** Ibn Buttuta returns home from his travels.

**13th cent.** Vertical hinged rudder first appears in northern Europe, eventually to replace sidemounted steering oar. Cross staff for measuring altitudes of celestial bodies invented by Jacob ben Makir in southern France.

**13th century** Nomadic Mongols capture most of Eurasia, Korea, and Hungary.

**13th-15th cent.** Fore-and-aft rigged caravels evolve in Mediterranean and are used extensively in voyages of exploration.

**1405** Admiral Cheng Ho begins his voyages for Emperor Chu Ti. The Treasure Fleet of the Dragon Throne rules the South Pacific and Indian Ocean until 1433.

**1405-33** Zheng He's seven expeditions to Indian Ocean. **CH'ING HO.**

**1406** Ptolemy's geography is introduced in Europe.

**1420** Portuguese reach the Madeira Islands.

**1420-1460** Prince Henry the Navigator of Portugal directs his country's voyages of exploration.

**1427** Portuguese reach the Azores.

**1432** Portuguese navigators discover the Azores.

**1437** Henry of Portugal founds Portuguese Colonia Institute.

**1441** Portuguese navigators cruise West Africa and reestablish slave trade.

**1445** Portuguese reach Cape Verde

**1450** Invention of the printing press spurs wide distribution of navigation tables and ship plans. Ptolemy's geography is published and widely accepted.

**1450ca** Prince Henry the Navigator establishes a Naval observatory for the teaching of navigation, astronomy, and cartography.

**1453** Turks overrun Constantinople, shutting off the overland trade route.

**1456** Portuguese reach the Cape Verde Islands.

**1470-84** Portuguese explorations discover Africa's Gold Coast and the Congo River.

**1487-1488** Bartholomeu Diaz sails around Cape of Good Hope, South Africa. **SAO CRISTOVAO** and **SAO PANTALEAO.**

To be continued in next issue.

