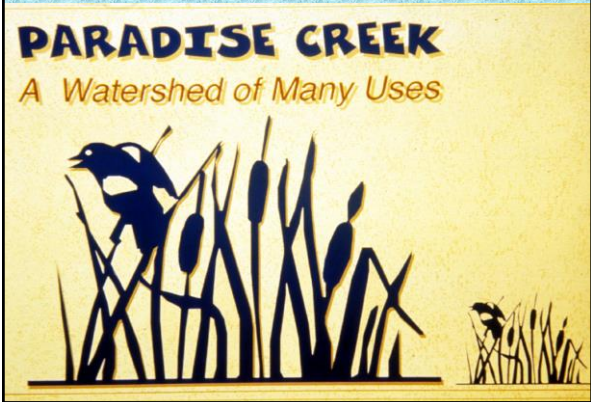


# Palouse Water



1

---

---

---

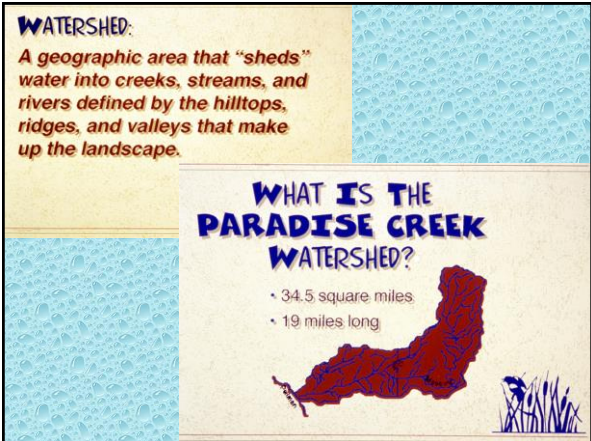
---

---

---

---

---



2

---

---

---

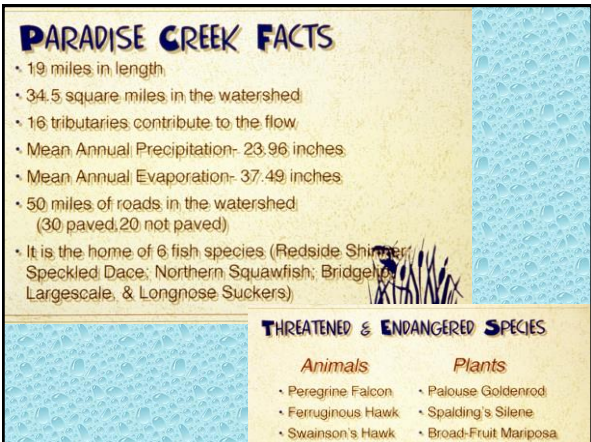
---

---

---

---

---



3

---

---

---

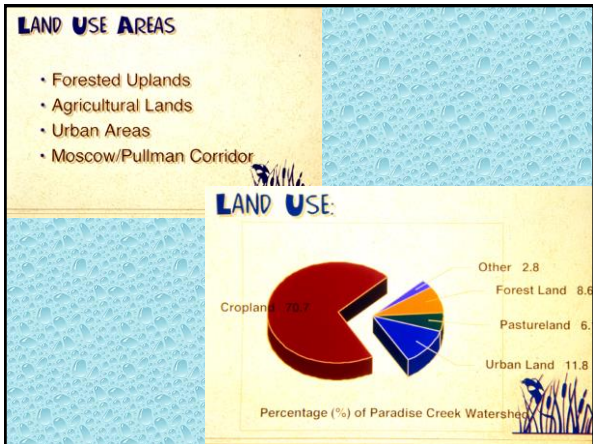
---

---

---

---

---




---

---

---

---

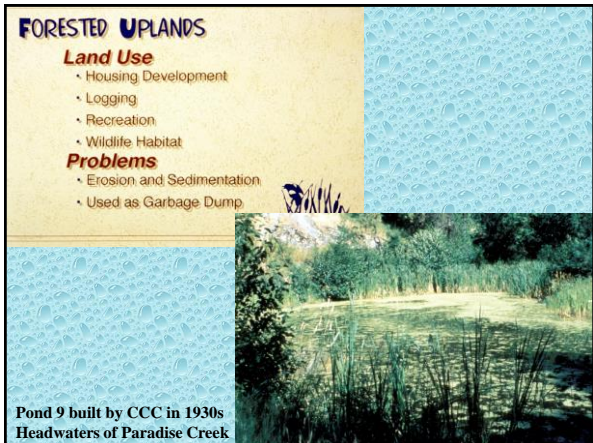
---

---

---

---

4




---

---

---

---

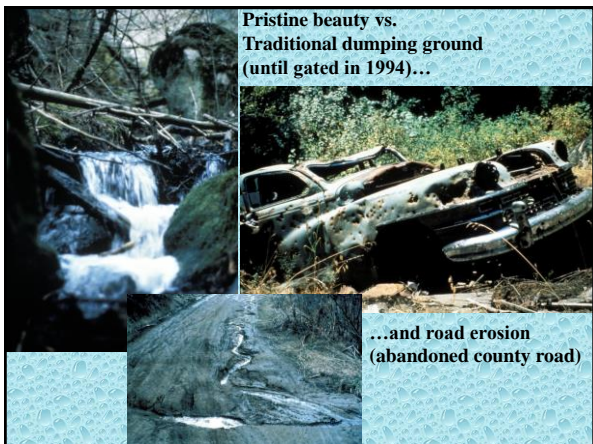
---

---

---

---

5




---

---

---

---

---

---

---

---

6

**AGRICULTURAL LANDS**


**Land Use**

- Agriculture
- Grazing

**Problems**

- Erosion and Sedimentation
- Loss of Riparian and Wetland Areas
- Absence of Canopy Cover
- Channel Alteration

**Formed by wind erosion**



---

---

---

---

---

---

---

---

7

**Field burning to remove weeds and stubble...**

**...leads to springtime erosion...**



---

---

---

---

---

---

---

---

8

**...grazing impacts...**

**...and channel straightening...**



---

---

---

---

---

---

---

---

9

**URBAN AREAS—Moscow & Pullman**

**Land Use**

- Housing
- Industry
- Transportation
- Retail Business
- Parks

**Problems**

- Chemical Contamination
- Urban Development, Waste, and Runoff
- Channel Alteration
- Loss of Riparian Zone
- MWWTP Discharge

**Mountain View Park:  
Filled-in wetlands  
No trees in riparian zone  
Lawn chemicals**

10

---

---

---

---

---

---

---

---

**...channelization...**

**...bank erosion...**

11

---

---

---

---

---

---

---

---

**...“ecology” blocks...**

**...Paradise Creek Street  
(1/4 mile flow under street)...**

12

---

---

---

---

---

---

---

---



...Student Rec Center...  
 ...new flood basin...

13

---

---

---

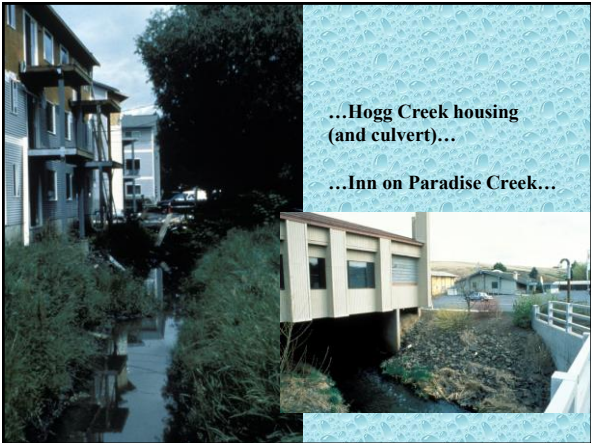
---

---

---

---

---



...Hogg Creek housing  
 (and culvert)...  
 ...Inn on Paradise Creek...

14

---

---

---

---

---

---

---

---



...parking lot storm drains  
 bring  
 ←anti-freeze  
 ...and other pollutants↓...

←and thermal discharge...

15

---

---

---

---

---

---

---

---



16

---

---

---

---

---

---

---

---



17

---

---

---

---

---

---

---

---



18

---

---

---

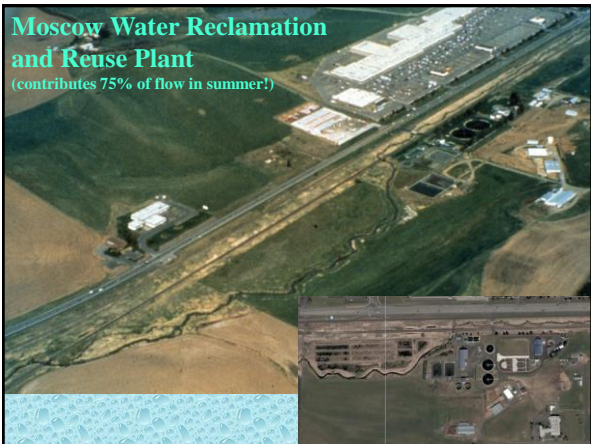
---

---

---

---

---



19

---

---

---

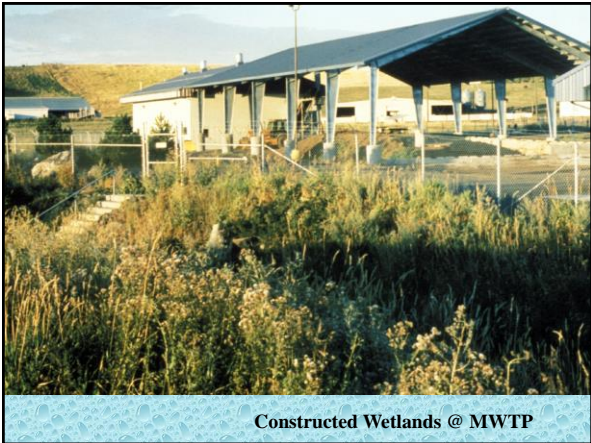
---

---

---

---

---



Constructed Wetlands @ MWTP

20

---

---

---

---

---

---

---

---

**MOSCOW/PULLMAN CORRIDOR**

**Land Use**

- Grazing
- Industry/Mining
- Transportation

**Problems**

- Urban/highway Runoff
- Channel Alteration
- Erosion and Sedimentation

Squeezed in... no overhanging vegetation ...+ 19 RR bridges since 1885...

21

---

---

---

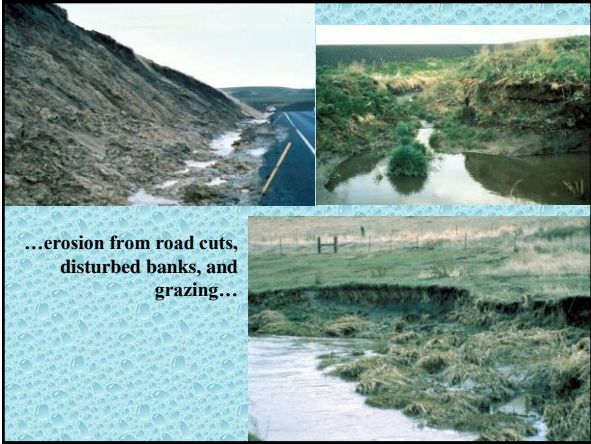
---

---

---

---

---



...erosion from road cuts,  
disturbed banks, and  
grazing...

---

---

---

---

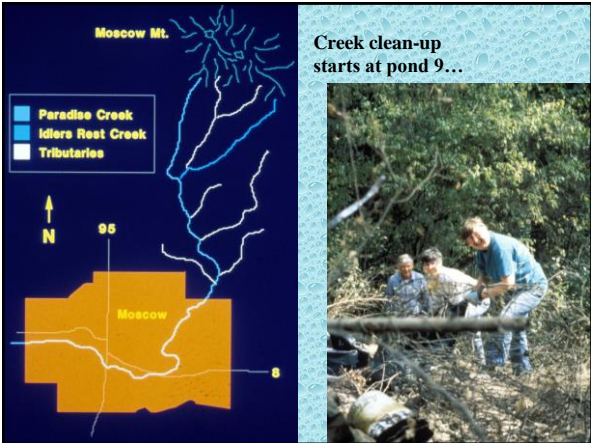
---

---

---

---

22



Creek clean-up  
starts at pond 9...

---

---

---

---

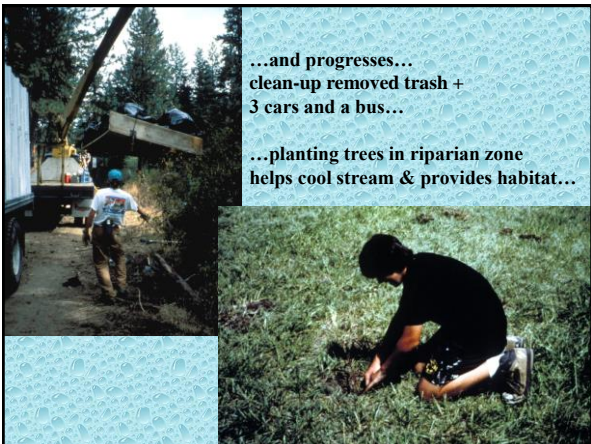
---

---

---

---

23



...and progresses...  
clean-up removed trash +  
3 cars and a bus...  
  
...planting trees in riparian zone  
helps cool stream & provides habitat...

---

---

---

---

---

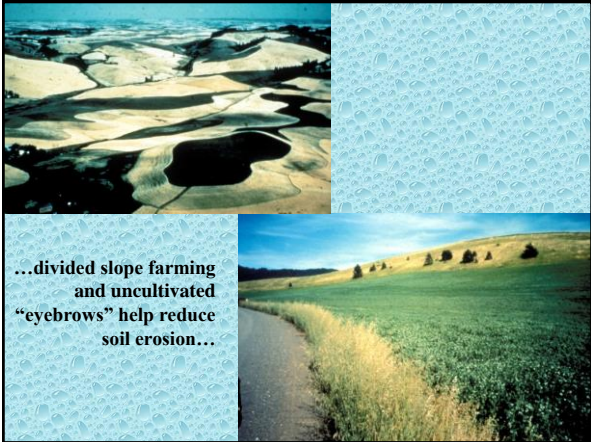
---

---

---

24





25

---

---

---

---

---

---

---

---



26

---

---

---

---

---

---

---

---



27

---

---

---

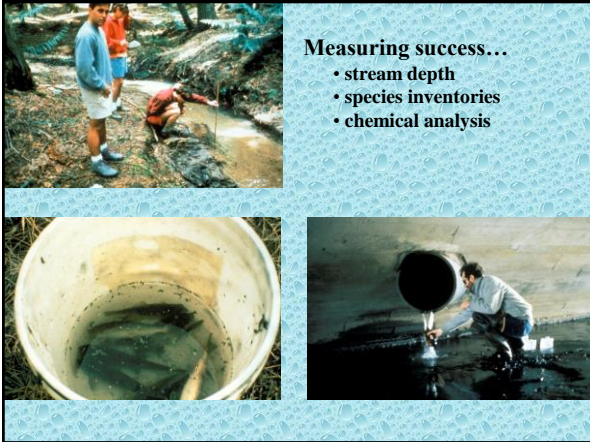
---

---

---

---

---



28

---

---

---

---

---

---

---

---



29

---

---

---

---

---

---

---

---



30

---

---

---

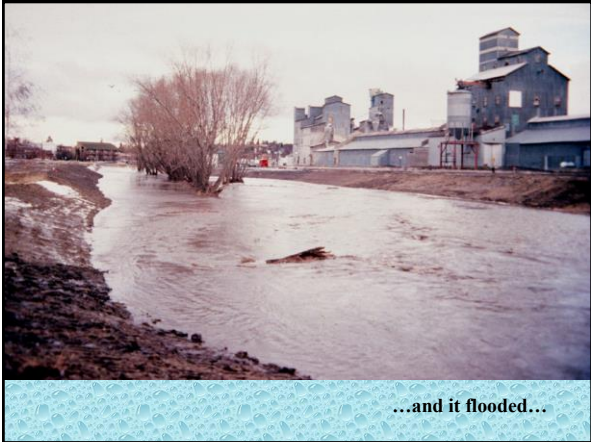
---

---

---

---

---



31

---

---

---

---

---

---

---

---



32

---

---

---

---

---

---

---

---



33

---

---

---

---

---

---

---

---



34

---

---

---

---

---

---

---

---



35

---

---

---

---

---

---

---

---



36

---

---

---

---

---

---

---

---



37

---

---

---

---

---

---

---

---



38

---

---

---

---

---

---

---

---



39

---

---

---

---

---

---

---

---



40

---

---

---

---

---

---

---

---



41

---

---

---

---

---

---

---

---



42

---

---

---

---

---

---

---

---

Dec 2018



43

---

---

---

---

---

---

---

---



44

---

---

---

---

---

---

---

---



45

---

---

---

---

---

---


---

---

## SOLUTIONS

### What can be done?

- Educate public about Paradise Creek
- Organize trash clean-ups
- Plant trees for canopy cover & erosion control
- Prevent the dumping of wastes into drainage basins and stream
- Develop alternative agricultural practices
- Restore creek when possible!!!



...design with stream health in mind...

---

---

---

---

---

---

---

---

---

---

46

**FUNDING PROVIDED BY:**  
*The Palouse Conservation District & Washington Department of Ecology*




**PRODUCED BY:**  
*Adam Thornbrough & Brian Ellis,  
 Palouse-Clearwater Environmental Institute*

...and a little help from their friend...

---

---

---

---

---

---


---

---

---

---

47



...and of course there's a free Android/Apple app that you can use to check out your local creek's well-being!

**Download: How's My Waterway?**

**WHAT IT'S CALLED:** How's My Waterway?  
**COMPATIBLE WITH:** Android, Apple  
**WHAT IT DOES:** Lets users learn about the health of lakes, rivers, or streams within a five-mile radius of any zip code, including pollution assessment status and abatement measures  
**HOW MUCH IT COSTS:** Free

---

---

---

---

---

---

---

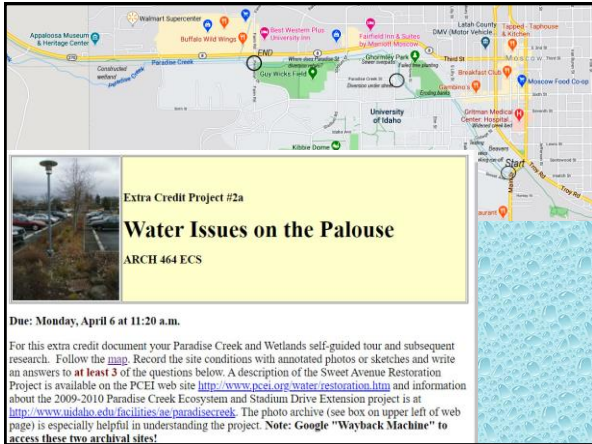
---

---

---

48





Extra Credit Project #2a

## Water Issues on the Palouse

ARCH 464 ECS

**Due: Monday, April 6 at 11:20 a.m.**

For this extra credit document your Paradise Creek and Wetlands self-guided tour and subsequent research. Follow the [map](#). Record the site conditions with annotated photos or sketches and write an answers to **at least 3** of the questions below. A description of the Sweet Avenue Restoration Project is available on the PCEI web site <http://www.pcei.org/water/restoration.htm> and information about the 2009-2010 Paradise Creek Ecosystem and Stadium Drive Extension project is at <http://www.widaho.edu/facilities/nc/paradisecreek>. The photo archive (see box on upper left of web page) is especially helpful in understanding the project. **Note: Google "Wayback Machine" to access these two archival sites!**

---



---



---



---



---



---



---