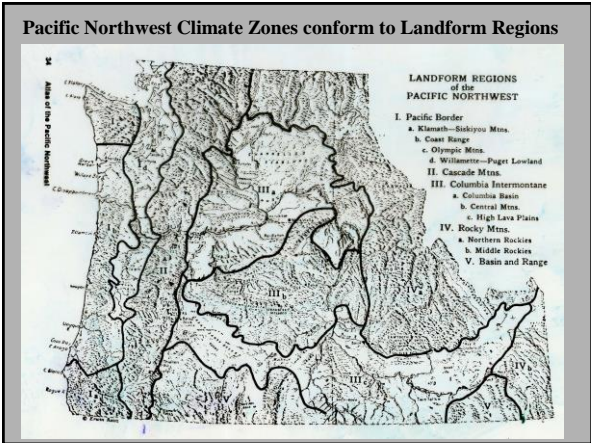


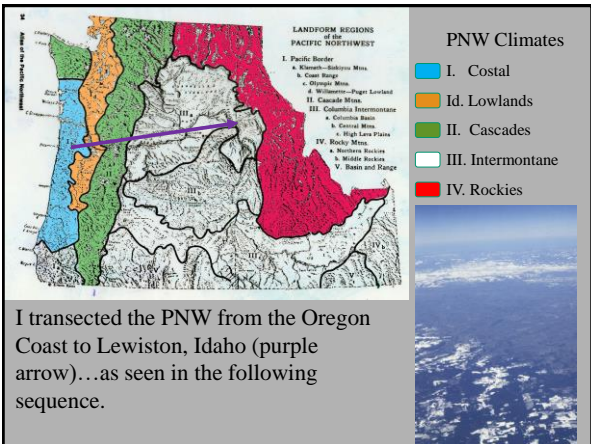


Climate of the Pacific Northwest

1





2



I transected the PNW from the Oregon Coast to Lewiston, Idaho (purple arrow)...as seen in the following sequence.

3

Costal Climate Zone
 Ocean influence year round
 moderates temperature
 Clouds, rain, fog






Heceta Head

40° W - 60° S
 60"-100"
 Snow? What's that?

4

Lowland Climate Zone
 Ocean influence lessened,
 nonetheless moderates temperature
 Clouds, rain, fog
 Continental influence in summer

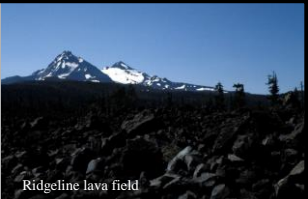



Eugene

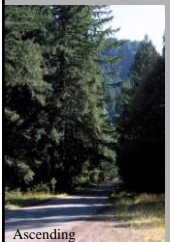

40° W - 65° S
 35"-45"
 Snow rare

5

Cascade Climate Zone
 Elevation is major influence
 Wide variety of microclimates
 Elevation and orientation key
 Similar to Lowlands in summer



Ridgeline lava field



Ascending

30° W - 65° S
 but varies widely
 70"-100"
 Snow up to 1,000"

6

Intermontane Climate Zone

Mountains major influence
 In Cascades' rain shadow
 Reduced moderation by ocean
 Columbia Gorge "leaks" ocean influence



Descending

30° W - 75° S
 10"-20"
 Snow 10-30"

7

Intermontane Climate Zone

Water bodies have local influence
 Minor ranges increase precipitation






30° W - 75° S
 10"-20"
 Snow 10-30"

8

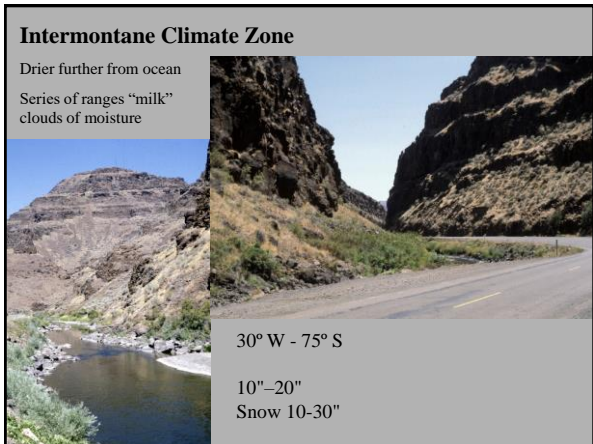
Intermontane Climate Zone

Water bodies have local influence
 Minor ranges increase precipitation

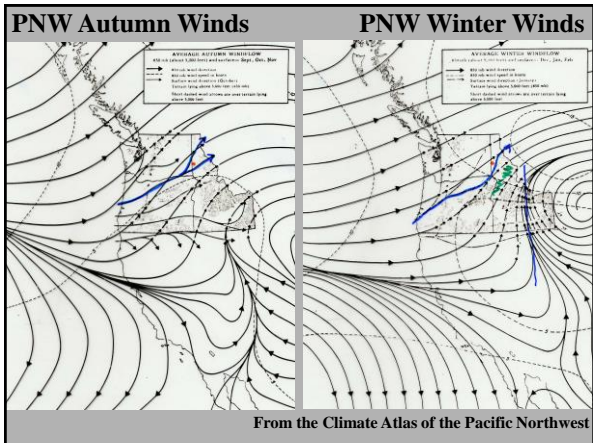



30° W - 75° S
 10"-20"
 Snow 10-30"

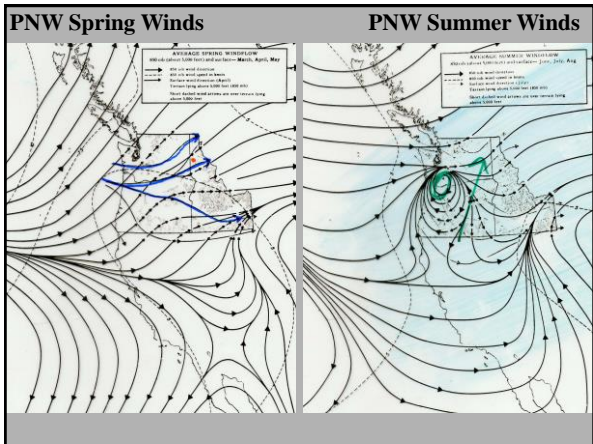
9



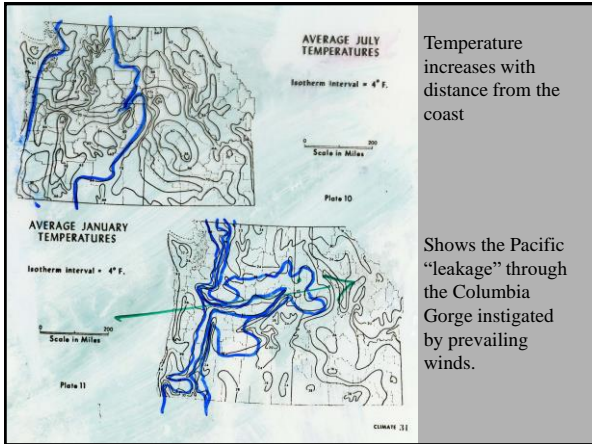
10



11



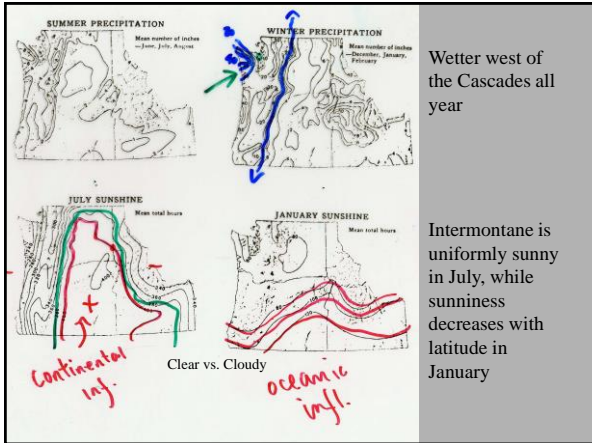
12



Temperature increases with distance from the coast

Shows the Pacific “leakage” through the Columbia Gorge instigated by prevailing winds.

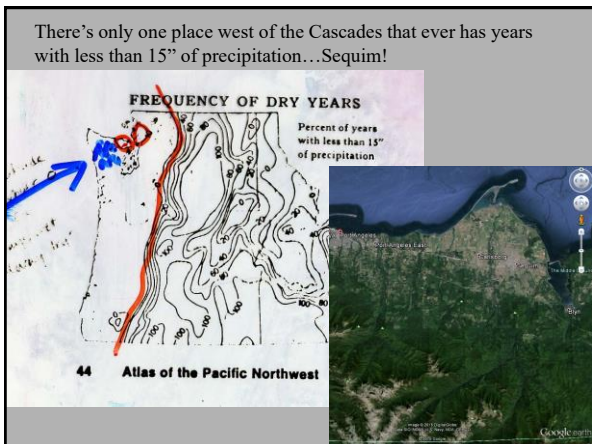
13



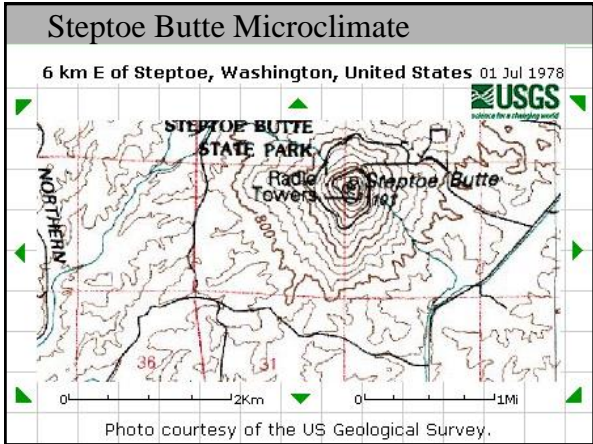
Wetter west of the Cascades all year

Intermontane is uniformly sunny in July, while sunniness decreases with latitude in January

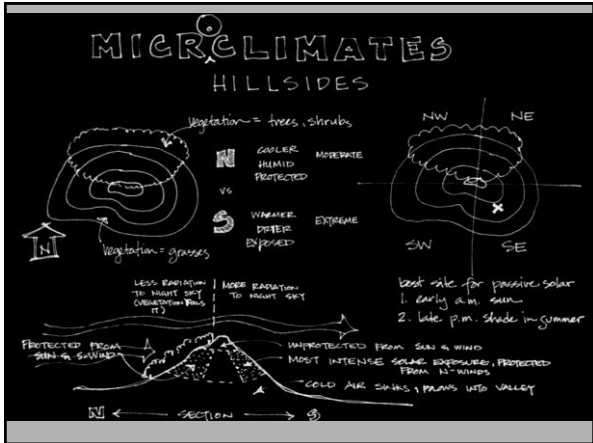
14



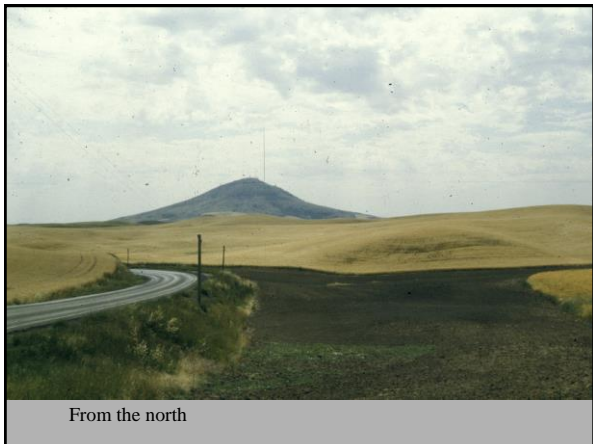
15



16



17



18



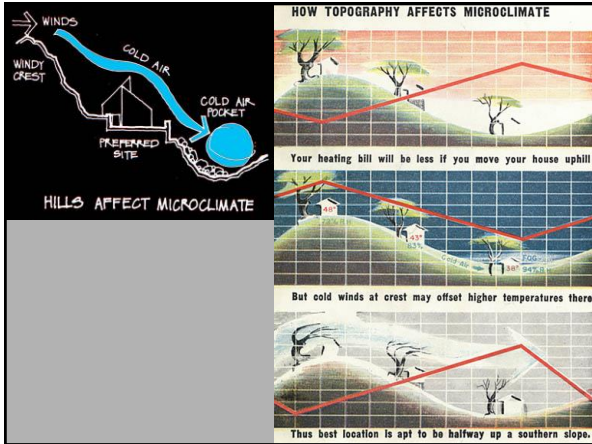
19



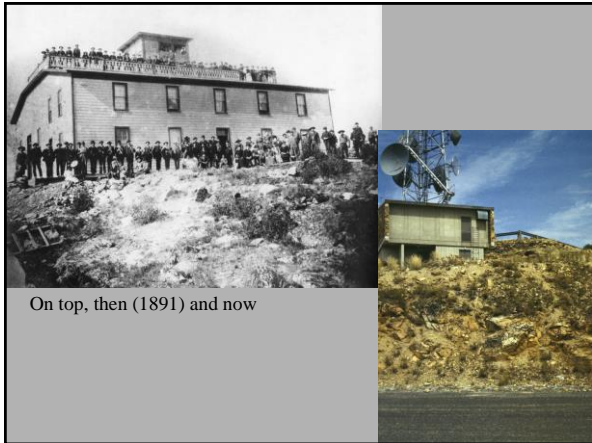
20



21

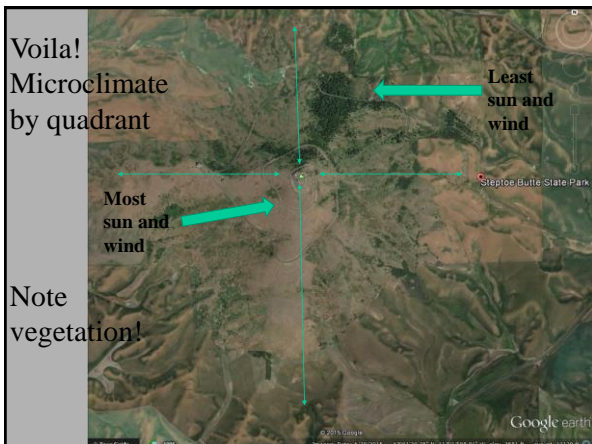


22



On top, then (1891) and now

23



24

Rose is Rose

Pat Brady and Don Wimmer

THE GAZEBO
NESTLED ON
THE BANKS OF
GARRISON'S
POND IS AN
IDEAL SPOT
FOR COUPLES
TO WITNESS A
BREATHTAKING
SUNSET.



THERE ARE
COUPLES
WHO NEVER
SEEM TO
CATCH THE
SUNSET.

Distributed by Universal Uclick, © 2014 UUP, Inc.

Stay tuned for the romance of Future Climates...
