

BedZED, Office Visits, and London Eye

09:45 Sketching session at BedZED.

Photography is not allowed until the tour begins

10:00 Tour BedZED starting at Bioregional Office

11:30 Visit ZED Factory (Bill Dunster's architecture office). 21 Sandmartin Way, Wallington SM6 7DF <<https://www.zedfactory.com/>>

15:30 Sketching session at Groupwork.

16:00 Visit Groupwork with Amin Taha and/or Dominic Kacinskas. 15A Clerkenwell Close, London EC1R 0AA. <<http://groupwork.uk.com/#>>



GETTING THERE.

• To BedZED

Tube. King's Cross Victoria Line to Victoria.

Train. 09:11 from London Victoria to Hackbridge. Arrive 09:36. Anytime day return £6.15 with rail card.

Walk. From Hackbridge Station north on London Road about 10 minutes to BedZED.

• To Groupwork

Train. Any train from Hackenbridge to London Victoria (your return ticket covers any option).

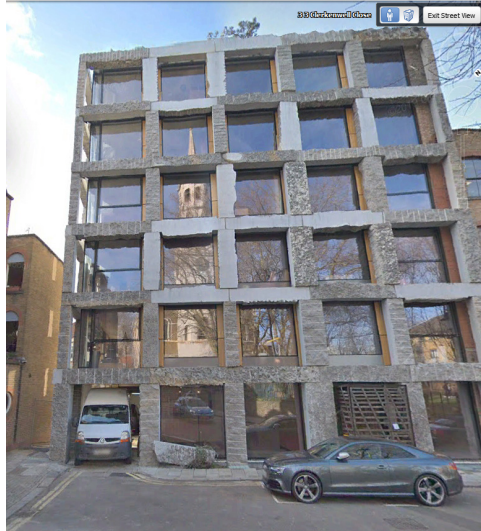
Tube. Victoria Victoria Line to King's Cross, change to Circle/Metropolitan/Hammersmith & City to Farringdon.

Walk. Leave the station, go left on Cowcross, then left on Turnmill Street/Farringdon Lane to Clerkenwell Green, then left on Clerkenwell Close to Groupwork at 15A.

• To the London Eye

Tube. King's Cross Circle Line east to Embankment.

Walk. Cross the North Hungerford pedestrian bridge (aka Golden Jubilee Bridge) to the Queen's Walk along the Thames. Go south a block to the London Eye and join the queue.



Groupwork office 15A Clerkenwell Close

19:00 Queue for the London Eye (booked, bring your ticket).

19:30 Ride the London Eye!

