

www.architecture.com



Born: 1931

Education: Cambridge, Architectural Association, UC Berkeley

Practice: Edward Cullinan Architects

Professor: University of Nottingham

Edward Cullinan

Cambridge University

Architectural research arm

founded by Professor Sir Leslie Martin in 1967 as

Centre for Land Use and Built Form Studies (and formally became The Martin Centre in 1974

Energy Efficient Cities initiative

address energy demand reduction and environmental impact in cities, by research in building and transport technologies, district power systems, and urban planning.

2008-2012



www.gogeo.ac.uk

Architectural Association School of Architecture

Curriculum

Landscape Urbanism Housing and Urbanism, Sustainable Environmental Design, Histories and Theories
Emergent Technologies, environmental access



eduwae.com

UC Berkeley

Climate Action Plan

reduce its greenhouse gas emissions by one-third

2009



swe.berkeley.edu

Archaeolink Visitor Center (1998)

Oyne, Aberdeenshire



http://www.e-architect.co.uk/aberdeen/archaeolink_visitor_centre.htm

Docklands Campus, University of East London (1999)

Royal Docks, London

10 hectare (24.7 acre)

Location

Materiality



<http://www.uel.ac.uk/campuses/>



Docklands Campus

Key

- Residential Offices
- Main Lecture Theatre
- Student Services
- Cash Point
- Cashiers Office
- Credit Control
- Outdoor GYM

Places to eat

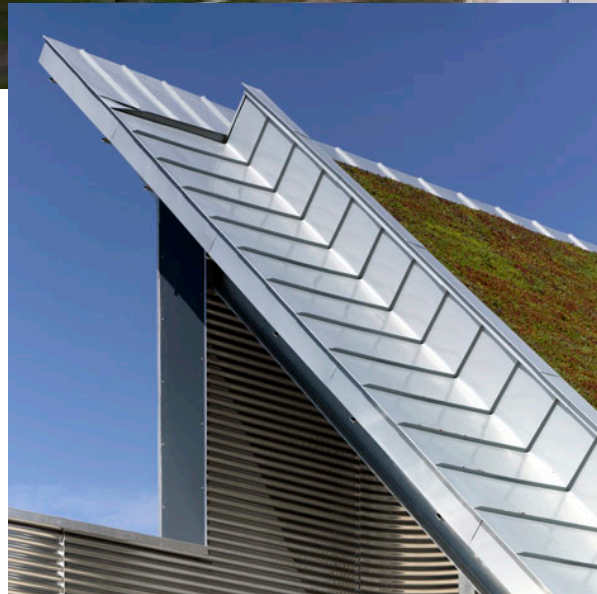
- Munch Café
- Café Culture
- The Edge
- Bite
- Oscars Café
- Knowledge Dock Café

School Helpdesks

- School of Architecture, Computing and Engineering
- School of Law and Social Sciences
- School of Arts and Digital Industries
- Royal Docks Business School
- Combined Honours

BFI Master Film Store (2011)

Warwickshire



<http://www.dezeen.com/2011/09/12/bfi-master-film-store-by-edward-cullinan/>

Used to store British Film Institute's master film collection of nitrate and acetate film

Internal environment maintained at -5C and 35% humidity

BREEAM

Conclusion

There is no question that Edward Cullinan is a very good and successful architect. Considering the history of architecture, it takes a long time for something to be perfected, this included sustainable design. It is a fairly new concept and is still being improved because there are always some questionable factors when it comes to designing green and not all issues can be resolved.

Even when the knowledge of sustainable design is present, funding is a major factor that determines whether or not the design is actually carried out. If the funds are not there, is an architect going to pass up the opportunity for a job? These days, everybody should have knowledge of designing green architecture without being considered solely green designers.