



Alternative Serpentine Pavilion

Education for an Infinite Future



Education for an Infinite Future

The Serpentine Pavilion offers a world spotlight for any architectural team. Therefore, we will take this opportunity to educate the world in practices and benefits of sustainable architecture.

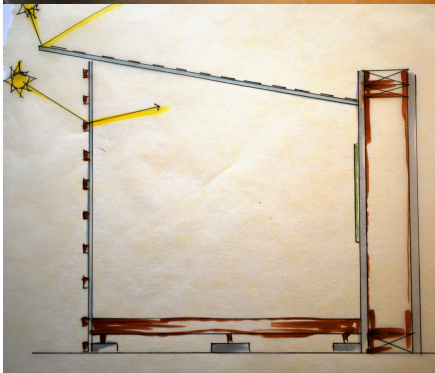
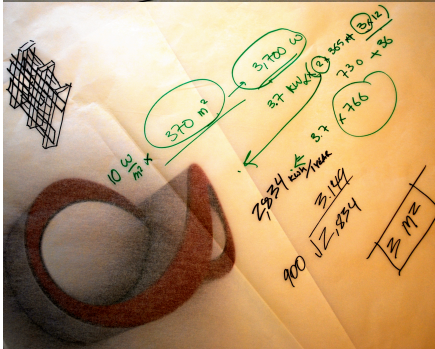
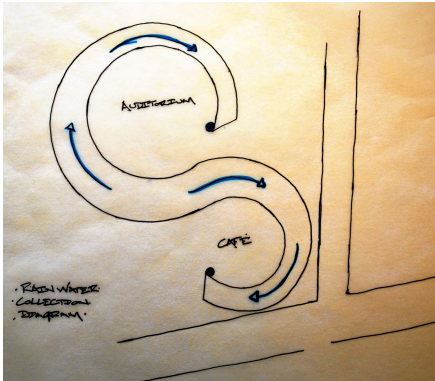


This Gallery, exists as an educational tool in opening the minds of the general public to new concepts and ideas that will help us stray from dependence on resource depleting practices.



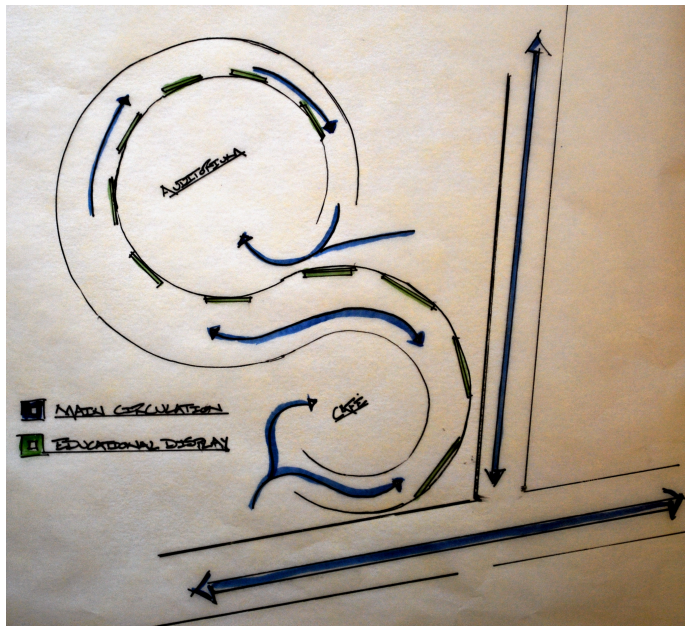
The building itself can act as a physical model of environmentally friendly practices while it's circulation explains how these practices are carried out.

Water Catchment, Lighting, and Energy Systems



- The roof covering the circulation space will be constructed of integrated photovoltaic panels. This will help to provide energy for both lighting and café needs.
- The PVs act as a rainwater 'slide' to collect for future use in the garden plots along the south side of the pavilion.
- The pavilion only requires 3 meters square of PVs to run all lighting needs. The extra provided by the PVs will help with the needs of the café and hopefully provide extra to feed back into the grid.
- The glass wall of the circulation path provides day light to the space while the horizontal wood slats provide shading to reduce unwanted solar gain.

Infinity Sign as Circulation, Educational Tool, and Acoustic Block



- The infinity sign acts as the circulation path from the café to the amphitheatre space.
- The path will be lined with informative displays about the sustainable features of the building and how they perform.
- The form of the path also blocks the sound from transmitting between the café and the amphitheatre.

Regenerative Based Checklist - SBSE

Regeneration-Based Checklist for Design and Construction						
Project:						
degeneration		sustainability			regeneration	
	-100 always	-75 usually	-50 sometimes	0 balances	25 a bit	50 sometimes
					75 usually	100 always
the site	pollutes air					
	pollutes water					
	wastes rainwater					
	consumes food					
	destroys rich soil					
	dumps wastes unused					
	destroys wildlife habitat					
	imports energy					
	requires fuel-powered transportation					
	intensifies local weather					
	excludes daylight					
	uses mechanical heating					
	uses mechanical cooling					
	needs cleaning and repair					
the building	produces human discomfort					
	uses fuel-powered circulation					
	pollutes indoor air					
	is built of virgin materials					
	cannot be recycled					
	serves as an icon for the apocalypse					
	is a bad neighbor					
	is ugly					
	cleans air					
	cleans water					
	stores rainwater					
	produces food					
	creates rich soil					
	consumes wastes					
provides wildlife habitat						
exports energy						
requires human-powered transportation						
moderates local weather						
uses daylight						
uses passive heating						
uses passive cooling						
maintains itself						
provides human comfort						
uses human-powered circulation						
creates pure indoor air						
is built of recycled materials						
can be recycled						
serves as an icon for regeneration						
is a good neighbor						
is beautiful						
negative score		positive score				
2200 possible		2200 possible				
- 25		950				
final score:		925				

- All cups, plates and utensils from the café will be compostable, along with any food waste.
- Food that is grown on-site will be used for items on the menu. Food that can not be grown on-site will be brought in from local businesses.
- The lighting as well as the espresso machine will all be high performance equipment to reduce the electric loads. The kitchen oven will consist of a brick oven made of reused local materials.
- The entire structure will be ‘recycled’ in a way when it is moved to another site after its time as the Serpentine Pavilion. In addition, all joints on the structure will be designed for deconstruction and have the potential to be recycled into new products.

Pavilion Café Menu

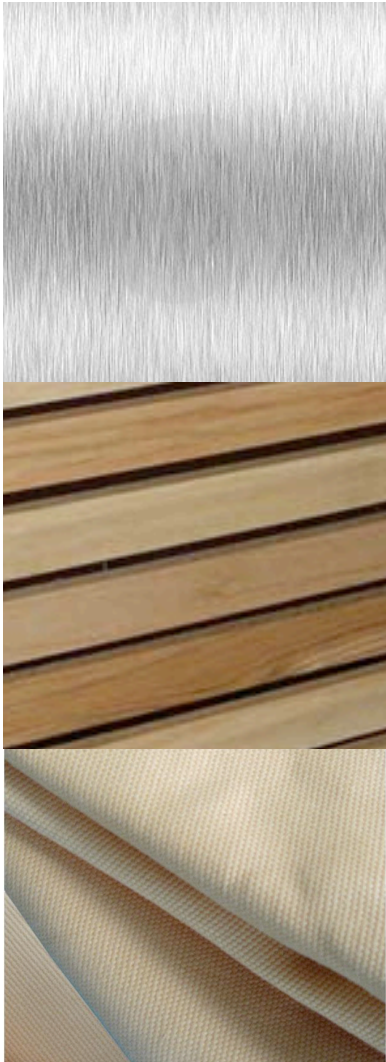
■ Food:

- Pizza
- Calzone
- Sandwich
- Salad
- Fresh Fruit
- Fresh Cookies

■ Drinks:

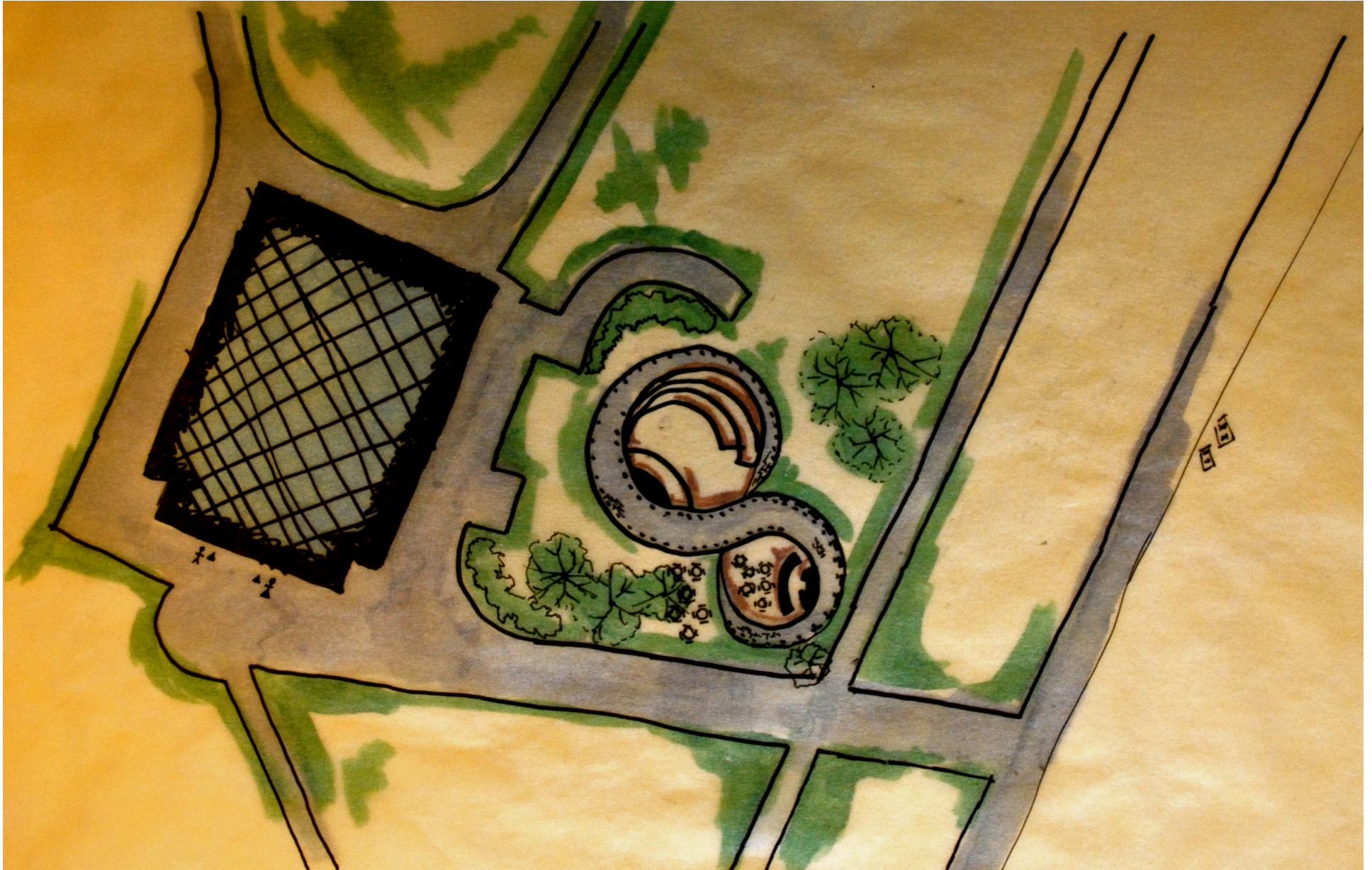
- Coffee
- Tea
- Tap Water
- Wine

Pavilion Materials

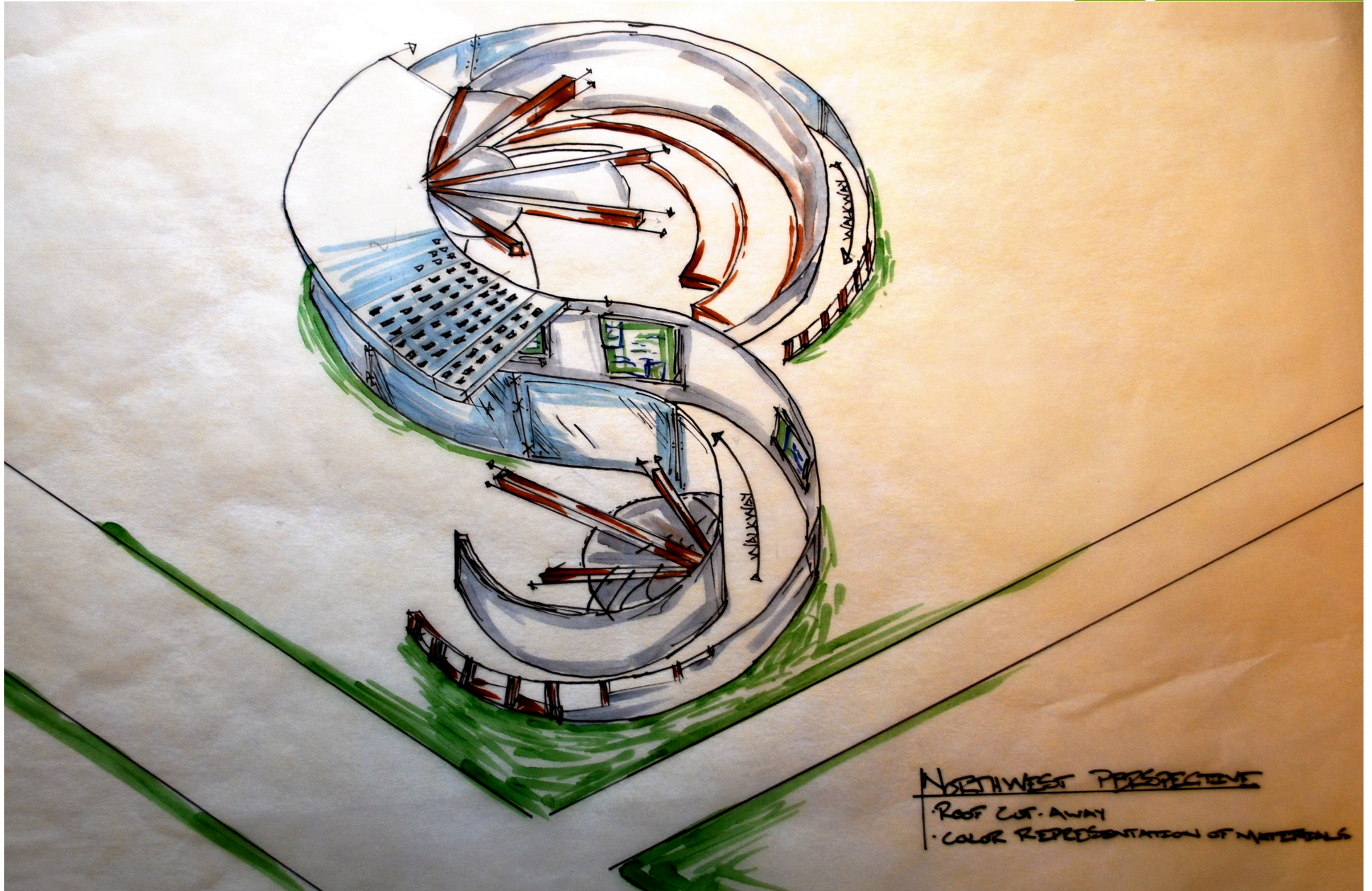


- The walls around the circulation space will be constructed of recycled aluminum and glass. In the amphitheatre and along the southern side of the glass wall there would be horizontal wood slats to mitigate both light and sound.
- The benches and structural elements of the pavilion will be wood framed construction. The wood will be a locally acquired and reused material.
- The roof structure over the café and amphitheatre areas will be covered with a light colored water resistant canvas.

Floor + Site Plan



Perspective Cut-Away





Thank You

Jessica Shoemaker

Daniel Clift

Satara Rose-Ewen

John Neary