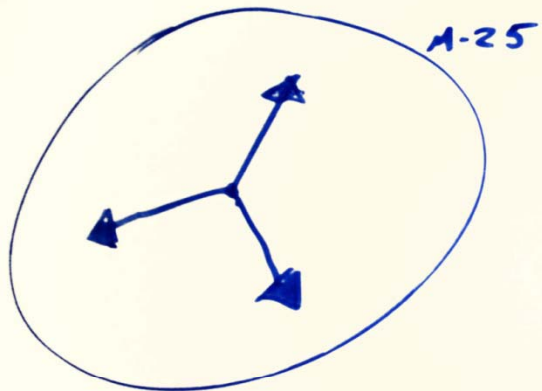
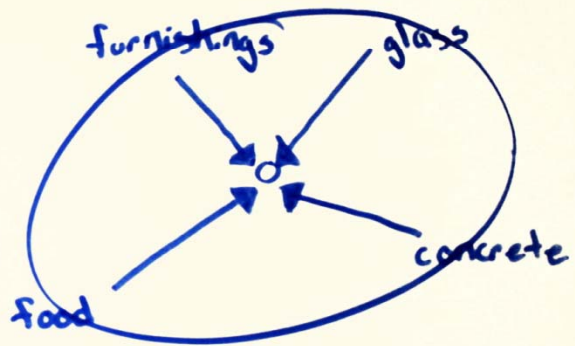


How
do you
make
ART
sustainable?

Holly Colvin , Corey Pataky , Greg Croft , and Laura Martin
working at Grimshaw Architects

Process

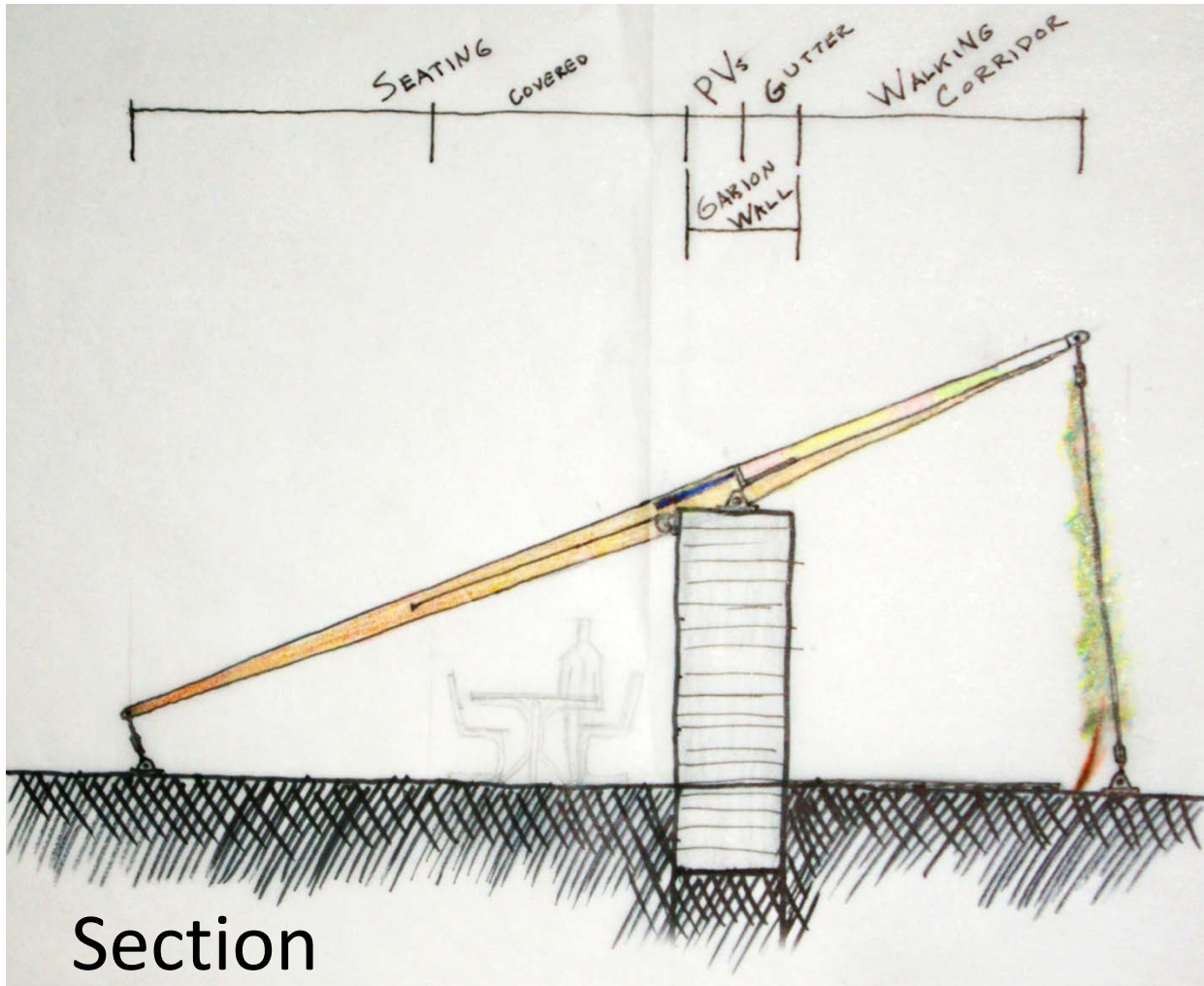


BIG PICTURE.

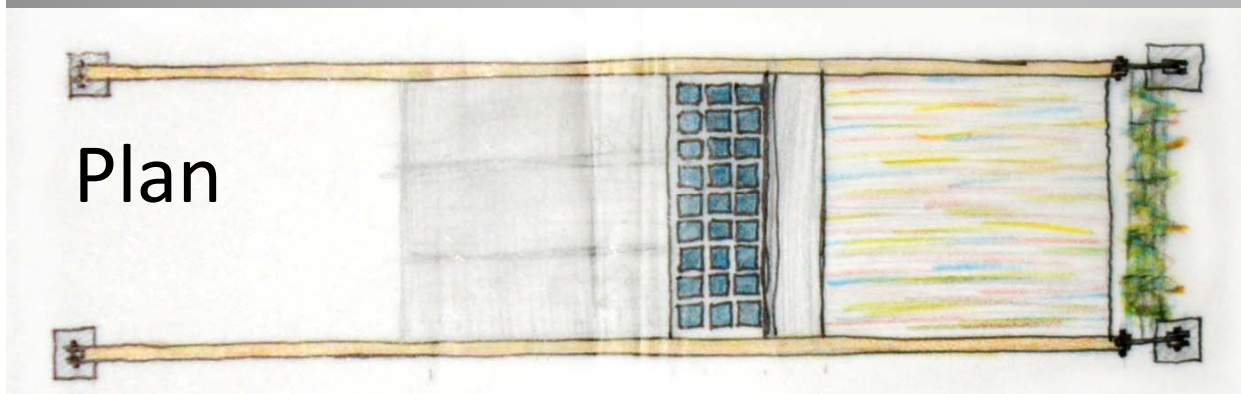
- ENCLOSED / OPEN / FILTER
- PERSONAL ENVIRONMENTAL FOOTPRINT.
- SOURCING GLOBAL MATERIALS.
 - ↳ FOOD SERVICES CYCLE
 - ↳ CHAIR TO CHAIR DIAGRAM
- WITHIN THE PARK / LONDON / M25.
- INSTALLATIONS / ELEMENTS OF THE PAULION THAT ARE DEMONSTRATIVE
 - BIKE GENERATION OF ENERGY
 - COLLECTION OF WATER
 - ENERGY HARVESTING
- RELATIONSHIP TO PAULION / SERPENTINE GALLERY.
- WHAT HAPPENS TO THE PAULION NEXT?
 - PARTS / DISTRIBUTED BACK ACROSS LONDON?
- ENERGY GENERATION STRATEGIES
- WATER USE / RECYCLING

Goals

- Tread lightly on site
- Source local materials (within M25)
- Disperse elements back into community
- Utilize repurposed materials



Section

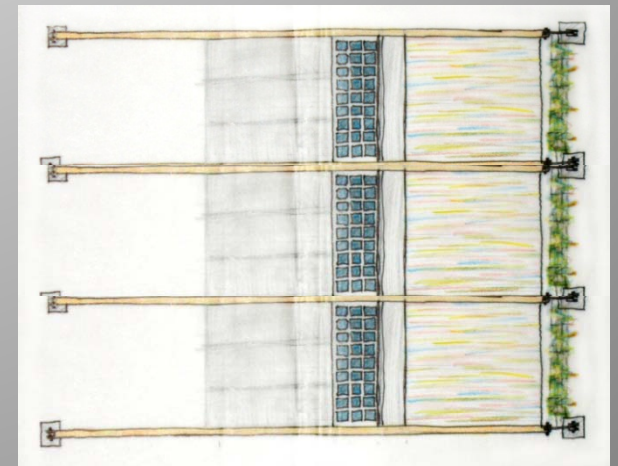


Plan

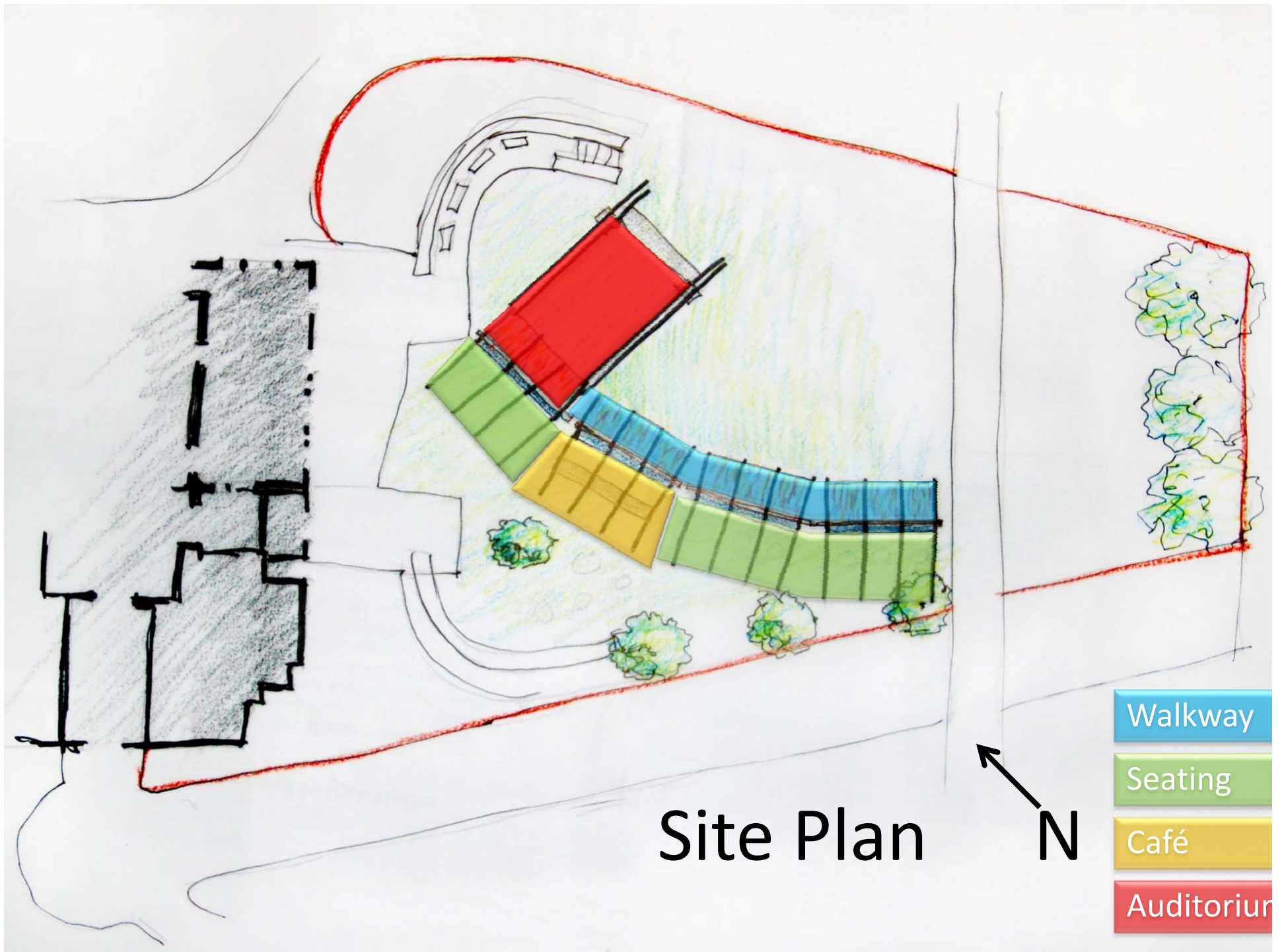
Structural System

Sustainable Features

- PV panels
- Passive heating/cooling
- Thermal heating panels

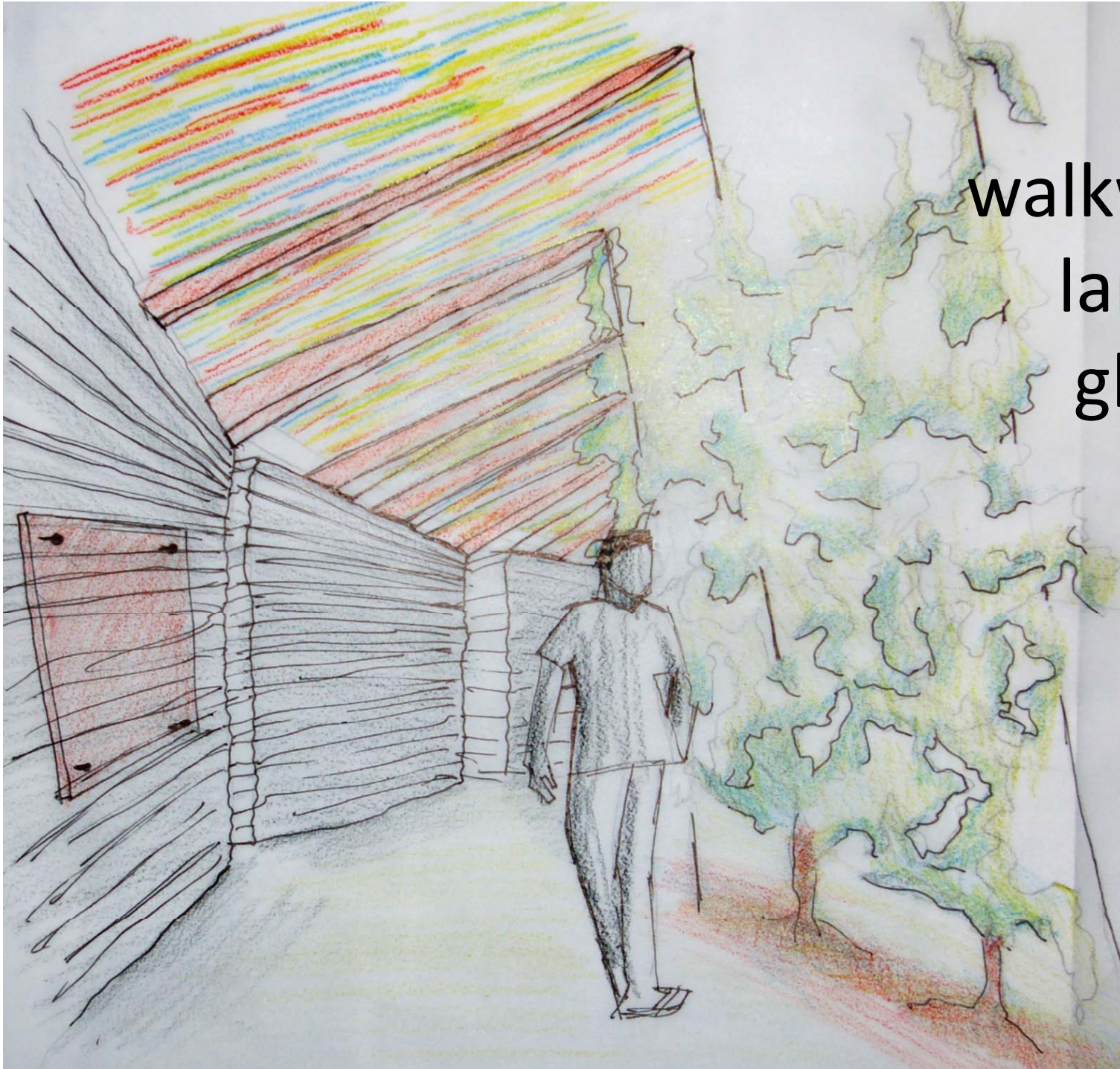


One Unit



Promenade

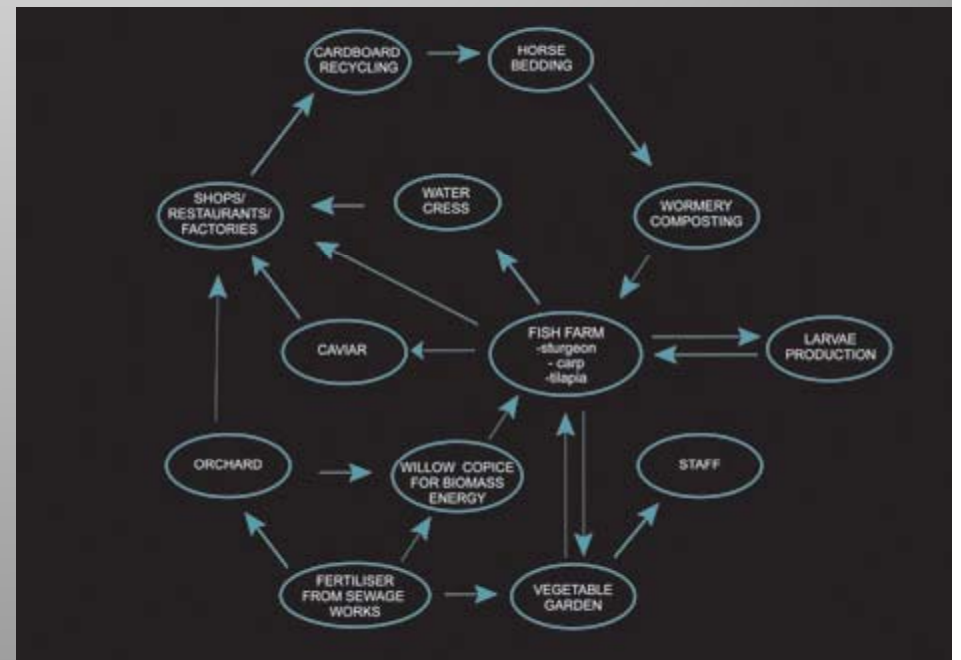
- Dry stacked recycled concrete wall with polished finish harvested from existing pavilion
- Local end cut glass creates the overhang above walkway
- Solar pv integrated into roof system
- Ground covered with reused metal grating



View of
walkway and
laminated
glass roof

Café

- Locally sourced menu items (within M25)
- Compostable packaging
- Minimize Preparation and cold storage
- Compost bin

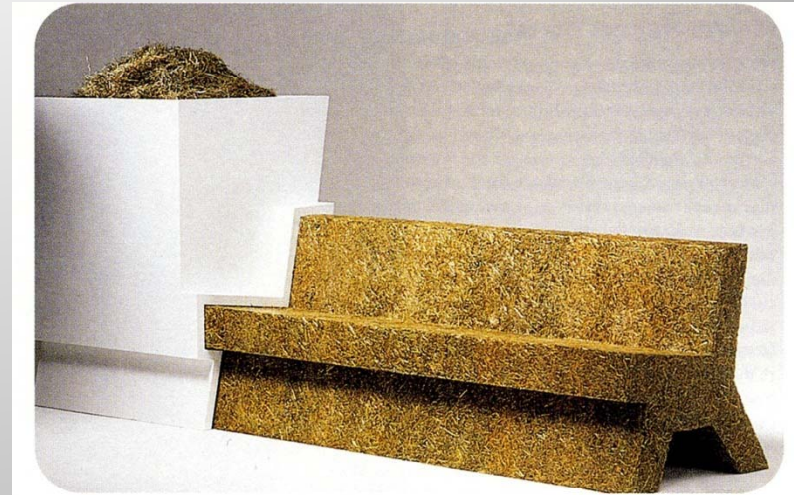


View of Café and roof system

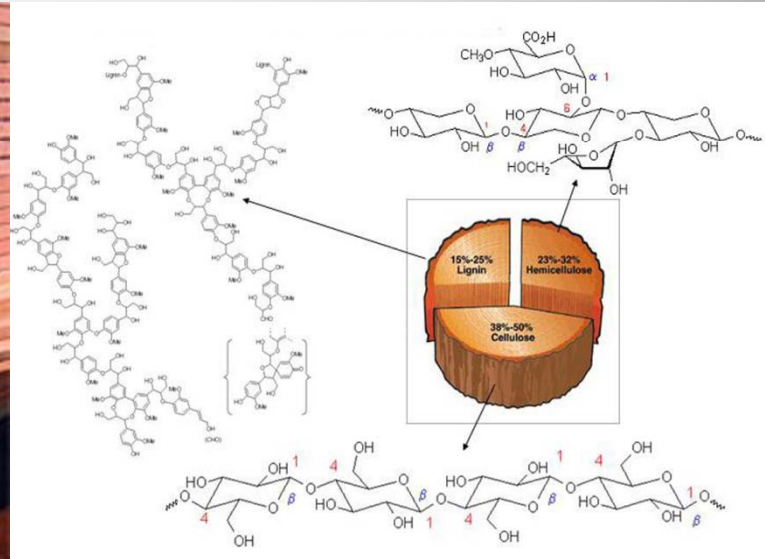


Furniture

- High pressure extrusion containers generate benches of dried grass, leaves and woody prunings
- Durability and longevity of the seating depend on the extent of use and the inherent strength of the compressed material
- Use of waste material
- Renewable sources
- Compostable



Furniture

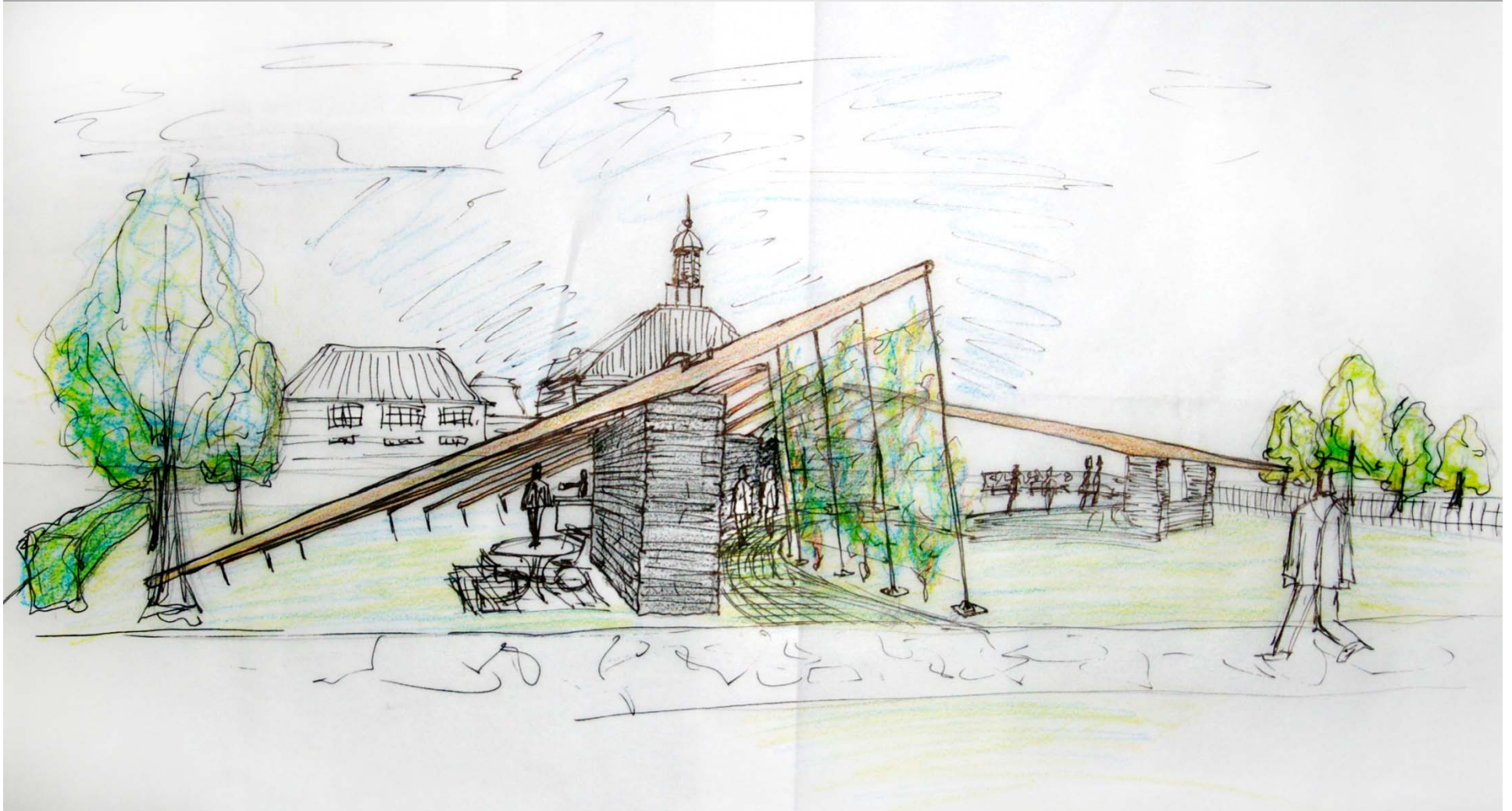


- 50 Million tonnes of lignin waste from paper
- Combined with natural cellulose
- Granulated and injection moulded
- Complex wood structures replacing plastics

Auditorium Space

- Sloped floor for visibility
- Sloped floor defines edge to the Auditorium and creates a backdrop to a casual seating space
- Retractable roof awning over auditorium provides protection from the elements

View of Entrance



Conclusion

How did we make art sustainable?

- Through sourcing local materials. Innovatively reusing products. Taking products from within the M-25 to create an art exhibition for the Serpentine Gallery that through its use informs people about the environmental impact of the built environment. Redistributable into the community from which it came in a different and better way.

We would like to **thank** everyone who has made our stay here enjoyable and informative. A special thanks to **Andrew** and the **Grimshaw** team for their support and resources in this project.

Serpentine Pavilion

