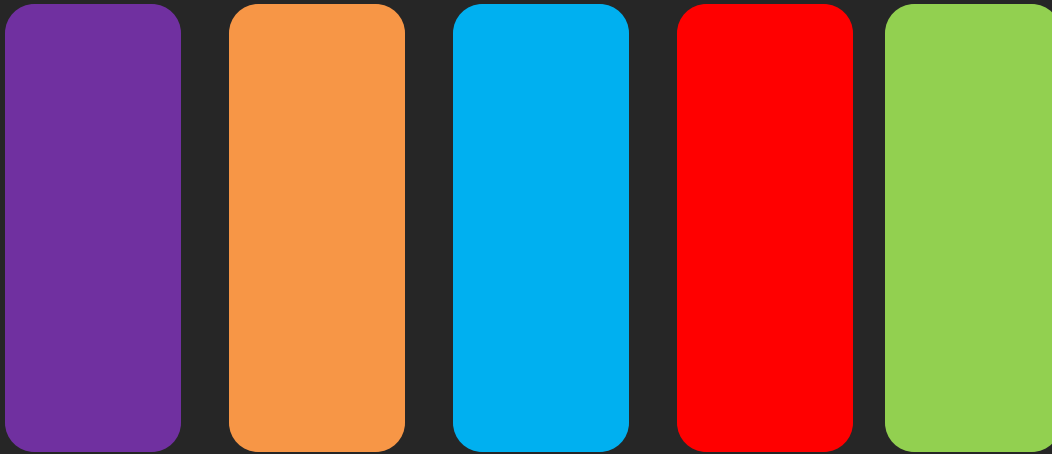




# FLUCTUATION

a sustainably derived  
serpentine pavilion

molly   luke   caralina   rob



Problems &  
Solutions

**DRIVERS OF CHANGE**

**MITIGATE V. ADAPT**

**DEFORESTATION**

**PERSONAL CARBON**

**CARBON FINANCE**

**PASSIVE DESIGN**

self sufficiency\*

micro generation

photovoltaic

intelligent buildings

demand management

distribution efficiency\*

new product life\*

water consciousness\*

## **local recycling**

where do the building materials come from?

## **carbon footprint**

how did you get here?

## **passive design**

is passive design enough?

does a temporary pavilion need to create its own energy?

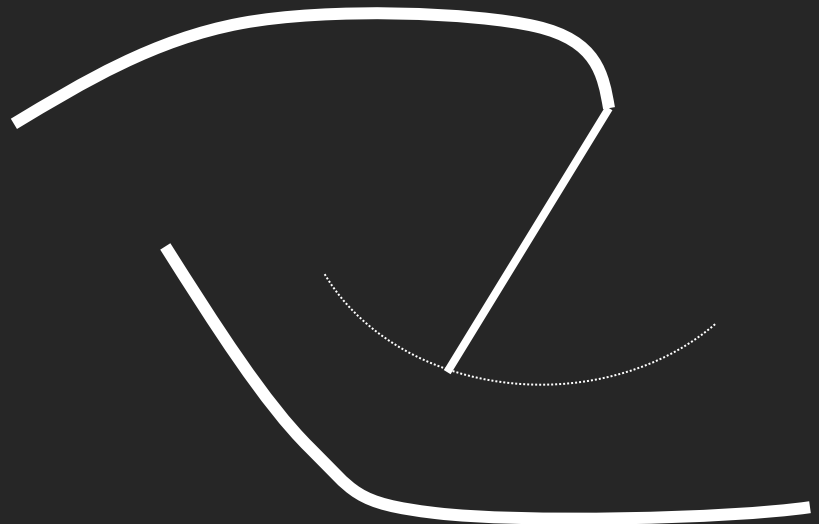
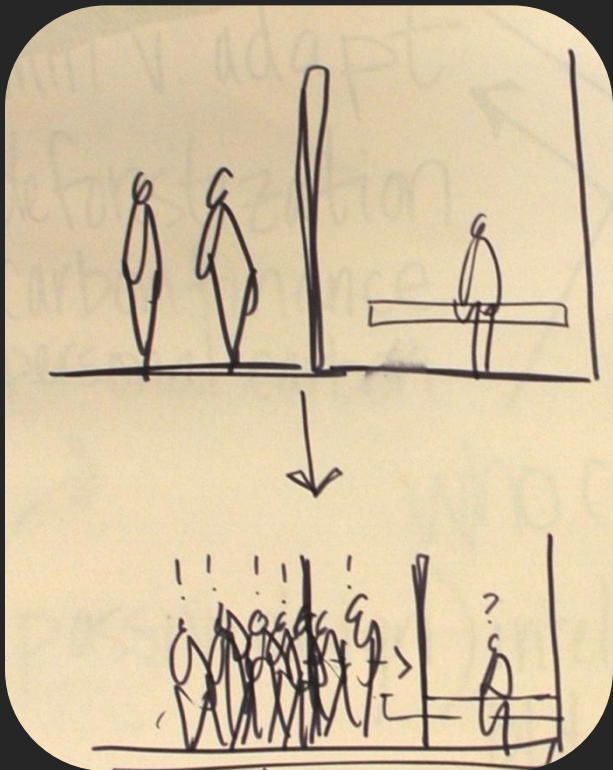
how comfortable is passive design?

# **DRIVERS OF CHANGE**

who's taking your space?

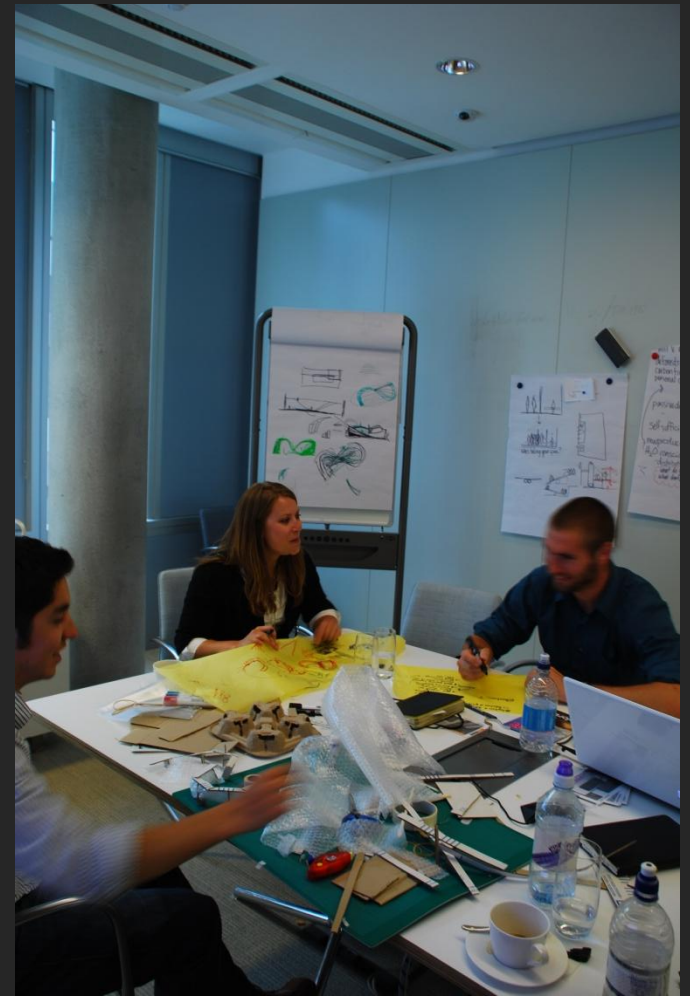
**MITIGATE V. ADAPT**

**“a fluctuation of space that responds to user’s actions and reactions.”**



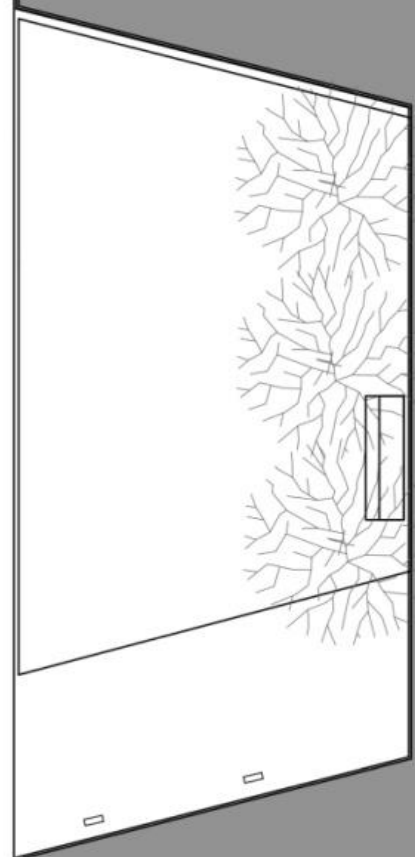
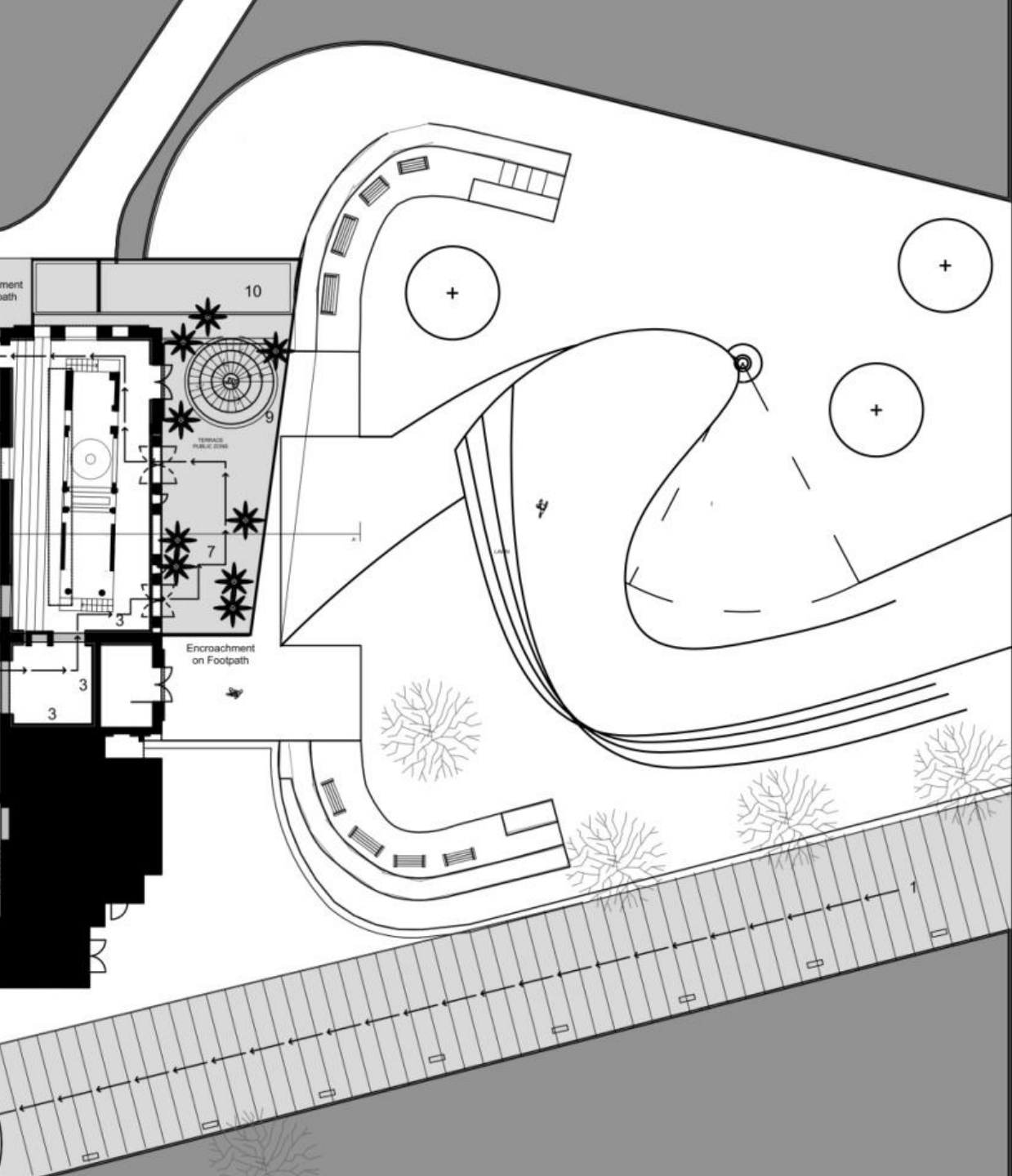


**WHO'S DOING YOUR WORK?**





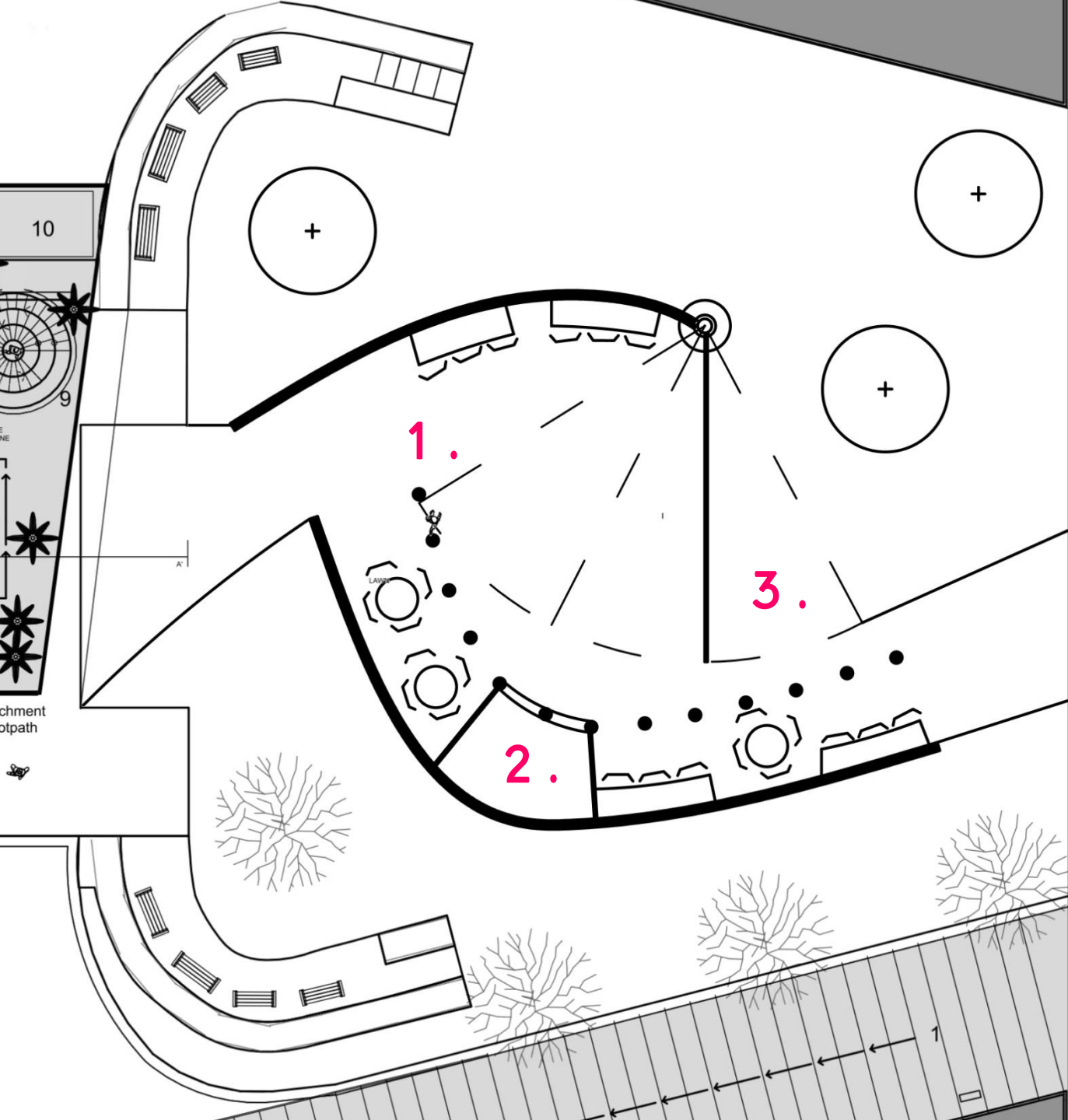




**LEGEND**

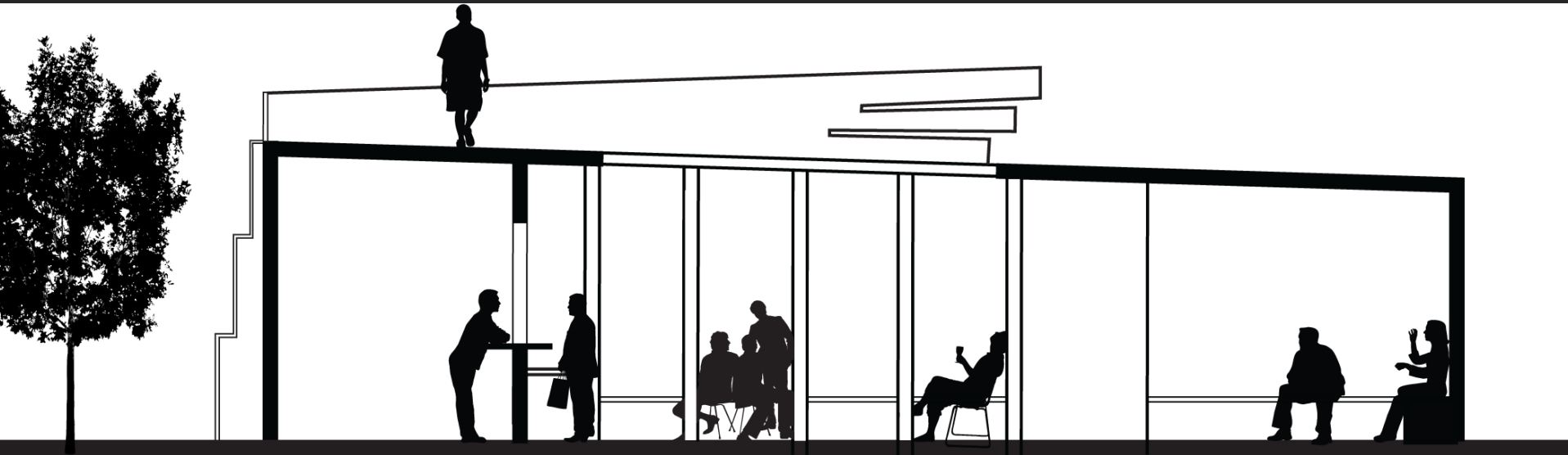
- 1. Festival street
- 2. Arrival hall
- 3. Displays
- 4. Images, sculptures
- 5. Platform
- 6. shrine
- 7. Banana garden
- 8. Chai shop
- 9. Stepwell (?)
- 10. Waterbody
- 11. Indian sitting
- 12. Court

**site plan**

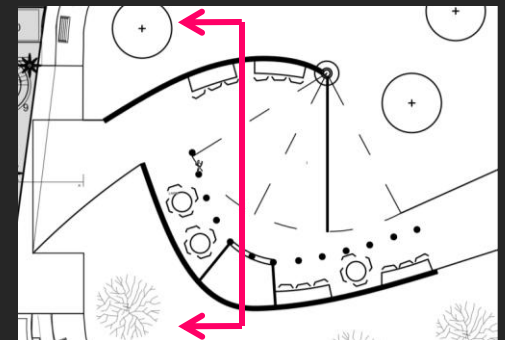


- 1. adapt
- 2. kitchen
- 3. mitigate

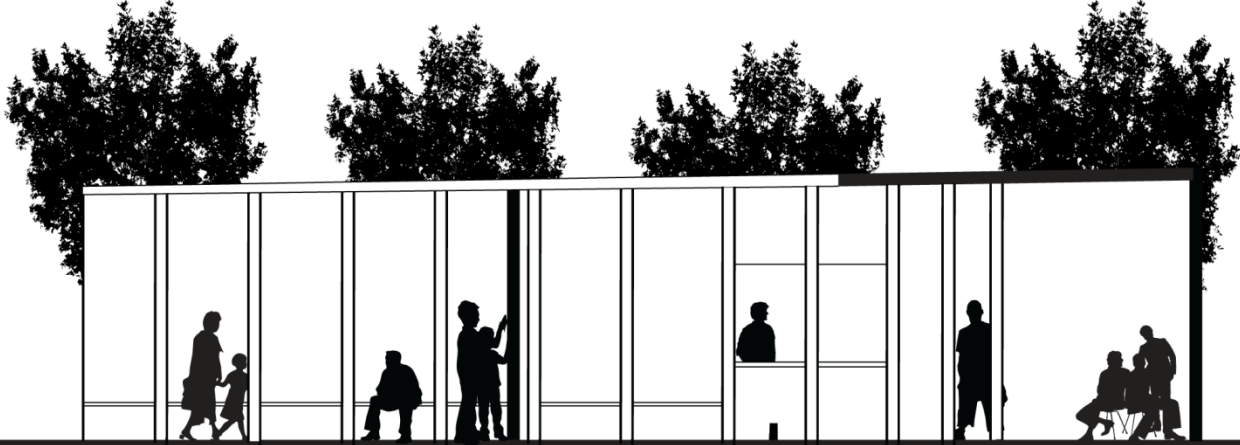
# floor plan



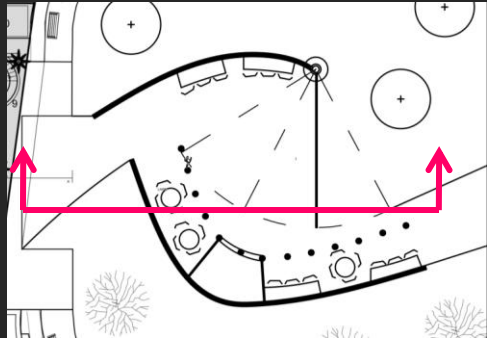
# SECTION A-A

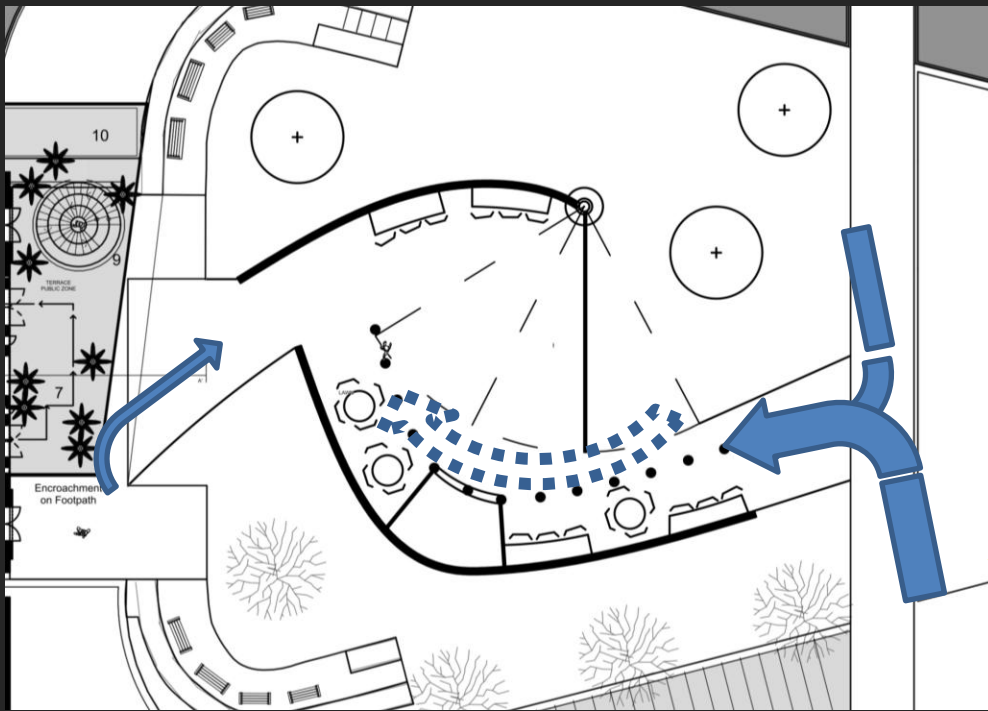


Serpentine Ga



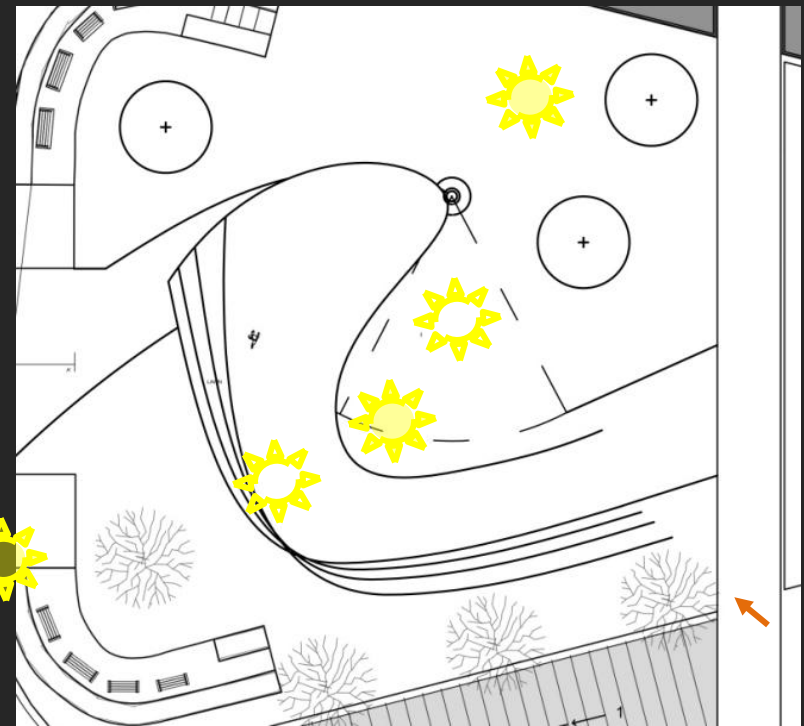
# SECTION B-B





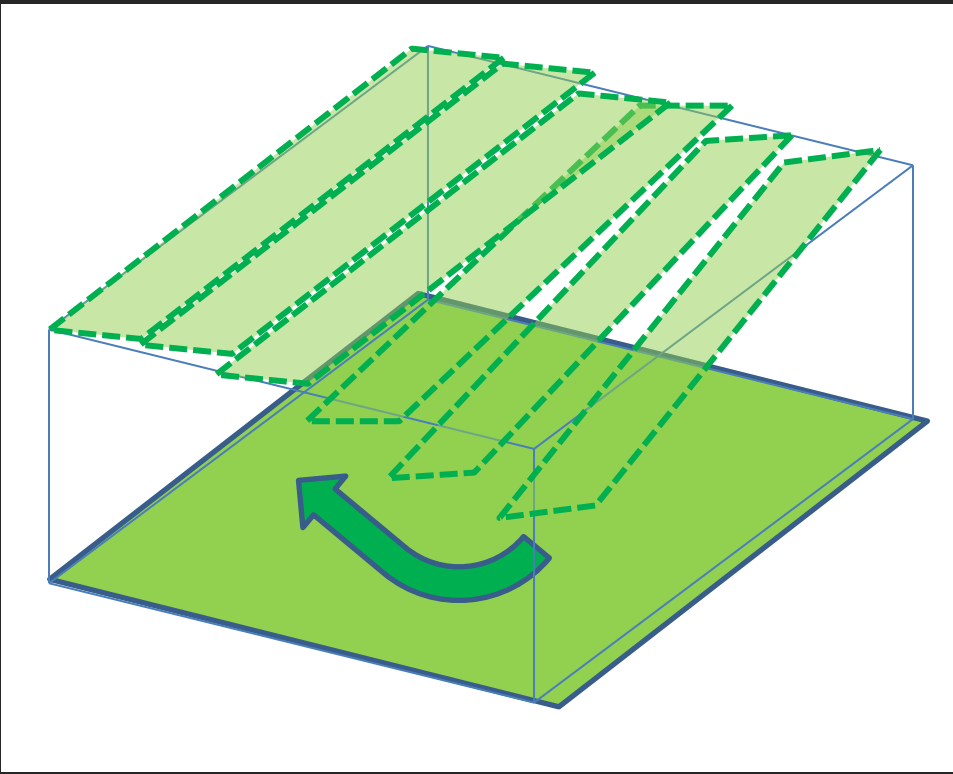
## circulation

adaptation is accessed through the quieter areas of the gallery patio. mitigation through the main path along the road. both meet along side the kitchen area and rotating wall.



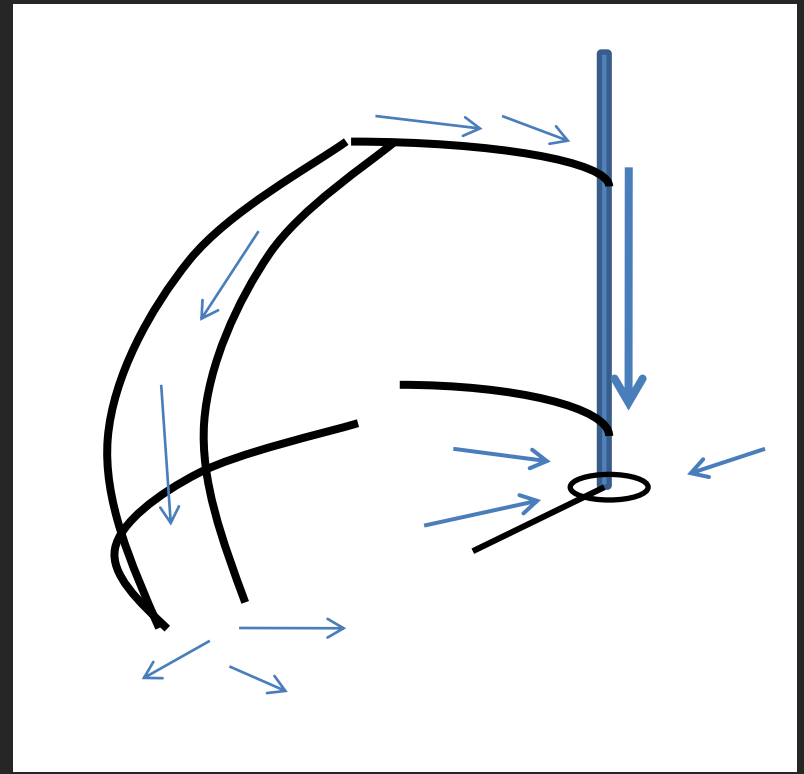
## sun

the inhabitable roof sweeps the southeaster space. opening for southern solar gain. the roof covers the western side for a protected and quieter environment.



## SITE REUSE

the sod replaced by the building's footprint is imported as the roof covering. this minimizes ground cover replacement between pavilions & utilizes a very local material.



## WATER

rainwater is collected and filtered through the sod roof and collection pipe along the pivoting wall hinge. a catch basin, under the hinge, displays the water collection system.



SKINNY

mitigation







Recycled materials/ sustainably harvested wood.

Resources retrieved from the site or a local source.

A temporary pavilion may not be appropriate for micro generation or photovoltaic's.

Simpler education, like highlighting water collection & material use is more practical.

Individual carbon credits are more effective than a mass initiative.

# DRIVERS OF CHANGE