

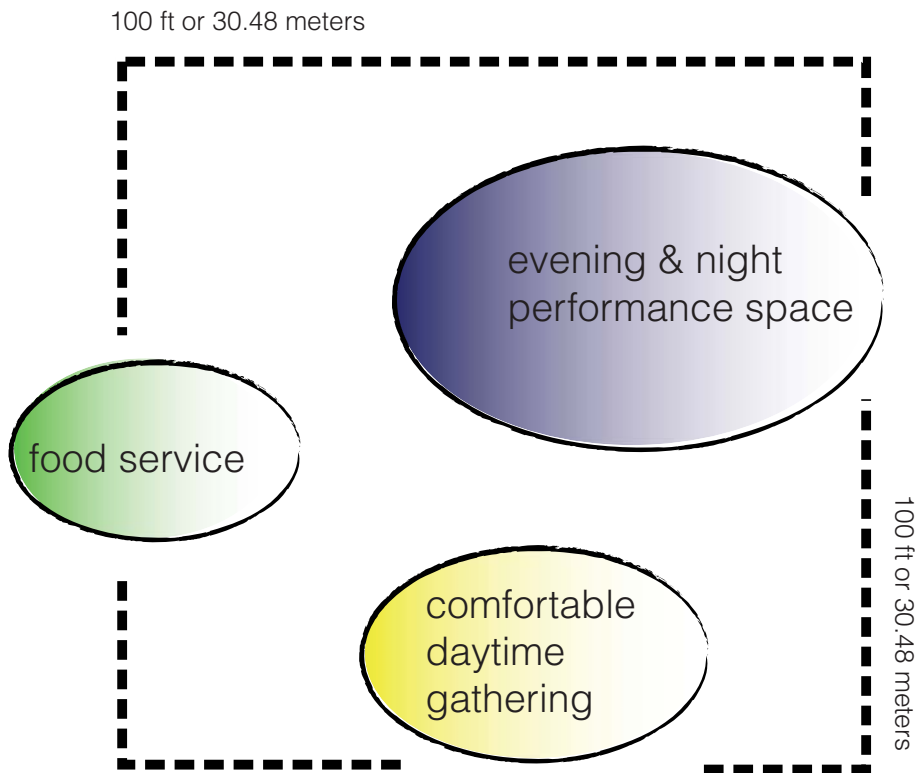
THE SERPENTINE
GALLERY PAVILION
TEAM EUSTON DESIGN PROPOSAL

“THE TABLE TOP”





SITE ANALYSIS



PROGRAM



Original pavilion site is overused and worn out after thirteen years of repeated use.



CONCEPT/PROBLEM STATEMENT

- Green & low carbon construction
- Low Carbon Cafe
- Sustainable & green education spaces through user interaction
- Demountable design
- Maximize height for incredible views
- Future use
- Modular - ease of relocation



DESIGN STRATEGIES

Rhizotron & Xstrata Treetop Walkway

Designed by Marks Barfield Architects

18 metres (59ft) up in the air

200m long string of twelve modular walkway trusses at eighteen metres high

Pre-fabricated off-site

Classroom platform can accommodate a group of up to 35



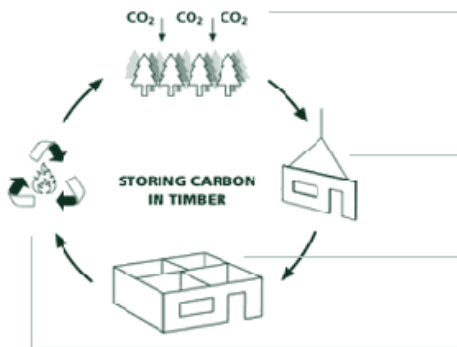
PRECEDENT



London Based
Company

Local Materials

Modular Timber
Construction



Lignatur Box Element

Modular hollow timber box sections for flooring applications

Thickness £160 / 240 / 320mm
Maximum width £200mm
Maximum length £12,000 mm

Timber species £Spruce
Finish quality £Standard / Visual



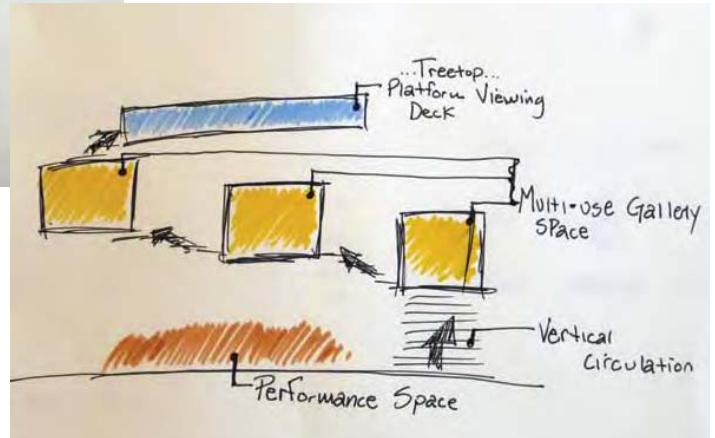
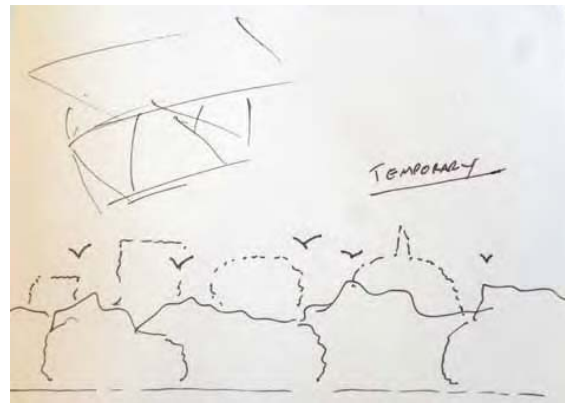
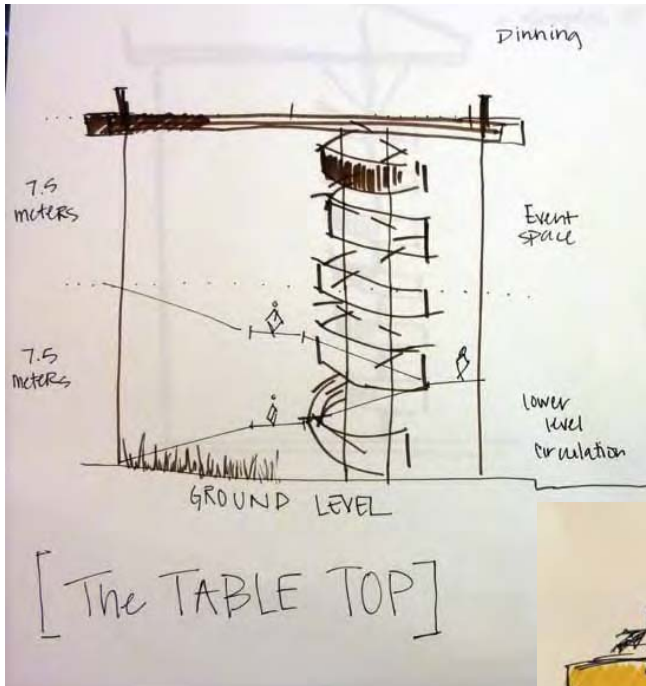
StoraEnso CLT

CLT solid wood elements consist of boards which are edge-glued and cross-laminated together to form large panels suitable for wall floor and roof applications. StoraEnso CLT panels have closed faces as standard and are therefore ideally suited for the British climate.

Thickness £57 - 297 mm
Maximum width £2,950 mm
Maximum length £16,000 mm

Timber species £Spruce
Finish quality £Non-visual / Visual

PRECEDENT



PROCESS



POTENTIAL SITES



Slatted module siding

Platform gallery boxes able to orient towards different site views

Platform gallery boxes contain spaces for a variety of activities

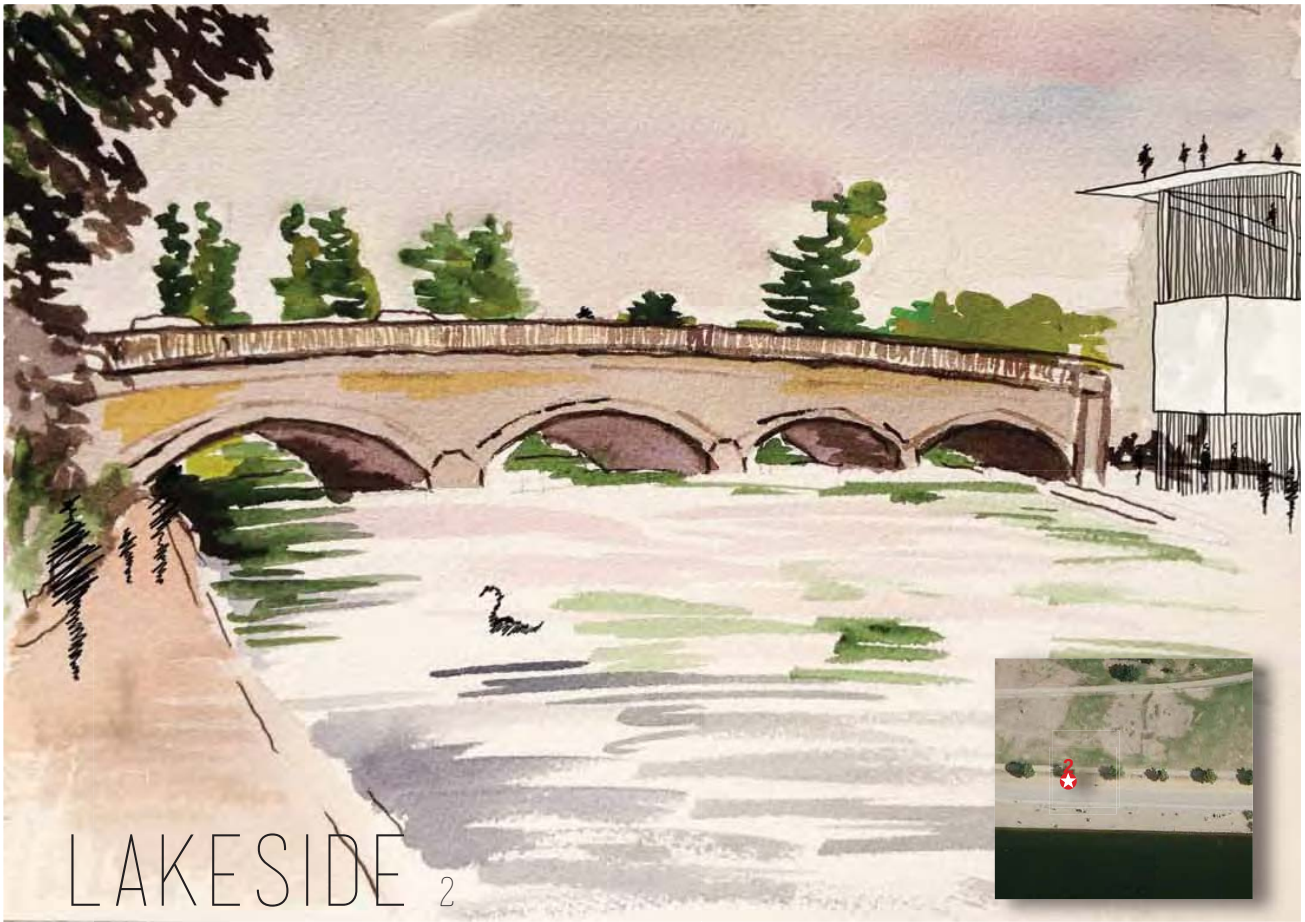




WHEATFIELD



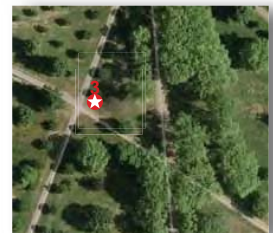
TRIANGLE 1



LAKESIDE 2



AMIDST TREES 3





REUSE

Structure is reusable

Current site is given chance to regenerate

Entirely new view of London's skyline

Encouraging a future departure from current serpentine pavilion space



CONCLUSION

BDP.

Helen, Wayne, James, Justin
&
Danni the model man

BIG THANKS TO...