

EXPLORING SUSTAINABLE PERMANENCE

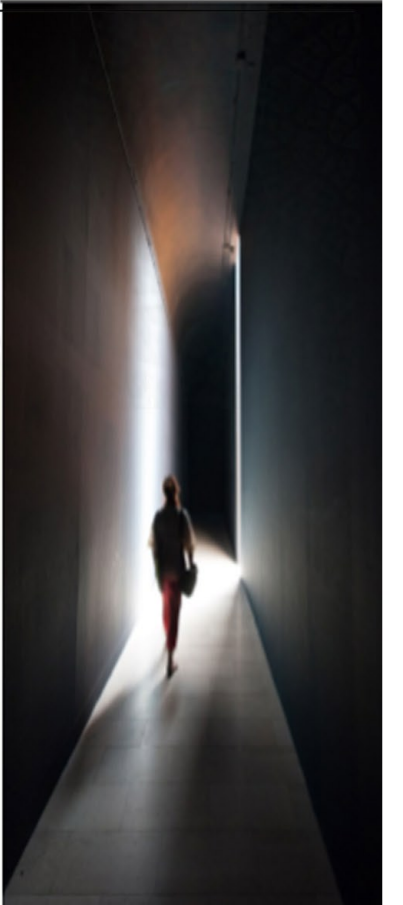
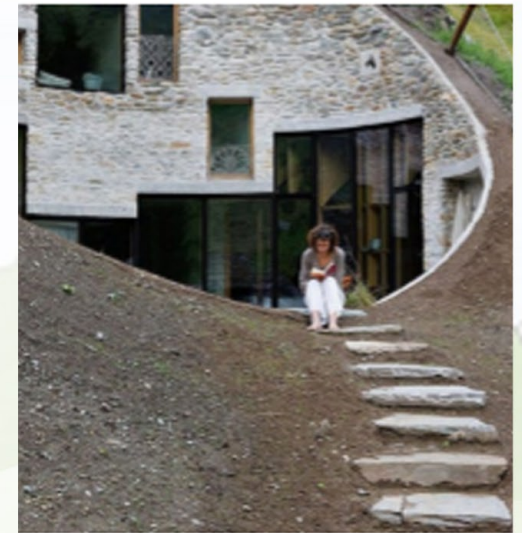
JEFF HEAD, ALYSSA ANDERSEN, MALACHI PAYNE

CONCEPT

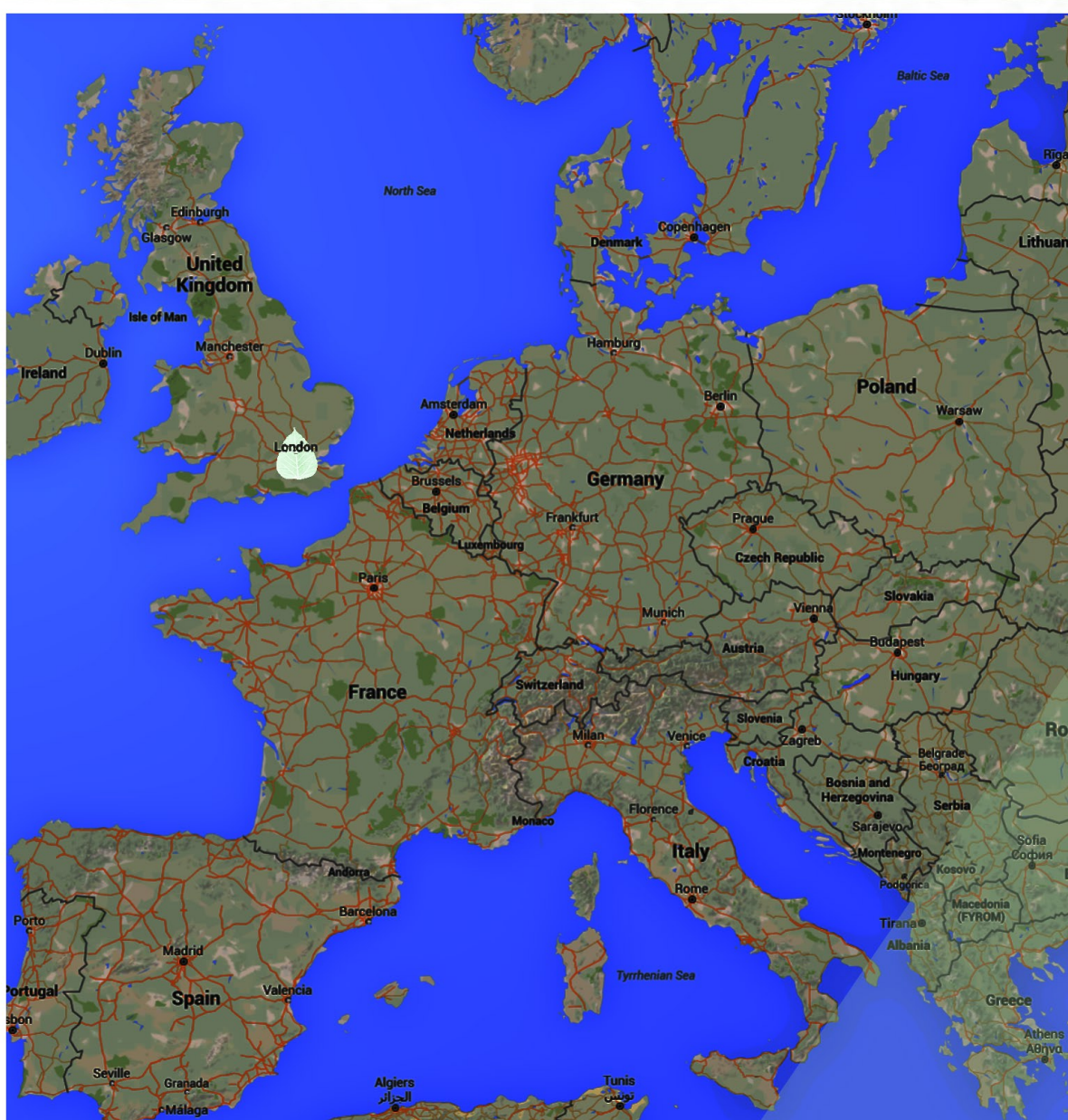
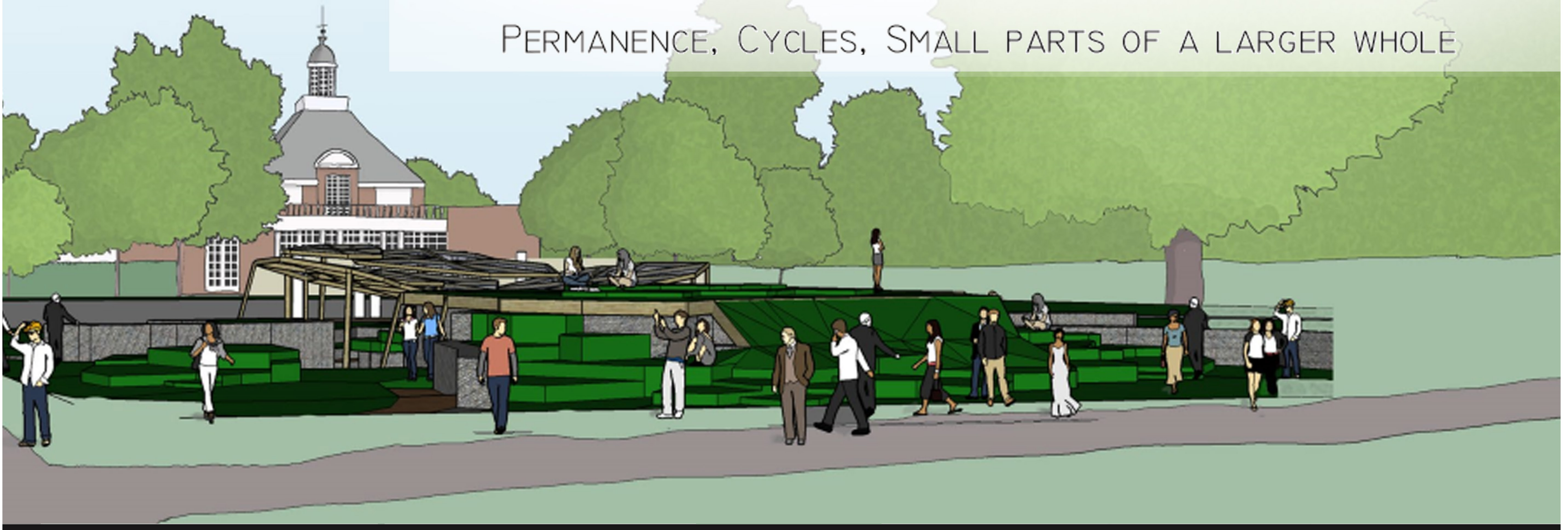
PERMANENCE IS THE STATE OR QUALITY OF LASTING OR REMAINING UNCHANGED INDEFINITELY. THIS PAVILION SEEKS TO FURTHER EXPLORE THE IDEA OF PERMANENCE AS BEING MADE UP OF SMALLER PARTS CONTRIBUTING TO A LARGER WHOLE, AND ITS RELATION TO SUSTAINABILITY IN THE BUILT ENVIRONMENT.

TO DEMONSTRATE THE BROADER IDEA OF PERMANENCE AS BEING MADE UP OF SMALLER PARTS A LEAF CAN SERVE AS A USEFUL EXAMPLE. A LEAF IS NOT GENERALLY ASSOCIATED WITH THE IDEA OF PERMANENCE, AND IN TRUTH A SINGLE LEAF IS NOT OF ITSELF PERMANENT, BUT WHEN SEEN AS PART OF A LARGER WHOLE, LEAVES ARE AND HAVE BEEN A PERMANENT PART OF THE ENVIRONMENT THROUGH COUNTLESS CYCLES.

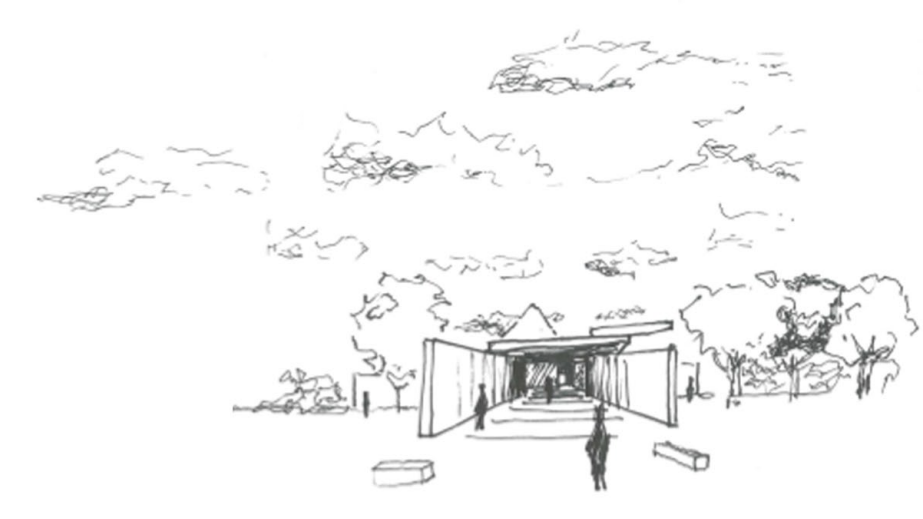
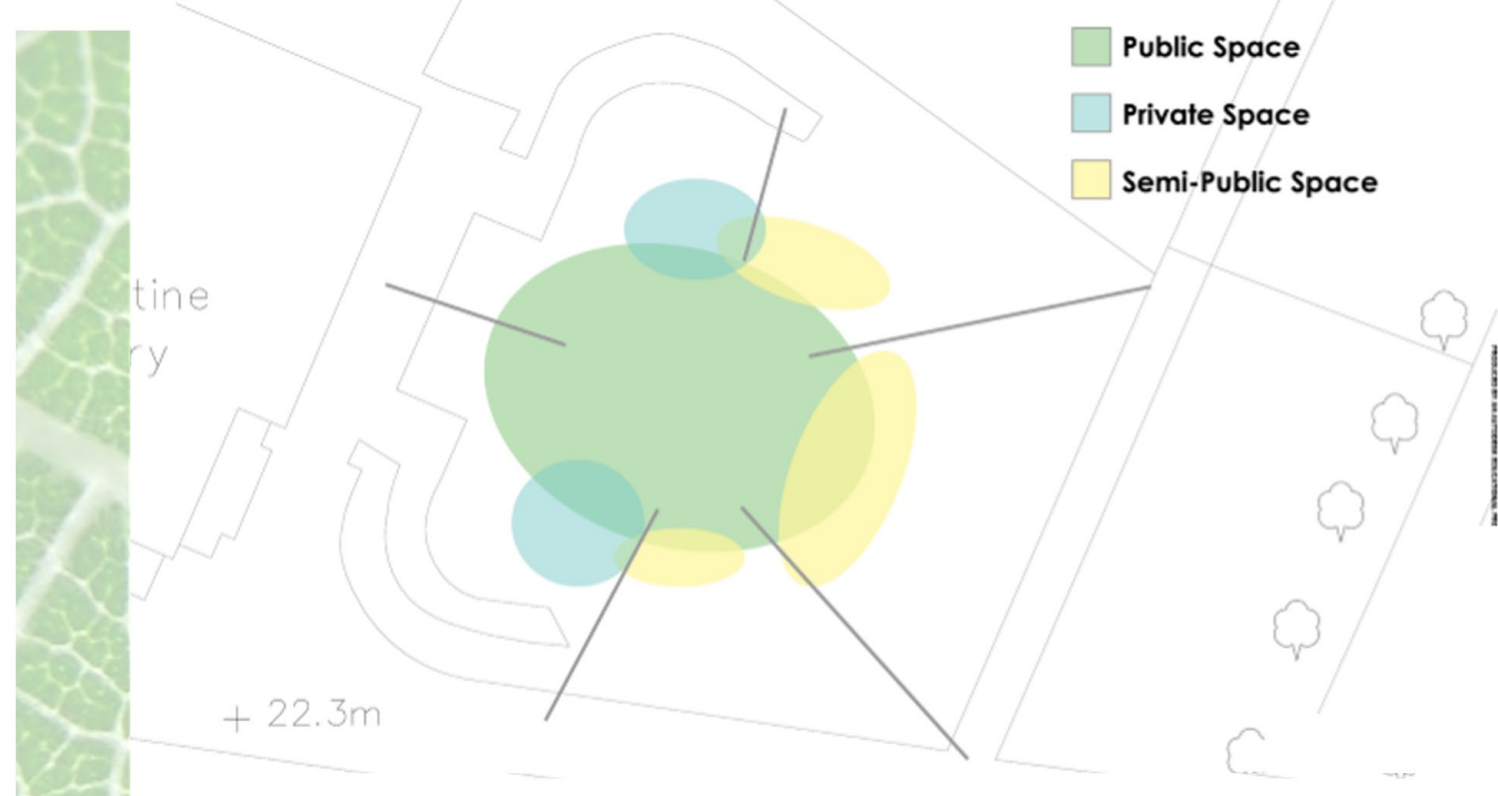
THE IDEA OF THE SERPENTINE PAVILION IS SIMILAR TO THIS. EACH NEW PAVILION IS ON SITE FOR A LIMITED PERIOD OF TIME, BUT THE SITE REMAINS AND IS REUSED FOR FUTURE PAVILIONS MAKING IT SOMETHING OF PERMANENCE. THIS PAVILION SEEKS TO EMBODY THAT SENSE OF PERMANENCE BY PRIMARILY USING THE ONSITE RESOURCES, THE SOIL, AS BUILDING MATERIALS. IT ALSO DEMONSTRATES PERMANENCE THROUGH ITS FORM, USE OF RENEWABLE OR RECYCLED MATERIAL, WATER MANAGEMENT, LIGHTING, AND ENERGY PRODUCTION.



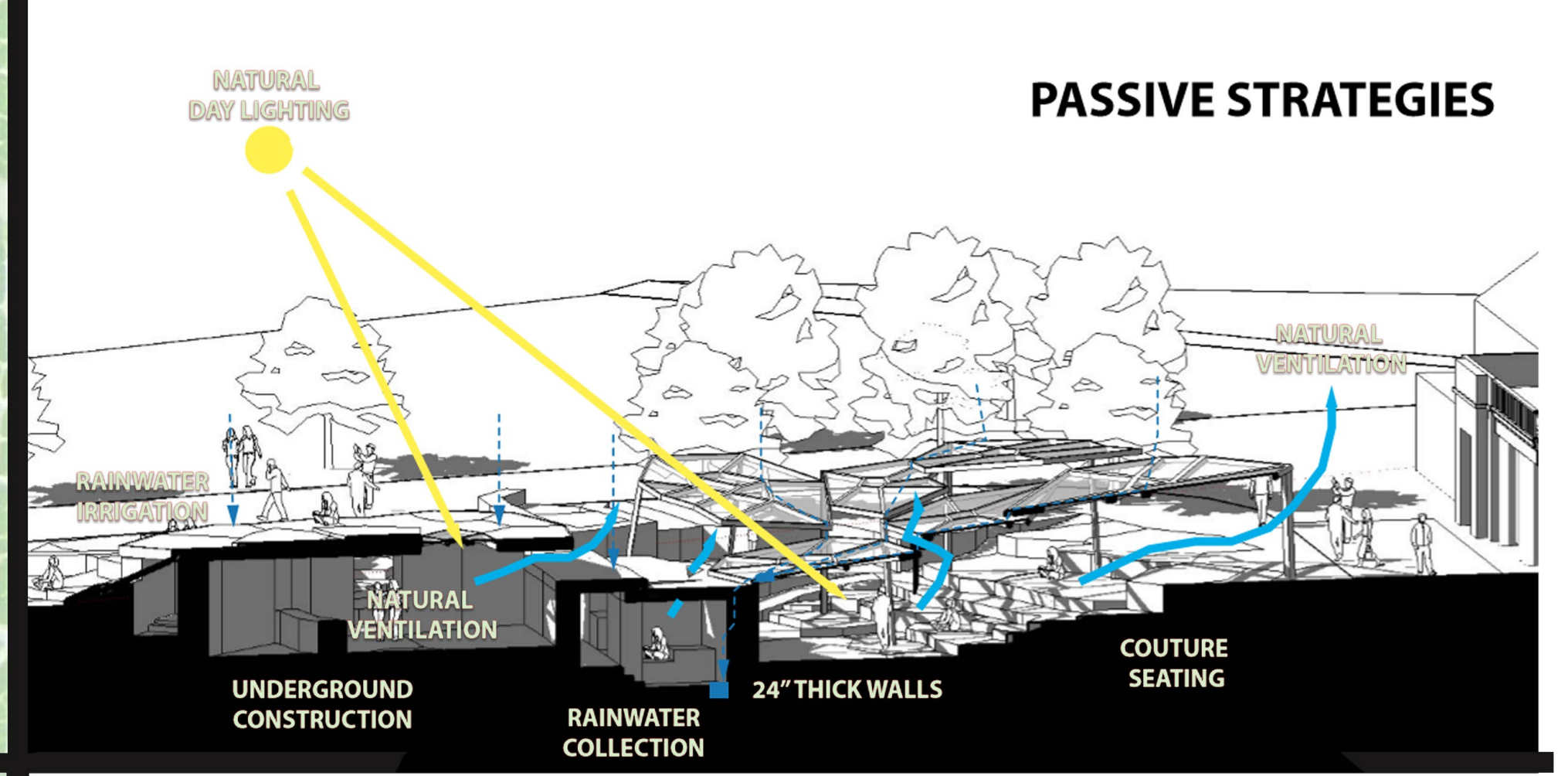
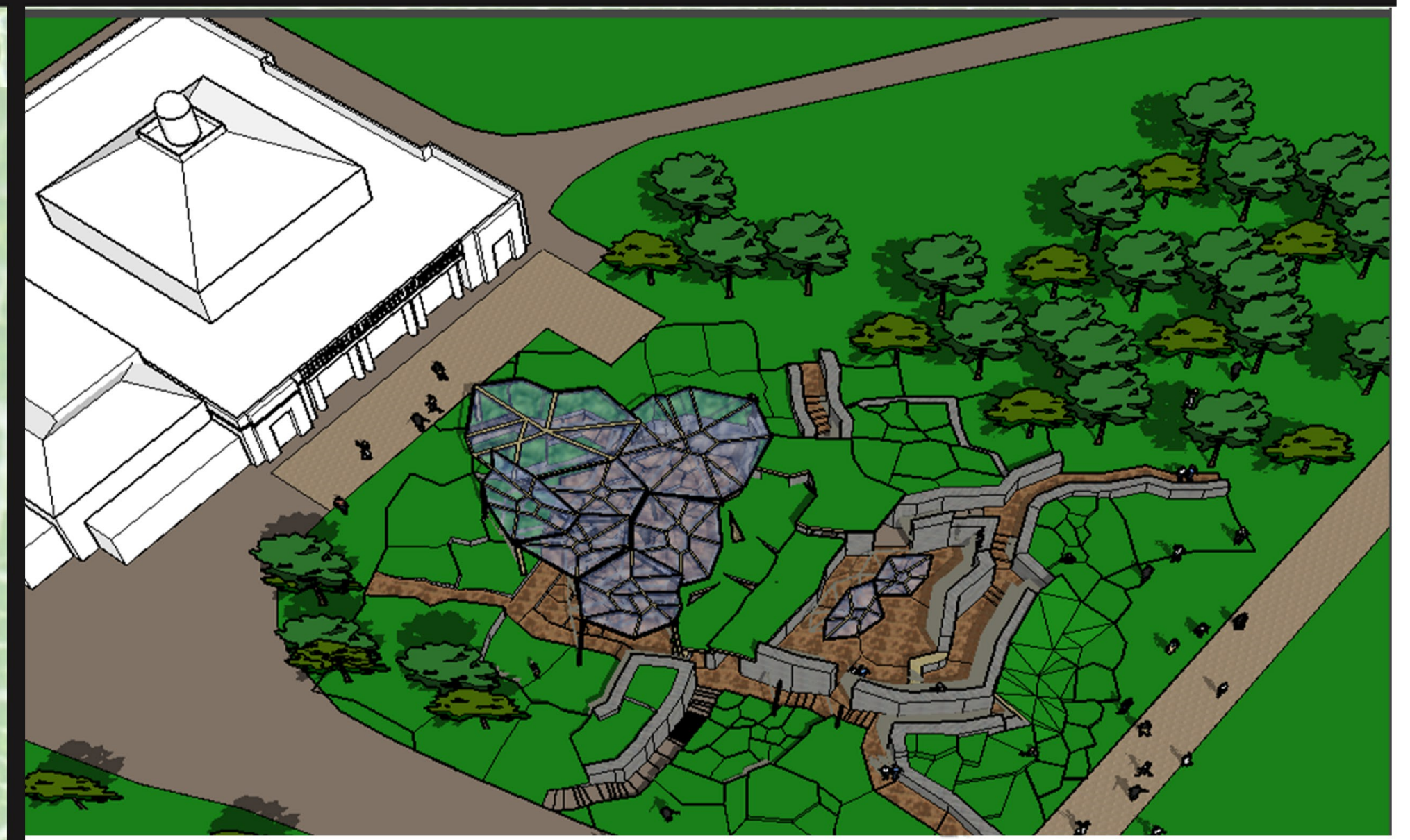
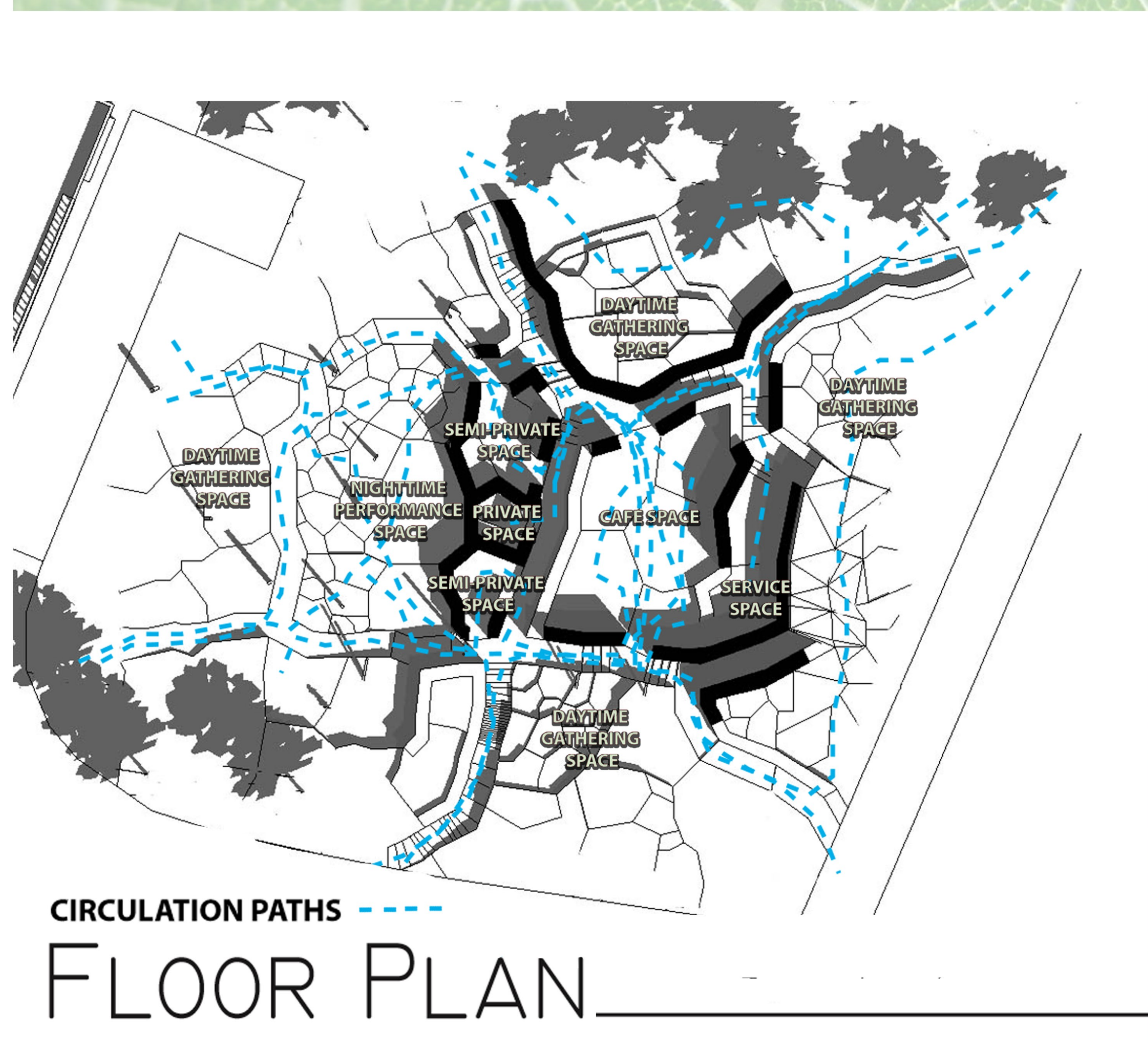
PERMANENCE, CYCLES, SMALL PARTS OF A LARGER WHOLE



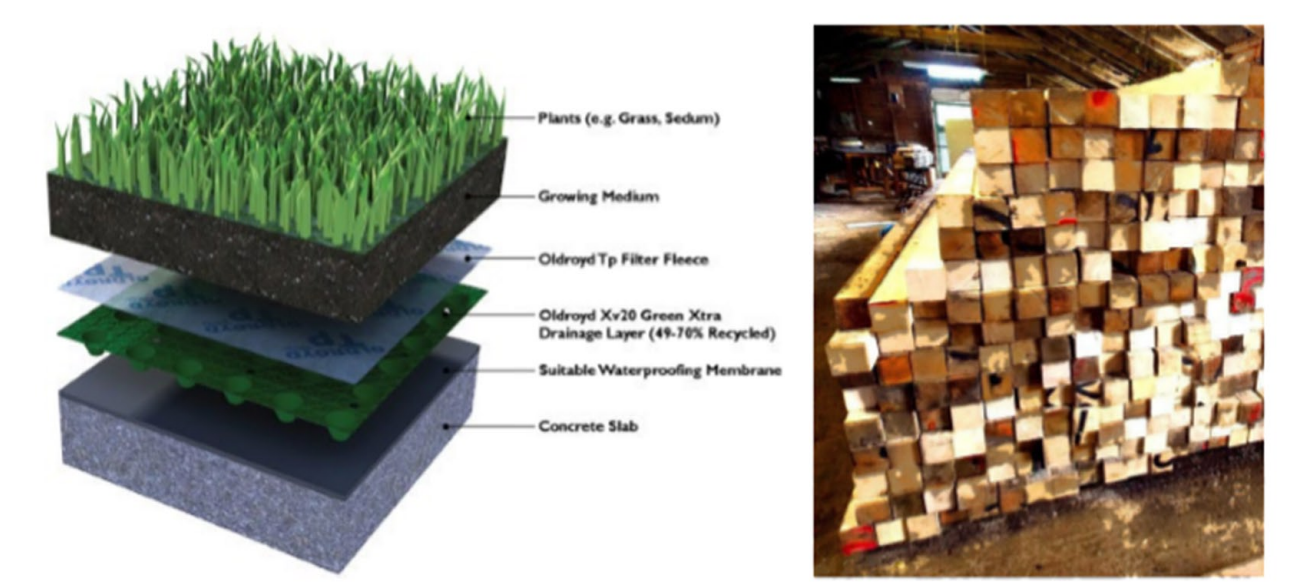
SITE PLAN



PROCESS WORK



SECTION



GABION WALLS, RECLAIMED BRICKS, WOOD FRAME, FRITTED SOLAR GLASS, RAMMED EARTH, GREEN ROOF

MATERIALS