

# Puzzle-ture

Alayne, Brett, Fatima, and Sam

# Design Considerations

Why C.L.T.?

Why kit of parts?

Why interact with the other building?

Why do we want people to go up high?

Why the ramp?

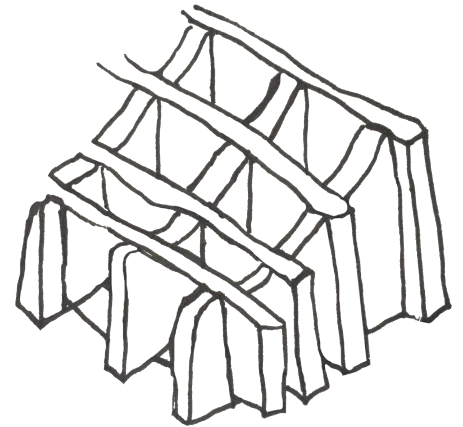
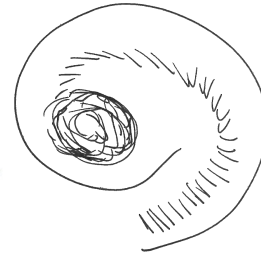
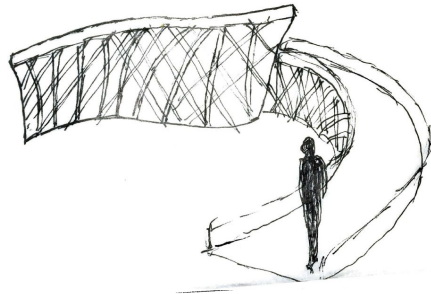
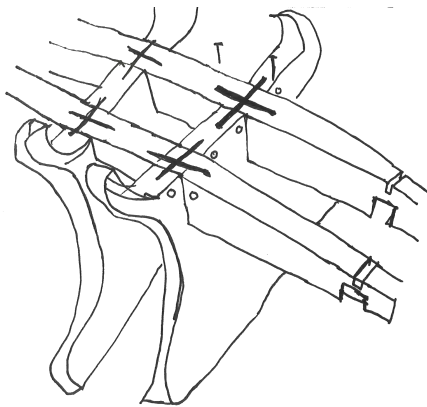
Where is the pavillion going next?

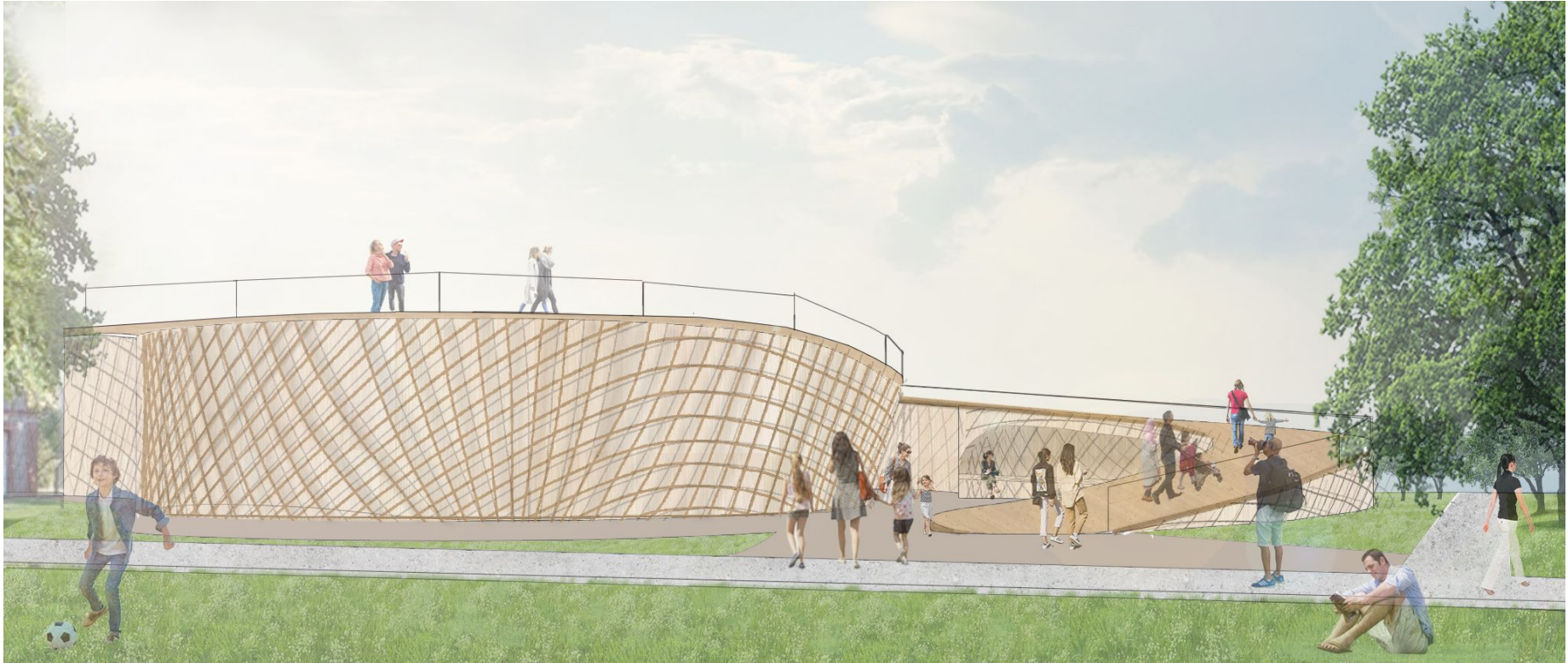
What happens to the site and parts before, during, and after the Pavilion?

# Design Intent

The Puzzle-ture is meant to be inhabited and experienced by its visitors. It is not simply an art piece, but an architectural expression designating a place to gather. The construction stays true to the intrinsic values of Cross Laminated Timber, using planar sheets cut like a puzzle, then interlocking together to create the organic overall form. The ramp allows for ALL visitors to see Hyde Park from new heights and interact with the existing building.

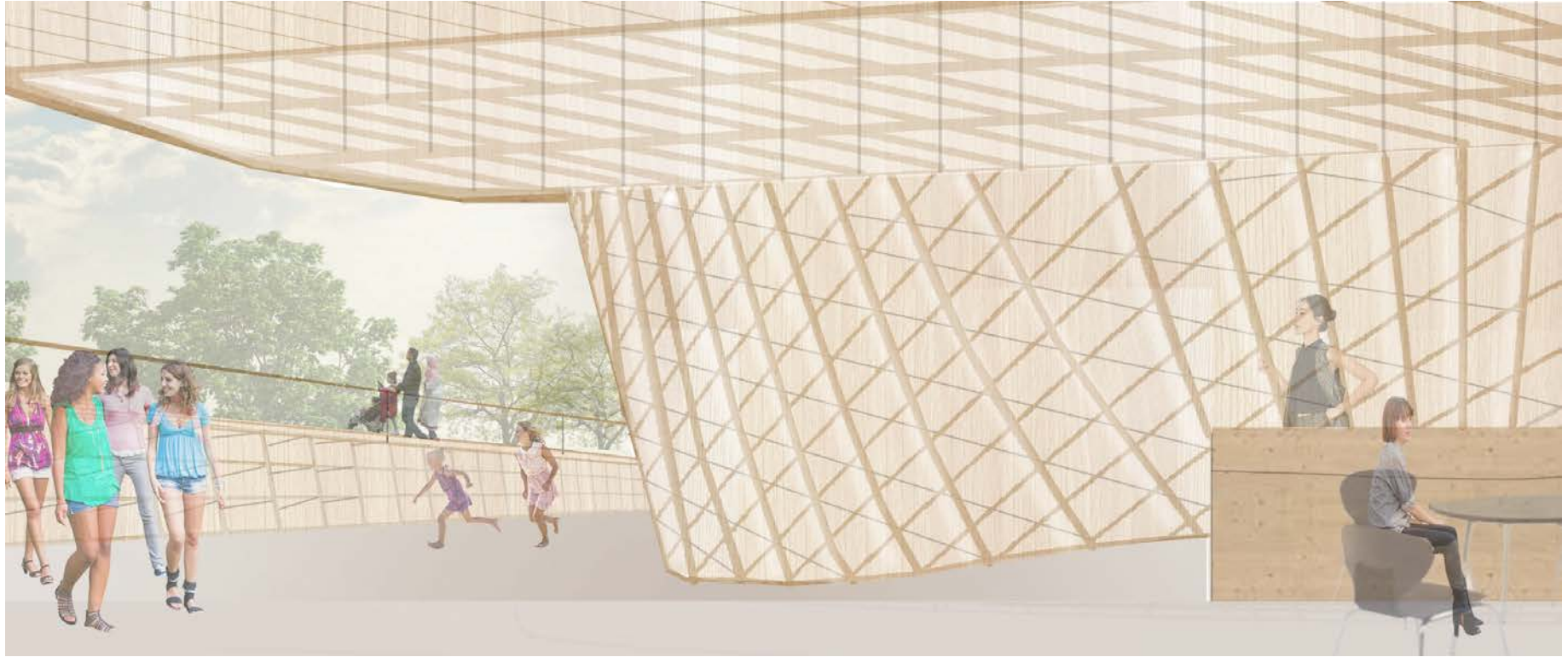
# Inspiration





View from the southeast corner of the site





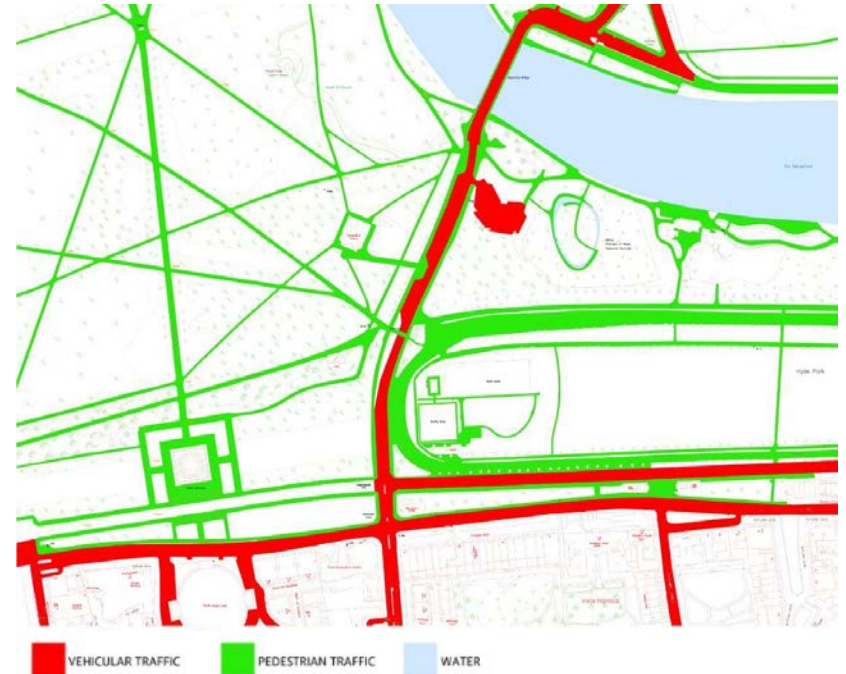
View from cafe sitting area

# Site Considerations

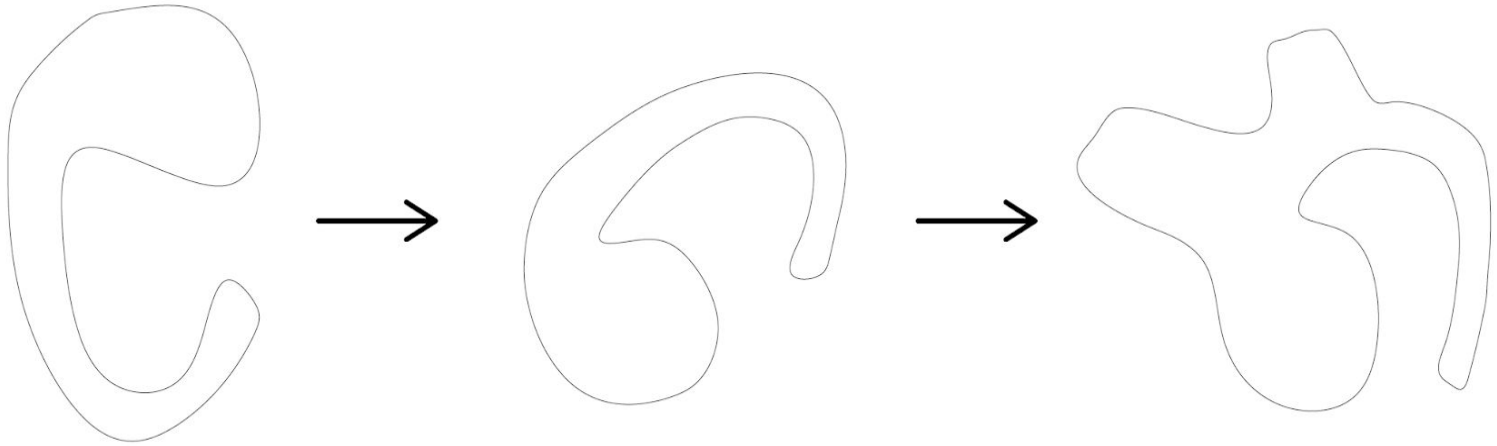
## Vegetation and Site Access



## Traffic Patterns



# Process of Floor Plan

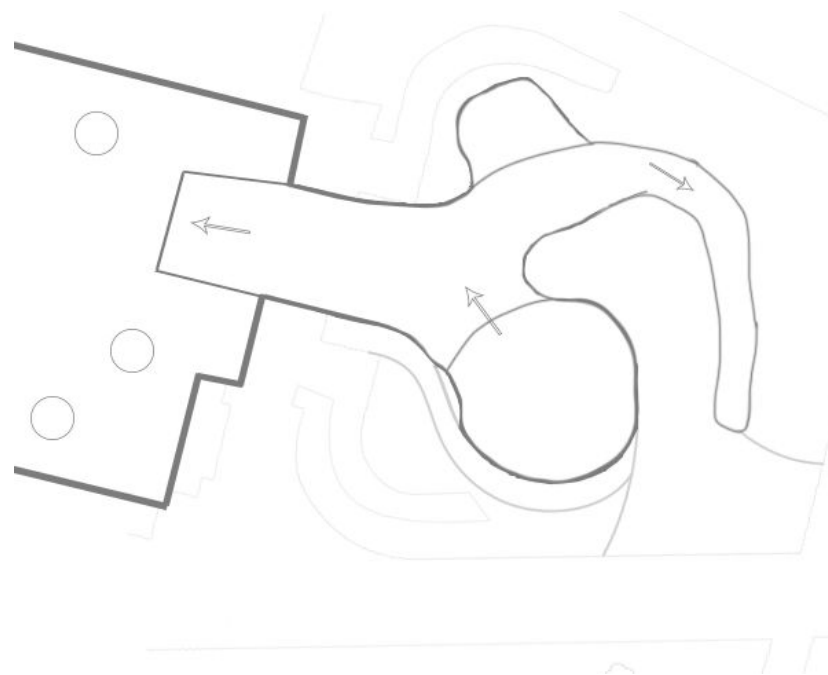




# Plans

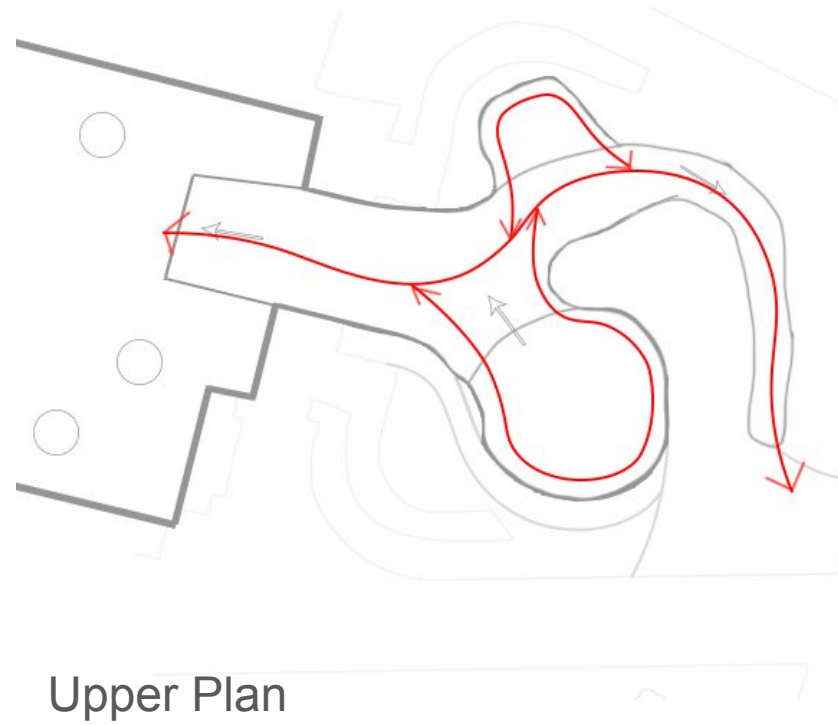
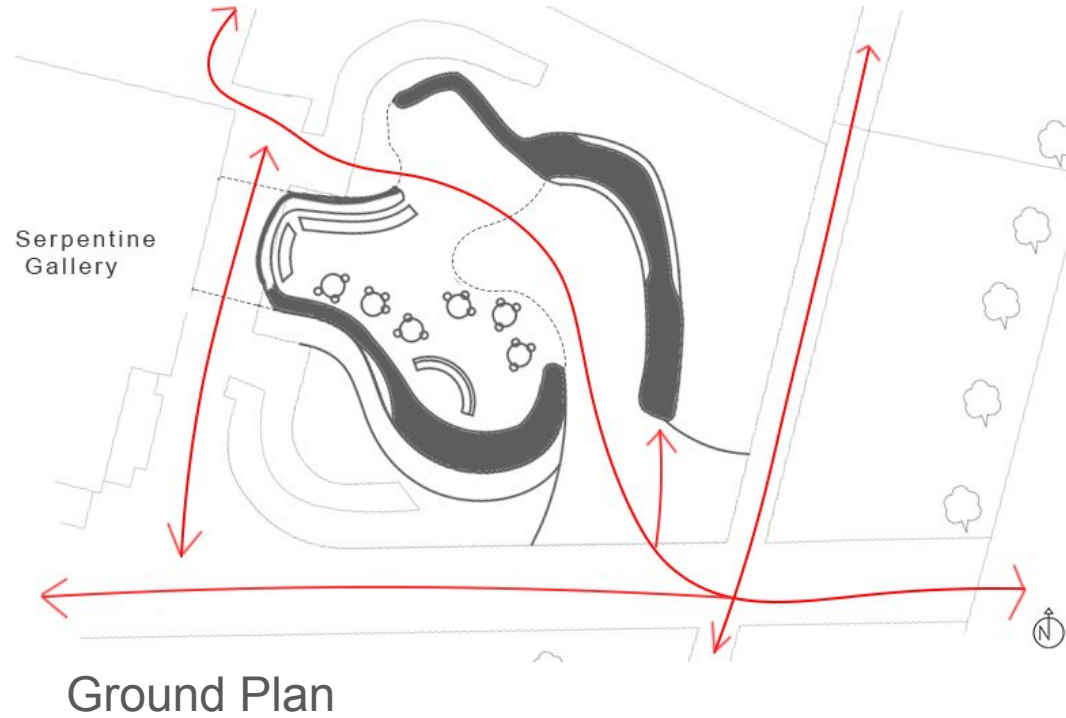


Ground Plan



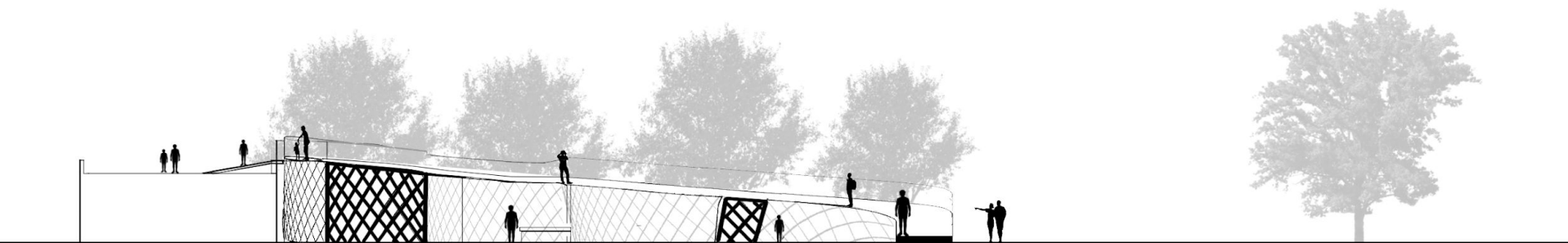
Upper Plan

# Pavillion Circulation



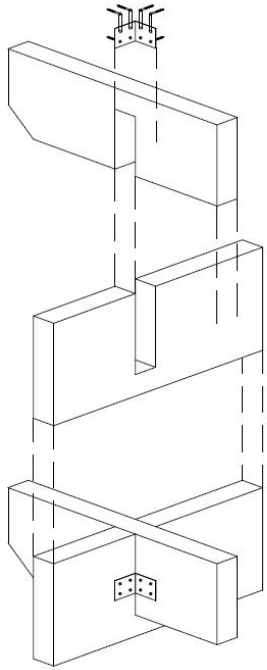


East Elevation

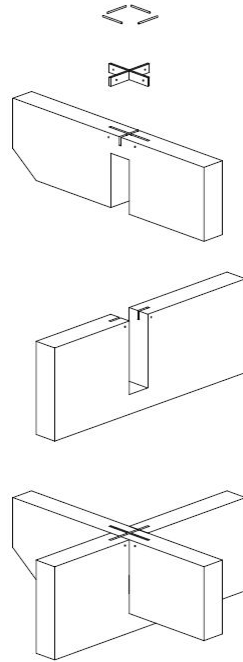


Longitudinal Section

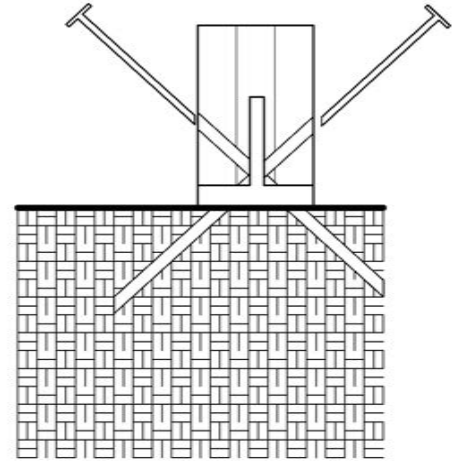
## Securing Interlocking Pieces #1



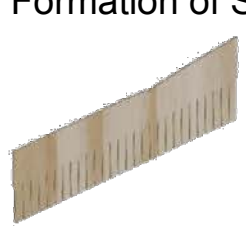
## Securing Interlocking Pieces #2



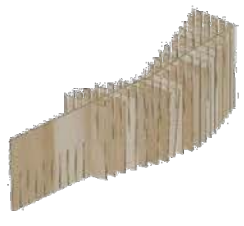
## Securing Structure to Ground



# Formation of Structure



1



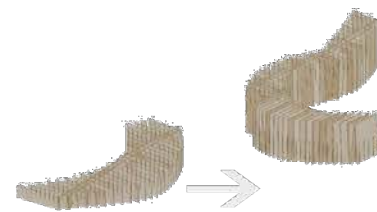
2



3



4



5



6



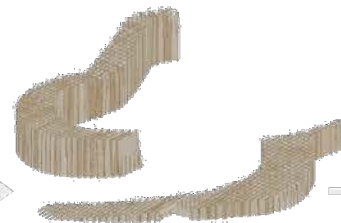
7



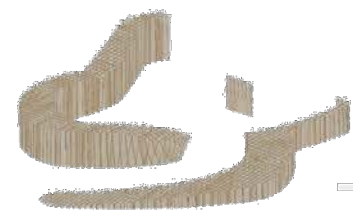
8



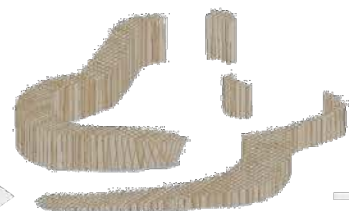
9



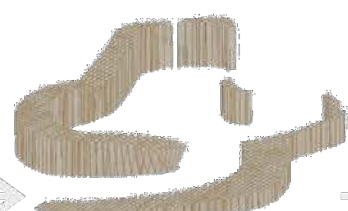
10



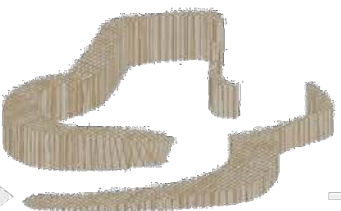
11



12



13



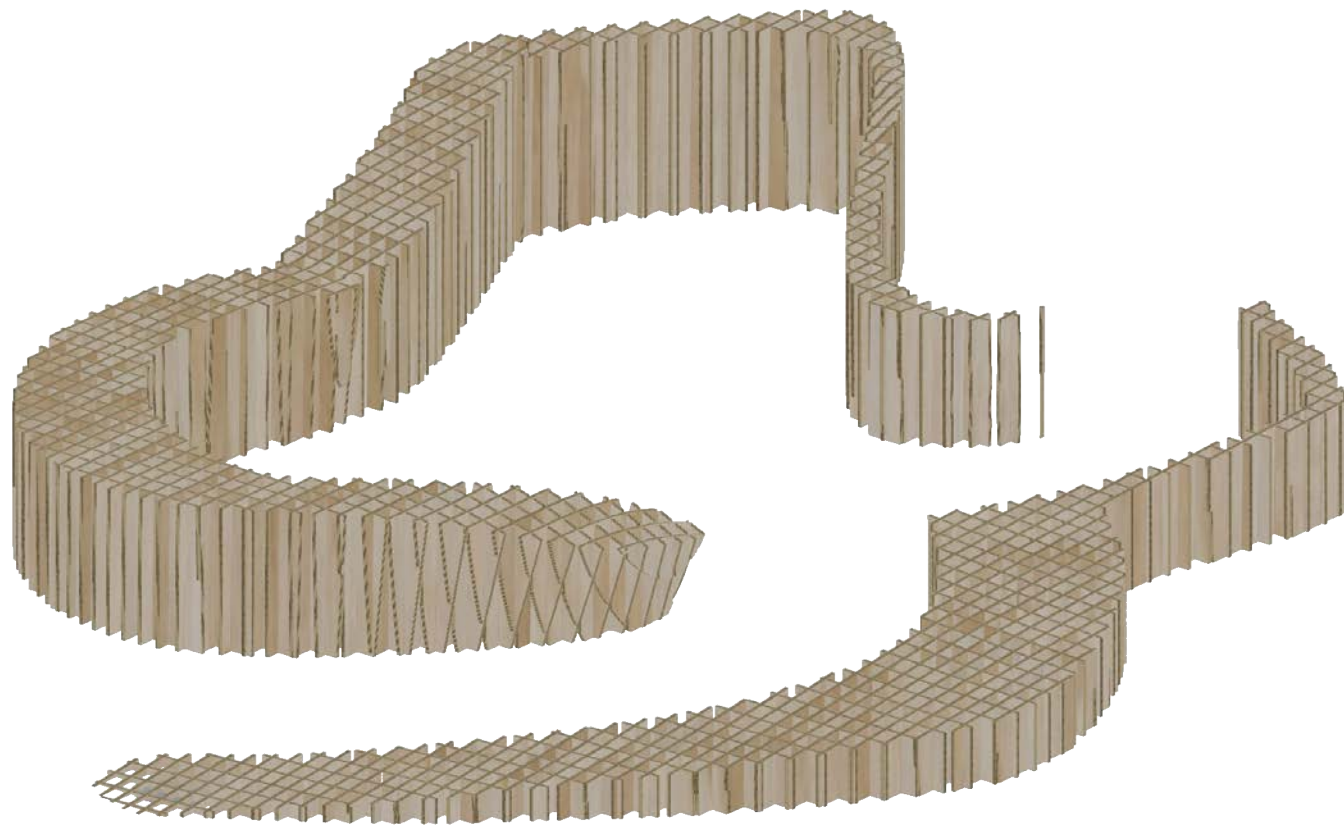
14



15





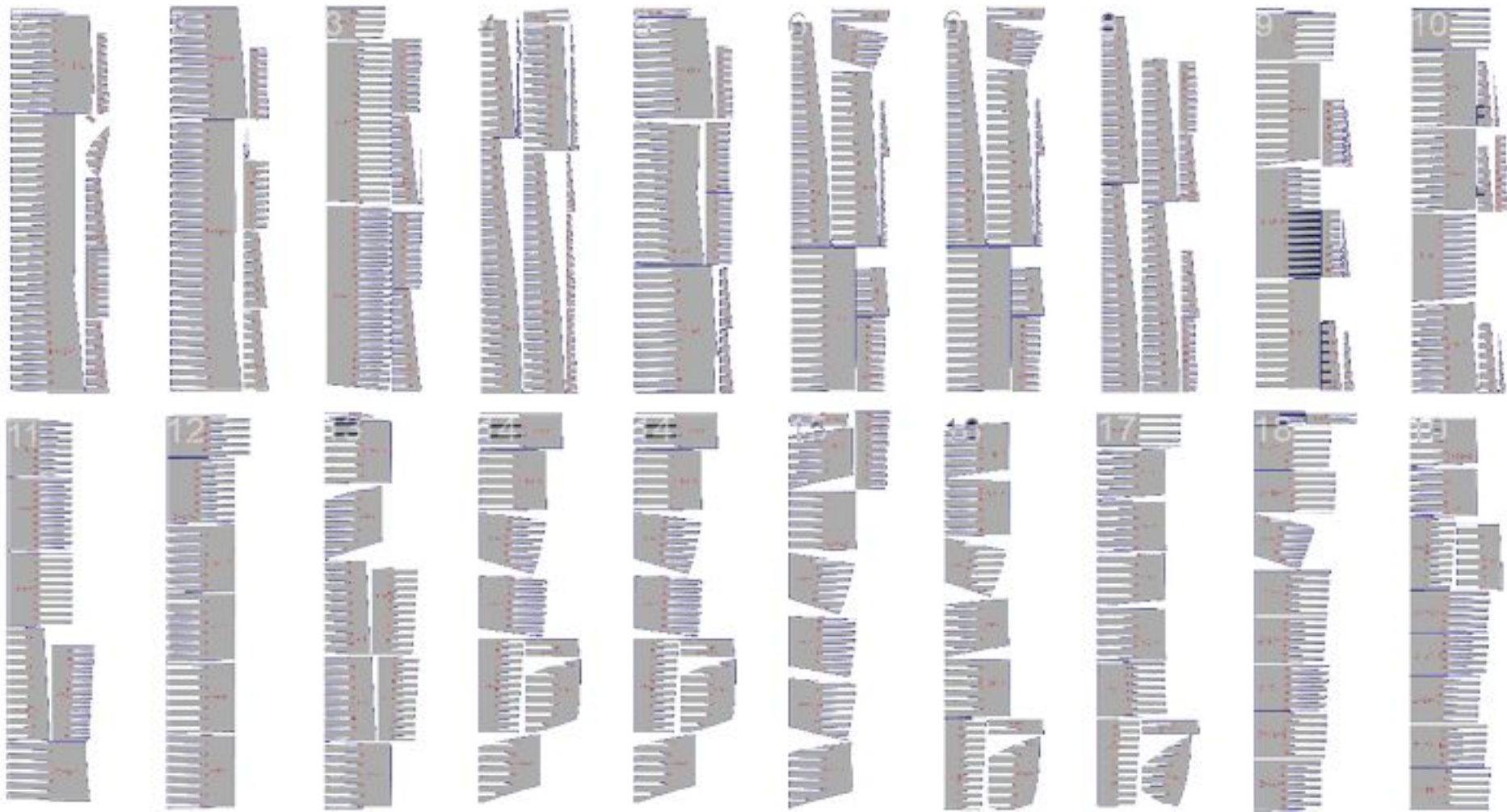


Structural Pattern



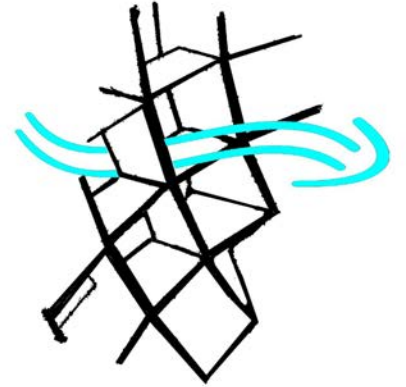
Built-in Bench

# Cut Sheets-Prefabricated

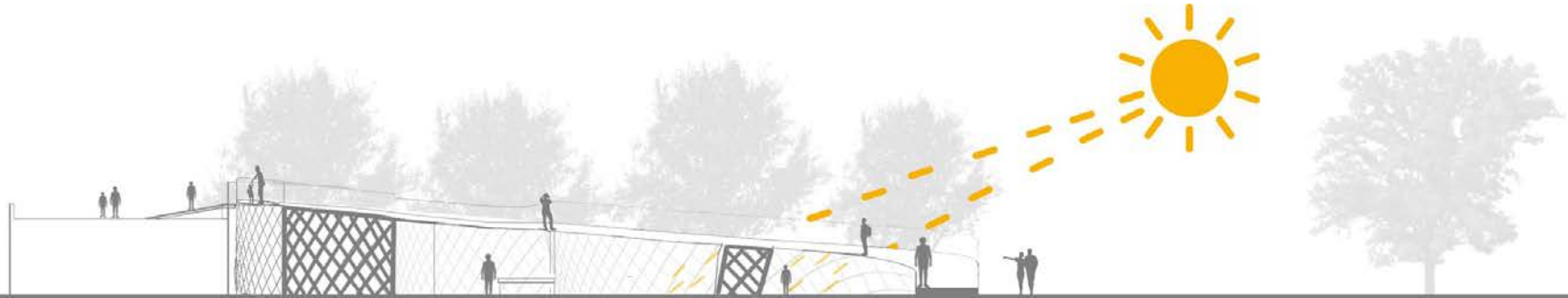


# Regeneration Diagrams

- As a kit-of-parts of prefabricated pieces, the CLT pavillion can be taken apart and reassembled on a new site.
- Prefabrication of pieces cuts down material waste on and off site.
- The foundation leaves the site as untouched as possible and does not require concrete.
- The holes created by the pattern of the structure let in daylight and ventilation from the wind.



Ventilation through structure



Sun filtering through structure pattern