

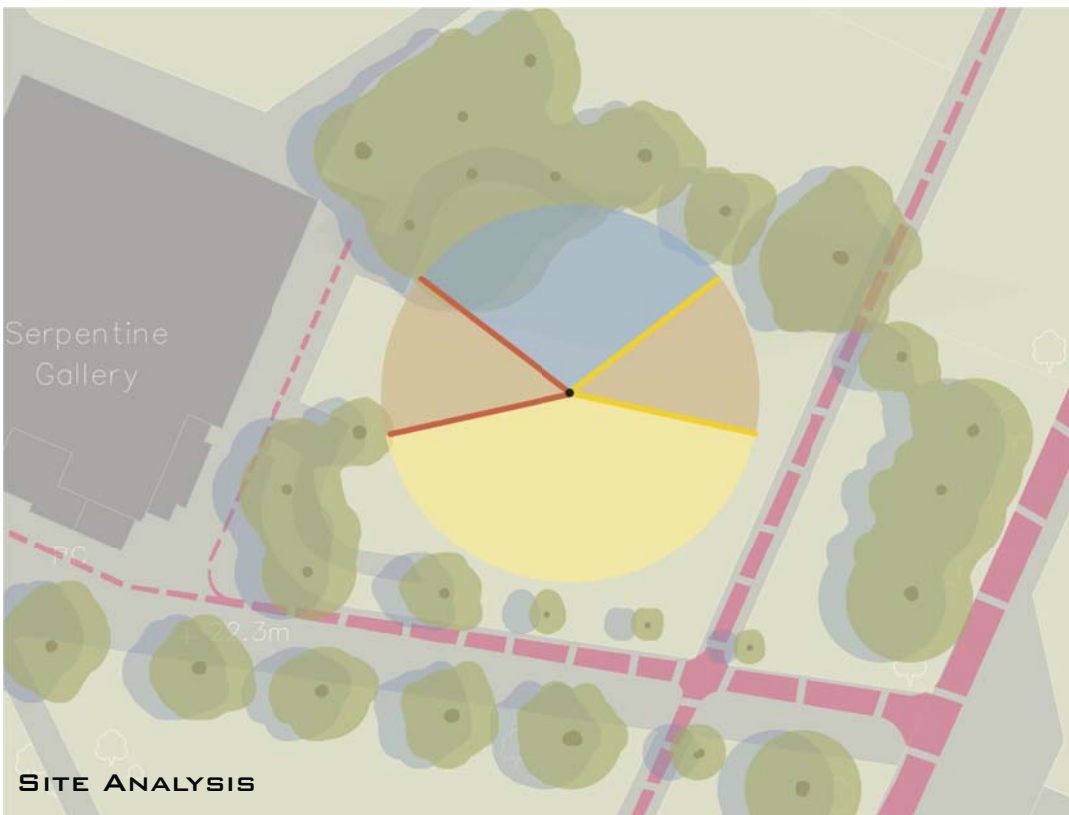
# Long Grass Pavilion

ARCH 580 SUMMER 2022 LONDON GREEN ARCHITECTURE

INSTRUCTORS:  
BRUCE HAGLUND  
CAROLINA MANRIQUE  
REGAN CAMPBELL (TA)  
AMIN TAHA (GROUP WORK)  
TISHA EGASHIRA



REGGIE MACE | JUHEE MOON | MARIEL JASSO



On our visits to the site, we noted the key existing elements - trees, hedges, hardscaping, elevation changes - and the flow of people through the space.

This being a park setting and temporary during London's warmest months, cooling from ventilation and shade were top goals for comfort. Rain shelter less so as the locals tend to embrace it.

When designing the Long Grass Pavilion, we set a phenomenological priority. We want to offer visitors an opportunity to imagine a future more symbiotic with nature through architecture, architecture that more honestly responds to its climate than a defense against it.

The more experience people gain in intimate contact with vegetation, pollinators, water and outside air, the more empathic they become to humanity as part of ecology, not in dominion over it.

## INSPIRATIONS

Our precedents came from three places, the natural environment, vernacular garden traditions, and both traditional and cutting edge innovative wood construction techniques

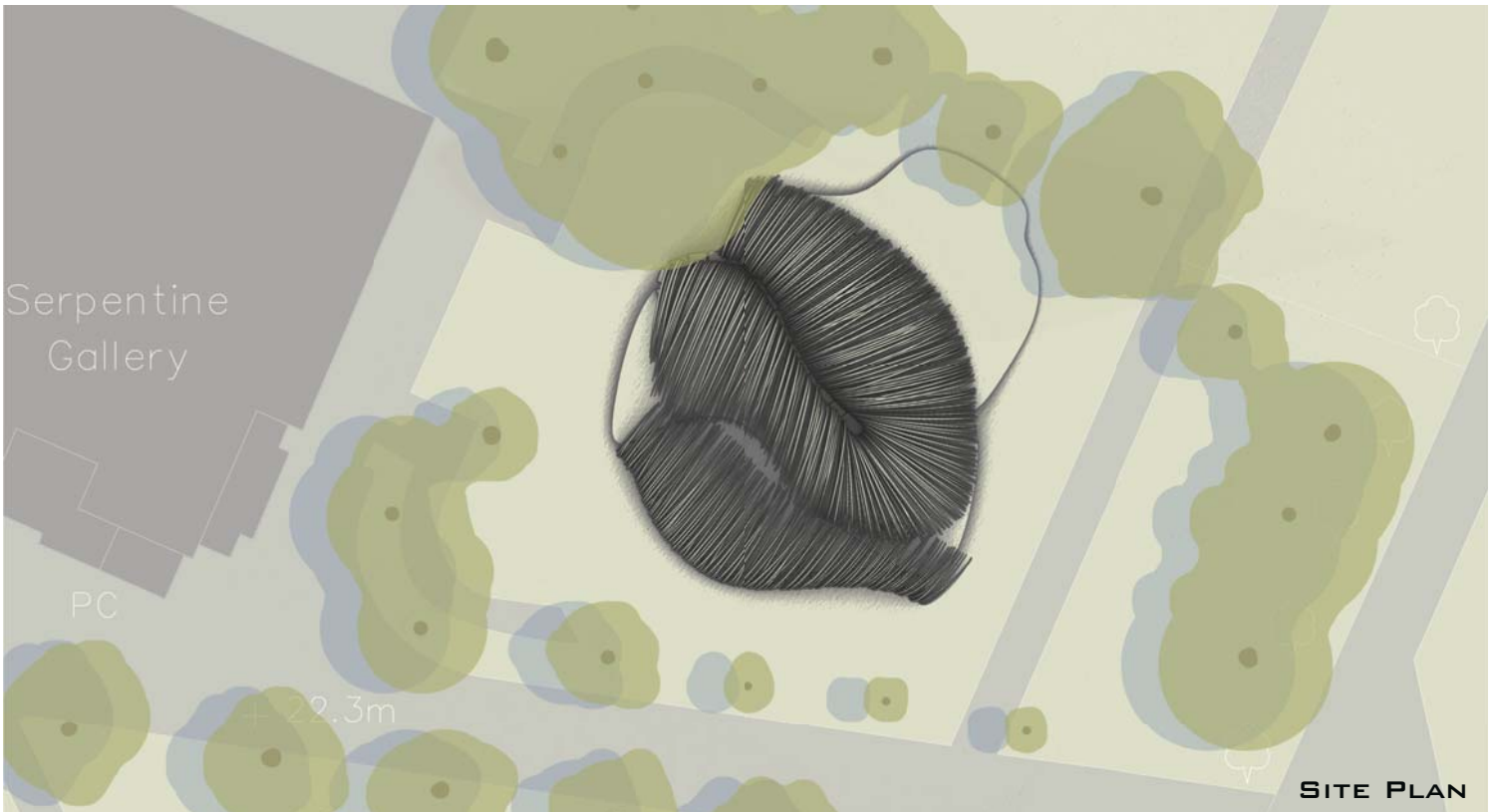
## PARTI SKETCH



INTERIOR PERSPECTIVE



INTERIOR PERSPECTIVE

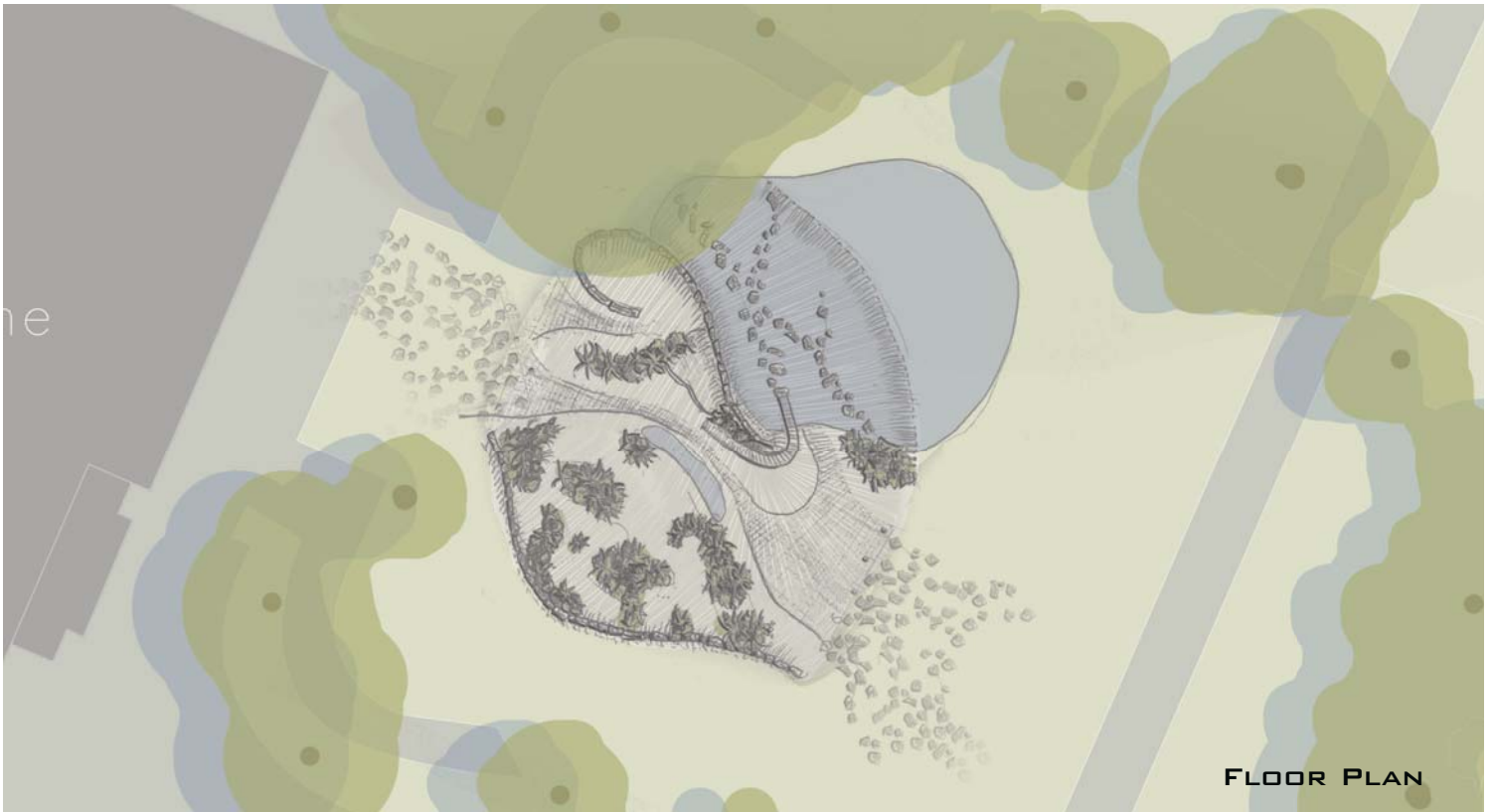


Serpentine  
Gallery

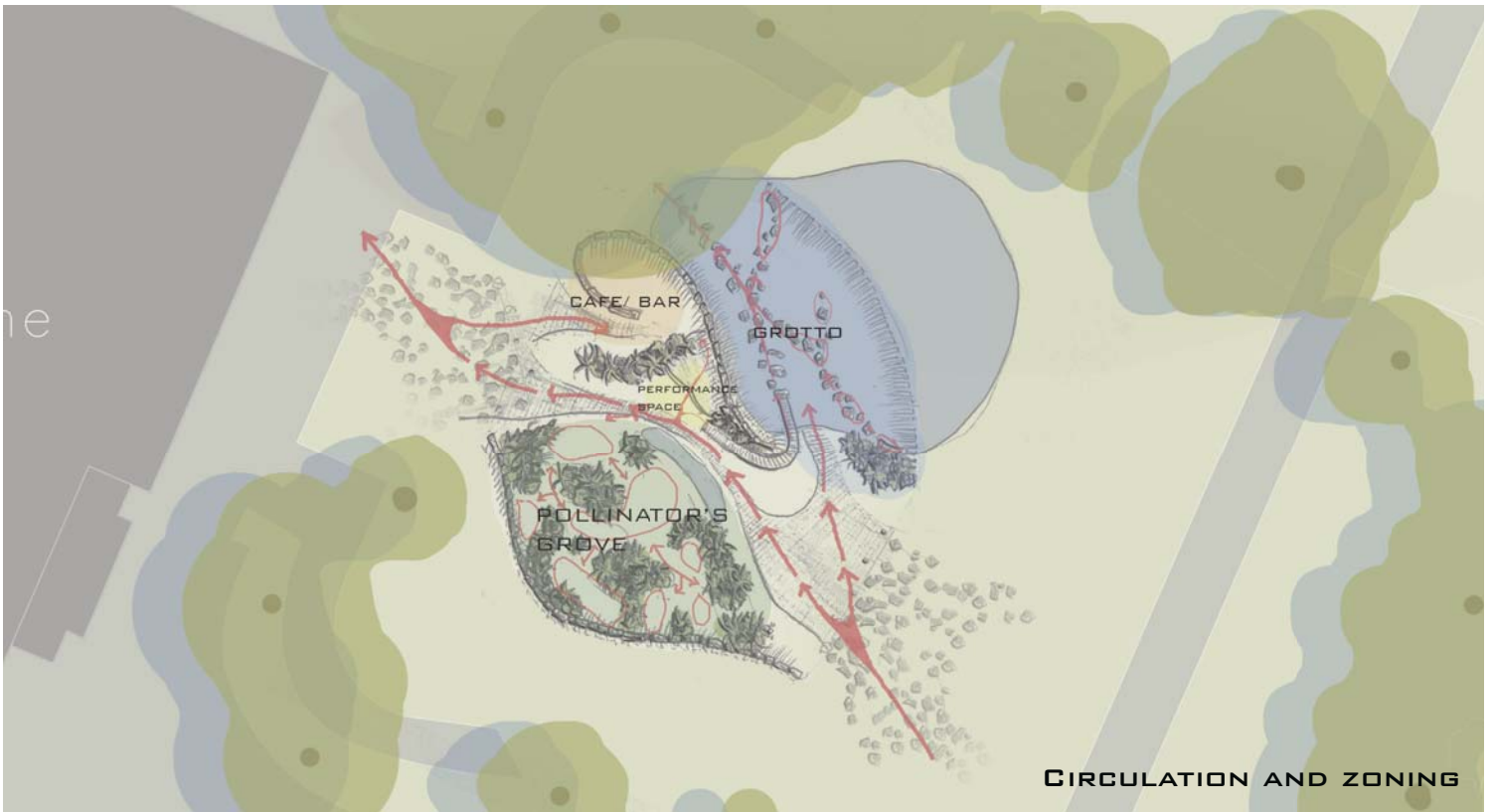
PC

22.3m

SITE PLAN



FLOOR PLAN



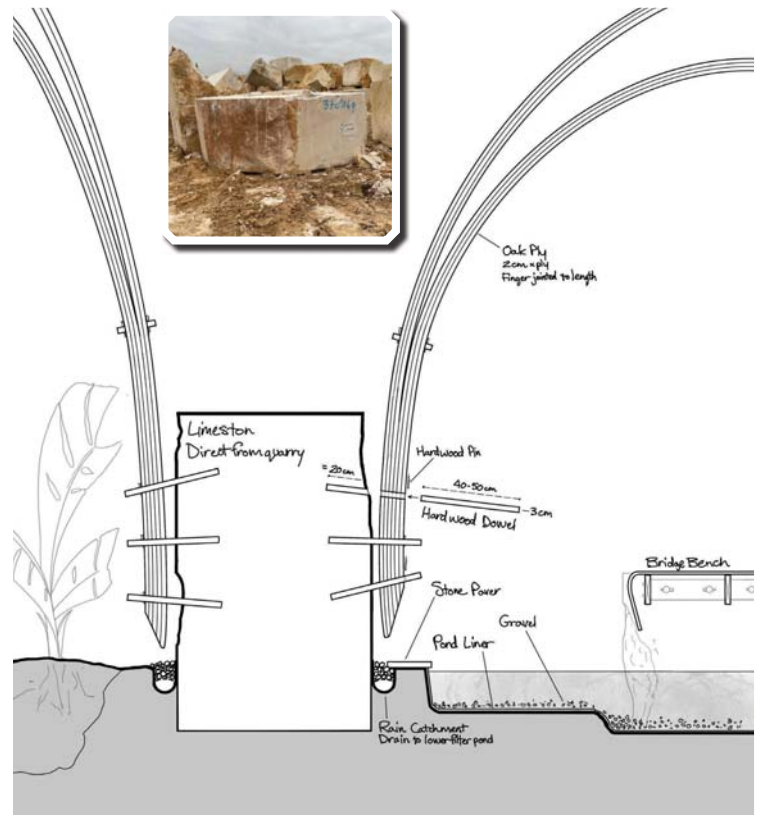
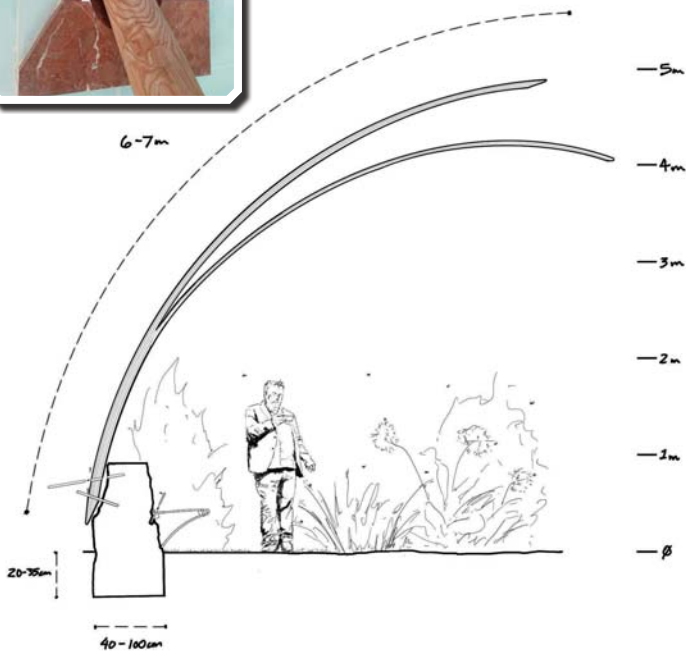
CIRCULATION AND ZONING



SECTION PERSPECTIVE



DETAILS





WHAT AN AMAZING EXPERIENCE WORKING AT GROUPWORK OFFICE AND RECEIVING GUIDANCE FROM AMIN TAHA. WE HAD SO MUCH FUN (AND ANXIETY) AND VERY APPRECIATE THIS OPPORTUNITY!



*Thank you!*