

# FEILDEN CLEGG BRADLEY ARCHITECTS



RICHARD FEILDEN



PETER CLEGG



KEITH BRADLEY



THE CREW

## EDUCATIONAL BACKGROUND

### -RICHARD FEILDEN-

THE FOUNDING PARTNER OF FEILDEN CLEGG ARCHITECTS, DIED ON 3 JANUARY 2005 IN A TRAGIC ACCIDENT. HE WAS CRUSHED UNDER A TREE HE WAS FELLING IN HIS BELOVED WOODS BEHIND HIS HOME IN WARLEIGH, NEAR BATH.

### -PETER CLEGG-

A SENIOR PARTNER WITH FEILDEN CLEGG BRADLEY, HAVING ESTABLISHED THE PRACTICE WITH RICHARD FEILDEN IN 1978. EDUCATED AT CAMBRIDGE AND YALE, HE IS A VISITING PROFESSOR AT THE UNIVERSITY OF BATH. HE HAS MORE THAN 25 YEARS' EXPERIENCE IN LOW ENERGY ARCHITECTURE AND IS ACTIVELY INVOLVED IN RESEARCH AND ENVIRONMENTAL DESIGN. HE WAS ELECTED CHAIR OF THE SOUTH WEST DESIGN REVIEW PANEL IN AUGUST 2005, PART OF A NEW NATIONAL INITIATIVE TO PROVIDE EXPERT REVIEWS OF DEVELOPMENT PROPOSALS. HE WAS ELECTED TO THE BOARD OF TRADA FROM 2002 - 2005 AND



# FEILDEN CLEGG BRADLEY ARCHITECTS

HAS ALSO SERVED AS A MEMBER OF THE NATIONAL TRUST'S ARCHITECTURE PANEL. IN SEPTEMBER 2005 PETER WAS AWARDED AN HONORARY DOCTORATE OF OXFORD BROOKES UNIVERSITY.

-KEITH BRADLEY-

KEITH JOINED FEILDEN CLEGG BRADLEY IN 1987, WAS MADE A PARTNER IN 1995, A SENIOR PARTNER IN 1997 AND IN 1998 SET UP OUR LONDON OFFICE. KEITH WAS ON THE STEERING GROUP OF BUILD FOR LIFE, THE JOINT CABE, CIVIC TRUST AND HOUSE BUILDERS FEDERATION INITIATIVE AIMED AT RAISING THE QUALITY STANDARD OF UK HOUSING PROJECTS. HE IS A GUEST CRITIC AND LECTURER AT NUMEROUS SCHOOLS OF ARCHITECTURE IN THE UK AND A FREQUENT SPEAKER AT CONFERENCES IN THE UK AND ABROAD.

## DESIGN PHILOSOPHY

FEILDEN CLEGG BRADLEY IS INSTINCTIVELY PROGRESSIVE, INSTINCTIVELY CO-OPERATIVE, INSTINCTIVELY INNOVATIVE. WE BELIEVE THAT PROGRESSIVE ARCHITECTURE, FOUNDED ON THE PRINCIPLES OF HUMANISTIC MODERNISM, HAS A POSITIVE INFLUENCE ON THE SOCIAL AND ENVIRONMENTAL ASPECTS OF OUR LIVES. WE ARE NOT PRODUCT OR IMAGE ARCHITECTS WITH A PRE-PREPARED PRESCRIPTION FOR ALL PROJECTS: OUR PREOCCUPATION IS WITH AN ARCHITECTURE THAT IS COHERENT, BOTH INTELLECTUALLY AND EMOTIONALLY FROM CONCEPT THROUGH TO DETAIL.

WE SEEK INNOVATION THAT PUSHES THE BOUNDARIES OF CONSTRUC-



# FEILDEN CLEGG BRADLEY ARCHITECTS

TION TECHNIQUE, MATERIALS AND SUSTAINABLE ENVIRONMENTAL PRACTICE TO PROVIDE OUR CLIENTS WITH BUILDINGS THAT EXCEED THEIR EXPECTATIONS. BUILDINGS THAT ARE AN INSPIRATION TO USERS AND PROVIDE A STRONG IDENTITY. BUILDINGS THAT STAND THE TEST OF TIME.

IMPORTANT GREEN BUILDING:

THE NEW ENVIRONMENTAL OFFICE, BUILDING RESEARCH ESTABLISHMENT, GARSTON

THIS IS A CUTTING EDGE PROJECT TO DEMONSTRATE A WIDE RANGE OF SUSTAINABILITY ISSUES. THE SCHEME HAS ACHIEVED ALL OF ITS DESIGN TARGETS, BEEN WIDELY PUBLISHED AND HAS WON A LARGE NUMBER OF DESIGN AWARDS.

CLIENT: BUILDING RESEARCH ESTABLISHMENT

PROJECT VALUE: £2,900,000

COMPLETION DATE: 1996

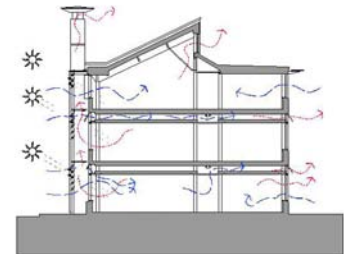
1998 CONCRETE SOCIETY AWARDS CERTIFICATE OF EXCELLENCE

1998 CARE HOME DESIGN AWARDS, THIS CARING BUSINESS AWARD FOR ENERGY EFFICIENCY

1998 DESIGN COUNCIL MILLENNIUM PRODUCT AWARDED

1998 RIBA AWARD

1997 BRITISH INSTITUTE OF ARCHITECTURAL TECHNOLOGISTS



# FEILDEN CLEGG BRADLEY ARCHITECTS

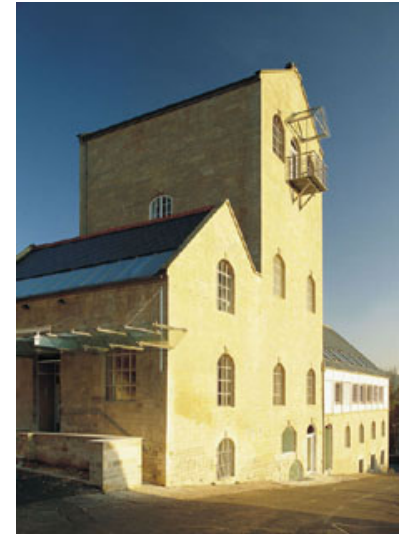
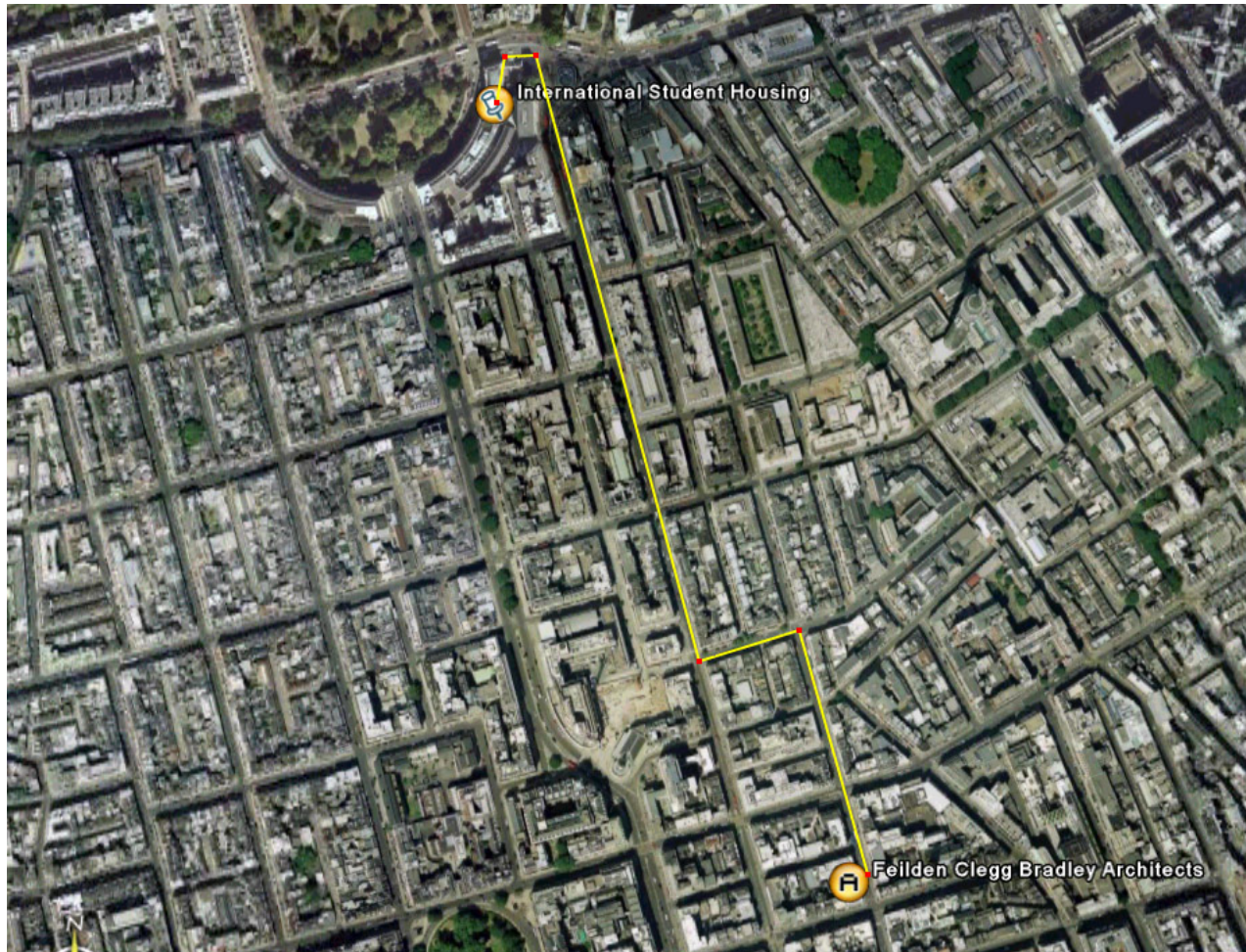
## OFFICE LOCATION AND TRANSPORT OPTIONS

-START - LONDON 229 GREAT PORTLAND STREET (W1W)

WALK TO LONDON 21 GREAT TITCHFIELD STREET

-END - LONDON 21 GREAT TITCHFIELD STREET

14 MINUTES



# FEILDEN CLEGG BRADLEY ARCHITECTS

## REFERENCES

-[WWW.FEILDENCLEGG.COM](http://WWW.FEILDENCLEGG.COM)

-[HTTP://WWW.COLTINFO.CO.UK/PRODUCTS-AND-SYSTEMS/ARCHITECTURAL-SOLUTIONS/SOLAR-SHADING-SYSTEMS/PROJECTS/BRE-BUILDING-16/](http://WWW.COLTINFO.CO.UK/PRODUCTS-AND-SYSTEMS/ARCHITECTURAL-SOLUTIONS/SOLAR-SHADING-SYSTEMS/PROJECTS/BRE-BUILDING-16/)

-GOOGLE EARTH

-[HTTP://WWW.TFL.GOV.UK/TUBE/](http://WWW.TFL.GOV.UK/TUBE/)

