

SIR NORMAN FOSTER

“the best architecture comes from a synthesis of all the elements that separately comprise a building...”

-Foster



Beijing Airport, China
Source: <http://www.fosterandpartners.com/>



Snow Show, Italy
Source: <http://www.fosterandpartners.com/>



Commerzbank, Germany
Source: <http://www.kvadrat.dk/images/Referencer/commerzbank.jpg>



Center for Clinical Science Research, USA
Source: <http://www.gaborcselle.com/sfbayarea4/images/06%20Stanford...>

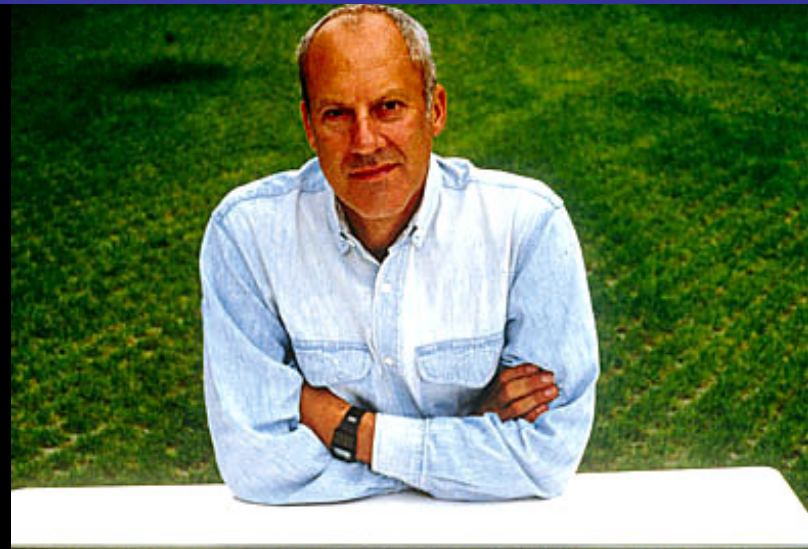


Hong Kong Bank Headquarters, Hong Kong
Source: <http://www.fosterandpartners.com/>



British Museum, England
Source: <http://www.fosterandpartners.com/>

- Born in 1935 in Manchester, England
- Entered Manchester School of Architecture when 21 years old
- Received Master's Degree at Yale University
- Norman, Wendy, Sue Rogers and Richard Rogers form firm 'Team 4' in 1963
- Foster's Associates (now known as Foster and Partners) created in 1967
- Receives AIA Gold Medal (1994)
- Wins the Pritzker Architecture Prize (1999)
- Currently has offices across the world in London, Berlin and Singapore with over 500 employees



Norman Foster
Source: <http://www.pritzkerprize.com/mediakit99.htm>

DESIGN PHILOSOPHY

“Technology is part of civilization and being anti-technology would be like declaring war on architecture and civilization itself. If I can get carried away with some passion about the poetry of the light in one of my projects, then I can also, in the same vein, enjoy the poetry of the hydraulic engineering.”

-Foster



London City Hall (GLA)

Source: <http://www.solvayindupa.com/static/wma/jpg/1/0/1/3/7/helicalramp.jpg>



Hearst Tower

Source: <http://www.tropolism.com/hearst-building.jpg>

NOTABLE FOSTER BUILDINGS AROUND LONDON



Canary Wharf Underground Station
Source: http://www.mykreeve.net/london/docklands/canary_wharf_tube_station.jpg



Millennium Bridge
Source: http://hhollick.com/v-web/b2/images/millennium_bridge.jpg



Swiss Re
Source: http://www.nottingham.ac.uk/sbe/projects/hirise_yr3_2003/01LondonVisit_w/pages/SwissRe.htm

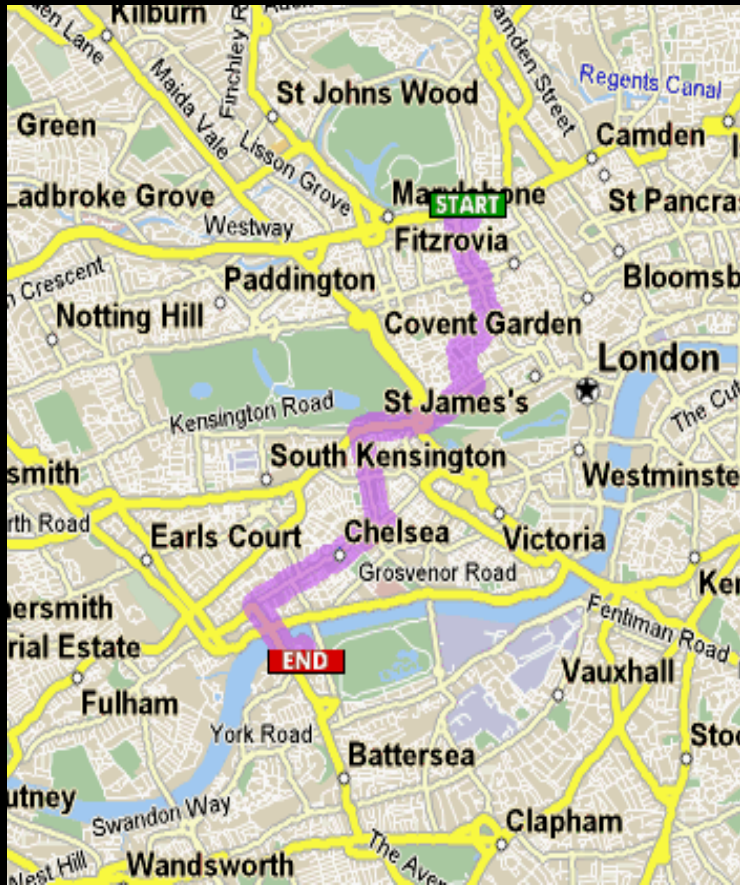


British Museum Interior
Source: http://www.crengle.com/images/images_big/british_museum2.jpg



London City Hall (GLA)
Source: <http://www.grootersnet.nl/family/Holiday/2003/20-Jul/slides/07-NorthBank-5-CityHall.html>

OFFICE LOCATION



International Students House
229 Great Portland Street
London
W1W 5PN

Foster and Partners
Riverside Three
22 Hester Road
London SW11 4AN

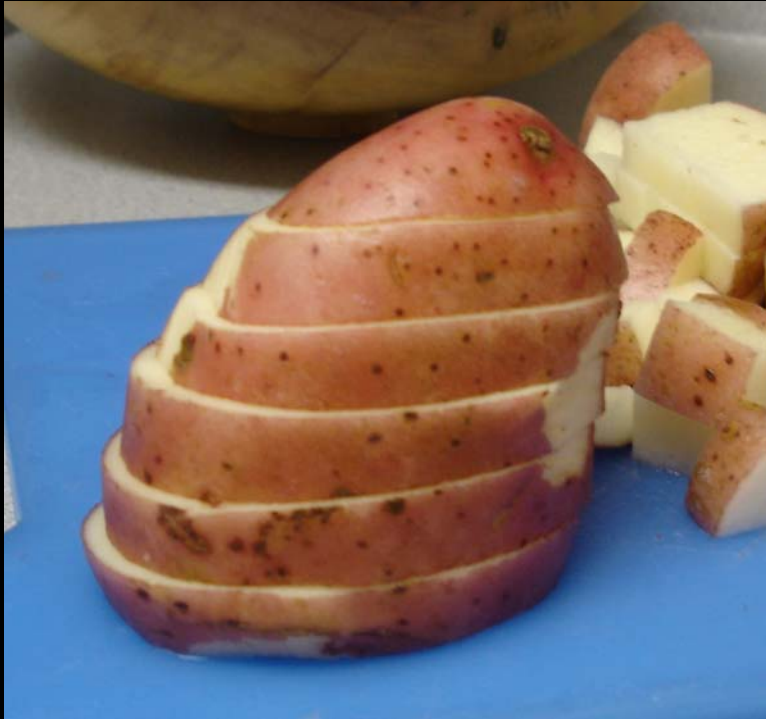
4.6 miles, approximately 13 minutes

REFERENCES

- “About Sir Norman Foster.” 1999 Pritzker Architectural Prize Media Kit. <<http://www.pritzkerprize.com/mediakit99.htm>>.
- “Current Work.” Foster and Partners. <<http://www.fosterandpartners.com/>>.
- “Norman Foster: Biography.” Designboom. 2000-2006. <<http://www.designboom.com/portrait/foster/bio.html>>.
- “Norman Foster.” Great Buildings Online. <<http://www.designboom.com/portrait/foster/bio.html>>.
- Walker, Andrew. “Lord Foster: Stormin’ Norman.” BBC News. 2 February 2002 <http://news.bbc.co.uk/1/hi/in_depth/uk/2000/newsmakers/1796173.stm>.



DESIGN INSPIRATION?



El Potato de Rojo
Source: Biss Dog's Photos



London City Hall (GLA)
Source: <http://community.webshots.com/photo/84095420/1084097730030483255ftGxCf>



<http://www>



nottingham.ac.uk/sbe/projects/hirise_yr3_2003/01London

<http://www.epdip.com/edificio.php?id=1351>





<http://community.webshots.com/photo/84095420/1084097730030483>





<http://www.solvayindupa.com/static/wma/jpg/1/0/1/3/7/helic>



<http://img.photobucket.com/albums/v467/jonchoo/0c13e209.jpg>





<http://www.tropolism.com/hea>