

Portland

Dan Flesher & Matt McAnulty

Portland

Incorporated in 1851

Population: Approx 584,000

Area: 145.09 square miles (133.43 is land, 11.66 is water)

Temperatures can range from below freezing to 100° (on occasion)



Mobility

| | | | | |
|---------------|---|---------------------------------|---|------------------------|
| Pvt. Car Only | o | You know, like in-between stuff | o | Bikes/Transit Networks |
|---------------|---|---------------------------------|---|------------------------|

Bicycle

6.3% of commuters travel by bike

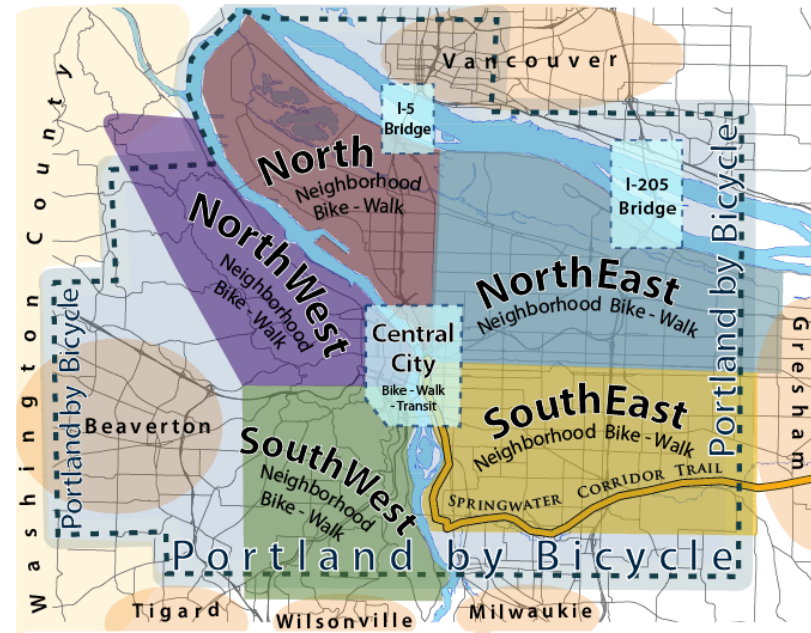
31% of all students walk or bike to school (as opposed to the national average of 13%)

Public schools give a 12-week-long bike-safety class

Bike sharing systems provide short-term bike rental through an automated system \$5-7 per day - \$50-85 per year



Bike + Walk Maps



Mobility

TriMet

100 Million riders per year, 41 million MAX, 58 million bus, 371,000 WES trips

(84%) are choice riders they have a car available or choose not to own one

Westside MAX can carry the equivalent of 2.9 extra lanes of traffic

43% of adults in the region use TriMet at least twice a month.

Nearly 90% of people in the TriMet district live within 1/2 mile of transit service.



Walkability

Ped. Barriers

Thoughtless, Unfriendly Sidewalks

Average American Sidewalks

Pedestrian Friendly

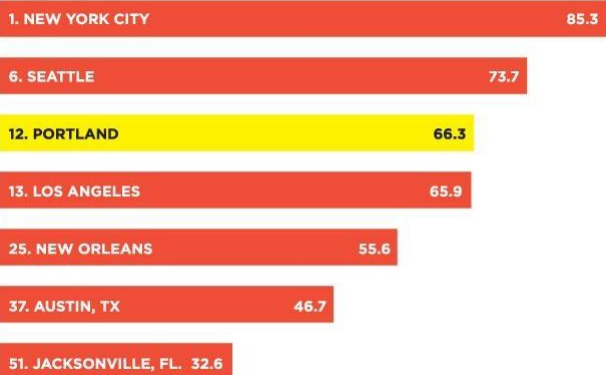
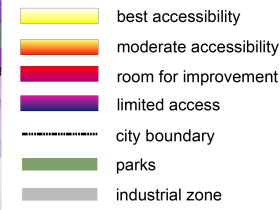
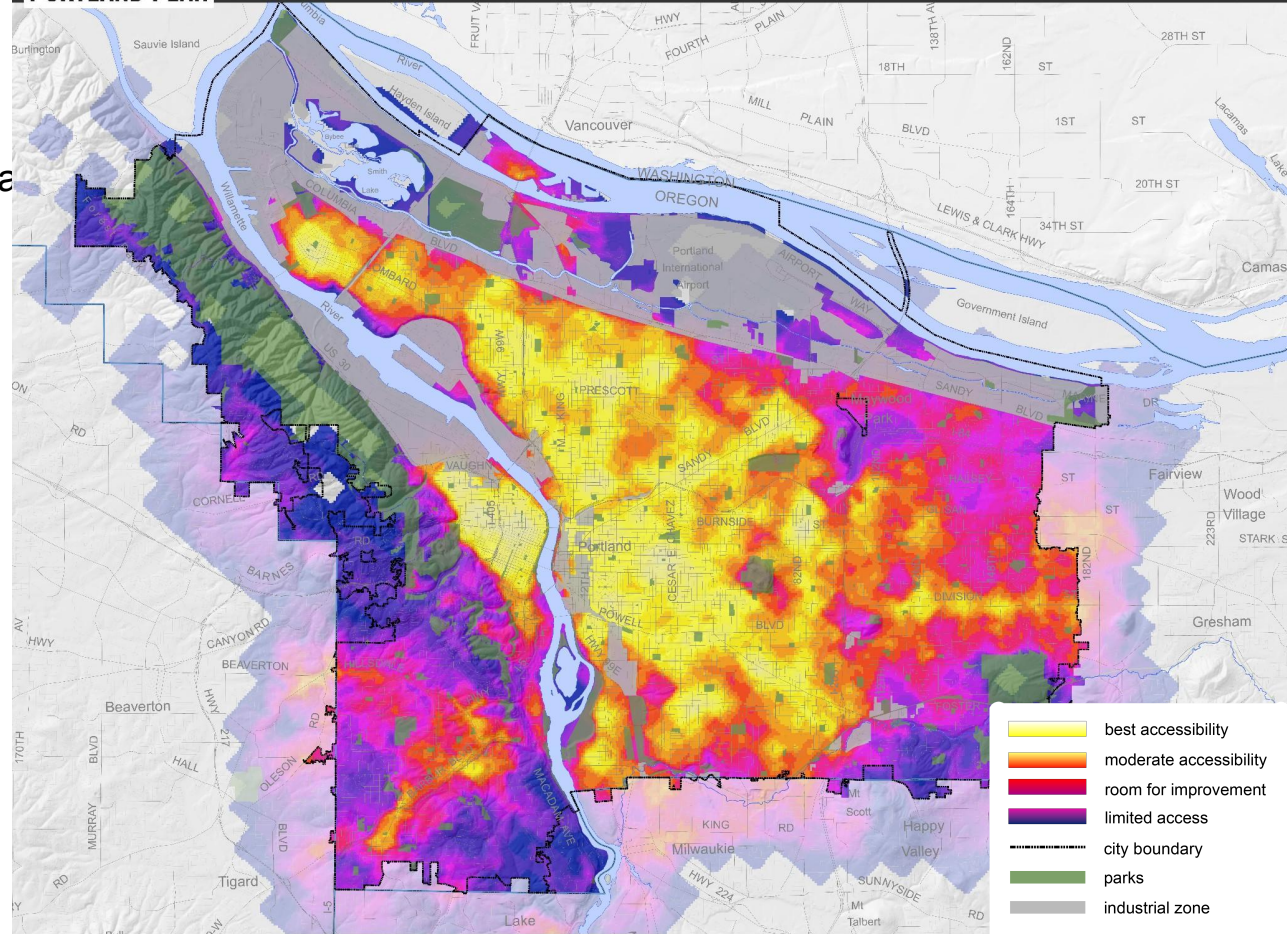
Pedestrians Prioritized

12th most walkable city in the US
(50 largest cities)

In Portland, 57% of residents have a Walk Score of 70 or above.

20-minute neighborhood concept analysis

PORTLAND PLAN



0 1 2 3 Miles

October 1, 2010 City of Portland | Bureau of Planning & Sustainability | Geographic Information System

The information on this map was derived from digital data bases on the City of Portland, Bureau of Planning and Sustainability GIS. Care was taken in incorporation of this map but it is provided "as is". The City of Portland cannot accept any responsibility for errors, omissions, or positional accuracy, and therefore, there are no warranties which accompany this product. However, notification of any errors will be appreciated.

data sources:
City of Portland, Planning & Sustainability;
equal weighted inputs. Version 6.
Detailed documentation available.

Biophilia

Brownfield

Barren
Hardscape

Private Lawns
& Gardens

Some Public
Parks

Park Network

6



Portland

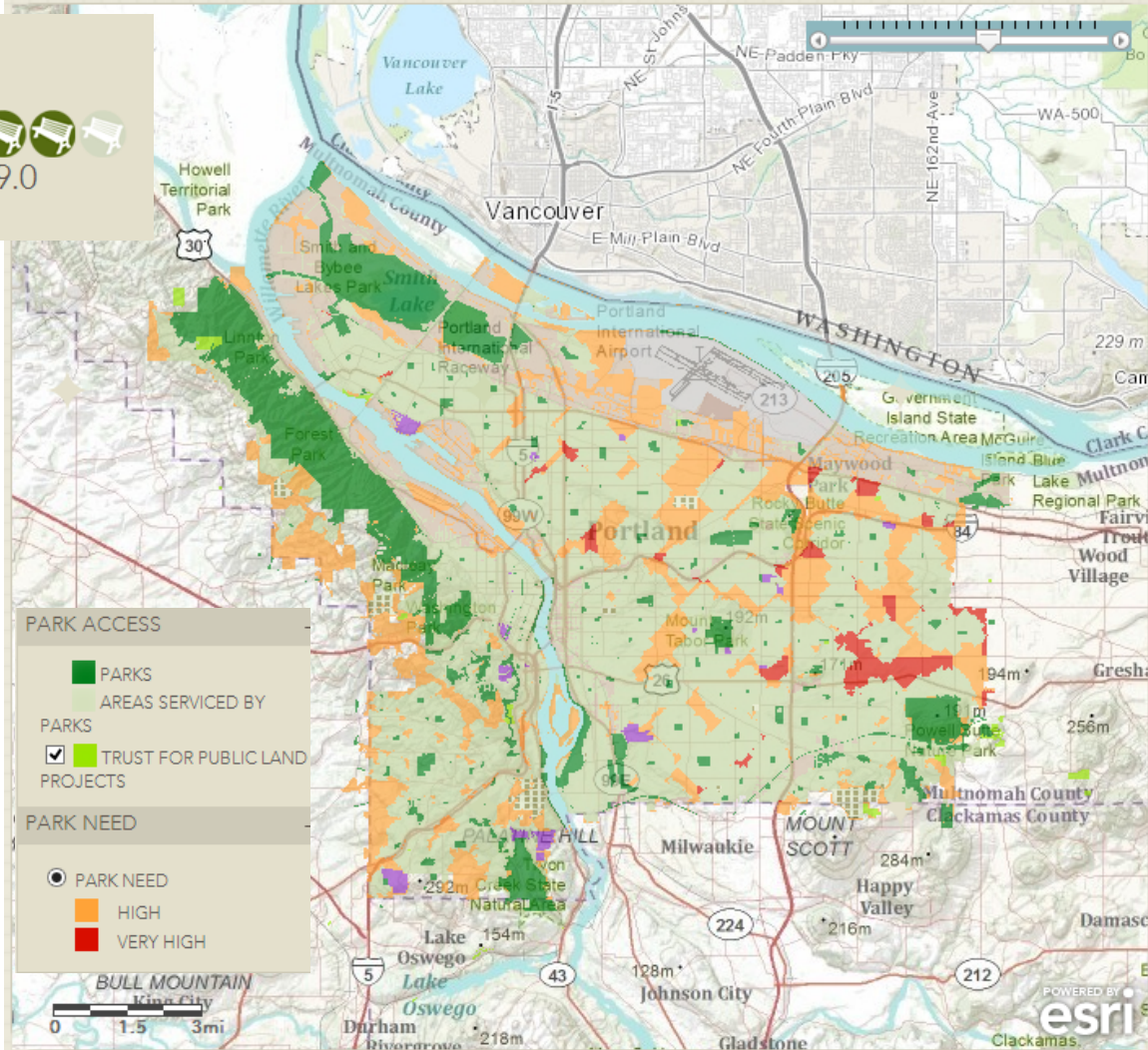


City Stats

- City area: 92,750 acres
- Median park size: 4.8 acres
- Park land as % of city area: 16.2 %
- Spending per resident: \$162.45
- Playgrounds per 10,000: 2.12
- Population density: 6.3 per acre

Park Facts

- Park acreage: 13,864 acres
- People served per park acre: 32
- Oldest park: Chapman Park , est. 1843
- Largest park: Forest Park , 5,157 acres
- Most-visited park: N.A.



Carbon/Energy

| | | | | |
|--------------|--------------|--------------|-----------|------------|
| Wastefulness | Carelessness | Indifference | Awareness | Pro-Planet |
|--------------|--------------|--------------|-----------|------------|

Climate Action Plan ("revised periodically to respond to emerging opportunities, build on successes, and incorporate lessons learned")

40% Carbon Reduction by 2030, 80% by 2050

FIGURE 1.

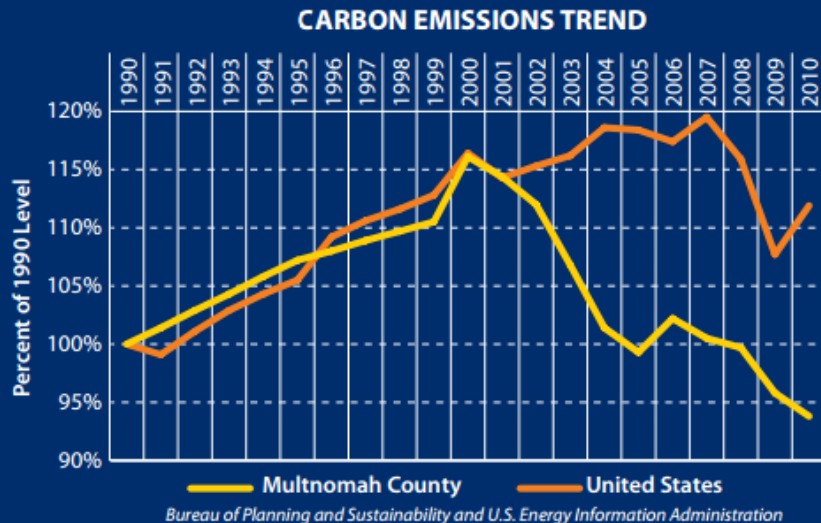
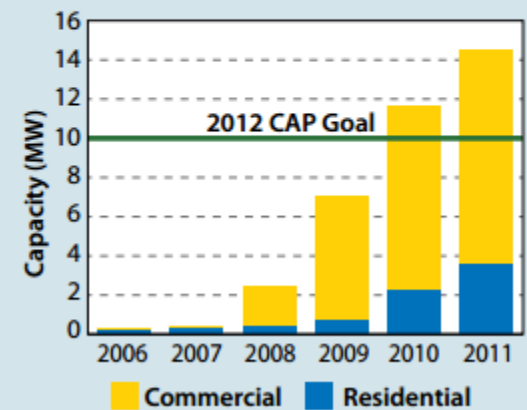


FIGURE 3.

Total Installed Solar PV Capacity in Multnomah County



Metabolism

| | | | | |
|------------------------------------|----------------------------|----------------|----------------|---------------------------------|
| Throughput (Goods in Waste out) | Less than 25% recycling | ~50% recycling | 75%+ recycling | Closed Loop (Waste as Input) |
|------------------------------------|----------------------------|----------------|----------------|---------------------------------|

Portland Recycles! Plan

Increase Recycling Rate to 75% by 2015

Zero growth in waste stream

Make whole system more sustainable

Landfill Use

1998 methane recovery put in place

Wastewater Treatment

Solids recycled into biosolids (fertilizer)

Columbia Boulevard Wastewater Treatment Support Facility LEED Gold

Urban Goats

Goats used to eat overgrown lots in city



Governance

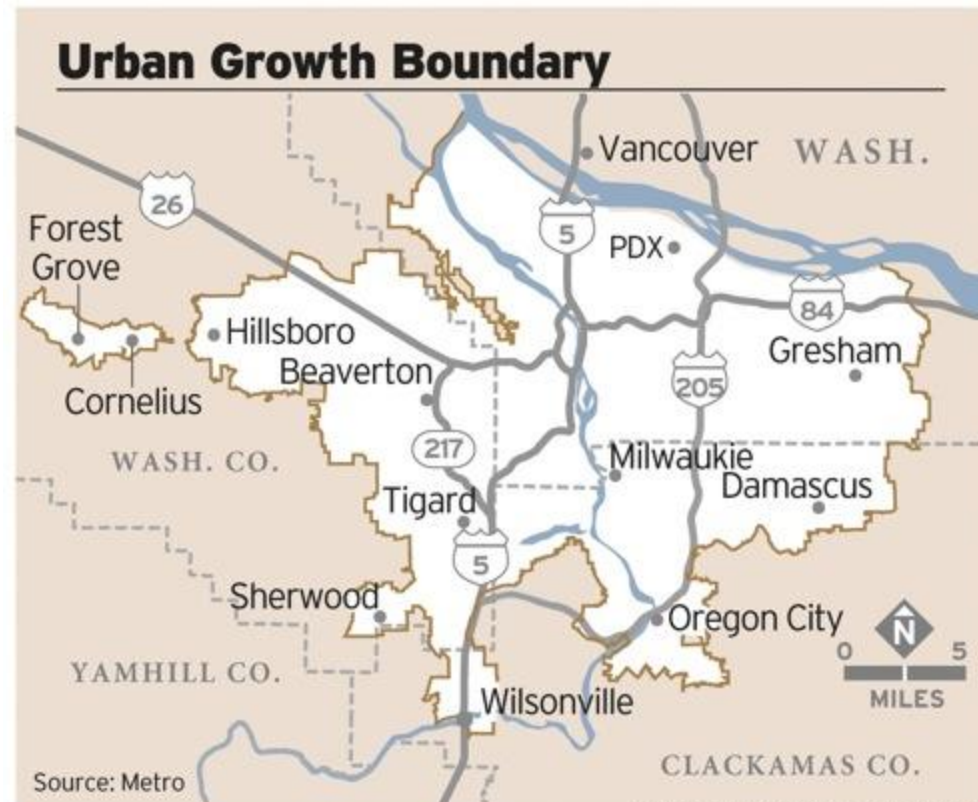
| | | | | |
|-------------|----------|-----------------------------|-------------------------|---------------------------|
| Selfishness | Top-Down | Stakeholders opinion voiced | Some Public Involvement | Cooperation Collaboration |
|-------------|----------|-----------------------------|-------------------------|---------------------------|

Comprehensive plan and other plans are easily accessible online.

Multiple community workshops

Transparency about plans and execution

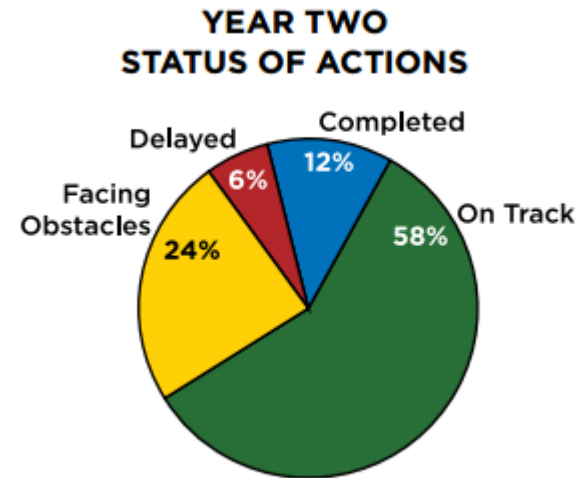
Stick to plans



Planning



Comprehensive Plan
Urban Growth Boundary
Portland Recycles! Plan
Build It Green!
Many Localized Plans
Clean Energy Plan
 Save Energy
 Make Energy
 Think Energy
Climate Action Plan



Culture

| | | | | |
|---------------------------------------------------------|-------------------------------|----------------------------|----------------------------|--------------------------------------------------------|
| Banal Sameness Zero Unique or Interesting Culture | Lack of Cultural Amenities | Some Cultural Amenities | Many Cultural Amenities | Distinct and Unique Cultural Identity Celebrated |
|---------------------------------------------------------|-------------------------------|----------------------------|----------------------------|--------------------------------------------------------|

Sketch Comedy show about
Portland's unique culture

VooDoo Doughnut (need I say more?)

Idiotarod

Zoobomb

Naked Bike Ride



Conclusion

Mobility

| | | | | |
|---------------|---|---------------------------------|---|------------------------|
| Pvt. Car Only | o | You know, like in between stuff | o | Bikes/Transit Networks |
|---------------|---|---------------------------------|---|------------------------|

Walkability

| | | | | |
|---------------|-----------------------------------|----------------------------|---------------------|-------------------------|
| Ped. Barriers | Thoughtless, Unfriendly Sidewalks | Average American Sidewalks | Pedestrian Friendly | Pedestrians Prioritized |
|---------------|-----------------------------------|----------------------------|---------------------|-------------------------|

Biophilia

| | | | | |
|-----------------|------------------|-------------------------|-------------------|--------------|
| Toxic Wasteland | Barren Hardscape | Private Lawns & Gardens | Some Public Parks | Park Network |
|-----------------|------------------|-------------------------|-------------------|--------------|

Carbon/Energy

| | | | | |
|--------------|--------------|--------------|-----------|------------|
| Wastefulness | Carelessness | Indifference | Awareness | Pro-Planet |
|--------------|--------------|--------------|-----------|------------|

Metabolism

| | | | | |
|------------------------------------|-------------------------|----------------|----------------|---------------------------------|
| Throughput (Goods in Waste out) | Less than 25% recycling | ~50% recycling | 75%+ recycling | Closed Loop (Waste as Input) |
|------------------------------------|-------------------------|----------------|----------------|---------------------------------|

Governance

| | | | | |
|-------------|----------|-----------------------------|-------------------------|---------------------------|
| Selfishness | Top-Down | Stakeholders opinion voiced | Some Public Involvement | Cooperation Collaboration |
|-------------|----------|-----------------------------|-------------------------|---------------------------|

Planning

| | | | | |
|---------|---------------------|--------------|----------------|------------------|
| No Plan | Awareness of Issues | Future Goals | Plan Execution | Plan Fulfillment |
|---------|---------------------|--------------|----------------|------------------|

Culture

| | | | | |
|------------------------------------------------------|----------------------------|-------------------------|-------------------------|--------------------------------------------------|
| Banal Sameness Zero Unique or Interesting Culture | Lack of Cultural Amenities | Some Cultural Amenities | Many Cultural Amenities | Distinct and Unique Cultural Identity Celebrated |
|------------------------------------------------------|----------------------------|-------------------------|-------------------------|--------------------------------------------------|

Sources

<http://djcoregon.com/files/2010/12/20-min-heat-map.jpg>

<http://www.newgeography.com/files/cox-portland-transit.png>

<http://abortionsforall.files.wordpress.com/2012/01/portlandia.jpg>

<http://www.portlandoregon.gov/bps/article/393345>

http://farm4.static.flickr.com/3321/3625095073_b83415e437_o.jpg

<http://voodoodoughnut.com/doughnuts.html>

<http://www.oregonmetro.gov/index.cfm/go/by.web/id=24920>

<http://www.portlandoregon.gov/bps/43052>

<http://www.oregonmetro.gov/index.cfm/go/by.web/id=25126>

<http://www.oregonmetro.gov/index.cfm/go/by.web/id=25126>

<http://www.portlandoregon.gov/bes/31031>

<http://www.teamsynergo.com/about/contact-us.php>

<http://inhabitat.com/skylab-architectures-wastewater-facility-for-portland-oregon-aims-for-leed-gold/>

<http://www.portlandoregon.gov/bps/article/393345>

<http://www.oregonmetro.gov/index.cfm/go/by.web/id=24920>

<http://www.portlandoregon.gov/bps/43052>

<http://www.oregonmetro.gov/index.cfm/go/by.web/id=25126>

<http://www.oregonmetro.gov/index.cfm/go/by.web/id=25126>

<http://www.portlandoregon.gov/bes/31031>

<http://www.teamsynergo.com/about/contact-us.php>

<http://inhabitat.com/skylab-architectures-wastewater-facility-for-portland-oregon-aims-for-leed-gold/>

http://en.wikipedia.org/wiki/Category:Culture_of_Portland,_Oregon

<http://www.portlandoregon.gov/bps/>

<http://www.portlandoregon.gov/bps/49989>

<http://www.portlandoregon.gov/bps/41462>

<http://www.portlandmercury.com/portland/oregons-filthy-secret/Content?oid=1782904>

<http://blog.epa.gov/blog/2009/09/where-does-my-electricity-come-from/>

<http://parkscore.tpl.org/city.php?city=Portland>

<http://www.walkscore.com/OR/Portland>

<http://www.portlandonline.com/portlandplan/index.cfm?a=288547&c=52256>

<http://trimet.org/pdfs/publications/factsheet.pdf>

<http://www.thenatureofcities.com/author/mikehouck/>

<http://biophiliccities.org/what-are-biophilic-cities/portland/>

<http://www.bbc.com/travel/feature/20130416-living-in-great-cities-for-public-transport/2>

<http://www.pdx.edu/transportation/portland-bike-share>

<http://www.portlandoregon.gov/transportation/article/370289>

