

# LONDON

1. London Aerial



Arch 580  
Craig, Taylor, Woodhouse

# City Profile:

LOCATION: Europe - United Kingdom - England - London



2. World Map

Coordinates: 51:30:40N 0:07:31W

Altitude: 14m (49ft)

Currency: Pound sterling £ (GBP)

Language: English

Time Zone: Greenwich Mean Time (GMT) - 8hrs ahead  
(London Facts & Figures - Location)



3. England



Inner London Boroughs  
Outer London Boroughs

4. London

# Logistics:

## Founded

London was founded in **43 AD**, by the Romans shortly after they invaded England (Beatley 181).

## Establishment

Today the United Kingdom is made up by four different countries: Northern Ireland, Scotland, England, and Wales. England is comprised of 32 boroughs: 12 plus the City of London in Inner London, and 20 in Outer London. The city of London is the capital.

## Climate

England is know for its **temperate climate** (Beatley 183).

## Population

The population in 2011 was **8,174,000 people** (London Facts & Figures)

## Area

City Area: 1,572 sq. km. (607 sq. mi.)

Metro Area: 8,920 sq. km. (3,444 sq. mi.)

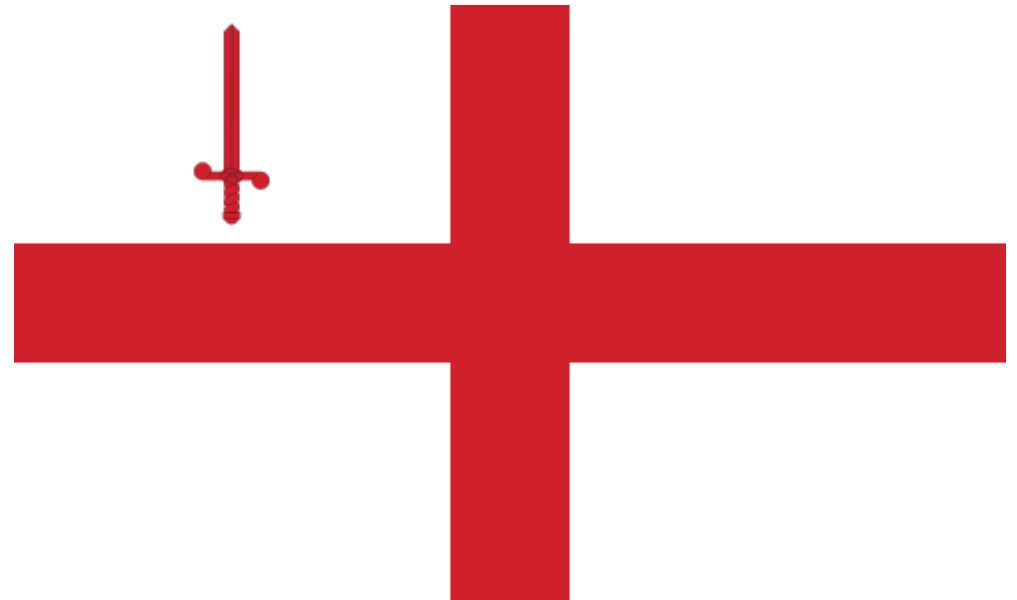
(London Facts & Figures - Population)

## Density

City Density: 4,878 inh./sq. km. (12,634 inh./sq. mi.)

Metro Density: 1,381 inh./sq. km. (3,577 inh./sq. mi.)

(London Facts & Figures - Population)



5. London Flag

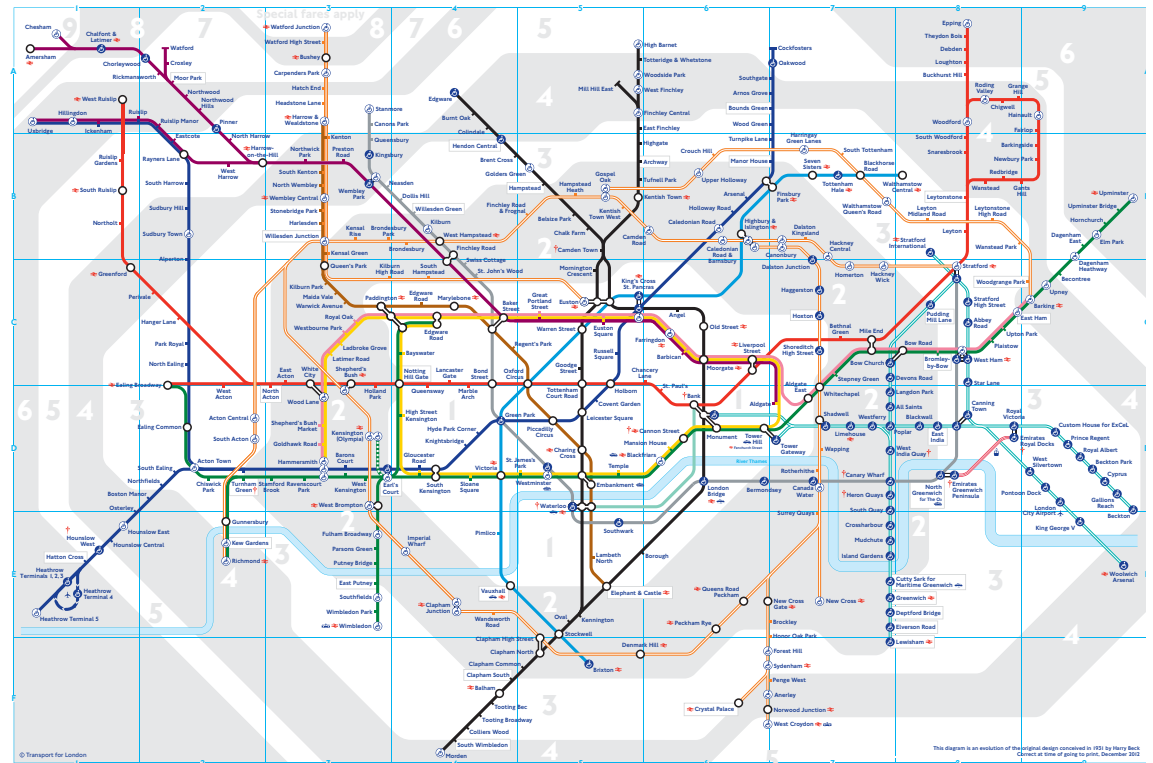
# Mobility:

90% of the 320,000 commuting to the inner square mile of London use one of these forms of public transportation:

- Buses- 40 high frequency bus routes
- London Underground- 7 underground lines
- Railways- 8 stations including 2 light rail stations
- River Services

## CYCLING

- Hold an annual cycling conference
- Goal to see 10% of journeys to and from city to be by cycle.
- Subsidized bike training
- Free maintenance sessions



6. Tube Map

Private car only	Public transport usage 25%>	Public transport usage 50%>	Public transport usage 75%>	100% Bikes/ Transit
------------------	--------------------------------	--------------------------------	--------------------------------	---------------------

# Walkability:

After 1990, in a push to make London more walkable, the City:

- widened the sidewalks
- constructed 2 pedestrian bridges

Hungerford and Millennium Bridge

-planted trees and de-cluttered the streets from trash- all to make walking a better experience

apps such as the “lovethesquaremile” app allow you to report a problem and keep tabs on its progress

Sites such as WALKIT.COM encourage people to walk places with helpful interactive maps

<http://walkit.com/nearby/?city=london&from=Nelson%26rsquo%3Bs+Column&demo=demo1>

Events such as Walk to Work Week also encourage people of London to experience walking with their coworkers

“Legible London” places easy to read totems at key intersections to guide people to their next place of interest.



7. Londoners walk to work



8. Millennium Bridge

Pedestrian barriers, amenities spread out	Some sidewalks, amenities 600m>	Sidewalks/paths to 50% and amenities 600m>	Amenities (600m-300m)	Pedestrian friendly, amenities 300m>
---	---------------------------------	--	-----------------------	--------------------------------------

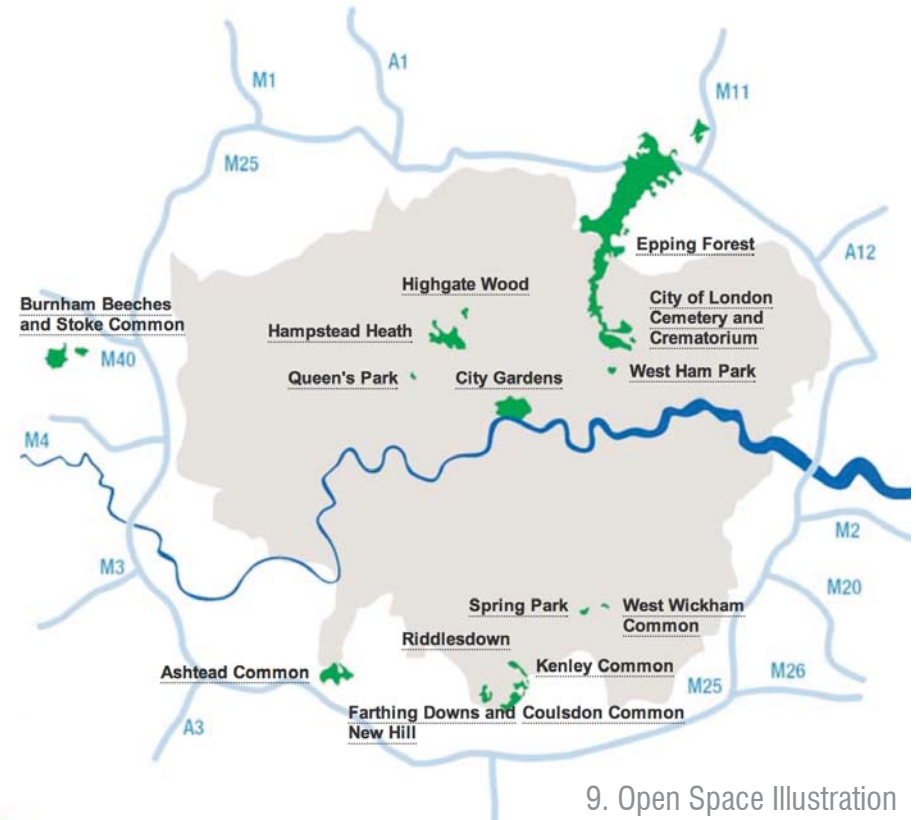
# Biophilia:

- 11,000 acres of open space
- over 200 parks and gardens in the square mile
- 104 acre London Wetland Center on the bank of the Thames

it attracts over 180 different species of birds

largest display of dragonflies and butterflies

- Goal to increase tree coverage from 20% to 25% by 2025 (apprx. 2 million more trees)



9. Open Space Illustration



10. Action group logo



# Carbon / Energy:



## London First

Non-profit organization whose mission is to influence National and local government policies. Seeking a target of 25% decentralised energy by 2025 with collaboration between the Mayor, boroughs and business.

## Government of London

The Mayor's low carbon zones programme RE:CONNECT supported a community approach to cutting the capital's carbon footprint.

- achieving a 60% reduction in London's CO2 by 2025
- ensuring 25% of London's energy is delivered through more efficient decentralised energy by 2025
- improving the energy efficiency of London's homes and buildings
- reducing emissions from transport
- capturing the environmental and economic benefits of making London a low carbon city.

## RE:CONNECT

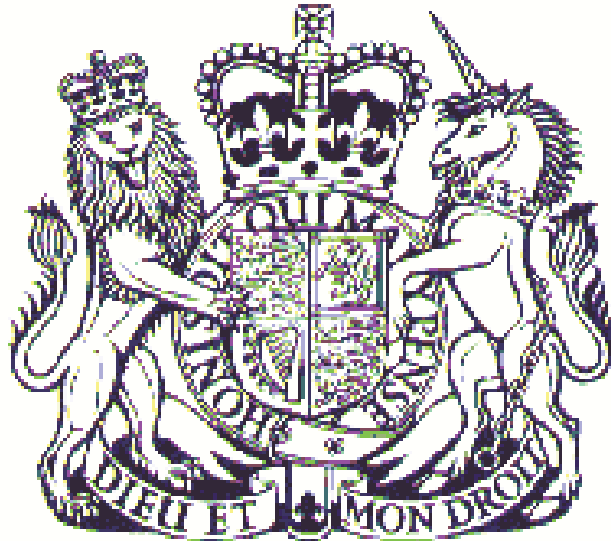
The Mayor's low carbon zones programme RE:CONNECT supported a community approach to cutting the capital's carbon footprint.

Ran between 2009-2012.

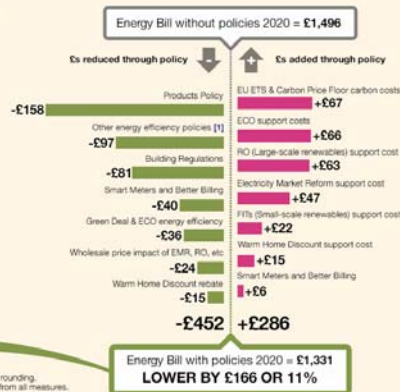
Aim was to cut carbon emissions locally, helping London meet its target of reducing CO2 by 60% by 2025

10 London Boroughs were chosen for government funding to reduce carbon emissions by 20.12% by 2012

- leverage private sector investment into low carbon zones
- show new and innovative ways to reduce energy use
- demonstrate a low carbon future now
- bring together local authorities, community organisations, residents, businesses and utilities companies to work in partnership in a targeted geographical area.



Estimated average impact of energy and climate change policies on household energy bills in 2020



All figures in real £2012 prices. Figures may not add due to rounding. Average bill impacts shown, not all households will benefit from all measures. [1] CSRF, CERT Extension, CSRF and ECO 1&2.

Wastefulness

Admit there is a problem

Coming up with a plan

Carrying though with said plan

Pro-planet (no carbon)

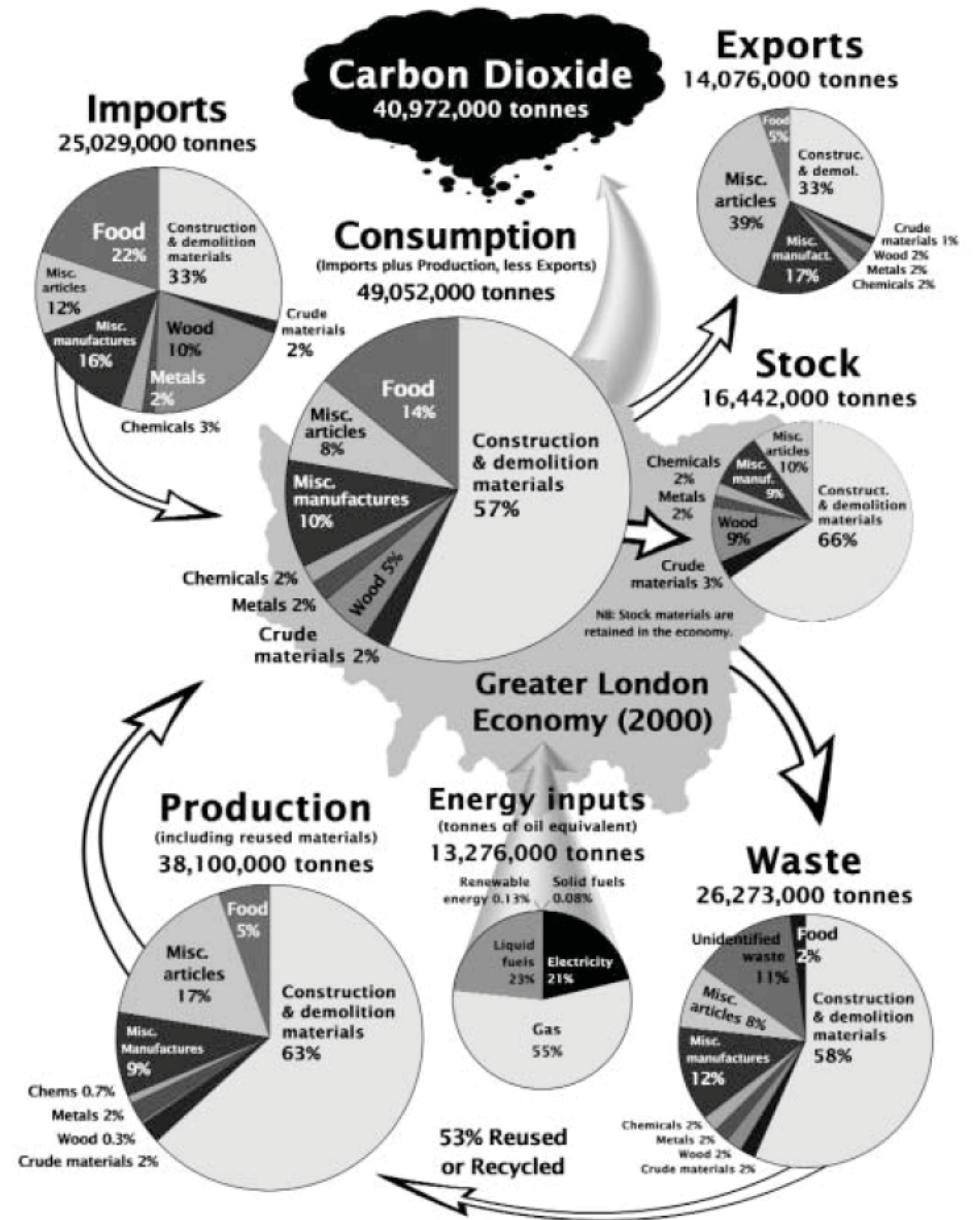
# Metabolism:

Herbert Girardet

Environmental Consultant, UK

	'Unsustainable'	'Towards sustainability'	'Sustainable'
<b>Resource &amp; Land Use</b>	'Factor 1' ~ 2000 <i>Per capita footprint: 6.6 ha</i> = Total ecological footprint ~ 300 x London's surface area	'Factor 2' ~ 2015 <i>Per capita footprint: 3.3 ha</i> = Total ecological footprint ~ 150 x London's surface area	'Factor 4' ~ 2030 <i>Per capita footprint: 1.6 ha</i> = Total ecological footprint ~ 75 x London's surface area
<b>Food</b>	Long distance supply of highly packaged food as norm. Intensive processing. High meat consumption. 30% food waste. Very energy intensive. Only 2% organic, most of this imported. Limited allotment growing and peri-urban fruit and vegetable cultivation.	Reduced long distance supply. Less processing & packaging. Reduced meat consumption. Some food waste recycling. More energy efficient. 30% organic, mostly locally grown. 40% UK grains. 50% increase in allotment growing. 40% peri-urban fruit & vegetable supplies.	Regional supply emphasised. Minimal processing. Low meat consumption. Much food waste recycling. Highly energy efficient. 50% organic, incl. use of sewage. 60% UK grains. A further 30% increase in allotment growing. 60% peri-urban fruit & vegetable supplies.
<b>Water/ sewage</b>	Water from Thames & Lea. High flush toilets, etc. No run-off storage. Single household water system. Little sewage recycling.	'Imported' & London water table. Variable flush toilets as norm. No run-off storage. Efficient household water system. Some sewage recycling.	'Imported' & London water table. Low flush toilets as norm. Substantial run-off storage. Dual household water systems. Routine sewage recycling.
<b>Energy</b>	Dependence on fossil fuels. 18% nuclear. Low building insulation standards. Much use of ineff. appliances. Minimal end use efficiency. Minimal renewable energy.	Reduced fossil fuel /more CHP. /some renewable. Improved building insulation standards. More efficient appliances and increased end use efficiency.	CHP/ solar/ wind/ biomass & fuel cells as main energy technologies. High building insulation standards. Common use of high-efficiency appliances and implementation of high end-use efficiency.
<b>Transport</b>	Emphasis on private transport. Minimal car sharing. Little cycling and walking. Fossil fuel powered transport. Low transport interconnection.	Better transport mix. More shared vehicles. Much cycling and walking. Petrol, electric & fuel cell tr' sport. Good interconnections.	Optimal transport mix. Widespread vehicle sharing. 'Urban village', cycling and walking. Fuel cell & solar-electric transport. Optimal interconnections.
<b>Materials</b>	Wasteful use of materials. Only imported materials. Little product durability. Everything is packaged. Few regional supplies. No regional timber. Unsustainable sources as norm. No consumption limitation.	More local and reused materials. Minimal use of virgin materials. Increasing product durability. Reduction in packaging use. Emphasis on regional supplies. Some regional timber. Sustainable sources common. Some consumption reduction.	Minimal waste of materials. Maximise sustainable sources. High product durability. Minimal packaging. Emphasis on local supplies. Regional timber in common use. Shared use of products. Large consumption reduction.
<b>Waste</b>	Linear system. 8% recycling. Little waste separation. Minimal recycling. Most waste disposed in landfills. Some incineration. No remanufacturing.	Towards a circular system. 25% recycling. Some waste separation: Reduce, reuse, recycle. Restricted landfill disposal. Minimal incineration. New re-manufacturing industries.	Circular system. 75% recycling. Waste separation as norm: Refuse, reduce, reuse, recycle. Remanufacture of metals, glass, paper & consumer waste into new products has become routine.

© Herbert Girardet. 2002 / 2006



Throughput (goods in, waste out)	Wastefulness	Reuse and recycle (at least 50%)	Reuse and recycle (at least 75%)	Closed loop (circular system)
-------------------------------------	--------------	-------------------------------------	-------------------------------------	----------------------------------



# Governance:

## Constitutional Monarchy (United Kingdom)

- Monarch is Head of State (Queen Elizabeth II)
- Prime Minister is Head of Government (David Cameron)

## City of London

- Greater London Authority (GLA) is the administrative body  
Elected 25 member body  
Established in 2000  
Strategic administration of Greater London  
Shares local government powers with the councils of 32 London boroughs and the City of London Corporation  
Based on American mayor system to give the City of London a single person to represent it
- Mayor is directly elected (Boris Johnson)



Selfishness  
(anarchy)

Top down

Working with the  
'people' in mind

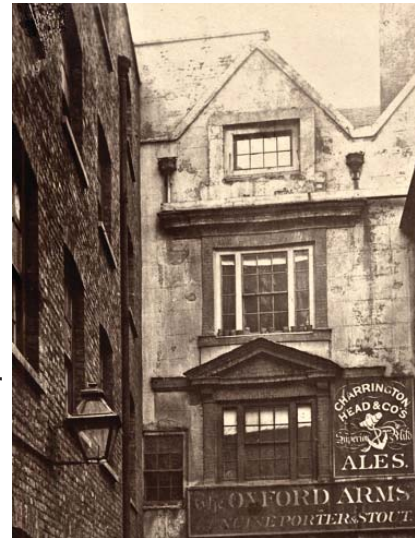
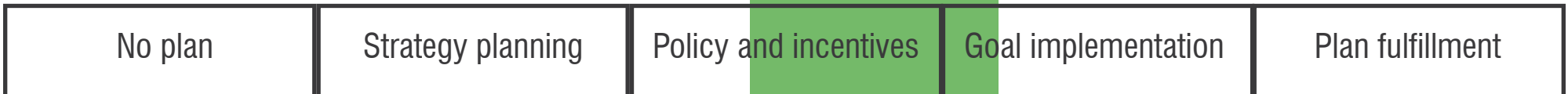
Incentives

Collaboration

# Planning:

- Physical fabric changed due to historical events
  - Great Fire of London in 1666
  - Bombing during WWII
- From 1986 to 2000 London was without a strategic planning government, until the formation of the Greater London Authority (GLA)
- The current planning policy aims for:
  - a city that meets the challenges economic and population growth create,
  - an internationally competitive and successful city with a diverse economy,
  - a city of diverse, strong, secure, and accessible neighborhoods,
  - a city that improves the environment locally and globally, and
  - a city where it is easy, safe, and convenient for everyone
- Implementation seen through:
  - care taken for existing plazas, parks, and gardens

(Beatley 181-187)



19. Wood Construction



20. 1924 London



21. St. James Park, London

Fun Fact! London has 46% of open space areas

# Culture:

- The city has a **high immigration count**, that has been constant since the invasion of the Romans
- Immigrants have come from all over the world.
- Immigrants include: the Saxons, the French, Afro-Caribbeans, and Asian populations
- Today there are over **250 languages** spoken in London by its residents
  
- Cultural celebrations in London include:
  - Notting Hill carnival: celebrates London's multicultural aspect of London, and supports the further development of culture in the city.  
August 28th - 29th (Notting Hill carnival)
  - Chinese New Year: is celebrated with a parade starting from Trafalgar Square to Rupert Street on February 10th. Celebrations continue through the day (Chinese New Year 2013)
  
- Culture is not only seen through events, but also Architecture
  - The Tower of London
  - Kew Gardens
  - St. Margaret's Church
  - Westminster Abbey
  - The Palace of Westminster, and
  - Maritime Greenwich

\*These have been given the status of World Heritage Sites, and are recognized as London's most significant cultural landmarks (Culture of London).



22. Notting Hill, London - Carnival



23. Chinese New Year Celebrations



24. The Tower of London

Self centered	Acknowledged	Accepted	Cultural Diversity	Celebrated
---------------	--------------	----------	--------------------	------------

# Green City Scorecard:

		<b>Mobility</b>		
Private car only	Public transport usage 25%>	Public transport usage 50%>	Public transport usage 75%>	Affordable public transportation
		<b>Walkability</b>		
Pedestrian barriers, amenities spread out	Some sidewalks, amenities 600m>	Sidewalks/paths to 50% and amenities 600m>	Amenities (600m-300m)	Pedestrian friendly, amenities 300m>
		<b>Biophilia</b>		
Brown field	Private lawns and gardens	Some public parks	Park network	Extensive greenery
		<b>Carbon / Energy</b>		
Wastefulness	Admit there is a problem	Coming up with a plan	Carrying though with said plan	Pro-planet (no carbon)
		<b>Metabolism</b>		
Throughput (goods in, waste out)	Wastefulness	Reuse and recycle (atleast 50%)	Reuse and recycle (atleast 75%)	Closed loop
		<b>Governance</b>		
Selfishness (anarchy)	Top down	Working with the 'people' in mind	Incentives	Collaboration
		<b>Planning</b>		
No plan	Strategy planning	Policy and incentives	Goal implementation	Plan fulfillment
		<b>Culture</b>		
Self centered	Acknowledged	Accepted	Cultural Diversity	Celebrated

# Works Cited:

## BOOK

Beatley, Timothy. *Green Cities of Europe: Global Lessons on Green Urbanism*. Washington, DC: Island, 2012. Print.

## WEB

"About London First." London First. N.p., n.d. Web. 15 Apr. 2013. <<http://londonfirst.co.uk/>>.

"Chinese New Year 2013." London. N.p., n.d. Web. 15 Apr. 2013. <<http://www.timeout.com/london/festivals/chinese-new-year-2013>>.

"Corporate Governance and Performance." Corporate Governance and Performance. N.p., n.d. Web. 16 Apr. 2013. <<http://www.cityoflondon.gov.uk/about-the-city/how-we-work/corporate-governance-and-performance/Pages/default.aspx>>.

"Greater London Authority." Developing Low Carbon Zones to Help Cut Local Emissions. N.p., n.d. Web. 16 Apr. 2013. <<http://www.london.gov.uk/priorities/environment/tackling-climate-change/developing-low-carbon-zones-to-help-cut-local-emissions>>.

"Government." Wikipedia. Wikimedia Foundation, 16 Apr. 2013. Web. 18 Apr. 2013. <<http://en.wikipedia.org/wiki/Government>>.

"How to Measure a City's Metabolism." - IEEE Spectrum. N.p., n.d. Web. 18 Apr. 2013. <<http://spectrum.ieee.org/computing/networks/how-to-measure-a-citys-metabolism>>.

"London Facts & Figures." London Facts & Figures. N.p., n.d. Web. 12 Apr. 2013. <<http://www.aviewoncities.com/london/londonfacts.htm>>. cityoflondon.gov.uk "services" and "things to do"

"Notting Hill Carnival |." RSS. N.p., n.d. Web. 15 Apr. 2013. <<http://travel.rentholidayapartmentlondon.co.uk/notting-hill-carnival/>>.

## IMAGES

1. <http://www.dailymail.co.uk/travel/article-2225278/The-Shard-The-view-roof-Londons-new-skyscraper-takes-shape.html>
2. <http://www.preferential.co.uk/media/6511/blankmap-world-continent.png>
3. [http://mapsofworld.himmera.com/maps/England\\_Political\\_Map\\_2\\_big.gif](http://mapsofworld.himmera.com/maps/England_Political_Map_2_big.gif)
4. <http://hidden-london.com/miscellany/london-boroughs-map/>
5. <http://www.flags-and-anthems.com/media/flags/flagge-london.gif>
6. <http://www.tfl.gov.uk/assets/downloads/standard-tube-map.pdf>
7. <http://walkit.com/walking-to-work/walk-to-work-week/>
8. [http://hhollick.com/v-web/b2/images/millennium\\_bridge.jpg](http://hhollick.com/v-web/b2/images/millennium_bridge.jpg)
9. <http://www.cityoflondon.gov.uk/things-to-do/green-spaces/Pages/interactive-map.aspx>
10. [http://www.london.gov.uk/sites/default/files/re\\_leaf\\_logo\\_435\\_200px.jpg](http://www.london.gov.uk/sites/default/files/re_leaf_logo_435_200px.jpg)
11. [https://encrypted-tbn3.gstatic.com/images?q=tbn:ANd9GcRBrAtYuD3qzqfHCW4Y7zAR5GcZ5981gMXfyB6zpBrDMuZK\\_Q28](https://encrypted-tbn3.gstatic.com/images?q=tbn:ANd9GcRBrAtYuD3qzqfHCW4Y7zAR5GcZ5981gMXfyB6zpBrDMuZK_Q28)
12. <http://www.techdigest.tv/government%20logo.gif>
13. <https://evbdn.eventbrite.com/s3-s3/eventlogos/4079014/reconnectbanner.jpg>
14. [https://assets.digital.cabinet-office.gov.uk/government/uploads/system/uploads/image\\_data/file/8181/DECC\\_Infographic1\\_2013\\_hifi\\_A8\\_v3.jpg](https://assets.digital.cabinet-office.gov.uk/government/uploads/system/uploads/image_data/file/8181/DECC_Infographic1_2013_hifi_A8_v3.jpg)
15. <http://upload.wikimedia.org/wikipedia/commons/thumb/2/29/London-boroughs.svg/489px-London-boroughs.svg.png>
16. <http://www.royal.gov.uk/HMTQ%20Landing%20Page%20Burnley.jpg>
17. <http://upload.wikimedia.org/wikipedia/commons/8/80/Official-photo-cameron.png>
18. [http://upload.wikimedia.org/wikipedia/commons/3/39/Boris\\_Johnson\\_-\\_opening\\_bell\\_at\\_NASDAQ-14Sept2009-3c\\_cropped.jpg](http://upload.wikimedia.org/wikipedia/commons/3/39/Boris_Johnson_-_opening_bell_at_NASDAQ-14Sept2009-3c_cropped.jpg)
19. <http://2.bp.blogspot.com/-G3rc6E6IRBo/UHVUVifaSWI/AAAAAAB0ZU/XoavkapuJh0/s1600/At+the+entrance+to+the+Oxford+Arms.jpg>
20. <http://www.christopherfowler.co.uk/blog/wp-content/uploads/2010/02/1924-London.jpg>
21. [http://s3.freefoto.com/images/31/06/31\\_06\\_4\\_web.jpg](http://s3.freefoto.com/images/31/06/31_06_4_web.jpg)
22. <http://www.timeout.com/london/festivals/chinese-new-year-2013>