



Coat of Arms



HEL SINKI



FINN
AND

Intro: Finland

Gains Independence

Universal women's independence

1900

Aalto



Pori Church

Finland to Russia from Sweden

1800

1700



Petajavesi Church

1600

1500

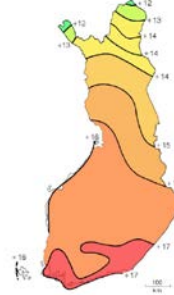
1400

1300



Raasepori Castle 13th cen.

Winter vs. Summer



Agriculture



Farming



<http://bertmaes.wordpress.com/2010/02/24/why-is-education-in-finland-that-good-10-reform-principles-behind-the-success/>

Helsinki: History



King Gustav Vasa



Becomes Capital of Finland

Industrial and economic growth

1500

1600

1700

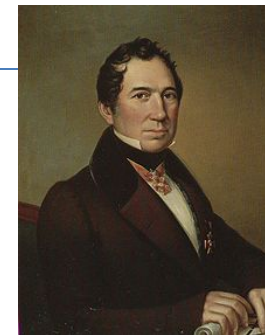
1800

1900

2000



Suomenlinna: Fortress island of Helsinki



Carl Ludvig Engel.

Mobility



| | | | | | |
|--|--|---|--|---|---|
| 10 | 4T | 3T | 7B | 9 | 15 |
| Katamokka - Terminiemi - Munkkiniemi Stadion (Terminiemi) - Munkkiniemi | Kaupatori - Käpylä Säntörget - Kottby | Kaupatori - Töölö - Pasila (asema) - Sanaatorni Sanaatorni - Töölö - Bole (station) - Sanaatorni | Kuusisaari - Töölö - Arabia Kuusisaari - Töölö - Arabia | Läskentienmäki - Kamppi - Kallio - Itä-Pasila Västra terminien - Kampen - Bergsby - Östra Bole | Ruoholahti - Salviaari Gräsåviken - Sunholm |
| 4 | 1A | 5 | 7A | 16 | 17 |
| Katamokka - Munkkiniemi Finlandia - Munkkiniemi | Eira - Käpylä Eira - Kottby | Kulturipää (ons - frie) Töölö - Kamppi - Rautatieasema - Linjat Kulturipää - Arabia Sanaatorni - Arabia | Sanaatorni - Töölö - Pasila (asema) - Sanaatorni Sanaatorni - Pasila (asema) - Töölö - Sanaatorni Sanaatorni - Bole (station) - Töölö - Sanaatorni | Kuusisaari - Lillaström Kuusisaari - Lillaström | Kuusisaari - Kamppi - Viiskulma Kuusisaari - Kamppi - Färnsten |
| 3T | 6 | 7A | 7B | 15 | 24 |
| Katamokka - Munkkiniemi Finlandia - Munkkiniemi | Kaupatori - Käpylä Säntörget - Kottby | Sanaatorni - Töölö - Pasila (asema) - Sanaatorni Sanaatorni - Töölö - Bole (station) - Sanaatorni | Kuusisaari - Töölö - Arabia Kuusisaari - Töölö - Arabia | Ruoholahti - Salviaari Gräsåviken - Sunholm | Merikatu - Seurasaarit Merikatu - Seurasaarit |

HKL Tram



HKL Metro

Walkability

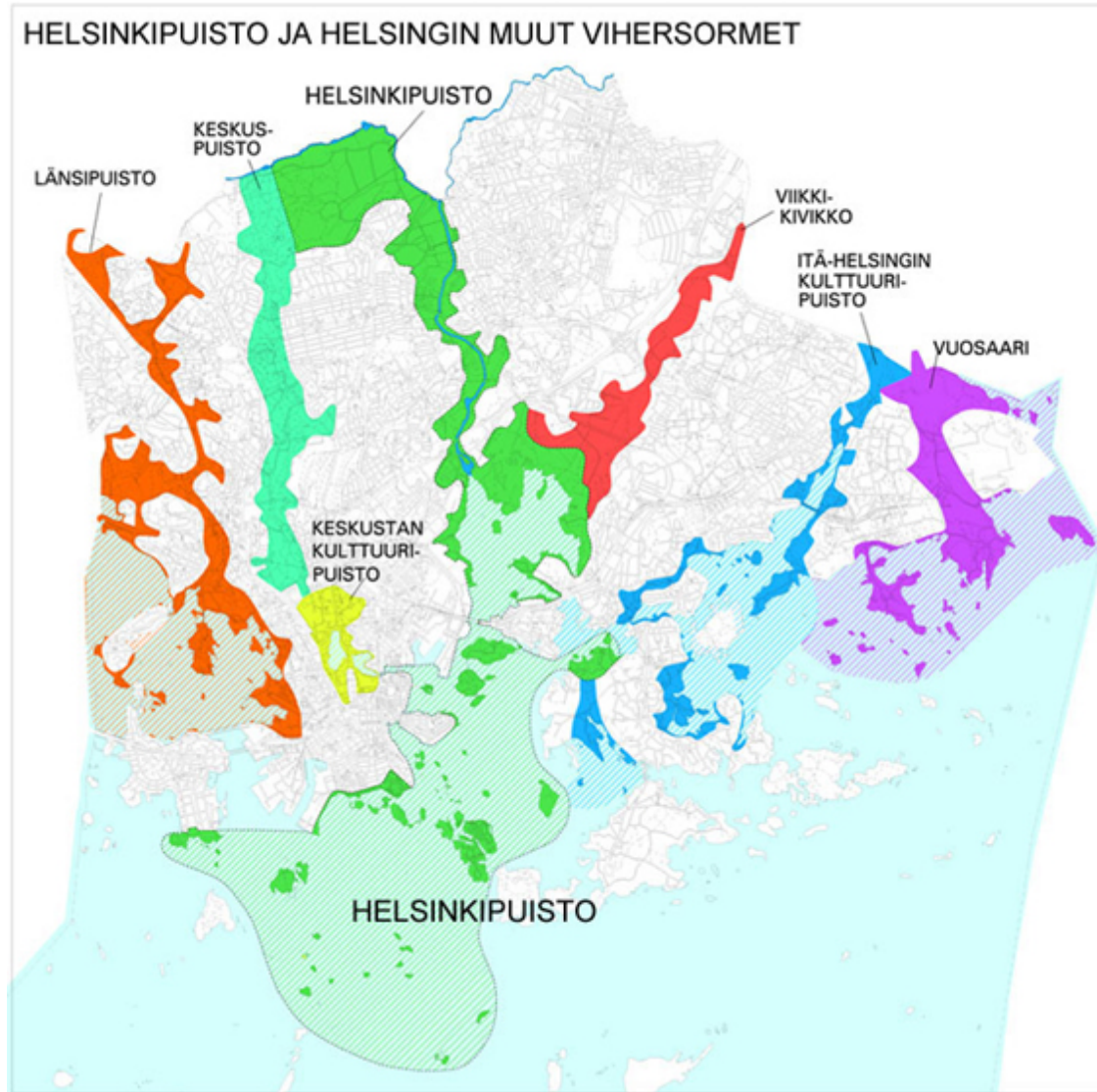


Recreation



Walking/Cycling

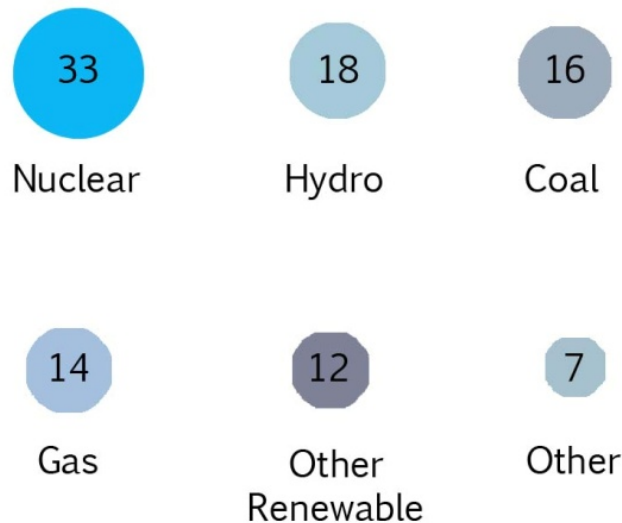
Biophilia



Carbon/Energy

electricity generation

(% of power sources)



| Type of emission/year | 2011 | 2010 | 2000 | 1990 |
|------------------------|------|------|------|------|
| Carbon dioxide g/kWh | 250 | 260 | 260 | 400 |
| Sulphur dioxide mg/kWh | 160 | 180 | 230 | 1520 |
| Nitrogen oxides mg/kWh | 350 | 390 | 310 | 1470 |
| Particulates mg/kWh | 11 | 10 | 22 | 200 |

Metabolism



- 1 million tons of waste generated each year
- 50% of waste generated is used again in some capacity

Governance



Sauli Niinistö - President

Parliament:

9 parties with seats that total 200

- Social Democratic Party
- Centre Party
- National Coalition Party

President:

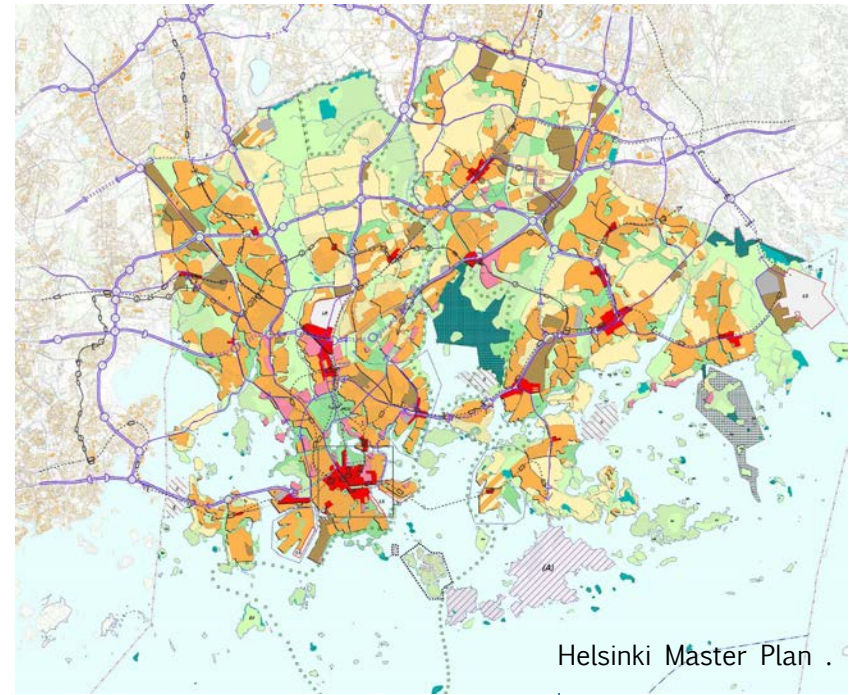
• Elected by direct popular vote for maximum of two 6 year terms.

- Chooses prime minister
- Powers are limited

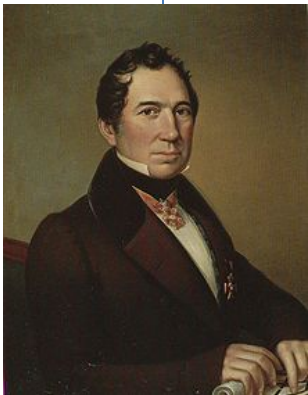
Planning



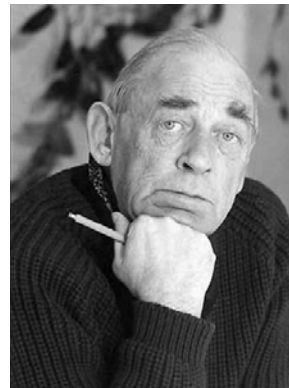
Eliel Saarinen



Helsinki Master Plan .



Carl Ludvig Engel.



Alvar Aalto

Helsinki City Plan

Culture



| | Green | City | Scorecard | |
|------------------------------------|------------------|------------------------------|-------------------|--|
| Individual Isolated Reactive | | | | Collaborative Integrated Networked |
| | | Mobility | | |
| Pvt. Car Only | o | o | o | Bikes/Transit Networks |
| | | Walkability | | |
| Ped. Barriers | o | o | o | Ped. Friendly |
| | | Biophilia | | |
| Brownfield | Barren Hardscape | Private Lawns and Gardens | Some Public Parks | Park Network |
| | | Carbon/Energy | | |
| Wastefulness | o | o | Incentives | Pro-Planet |
| | | Metabolism | | |
| Throughput (Goods in Waste Out) | o | o | o | Closed Loop (Waste as Input) |
| | | Governance | | |
| Selfishness Anarchy | Top-Down | o | o | Cooperation Collaboration |
| | | Planning | | |
| No Plan | o | Future Goals | o | Plan Fulfillment |
| | | Culture | | |
| Fear of Others | o | o | o | Celebrated Diversity Valued |

Helsinki Green Rating:

4.4!



Yessss!

Images Cited

Coat of Arms: <http://en.wikipedia.org/wiki/Helsinki>

Helsinki Skyline: http://conorroggers.files.wordpress.com/2012/10/vk27_helsinki_skyline-1.jpeg

Uspenski Cathedral: <http://hdrcreme.com/photos/30957-Uspenski-Cathedral>

Raasepori Castle: <http://www.flickr.com/photos/koideine/3792495212/>

Pori Church: <http://www.my-world-travelguides.com/pori-finland.htm>

Petajavesi Church: <http://www.destination360.com/europe/finland/petajavesi-church>

Winter vs. Summer: Rikkinen

Wheat: <http://www.natureplanet.info/Golden-yellow-wheat-wallpapers-1920x1200/Golden-yellow-wheat-wallpapers-1920x1200-01>

Oats: <http://grainplacefoods.com/store/favorite-five/favorite-fivetm-mixed-grains.html>

Grass and Fodder:

http://www.dardni.gov.uk/ruralni/index/publications/press_articles/diary_press_articles_2009/dairy_press09/managing_spring_born_replacement_heifers_at_grass.htm

Grassland: <http://www.kazakhstanbirdtours.com/habitats.html>

Farming: Rikkinen

King Gustav Vasa: <http://swedishmadeeasy.com/vasaloppet.html>

Suomenlinna: http://www.suomenlinna.fi/en/fortress/world_heritage_site

Carl Ludvig Engel: http://en.wikipedia.org/wiki/Carl_Ludvig_Engel

HKL Tram: <http://www.hel.fi/hki/HKL/en/HKL+Tram>

HKL Metro: <http://www.hel.fi/hki/HKL/en/HKL+Metro>

Green Fingers:

http://www.hel.fi/wps/portal/Kaupunkisuunnitteluvirasto/Artikkeli?url=Hki:path:/Ksv/fi/Ajankohtaiset+suunnitelmat/Projektialueet/HelsinkiPuisto/Etusivu_rajaus¤t=true

Alvar Alto: <http://mit81.com/baker/content/alvar-aalto>

Eliel Saarinen: <http://blog.smow.com/tag/florence-knoll/>

Works Cited

- Beatley, Timothy, ed. Green Cities of Europe. Washington: Island Press, 2012.
- Klinge, Matti and Laura Kolbe. Helsinki: Daughter of the Baltic. Helsinki: Otava Publishing, 1999.
- Kolbe, Laura. Portraying Finland: Facts and Insights. Helsinki: Otava Publishing, 2005.
- Quantrill, Malcolm. Finnish Architecture and the Modern Tradition. London: E & FN Spon, 1995.
- Richards, J.M. 800 Years of Finnish Architecture. London: David & Charles Publishers, 1978.
- Rikkinen, Kalevi. A Geography of Finland. Lahti: University of Helsinki, 1992.
- Symington, Andy and Fran Parnell. Finland. Singapore: Lonely Planet, 2012.
- Tapaninen, Jaakko. Finland: The Northern Experience, New Europe and the Next Millenium. Helsinki: Tammi, 1999.

<http://www.britannica.com/EBchecked/topic/249778/Gustav-I-Vasa>

<http://en.wikipedia.org/wiki/Helsinki>

http://en.wikipedia.org/wiki/Alvar_Aalto

<http://www.suomenlinna.fi/en/fortress>

http://www.helen.fi/ymparisto_eng/tuotantoseloste.html