

Anne Thorne Architects Partnership

Background and Education:

Anne Thorne has been practicing for 25 years and established Anne Thorne Architects Partnership in 1991. She has focused on how women shape the built environment as both users and designers.



The Anne Thorne Team
www.annethornearchitects.co.uk

Design Philosophy:

- Design for sustainable communities and a sustainable environment
- Architecture should improve the quality of peoples' lives. This is best accomplished by working closely with both clients and the users
- Protecting both occupants and those outside the building by developing healthy and environmentally sound solutions to design and specification. In other words, it is vital to pay attention to how the building affects its surrounding environment as well as how individual components support the whole.



Tree House Nursery
annethornearchitects.co.uk

Important Green Building Summary:

Boatemah Walk in Angell Town

Rated 'Excellent' by Eco-Homes Refurbishment of 1970's estate that had become crime ridden. The goals were to improve safety, sustainability and re-integrate this community into the fabric of the city. Overall, this project reduced residents' energy bills by 50%.

Sustainable features:

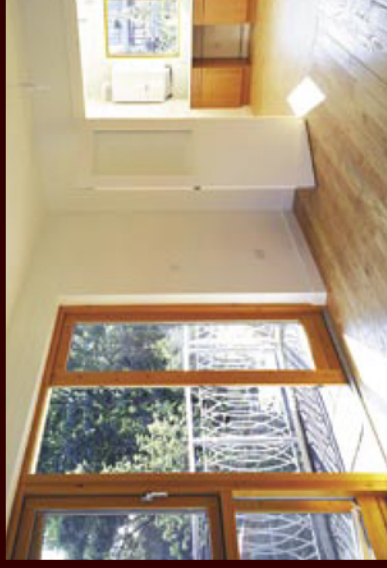
Pre-fabricated timber frame construction--a minimum of 70% came from a certified source, recycled newspaper (Warmcell) cellulose insulation, integrated soft film photovoltaic roof, rainwater collection (from PV roof) to flush toilets, flow regulators and dual flush toilets, argon filled glazing, passive ventilation, and 'natural and non-toxic materials'.



www.newbuilder.co.uk/bffmag



www.newbuilder.co.uk/bffmag



Deck, living room and kitchen



All flats face South

References:

Anne Thorne Architects Partnership website:
www.annethornearchitects.co.uk

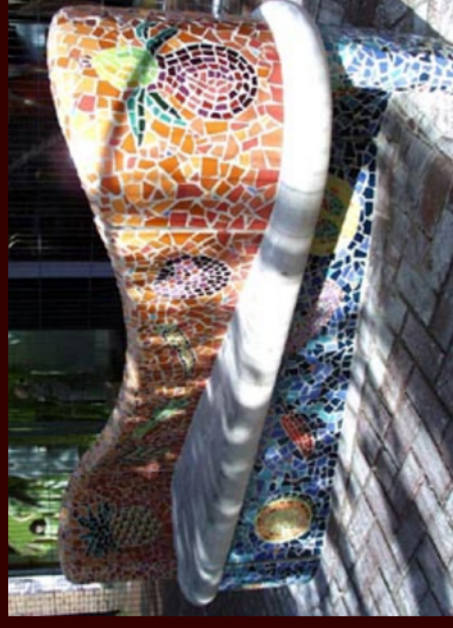
Building for a Better Future website:
www.buildingforafuture.co.uk



Aldgate Subways--future project



Concordia Community Enterprise Centre

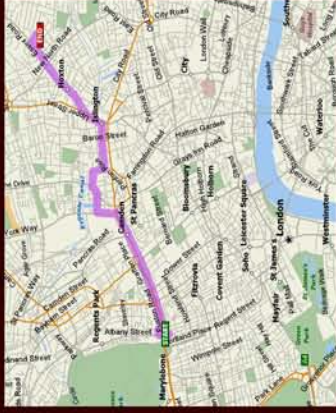


Urban renewal

Office Location & Map

Address:
110 Elmore St
London, UK
NI 3AH

Distance from ISH:
3.27 miles



www.mapquest.com



www.annethornearchitects.co.uk

Tube From ISH:
Walk to Warren St. Station
Take the Victoria Line towards
Walthamstow Central
Get off at Highbury & Islington
Total Trip Time: 43 min.



www.tfl.gov.uk/tfl/pdfs/colourmap.pdf