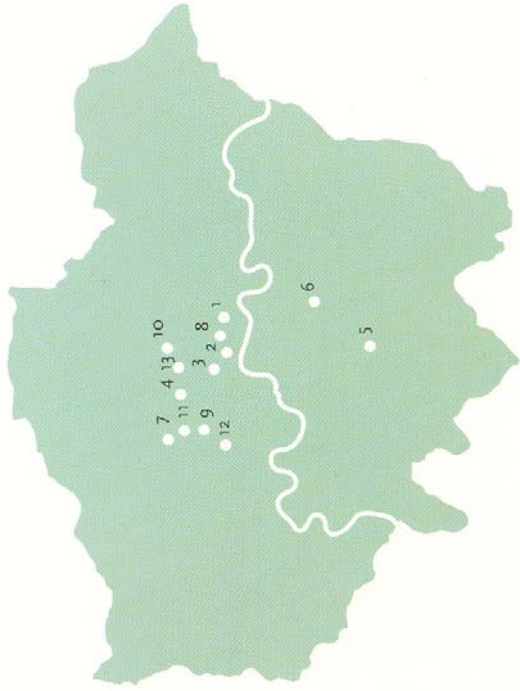


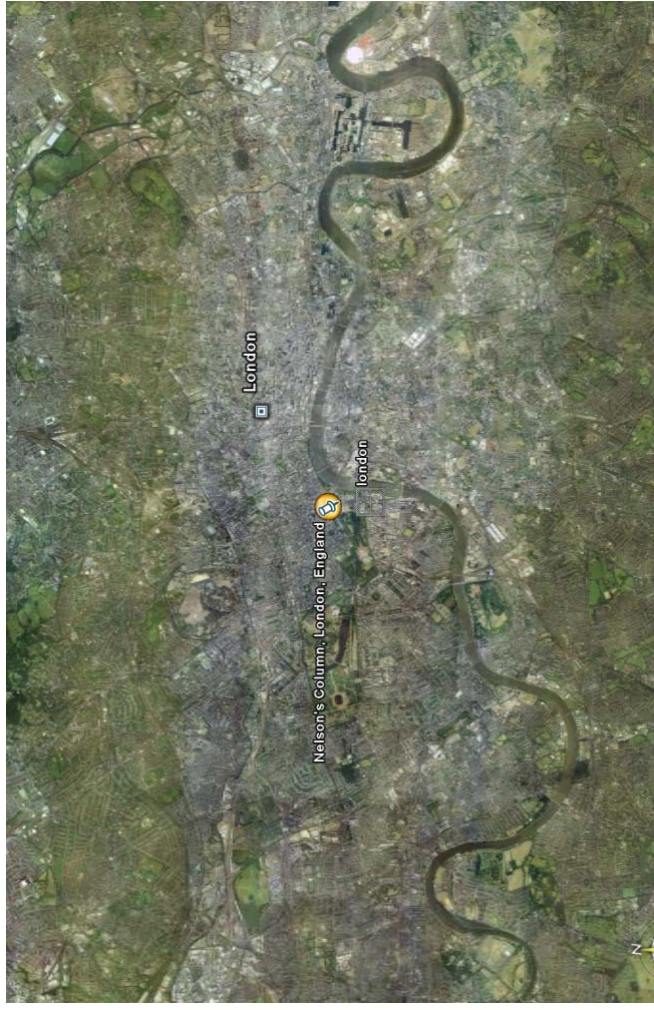
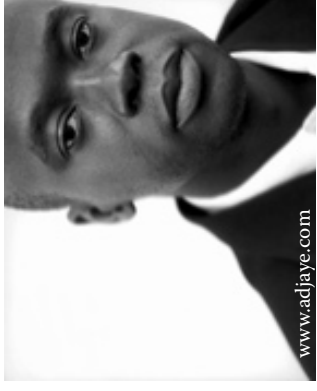
David Adjaye

David Adjaye was born in Dar-Er-Salam, Tanzania in 1966. He then moved to London later in his life and in 1993 received his MA Arch from the Royal College of Art.

Having his architectural practice in London many of his published works are located in and around the city. Most of those are private residences, with a large portion of those being that of artists.



- 1 Elektra House
- 2 Dirty House
- 3 Fog House
- 4 Lost House
- 5 Pottery Shed
- 6 Concrete Garden
- 7 Glass House
- 8 Ofili House and Studio



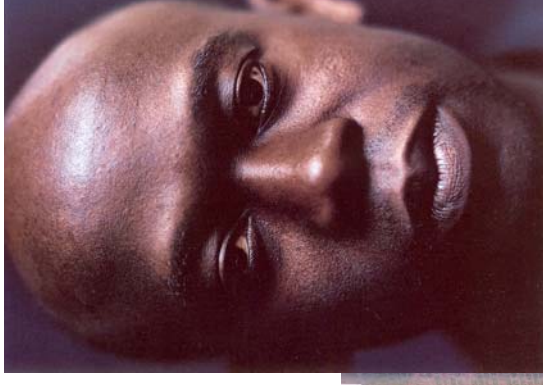
In 1994 Adjaye formed a partnership and in 2000 reformed his office to become Adjaye/Associates. His previous jobs and training have come from David Chipperfield Architects and Eduardo Souto de Moura Architects.

Design Philosophy

Adjaye is well known for his adaptation of older buildings to become new contemporary works of architecture. Almost all of the houses featured in his book comprise of adaptive reuse designs.

Very prominent in his designs is the use of daylight. Glazing is strategically used throughout both for aesthetic reasons and optimal daylighting of the spaces within.

Other design strategies he employs is the usage of natural ventilation. Many of the houses featured in his book have exterior glazed walls that completely open into the house. This allows the outdoors to be brought in and the indoors to be brought out. Creating a dialog between the built and natural environments is very obvious in the designs.



Public and cultural projects that have recently been designed by Adjaye and are still under construction including Rivington Place in London and the Museum of Contemporary Art in Denver, Colorado also explore the possibilities of daylight spaces.

Projects

2000- Elektra House - London

2000- CABA offices - London

2001- Masato Nakamura at Selfridges- London

2001- KPG House - London

2001- Swarovski House - London

2002 - Dirty House - London

2002- Glass House - London

2002- Brown's Focus (retail boutique)- London

2003 - II-29 Fashion Street - London

2003- BAR House - London

2003- Frieze Art Fair - London

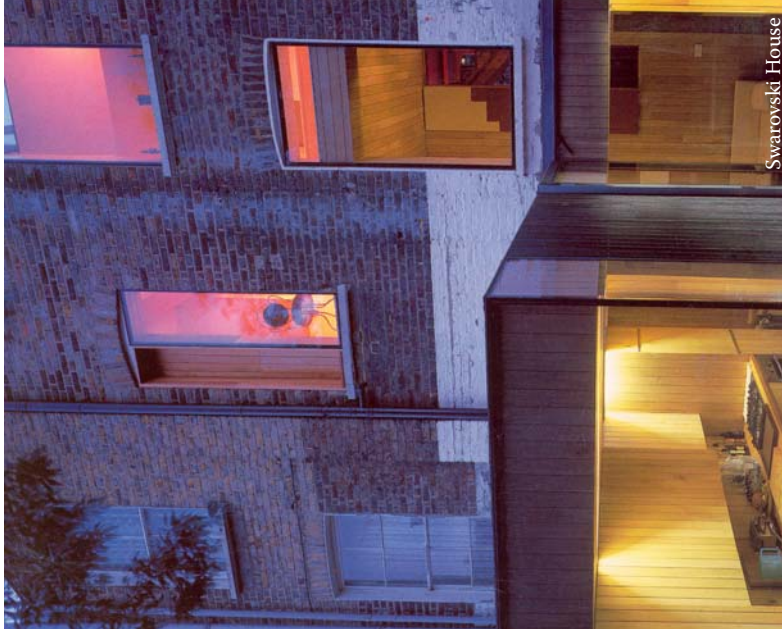
2004 - Fog House - London

2004- Idea Store Chiswick Street - London

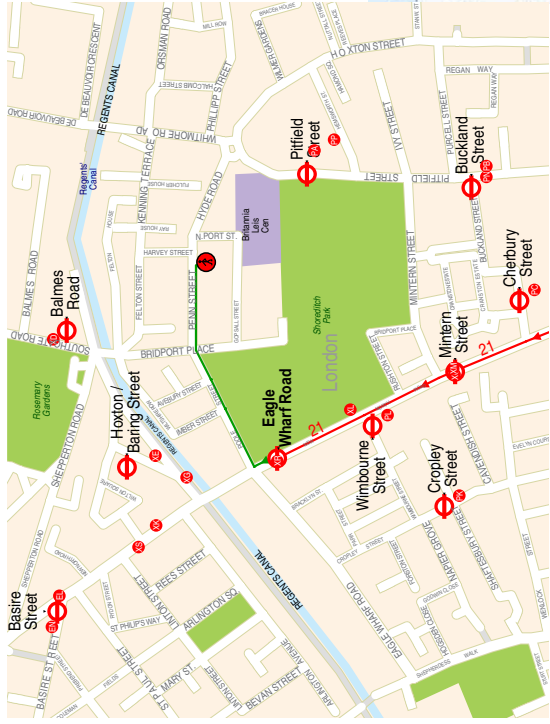
2005 - Nobel Peace Center - Oslo, Norway

2007- Rivington Place - London

2007- Museum of Contemporary Art - Denver



Directions



© 2003 NAVTEQ/PTV AG/Map&Guide
www.tfl.gov.uk/tube/

Walking to the Metropolitan line on Great Portland street from ISH you will head towards Aldgate. Stop at Moorgate Station and take Bus 141 towards North Circular Rd/Green Lines. From there it is a short walk to the Adajye Associates Office. The total journey should take around 45 minutes.

Time	Details	Maps	Information
18:56	start Walk to Great Portland Street	start map end map	Transfer time: 4 mins
19:00	Great Portland Street Take the Metropolitan Line towards Aldgate or Circle Line towards King's Cross St. Pancras or Hammersmith & City Line towards King's Cross St. Pancras	start map end map area map	Av journey time: 10 mins
19:10	Moorgate Station Stop: Stop Take the Bus 21 towards Mildmay Road or Bus 141 towards North Circular Rd/Green Lanes or Bus 76 towards Seven Sisters Station	start map end map area map	Buses every: 3 - 9 mins Max journey time: 16 mins Zone(s): 1
19:36	Eagle Wharf Road Walk to N1 5DL	start map end map	Av journey time: 6 mins
	end N1 5DL		

Maximum journey time: 00:40
Interchanges: 1

References

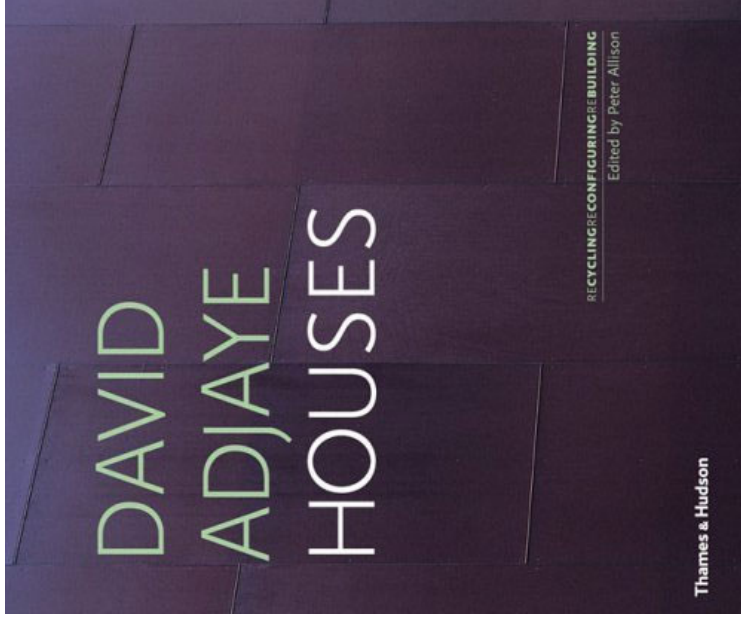
www.adjaye.com

<http://www.hongkongda.com/awards05/about.asp>

Google.earth

Allison, Peter Ed. David Adjaye Houses.
Thames & Hudson. New York, New York.
2006

www.tfl.gov.uk/tube/



All images taken from David Adjaye Houses
unless noted otherwise.