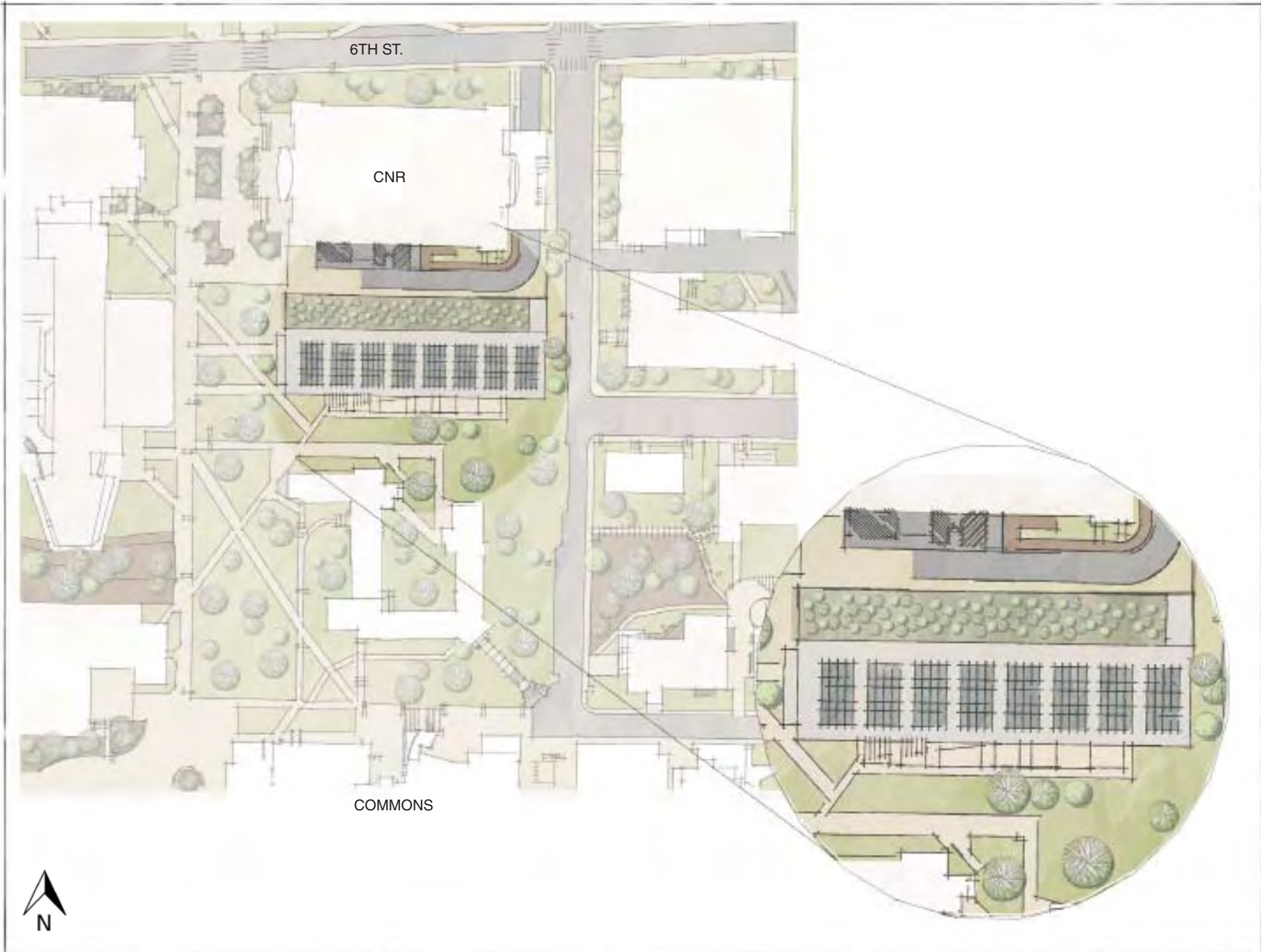




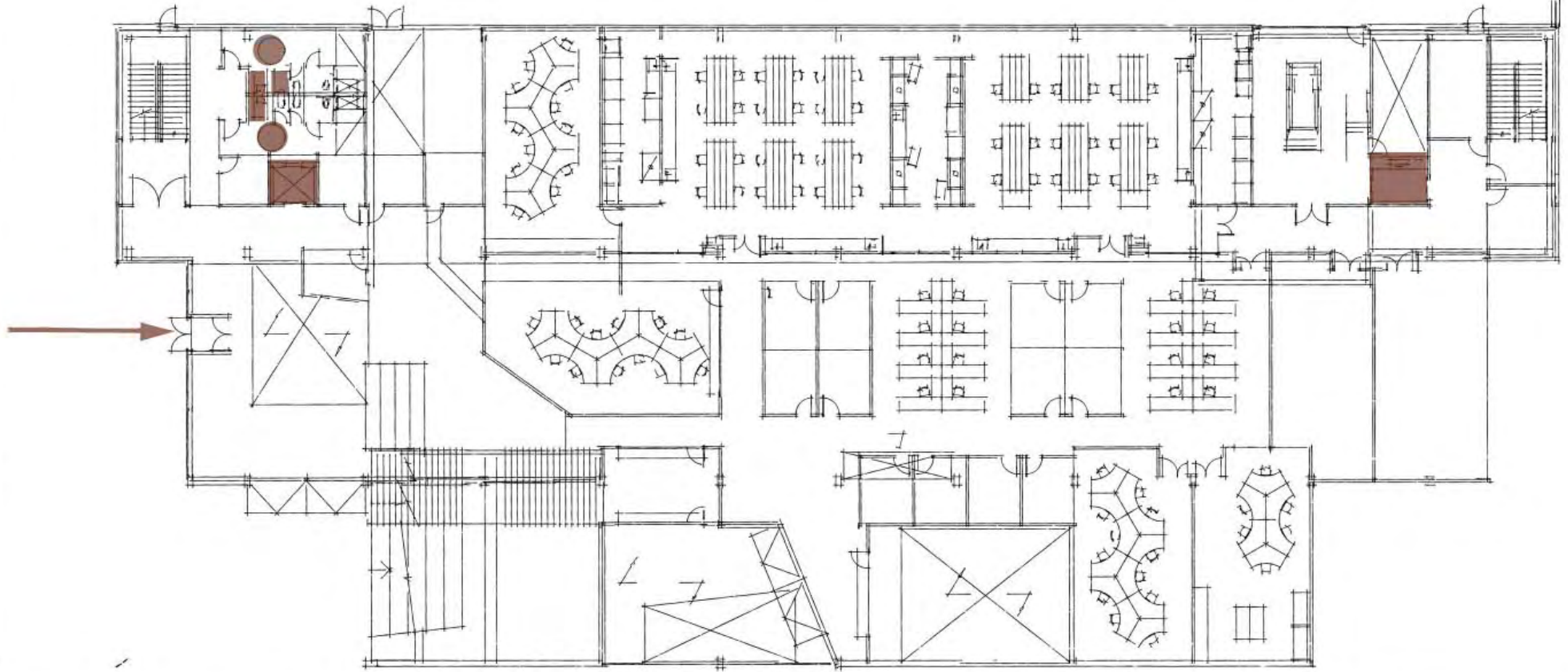
SOUTH EAST PERSPECTIVE

SITE PLAN



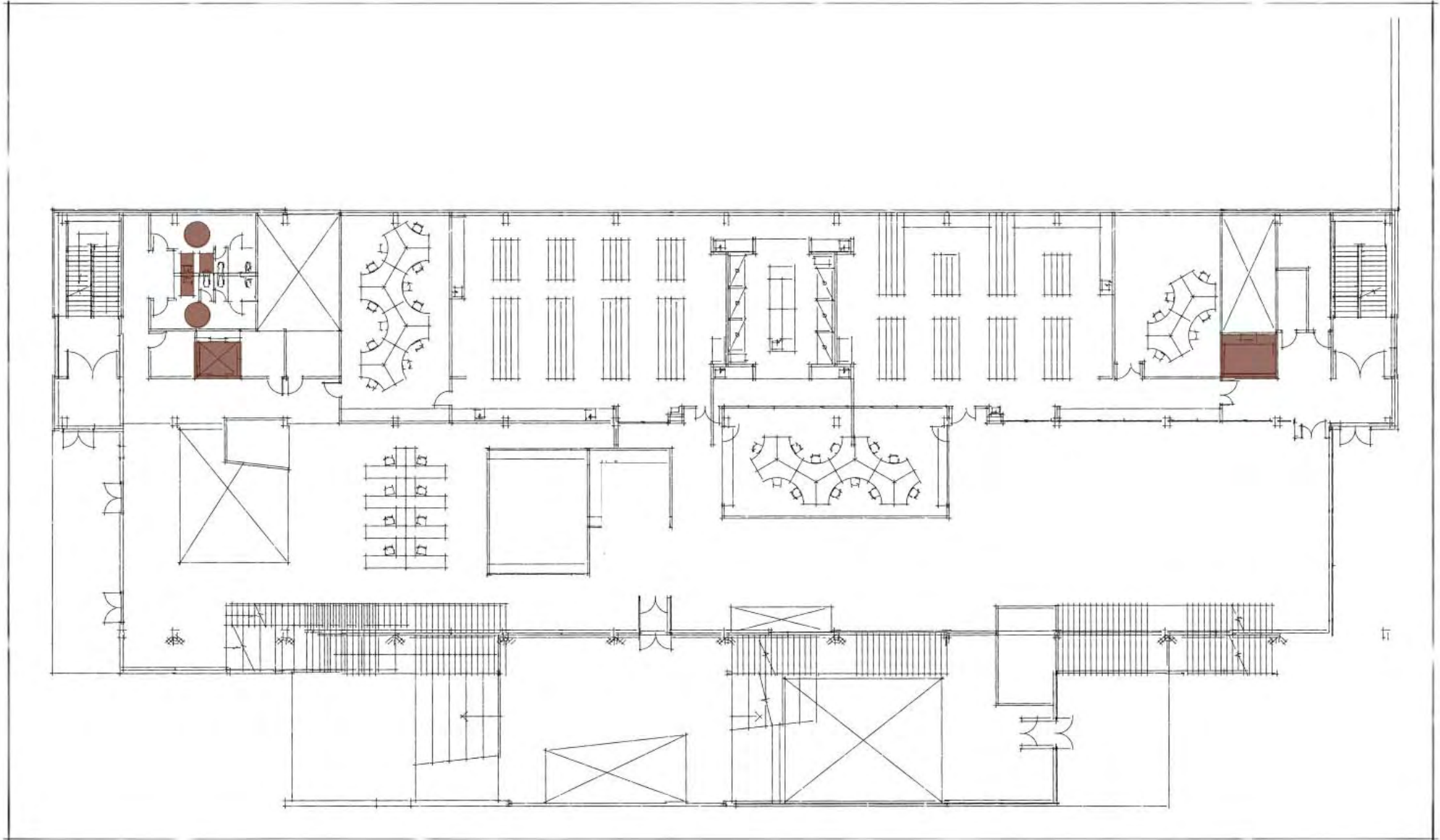
Integrated Research and Innovation Center

FIRST FLOOR PLAN & ACCESSIBILITY



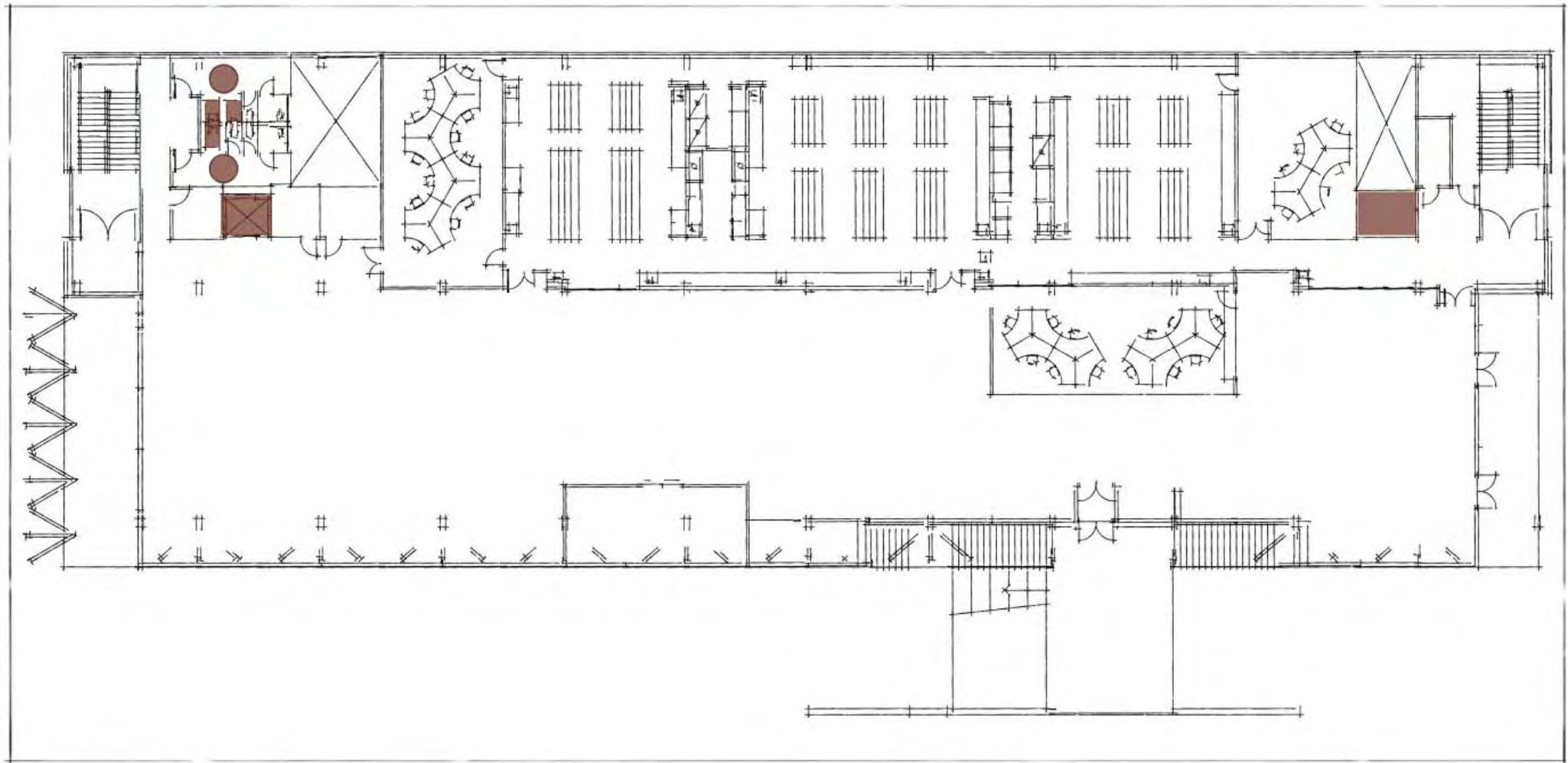
Integrated Research and Innovation Center

SECOND FLOOR PLAN & ACCESSIBILITY



Integrated Research and Innovation Center

THIRD FLOOR PLAN & ACCESSIBILITY



Integrated Research and Innovation Center



SOUTH ELEVATION



NORTH ELEVATION

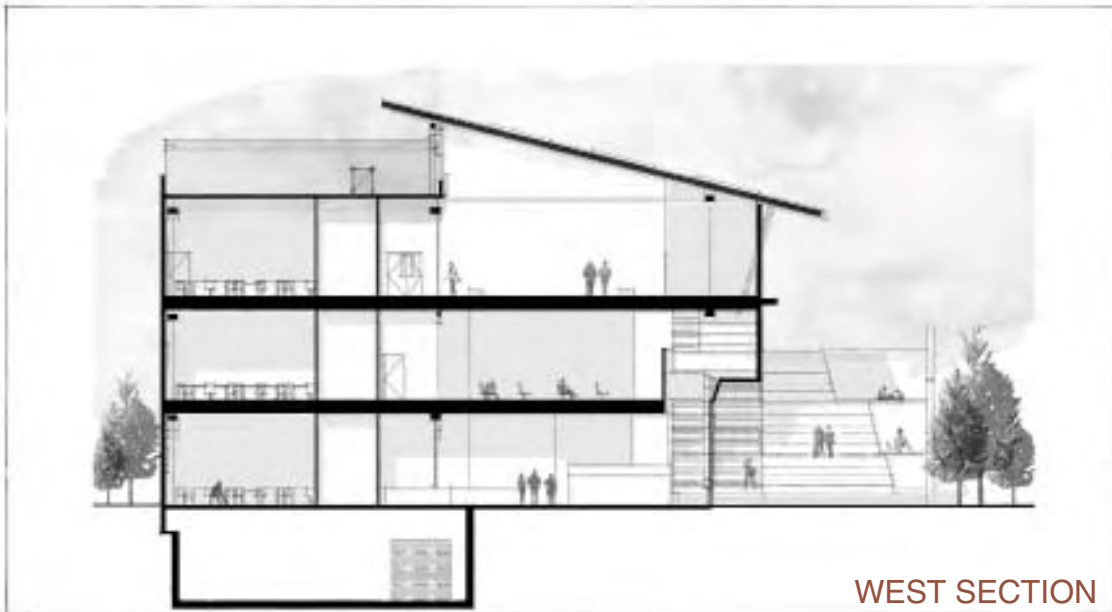


EAST ELEVATION

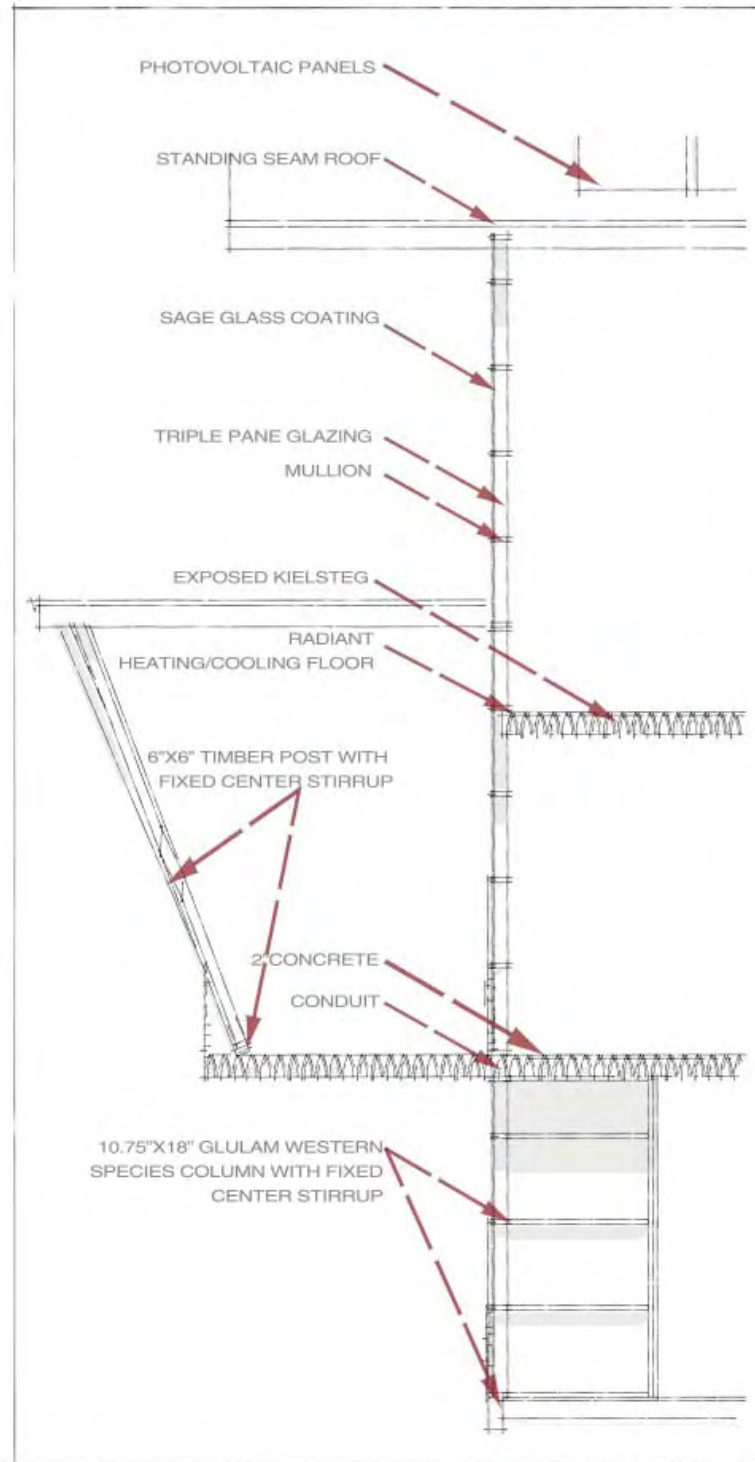


WEST ELEVATION

Integrated Research and Innovation Center



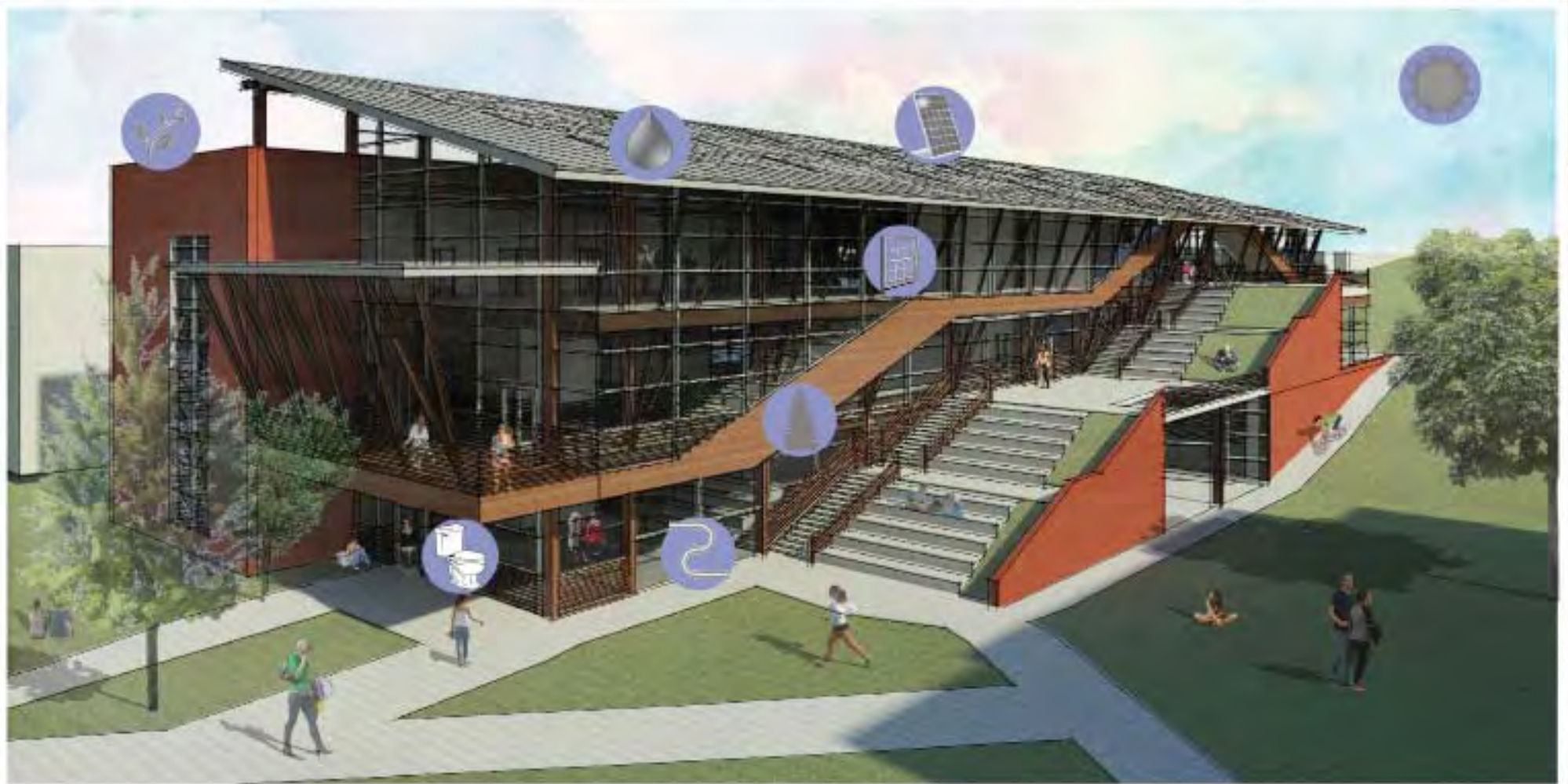
DETAIL SECTION



Integrated Research and Innovation Center

LAB PERSPECTIVE





1



RAINWATER
HARVESTING

1



LOW FLOW
FIXTURES

2



GREEN ROOF &
NATIVE LOW
WATER
LANDSCAPING

3



LOCALLY
HARVESTED
DOUGLAS FIR

4



SOLAR
ENERGY

5



PHOTOVOLTAIC
PANELS

6



TINTING SAGE
GLASS

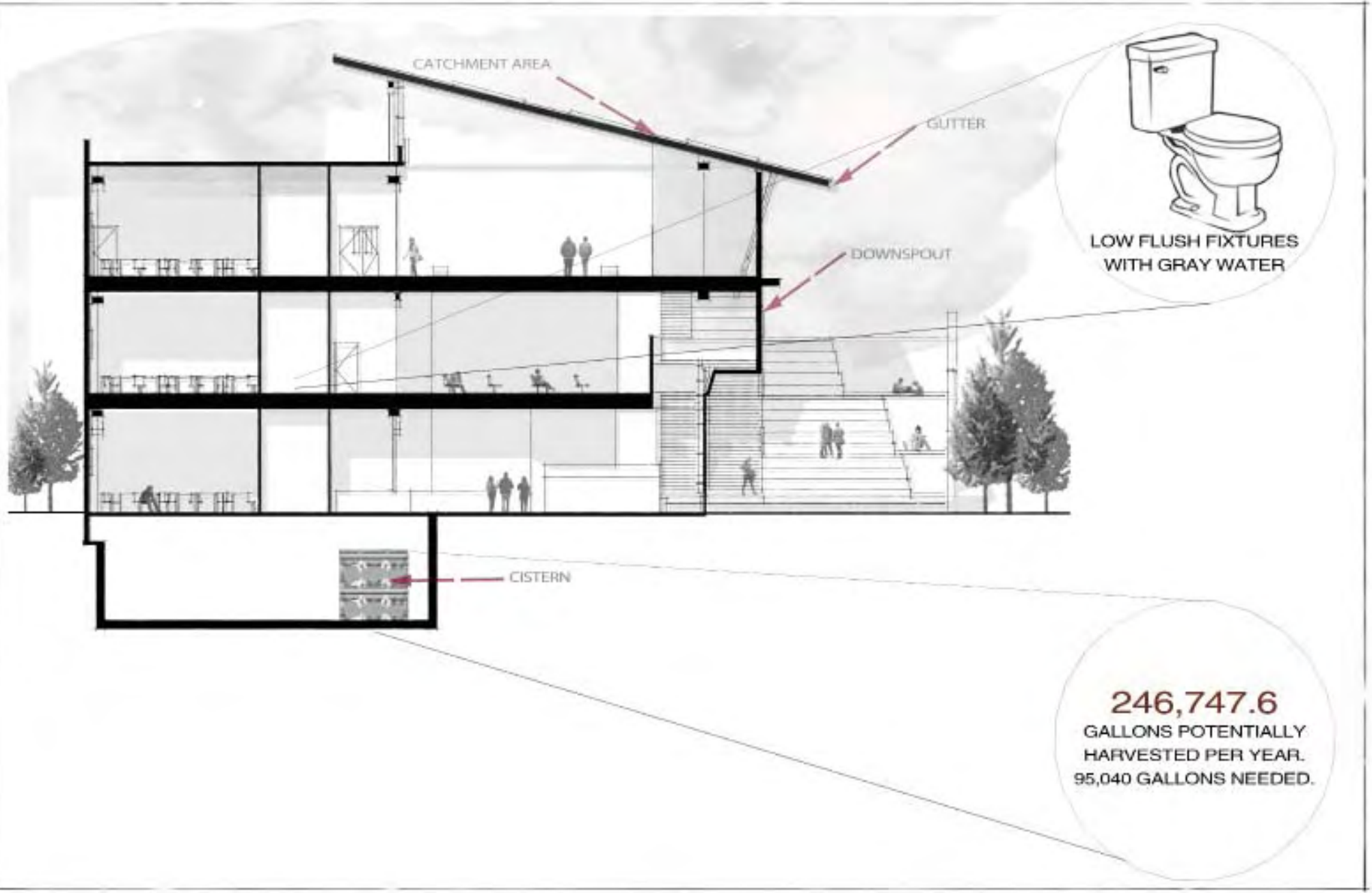
7



RADIANT FLOOR
HEATING/ COOLING

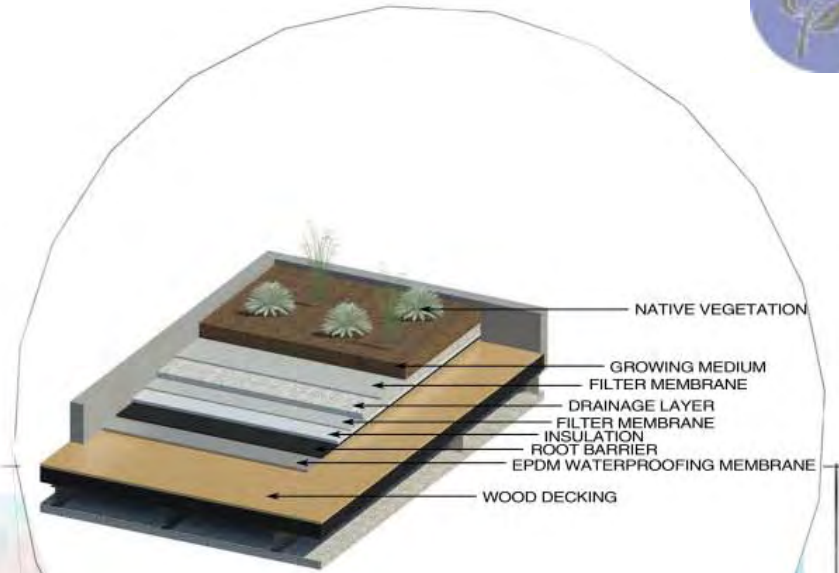
Integrated Research and Innovation Center

RAINWATER HARVESTING & LOW FLUSH FIXTURES



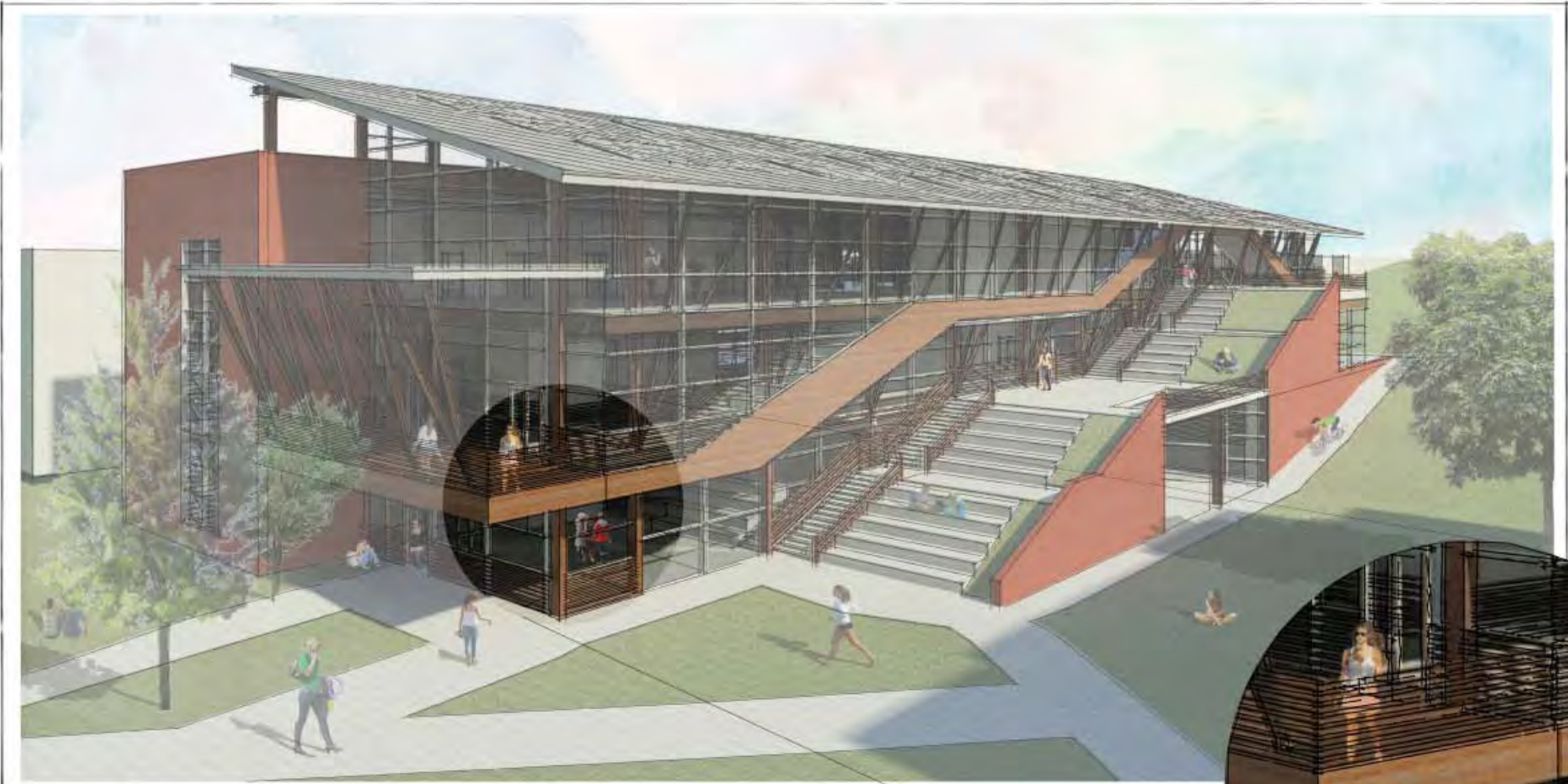
Integrated Research and Innovation Center

GREEN ROOF & NATIVE LOW WATER LANDSCAPING



Integrated Research and Innovation Center

LOCAL HARVESTED DOUGLAS FIR



Integrated Research and Innovation Center

LOCAL HARVESTED DOUGLAS FIR



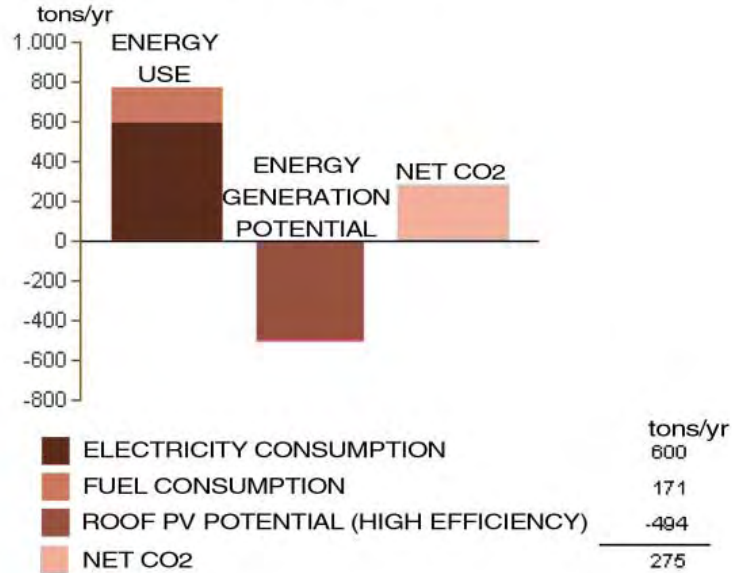
2" CONCRETE FLOOR

KIELSTEG

10.75 X 18 DOUGLAS FIR COLUMN

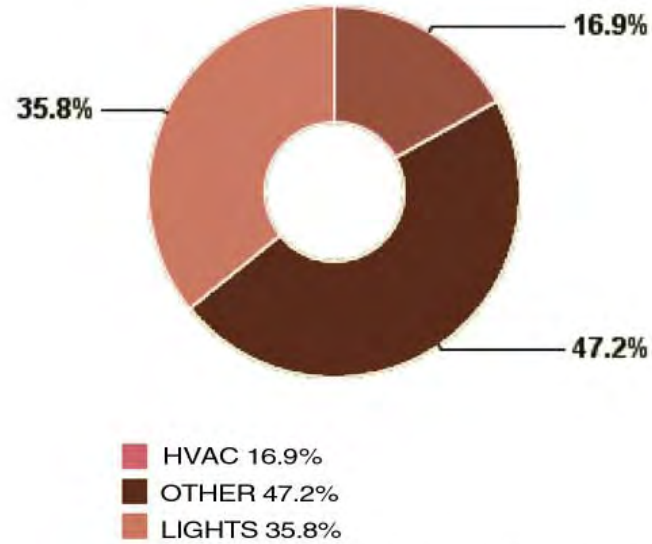


ANNUAL CARBON EMISSIONS



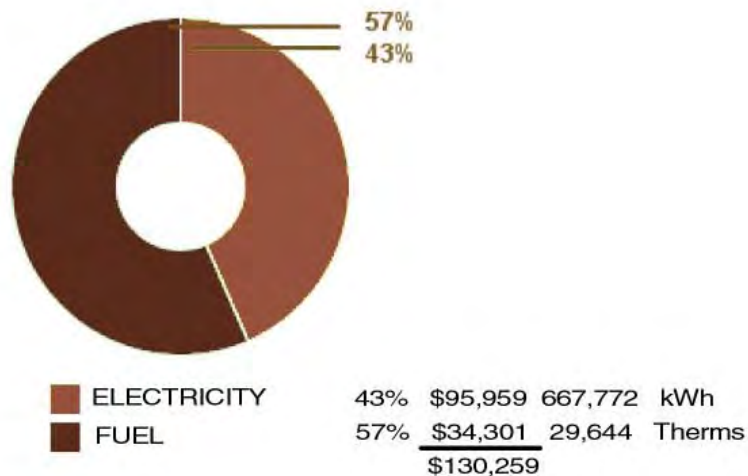
*NO FUEL COST- STEAM PLANT WILL PROVIDE

ANNUAL ELECTRIC END USE



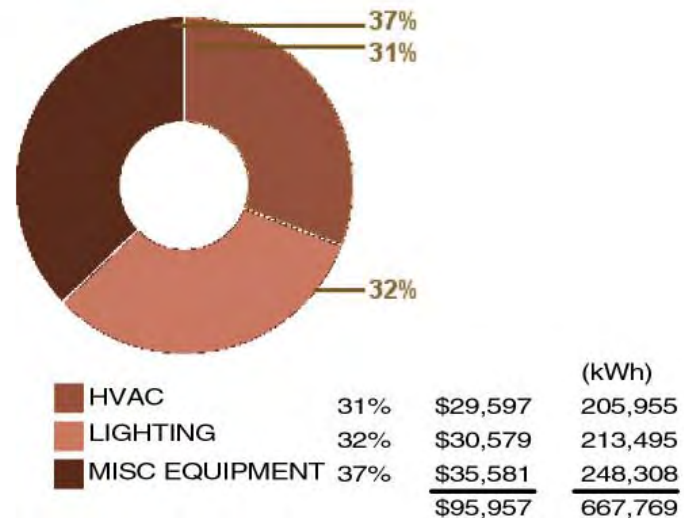
*DOES NOT INCLUDE SAGE GLASS, PHOTOVOLTAIC PANELS, OR RADIANT FLOOR

ANNUAL ENERGY USE/ COST



*DOES NOT INCLUDE SAGE GLASS OR PHOTOVOLTAIC PANELS
*NO FUEL COST- STEAM PLANT WILL PROVIDE

ENERGY USE: ELECTRICITY



*DOES NOT INCLUDE SAGE GLASS, PHOTOVOLTAIC PANELS, OR RADIANT FLOOR

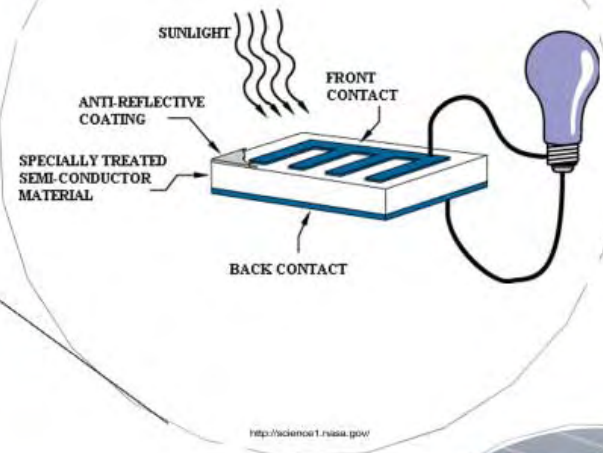
Integrated Research and Innovation Center

PHOTOVOLTAIC PANELS



**PROVIDES 50%
BUILDINGS ELECTRICITY**

USES: 666,686 kWh PER YEAR
1269.87 SOLAR PANELS NEEDED
635 SOLAR PANELS





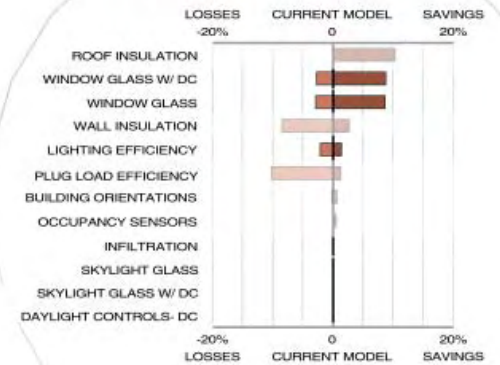
THERMAL EFFICIENCY

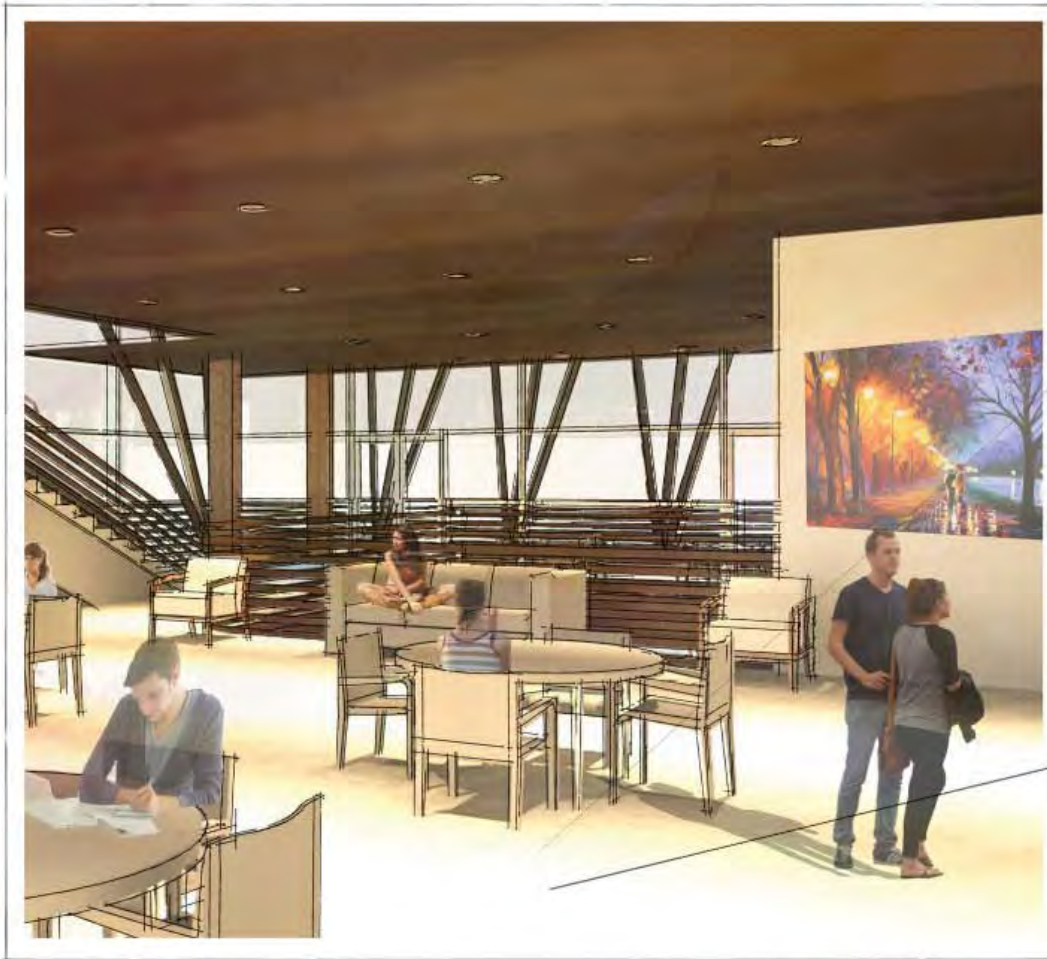
20% SAVINGS IN OPERATING COSTS
25% DECREASE IN SIZE OF HVAC SYSTEMS



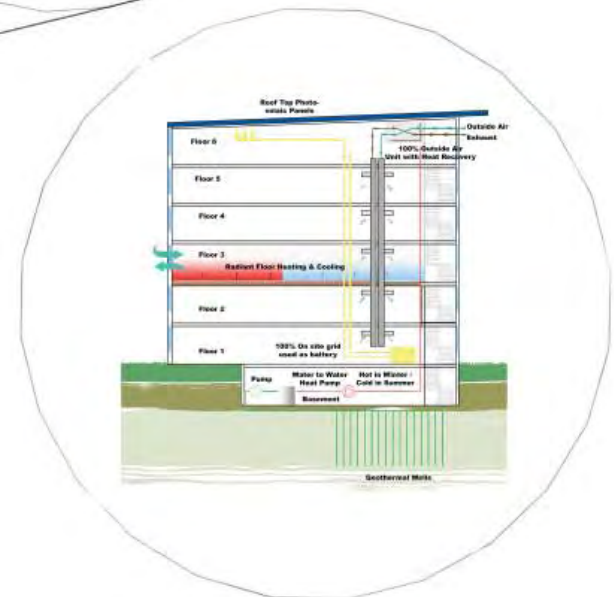
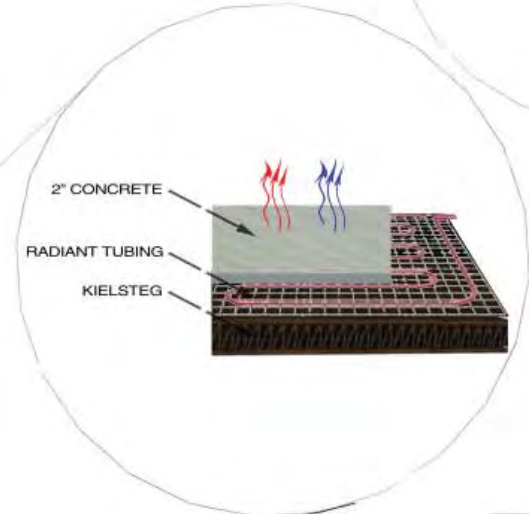
OPERABLE TINTED GLAZING THAT EMBRACES SUNLIGHT WHEN IT'S COOL OUT AND BLOCKING IT WHEN IT IS HOT.

0% INFILTRATION





ELIMINATES HVAC EXCEPT VENTILATION
HEATING IN THE WINTER AND COOLING IN THE SUMMER WITH ENERGY FROM THE PHOTOVOLTAIC PANELS.



Integrated Research and Innovation Center

COMMON AREA PERSPECTIVE

