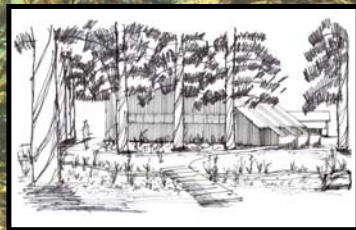
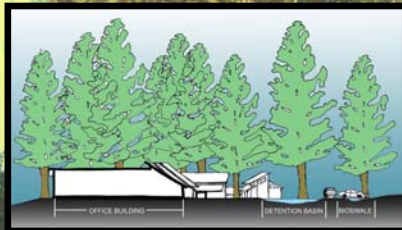
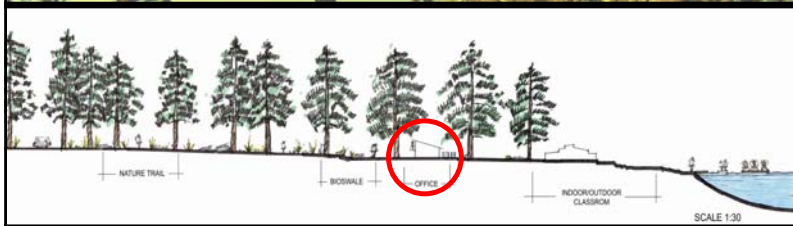
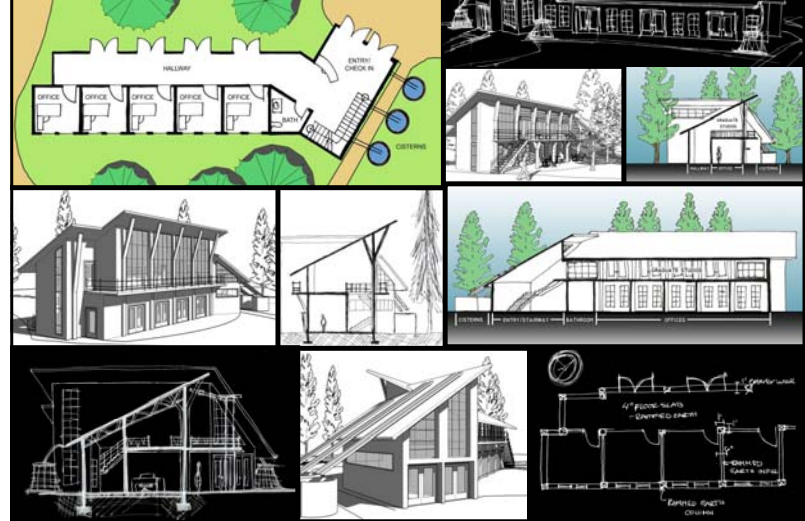


Site Section: Building Location



Drawings by Ben Robbe, Landscape Architect

Process: Preliminary Design

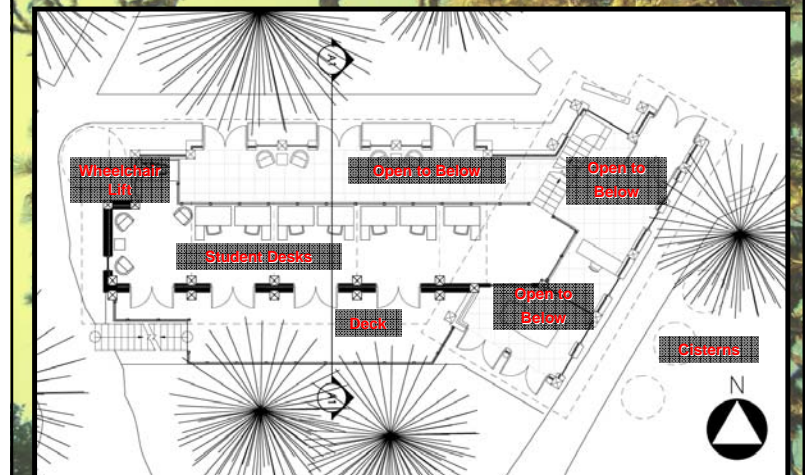


First Floor Plan



Square Footage: 1,550

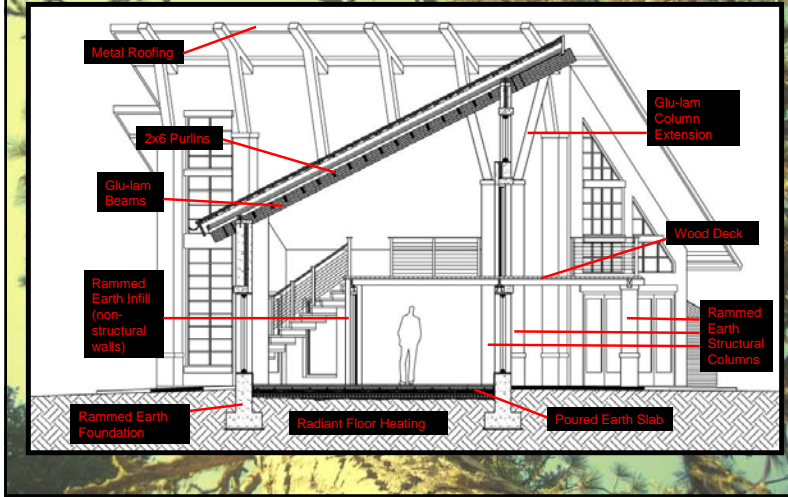
Mezzanine Floor Plan



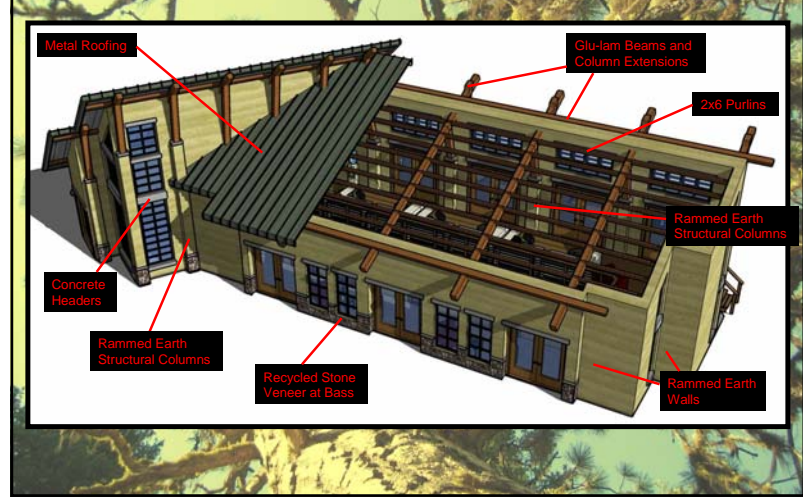
Square Footage: 720

Total Square Footage: 2,270

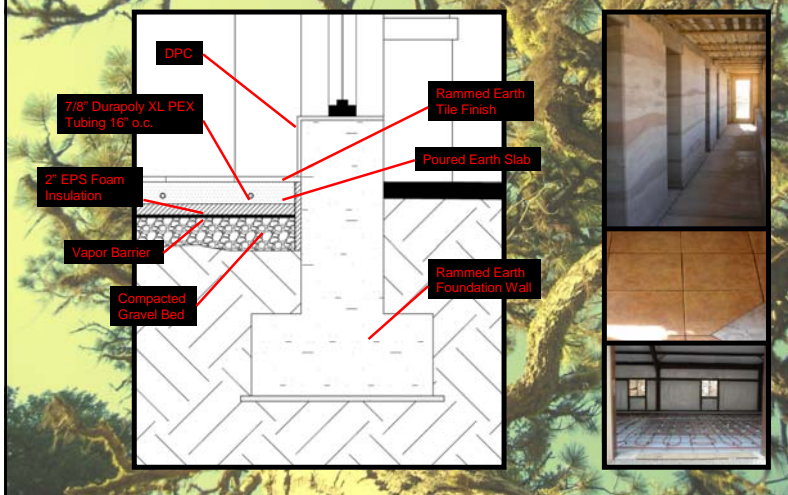
Building Cross Section



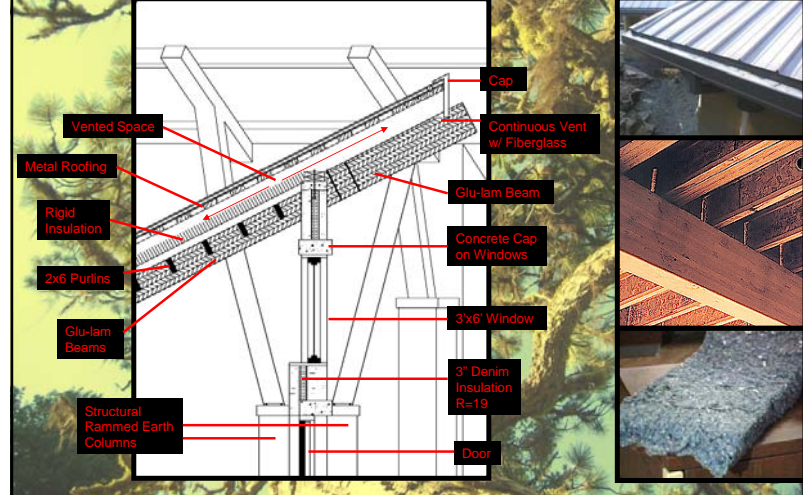
Structural Diagram



Structural Detail: Radiant Floor-to-Foundation Wall

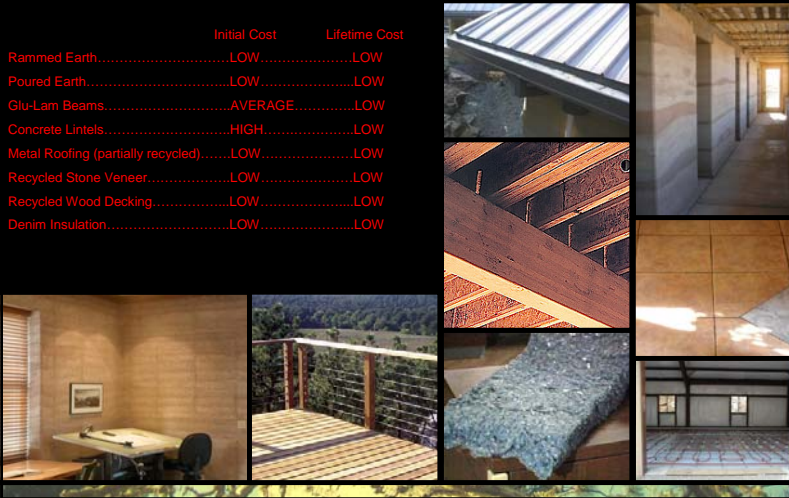


Structural Detail: Wall-to-Roof

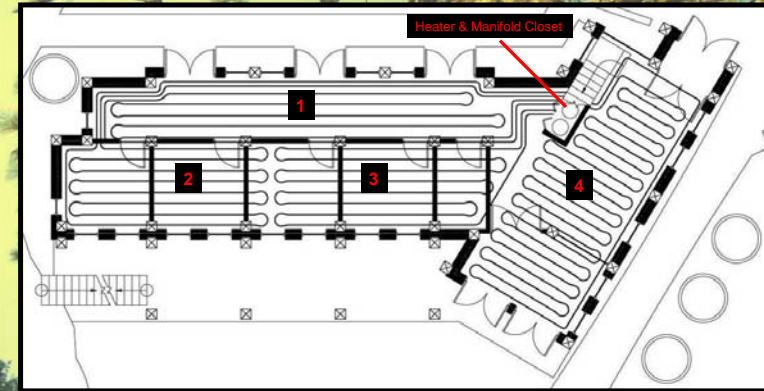


Primary Building Materials: Carbon Emissions

	Initial Cost	Lifetime Cost
Rammed Earth.....	LOW.....	LOW
Poured Earth.....	LOW.....	LOW
Glu-Lam Beams.....	AVERAGE.....	LOW
Concrete Lintels.....	HIGH.....	LOW
Metal Roofing (partially recycled).....	LOW.....	LOW
Recycled Stone Veneer.....	LOW.....	LOW
Recycled Wood Decking.....	LOW.....	LOW
Denim Insulation.....	LOW.....	LOW

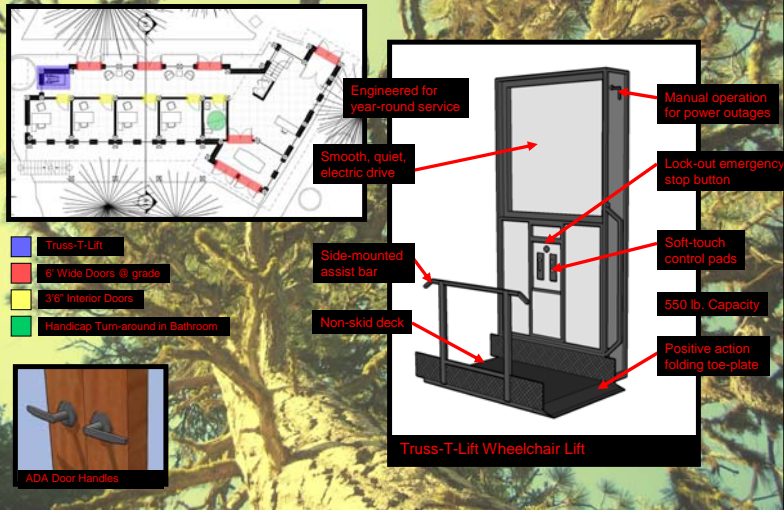


Structural Detail: Radiant Floor System

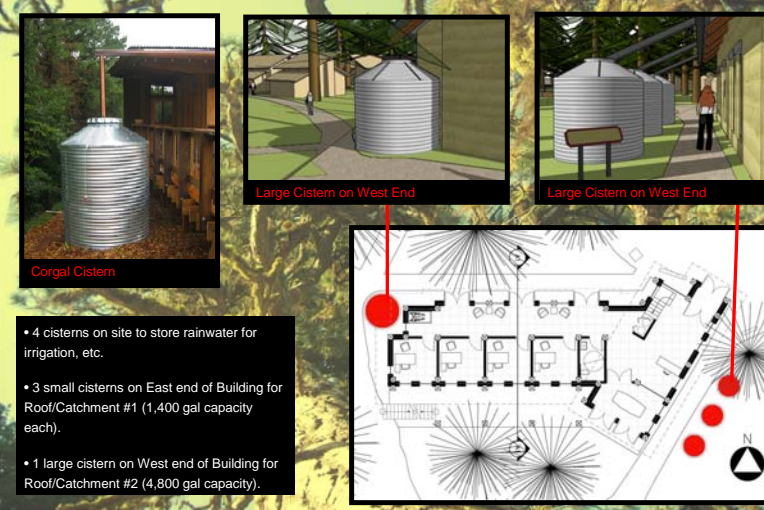


Radiant Floor Layout: Each Section less than 300 linear feet

ADA Compliance



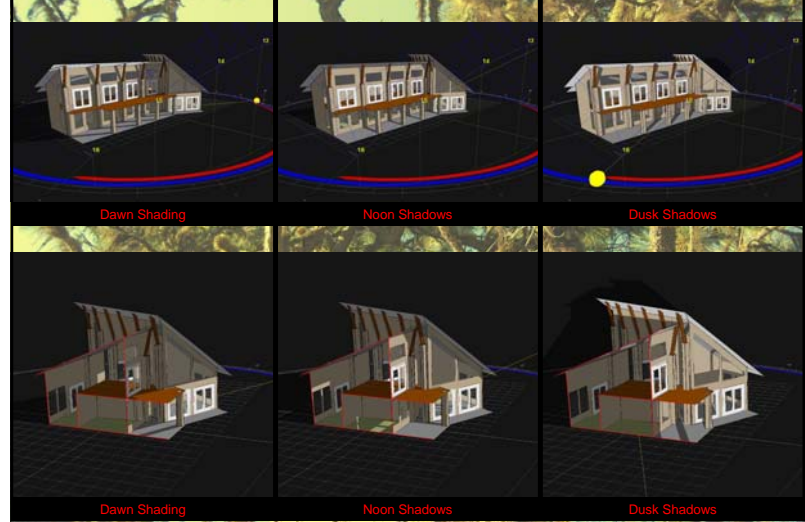
Water Management



Entry Perspectives



Ecotect Model: Daylighting Study



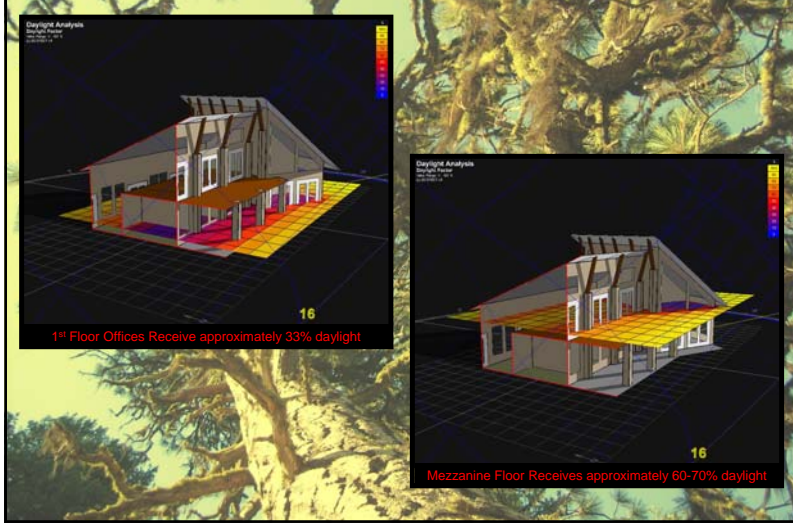
South Perspectives



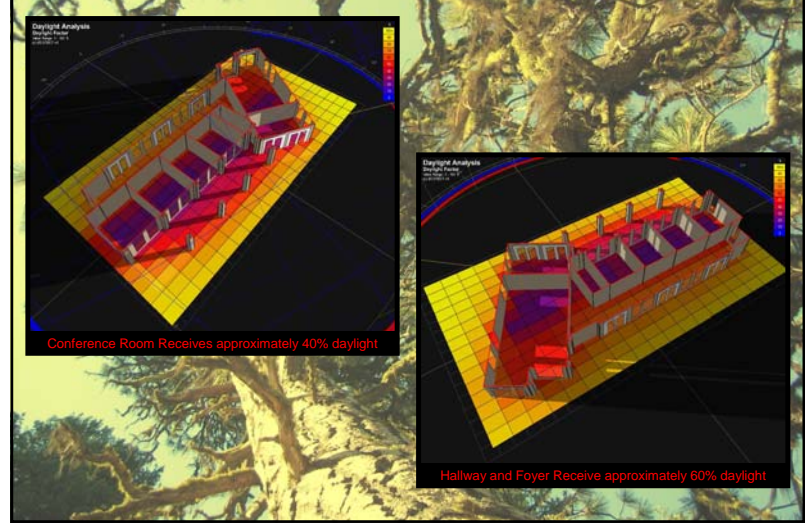
Interior Perspective



Ecotect Model: Daylighting Study



Ecotect Model: Daylighting Study



Thank You

