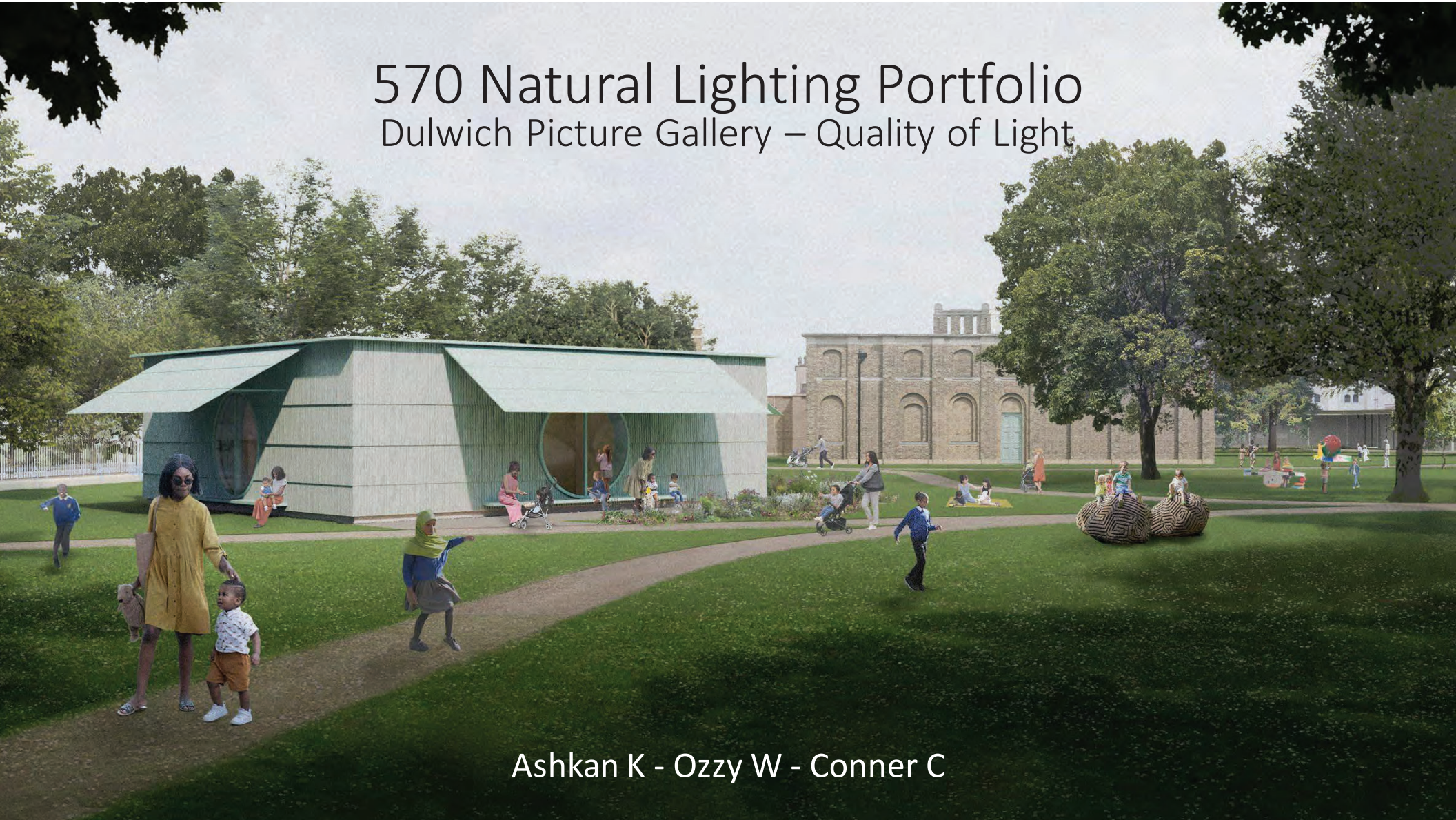


570 Natural Lighting Portfolio

Dulwich Picture Gallery – Quality of Light



Ashkan K - Ozzy W - Conner C

Site History

- - Designed and built initially from 1811 – 1815 by Sir John Soane, at the request of art collector and friend Francis Bourgeois, to serve as the future home of his collection on the campus of the 17th century Dulwich College. Along with other friends Margaret and Noel Desenfans, Bourgeois is interred in a mausoleum on the site
- - Expanded, renovated, and repaired many times over the years. The Children's Addition will be the first expansion since 2000, and includes a 3-acre landscape renovation for showcasing art outdoors. Construction is expected to finish by early 2025



Sir John Soane

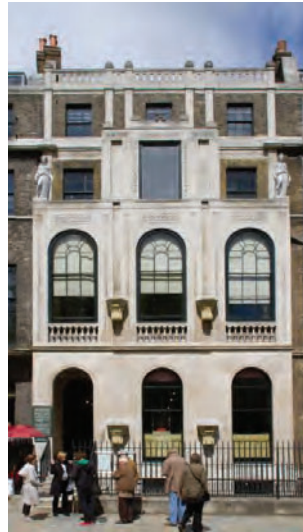
- Born in 1753, Soane practiced architecture for ~50 years between 1780 and 1830, before his death in 1837

- Renowned for work on the Bank of England (now mostly lost after demolition and redesign in 1913), his own museum, and the Dulwich Picture Gallery

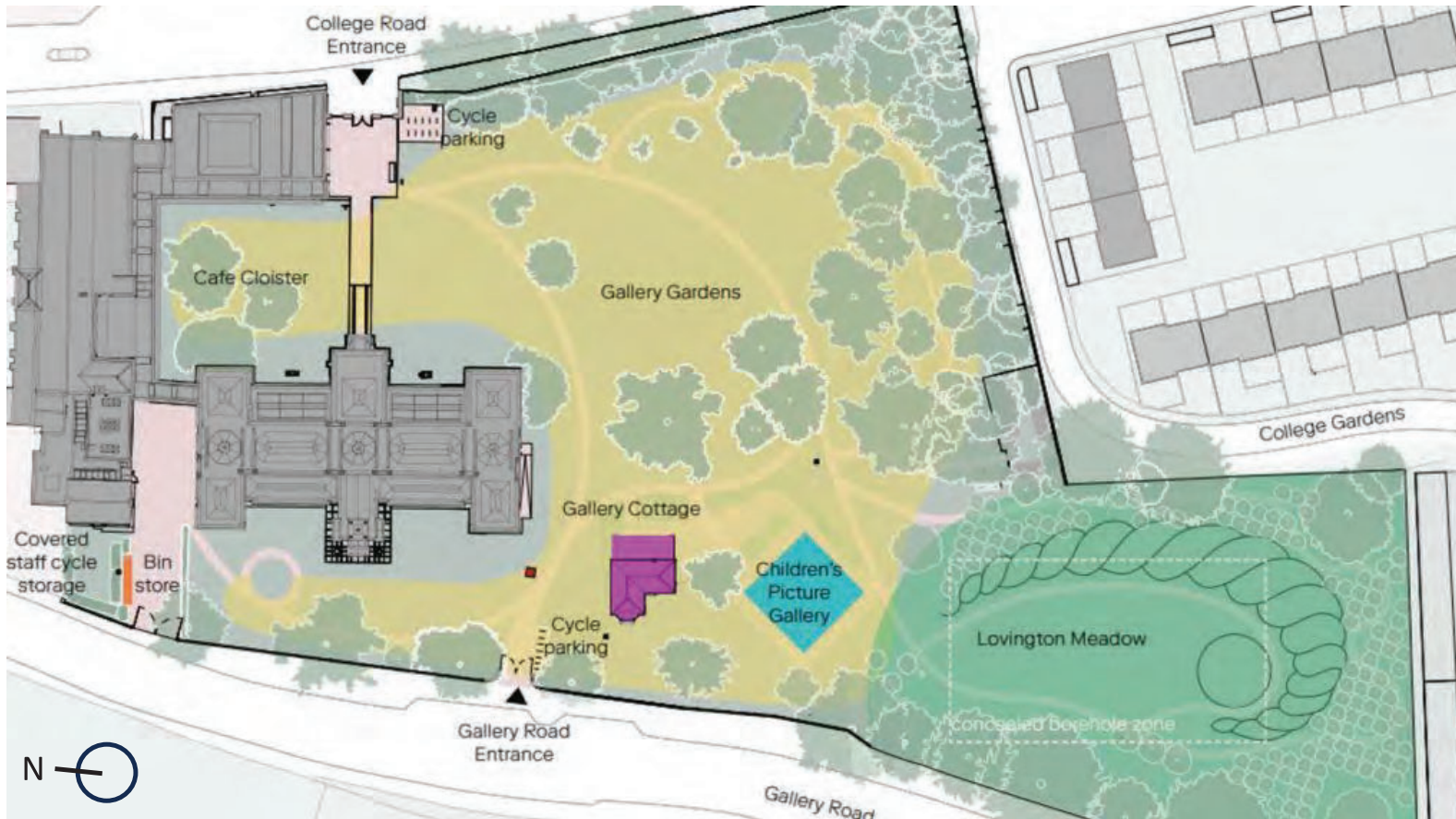
- Renowned for work on the Bank of England (now mostly lost after demolition and redesign in 1913) (below), his own museum (right), and the Dulwich Picture Gallery



Image Credit to Wikipedia



Built Surroundings



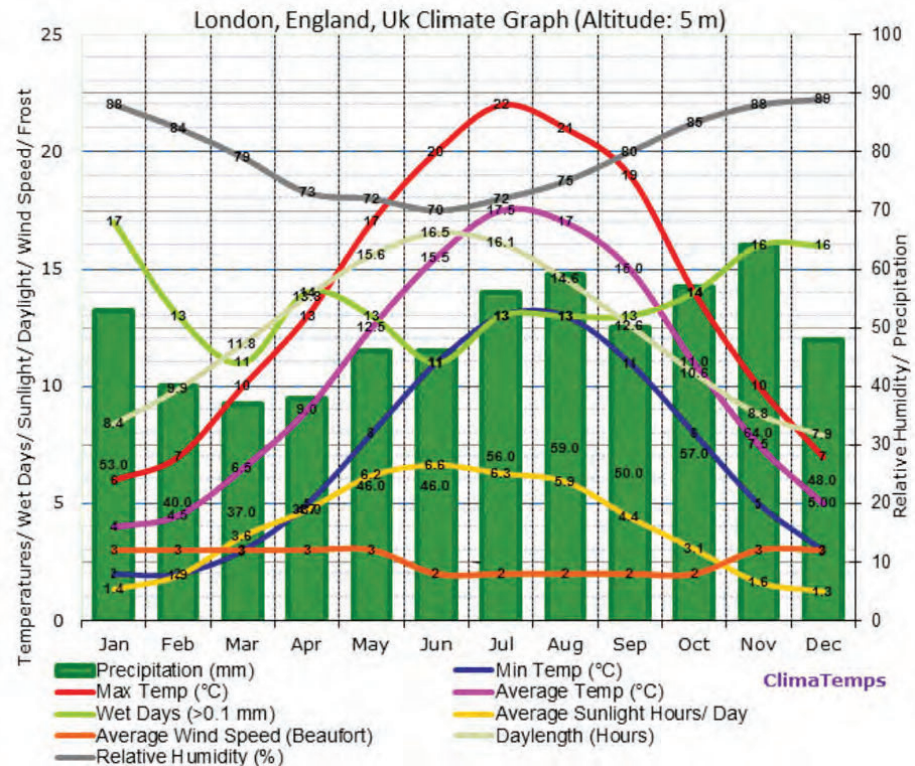
- The Addition is sited within the larger grounds of Dulwich. Its location is far from most other buildings, instead accessed by walking paths.

- Transit opportunities include roadside vehicle parking on-site, cycling and foot access, and a transit station ~ ¼ mile south.

General Climate Breakdown of LONDON










London has a temperate maritime climate, which means it experiences mild summers and cool winters with relatively high humidity throughout the year.

- Summer (June to August):** Summers in London are generally mild and relatively warm, with average high temperatures ranging from 18°C to 25°C (64°F to 77°F). However, heatwaves occasionally occur, causing temperatures to rise above 30°C (86°F). Summer is the driest season, but occasional rain showers are still possible.
- Fall (September to November):** Fall sees a gradual drop in temperatures. September is relatively warm, but as the season progresses, temperatures start to cool down. Rainfall increases during this time, and foggy conditions are not uncommon, especially in the early mornings.



- **Winter (December to February):** Winters in London are generally cold and damp. Average high temperatures range from 8°C to 12°C (46°F to 54°F), and frost is common, especially during the nights. Snowfall is rare but can occur. London experiences its highest rainfall during the winter months.
- **Spring (March to May):** Spring is a transitional season when temperatures start to rise, and the city becomes greener as plants and flowers bloom. Average high temperatures range from 12°C to 18°C (54°F to 64°F). Spring is also a relatively wet season, but it is not as rainy as winter.

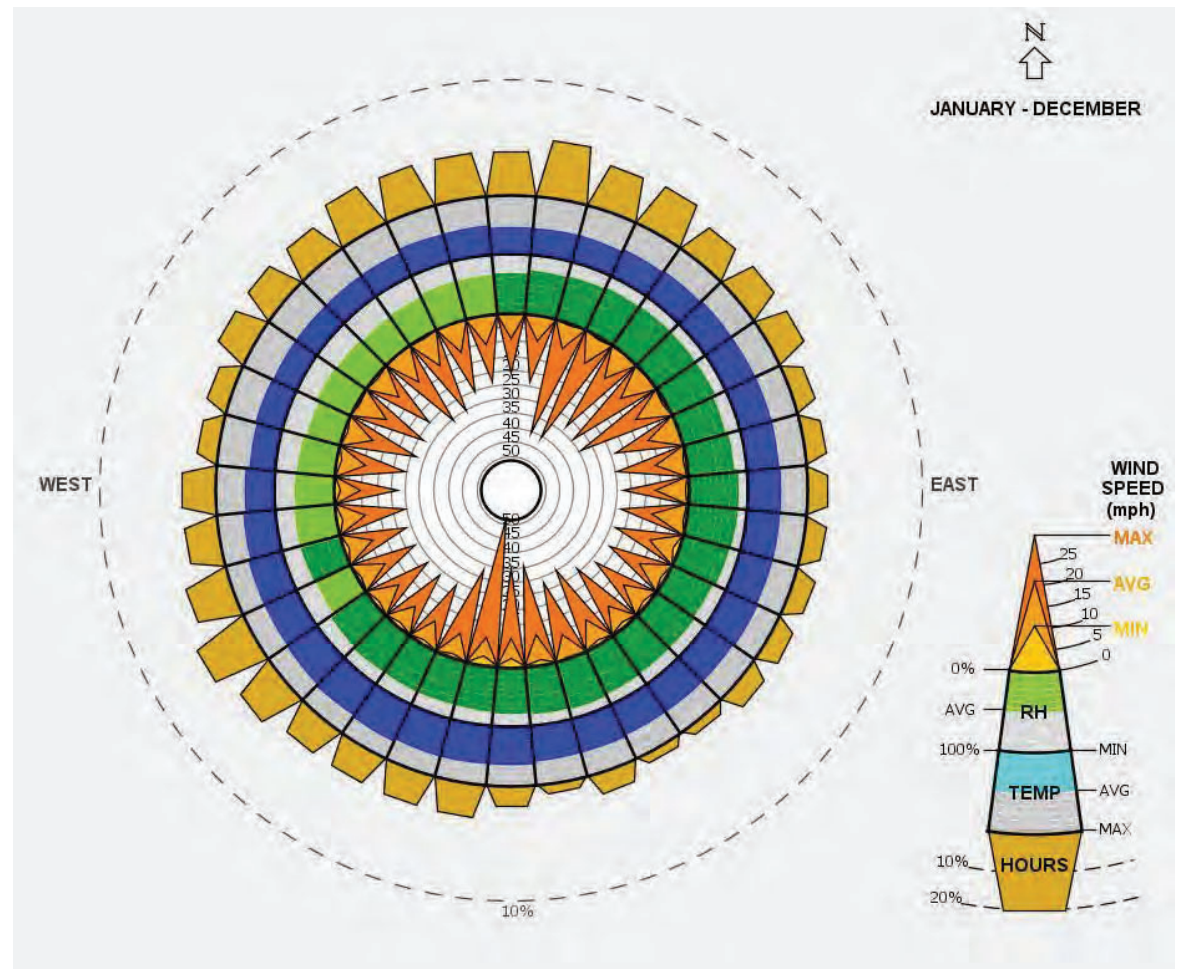
London, England Climate Table

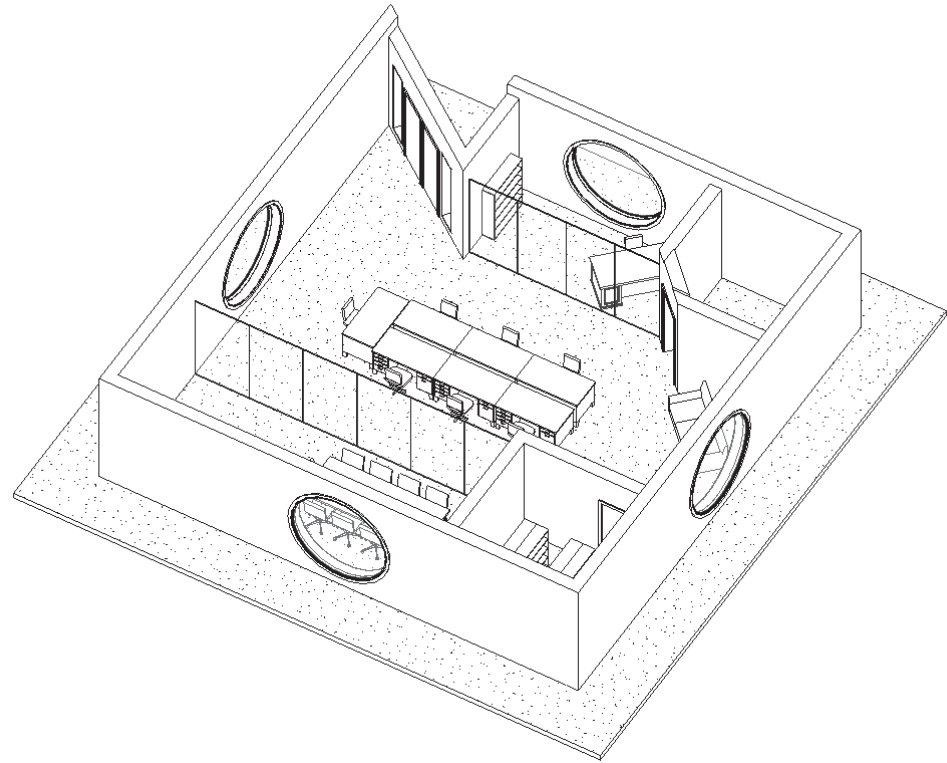
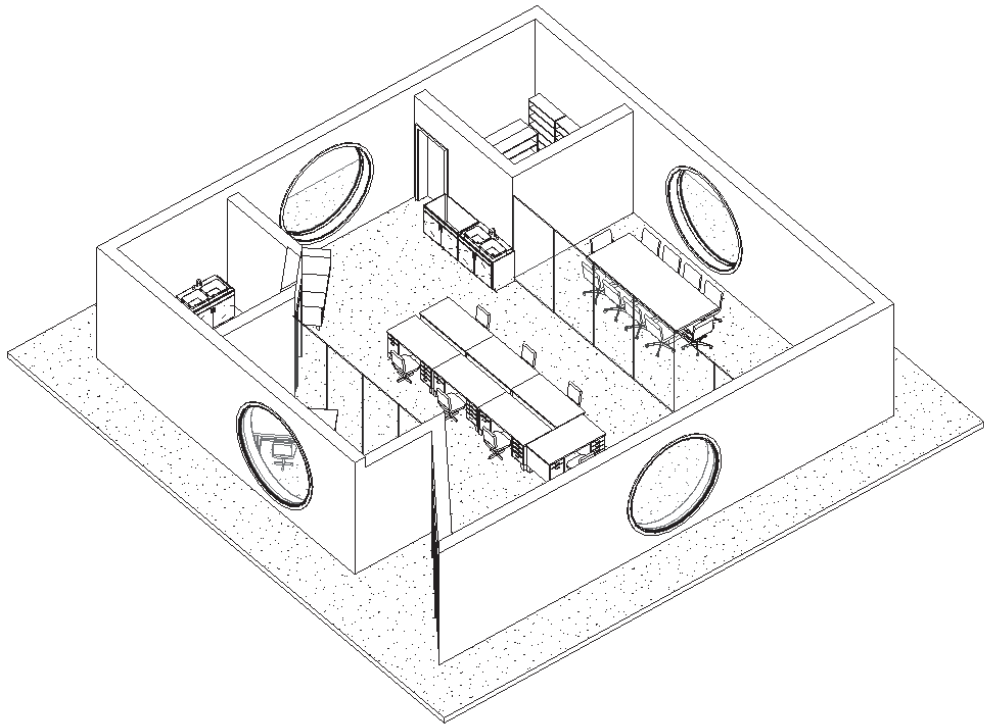
Climate Variable	Jan	Feb	Mar	Apr	May	Jun	Jul	Aug	Sep	Oct	Nov	Dec	Annual
 Average Max Temperature °C (°F)	6 (43)	7 (45)	10 (50)	13 (55)	17 (63)	20 (68)	22 (72)	21 (70)	19 (66)	14 (57)	10 (50)	7 (45)	14 (57)
 Average Temperature °C (°F)	4 (39)	5 (40)	7 (44)	9 (48)	13 (55)	16 (60)	18 (64)	17 (63)	15 (59)	11 (52)	8 (46)	5 (41)	10 (51)
 Average Min Temperature °C (°F)	2 (36)	2 (36)	3 (37)	5 (41)	8 (46)	11 (52)	13 (55)	13 (55)	11 (52)	8 (46)	5 (41)	3 (37)	7 (45)
 Average Precipitation mm (in)	53 (2)	40 (2)	37 (1)	38 (1)	46 (2)	46 (2)	56 (2)	59 (2)	50 (2)	57 (2)	64 (3)	48 (2)	594 (23)
 Number of Wet Days (probability of rain on a day %)	17 (55)	13 (46)	11 (35)	14 (47)	13 (42)	11 (37)	13 (42)	13 (42)	13 (43)	14 (45)	16 (53)	16 (52)	164 (45)
 Average Sunlight Hours/ Day	1h 21'	2h 07'	3h 36'	4h 54'	6h 11'	6h 52'	6h 17'	5h 56'	4h 34'	3h 03'	1h 42'	1h 15'	3h 59'
 Average Daylight Hours/ Day	8h 24'	9h 53'	11h 48'	13h 49'	15h 35'	16h 31'	16h 06'	14h 33'	12h 35'	10h 33'	8h 48'	7h 54'	12h 00'
 Percentage of Sunny (Cloudy) Daylight Hours	17 (83)	22 (78)	31 (69)	36 (64)	40 (60)	42 (58)	40 (60)	41 (59)	37 (63)	30 (70)	20 (80)	16 (84)	33 (67)
 Sun altitude at solar noon on the 21st day (°)	18.7	28	38.8	50.5	58.8	62	58.9	50.6	39.2	27.7	18.6	15.2	38.9

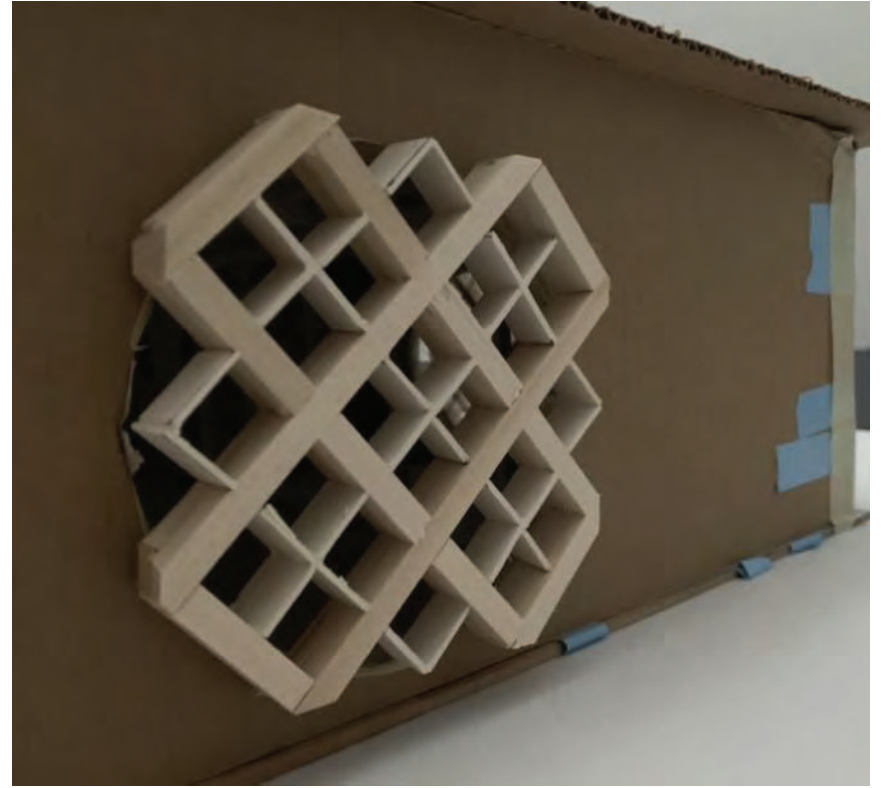
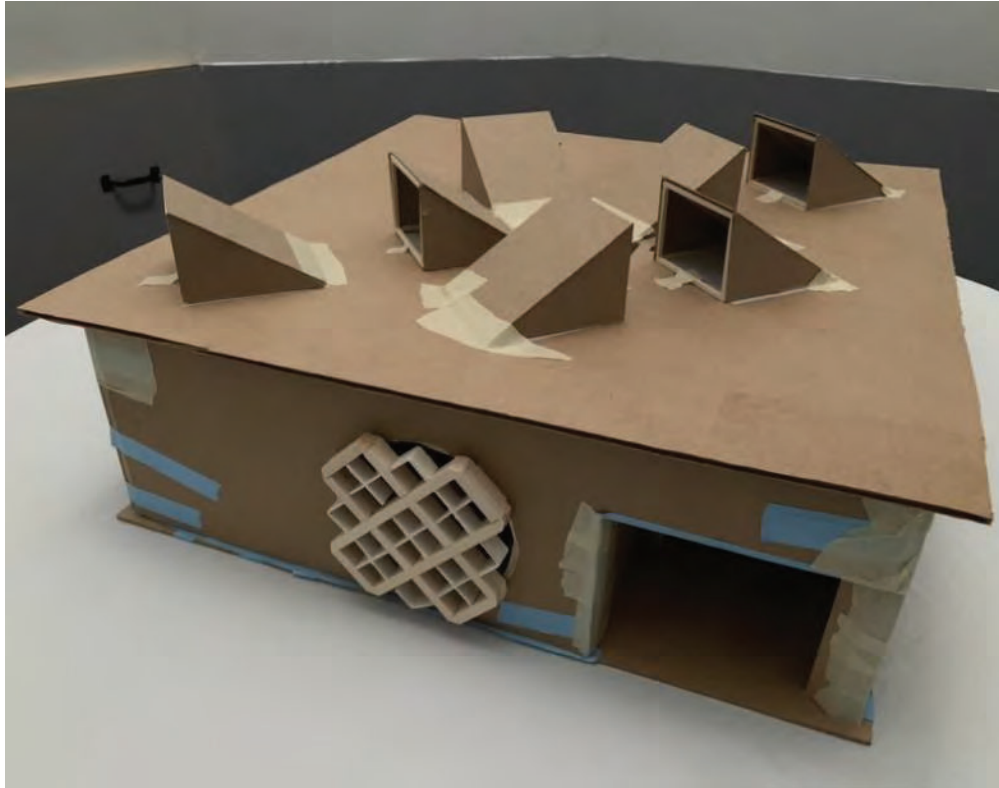
Wind Analysis

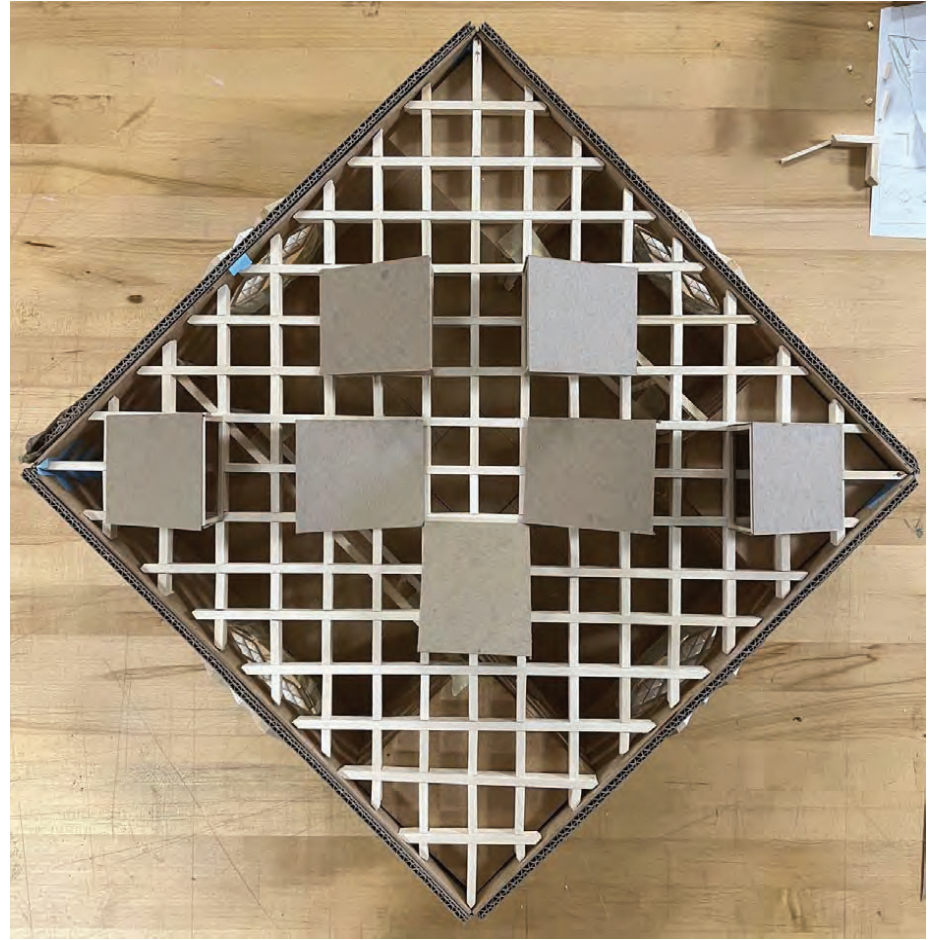
Winds are relatively stable throughout the year in terms of time and magnitude, but generally, they tend to be strongest from the south and the northeast. Additionally, they tend to blow less from the south and east than the north and west, although only slightly.

The winds throughout the year are relatively temperate.











- Sunny day with shading devices in place, greater daylighting and less direct sunlight

Cloudy day with better daylighting and no electric lights





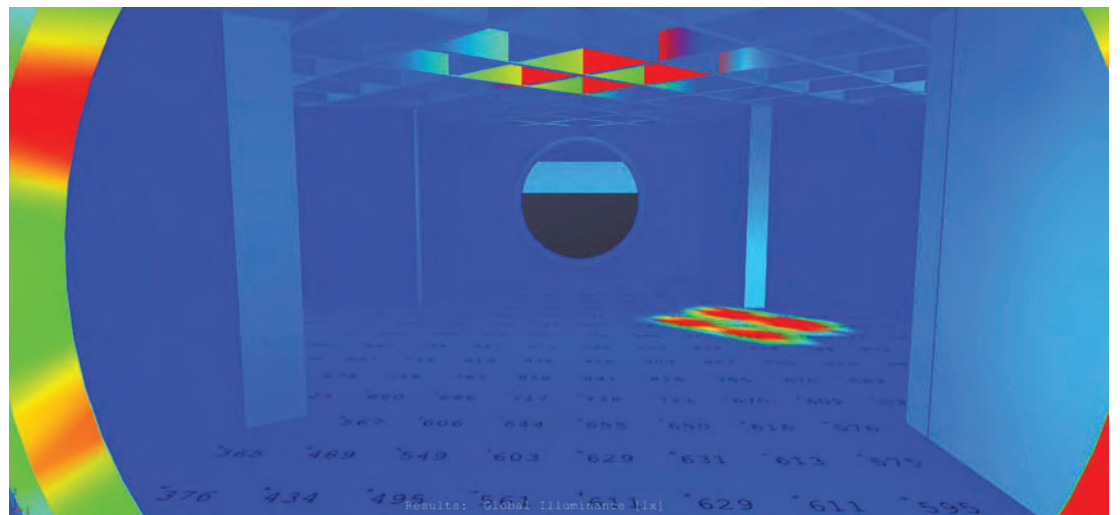
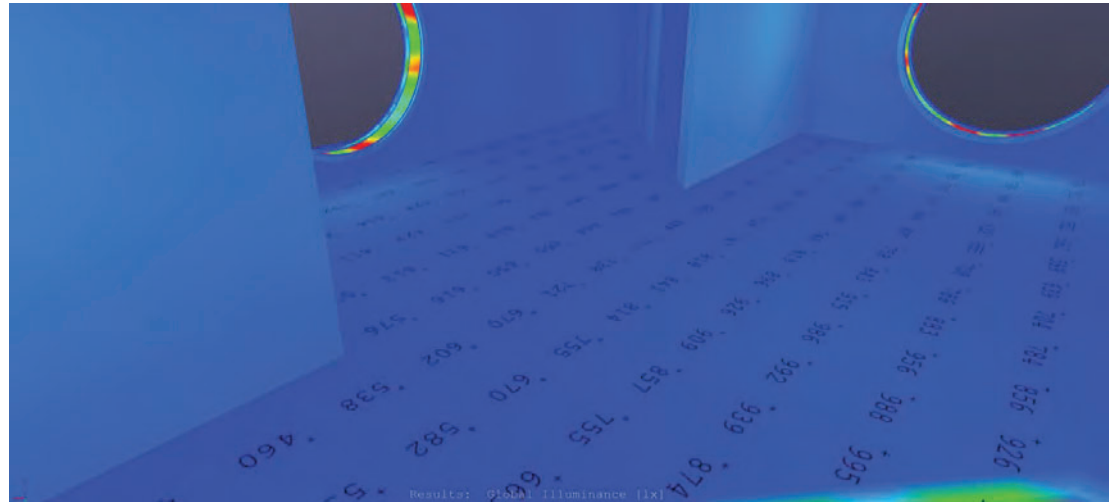
Light off



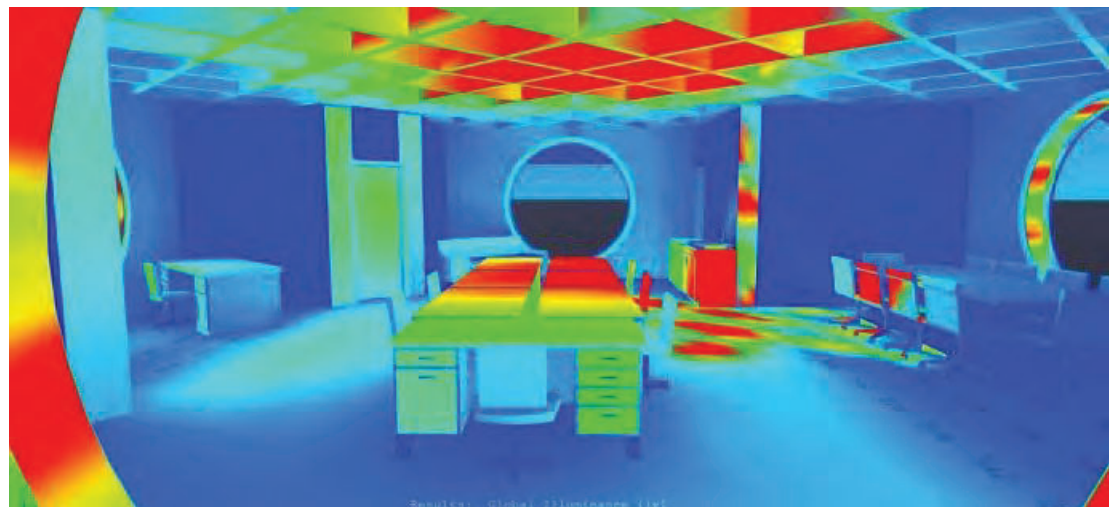
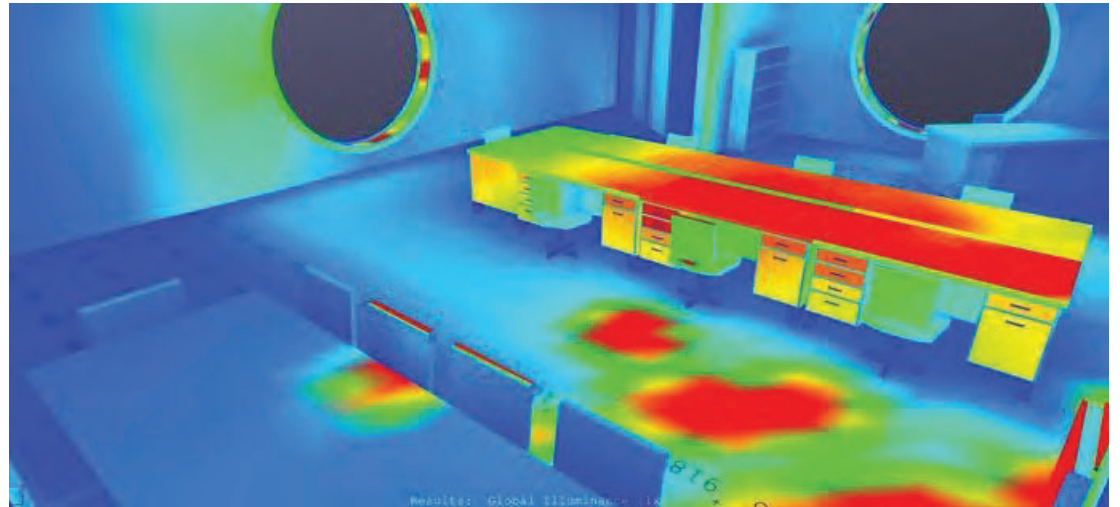
Light on

Comparison of north entrance view at dusk on a cloudy day with electric light from exterior through rooftop devices

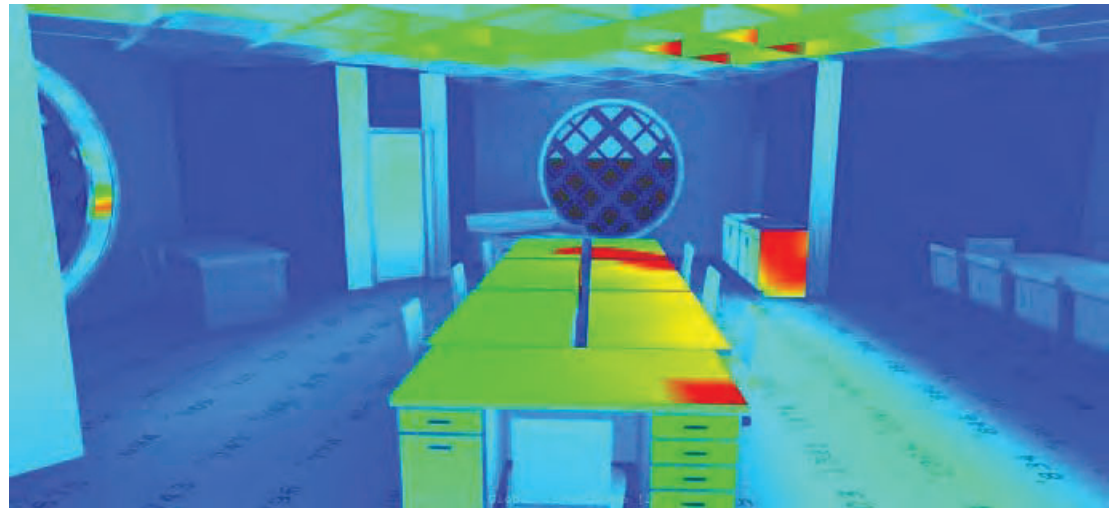
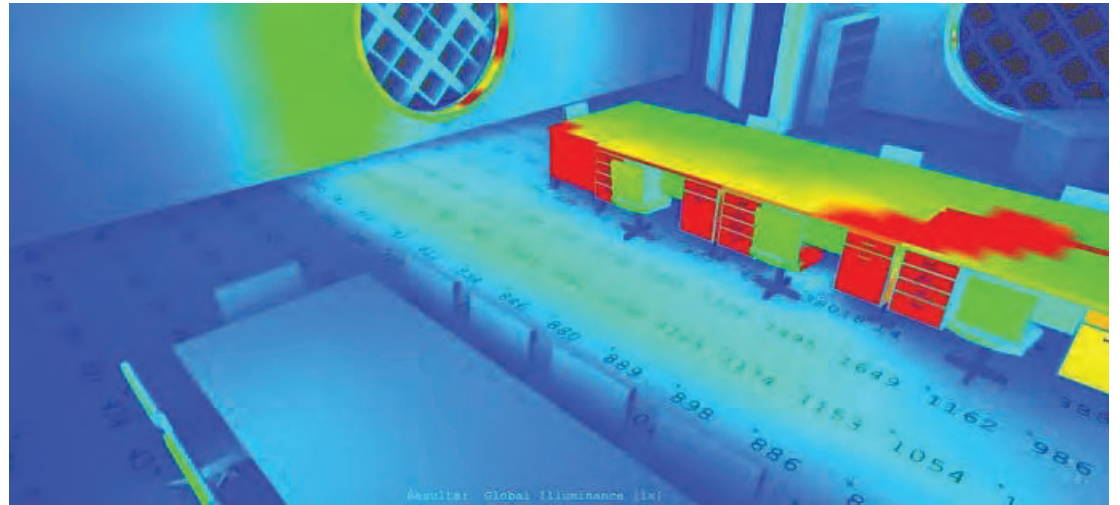
Gallery as Planned



Dulwich
Office Post-
Renovation:
No Shading
Devices



Dulwich Office Post- Renovation: Shading Devices





JAPANESE FOOTBRIDGE

1899: Claude Monet

Summer Season - 2023



6:45 AM- Sunrise



10 AM Midday – Cloudy Day



9 AM Morning – Sunny Day



Midday - Cloudy



Midday - Sunny



6:50 PM-Sunset

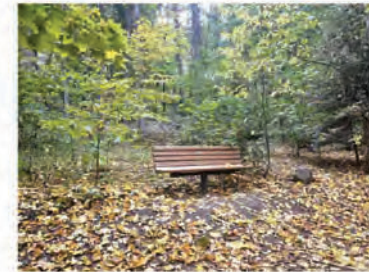
Early Fall Season - 2023



07:05 AM- Sunrise



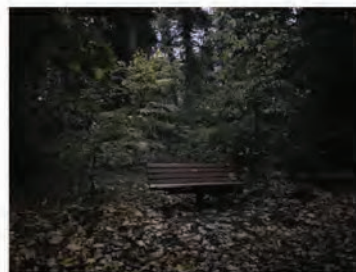
10:00 AM – Cloudy Day



Midday - Cloudy



03:35 PM – Cloudy day



06:10 PM - Sunset

Late Fall Season - 2023



07:05 AM- Sunrise



10:00 AM – Snowy Day



Midday - Snowy Day



03:35 PM – Sunny day



06:10 PM - Sunset



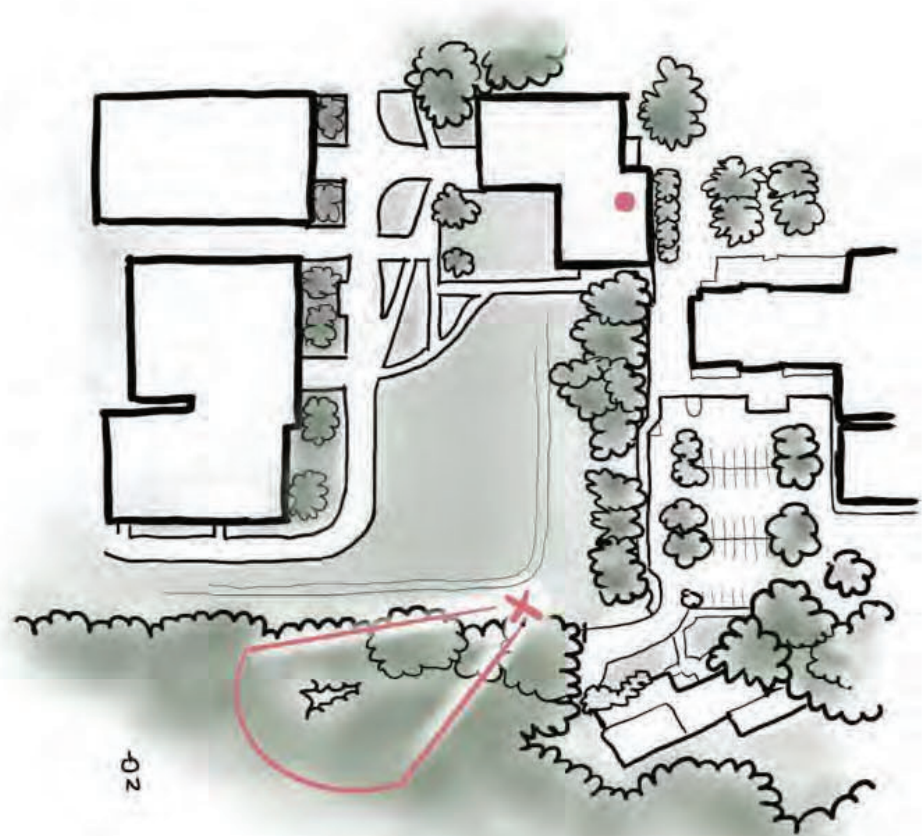
THE QUALITY OF LIGHT

ARCH 570: ASSIGNMENT 1

OZZY WEXLER

SITE LOCATION

- SHATTUCK ARBORETUM (UIDAHO)





9.07.23
8:03 AM
SUNNY



9.04.23
12:46 PM
MOSTLY CLOUDY



9.05.23
12:53 PM
SUNNY

Late Summer

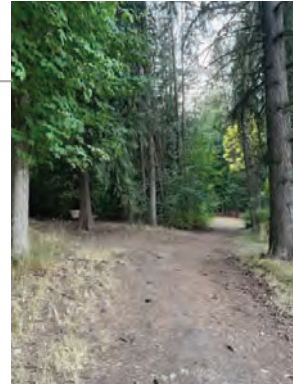
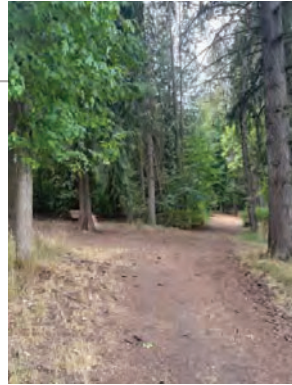
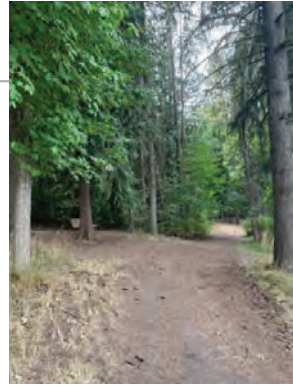
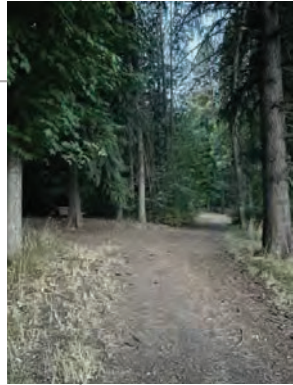


9.11.23
6:40 PM
MOSTLY CLOUDY

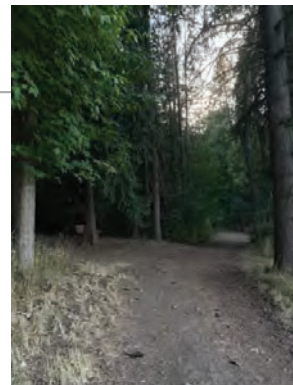


9.07.23
6:42 PM
SUNNY

time



cloudy



sunny

the quality of light



10.04.23
8:12 AM
SUNNY



10.17.23
9:02 AM
MOSTLY SUNNY



10.07.23
12:12 PM
SUNNY

Early Fall

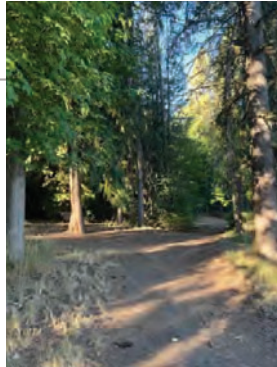


10.16.23
12:32 PM
CLOUDY



10.16.23
4:19 PM
CLOUDY

time



late summer



early fall

the quality of light



10.18.23
10:17 AM
SUNNY



10.21.23
11:16 AM
SUNNY



11.09.23
10:17 AM
MOSTLY SUNNY

Late Fall



10.26.23
12:57 PM
CLOUDY

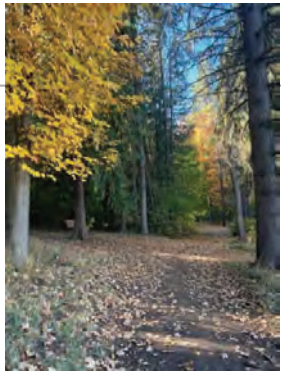


10.27.23
4:55 PM
MOSTLY CLOUDY

time

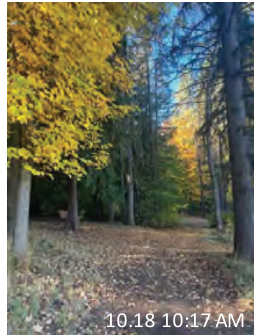


early fall

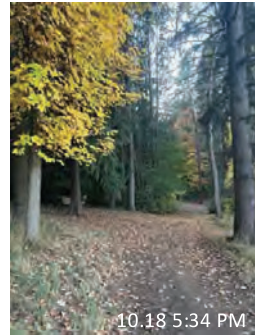


late fall

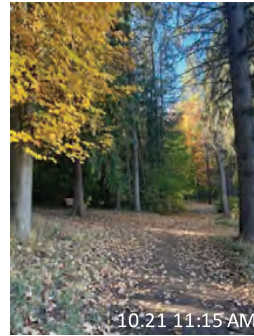
the quality of light



10.18 10:17 AM



10.18 5:34 PM



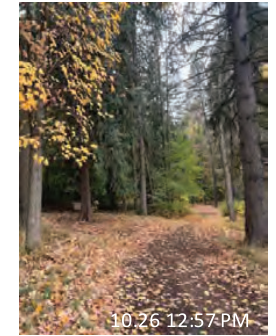
10.21 11:15 AM



10.23 8:20 AM



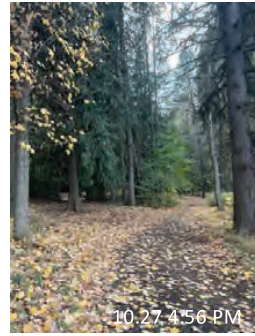
10.24 10:38 AM



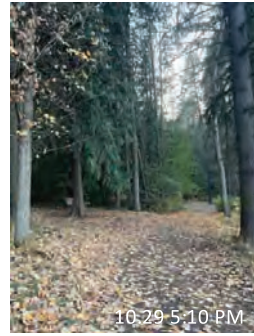
10.26 12:57 PM



10.27 10:47 AM



10.27 4:56 PM



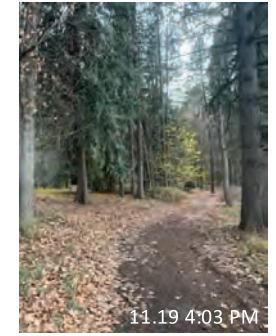
10.29 5:10 PM



10.30 1:36 PM



11.09 10:31 AM



11.19 4:03 PM

10.27 10:47 AM





Auto Repair at The Hive
Located in Moscow,
ID - Your Friendly ...

Pets Are People Too

Animal Clinic & Hospital

SITE

Berman
Creekside Park

Bearable Dentistry PLLC

Lauder Ave

Styner Ave

Hill Rental Properties

A&W Restaurant

Republic on Main

Pizza Hut

Henley St

Taylor Ave

Troy Rd

Hunter St

S Logan St

Hidden Ln

95

Late Summer – August & September

6:30am, 8-31



12:00pm, 9-10



2:15pm, 9-11



4:00pm, 9-11



5:30pm, 9-2



6:15pm, 9-7

Early Fall – September & October

9:15am, 10-17



10:45pm, 9-22



12:00pm, 9-30



2:00pm, 10-16



5:15pm, 10-15



6:45pm, 10-1

Late Fall – October & November

9:00am, 11-29



12:00pm, 11-7



3:45pm, 11-28



4:15pm, 10-29



4:30pm, 12-13



6:00pm, 11-29