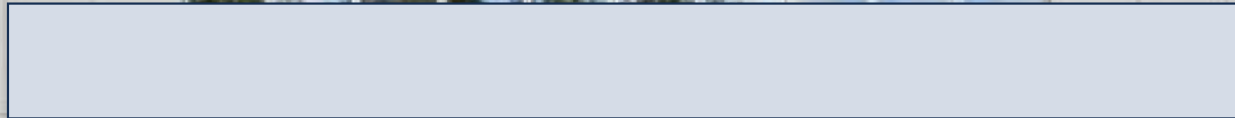


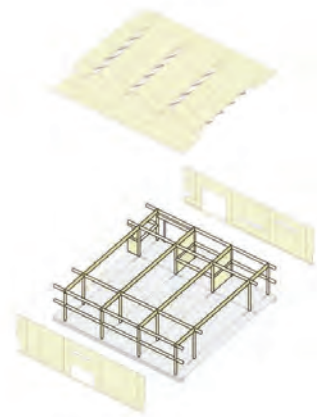
Lighting Portfolio- Vitsoe HQ

Bernardo Bautista, Logan Lesmann, Yasaman Dadras

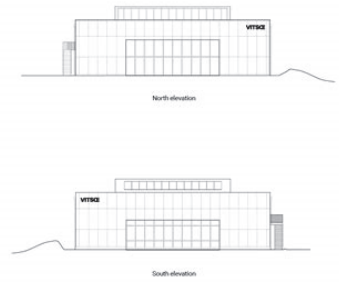
VITSOE



Section B-B



Elevations



Vitsoe

Requirements

1. An introduction explaining the problem, the rationale for the remodel, and the methods used.
2. A description of the model using photographs with annotations.
3. A conclusion which compares the remodel to the original building, explains what you learned about the space and the physical modeling methods.

Introduction



Problem:

The current space is flooded with harsh, overpowering light. In envisioning the new design for our art gallery, we aim to devise thoughtful solutions that embrace and enhance the artwork with appropriately curated lighting.



Rationale for Remodel:

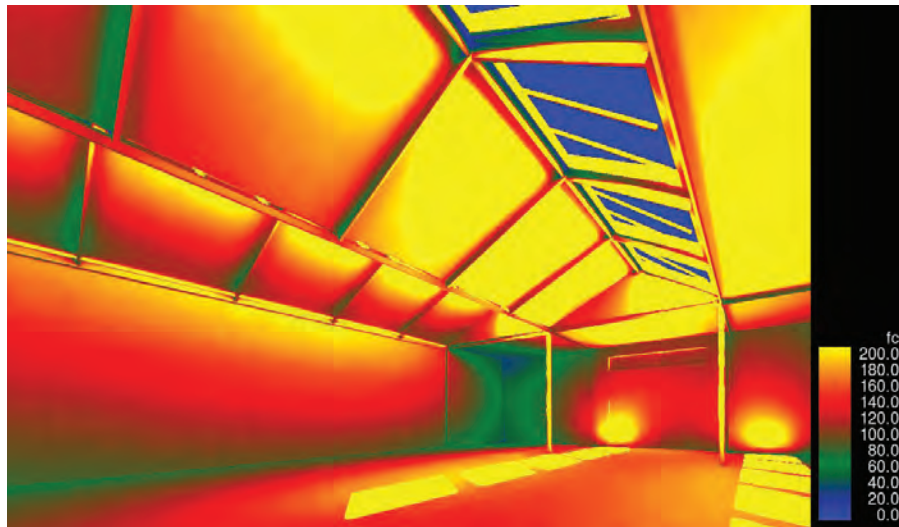
In turning this space into an art gallery, our focus is on creating a welcoming atmosphere with optimal light quality. By prioritizing diffused lighting, we aim to enhance the artwork's presentation, minimizing shadows and glare for a harmonious and engaging experience.



Methods Used:

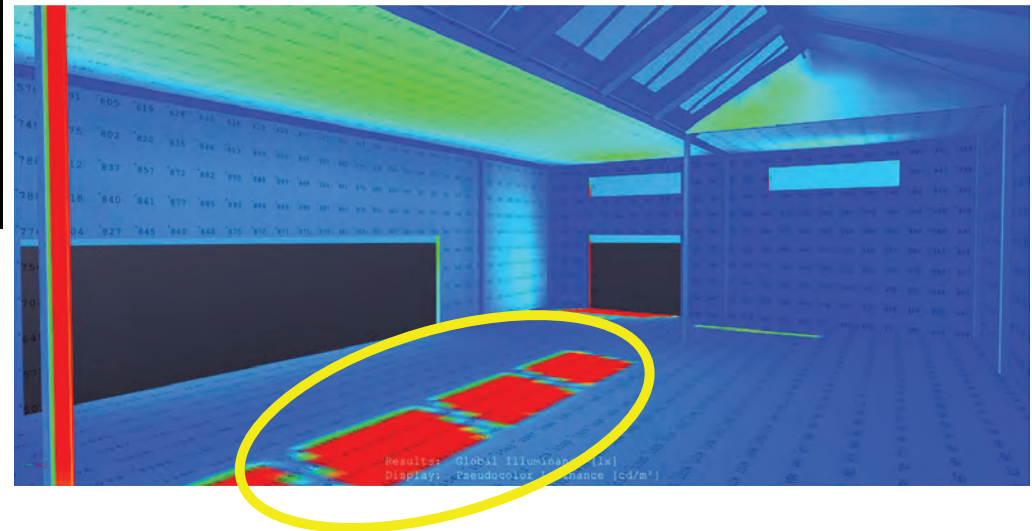
- Remote-Controlled operable shades
- Light Shelves
- Moveable Walls
- Canned Light fixtures
- Sawtooth light wells

Existing Conditions



Foot Candles

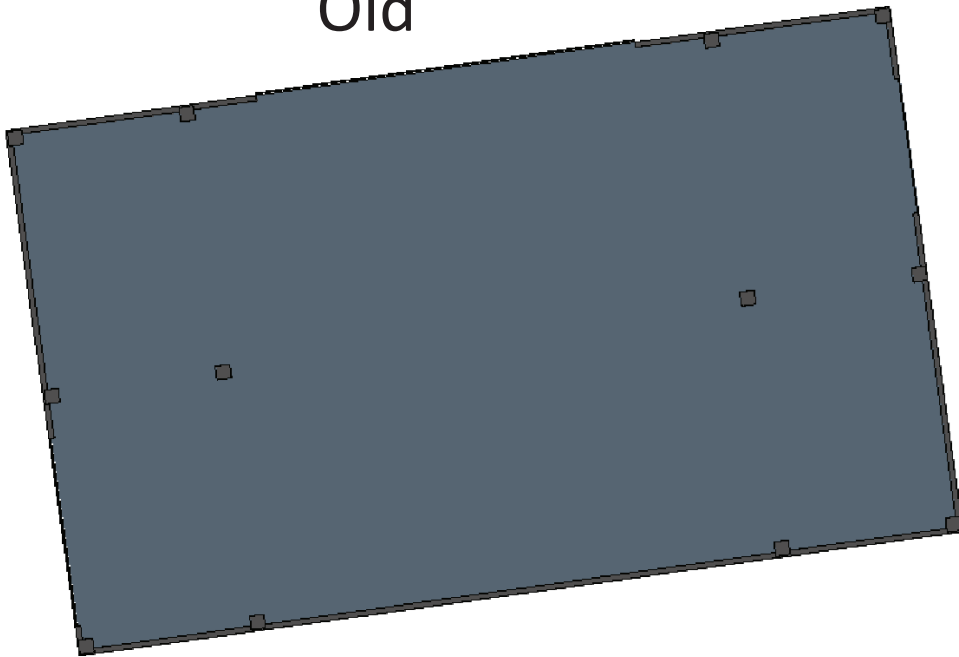
Lux



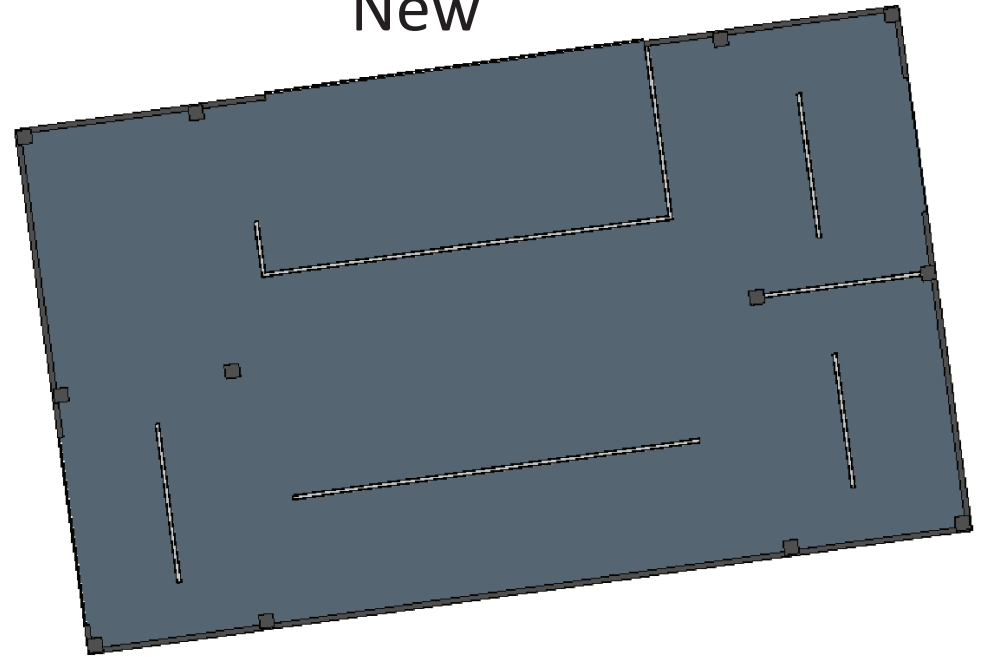


Floor Plan

Old

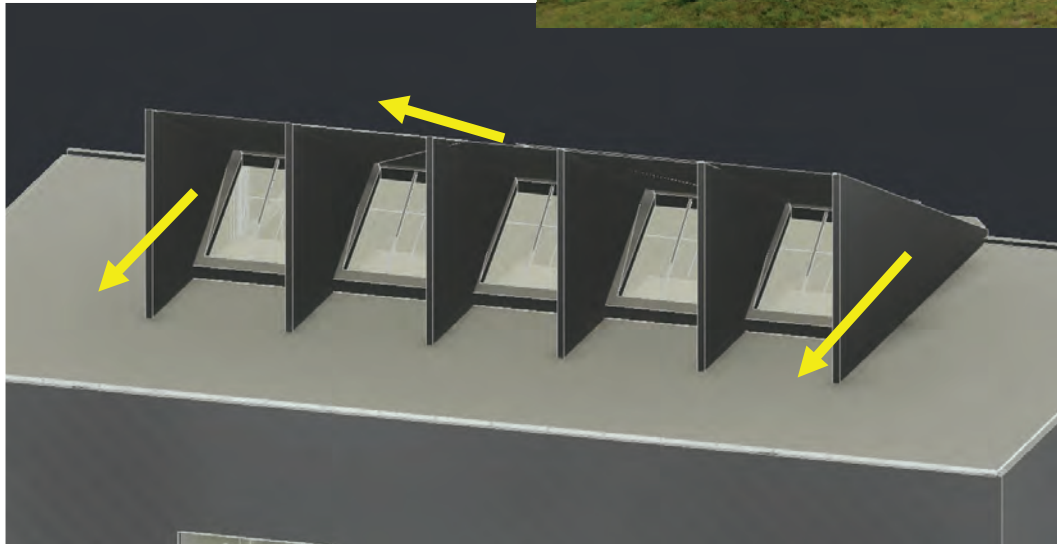


New



Skylight Redesign

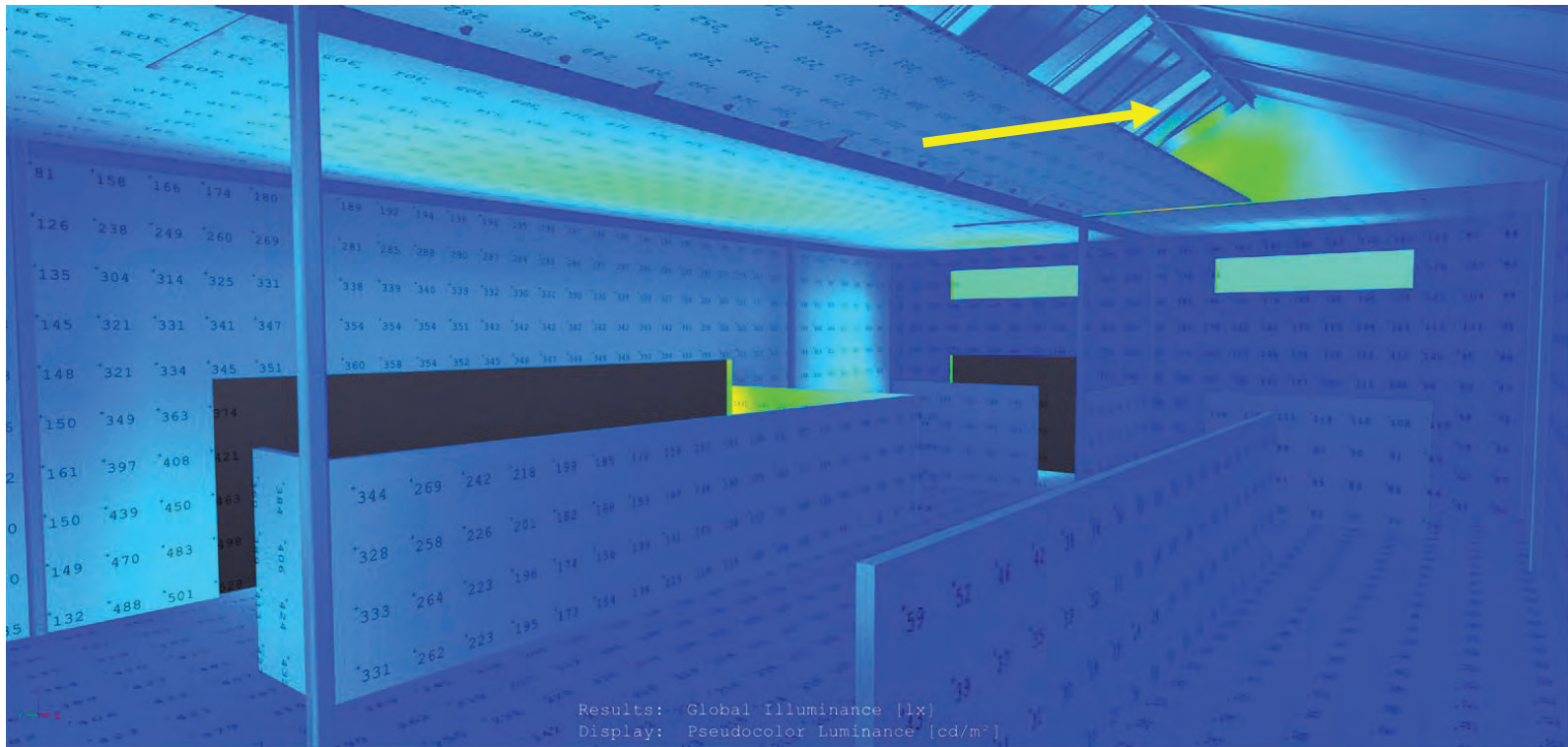
Taking inspiration from the hills, we created a repetition of sawtooths to allow diffused light into the space



Extending Sawtooths

- Creates indirect light
- Minimizes glare
- Helps protect art

Skylight Shelf



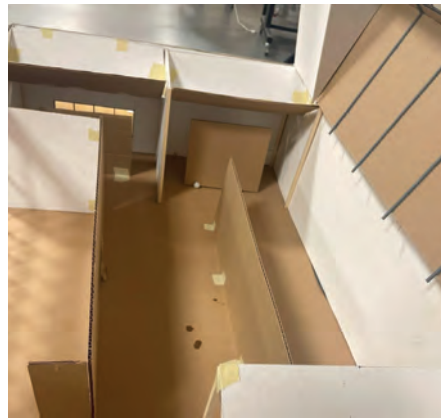
What does the lighting feel like?

Day



Night

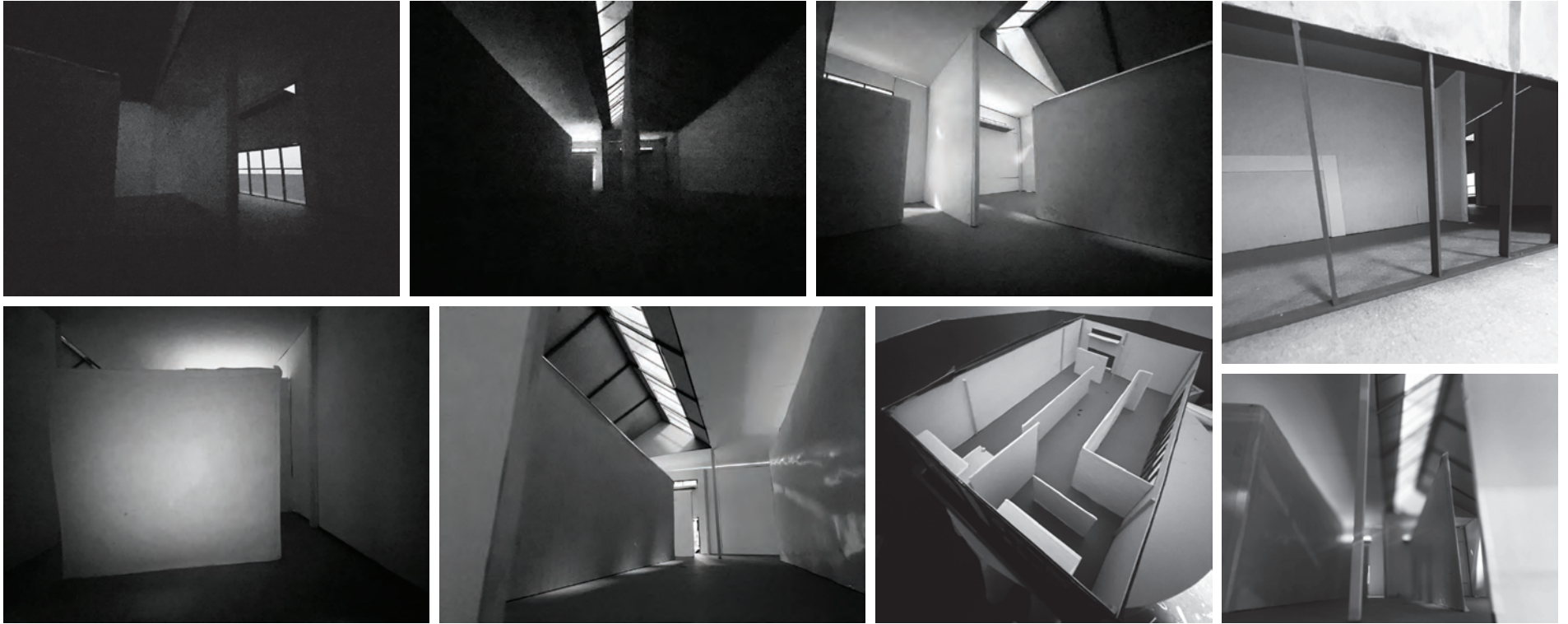




Old Model Images



Improved Model Images



Improved Model Images



MonetPortfolio

The Poplars (1891)



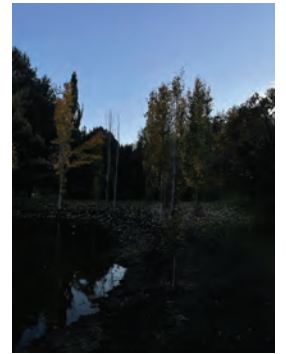
The Poplars: Bernardo Bautista

The Poplars: Yasaman Dadras



The Poplars: Logan Lesmann

Late
Fall



Early
Fall



10:15am

1:08pm

3:15pm

4:22pm

5:05pm

6:24pm

The Polars: Comparison

