



University
of Idaho

UNIVERSITY OF IDAHO “101”

AUGUST 2023



MISSION

The University of Idaho will shape the future through innovative thinking, community engagement and transformative education.

VISION

The University of Idaho will expand the institution's intellectual and economic impact and make higher education relevant and accessible to qualified students of all backgrounds.

VALUES

Excellence - Respect - Integrity - Perseverance - Sustainability



LAND GRANT UNIVERSITIES

“...to teach agriculture, military tactics, and the mechanical arts, as well as classical studies so members of the working classes could obtain a liberal, practical education.”

Land-Grant College Act of 1862 (a.k.a. Morrill Act)

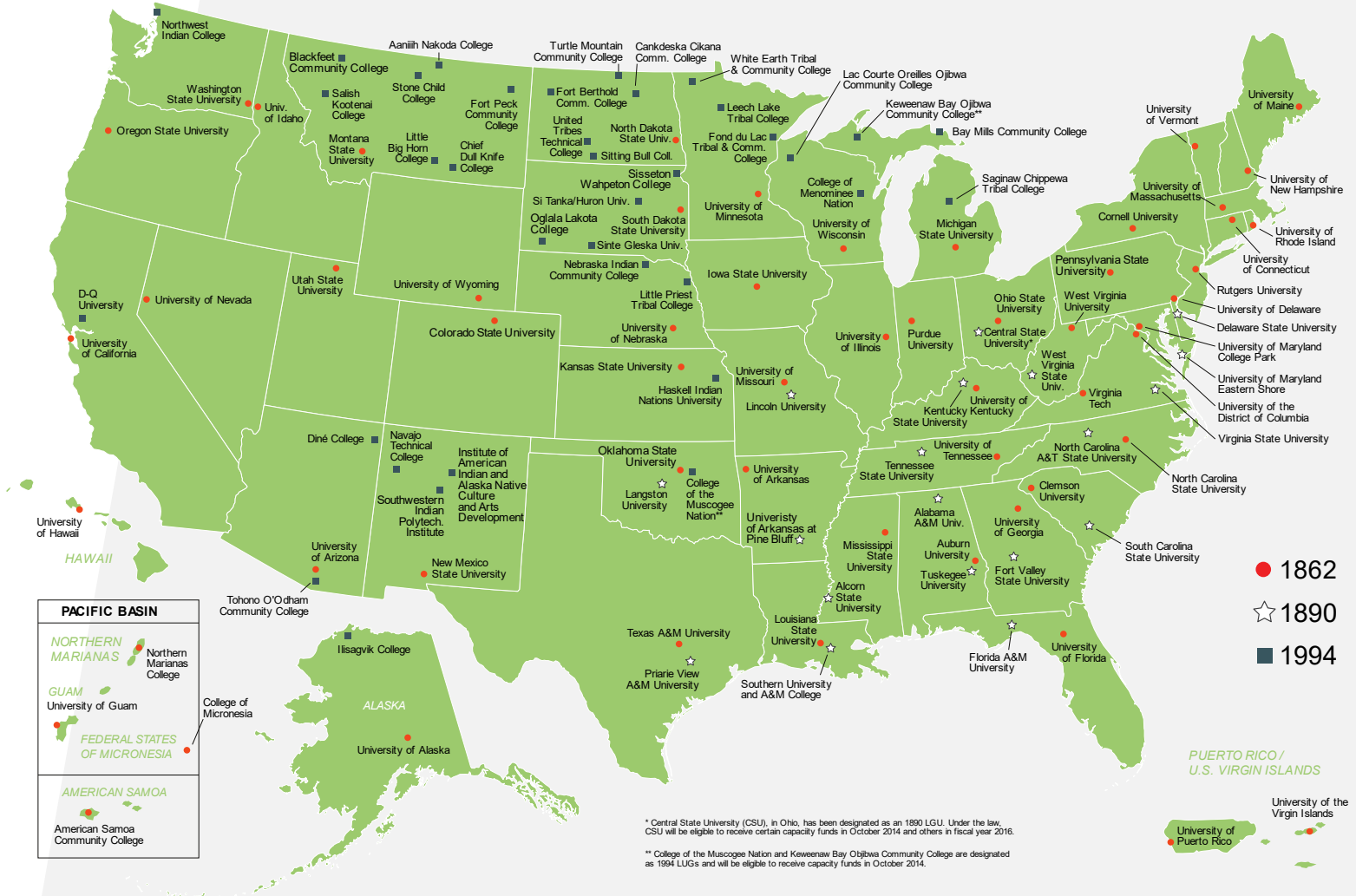
LAND GRANT HERITAGE



United States
Department of
Agriculture

National Institute
of Food and
Agriculture

NIFA LAND-GRANT COLLEGES AND UNIVERSITIES



ACADEMIC AFFAIRS



Colleges and Academic Units

1. Agricultural and Life Sciences
2. Art and Architecture
3. Business and Economics
4. Education, Health and Human Sciences
5. Engineering
6. Law
7. Letters, Arts and Social Sciences
8. Natural Resources
9. Science
-
10. Graduate Studies
-
11. Library
12. WWAMI

Vice Provosts

1. Academic Initiatives
2. Digital Learning Initiatives
3. Faculty
4. Strategic Enrollment Management
5. Student Affairs

Centers

- Boise (southwest)
- Coeur d'Alene (north)
- Idaho Falls (southeast)

Provost's Office

- Staff
- University Policy Coordinator
- Director of Executive Projects
- Faculty processing



COLLEGE OF AGRICULTURAL AND LIFE SCIENCES (CALS)



- 27 undergraduate programs
- 17 graduate programs
- 222 faculty
- \$31M in research (FY23)
- Includes Extension and Ag Experiment Stations

COLLEGE OF ART AND ARCHITECTURE (CAA)

- 6 undergraduate programs
- 5 graduate programs
- 58 faculty
- Programs in Moscow and Boise
- \$1.1M in research (FY23)



COLLEGE OF BUSINESS AND ECONOMICS (CBE)



- 9 undergraduate programs
- 2 graduate programs
- 35 faculty
- The Barker Capital Management and Trading Program allows students unparalleled hands-on experience in financial markets.
- New online BBA degree comprised of multiple certificates

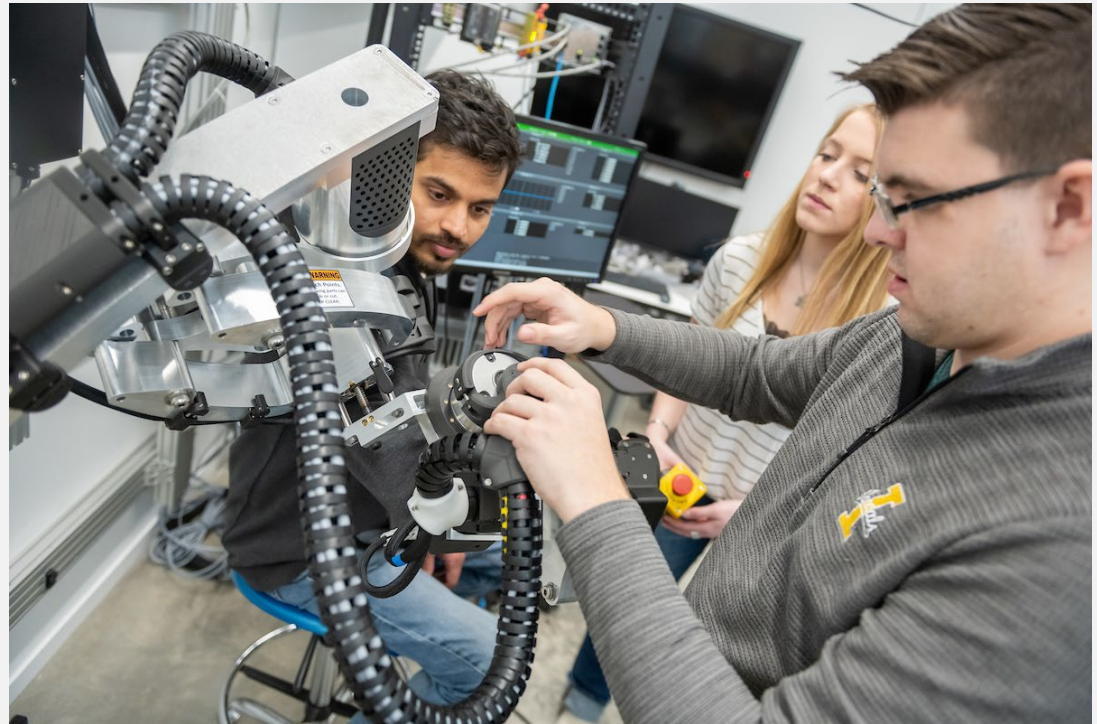
COLLEGE OF EDUCATION, HEALTH AND HUMAN SCIENCES (EHHS)



- 7 undergraduate programs
- 11 graduate programs
- 55 faculty
- Large doctoral programs!
- \$18.8M in research (FY23)

COLLEGE OF ENGINEERING (COE)

- 9 undergraduate programs
- 11 graduate programs
- 149 faculty
- Moscow, CDA, Boise, and Idaho Falls (all four campus locations)
- Senior Capstone Program was ranked 7th in the nation
- \$7.4M in research (FY23)



COLLEGE OF LAW

- Idaho's only law school
- 43 faculty
- 4,000 living alumni
- Moscow and Boise locations
- Bellwood Lecture brings prominent legal figures to campus.



COLLEGE OF LETTERS, ARTS, AND SOCIAL SCIENCES (CLASS)

- The largest college at UI
- 47 undergrad degrees
- 9 departments
- All UI students take multiple courses in CLASS for **GenEd** requirements.



COLLEGE OF NATURAL RESOURCES (CNR)



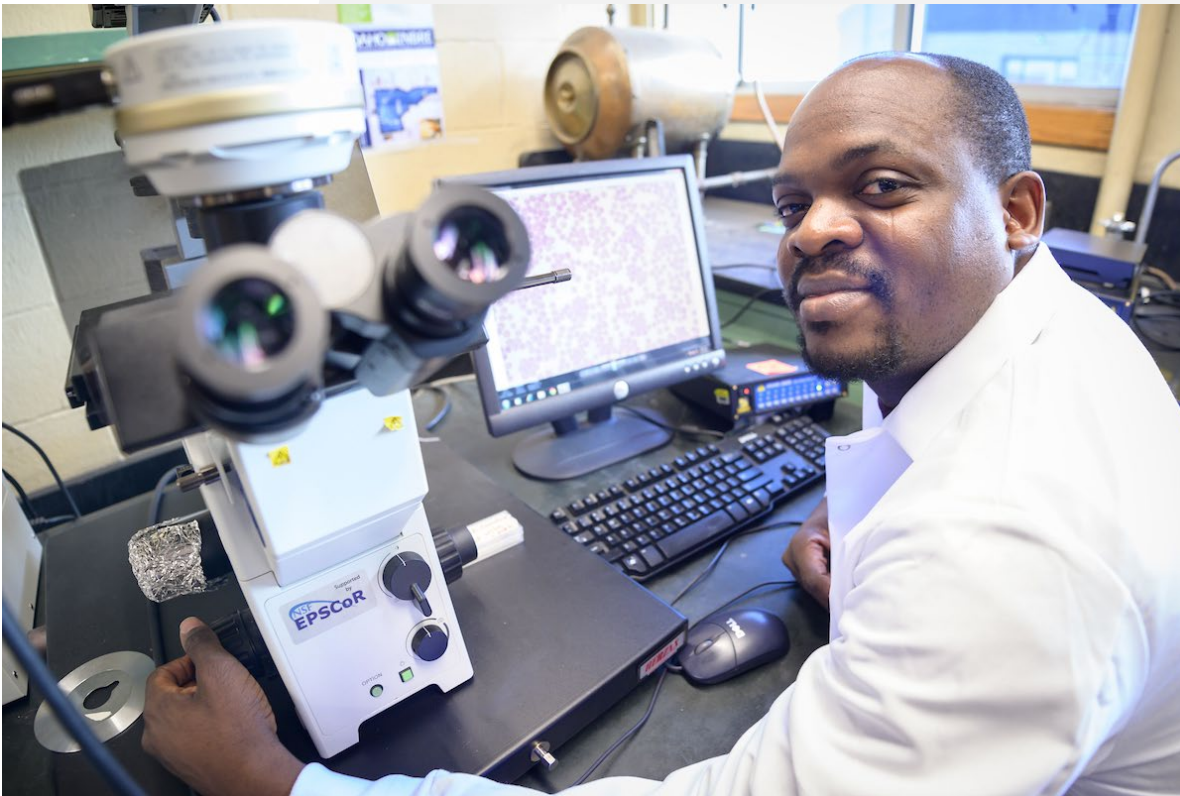
- 9 undergraduate programs
- 4 graduate programs
- 47 faculty
- \$11.5M in research (FY23)
- Pitkin Forest Nursery
- Students have access to the 10,000-acre Experimental Forests north of Moscow.
- MOSS in McCall, Idaho
- Taylor Wilderness Research Station

COLLEGE OF SCIENCE (COS)

- 11 undergraduate programs
- 10 graduate programs
- 104 faculty
- \$8.4M in research (FY23)
- The college is a key player in the Idaho INBRE program, designed to enhance research and create a pipeline to health research careers.



COLLEGE OF GRADUATE STUDIES (COGS)



- More than 200 international graduate students each semester
- More than 600 graduate faculty members
- UI has awarded more than 3,200 doctorates and 25,000 master's degrees since 1889.

WWAMI MEDICAL EDUCATION

- Partnership since 1972 between the University of Washington School of Medicine and the states of Washington, Wyoming, Alaska, Montana, and Idaho
- First two years of medical school in Moscow
- 40 medical students admitted each year
- For Idaho residents



UNIVERSITY LIBRARY

- Largest library in the state
- 1.5M books, journals, etc.
- 2.5M microfilm sources
- 1+M eBooks
- Special Collections
- ILL, Summit, etc.
- 21st Century resources
 - OER support
 - Makerspace (MILL)
 - Audio/Visual Lab



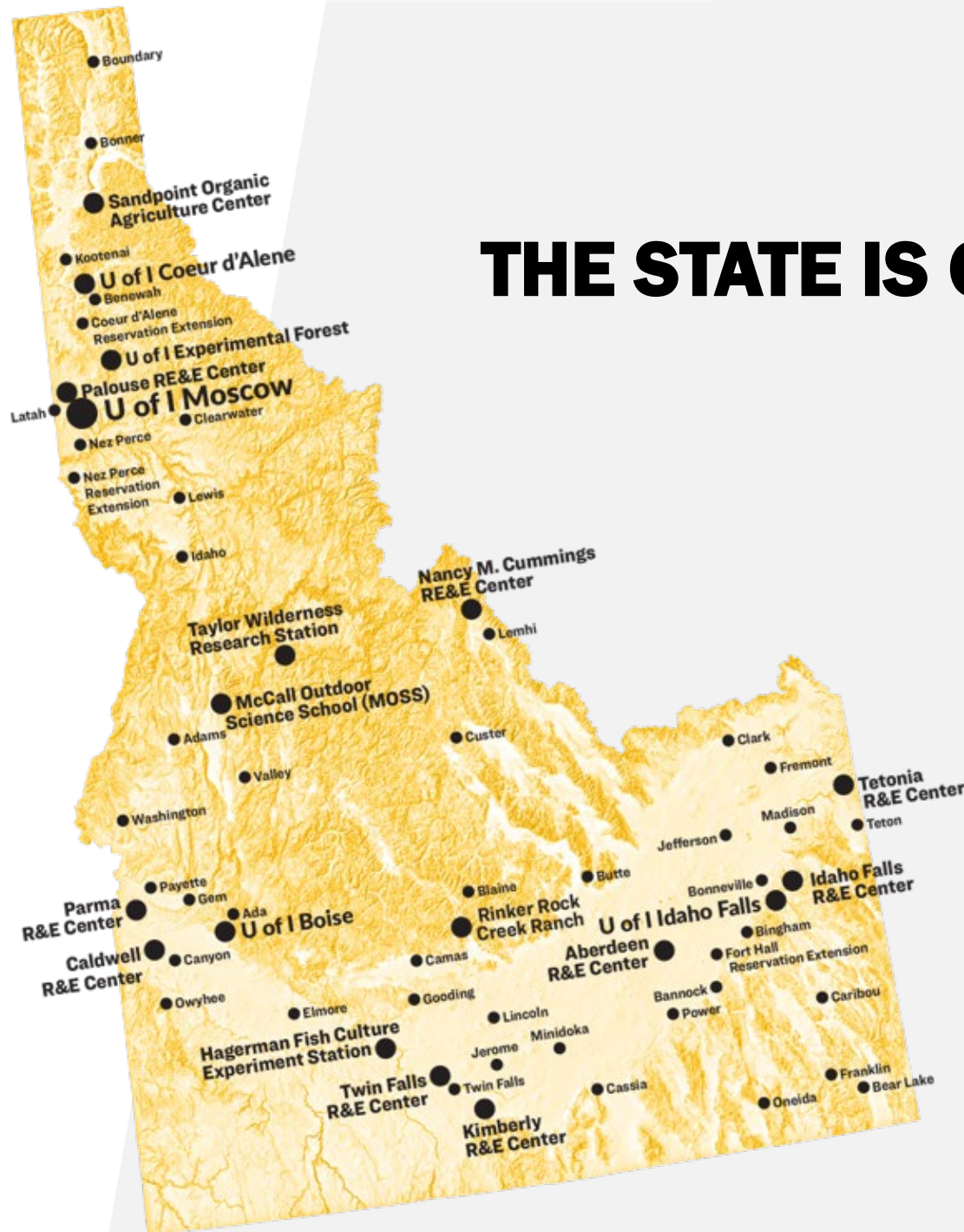


WHERE IS U OF I LOCATED?



THE STATE IS OUR CAMPUS!

- 4 Campuses
- 6 Research Centers
- 9 Extension Centers
- Extension Offices in 42 Counties





U OF I CENTER – COEUR D'ALENE



Undergraduate and graduate programs in six colleges, with approximately 20 faculty on campus



U OF I CENTER - BOISE

Offering
undergraduate
and graduate
degrees in 9
colleges, as well
as professional
development
and community
education





U OF I CENTER – IDAHO FALLS



Premier graduate
research center

\$3.7M research
(FY23)

Partnerships with
the Idaho National
Laboratory (INL),
the Center for
Advanced Energy
Studies (CAES),
and Idaho State
University (ISU)



MCCALL FIELD CAMPUS



- Providing experiential education for more than 80 years
- Award-winning, world-class STEM programs
- More than 40,000 MOSS students served (more than 3,000 per year)
- We hope to make MOSS education accessible to every student in Idaho

UI EXTENSION

BY THE NUMBERS (2020)

- 14 programs & projects
- 90 UI extension educators
- 36 UI extension specialists
- 217,279 face-to-face interactions
- 236,204,222 indirect contacts
- 68 peer-reviewed publications
- 108 professional and scientific journal articles
- 4-H clubs: 13,000 students
- 4-H programs: 70,000 contacts



DISTANCE EDUCATION

FLEXIBLE, FULLY ONLINE LEARNING OFFERINGS

- Hundreds of classes offered in different majors
- **9** fully online undergraduate degrees
- **21** fully online master's programs
- Using what was learned during COVID about adaptable programming to improve online teaching
- “Online Idaho” will connect Idaho students with quality courses from all 8 of Idaho's public institutions





PRIORITIES AND INITIATIVES

- Pillars

- Student Success
- Research Expansion: R1 classification goal
- Telling Our Story

- Initiatives

- Continue Enrollment Growth
- Vandal Hybrid Budget Model
- Expand of Online programs
- Industry Partnerships
- ***Brave. Bold. Unstoppable.*** (capital campaign)
- Univ. of Phoenix affiliation



University
of Idaho

GO VANDALS!