

# Panopto Training Session 3 – Advanced

## OUTCOMES

After this training session, participants should be able to:

1. Embed various resources, web links, and interactive elements into videos using the Panopto editor
2. Create Canvas assignments based on watching Panopto videos, taking quizzes in videos, or student-created video submissions
3. Use Panopto stats to analyze student participation
4. Identify accessibility features within Panopto

## EMBEDDING WEBPAGES AND OTHER WEB-BASED CONTENT

Panopto has a built-in feature for including quizzes into your Panopto videos ([covered in Part 2](#)). However, you can also embed other various features into your videos to promote active student engagement, expand content, collect feedback, and more. All the following features will pause your video and open the embedded content in its place.

### Embedding a YouTube Video

You can embed a YouTube video directly into a Panopto video at any point. This makes it easy to “wrap” a YouTube video with your own prompts or comments. Embedded YouTube videos can be given start and end times so you can show just a clip of a YouTube video.

For more information: [How to Embed a YouTube Video into a Panopto Video](#)

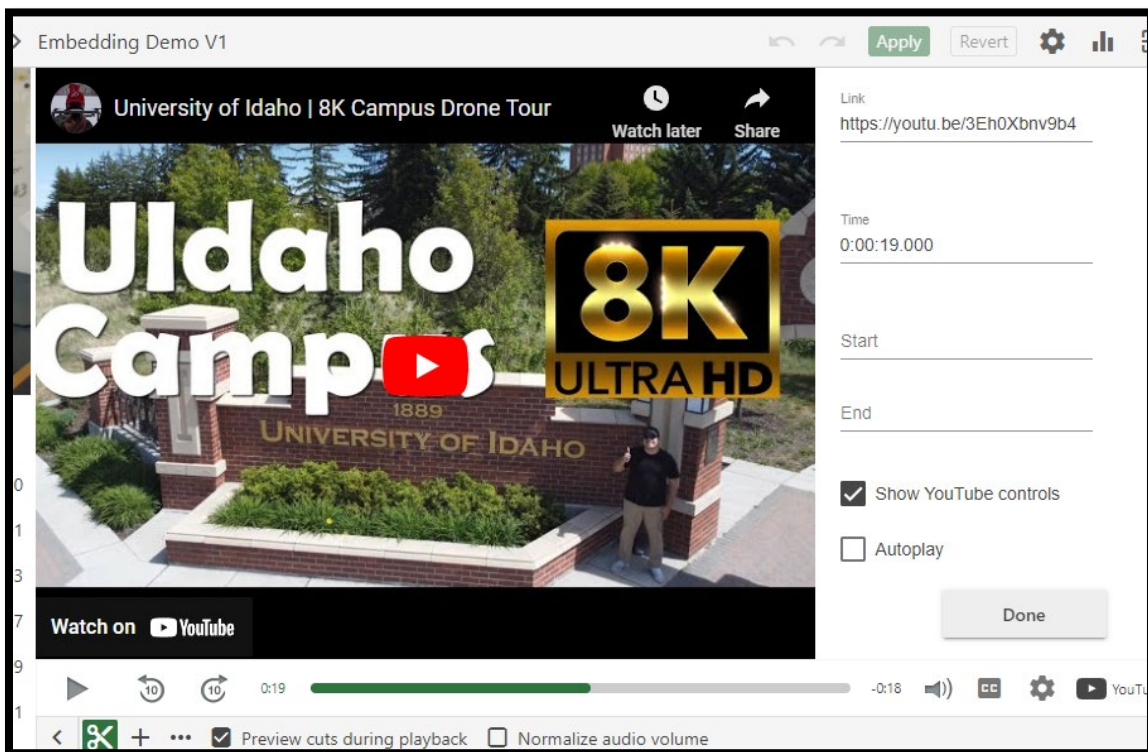


Figure 1: Example of YouTube embedding interface

## Embedding a Webpage

Many websites allow for embedding their content in other websites. You can embed content from an external website inside your Panopto video so that the website opens at whichever point you choose. Simply provide the website's URL and the time you want the site to pop up and Panopto will open the website in your video.

NOTE: Some websites are configured to not allow themselves to be embedded inside an iFrame, which is the HTML element Panopto uses to embed. Unfortunately, there is no way around this limitation—it is controlled by the 3<sup>rd</sup> party website.

For more information: [How to Embed a Webpage into a Panopto Video](#)



Figure 2: University of Idaho website embedded in a Panopto video

## Embedding Other Web-based Content

**NOTE: Be very cautious using the material in this section.** This section requires some HTML knowledge. Also, everything in this section should be tested before being released to students. We recommend contacting [coursedesign@uidaho.edu](mailto:coursedesign@uidaho.edu) in CETL if you have questions or need assistance.

Some other interactive content can also be embedded into your Panopto sessions, as well! Many websites do allow you to embed their content and even give you the information to do it. However, this information is usually buried in HTML embed code. The location of this code—if the website provides it in the first place—can vary. Often, you’ll find the code by clicking an embed icon (see Figure 3 for typical). You may first have to click a share icon somewhere on the website’s page (see Figure 4 for typical).



Figure 3: Typical embed icon

Once you have your embed code, you’re looking for a particular web URL inside of it: the `iframe src` URL. You can add the embed URL to Panopto the same way you would add any other website (see the previous section Embedding a Webpage). This URL’s location can be difficult to find in some embed codes. Please contact [coursedesign@uidaho.edu](mailto:coursedesign@uidaho.edu) and we can walk you through the process.



Figure 4: Various share icons

You should be cautious using embedded activities in Panopto. Here are some considerations before using them:

- **Does it work in your browser?** You can usually test this yourself via the Panopto viewer. Best to test a few browsers, if possible. Does interactivity work as desired? Do results accumulate properly?
- **Does it work in the mobile app?** This should be tested as well, in the *Canvas Student* app to ensure compatibility. Will your interactive app work on mobile, at all? Will it return the student properly at completion?
- **What are you going to do with the data?** If you need to collect names or data, will your interactive app work *inside* Panopto?
- **Do you have enough “room?”** Often free accounts at 3<sup>rd</sup>-party educational interactive apps have a limited amount of participation (e.g., 25-participant maximum per activity). Do you need to accommodate more than your account allows?

There will likely be more considerations for your activity if you are collecting data, feedback, or names. CETL has tested several embedded apps and found Padlet, Poll Everywhere, Qualtrics, Microsoft Forms, and Google Forms work well for feedback. Other various embeds, including Desmos and vClock also work well. Reach out to CETL for more information or help.

# CREATING CANVAS ASSIGNMENTS

Panopto has been integrated into Canvas in such a way that faculty can create assignments in Canvas. There are two different styles of assignments that can be created in Canvas with Panopto: Viewing/Quiz participation and Video Creation assignments.

## Viewing/Quiz Participation Assignments

You can have Panopto automatically grade students on one of two different participation metrics (you cannot use both in the same assignment):

1. Percentage of a video viewed (e.g., if a student watches 85% of the video, they'll get an 85% score)
2. Percentage scored on Panopto quizzes embedded into a video

You'll create these assignments inside Canvas in a normal fashion—provide instructions, assign points and assignment group, and set a due date. However, to setup for a Panopto viewing assignment, you'll change Submission type to External Tool, click Find, and choose Panopto. Determine which grading method to use and choose your video. See Figure 5 for the sequence to follow inside Canvas.

For more information: [How to Use a Panopto Video as a Canvas Assignment](#)

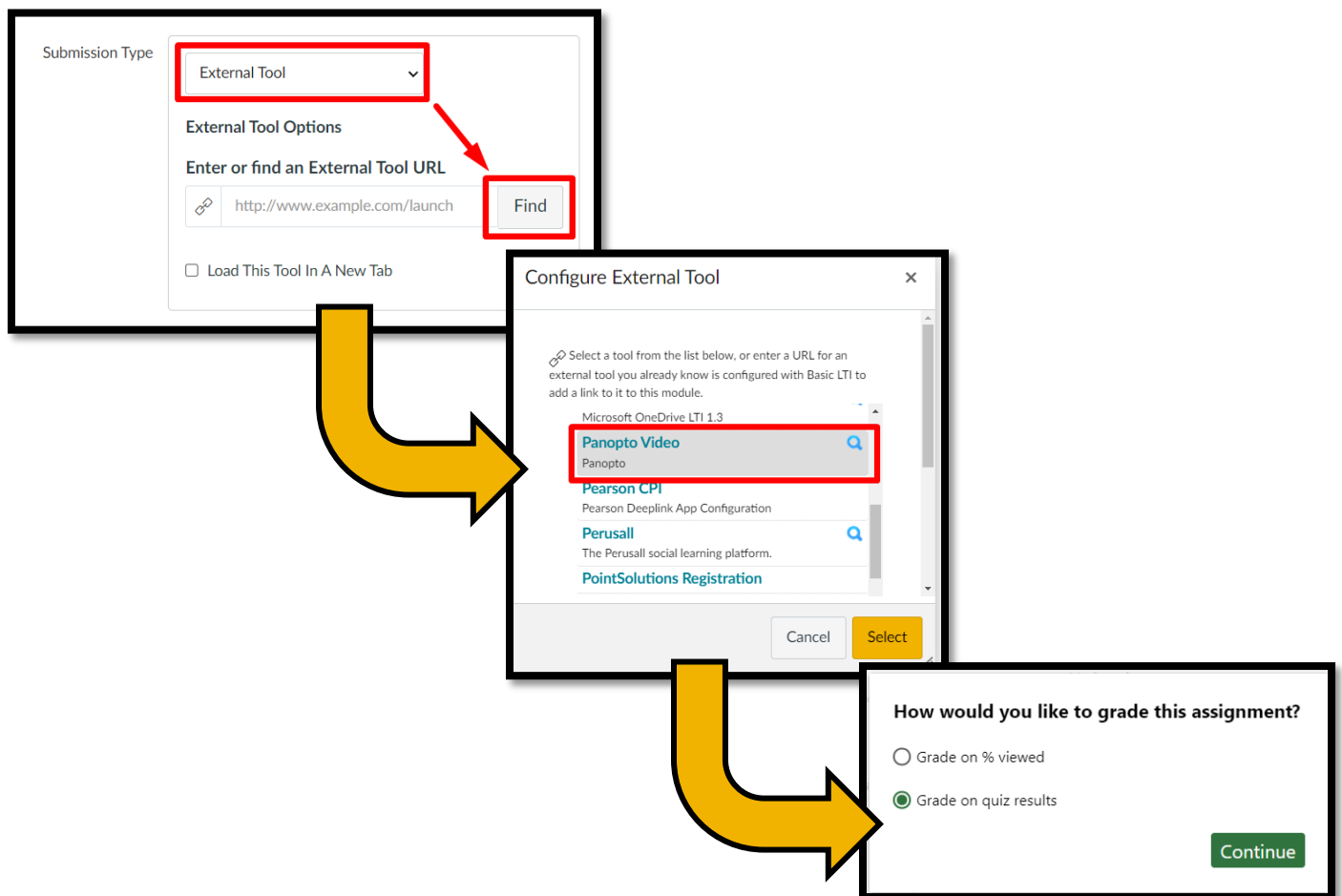


Figure 5: Setting up a Canvas Assignment sequence

## Video Creation Assignments

You can also give students an opportunity to create Panopto videos as a part of a Canvas assignment as well. Your students have all the same access to the Panopto recording and editing features that you do, including embedding and auto-captioning. This feature is readily available for your students and can be utilized for any Canvas assignments you choose with no extra work. The only setup required is to create a special folder at Panopto that gives your students an opportunity to create content in your course; Panopto refers to this as an “Assignment Folder.” This folder allows your students to create and submit videos privately—they can see all their own work but no other students’ work. As the creator of the folder, you can see and control all content submitted to it.

First, go to your course folder in Panopto (via the Panopto Video link in Canvas, see [Enabling Panopto Video Link](#) for instructions to enable this). Then, click the Settings button for your course then the Create Assignment Folder link in the dialog box that opens (see sequence in Figure 6). A folder will be created for your course with the name [assignments] appended to it. Close the Settings dialog box and you’ll see a link to your Assignments Folder at top left of your Panopto library (see Figure 7).

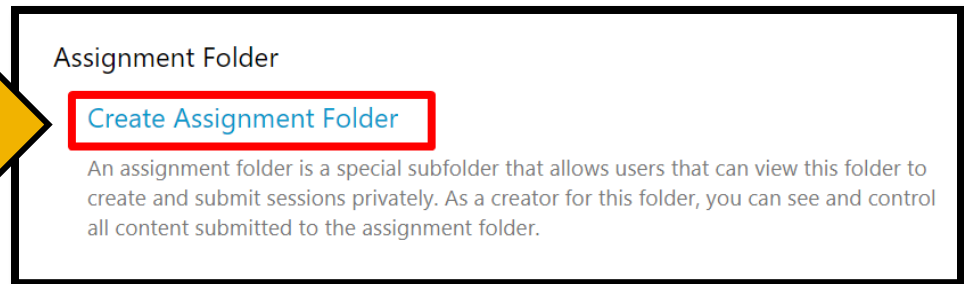
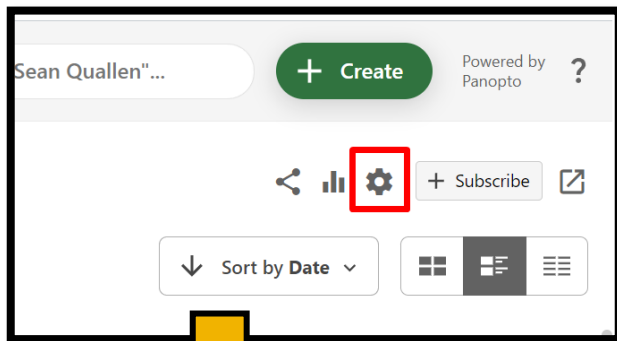


Figure 6: Creating an assignment folder

That’s it—your students can now use the Panopto button in the Canvas text editor to create their own Panopto videos. All you have to do is ensure that you give them the Text Entry option for assignments (see Figure 8).

For more information: [How to Create a Video Assignment in Canvas](#)

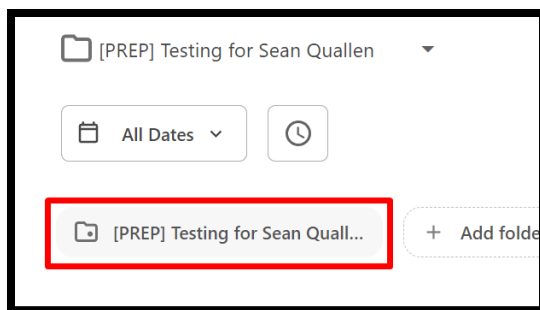


Figure 7: Assignment folder link in Panopto Library

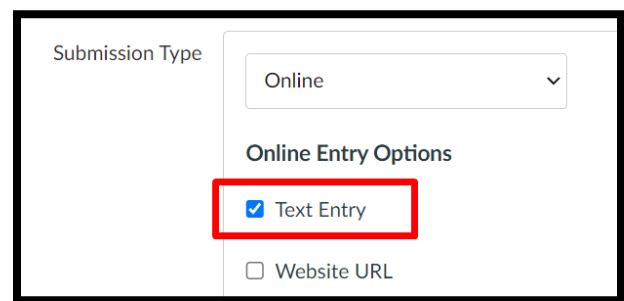


Figure 8: Text entry option for Canvas

# VIEWING ANALYTICS

Panopto provides viewing statistics for all videos in your course. Analytics are available at several levels: An individual video, a folder of videos, a class (folder), or at the creator level. You can also filter out a particular viewer (student) and see all viewing stats associated with that student. Panopto stats provide several items including:

- Views by day
- Number of views
- Minutes delivered
- Percent completed

These statistics can help paint a picture of the participation of your students and your Panopto videos. Time-based plots will show what your students are watching, not watching, or rewatching. An example is shown in Figure 9, showing ~42 students started the video, ~30 students watched to 9:00, and then engagement slowed down for the last 4 minutes of the video.

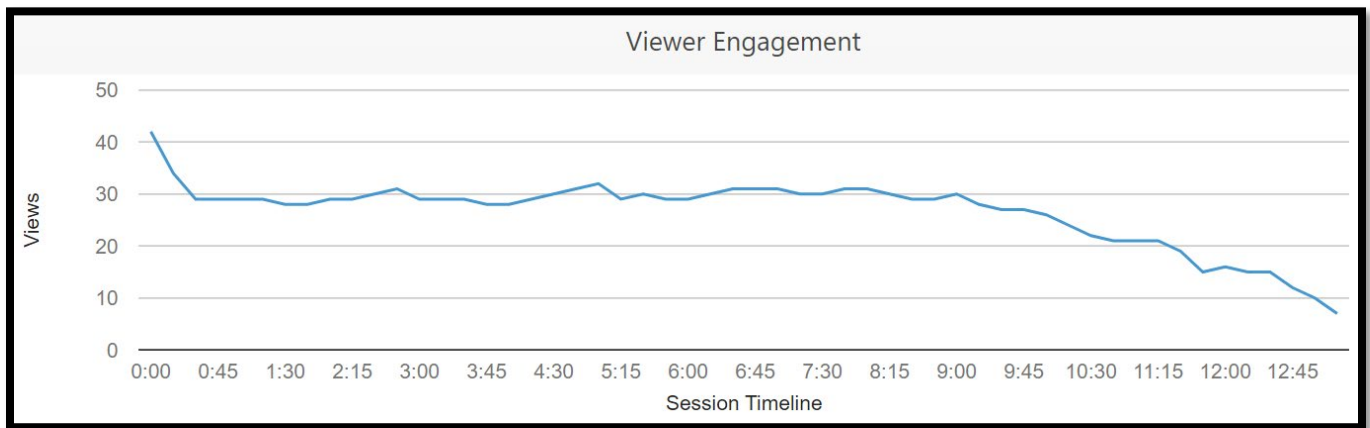


Figure 9: Example engagement plot showing dropoff at end

Panopto will also show individual viewer stats for your videos. Your students' names will be logged with all these statistics (redacted in Figure 10). These statistics can help you determine which students are watching your videos and how many times.

For more information: [How to View User Statistics](#)  
Also: [Learn About Folder and Session Level Statistics](#)

Viewer	Views and Downloads	Minutes Delivered	Average Minutes Delivered	Percent Completed	Notes	Comments
[Redacted]	18	5.1	0.3	65	0	0
[Redacted]	5	10	2	64	0	0
[Redacted]	1	0.2	0.2	5	0	0

Figure 10: Individual viewer stats

# ACCESSIBILITY

Panopto focuses on accessibility by design; you can review Panopto’s Voluntary Product Accessibility Template (VPAT) at [this link](#). Many accessibility features of Panopto are built-in and automatic, like automatic closed captioning, so you don’t have to worry about any extra steps to remember. A few features do require your input—we’ll cover some of both of these categories here.

## Automatic and Built-In Accessibility Features

The aforementioned linked VPAT will describe all accessibility features of Panopto in detail. However, here are three main features:

- **Automatic closed captioning:** Panopto will automatically produce captions for all videos uploaded to it—there are no extra options for you to have to manually enable. Panopto’s automatic interpreter is usually >90% accurate—it is strongly recommended that you review and edit Panopto’s automatic captions.
- **Screen reader compatibility:** Students who use screen reader technology will easily be able to access and use your videos
- **Playback speed control:** Playback speeds can be increased to 2x or reduced to 0.25x to accommodate different cognitive abilities in your students.

## User Controlled Accessibility Settings

Some settings are creator-controlled or require an extra component provided by the creator. These are mentioned in the VPAT, but two settings to know about:

- **Download option for videos:** By default, the option to download your Panopto videos is turned off. This option can be turned on for students at the course or individual video level. For more information: [How to Enable Podcast \(MP4\) Downloads](#)
- **Audio descriptions:** Panopto allows you to upload audio descriptions for your videos. Audio descriptions can provide visually impaired viewers with audio context of what is being presented. These descriptions will be read out loud during the video’s playback. Consider them to be analogous to alt-text for web images.

---

## ONE-ON-ONE HELP

Contact [coursedesign@uidaho.edu](mailto:coursedesign@uidaho.edu) to setup a one-on-one session with a member of the Center for Excellence in Teaching and Learning’s Instructional Design team



Doug Habib  
Asst. Director  
[dhabib@uidaho.edu](mailto:dhabib@uidaho.edu)



Sean Quallen  
Instructional Designer  
[squallen@uidaho.edu](mailto:squallen@uidaho.edu)



Jen Elbek  
Instructional Designer  
[jenelbek@uidaho.edu](mailto:jenelbek@uidaho.edu)