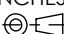
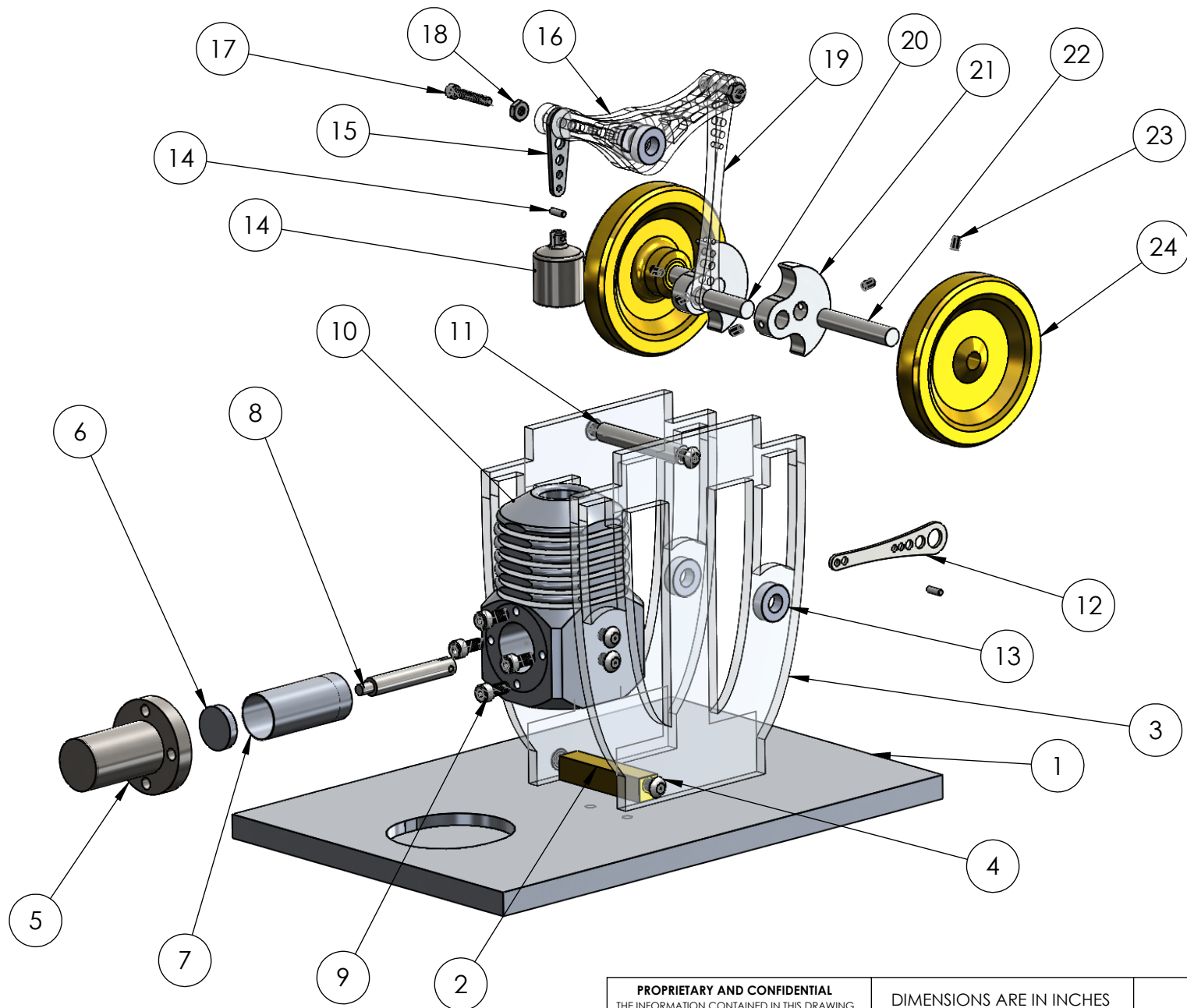

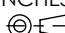


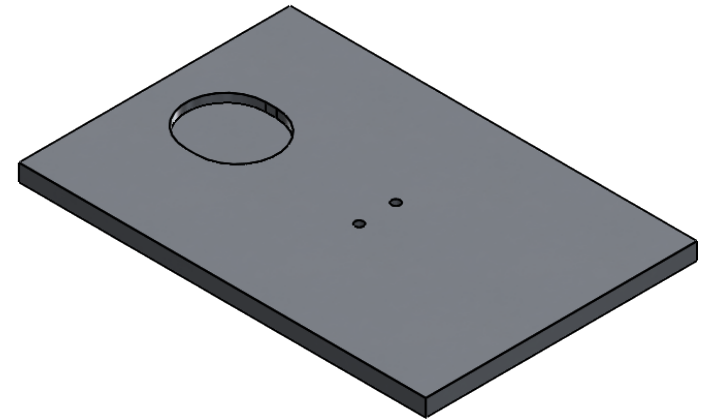
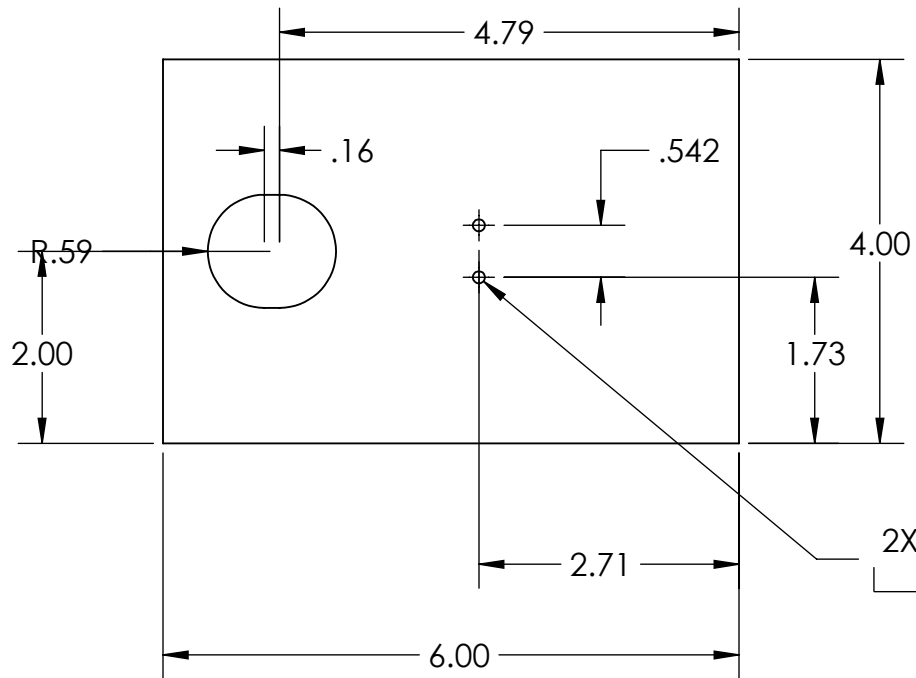
<b>PROPRIETARY AND CONFIDENTIAL</b> THE INFORMATION CONTAINED IN THIS DRAWING IS THE SOLE PROPERTY OF UNIVERSITY OF IDAHO, ME DEPARTMENT. ANY REPRODUCTION IN PART OR AS A WHOLE WITHOUT THE WRITTEN PERMISSION OF UNIVERSITY OF IDAHO, ME DEPARTMENT IS PROHIBITED.		DIMENSIONS ARE IN INCHES THIRD ANGLE PROJECTION 		<b>Boehm Redesign</b>	
MATERIAL:		DESCRIPTION: Final Assembly Boehm Redesign Stirling		<b>UNIVERSITY OF IDAHO ME DEPARTMENT</b>	
DEFAULT TOLERANCES: LINEAR: X. ± .25 X.X ± .1 X.XX ± .01 X.XXX ± .002		ANGULAR: X. ± 2 X.X ± 1 X.XX ± 0.30°		CHECKED BY: XXXXXXXXXX	
DRAWN BY:		DATE: 10/4/2018		PART #:	
FILE NAME: Redesign Sterling.SLDPRT		SCALE: 1:2		QTY: 1	
				SHEET: 1 OF 19	



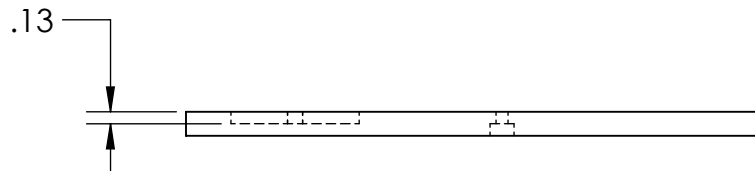
<div>PROPRIETARY AND CONFIDENTIAL</div> <div>THE INFORMATION CONTAINED IN THIS DRAWING IS THE SOLE PROPERTY OF UNIVERSITY OF IDAHO, ME DEPARTMENT. ANY REPRODUCTION IN PART OR AS A WHOLE WITHOUT THE WRITTEN PERMISSION OF UNIVERSITY OF IDAHO, ME DEPARTMENT IS PROHIBITED.</div>		<div>DIMENSIONS ARE IN INCHES</div> <div>THIRD ANGLE PROJECTION</div> <div></div>		<div>Boehm</div> <div>Redesign</div>	
		<div>MATERIAL:</div>			
<div>DEFAULT TOLERANCES:</div> <div>LINEAR: X.±.25 X.X±.1 X.XX±.01 X.XXX±.002</div>		<div>ANGULAR: X.± 2 X.X± 1 X.XX± 0.30'</div>		<div>UNIVERSITY OF IDAHO</div> <div>ME DEPARTMENT</div>	
<div>DESCRIPTION: Final Assembly Boehm Redesign Stirling</div>					
<div>CHECKED BY: XXXXXXXXXX</div>		<div>DATE: XX/XX/XX</div>			
<div>DRAWN BY:</div>		<div>DATE: 10/4/2018</div>		<div>PART #:</div>	<div>QTY: 1</div>
<div>FILE NAME: Redesign Sterling.SLDPRT</div>				<div>SCALE: 1:5</div>	<div>SHEET: 2 OF 19</div>


ITEM NO.	PART NUMBER	McMaster #	QTY.
1	ReDesignBase		1
2	ReDesign Bottom Connecting Hexagon		1
3	GAH		2
4	4-40x1/4 BHCS	91255A106	8
5	ReDesignHeating cylinder		1
6	ReDesign Displace Piston Cover		1
7	ReDesign Displace Piston		1
8	ReDesign piston driving arm		1
9	4-40x1/4 SHCS	91251A106	4
10	honeycomb ReDesign		1
11	ReDesign Top Lever Arm Shaft		1
12	ReDesign Smaller Crank Arm		1
13	.1875bearing		4
14	ReDesign Upper Piston		1
15	ReDesignUpper Piston Crank Arm		1
16	Acrylic Rocker Arm (laser cutter)		1
17	2-56x1/2 SHCS	91251A081	2
18	2-56 nut	90480A003	2
19	Acrylic Large Crank Arm (laser cutter)		1
20	Modified Lower Short Crank		1
21	ReDesign Crank Weights		2
22	Smaller axial larger crank		2
23	2-56x1/8 SS	91375A074	6
24	Redesign Fly Wheel		2

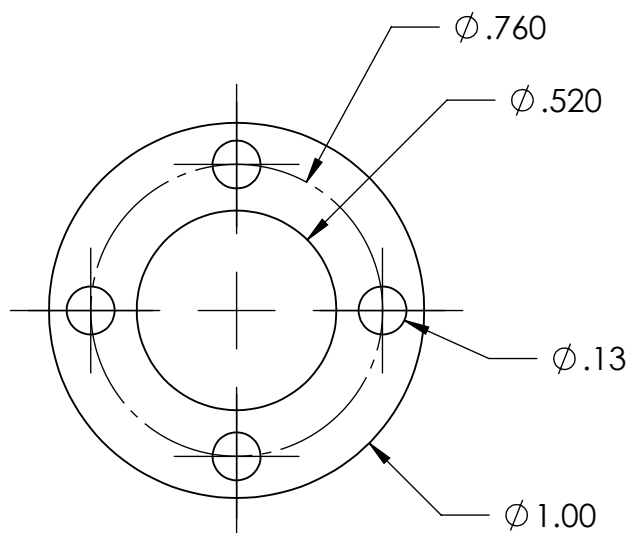
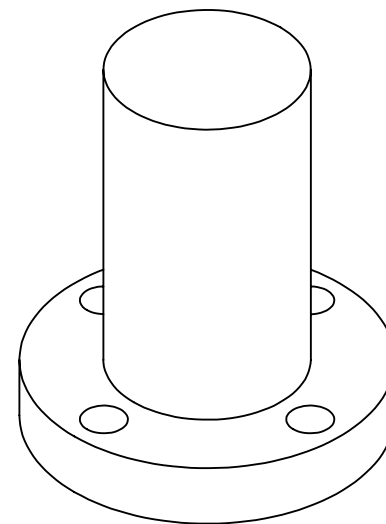
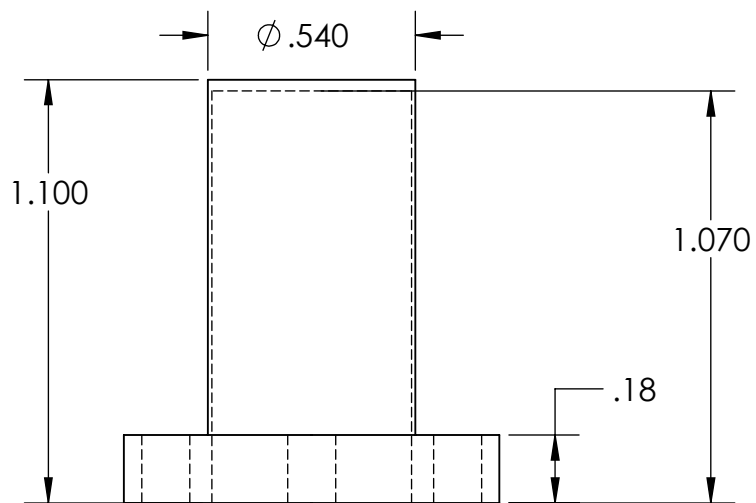
<b>PROPRIETARY AND CONFIDENTIAL</b> THE INFORMATION CONTAINED IN THIS DRAWING IS THE SOLE PROPERTY OF UNIVERSITY OF IDAHO, ME DEPARTMENT. ANY REPRODUCTION IN PART OR AS A WHOLE WITHOUT THE WRITTEN PERMISSION OF UNIVERSITY OF IDAHO, ME DEPARTMENT IS PROHIBITED.		DIMENSIONS ARE IN INCHES THIRD ANGLE PROJECTION 		Boehm Redesign	
MATERIAL:					
DEFAULT TOLERANCES:		DESCRIPTION: Final Assembly Boehm Redesign Stirling		UNIVERSITY OF IDAHO ME DEPARTMENT	
LINEAR: X. ± .25 X.X ± .1 X.XX ± .01 X.XXX ± .002	ANGULAR: X. ± 2 X.X ± 1 X.XX ± 0 30'	CHECKED BY: XXXXXXXXXX	DATE: XX/XX/XX		
		DRAWN BY:	DATE: 10/4/2018	PART #:	QTY: 1
		FILE NAME: Redesian Sterling.SLDprt		SCALE: 1:5	SHEET: 3 OF 19




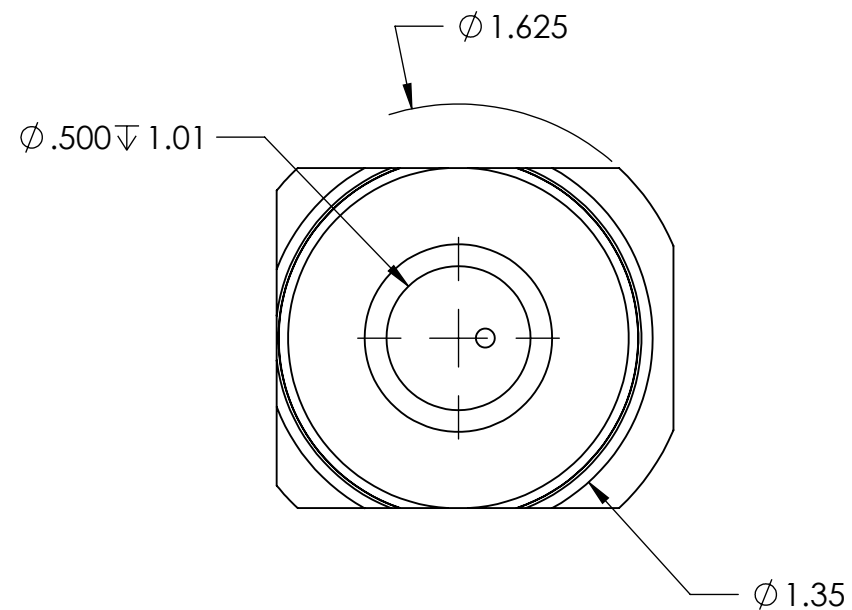
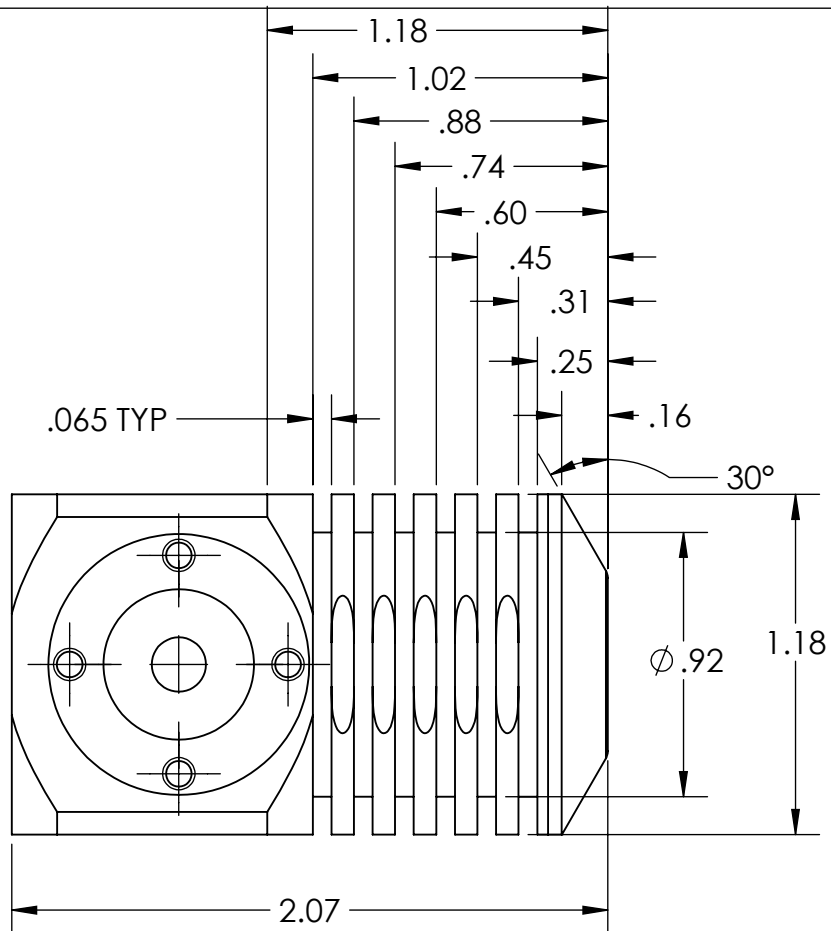
2X  $\varnothing .13 \nabla$  THRU  
 $\square \varnothing 0.25 \nabla 0.13$




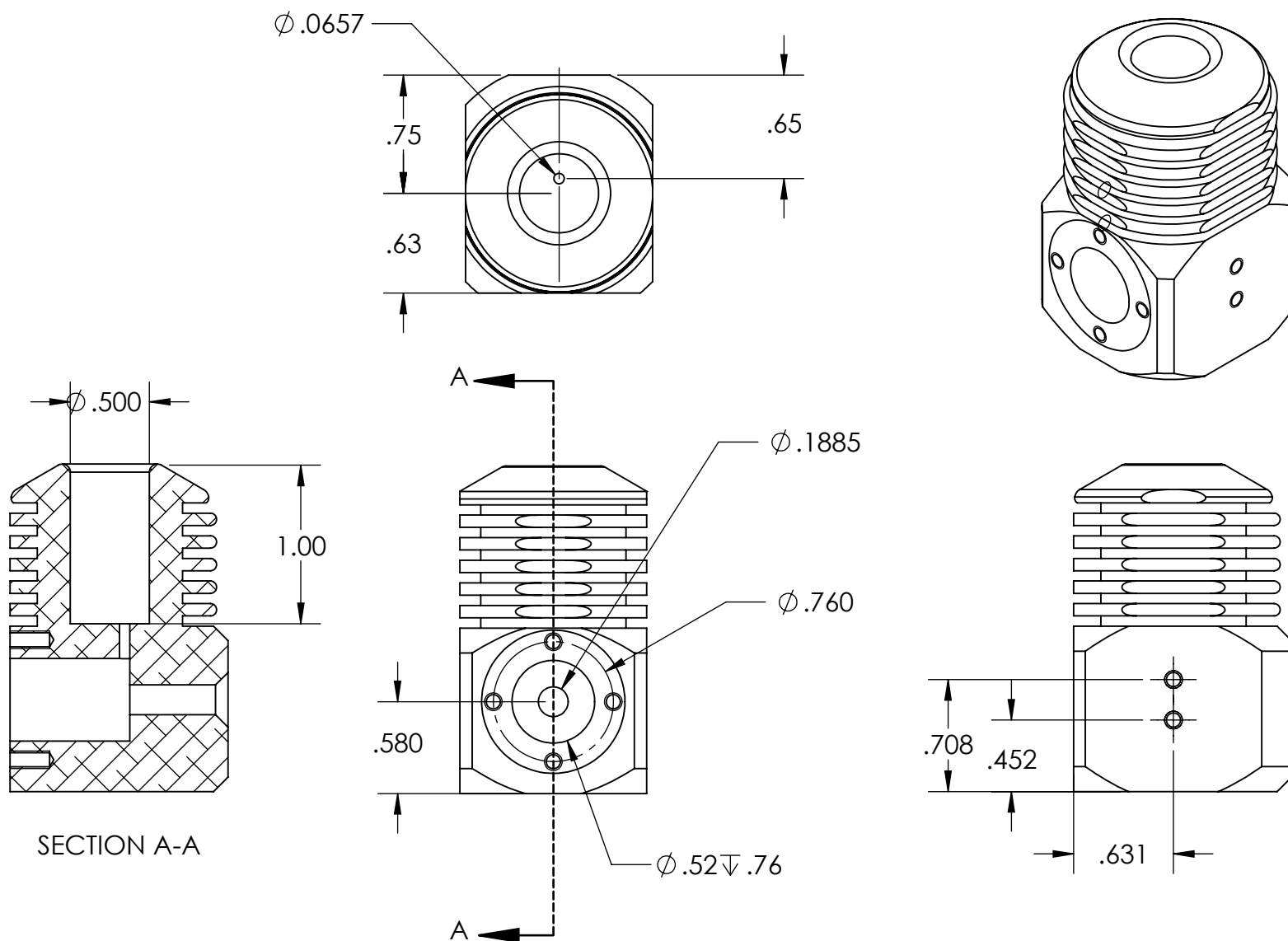
<b>PROPRIETARY AND CONFIDENTIAL</b> THE INFORMATION CONTAINED IN THIS DRAWING IS THE SOLE PROPERTY OF UNIVERSITY OF IDAHO, ME DEPARTMENT. ANY REPRODUCTION IN PART OR AS A WHOLE WITHOUT THE WRITTEN PERMISSION OF UNIVERSITY OF IDAHO, ME DEPARTMENT IS PROHIBITED.		DIMENSIONS ARE IN INCHES THIRD ANGLE PROJECTION 		Boehm Redesign	
		MATERIAL: 6061-T6 (SS)			
DEFAULT TOLERANCES:		DESCRIPTION: Base			UNIVERSITY OF IDAHO ME DEPARTMENT
LINEAR: X. ±.25 X.X ±.1 X.XX ±.01 X.XXX ±.002	ANGULAR: X. ± 2 X.X ± 1 X.XX ± 0.30'	CHECKED BY: XXXXXXXXXXXX	DATE: XX/XX/XX		
		DRAWN BY:	DATE: 10/3/2018	PART #:	
		FILE NAME: ReDesianBase.SLDPRT			SCALE: 1:2
					SHEET: 4 OF 19



<div>PROPRIETARY AND CONFIDENTIAL</div> <div>THE INFORMATION CONTAINED IN THIS DRAWING IS THE SOLE PROPERTY OF UNIVERSITY OF IDAHO, ME DEPARTMENT. ANY REPRODUCTION IN PART OR AS A WHOLE WITHOUT THE WRITTEN PERMISSION OF UNIVERSITY OF IDAHO, ME DEPARTMENT IS PROHIBITED.</div>		<div>DIMENSIONS ARE IN INCHES</div> <div>THIRD ANGLE PROJECTION</div> <div></div>		<div>BOEHM</div> <div>REDESIGN</div>	
		MATERIAL: AISI 304			
DEFAULT TOLERANCES:		DESCRIPTION: Heating Cylinder		UNIVERSITY OF IDAHO ME DEPARTMENT	
LINEAR: X. ± .25 X.X ± .1 X.XX ± .01 X.XXX ± .002	ANGULAR: X. ± 2 X.X ± 1 X.XX ± 0 30'	CHECKED BY: XXXXXXXXXXXX	DATE: XX/XX/XX		
		DRAWN BY:	DATE: 10/4/2018	PART #:	QTY: 1
		FILE NAME: ReDesianHeating cylinder.SLDPRT		SCALE: 2:1	SHEET: 5 OF 19



<b>PROPRIETARY AND CONFIDENTIAL</b> THE INFORMATION CONTAINED IN THIS DRAWING IS THE SOLE PROPERTY OF UNIVERSITY OF IDAHO, ME DEPARTMENT. ANY REPRODUCTION IN PART OR AS A WHOLE WITHOUT THE WRITTEN PERMISSION OF UNIVERSITY OF IDAHO, ME DEPARTMENT IS PROHIBITED.		DIMENSIONS ARE IN INCHES THIRD ANGLE PROJECTION 		<b>Boehm ReDesign</b>	
		MATERIAL: 6063-O			
DEFAULT TOLERANCES:		DESCRIPTION: Heat Exchanger		<b>UNIVERSITY OF IDAHO ME DEPARTMENT</b>	
LINEAR: X.±.25 X.X±.1 X.XX±.01 X.XXX±.002	ANGULAR: X.± 2 X.X± 1 X.XX± 0.30'	CHECKED BY: XXXXXXXXXX	DATE: XX/XX/XX		
		DRAWN BY:	DATE: 10/3/2018	PART #:	QTY: 1
		FILE NAME: honeycomb Redesign2.SLDPRT		SCALE: 1:1	SHEET: 6 OF 19



SECTION A-A

**PROPRIETARY AND CONFIDENTIAL**

THE INFORMATION CONTAINED IN THIS DRAWING IS THE SOLE PROPERTY OF UNIVERSITY OF IDAHO, ME DEPARTMENT. ANY REPRODUCTION IN PART OR AS A WHOLE WITHOUT THE WRITTEN PERMISSION OF UNIVERSITY OF IDAHO, ME DEPARTMENT IS PROHIBITED.

DIMENSIONS ARE IN INCHES  
THIRD ANGLE PROJECTION

MATERIAL: 6063-O

Boehm  
ReDesign

**DEFAULT TOLERANCES:**

LINEAR:  
X.  $\pm .25$   
X.X  $\pm .1$   
X.XX  $\pm .01$   
X.XXX  $\pm .002$

ANGULAR:  
X.  $\pm 2$   
X.X  $\pm 1$   
X.XX  $\pm 0.30'$

DESCRIPTION: Heat Exchanger

CHECKED BY: XXXXXXXXXX

DATE: XX/XX/XX

DRAWN BY:

DATE: 10/3/2018

FILE NAME: honeycomb Redesign2.SLDPR

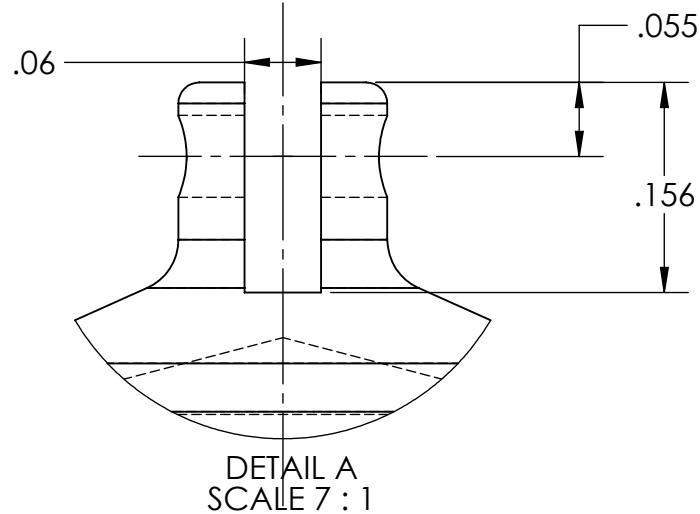
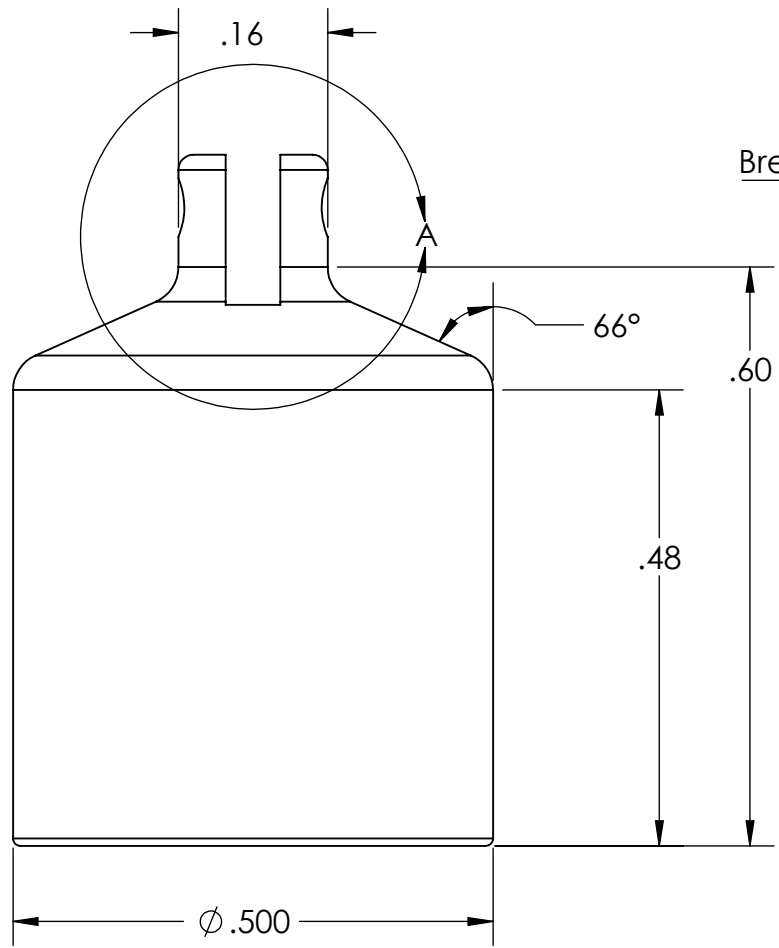
**UNIVERSITY OF IDAHO  
ME DEPARTMENT**

PART #:

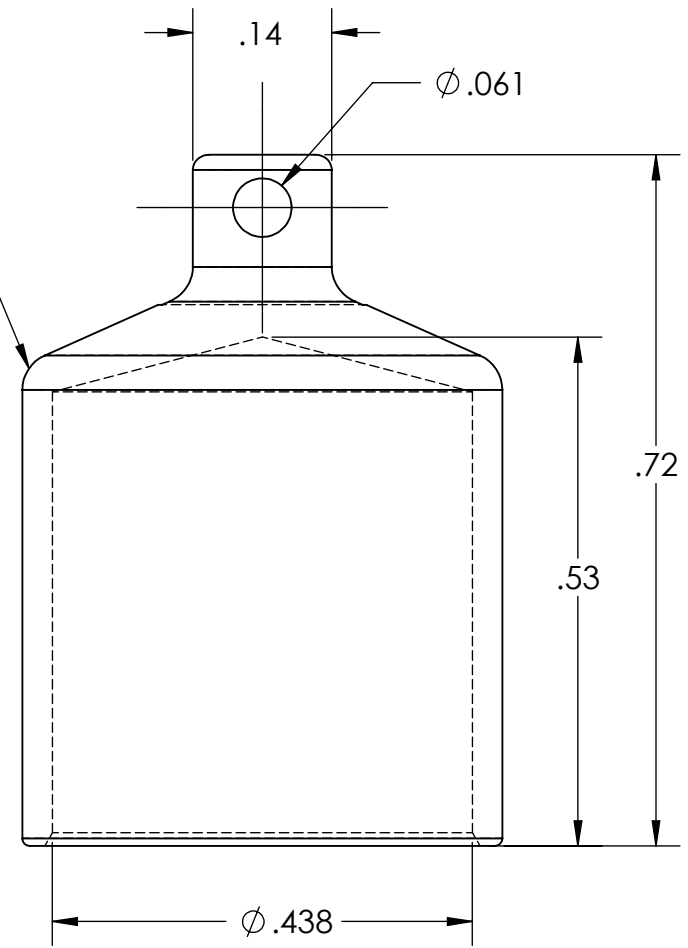
QTY: 1

SCALE: 1:1

SHEET: 7 OF 19

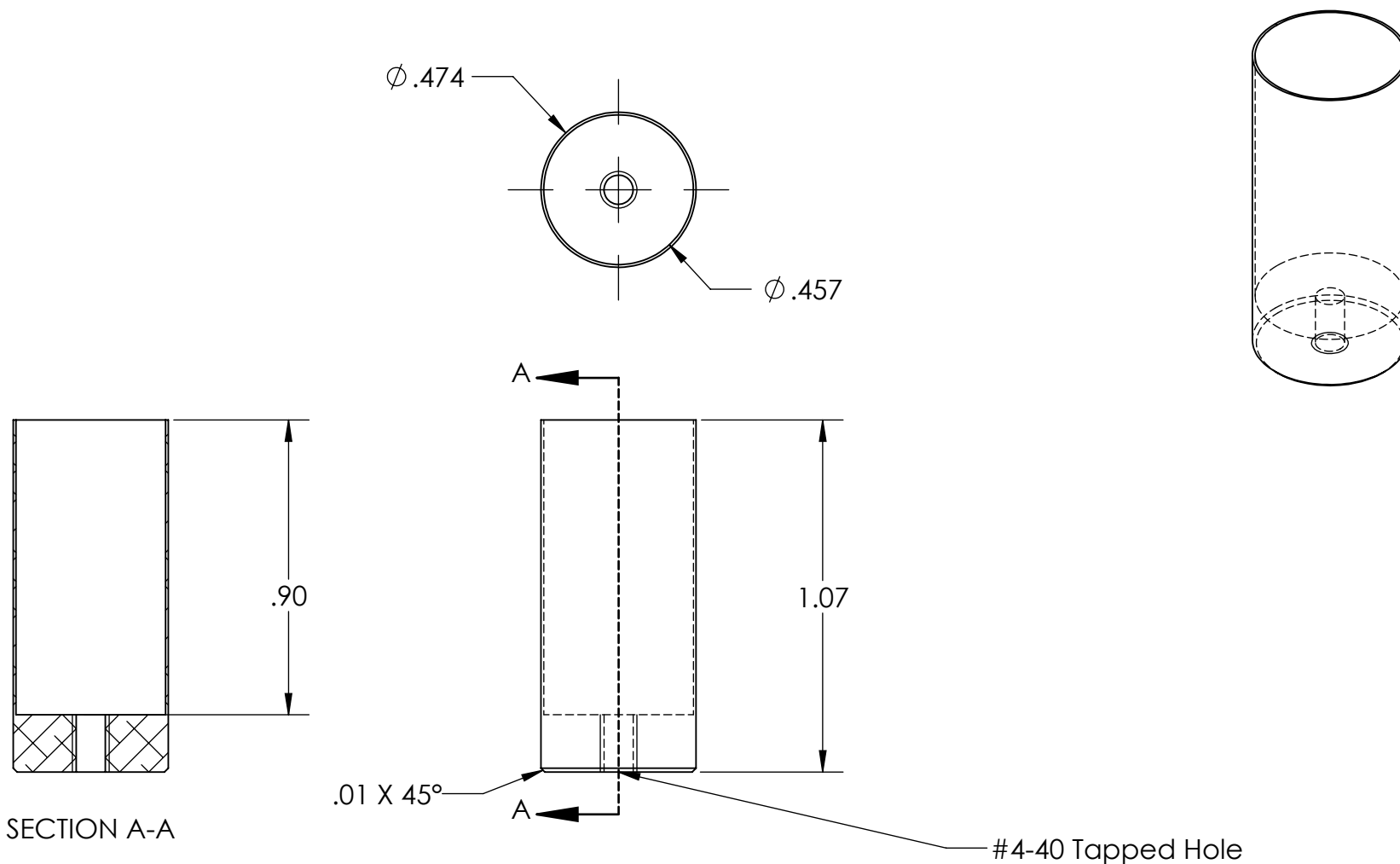



Break Edge Typ.

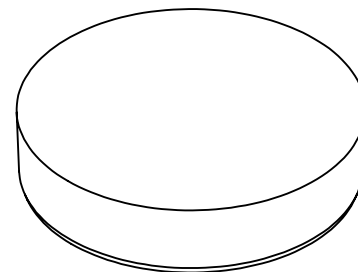
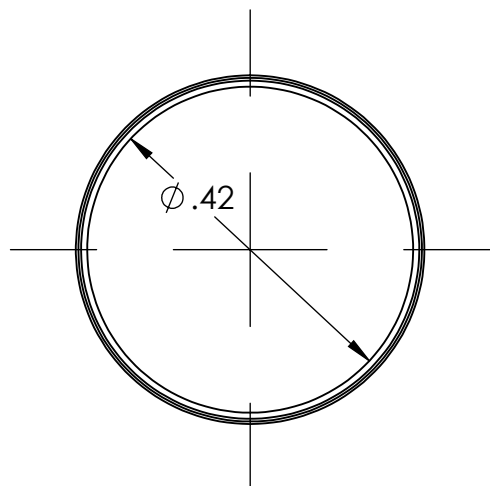
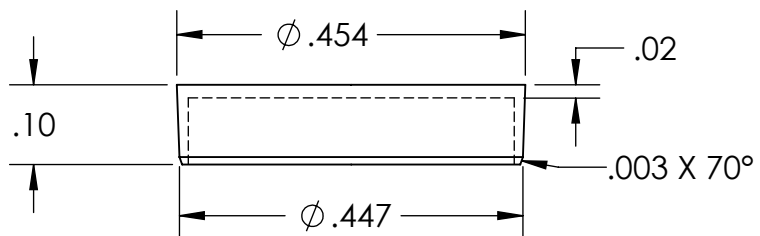



<b>PROPRIETARY AND CONFIDENTIAL</b> THE INFORMATION CONTAINED IN THIS DRAWING IS THE SOLE PROPERTY OF UNIVERSITY OF IDAHO, ME DEPARTMENT. ANY REPRODUCTION IN PART OR AS A WHOLE WITHOUT THE WRITTEN PERMISSION OF UNIVERSITY OF IDAHO, ME DEPARTMENT IS PROHIBITED.		DIMENSIONS ARE IN INCHES THIRD ANGLE PROJECTION		Boehm ReDesign	
DEFAULT TOLERANCES: LINEAR: X. ± .25 X.X ± .1 X.XX ± .01 X.XXX ± .002		MATERIAL: AISI 304		<b>UNIVERSITY OF IDAHO          ME DEPARTMENT</b>	
DESCRIPTION: Power Piston		CHECKED BY: XXXXXXXXXX		DATE: XX/XX/XX	
DRAWN BY:		DATE: 10/3/2018		PART #:	
FILE NAME: ReDesignupper piston.SLDprt		SCALE: 2:1		QTY: 1 SHEET: 8 OF 19	

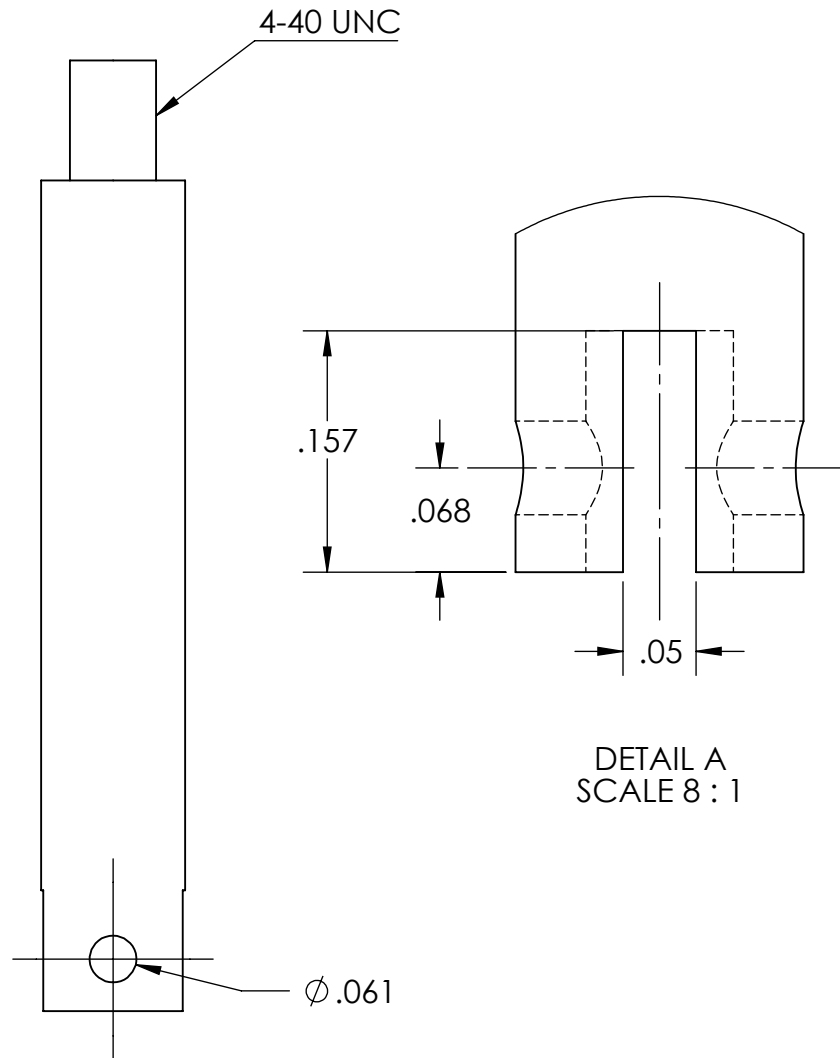
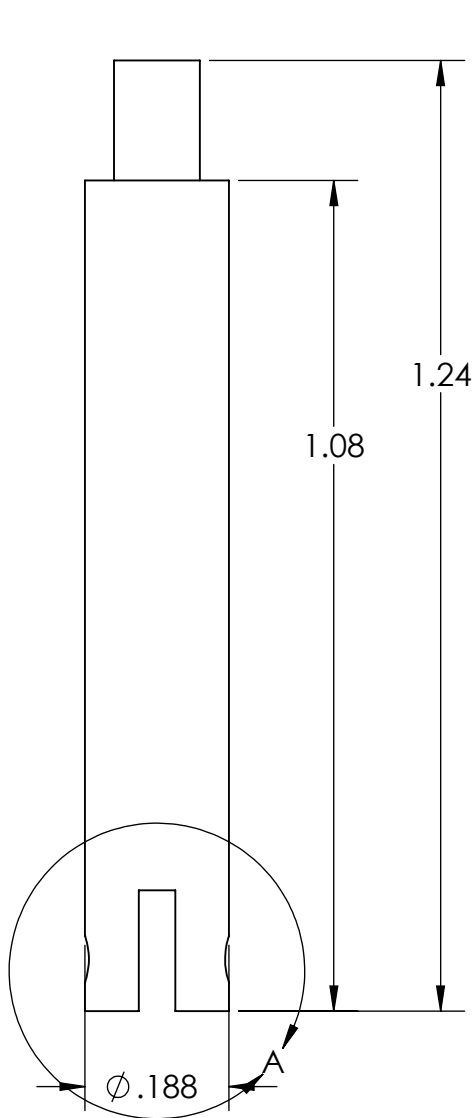




<b>PROPRIETARY AND CONFIDENTIAL</b> THE INFORMATION CONTAINED IN THIS DRAWING IS THE SOLE PROPERTY OF UNIVERSITY OF IDAHO, ME DEPARTMENT. ANY REPRODUCTION IN PART OR AS A WHOLE WITHOUT THE WRITTEN PERMISSION OF UNIVERSITY OF IDAHO, ME DEPARTMENT IS PROHIBITED.		DIMENSIONS ARE IN INCHES THIRD ANGLE PROJECTION 		BOEHM REDESIGN	
		MATERIAL: 6061-T6 (SS)			
DEFAULT TOLERANCES:		DESCRIPTION: Displace Piston		UNIVERSITY OF IDAHO ME DEPARTMENT	
LINEAR: X. ± .25 X.X ± .1 X.XX ± .01 X.XXX ± .002	ANGULAR: X. ± 2 X.X ± 1 X.XX ± 0 30'	CHECKED BY: XXXXXXXXXXXX	DATE: XX/XX/XX		
		DRAWN BY:	DATE: 10/4/2018	PART #:	QTY: 1
		FILE NAME: ReDesignDisplace Piston.SLDPRT		SCALE: 2:1	SHEET: 9 OF 19



<b>PROPRIETARY AND CONFIDENTIAL</b> THE INFORMATION CONTAINED IN THIS DRAWING IS THE SOLE PROPERTY OF UNIVERSITY OF IDAHO, ME DEPARTMENT. ANY REPRODUCTION IN PART OR AS A WHOLE WITHOUT THE WRITTEN PERMISSION OF UNIVERSITY OF IDAHO, ME DEPARTMENT IS PROHIBITED.		DIMENSIONS ARE IN INCHES THIRD ANGLE PROJECTION 		<b>BOEHM REDESIGN</b>	
		MATERIAL: 6061-T6 (SS)			
DEFAULT TOLERANCES:		DESCRIPTION: Displace Piston Cover		<b>UNIVERSITY OF IDAHO ME DEPARTMENT</b>	
LINEAR: X. ±.25 X.X ±.1 X.XX ±.01 X.XXX ±.002	ANGULAR: X. ± 2 X.X ± 1 X.XX ± 0.30°	CHECKED BY: XXXXXXXXXXXX	DATE: XX/XX/XX		
		DRAWN BY:	DATE: 10/3/2018	PART #:	QTY: 1
		FILE NAME: ReDesignDisplace Piston Cover.SLDPRT		SCALE: 4:1	SHEET: 10 OF 19



**PROPRIETARY AND CONFIDENTIAL**

THE INFORMATION CONTAINED IN THIS DRAWING IS THE SOLE PROPERTY OF UNIVERSITY OF IDAHO, ME DEPARTMENT. ANY REPRODUCTION IN PART OR AS A WHOLE WITHOUT THE WRITTEN PERMISSION OF UNIVERSITY OF IDAHO, ME DEPARTMENT IS PROHIBITED.

DIMENSIONS ARE IN INCHES  
THIRD ANGLE PROJECTION 

MATERIAL: Plain Carbon Steel

Boehm  
ReDesign

**DEFAULT TOLERANCES:**

LINEAR:  
X.  $\pm .25$   
X.X  $\pm .1$   
X.XX  $\pm .01$   
X.XXX  $\pm .002$

ANGULAR:  
X.  $\pm 2$   
X.X  $\pm 1$   
X.XX  $\pm 0.30$

DESCRIPTION: Driving Arm for Displacement Piston

CHECKED BY: XXXXXXXXXX

DATE: XX/XX/XX

DRAWN BY:

DATE: 10/3/2018

FILE NAME: ReDesignpiston driving arm.SLDPRT

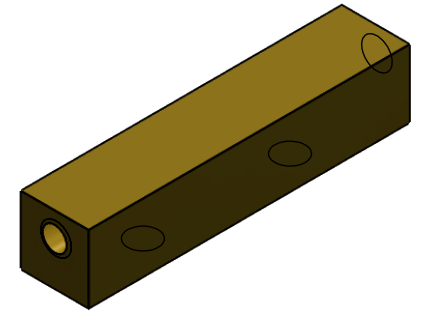
**UNIVERSITY OF IDAHO  
ME DEPARTMENT**

PART #:

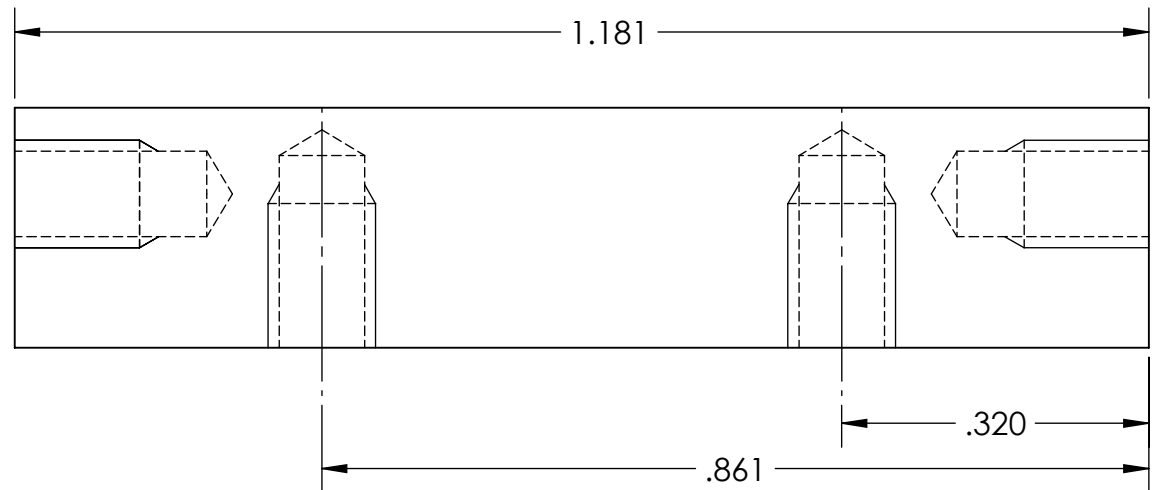
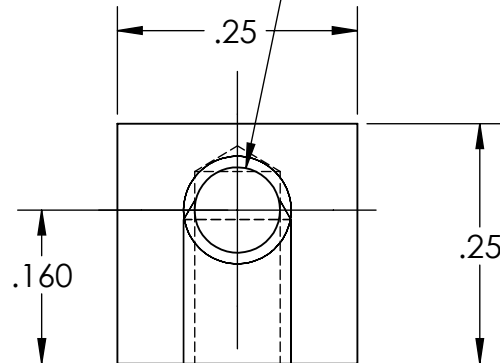
QTY: 1

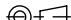
SCALE: 2:1

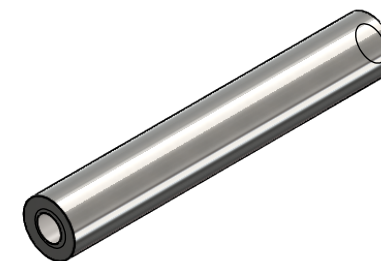
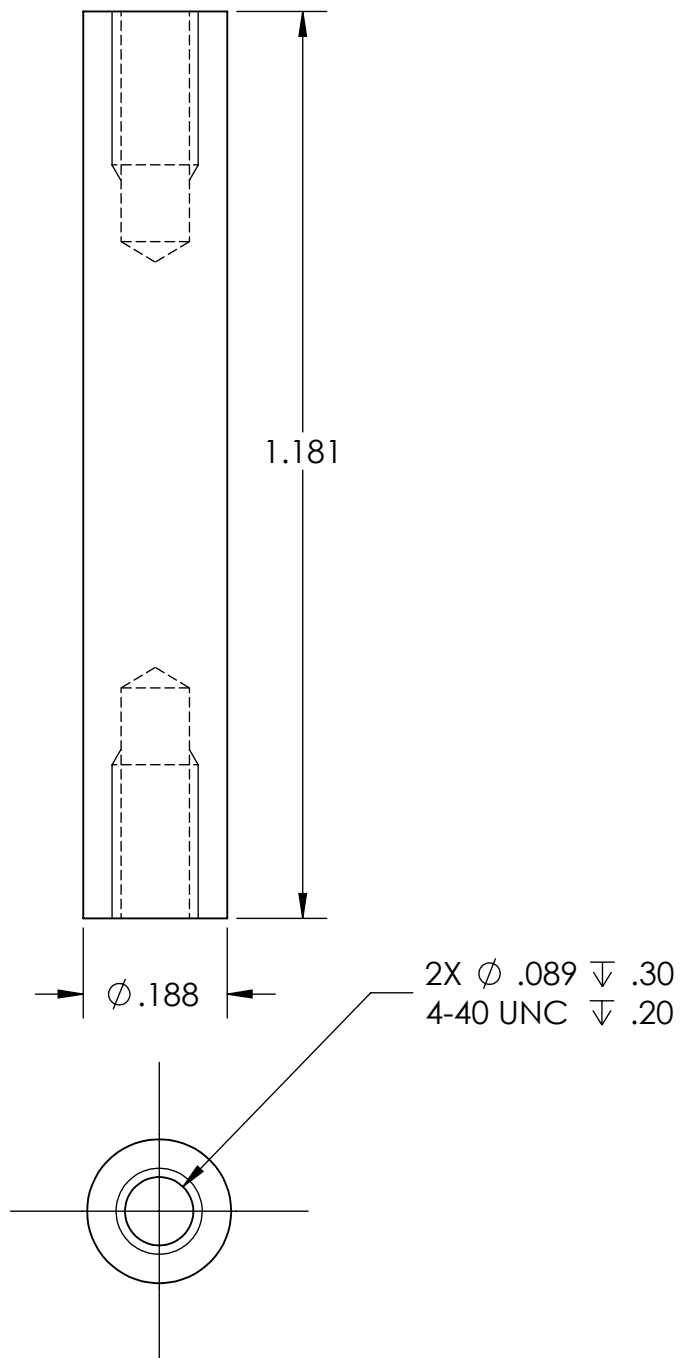
SHEET: 11 OF 19




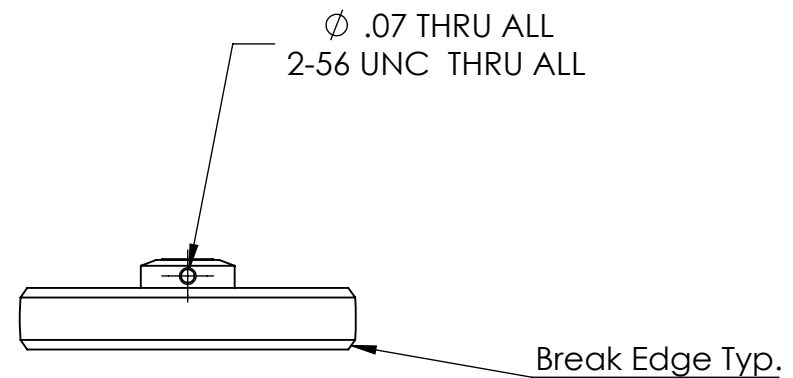
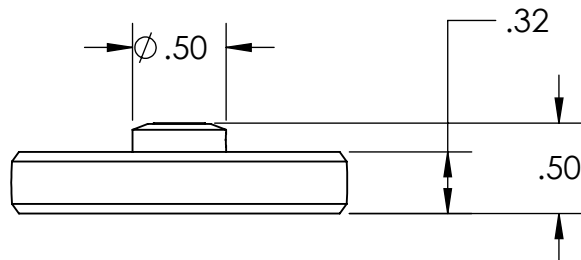
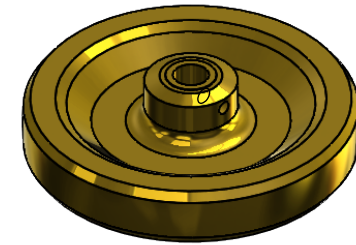
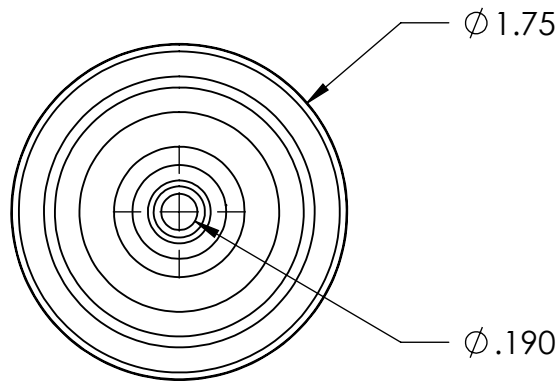
4X  $\varnothing$  .089  $\nabla$  .20  
4-40 UNC  $\nabla$  .13



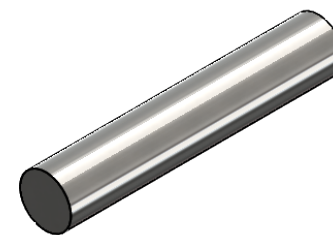
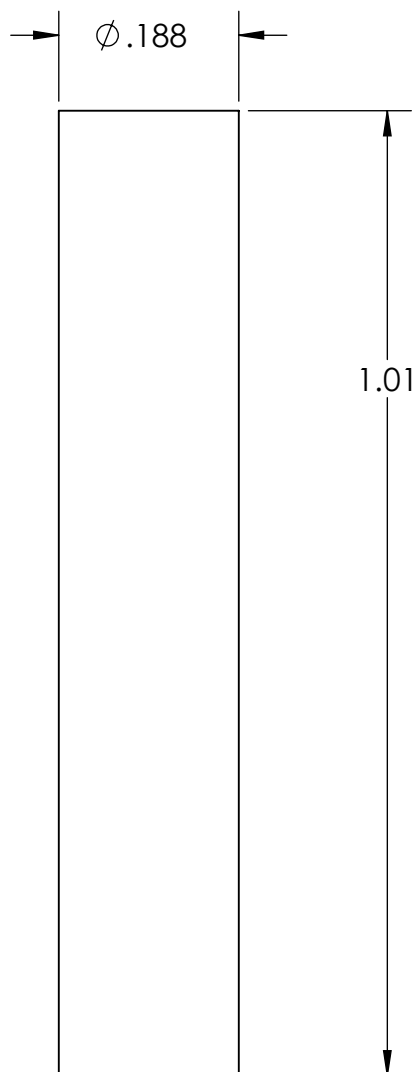
<b>PROPRIETARY AND CONFIDENTIAL</b> THE INFORMATION CONTAINED IN THIS DRAWING IS THE SOLE PROPERTY OF UNIVERSITY OF IDAHO, ME DEPARTMENT. ANY REPRODUCTION IN PART OR AS A WHOLE WITHOUT THE WRITTEN PERMISSION OF UNIVERSITY OF IDAHO, ME DEPARTMENT IS PROHIBITED.		DIMENSIONS ARE IN INCHES THIRD ANGLE PROJECTION 		Boehm ReDesign	
		MATERIAL: Brass			
DEFAULT TOLERANCES:		DESCRIPTION: Connecting Spacer		UNIVERSITY OF IDAHO ME DEPARTMENT	
LINEAR: X. $\pm$ .25 X.X $\pm$ .1 X.XX $\pm$ .01 X.XXX $\pm$ .002	ANGULAR: X. $\pm$ 2 X.X $\pm$ 1 X.XX $\pm$ 0 30'	CHECKED BY: XXXXXXXXXX	DATE: XX/XX/XX		
		DRAWN BY:	DATE: 10/3/2018	PART #:	QTY: 1
FILE NAME: ReDesignBottom Connecting Hexagon, SLD PART1				SHEET: 12 OF 19	

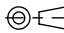


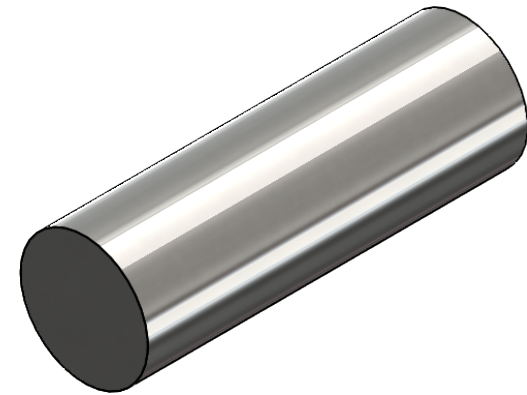
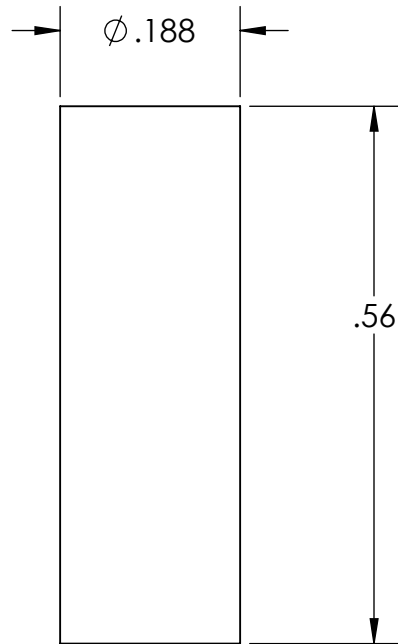
<div>PROPRIETARY AND CONFIDENTIAL</div> <div>THE INFORMATION CONTAINED IN THIS DRAWING IS THE SOLE PROPERTY OF UNIVERSITY OF IDAHO, ME DEPARTMENT. ANY REPRODUCTION IN PART OR AS A WHOLE WITHOUT THE WRITTEN PERMISSION OF UNIVERSITY OF IDAHO, ME DEPARTMENT IS PROHIBITED.</div>		<div>DIMENSIONS ARE IN INCHES</div> <div>THIRD ANGLE PROJECTION</div> <div></div>		<div>Boehm</div> <div>Redesign</div>	
		MATERIAL: Plain Carbon Steel			
DEFAULT TOLERANCES:		DESCRIPTION: Rocker Arm Shaft		UNIVERSITY OF IDAHO	
LINEAR:	ANGULAR:	CHECKED BY: XXXXXXXXXXXX	DATE: XX/XX/XX	ME DEPARTMENT	
X.±.25	X.±2				
X.X±.1	X.X±1				
X.XX±.01	X.XX±0.30'				
X.XXX±.002					
		DRAWN BY:		DATE: 10/4/2018	PART #:
					QTY: 1
		FILE NAME: ReDesignTop Lever Arm Shaft.SLDPRT		SCALE: 2:1	SHEET: 13 OF 19




<b>PROPRIETARY AND CONFIDENTIAL</b> THE INFORMATION CONTAINED IN THIS DRAWING IS THE SOLE PROPERTY OF UNIVERSITY OF IDAHO, ME DEPARTMENT. ANY REPRODUCTION IN PART OR AS A WHOLE WITHOUT THE WRITTEN PERMISSION OF UNIVERSITY OF IDAHO, ME DEPARTMENT IS PROHIBITED.		DIMENSIONS ARE IN INCHES THIRD ANGLE PROJECTION 		Boehm ReDesign			
		MATERIAL: Brass					
DEFAULT TOLERANCES:		DESCRIPTION: Fly Wheel				UNIVERSITY OF IDAHO ME DEPARTMENT	
LINEAR: X. ± .25 X.X ± .1 X.XX ± .01 X.XXX ± .002	ANGULAR: X. ± 2 X.X ± 1 X.XX ± 0 30'	CHECKED BY: XXXXXXXXXXXX	DATE: XX/XX/XX				
		DRAWN BY:	DATE: 10/3/2018	PART #:	QTY: 2		
FILE NAME: ReDesignflywheel.SLDPRT				SCALE: 1:1	SHEET: 14 OF 19		

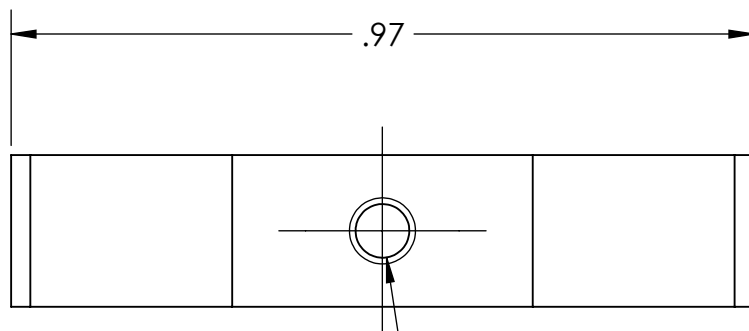
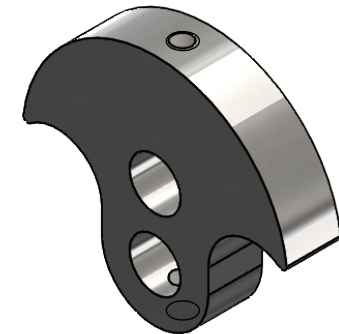
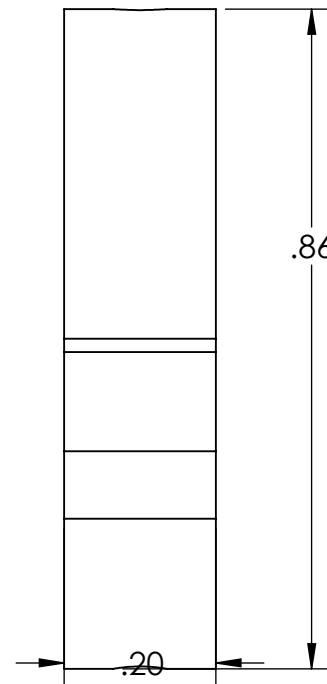
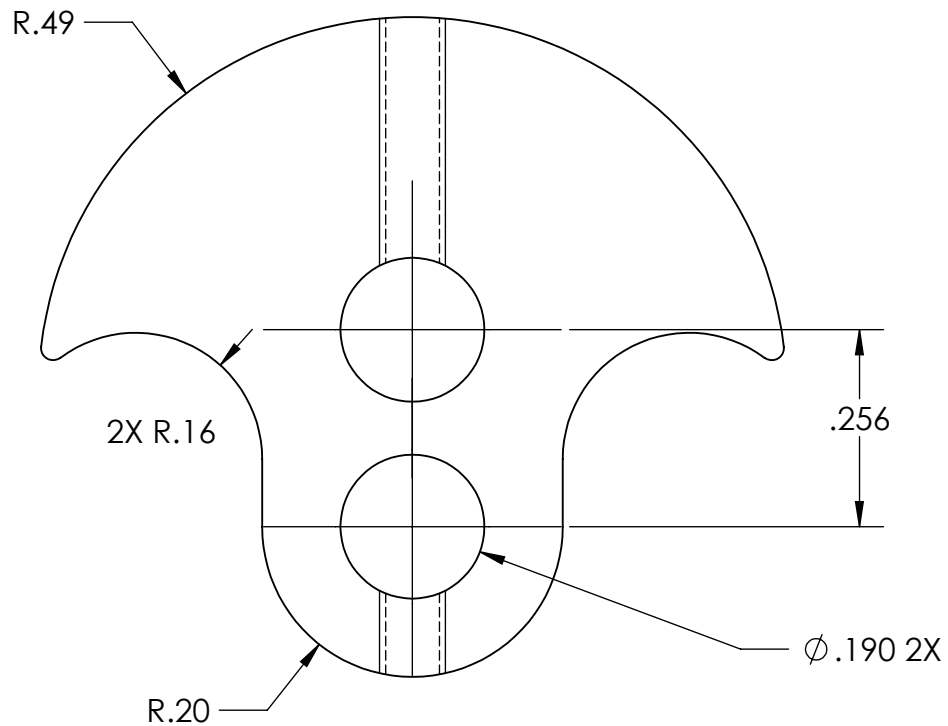


<b>PROPRIETARY AND CONFIDENTIAL</b> THE INFORMATION CONTAINED IN THIS DRAWING IS THE SOLE PROPERTY OF UNIVERSITY OF IDAHO, ME DEPARTMENT. ANY REPRODUCTION IN PART OR AS A WHOLE WITHOUT THE WRITTEN PERMISSION OF UNIVERSITY OF IDAHO, ME DEPARTMENT IS PROHIBITED.		DIMENSIONS ARE IN INCHES THIRD ANGLE PROJECTION 		<b>Boehm ReDesign</b>	
		MATERIAL: Plain Carbon Steel			
DEFAULT TOLERANCES:		DESCRIPTION: Connects Crank Weight to Fly Wheel		<b>UNIVERSITY OF IDAHO ME DEPARTMENT</b>	
LINEAR: X. ± .25 X.X ± .1 X.XX ± .01 X.XXX ± .002	ANGULAR: X. ± 2 X.X ± 1 X.XX ± 0 30'	CHECKED BY: XXXXXXXXXX	DATE: XX/XX/XX		
		DRAWN BY:	DATE: 10/3/2018	PART #:	QTY: 2
		FILE NAME: Smaller axial larger crank.SLDPRT		SCALE: 2:1	SHEET: 15 OF 19



<b>PROPRIETARY AND CONFIDENTIAL</b> THE INFORMATION CONTAINED IN THIS DRAWING IS THE SOLE PROPERTY OF UNIVERSITY OF IDAHO, ME DEPARTMENT. ANY REPRODUCTION IN PART OR AS A WHOLE WITHOUT THE WRITTEN PERMISSION OF UNIVERSITY OF IDAHO, ME DEPARTMENT IS PROHIBITED.		DIMENSIONS ARE IN INCHES THIRD ANGLE PROJECTION 		Boehm ReDesign			
		MATERIAL: Plain Carbon Steel					
DEFAULT TOLERANCES:		DESCRIPTION: Lower Short Crank				UNIVERSITY OF IDAHO ME DEPARTMENT	
LINEAR: X. ± .25 X.X ± .1 X.XX ± .01 X.XXX ± .002	ANGULAR: X. ± 2 X.X ± 1 X.XX ± 0 30'	CHECKED BY: XXXXXXXXXX	DATE: XX/XX/XX				
		DRAWN BY:	DATE: 10/3/2018	PART #:	QTY: 1		
		FILE NAME: Modified lower short crank.SLDPRT		SCALE: 5:1	SHEET: 16 OF 19		





2X  $\phi$  .07 THRU  
2-56 UNC THRU

**PROPRIETARY AND CONFIDENTIAL**

THE INFORMATION CONTAINED IN THIS DRAWING IS THE SOLE PROPERTY OF UNIVERSITY OF IDAHO, ME DEPARTMENT. ANY REPRODUCTION IN PART OR AS A WHOLE WITHOUT THE WRITTEN PERMISSION OF UNIVERSITY OF IDAHO, ME DEPARTMENT IS PROHIBITED.

DIMENSIONS ARE IN INCHES  
THIRD ANGLE PROJECTION

MATERIAL: Plain Carbon Steel

Boehm  
Redesign

**UNIVERSITY OF IDAHO  
ME DEPARTMENT**

**DEFAULT TOLERANCES:**

LINEAR:  
X.  $\pm$  .25  
X.X  $\pm$  .1  
X.XX  $\pm$  .01  
X.XXX  $\pm$  .002

ANGULAR:  
X.  $\pm$  2  
X.X  $\pm$  1  
X.XX  $\pm$  0 30'

DESCRIPTION: Crank Weight

CHECKED BY: XXXXXXXXXX

DATE: XX/XX/XX

DRAWN BY:

DATE: 10/4/2018

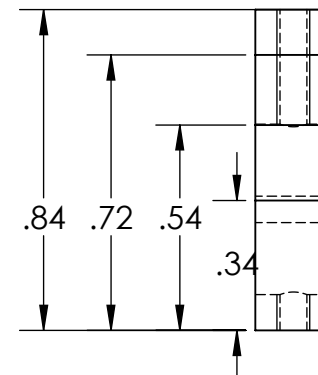
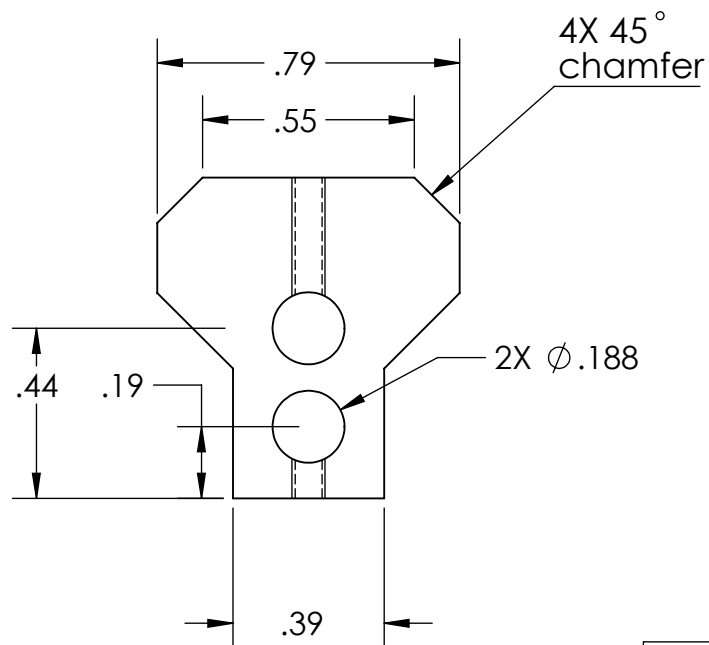
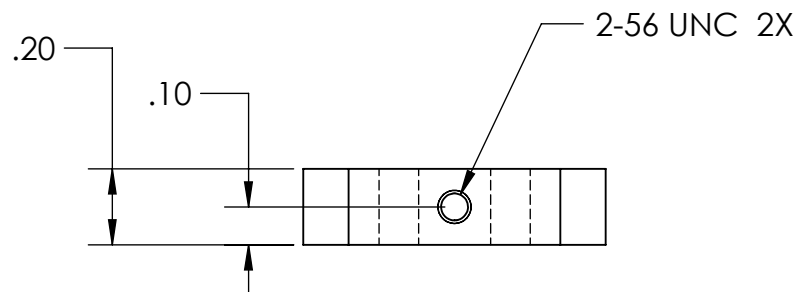
FILE NAME: ReDesignCrank Weights.SLDPR


PART #:

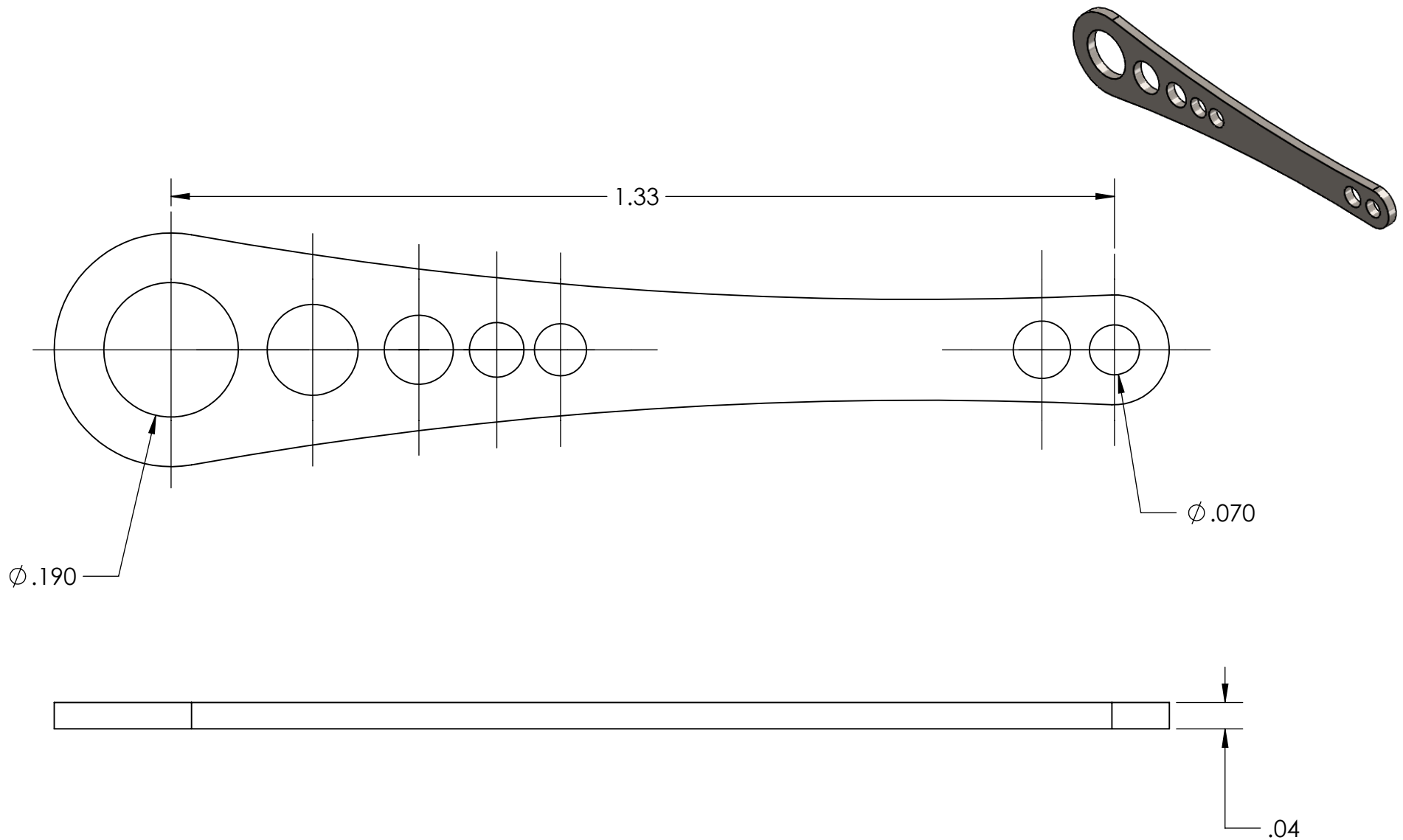
QTY: 2

SCALE: 2:1

SHEET: 17 OF 19



<div>PROPRIETARY AND CONFIDENTIAL</div> <div>THE INFORMATION CONTAINED IN THIS DRAWING IS THE SOLE PROPERTY OF UNIVERSITY OF IDAHO, ME DEPARTMENT. ANY REPRODUCTION IN PART OR AS A WHOLE WITHOUT THE WRITTEN PERMISSION OF UNIVERSITY OF IDAHO, ME DEPARTMENT IS PROHIBITED.</div>		<div>DIMENSIONS ARE IN INCHES</div> <div>THIRD ANGLE PROJECTION </div> <div>MATERIAL: Plain Carbon Steel</div>		<div>Boehm Redesign</div> <div>UNIVERSITY OF IDAHO ME DEPARTMENT</div>	
<div>DEFAULT TOLERANCES:</div> <div>LINEAR: X.±.25 X.X±.1 X.XX±.01 X.XXX±.002</div> <div>ANGULAR: X.± 2 X.X± 1 X.XX± 0 30'</div>		<div>DESCRIPTION: Crank Weight</div> <div>CHECKED BY: XXXXXXXXXX</div> <div>DATE: XX/XX/XX</div> <div>DRAWN BY:</div> <div>DATE: 10/3/2018</div> <div>FILE NAME: crank weight 2.SLDPRT</div>		<div>PART #:</div> <div>QTY: 2</div> <div>SCALE: 2:1</div> <div>SHEET: 18 OF 19</div>	



<b>PROPRIETARY AND CONFIDENTIAL</b> THE INFORMATION CONTAINED IN THIS DRAWING IS THE SOLE PROPERTY OF UNIVERSITY OF IDAHO, ME DEPARTMENT. ANY REPRODUCTION IN PART OR AS A WHOLE WITHOUT THE WRITTEN PERMISSION OF UNIVERSITY OF IDAHO, ME DEPARTMENT IS PROHIBITED.		DIMENSIONS ARE IN INCHES THIRD ANGLE PROJECTION		Boehm Redesign	
		MATERIAL:		<b>UNIVERSITY OF IDAHO          ME DEPARTMENT</b>	
DEFAULT TOLERANCES: LINEAR: X. $\pm$ .25 X.X $\pm$ .1 X.XX $\pm$ .01 X.XXX $\pm$ .002		DESCRIPTION: Final Assembly Boehm Redesign Stirling CHECKED BY: XXXXXXXXXXXX DATE: XX/XX/XX DRAWN BY: DATE: 10/4/2018 FILE NAME: Redesign Sterling.SLDprt		PART #:	QTY: 1
ANGULAR: X. $\pm$ 2 X.X $\pm$ 1 X.XX $\pm$ 0 30'		SCALE: 2:1		SHEET: 19 OF 19	